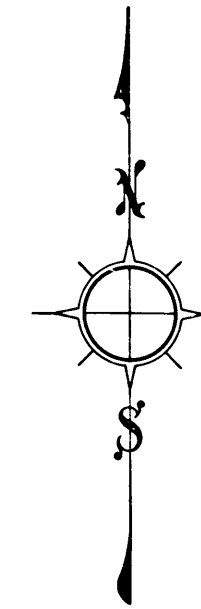


# PLAT OF THE ASSESSMENT DISTRICT

SCALE 1" = 100'



Showing Lands to be taken and the Lands to be assessed for the widening of ORANGE DRIVE from the produced center line of MILTON AVENUE to the east line of PICKERING AVENUE in the City of WHITTIER, CALIF., in accordance with Resolution of Intention of the Board of Trustees of said City, No. 818, adopted April 9<sup>th</sup>, A. D. 1923, each district, block, lot or portion of lot and its dimensions, within the boundaries of the assessment district and the relative location of each of such districts, blocks, lots, or portions of lots to the improvement. Yellow tinting shows the Land to be taken for the widening of ORANGE DRIVE. Other tintings show the boundaries of those portions of the recorded subdivisions shown hereon. Exterior boundaries of assessment district are shown colored green. Figures in black next to the property lines show, each, the length of said line in feet. Other figures in black show the numbers of the lots. Each separate district, block, lot, or portion of lot, within the boundaries of the assessment district, is numbered in red to correspond with the red assessment numbers in the report of the Commissioners. Brown lines and figures show property lines and dimensions in those cases where the actual holdings differ from the recorded subdivisions. Hereon the mark means feet. M. B. means Miscellaneous Records and M. B. means Map Book. All records referred to hereon are records of Los Angeles County, Calif.

Filed Jan. 28, A.D. 1924  
 Clarence O. Trueblood  
 City Clerk

Approved by the Board of Trustees Jan. 28, A.D. 1924  
 Clarence O. Trueblood  
 City Clerk

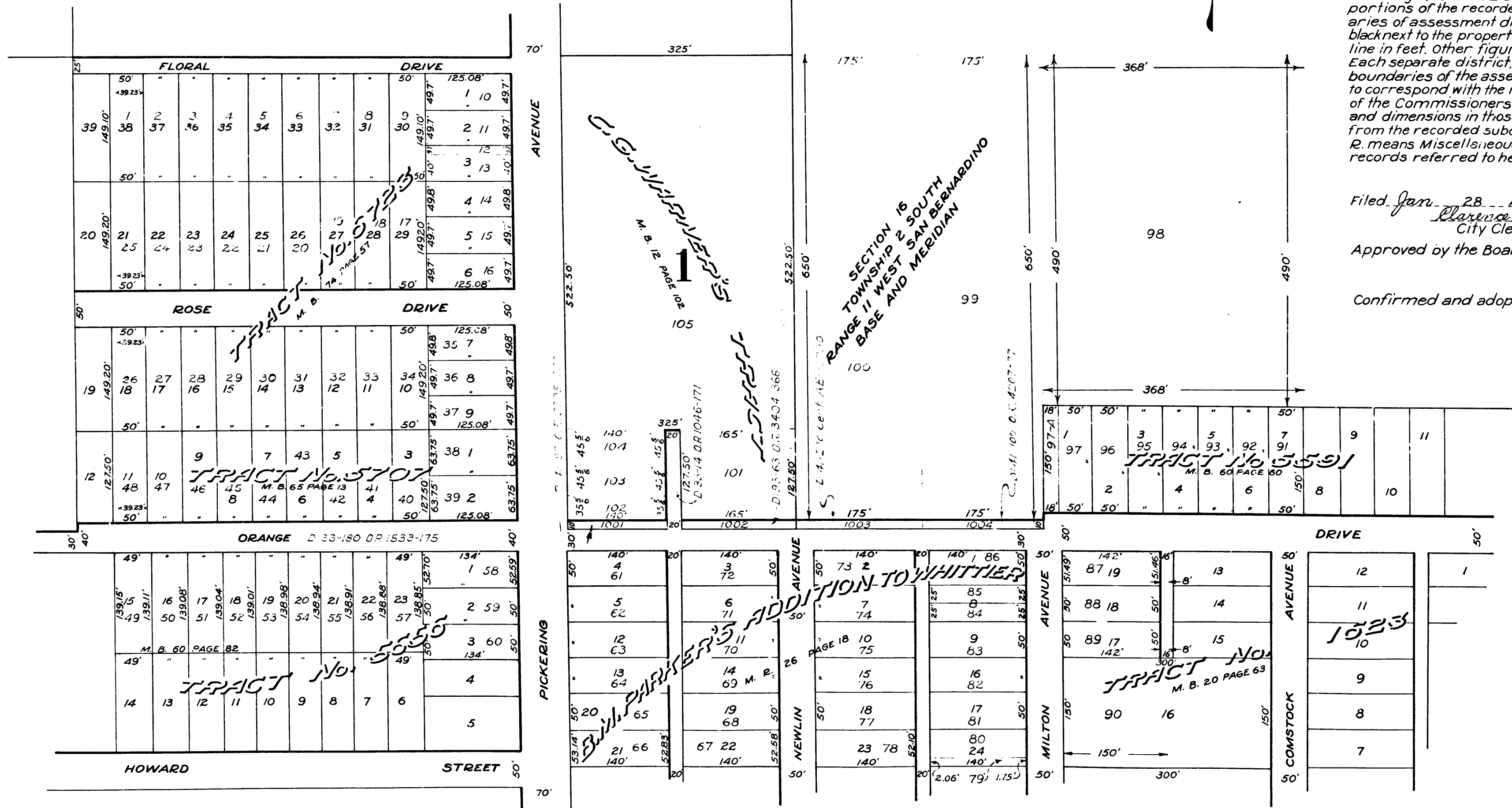
Confirmed and adopted by the Board of Trustees Mar. 10, A.D. 1924  
 Clarence O. Trueblood  
 City Clerk

State of California }  
 County of Los Angeles } S.S.

Clarence O. Trueblood, City Clerk

of the City of Whittier, do hereby certify the foregoing to be a full, true and correct copy of the Plat of the Assessment District for the widening of ORANGE DRIVE from the produced center line of MILTON AVENUE to the east line of PICKERING AVENUE as confirmed and adopted by the Board of Trustees of the City of Whittier, on the 10<sup>th</sup> day of Mar. A.D. 1924. In witness whereof I have hereunto set my hand and affixed the corporate seal of said City at my office on this the 11<sup>th</sup> day of Mar. A.D. 1924.

Clarence O. Trueblood  
 City Clerk of the City of Whittier



INDEX 57

Filed March 27, 1924

R.F. 472