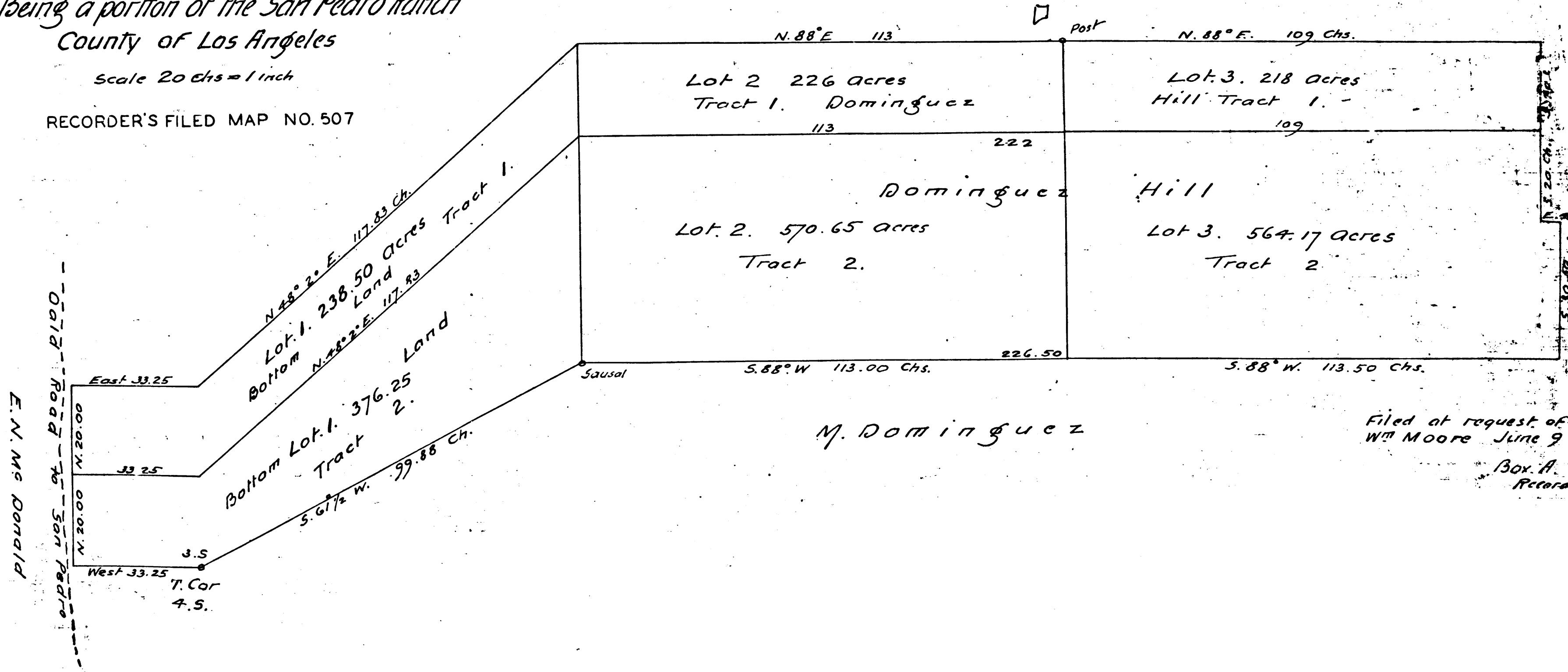


PLAT OF
 Hellman, Downey & Hayward
 Tract
 Being a portion of the San Pedro Ranch
 County of Los Angeles

Scale 20 Chs = 1 inch

RECORDER'S FILED MAP NO. 507



M. Dominguez

Filed at request of
 Wm Moore June 9 1912
 Box A
 Recorder's Office

R.F. 507