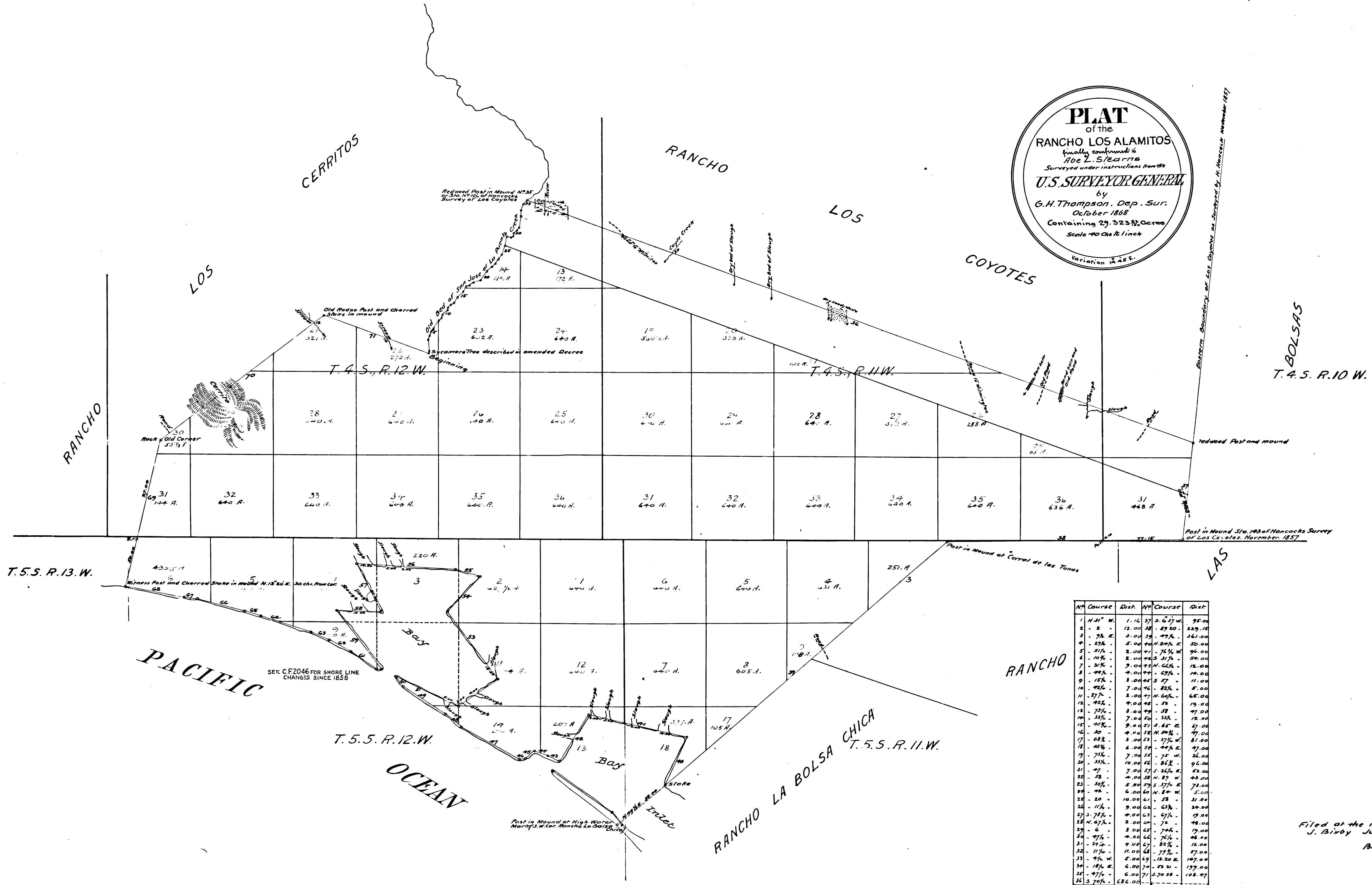


PLAT
of the
RANCHO LOS ALAMITOS
finally confirmed to
Abe L. Stearns
Surveyed under instructions from the
U.S. SURVEYOR GENERAL
by
G. H. Thompson, Dep. Sur.
October 1868
Containing 29,323 1/2 Acres
Scale 40 Chs to 1 inch
Variation 14 1/2 E.



No. Course	Dist.	No. Course	Dist.
1 N 31° W	1.16 37	5 S 67° W	95.00
2 - 2	12.00 28	6 S 20°	229.15
3 - 7 1/2 E	3.00 39	7 1/2 E	361.00
4 - 2 1/2 E	5.00 40	8 2 1/2 E	50.00
5 - 5 1/2 E	2.00 41	9 5 1/2 E	90.00
6 - 10 1/2 E	2.00 42	10 10 1/2 E	84.00
7 - 2 1/2 E	3.00 43	11 2 1/2 E	12.00
8 - 4 1/2 E	4.00 44	12 4 1/2 E	14.00
9 - 15 1/2 E	1.00 45	13 15 1/2 E	11.00
10 - 4 1/2 E	7.00 46	14 4 1/2 E	8.00
11 - 3 1/2 E	2.00 47	15 3 1/2 E	65.00
12 - 4 1/2 E	4.00 48	16 4 1/2 E	19.00
13 - 7 1/2 E	8.00 49	17 7 1/2 E	47.00
14 - 3 1/2 E	7.00 50	18 3 1/2 E	12.00
15 - 10 1/2 E	9.00 51	19 10 1/2 E	67.00
16 - 10	4.00 52	20 10 E	47.00
17 - 6 1/2 E	3.00 53	21 6 1/2 E	81.00
18 - 4 1/2 E	6.00 54	22 4 1/2 E	47.00
19 - 7 1/2 E	7.00 55	23 7 1/2 E	26.00
20 - 3 1/2 E	10.00 56	24 3 1/2 E	96.00
21 - 4 1/2 E	7.00 57	25 4 1/2 E	82.00
22 - 3 1/2 E	4.00 58	26 3 1/2 E	43.00
23 - 3 1/2 E	5.00 59	27 3 1/2 E	78.00
24 - 4 1/2 E	6.00 60	28 4 1/2 E	51.00
25 - 2 1/2 E	10.00 61	29 2 1/2 E	31.00
26 - 1 1/2 E	9.00 62	30 1 1/2 E	20.00
27 - 3 1/2 E	4.00 63	31 3 1/2 E	19.00
28 - 4 1/2 E	2.00 64	32 4 1/2 E	48.00
29 - 6	3.00 65	33 6 E	19.00
30 - 4 1/2 E	4.00 66	34 4 1/2 E	48.00
31 - 2 1/2 E	7.00 67	35 2 1/2 E	12.00
32 - 1 1/2 E	11.00 68	36 1 1/2 E	87.00
33 - 4 1/2 E	5.00 69	37 4 1/2 E	107.00
34 - 1 1/2 E	6.00 70	38 1 1/2 E	177.00
35 - 4 1/2 E	6.00 71	39 4 1/2 E	108.00
36 - 3 1/2 E	6.00 72	40 3 1/2 E	108.00

R.F. 516

Filed at the request of
J. Bixby July 1st 1880.
Bar B.
Recorders Office