

Map

of that portion of the

RANCHO CIENEGA O PASO DE LA TIJERA

owned by

A. J. Hutchinson & E. J. Baldwin

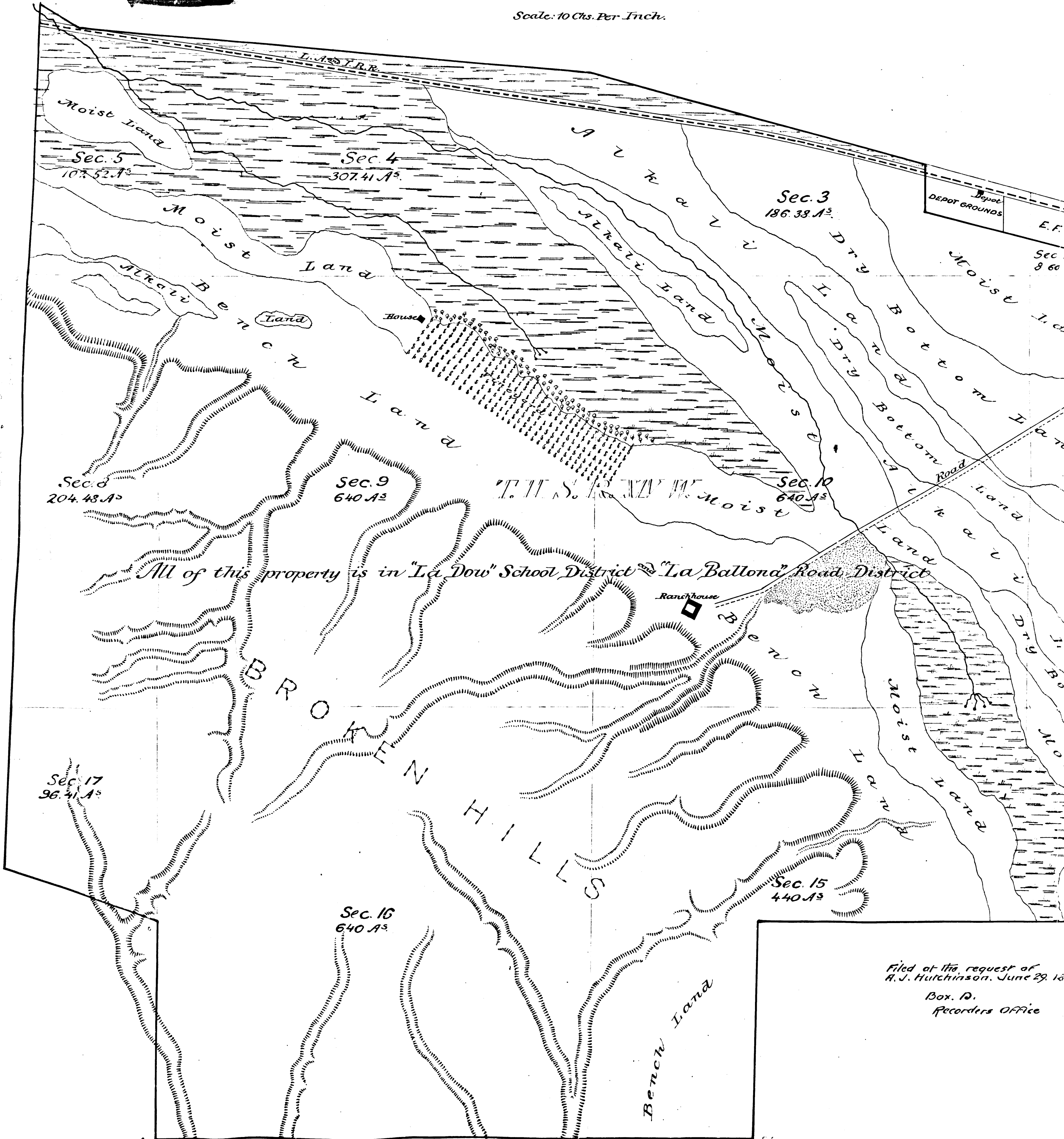
surveyed in June 1880

by

E. T. Wright
Co. Surv.

Scale: 10 Chs. Per Inch.

R.F. 532
A1 OF A2



Filed at the request of
A. J. Hutchinson, June 29, 1880
Box 10,
Recorders Office

Map

of that portion of the

CHO CIENEGA O' PASO DE LA TIJERA

owned by

A. J. Hutchinson & E. J. Baldwin

surveyed in June 1880

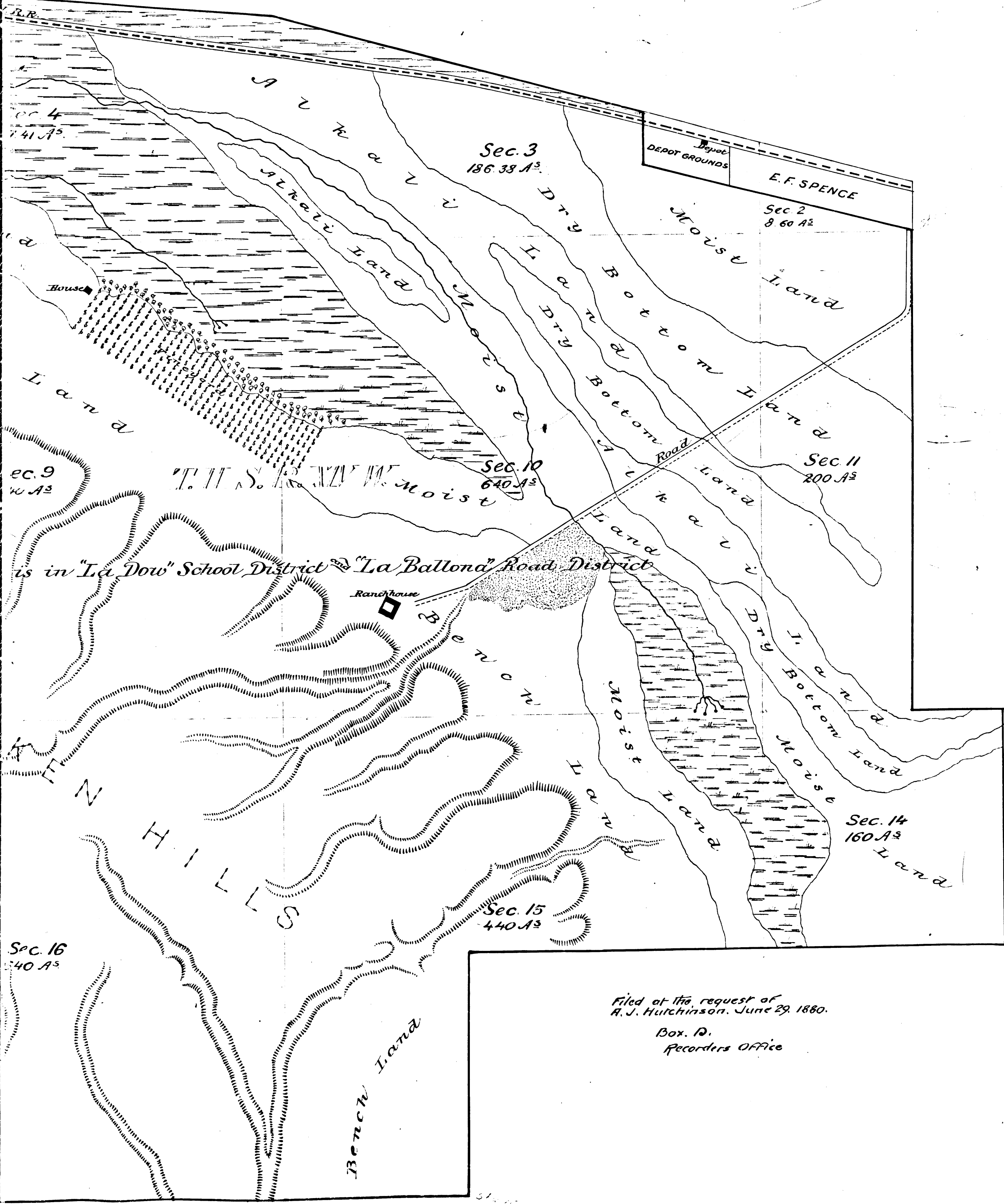
by

E. T. Wright

Co. Surv.

Scale: 10 Chs. Per Inch.

R.F. 532
A2 OF A2



Filed at the request of
A. J. Hutchinson, June 29, 1880.
Box. D.
Recorders Office