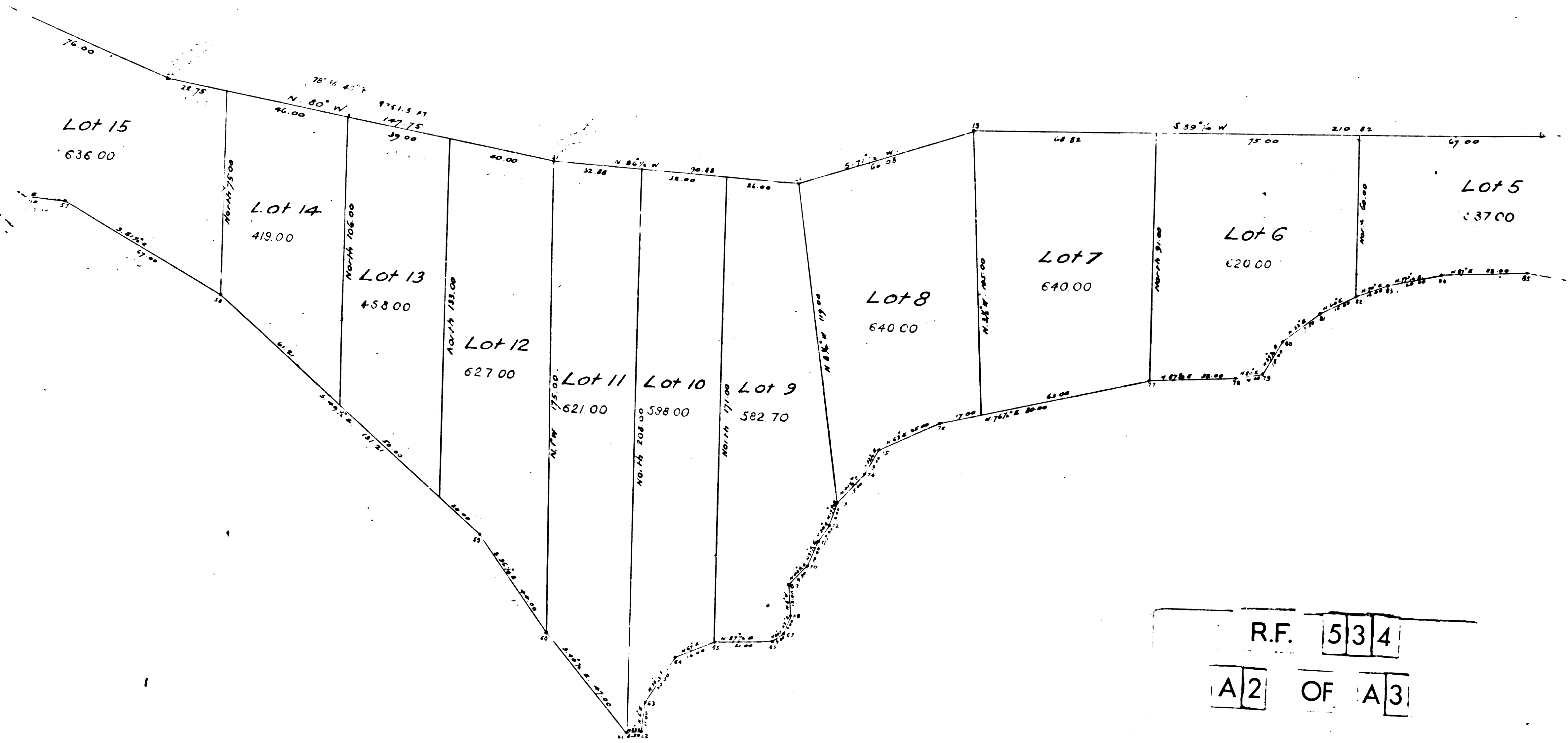


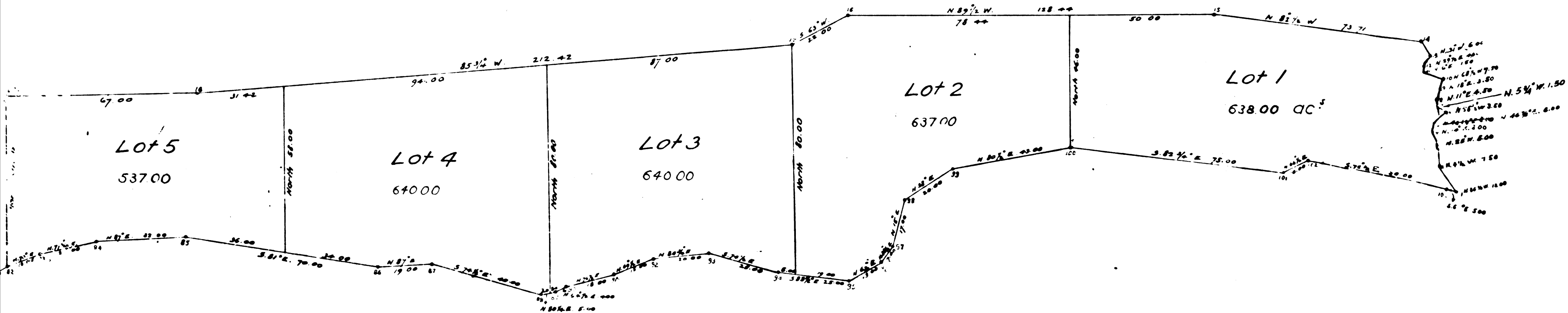
Map  
of the land of  
**Matthew Keller**  
13315.70 AC±  
IN THE  
**Rancho Topanga Malibu Sequit**  
County of Los Angeles, California.  
Drawn by A.F. Solano, Sur.  
May 24, 1880  
Scale of 1 inch to 20 chs.

R.F. 534  
A1 OF A3

For Malibu Road - Final order of condemnation  
see D: 21-26 U: 6048-1



R.F. 534  
 A2 OF A3



RECORDERS FILED MAP NO. 534

Filed at the request of  
A. W. Ryan June 11<sup>th</sup>, 1880.

Box 10  
Recorders Office

R.F. 534

A3 OF A3