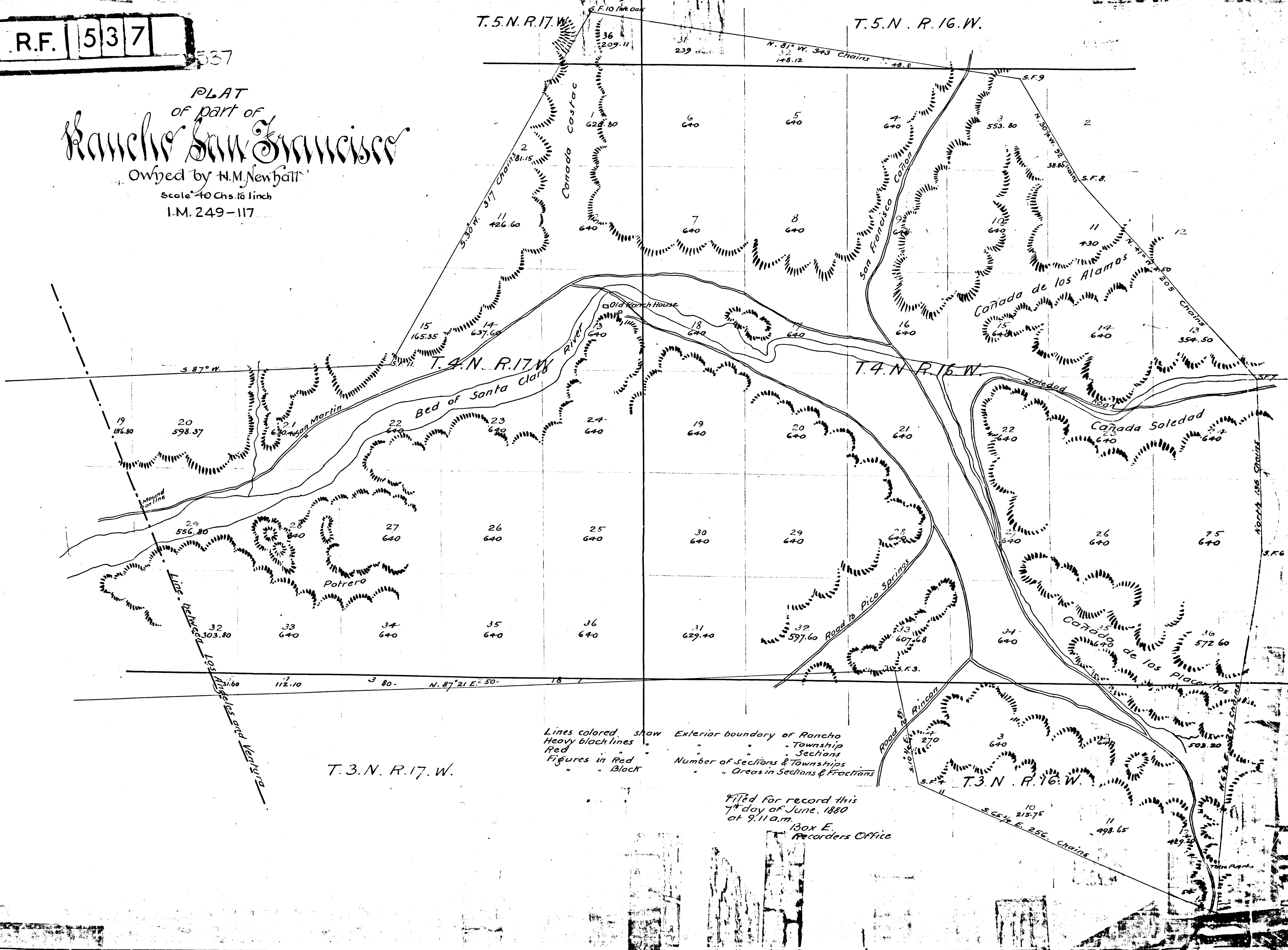


R.F. 537

537

PLAT
of part of
Rancho San Francisco
Owned by N.M. Newhall
Scale 40 Chs. to 1 inch
I.M. 249-117



Lines colored show Exterior boundary of Rancho
Heavy black lines " Township
Red " Sections
Figures in Red " Number of Sections & Townships
" " Black " Areas in Sections & Fractions

Filed for record this
7th day of June, 1880
at 9:11 a.m.
Box E,
Recorders Office