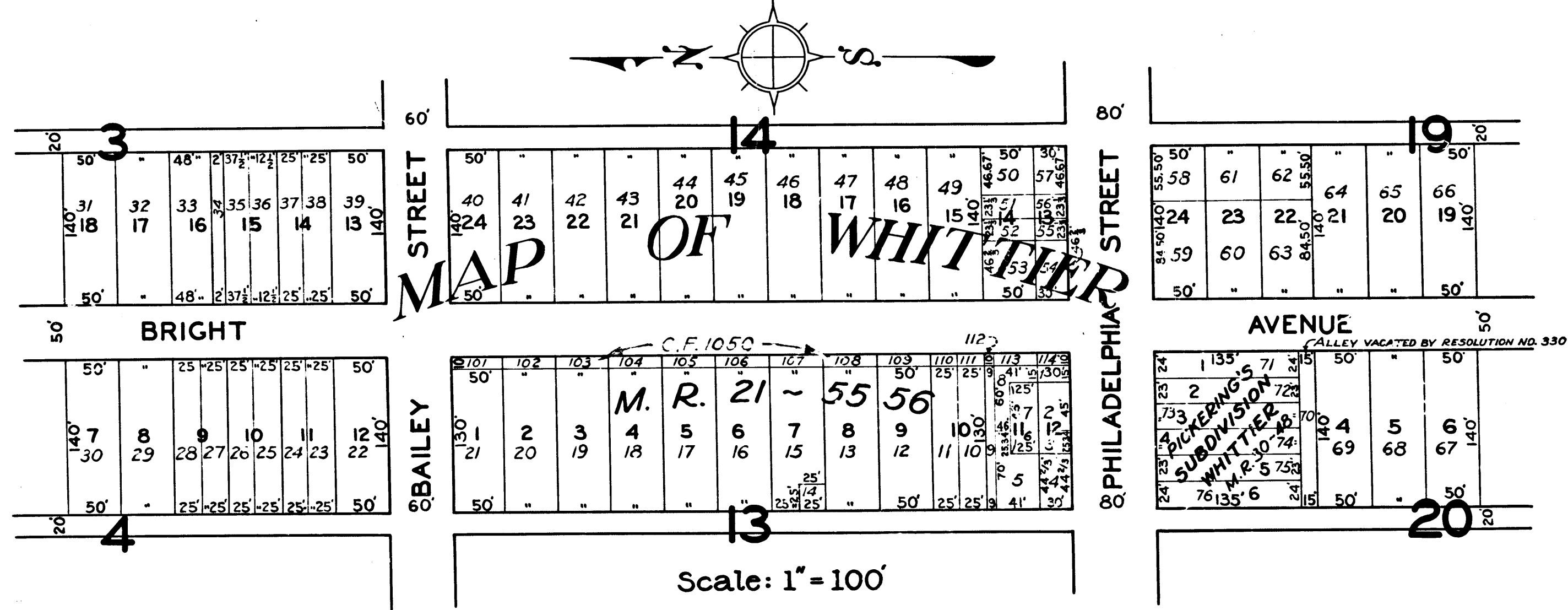


PLAT OF THE ASSESSMENT DISTRICT

Showing Lands to be taken and the Lands to be assessed for the widening of BRIGHT AVENUE from the south Line of Bailey Street to the North Line of Philadelphia Street in the City of Whittier, California in accordance with Resolution of Intention of the Board of Trustees of said City, No. 531, adopted June 4, A.D. 1923, each district, block, lot or portion of lot, and its dimensions, within the boundaries of the assessment district and the relative location of each of such districts, blocks, lots or portions of lots to the improvement. Yellow tinting shows the Lands to be taken for the widening of BRIGHT AVENUE. Other tintings show the boundaries of those portions of the recorded subdivisions shown hereon. Exterior boundaries of assessment district are shown colored green. Figures in blue next to the property lines show each, the length of said line in feet. Other figures in blue show numbers of the Lots. Each separate district, block, lot, or portion of lot, within the boundaries of the assessment district, is numbered in red to correspond with the red assessment numbers in the report of the Commissioners. Brown lines and figures show property lines and dimensions in those cases where the actual holdings differ from the recorded subdivisions. Hereon the mark ' means feet, M. R. means Miscellaneous Records and M. B. means Map Book. All records referred to hereon are records of Los Angeles County, California.



Filed JUNE - 10 - A.D. 1924 Approved by the Board of Trustees JULY - 7 - A. D. 1924. Confirmed and adopted by the Board of Trustees AUGUST - 18 - A. D. 1924.
Paul Gilmore City Clerk Paul Gilmore City Clerk Paul Gilmore City Clerk

State of California }
 County of Los Angeles } s.s.
 I, PAUL GILMORE City Clerk of the City of Whittier, do hereby certify the foregoing to be a full, true and correct copy of the Plat of the Assessment District for the widening of Bright Avenue from the south line of Bailey Street to the North line of Philadelphia Street as confirmed and adopted by the Board of Trustees of the City of Whittier, on the 18th. day of August, A.D. 1924. In witness whereof I have hereunto set my hand and affixed the corporate seal of said city at my office on this, the 18th. day of August, A. D. 1924.
Paul Gilmore
 City Clerk of the City of Whittier



R.F. 547-R