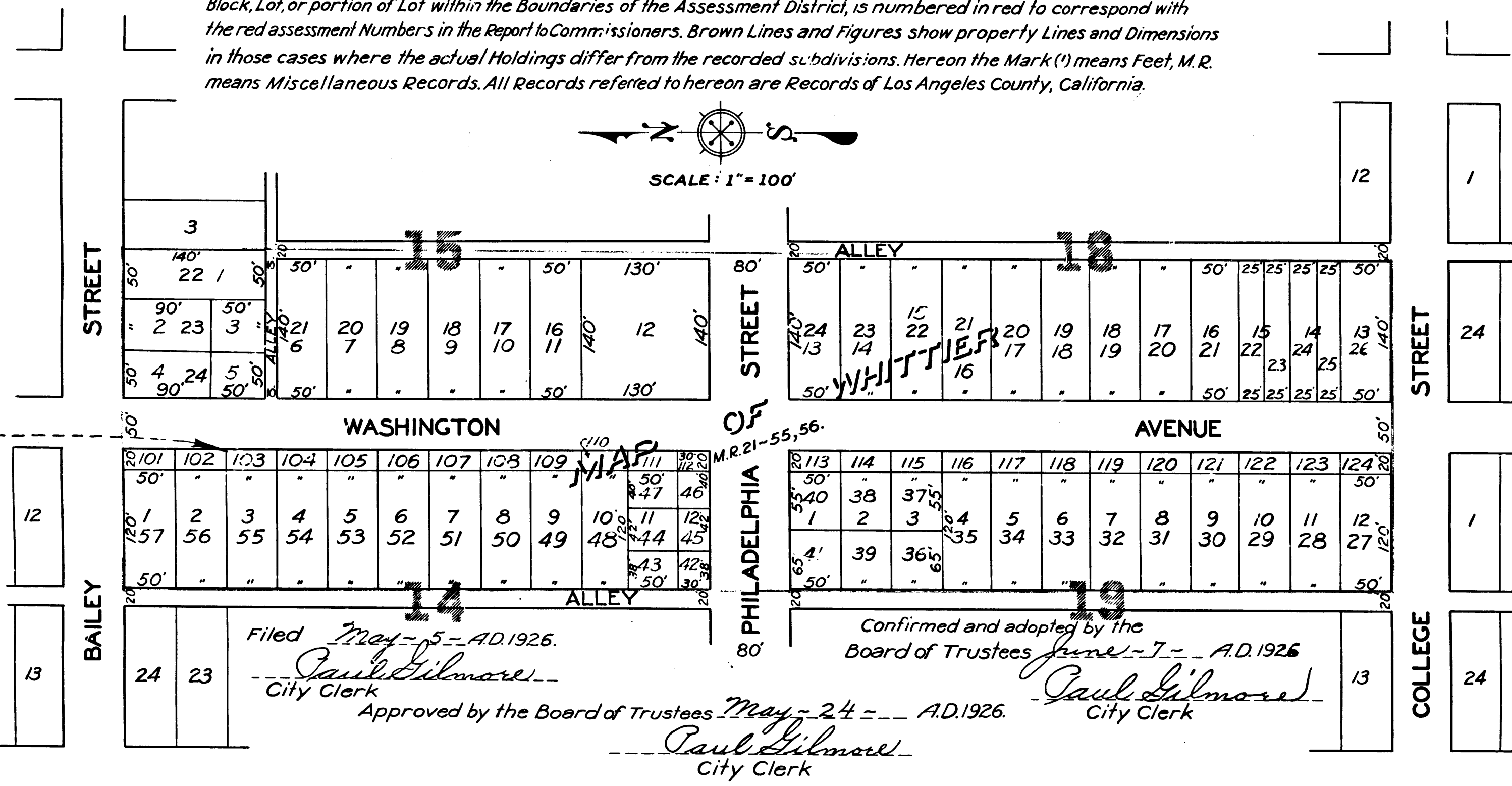


PLAT OF THE ASSESSMENT DISTRICT

R.F. 560-R

Showing Lands to be taken and the Lands to be assessed for the widening of WASHINGTON AVENUE from the South line of Bailey Street to the North line of College Street in the City of Whittier, California, in accordance with Ordinance of intention of the Board of Trustees of said City, No. 608, adopted April 6th A.D. 1925, each District, Block, Lot or portion of Lot, and its dimensions, within the Boundaries of the Assessment District and the relative location of each of such Districts, Blocks, Lots, or portions of Lots to the Improvement. Yellow tinting shows the Lands to be taken for the widening of Washington Avenue. Other Tintings show the Boundaries of those portions of the recorded subdivisions shown hereon. Exterior Boundaries of Assessment District are shown colored green. Figures in blue next to the property lines show, each, the length of said Line in Feet. Other figures in blue show numbers of the Lots. Each separate District, Block, Lot, or portion of Lot within the Boundaries of the Assessment District, is numbered in red to correspond with the red assessment Numbers in the Report to Commissioners. Brown Lines and Figures show property Lines and Dimensions in those cases where the actual Holdings differ from the recorded subdivisions. Hereon the Mark (') means Feet, M.R. means Miscellaneous Records. All Records referred to hereon are Records of Los Angeles County, California.



Parcels shaded yellow condemned for street - D: 59-85, J.B. 628-159

Filed May 5 - A.D. 1926.
Paul Gilmore
 City Clerk

Approved by the Board of Trustees May 24 - A.D. 1926.
Paul Gilmore
 City Clerk

Confirmed and adopted by the Board of Trustees June 7 - A.D. 1926.
Paul Gilmore
 City Clerk

State of California }
 County of Los Angeles } s.s.
 I, *Paul Gilmore* City Clerk of the City of Whittier, do hereby certify the foregoing to be a full, true and correct copy of the plat of the Assessment District for the widening of Washington Avenue from the South line of Bailey Street to the North line of College Street as confirmed and adopted by the Board of Trustees of the City of Whittier, on the 7th day of June A.D. 1926.
 In witness whereof I have hereunto set my hand and affixed the corporate seal of said City at my office on this, the 8th day of June A.D. 1926.
Paul Gilmore
 City Clerk of the City of Whittier

I, M.R. Bowen, City Engineer of the City of Whittier, do hereby certify that the foregoing Plat of the Assessment District for the widening of Washington Avenue from the South line of Bailey Street to the North line of College Street in said City was delivered by me to the Street Superintendent of said City on the 4th day of May 1926.
M.R. Bowen
 City Engineer