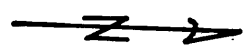


Plat of Part of the
 Rancho La Puente
 in Los Angeles County
 owned by and assessed to
 F. Graziade

Scale 10 Chs. per inch



Filed at the request of
 F. Graziade May 13th 1880
 at 10.5 A.M.

Box. H.
 Recorder's Office

Heirs of John Rowland Jr.

North 136.60 Chs.

Lot 4. 354.79 Acres

S. 3° 17' W 145.10 Chs.

Goodwin and Polaster

Lot 5 373.77 Acres

N. 16 3/4° W. 107.00 Chs.

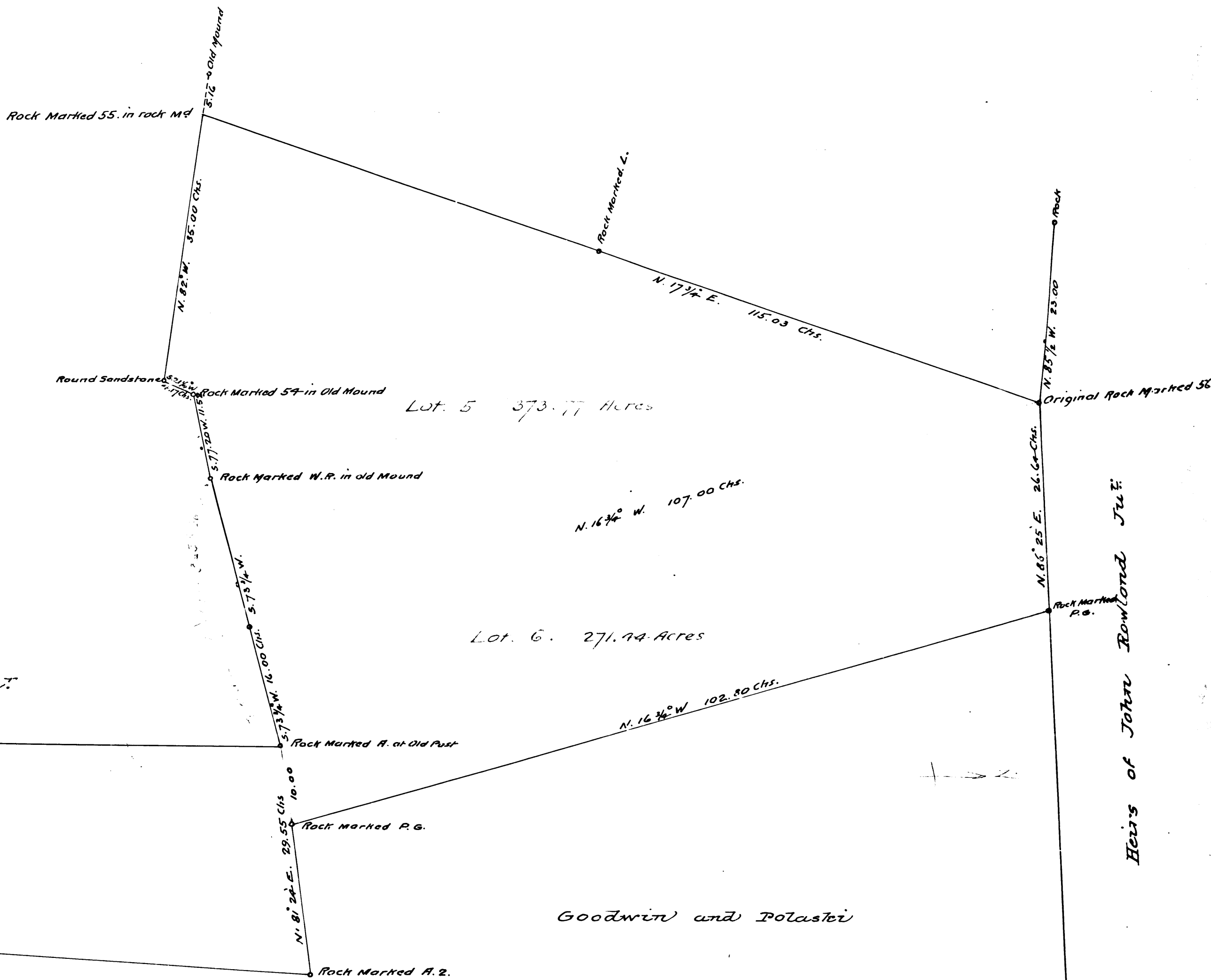
Lot 6. 271.74 Acres

N. 16 3/4° W 102.80 Chs.

Goodwin and Polaster

Rancho La Habra.

N. 79 1/2° W. 21.80 Chs.
 Rock Marked 22.A.
 Rock Marked L.P.B.



Heirs of John Rowland Jr.

R.F. 565