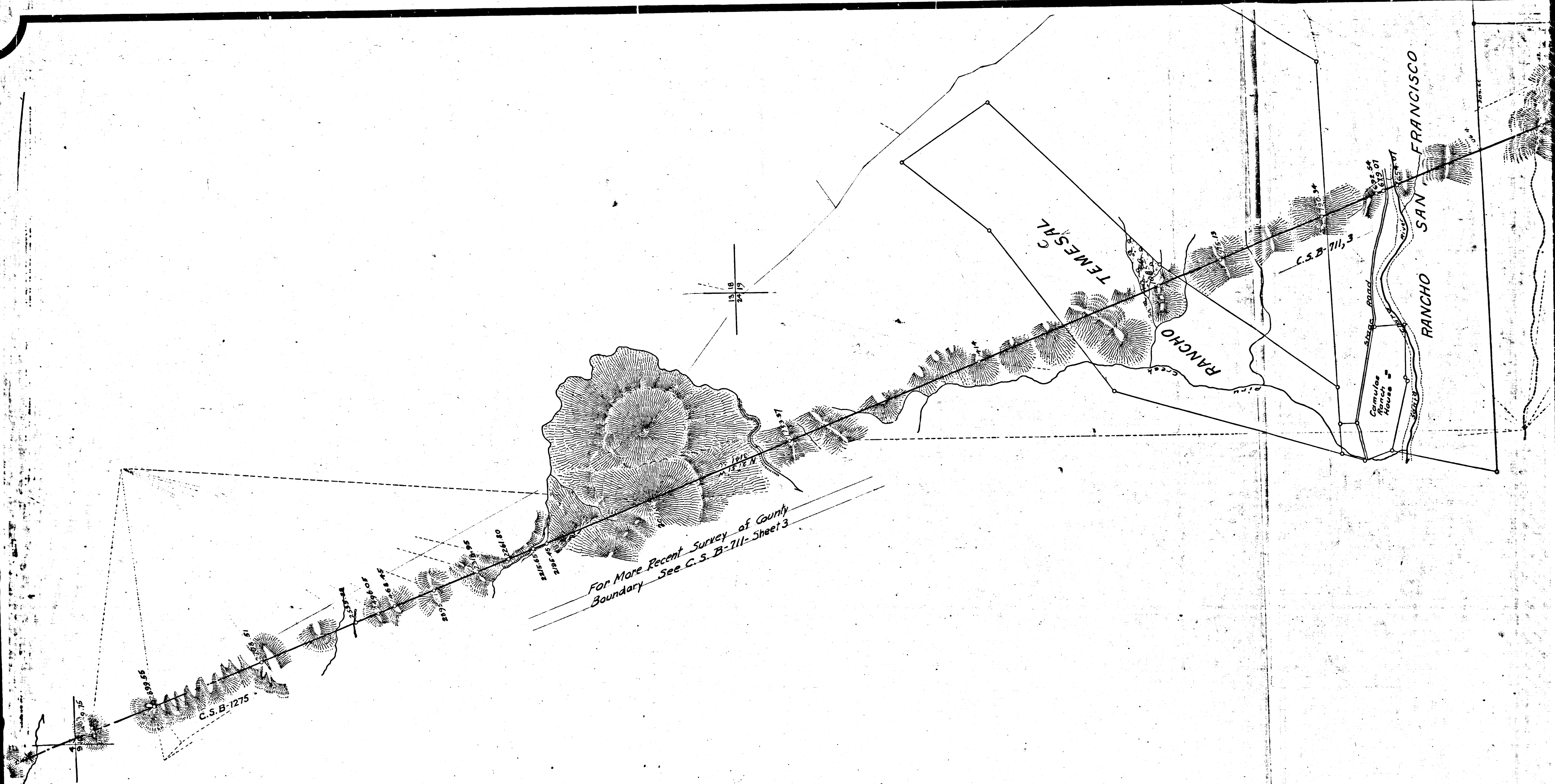
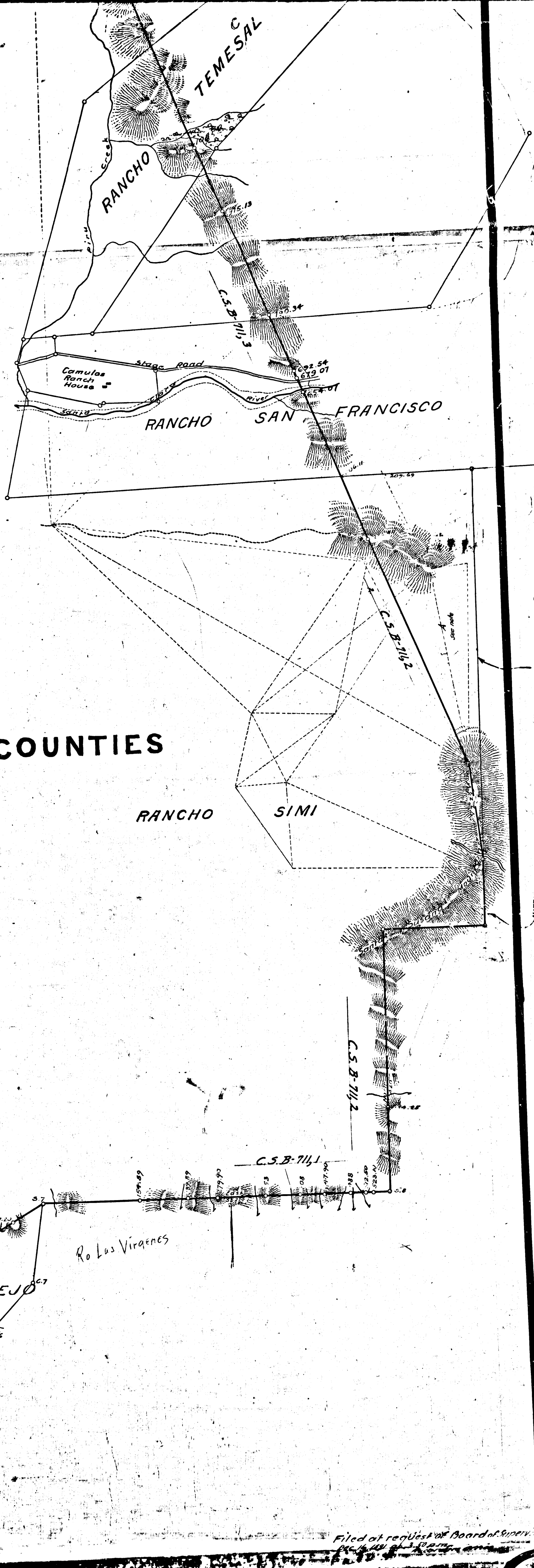


C.S.B-1275



R.F.	583
A1	OF A2



**MAP OF  
DIVIDING LINE  
between  
LOS ANGELES and VENTURA COUNTIES**

Surveyed June & July 1881  
E. J. Wright & J. J. Stow, County Surveyors.

Scale 80 Chains to 1"

See M. R. 43-25  
M. 40-66 to 77

C. S. 8189

For official County Boundary Description see C.S. 9122

*Note:—The line as surveyed and shown on this map has been fixed as boundary line between Los Angeles and Ventura Counties as per opinion of County Counsel. For copy of opinion see D: 63 page 287.*

*For Survey of Los Angeles-Ventura County Boundary by the Los Angeles County Surveyor in 1929 to 1932 See C.S.B-711, Sheets 1 to 3*

R.F. 583  
A2 OF A2

735.55 per M.R. 43-25

NOTE:—This distance is probably in error. This map was filed in connection with M.R. 39-79-71-72-74 Part 4-336-173-66 122.64 probably correct. 60-June 7-26-66

Filed at request of Board of Supervisors