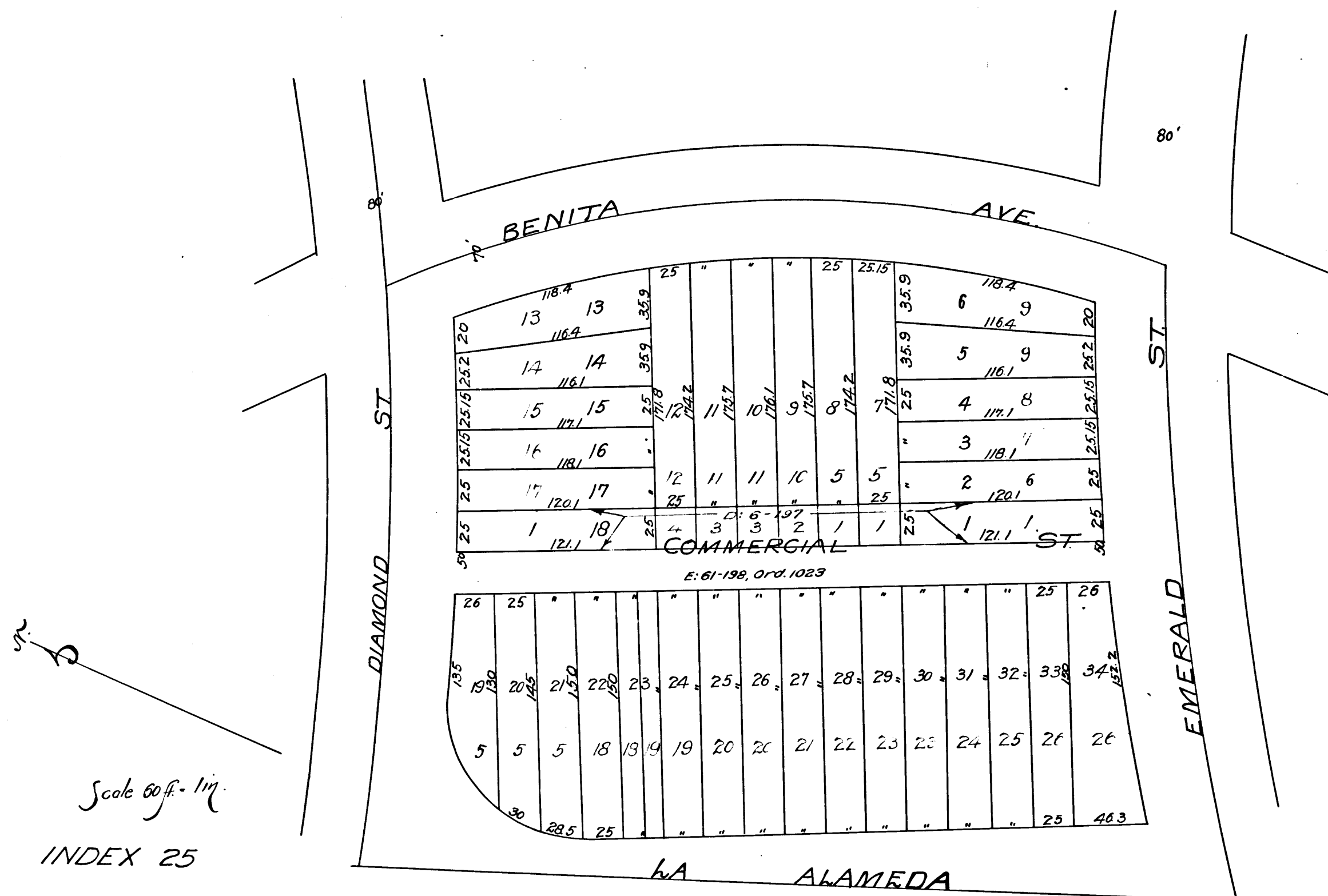


Plot of Assessment District

For opening and widening alley in Block 208, City of Redondo Beach, from Diamond Street southerly to Emerald Street, said alley so opened to be known as Commercial Street.



We hereby certify that the foregoing is a true copy of the plat of the Assessment District and land taken for opening and widening alley in Block 208 City of Redondo Beach, from Diamond Street southerly to Emerald Street, known also as Commercial Street, and that said plat has been duly approved by the Board of Trustees of said City by resolution duly passed and adopted on the 9th day of November 1903

W. Spensworth  
President of Board of Trustees of the City of Redondo Beach.

L. D. Barkley  
City Clerk

Filed Jan. 15, 1904.

R.F. 594

Comp  
H.C.H.