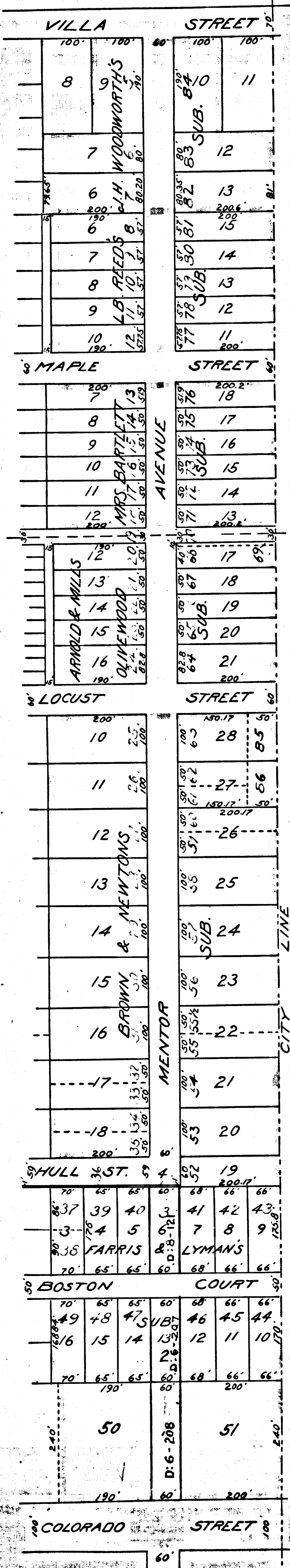


IN 12
A 50 1/2



599

R.F. 599

DIAGRAM

Exhibiting the assessment district and the land to be taken for the opening and extending of Mentor Avenue in the City of Pasadena, from the south line of Hull Street to the north line of Colorado Street, also showing the land assessed and the relative location of each district, block, lot, portion of lot or parcel of land and its dimensions. Each block, lot or portion of lot taken or assessed is designated and described by the number marked thereon in red ink.

Hereon the mark ' means feet. Figures in black ink next to property lines show each the length of said lines in feet, other figures in black show the numbers of the lots. Solid black lines show original lot lines, broken black lines show subdivisions of original lots. Blue and yellow tinting shows boundaries of subdivisions named, brown tinting shows boundaries of the assessment district and green lines show the boundaries of the land to be taken for the opening and extending of said Mentor Avenue. The diagram is drawn to a scale of 200 feet to an inch.

T.D. Allin
City Engineer

Pasadena, California
1904

Filed Aug. 10th 1904

Index #8