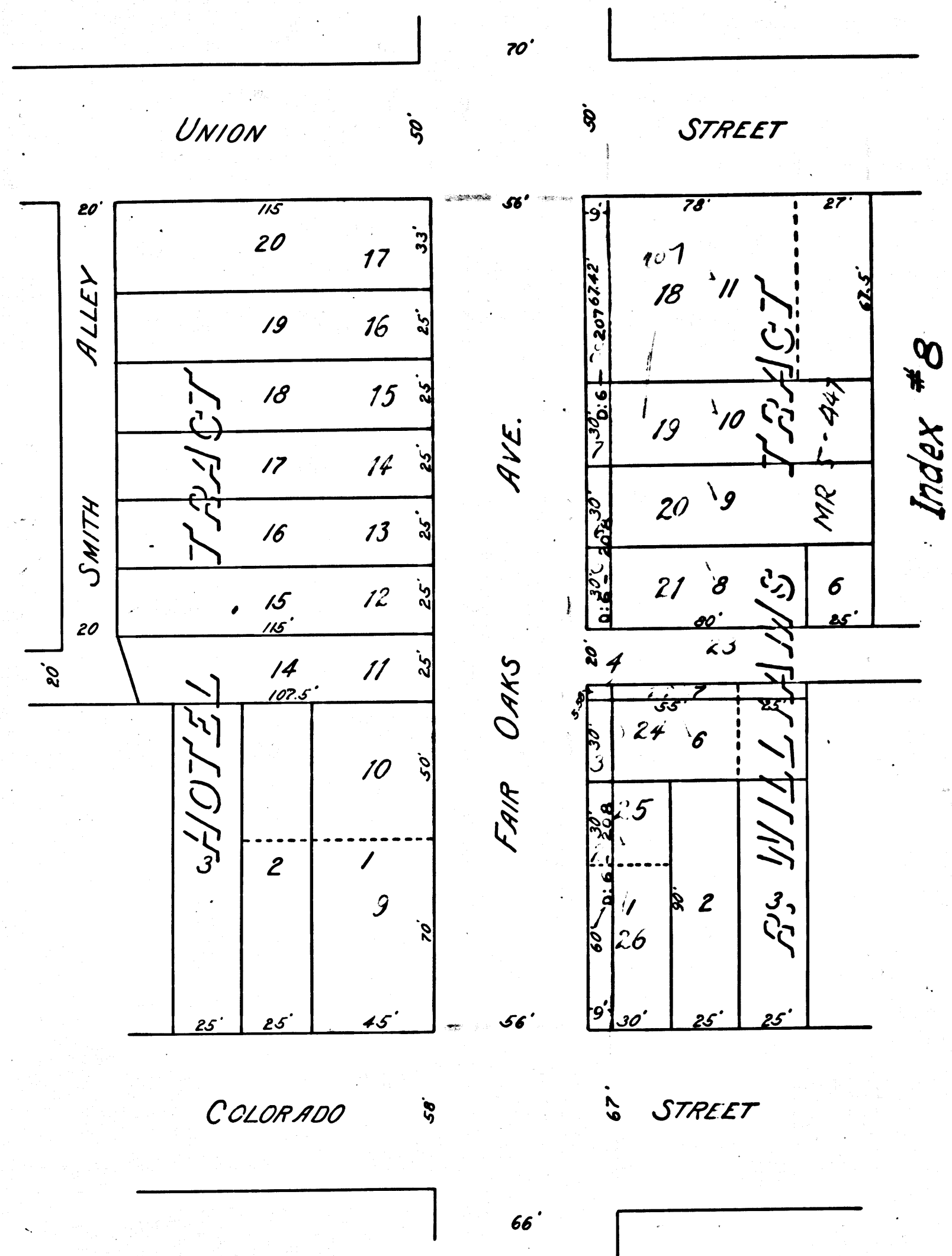


601



R.F. 6011

DIAGRAM

Showing the assessment district and the land to be taken for the widening of Fair Oaks Avenue in the City of Pasadena, from Colorado Street to Union Street, also showing the lands assessed and the relative location of each district, block, lot, or portion of lot and their dimensions.

Each block, lot or portion of lot taken or assessed is designated and described by the number marked thereon in red ink.

Hereon the mark ' means feet. Figures in black ink next to property lines show each the length of said lines in feet, other figures in black ink show the numbers of the lots and blocks. Solid black lines show original lot lines, broken black lines show subdivisions of original lots. green lines show the land to be taken for the widening of said avenue, blue and yellow tinting shows boundaries of subdivisions named and pink tinting shows boundaries of the assessment district. The diagram is drawn to a scale of 100 feet to one inch.

Pasadena, Calif.
March 1904

T. D. Allin
City Engineer.

Filed Aug. 16th 1904