

1001-1s map

Filed Jan 21 1901

INDEX # 37

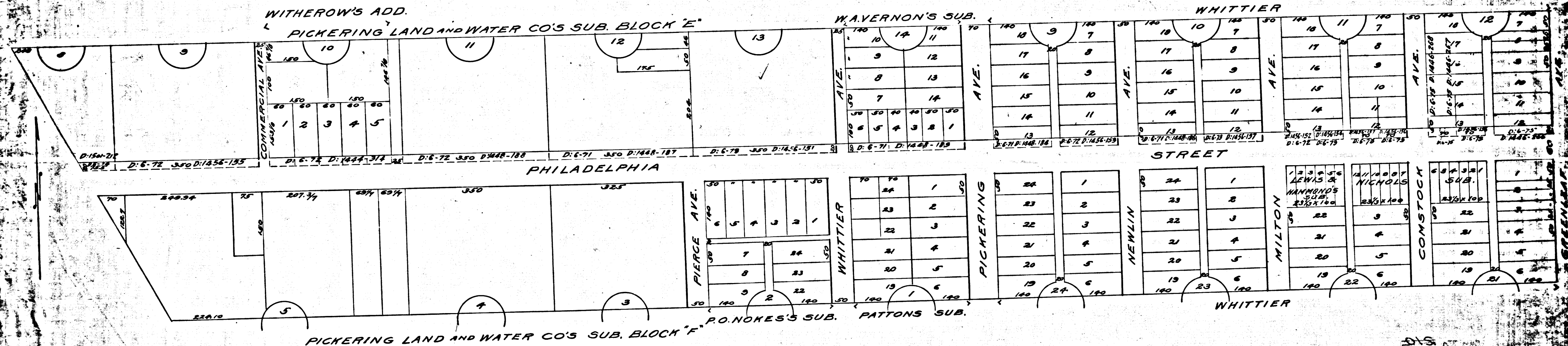
On the 23 day of July 1900, By your Resolution N°5 you declared your intention to cause Philadelphia Street in the City of Whittier to be widened twenty 20 ft. on its North side from Greenleaf Ave. to County Road.

State of California } ss.
County of Los Angeles }
I, Walter E. Butler, City Clerk of the City of Whittier in the County of Los Angeles, State of California, do hereby certify the foregoing to be a full, true and correct copy of the report, Assessment and Plat made and filed by the Commissioners appointed by the Board of Trustees of the City of Whittier, State of California to assess the Benefits and damages and have general supervision of the proposed work of widening Philadelphia Street from Greenleaf Avenue, west to the County Road, as finally confirmed and adopted by said City Council.

In Testimony Whereof, I have hereunto set my name and affixed the Corporate Seal of said City, at my office this 19th day of January 1901.

Walter E. Butler
City Clerk of the City of Whittier

MAP OF
THE WIDENING OF
PHILADELPHIA STREET
IN THE
CITY OF WHITTIER
CALIFORNIA
Scale 150ft = 1 in.



R.F. 1607