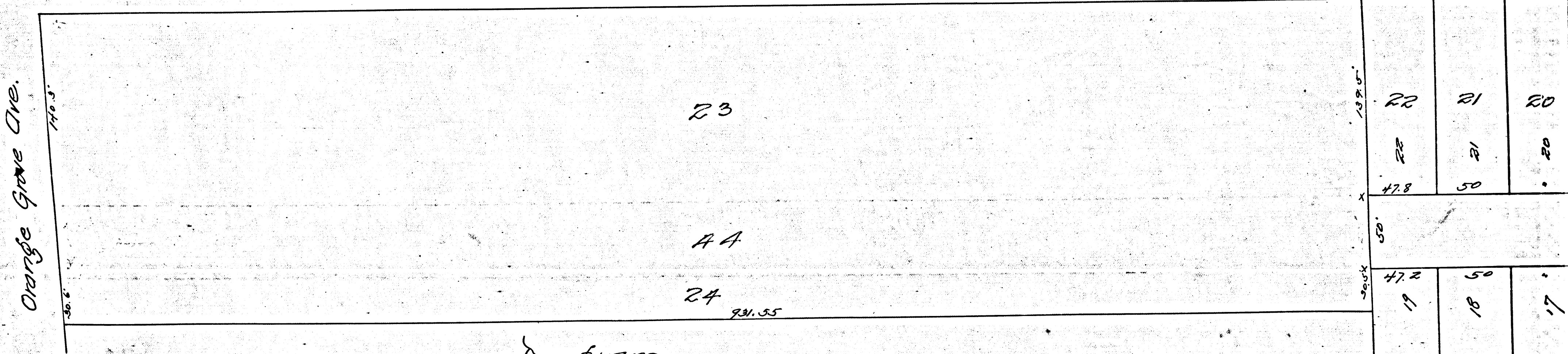


R.F. 608-3
A1 OF A2



Diagram

Showing the assessment district and the land to be taken for the extension of Hinona Avenue in the City of Pasadena from its present terminus to the South line of Orange Grove Avenue, also showing the lands assessed & the relative location of each district, block, lot, or portion of lot or parcel of land and its dimensions each block lot or portion of lot taken or assessed is designated and described by the numbers marked thereon in red ink

Herein the mark ' means feet, Figures in black ink next to property lines show each the length of said line in feet. Other figures in block ink show the numbers of the lots Green section lining shows portion of land to be taken for said extension of Hinona Avenue. Green figures show the dimensions of said portion of land. Red section lining shows area covered by assessment district. Solid black lines show original lot lines Broken black lines show subdivisions of original lots Colored shadings show the boundaries of subdivisions named. The diagram is drawn to a scale of 60 feet to one inch

Pasadena Cal Feb. 1896

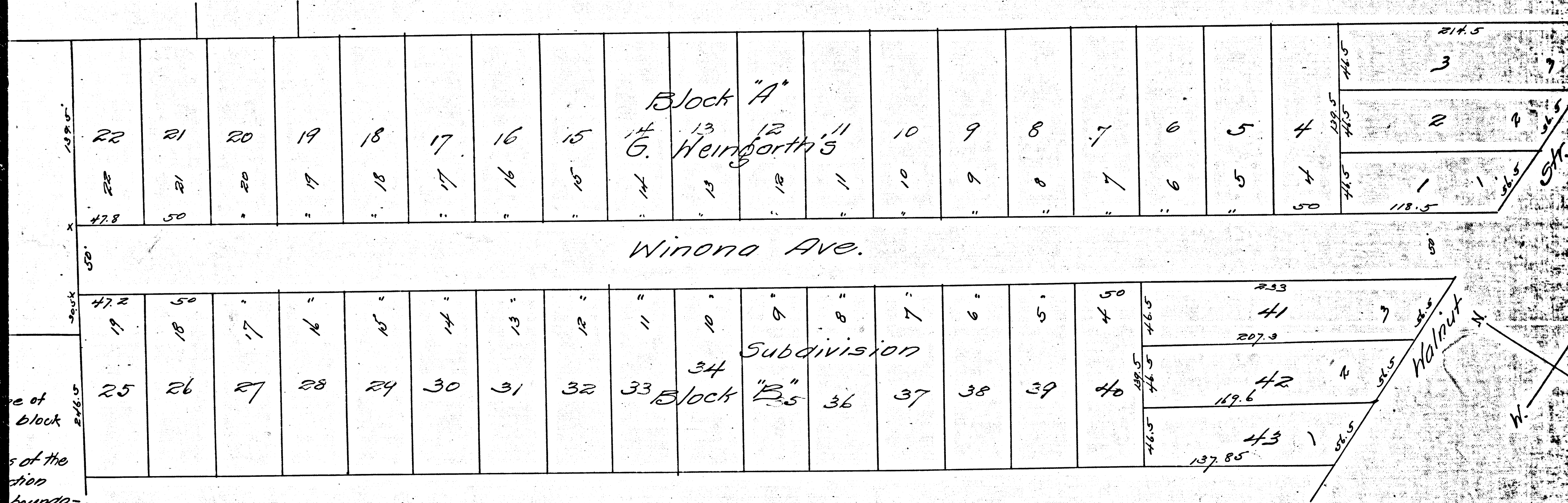
Index #8

Confirmed and Adopted May 4th 1896
by Resolution No 905 of the Board of
Trustees. Pasadena.

Filed March 28. 1896

H.B Clapp City Engineer

R.F. 608-3
 A2 OF A2



City Engineer

Index #8

See D. 6-35
 " 6-46, N. of Orange Grove Av.