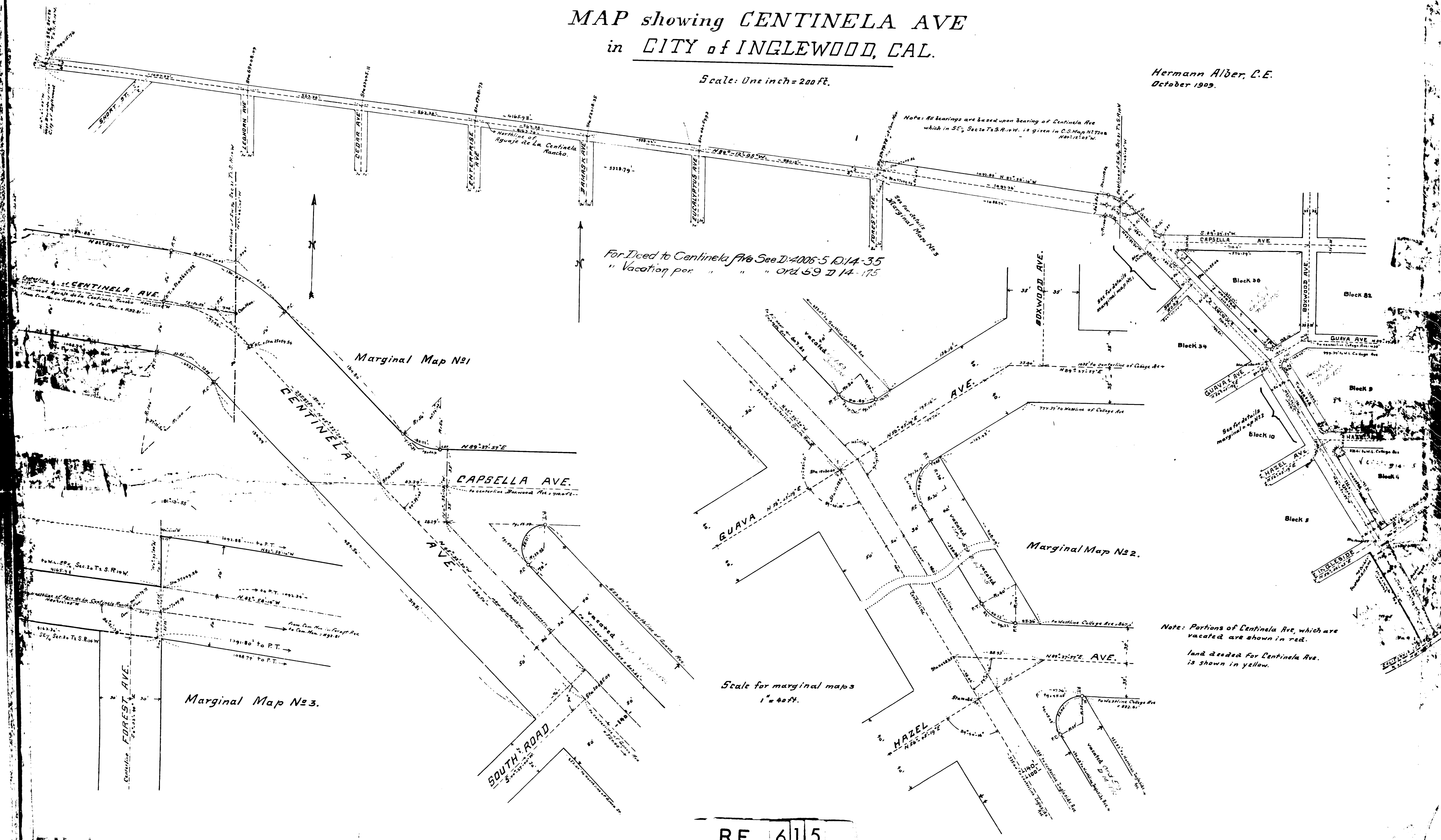


MAP showing CENTINELA AVE in CITY of INGLEWOOD, CAL.

Scale: One inch = 200 ft.

Hermann Aiber, C.E.
October 1909.



For Deed to Centinela Ave See D:4006-5 1014-35
"Vacation per " " " ord 59 D 14-175

Note: All bearings are based upon bearing of Centinela Ave
which in SE 1/4 Sec 24 S. R. W. is given in C.S. Map 152208
North 125° 15' W.

Scale for marginal maps
1" = 40 ft.

R.F. 615