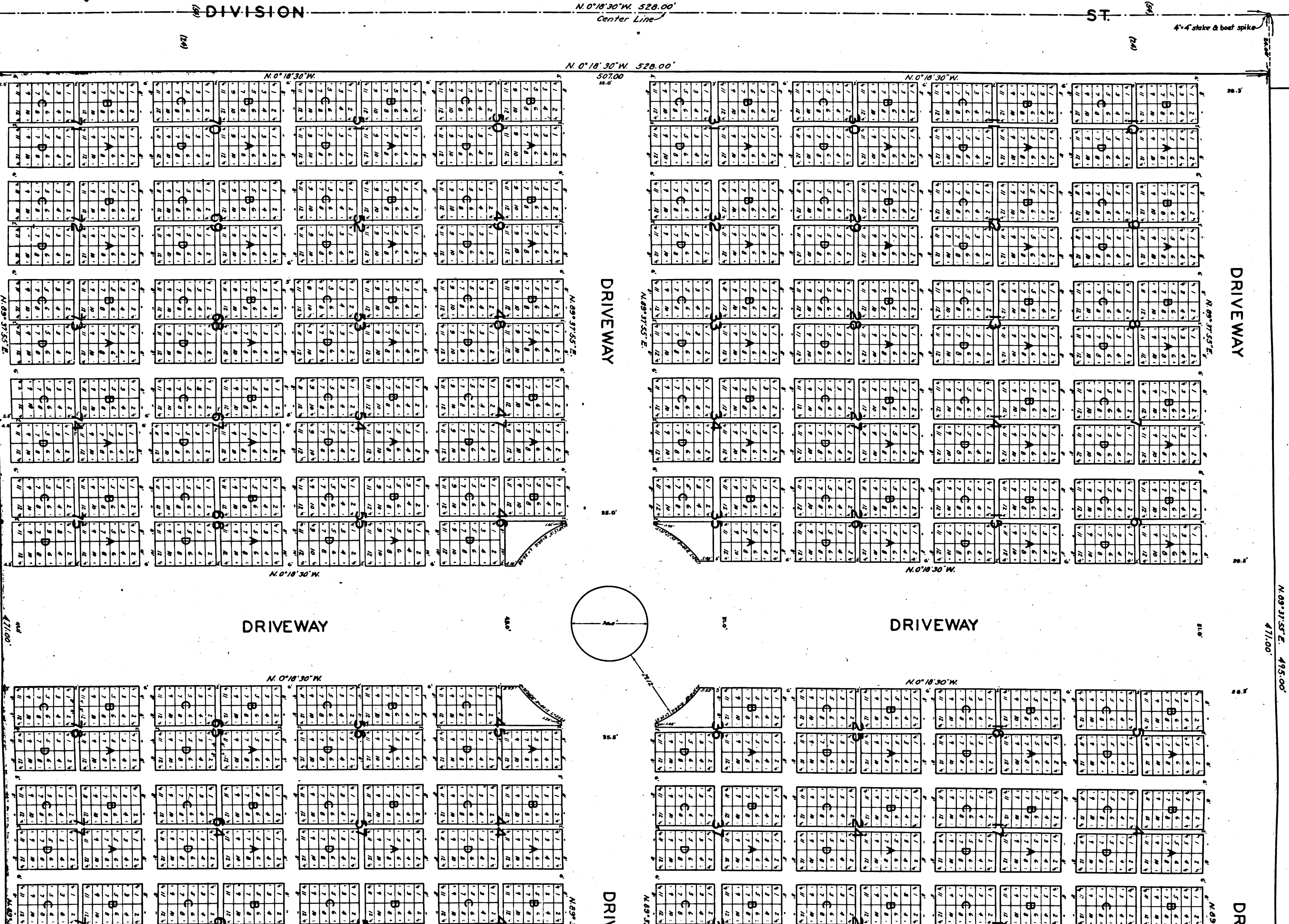


RF 658-R
A1 OF A3

11 TH. ST.

AVENUE

County Surveyor's
Brass Copied Monument



DIVISION

ST.

DRIVEWAY

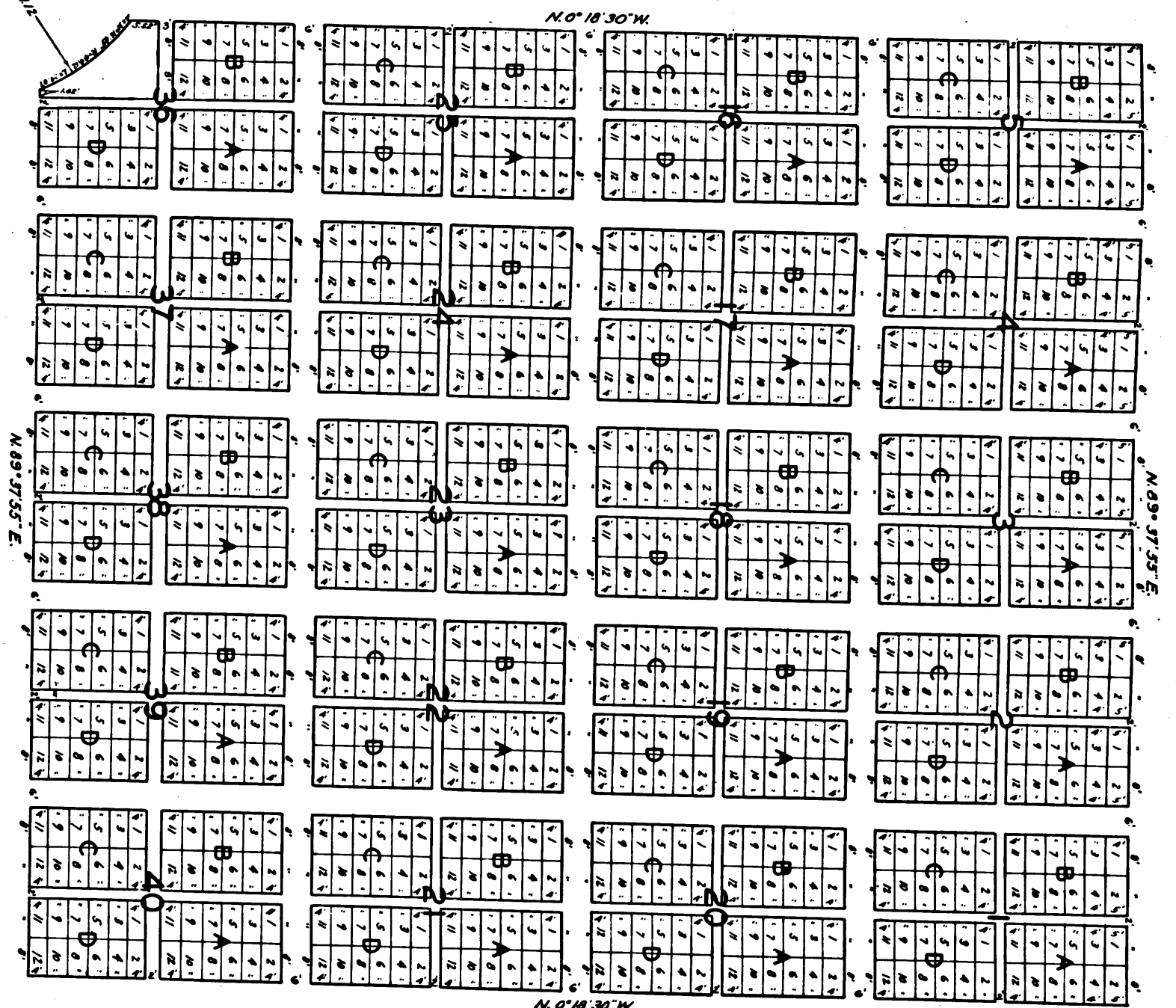
DRIVEWAY

DRIVEWAY

DRIVEWAY

DRIV

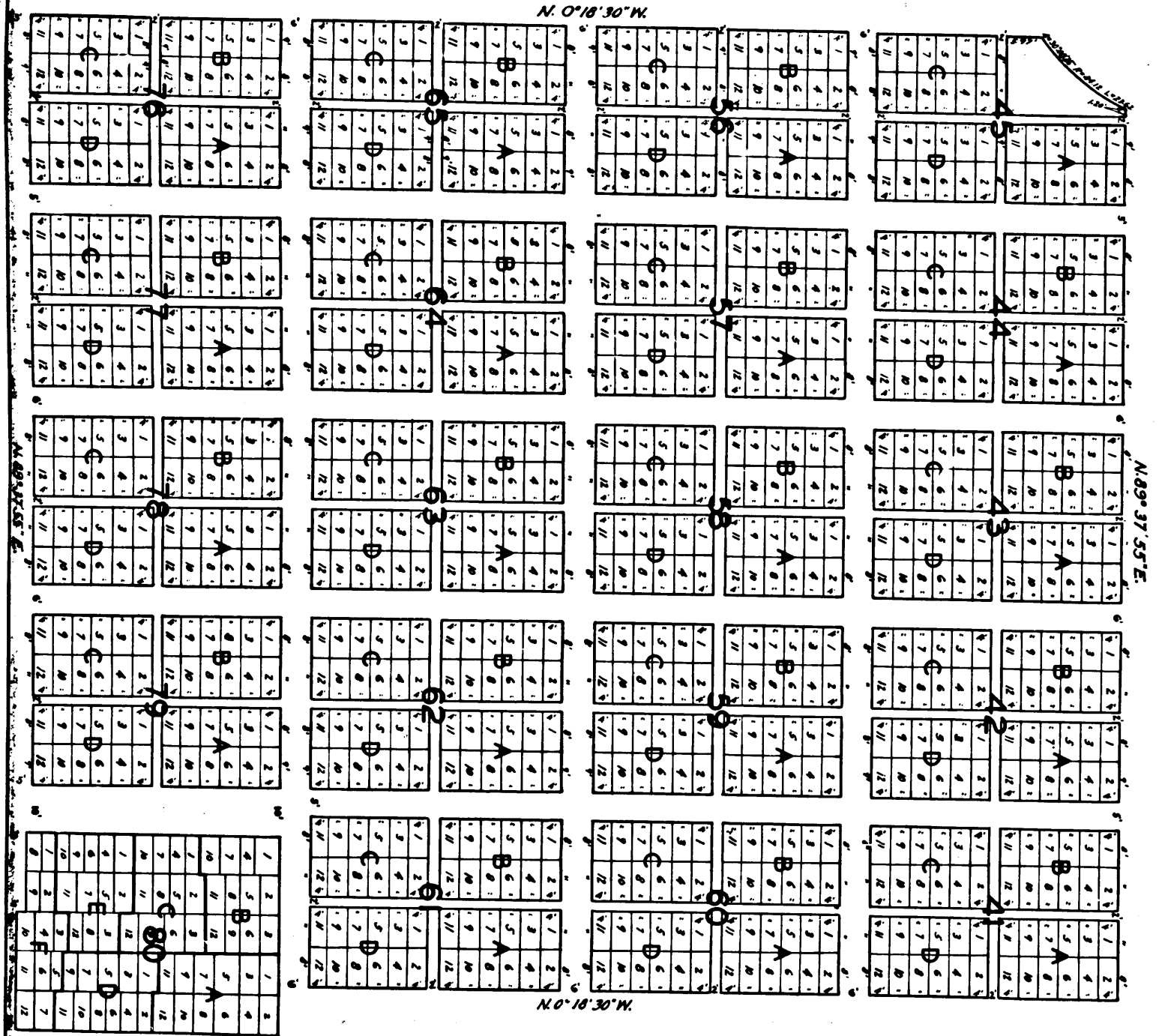
DR



DRIVEWAY

DRIVEWAY

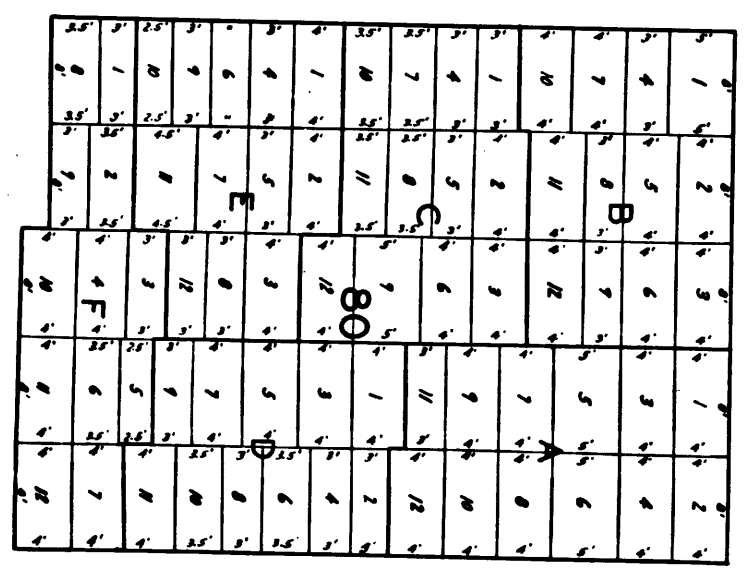
DRIVEWAY



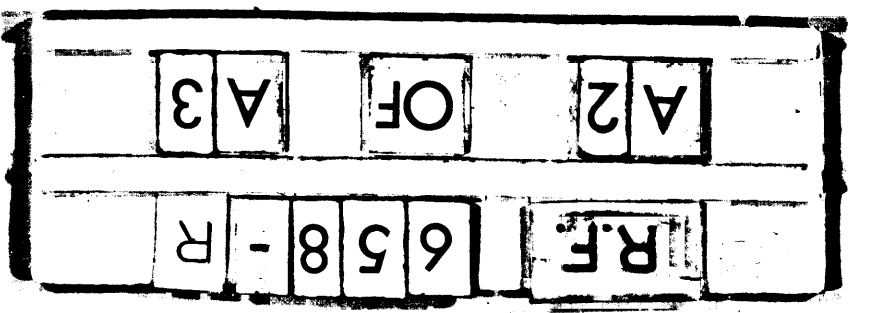
DRIVEWAY

1-8
4'-6\"/>

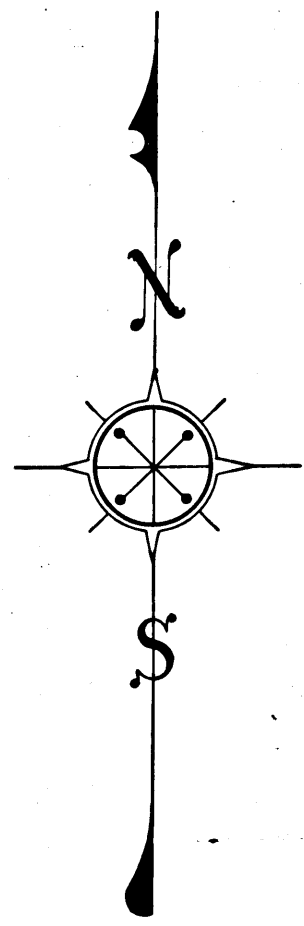
N. 0° 25' 30\"/>



MARGINAL MAP
BLOCK 80
Scale - 1\"/>



BEING
AS S



MAP OF
LANCASTER CEMETERY
LOS ANGELES COUNTY
BEING A REPLAT OF LANCASTER CEMETERY
AS SHOWN ON RECORDER'S FILED MAP NO. 579

J.E. ROCKHOLD - COUNTY SURVEYOR.
SURVEYED -- OCT. - DEC. - 1931.

SCALE - 1" = 20 FT.

Note:
Blocks are numbered from 1 to 80.
Lots are designated 'A', 'B', 'C', 'D' in each block. (Except those in Blks. 35, 36, 45, 46 & 80 which are lettered as shown.)
Single burial spaces are numbered from 1 to 12 in each lot. (Except those in Blk. 80 which are numbered as shown.)
Sht. 70

Filed June 2nd 1932.

Note:
Resolution dated June 2, 1932, copied in Minute Book 179, Page 45 contains "Rules & Regulations for the Government & Administration of Lancaster Cemetery" and is attached to and filed in the Recorder's Office with Recorder's Filed Map No. 658-R.

NEG. 329

1	2	3	4	5	6	7	8	9	10	11	12
13	14	15	16	17	18	19	20	21	22	23	24
25	26	27	28	29	30	31	32	33	34	35	36
37	38	39	40	41	42	43	44	45	46	47	48
49	50	51	52	53	54	55	56	57	58	59	60
61	62	63	64	65	66	67	68	69	70	71	72
73	74	75	76	77	78	79	80	81	82	83	84
85	86	87	88	89	90	91	92	93	94	95	96
97	98	99	100	101	102	103	104	105	106	107	108
109	110	111	112	113	114	115	116	117	118	119	120

MARGINAL MAP
OF
BLOCK 80
Scale - 1" = 10'

