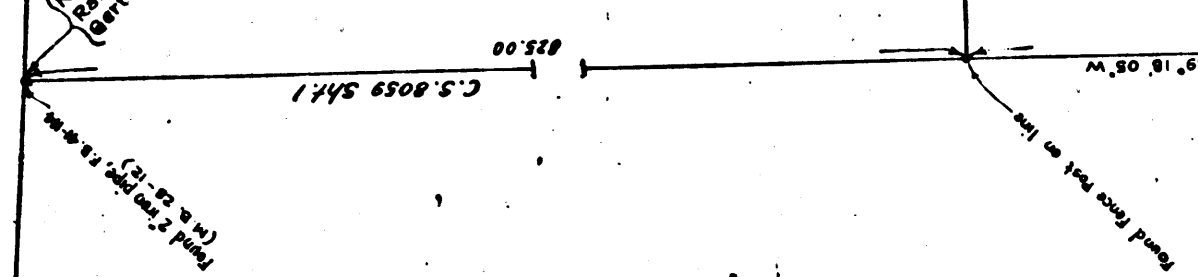


TRACT NO. 2813
M. B. 28-12

N.E. corner of Block 5
Rancho Santa Gertrudis, subdivided for the Santa
Gertrudis Land Association. M.B. 1-502 (M.A. 25-18)



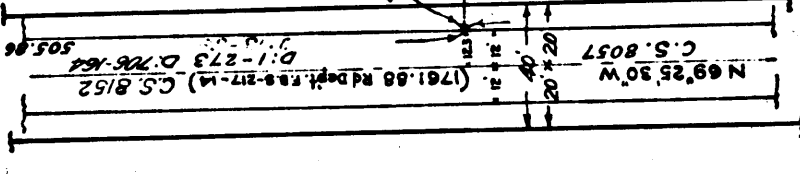
R.F. 660-R
A1 OF A5

Found 20\"/>

Found 20\"/>

Found 10\"/>

Found 10\"/>



Found 20\"/>

Found 10\"/>

Row of Orange Trees
Power & Telephone poles
Macadam Road
C.S. 8152

BRANCH

660R

SHADE

PASSONS
C.S. 8057

N.W. Corner of Block 5
Rancho Santa Gertrudis, subdivided for the
Santa Gertrudis Land Association
M.B. 1-502 (M.A. 25-18)

BOULEVARD

Found 10\"/>

M.S. 27
M.S. 28

SUBJECT

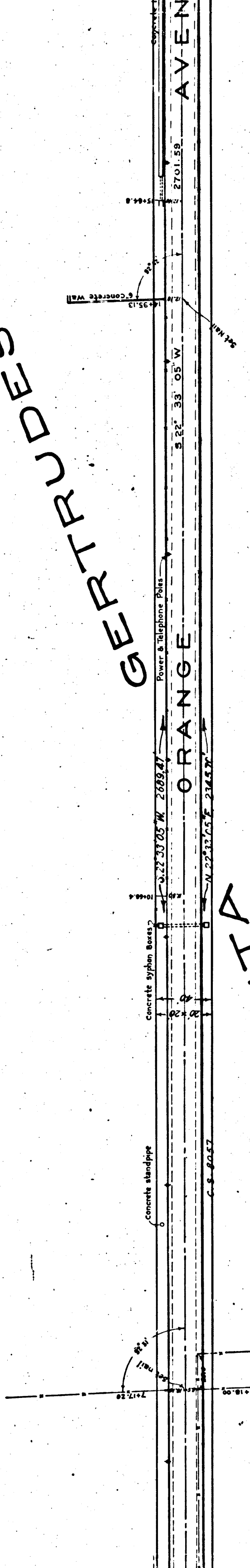
GERTRUDE'S

AVENUE

ORANGE

SANTA

FRANCO



Portion of ORANGE AVENUE declared a public highway July 22
Boundaries of portion declared a public highway are shown in

REF.	660-R
A2	OF A5

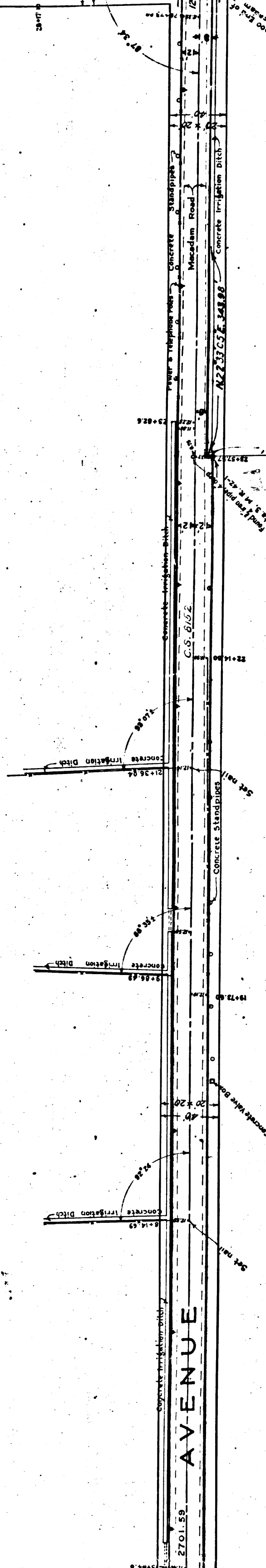
OR

SANTA

BLOCK'S THE

FOR 1-502
(M.R. 1-32-18)

SUBDIVIDED



declared a public highway July 22, 1918. Road Boer 18-261, D.27-140
declared a public highway are shown in brown.

R.F.	660-R
A3	OF A5

660R

M 11

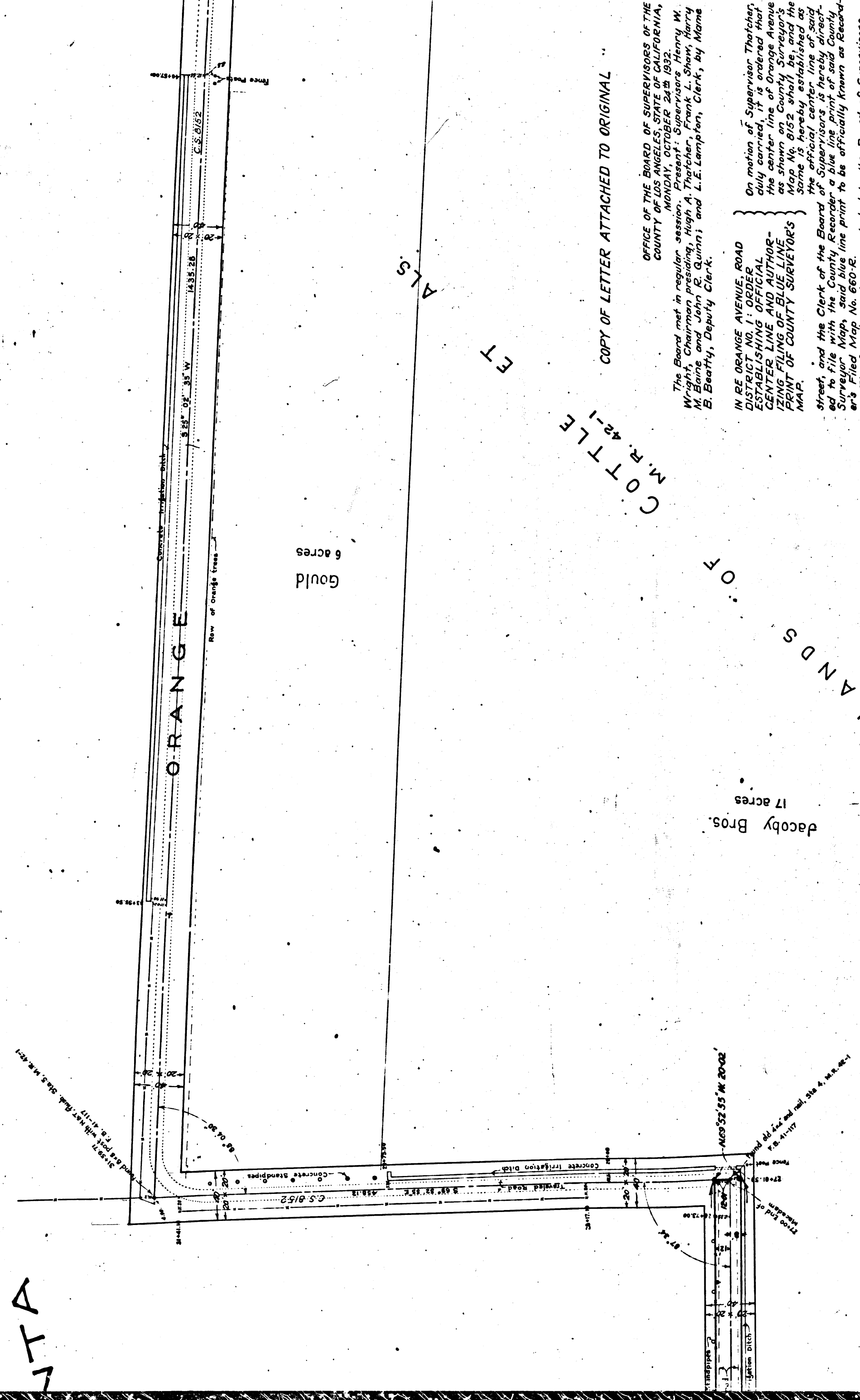
041

ASSOC

LAND

GERTRUDES

ANTA



Gould 6 acres

JACOBY BROS. 17 acres

M. R. 42-1

COPY OF LETTER ATTACHED TO ORIGINAL

OFFICE OF THE BOARD OF SUPERVISORS OF THE COUNTY OF LOS ANGELES, STATE OF CALIFORNIA, MONDAY, OCTOBER 24th 1932.

The Board met in regular session. Present: Supervisors Henry M. Wright, Chairman presiding, Hugh A. Thatcher, Frank L. Shan, Harry W. Baine, and John E. Quinn; and L.E. Lampton, Clerk, by Marie B. Beatty, Deputy Clerk.

IN RE ORANGE AVENUE ROAD DISTRICT NO. 1, ORDER ESTABLISHING OFFICIAL CENTER LINE AND AUTHORIZING FILING OF BLUE LINE PRINT OF COUNTY SURVEYOR'S MAP.

On motion of Supervisor Thatcher duly carried, it is ordered that the center line of Orange Avenue as shown on County Surveyor's Map No. 8152 shall be, and the same is hereby established as the official center line of said street, and the Clerk of the Board of Supervisors is hereby directed to file with the County Recorder a blue line print of said County Surveyor Map No. 660-R.

The foregoing order was adopted by the Board of Supervisors of the County of Los Angeles, State of California, on October 24th 1932, and is entered in the Minutes of the Board of Supervisors of said County.

L. E. LAMPTON, County Clerk of the County of Los Angeles, State of California, and ex-officio Clerk of the Board of Supervisors of said County.

By Marie B. Beatty Deputy

RF.	660-R
A4	OF A5

MAP OF
ORANGE AVENUE
 FROM
 SHADE LANE
 TO
 ANAHEIM TELEGRAPH R

COUNTY SURVEYORS MAP NO. 8152
 ALFRED JONES, ACTING COUNTY SURVEYOR
 SURVEYED MAY 1918

SCALE: 1 INCH = 50 FEET
 P. B. 41-113 to 120

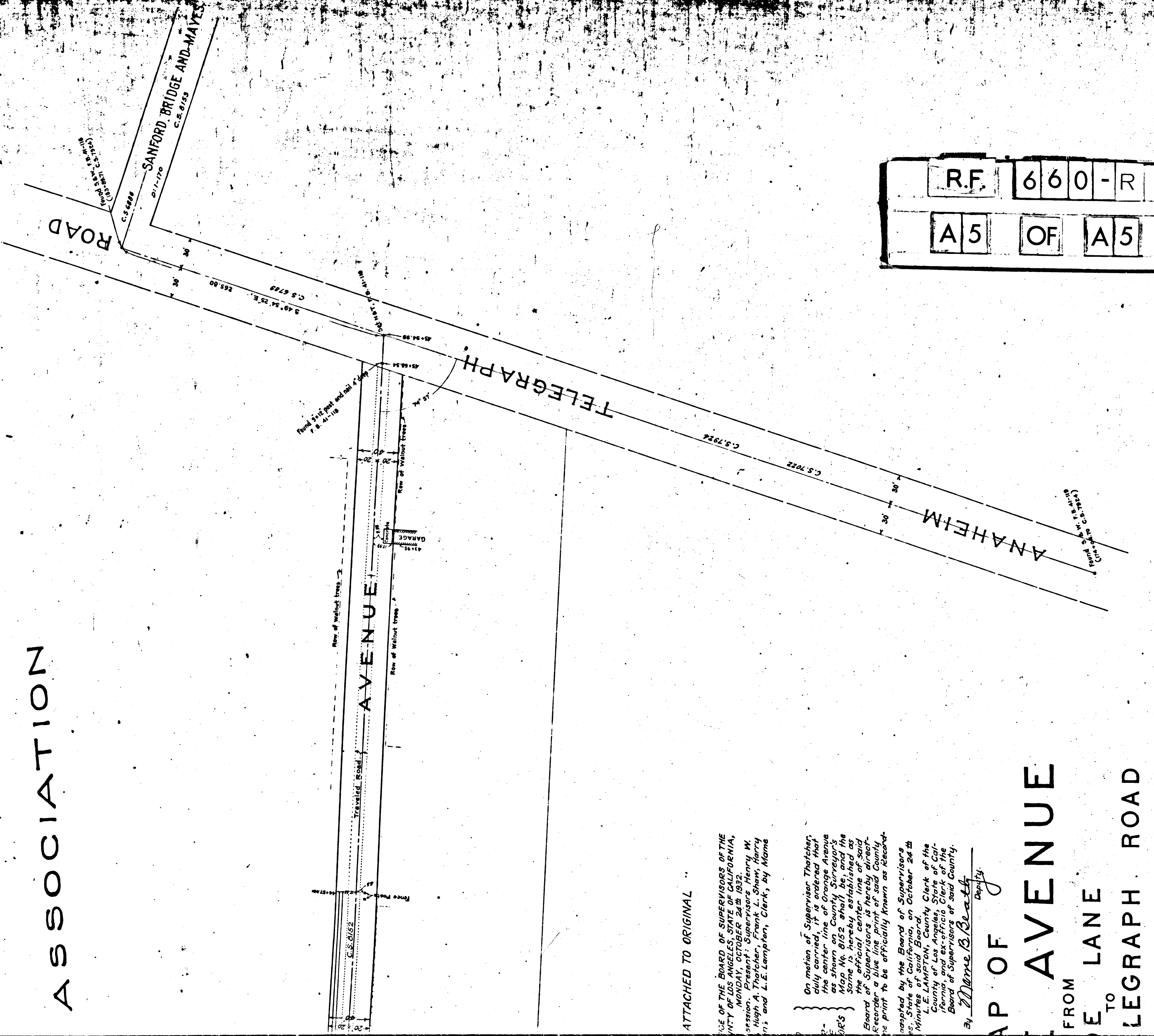
Surveyed under instructions of the Board of Supervisors, per order dated August 1918.
 Bearings based on bearing of Shade Lane as shown on County Surveyors

Field work by Comly
 office work by Memilian
 checked by Meary

Parton Drawn 27-140 R.E. 19-261

Filed Nov. 2nd 1932
 Sht. 33
 Sht. 36

ASSOCIATION



R.F. 660-R
A5 OF A5

ATTACHED TO ORIGINAL

ON MOTION OF SUPERVISOR THATCHER, duly carried, it is ordered that the center line of Orange Avenue as shown on County Surveyor's Map No. 8152, shall be, and the same is hereby established as the official center line of said road as shown on said County Surveyor's Map No. 8152, as recorded in the records of said County.

Approved by the Board of Supervisors of the State of California, on October 24th Minutes of said Board.
L. E. LAMPTON, County Clerk of the County of Los Angeles, State of California, and ex-officio Clerk of the Board of Supervisors of said County.

By Marion B. Beatty Deputy

MAP OF
ORANGE AVENUE
FROM
E LANE
TO
TELEGRAPH ROAD
SHEETERS MAP NO 8152
ACTING COUNTY SURVEYOR

SCALE: 1 INCH = 50 FEET
S. 41-115 to 120
Board of Supervisors, per order dated April 29, 1916.
Lane as shown on County Surveyors Map No 8057

Work by Comly
check by McMillan
1 by Treacy
27-1450 R.F. 660-19-261
27-1450
APR 29 1916