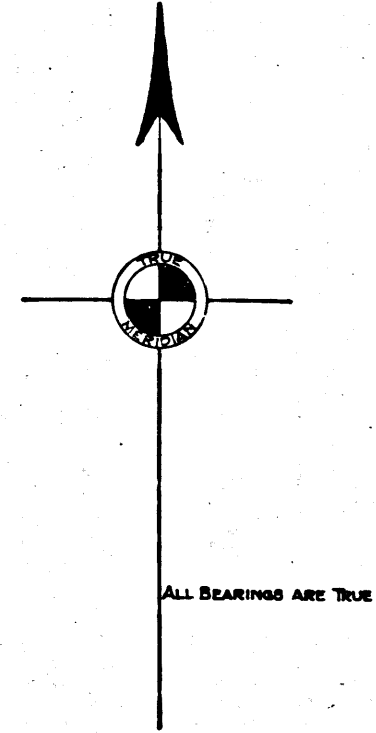
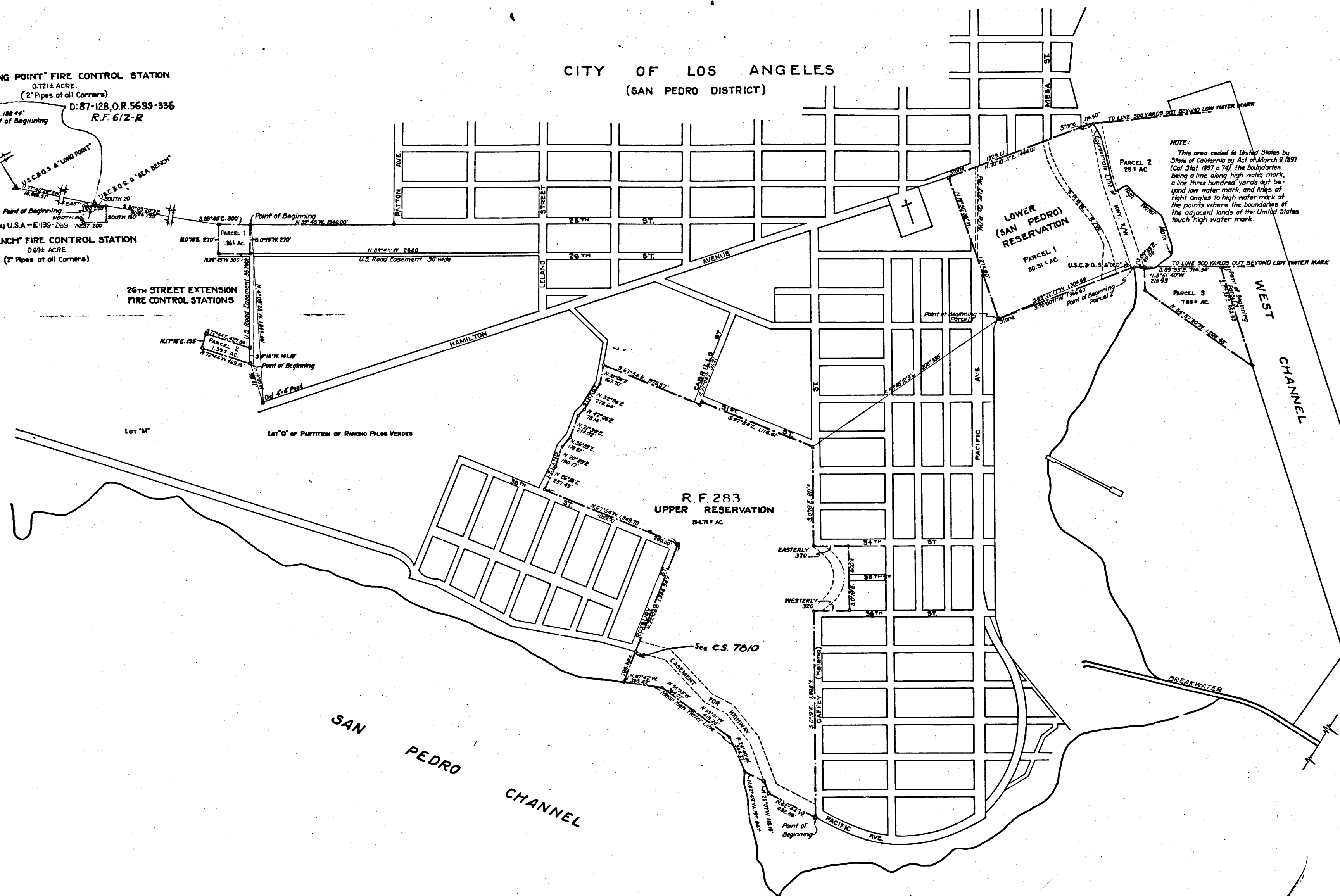


CITY OF LOS ANGELES
(SAN PEDRO DISTRICT)

"LONG POINT" FIRE CONTROL STATION
0.7213 ACRE
(2" Pipes at all Corners)
D: 87-128, O.R. 5639-336
R.F. 612-R

"SEA BENCH" FIRE CONTROL STATION
0.692 ACRE
(2" Pipes at all Corners)

26TH STREET EXTENSION
FIRE CONTROL STATIONS



NOTE:
This area ceded to United States by State of California by Act of March 3, 1857 (Cal Stat 1857, p. 74), the boundaries being a line along high water mark, a line three hundred yards out beyond low water mark, and lines at right angles to high water mark at the points where the boundaries of the adjacent lands of the United States touch high water mark.

PACIFIC

OCEAN

R.F. 698-R

O.Q.M.G.
CONSTRUCTION DIVISION
FORT MACARTHUR
LOS ANGELES COUNTY, CALIFORNIA
BOUNDARY MAP

SCALE 1" = 500'
0 500 1000 1500 2000 2500 FEET
JULY 1933

TOTAL AREA OF RESERVATION - 226.631± ACRES.

RESERVATION BOUNDARY
CONCRETE MARK (except as noted)

CHECKED BY
W.D.M. P.W.

APPROVED BY DIRECTOR:
Robert B. ...
DRIG. GEN., O.M.C., U.S. ARMY.

Filed Oct. 16th 1933

6236-104