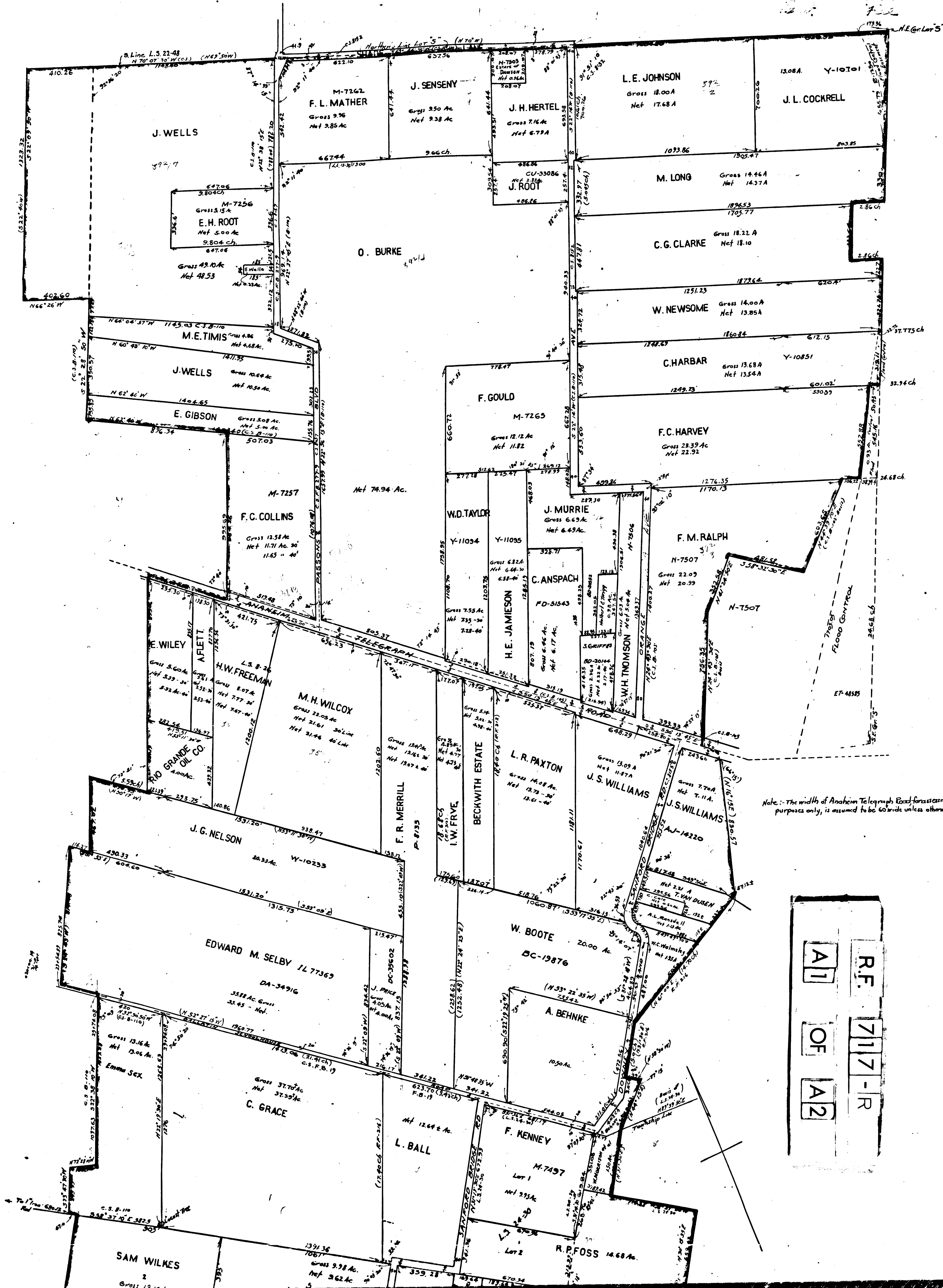
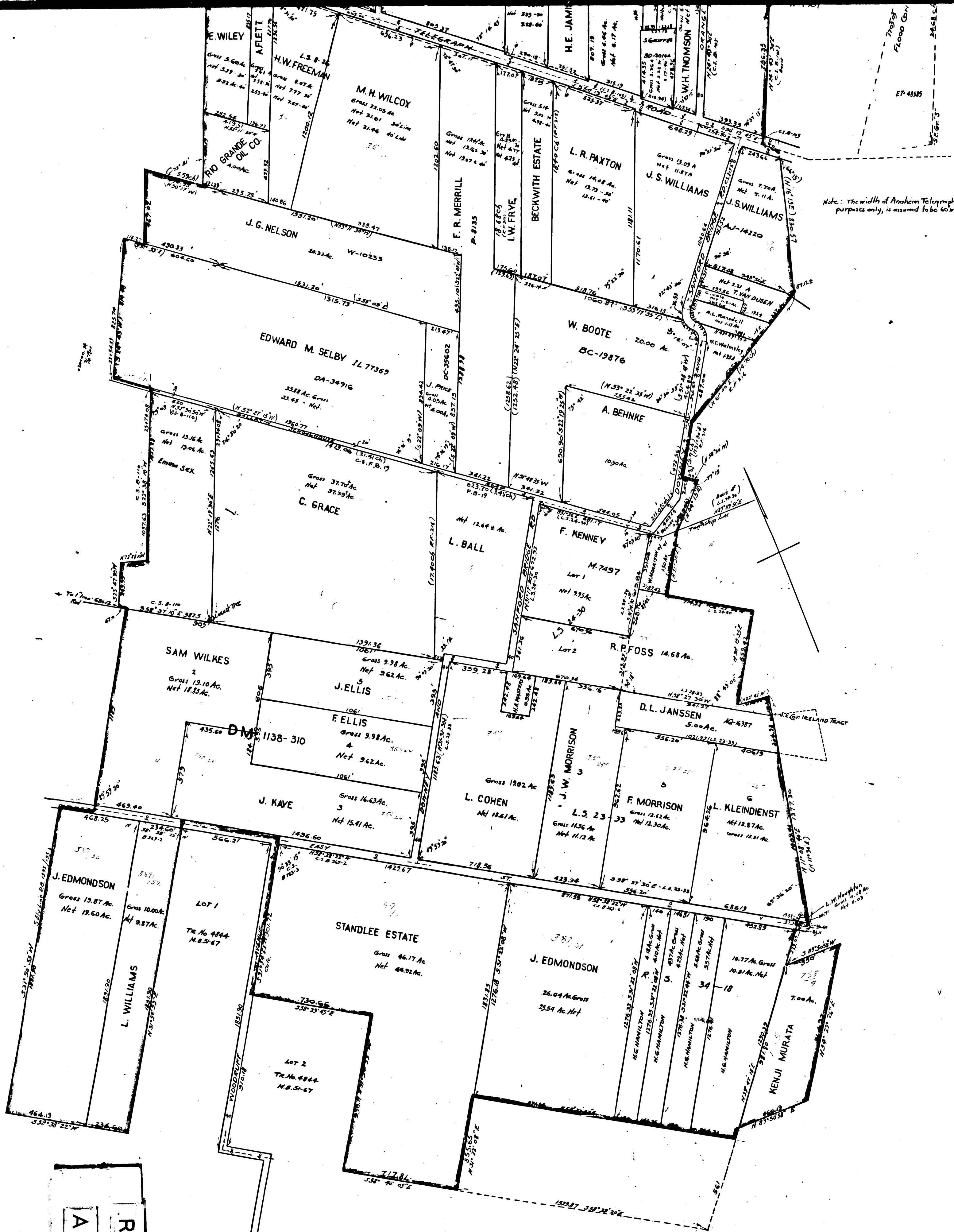


17334
 NE of Lot 5
 File



Note: The width of Anaheim Telegraph Road for assessment purposes only, is assumed to be 60 wide unless otherwise noted

R.F. 717-R
 OF
 A1
 A2



Note: The width of Anaheim Telegraph Road for assessment purposes only, is assumed to be 60 wide unless otherwise noted.

WALNUT IRRIGATION DISTRICT

In the RANCHO SANTA GERTRUDES, County of LOS ANGELES, State of CALIFORNIA
 Revised to date from Map filed for record December 18, 1913
 Scale 1" = 4 chains

C. E. Yost, Licensed Surveyor
 No. 1230

October, 1934

R.F. 717-R
 OF 12
 A2