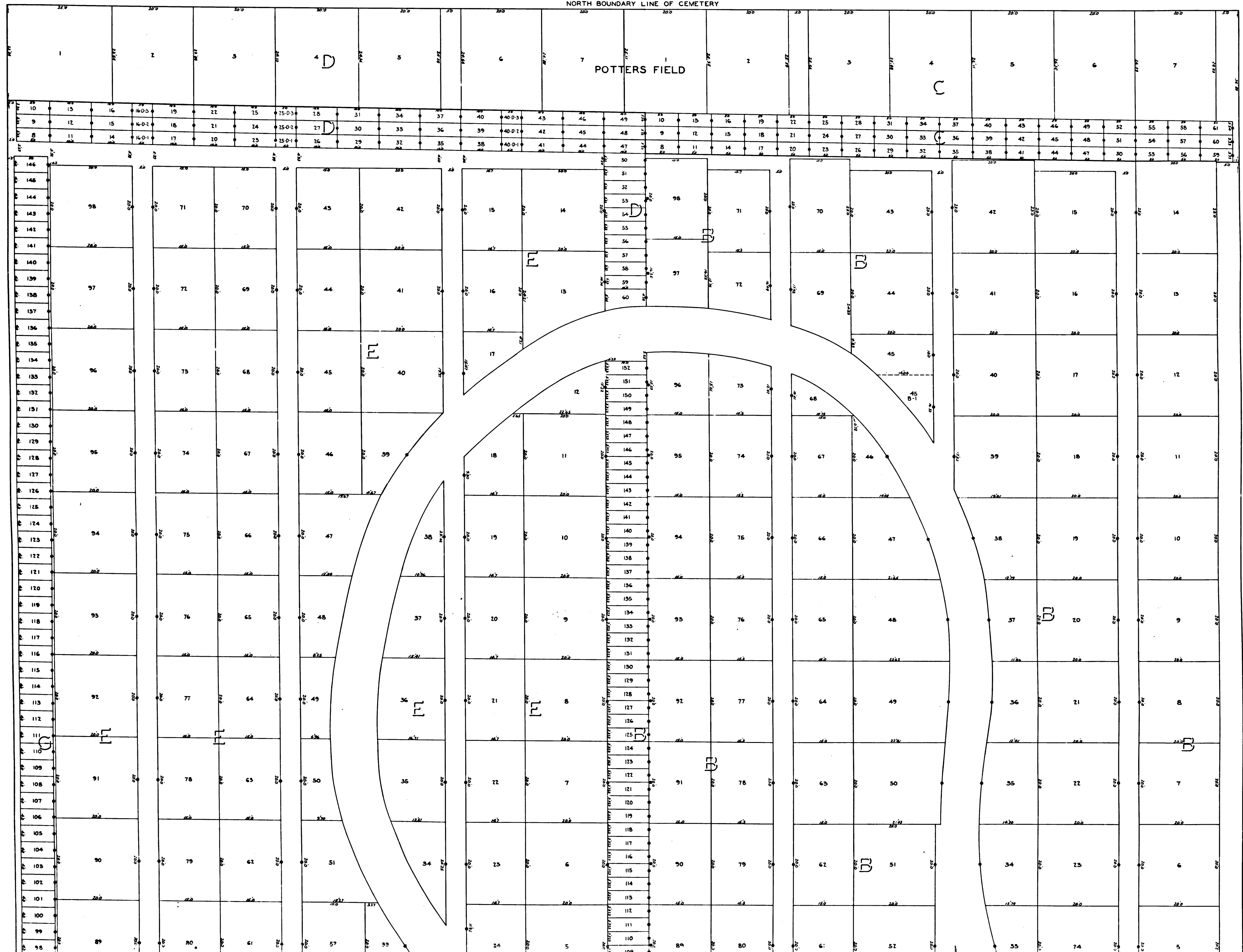


NORTH BOUNDARY LINE OF CEMETERY

POTTERS FIELD

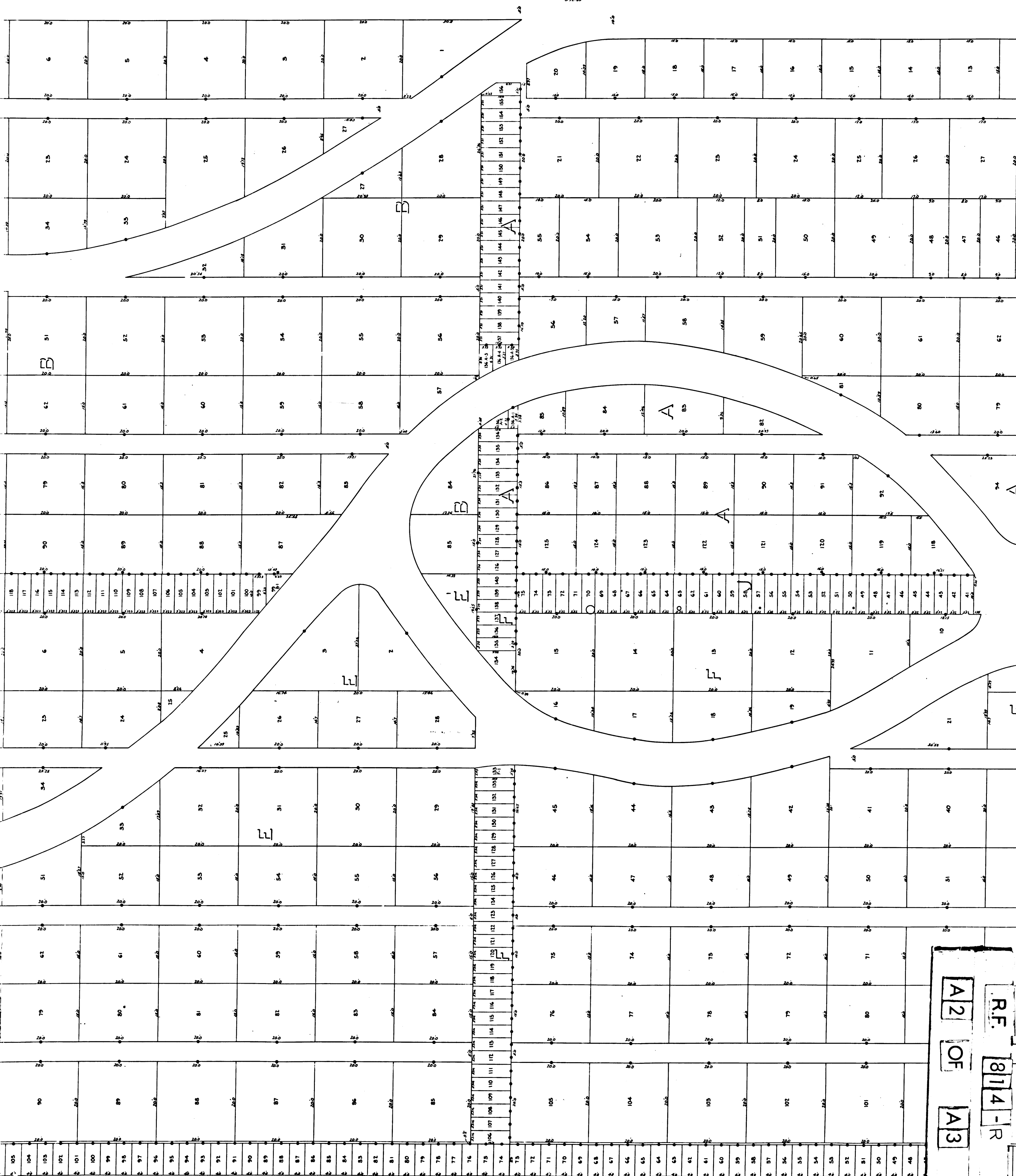


SIGNAL HILL CEMETERY (KNOWN AS THE LONG BEACH CITY CEMETERY) AMENDED MAP

BEING AN AMENDED MAP OF RECORDERS FILE MAP NO. 230, OF RECORDERS FILE MAP NO. 567-R, AND RECORDERS FILE MAP NO. 611-R, BEING A PORTION OF THE EAST FIVE ACRES OF FARM LOT 68, THE AMERICAN COLONY TRACT, AS PER MAP RECORDED IN BOOK 19, PAGES 89 AND 90 MISCELLANEOUS RECORDS OF THE COUNTY OF LOS ANGELES, STATE OF CALIFORNIA.
REFERENCES—FIELD BOOK 735, PAGES 47 TO 76—FIELD BOOK X-260, PAGES 43 TO 45—MAP-FILE NO. E-43
OFFICE OF CITY ENGINEER, CITY OF LONG BEACH, CALIFORNIA. SCALE 1 INCH = 10 FEET

FILED OF

WEST LINE OF ORANGE AVENUE



WEST LINE OF THE EAST FIVE ACRES OF FARM LOT 68, AMERICAN COLONY TRACT

R.F. 814-R
 OF
 A2 OF A3

MAP No. E-45

FILED IN THE OFFICE OF THE CITY ENGINEER-DIRECTOR OF PUBLIC SERVICE
OF THE CITY OF LONG BEACH THIS 30th DAY OF January 1938

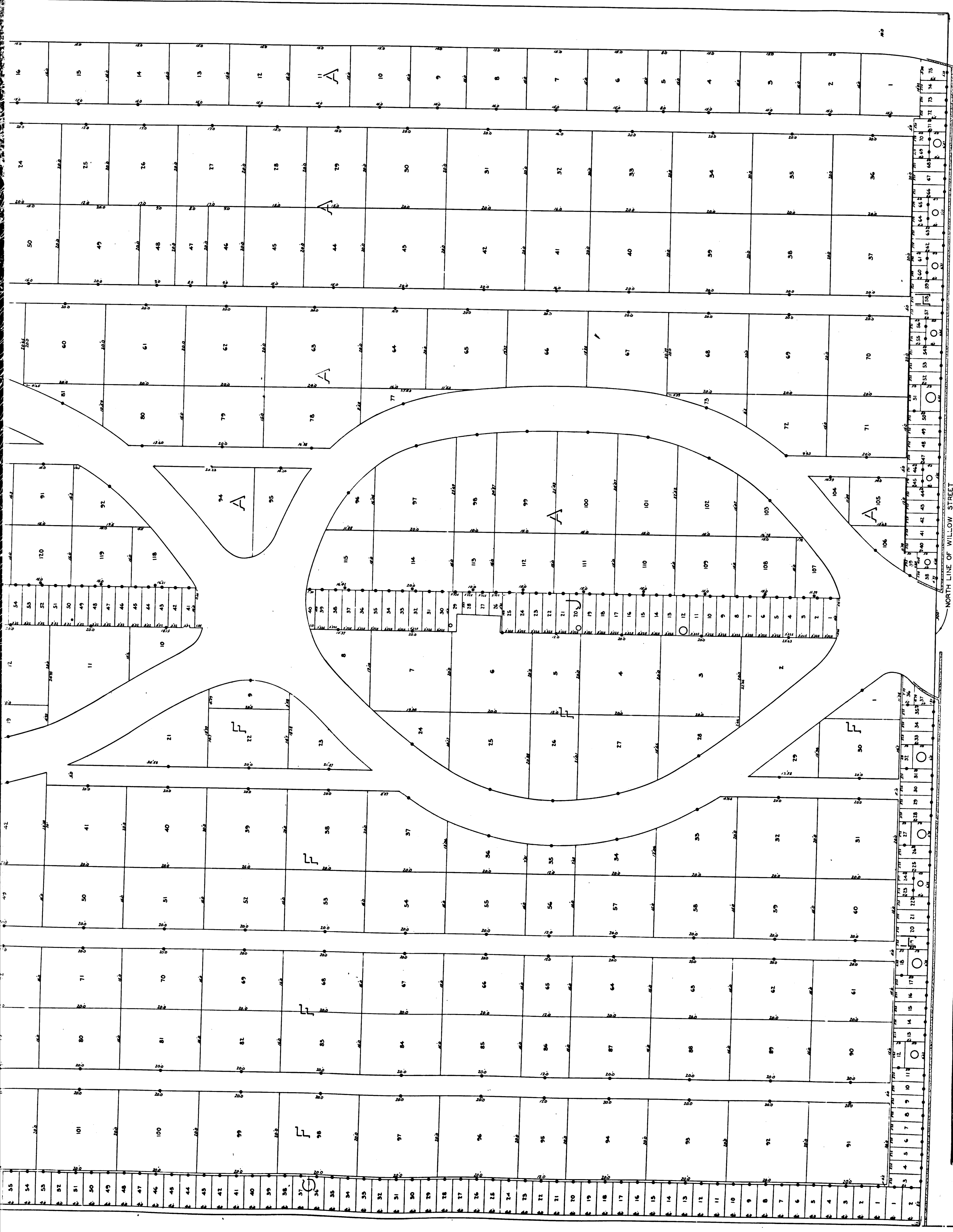
J. M. ...
CITY ENGINEER-DIRECTOR OF PUBLIC SERVICE

I HEREBY CERTIFY THAT THE ATTACHED MAP WAS APPROVED
BY THE CITY COUNCIL OF THE CITY OF LONG BEACH ON THE
10th DAY OF OCTOBER 1938

Frank J. ...
CITY CLERK OF THE CITY OF LONG BEACH.

WEST LINE OF ORANGE AVENUE

NORTH LINE OF WILLOW STREET



RECORDED OCTOBER 13, 1938 IN THE
OFFICE OF THE COUNTY RECORDER OF
LOS ANGELES COUNTY, STATE OF
CALIFORNIA. MAP No. 814-R
INDEX 30

R.F. 814-R
OF A3