

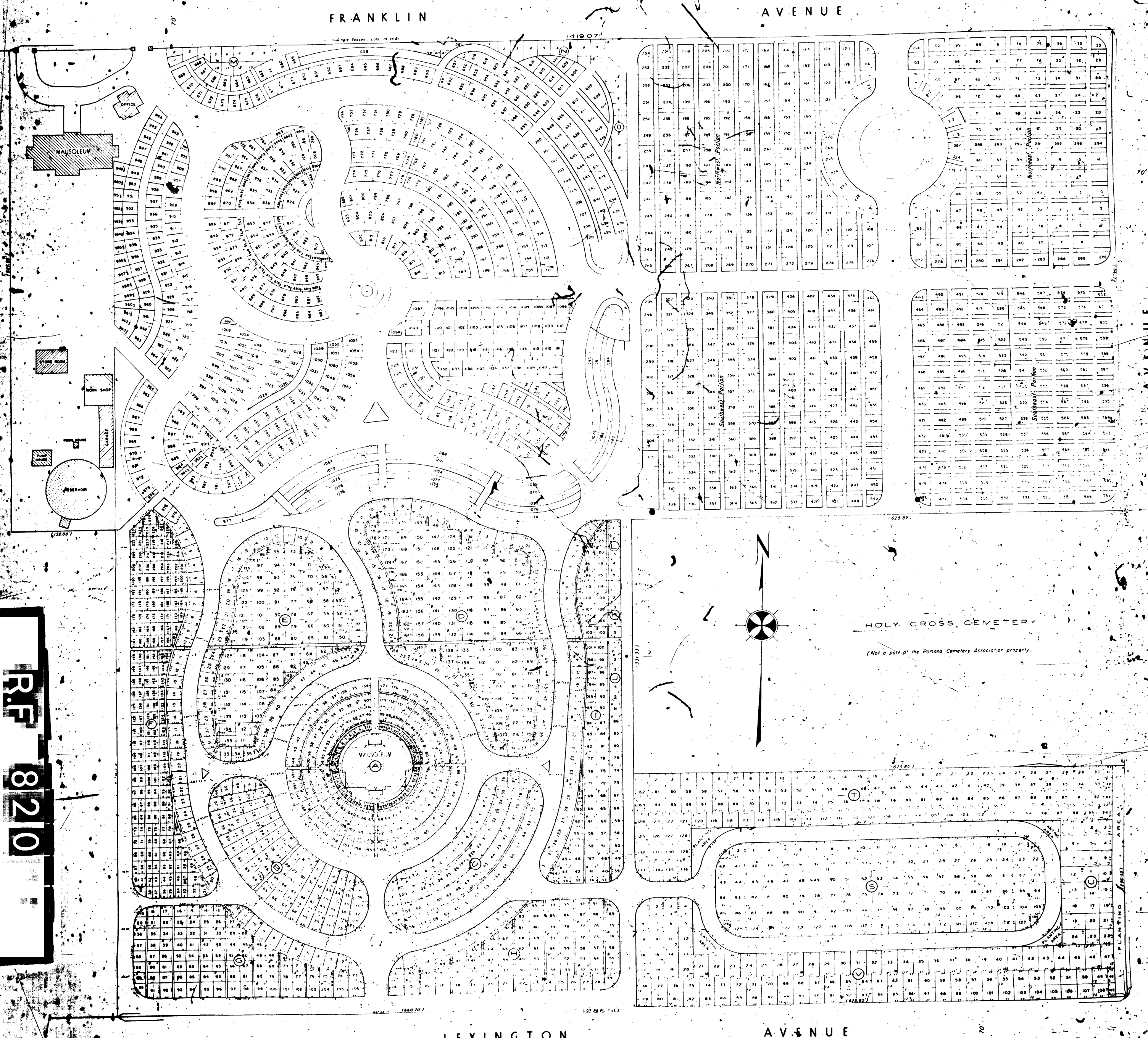
POMONA CEMETERY ASSOCIATION

INTERMENT PROPERTY

IN THE CITY OF POMONA, CALIFORNIA.

BEING A PORTION OF LOTS 3 & 4, - BLOCK 'C' - OF THE PHILIPS ADDITION TO POMONA
— AS PER MAP RECORDED IN BOOK 5 - PAGE 6 - OF MISCELLANEOUS RECORDS —
RECORDS OF LOS ANGELES COUNTY - STATE OF CALIFORNIA.

REPLATED BY - CHARLES C CONGER - REG ENGR NO 4243
JANUARY 1940 - SCALE 1 IN = 30 FT



R.F. 8210

Filed Feb. 15, 1940