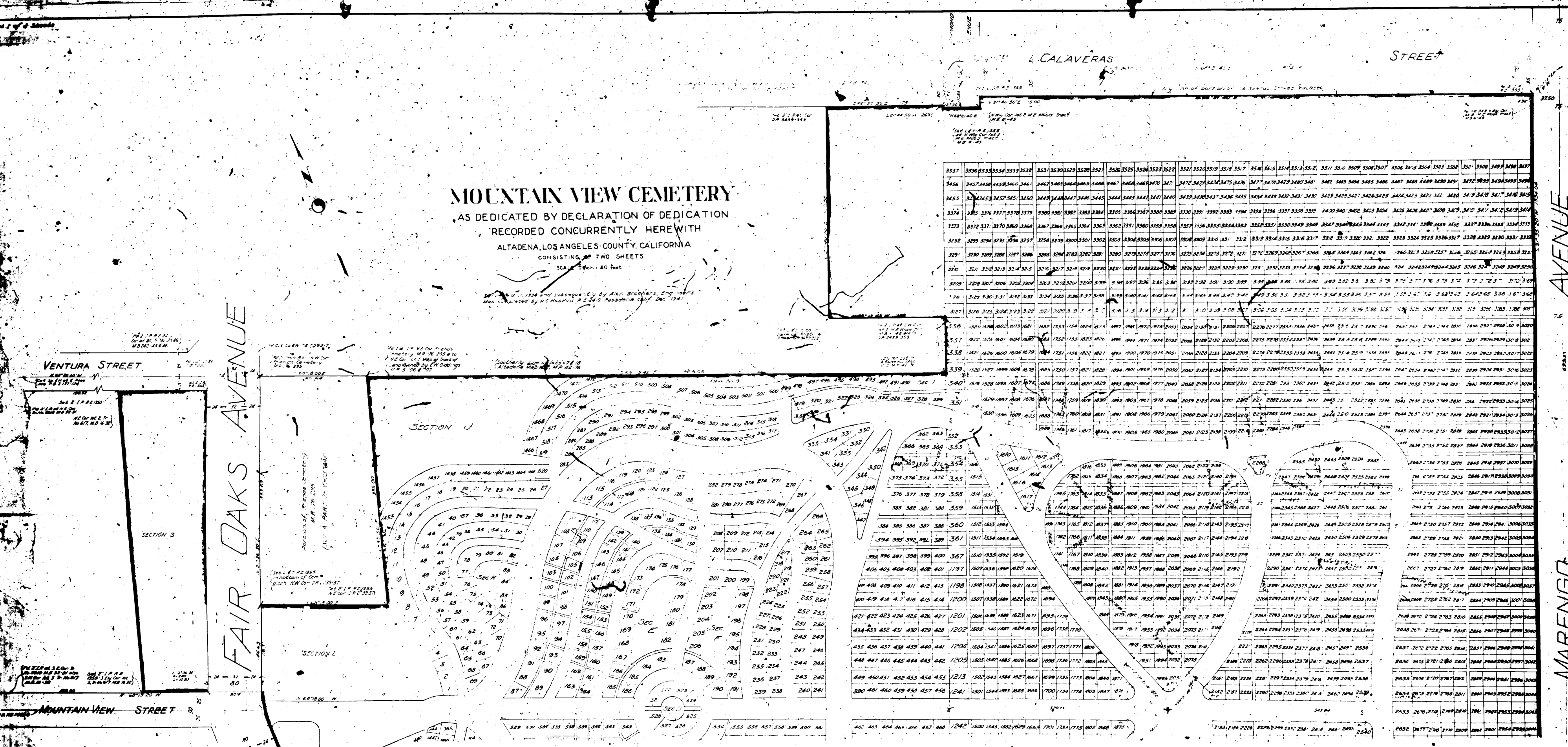


MOUNTAIN VIEW CEMETERY

AS DEDICATED BY DECLARATION OF DEDICATION
RECORDED CONCURRENTLY HERewith
ALTADENA, LOS ANGELES COUNTY, CALIFORNIA
CONSISTING OF TWO SHEETS
SCALE 1" = 40 FEET



Filed Dec. 22, 1941

R.F. 903-R-1

MOUNTAIN VIEW STREET

FAIR OAKS AVENUE

FIGUEROA DRIVE

SACRAMENTO STREET

MARENGO AVENUE

RAYMOND LANE

By Authority of the PALADINA CEMETERY ASSOCIATION,
 the Board of Trustees of MOUNTAIN VIEW CEMETERY, a public
 corporation, and the Board of Trustees of the PALADINA CEMETERY ASSOCIATION,
 a public corporation, the following plat has been made in accordance with
 the provisions of said Association.

Walter J. Marquardt President
George J. Brown and Secretary

STATE OF CALIFORNIA
 COUNTY OF LOS ANGELES

I, *Walter J. Marquardt*, County Clerk of said County, do hereby certify that the foregoing plat has been duly filed for record in the office of the County Clerk of said County, and that the same is a true and correct copy of the original plat as the same appears in the files of the County Clerk of said County.

Walter J. Marquardt
 County Clerk of said County of Los Angeles, State of Calif.

This map compiled by me, correct, represents
 a survey made by *Allen Brothers* in 1934 and
 subsequently.

Allen Brothers

Filed Dec 22 1947

R.F 903-R-2