

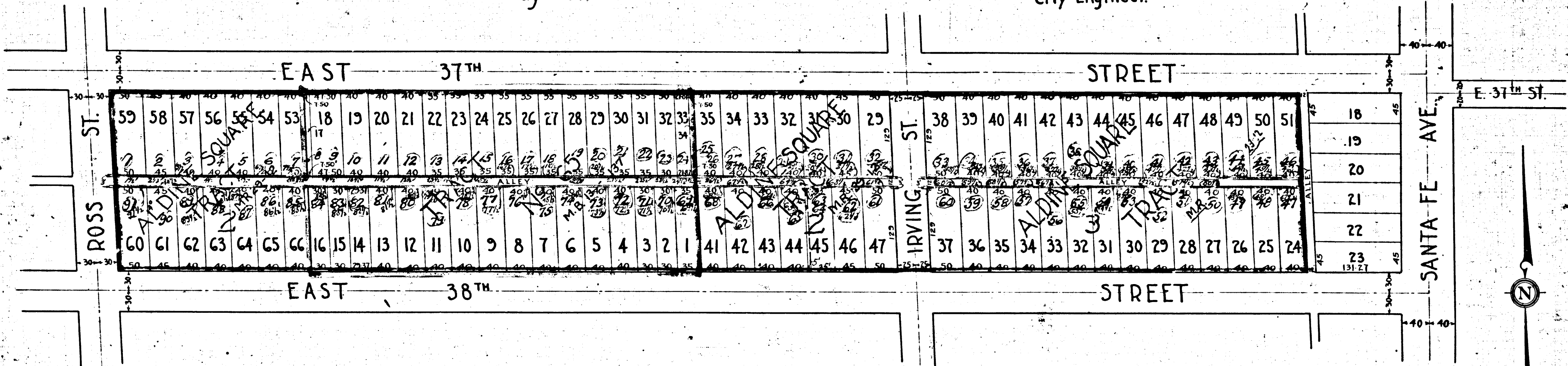
Exhibit "A"

PLAT
SHOWING LANDS TO BE TAKEN FOR AND DISTRICT TO BE ASSESSED TO PAY
THE EXPENSES OF OPENING AND WIDENING THAT CERTAIN UN-NAMED PUB-
LIC ALLEY IN THE CITY OF VERNON AS DESCRIBED IN, AND IN COMPLIANCE
WITH RESOLUTION OF INTENTION N° 186 OF THE BOARD OF TRUSTEES OF THE
CITY OF VERNON. ADOPTED DEC. 7, 1920.

Scale 1/4 inch = 100 Ft.
May 1921.

INDEX 7

Howard McCurdy,
City Engineer.



Each block, lot, portion of lot or parcel of land taken or assessed is designated and described by the number marked thereon in red ink.
Red tinting shows boundary of assessment district.
Orange tinting shows land condemned.
Other tintings show boundaries of subdivisions.

Delivered to the Street Superintendent
..... 1921

Recorded this..... day of..... 1921.

.....
City Engineer

.....
Street Superintendent.

Confirmed and adopted by the Board of
Trustees this..... day of..... 1921.

At the City of Vernon, California this..... day of..... 1921.

.....
City Clerk.

Vernon, California

.....
Street Superintendent.

Exhibit "A"

R.F. 1917