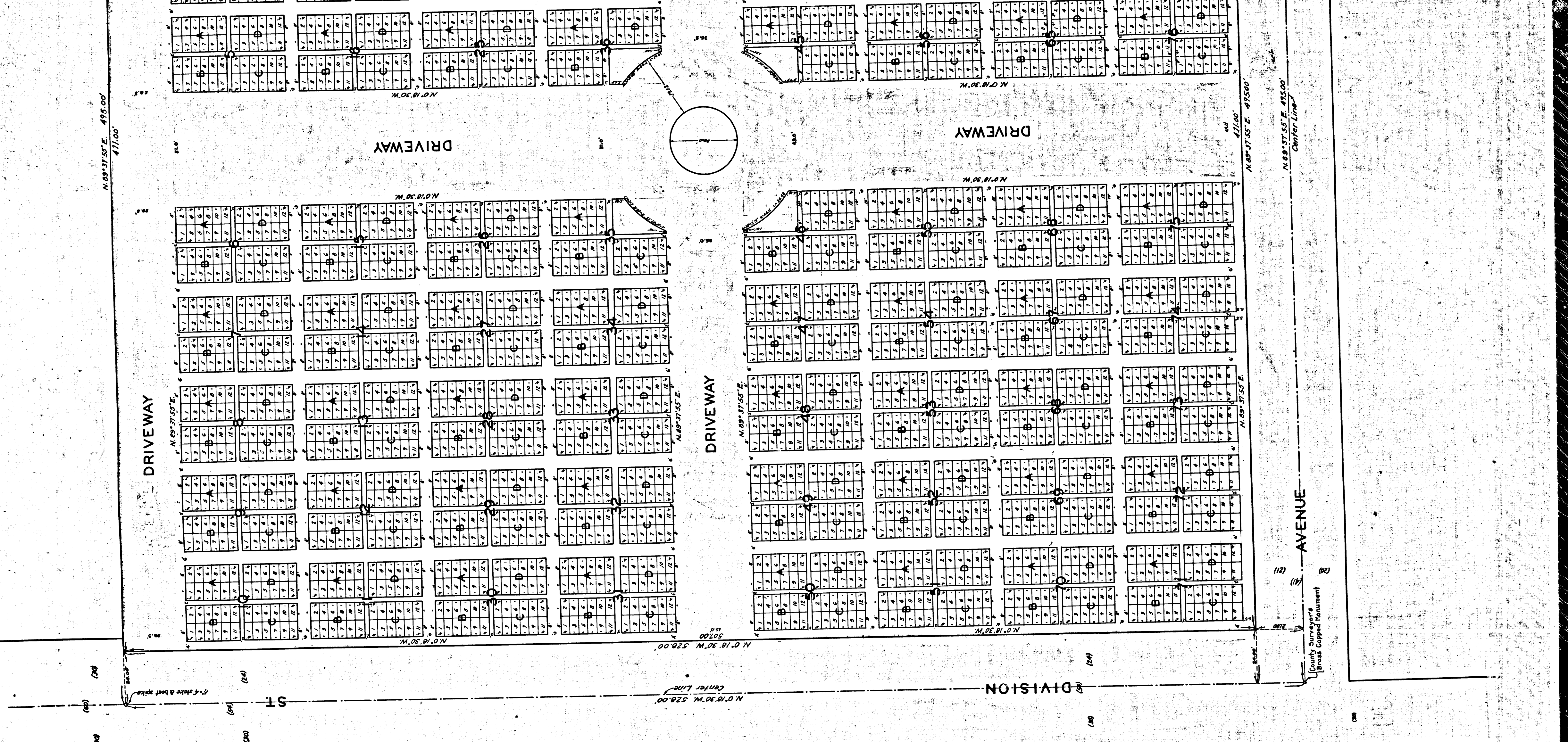
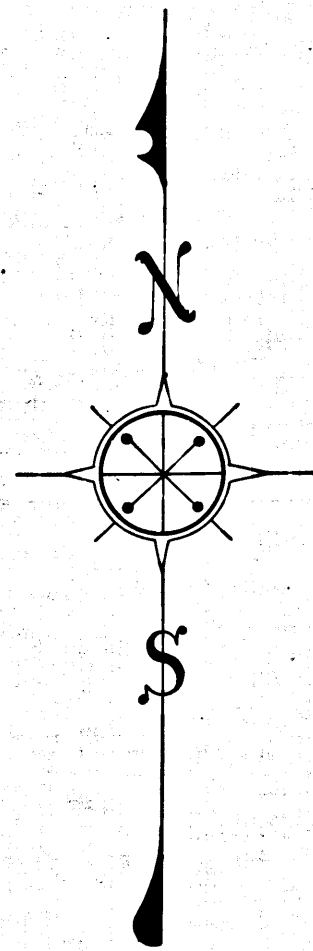


R.F. 927-R
A1 OF A3

11 TH. ST.





R.F. 927-R
 A3 OF A3

MAP OF
LANCASTER CEMETERY
 LOS ANGELES COUNTY
 BEING A REPLAT OF LANCASTER CEMETERY
 AS SHOWN ON RECORDERS FILED MAP NO 579 & 658 R

J.E. ROCKHOLD - COUNTY SURVEYOR.
 SURVEYED -- OCT.-DEC. - 1931.
 MAY - 1943
 SCALE - 1" = 20 FT.

NOTE:
 Blocks are numbered from 1 to 80.
 Lots are designated 'A', 'B', 'C', 'D' in each block. (Except those in Bks. 33, 41, 45, 46, 60 & 80 which are lettered as shown.)
 Single burial spaces are numbered from 1 to 12 in each lot. (Except those in Blk. 80 which are numbered as shown.)

Filed May 21st 1943

Note:
 Resolution dated May 11, 1943, copied in Minute Book 287, Page 40, contains "Rules & Regulations for the Government & Administration of Lancaster Cemetery" and is attached to and filed in the Recorder's Office with Recorder's Filed Map No. 927-R.

Neg. 572

1	2	3	4	5	6	7	8	9	10
11	12	13	14	15	16	17	18	19	20
21	22	23	24	25	26	27	28	29	30
31	32	33	34	35	36	37	38	39	40
41	42	43	44	45	46	47	48	49	50
51	52	53	54	55	56	57	58	59	60
61	62	63	64	65	66	67	68	69	70
71	72	73	74	75	76	77	78	79	80

INDEX 70.

MARGINAL MAP
 of
 BLOCK 80
 Scale - 1" = 10'