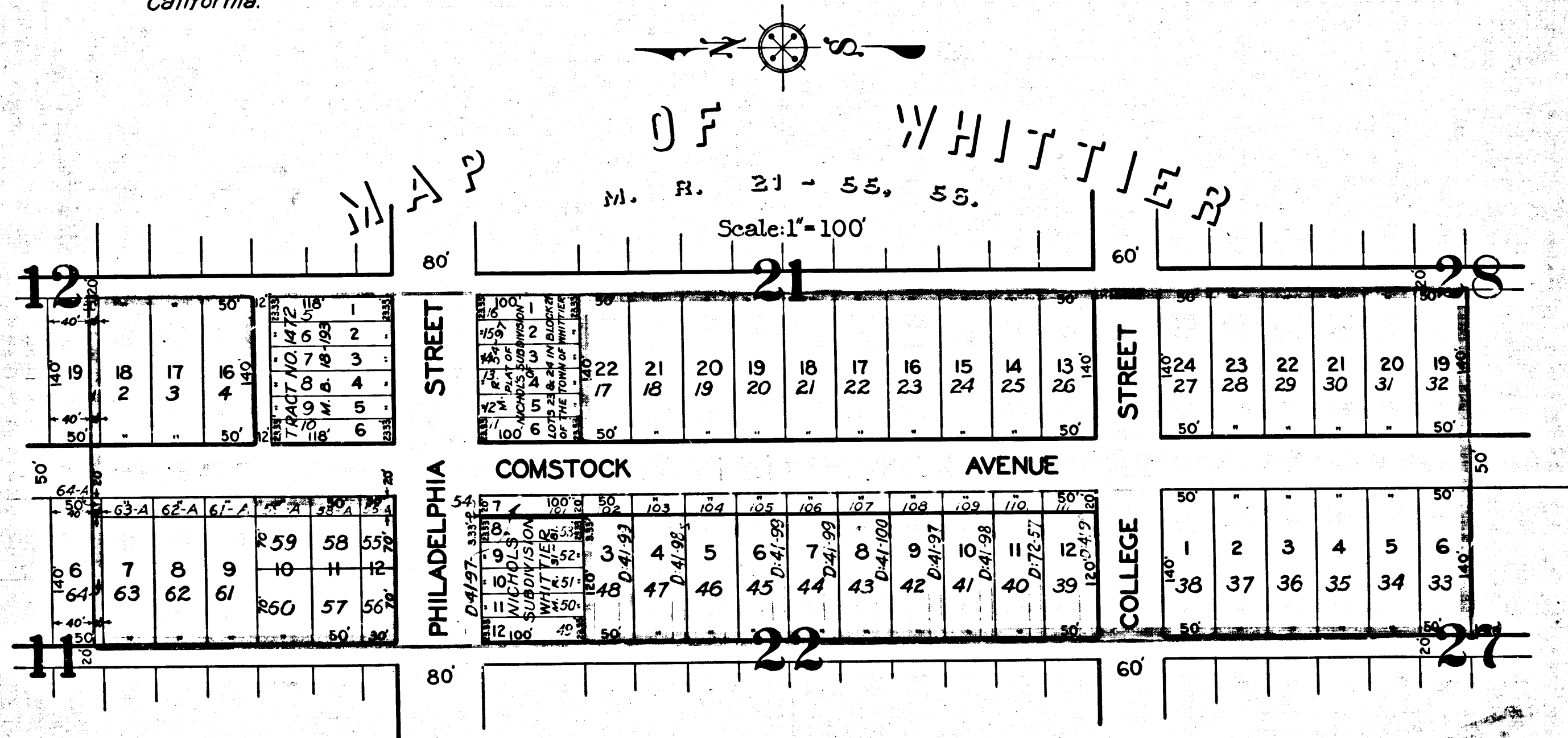


PLAT OF THE ASSESSMENT DISTRICT

Showing Lands to be taken and the Lands to be assessed for the widening of COMSTOCK AVENUE from the South Line of Philadelphia Street to the North Line of College Street in the City of Whittier, California, in accordance with Resolution of Intention of the Board of Trustees of said City, No. 861, adopted June 18th A.D. 1923, each district, block, lot or portion of lot and its dimensions, within the boundaries of the assessment district and the relative location of each of such districts, blocks, lots or portions of Lots to the improvement. Yellow tinting shows the lands to be taken for the widening of Comstock Avenue. Other tintings show the boundaries of those portions of the recorded subdivisions shown hereon. Exterior boundaries of assessment district are shown colored green. Figures in blue next to the property lines show, each, the length of said line in feet. Other figures in blue show number's of the lots. Each separate district, block, lot or portion of lot, within the boundaries of the assessment district, is numbered in red to correspond with the red assessment numbers in the report of the Commissioners. Brown lines and figures show property lines and dimensions in those cases where the actual holdings differ from the recorded subdivisions. Hereon, the mark ' means feet, M. R. means, Miscellaneous Records and M. B. means Map Book. All records referred to hereon are records of Los Angeles County, California.



Filed Mar 10, A.D. 1924.
Clarence O. Trueblood
 City Clerk.

Approved by the Board of Trustees Mar 10, A.D. 1924.

Clarence O. Trueblood
 City Clerk.

Confirmed and adopted by Board
 of Trustees April 14, A.D. 1924.
Clarence O. Trueblood
 City Clerk

001486-110
 072-210
 041-98 to 100

State of California
 County of Los Angeles } s.s.

I, Clarence O. Trueblood, City Clerk of the City of Whittier, do hereby certify the foregoing to be a full, true and correct copy of the Plat of the Assessment District for the widening of Comstock Avenue from the South line of Philadelphia Street to the north line of College Street as confirmed and adopted by the Board of Trustees of the City of Whittier, on the 14th day of April A.D. 1924.
 In witness whereof I have hereunto set my hand and affixed the Corporate Seal of said City at my office on this, the 15th day of April, A.D. 1924.

Clarence O. Trueblood
 City Clerk of the City of Whittier.



R.F. 11083

Index 37

Filed Apr. 18, 1924