

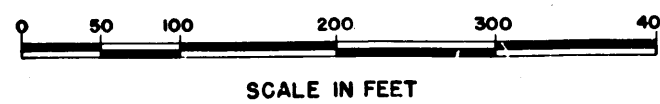
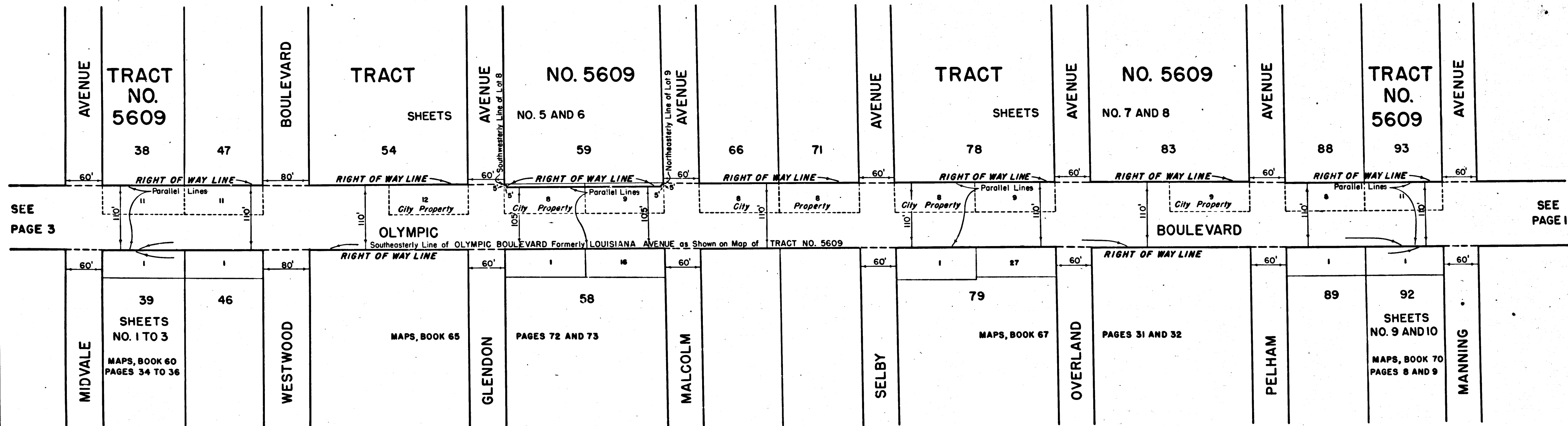
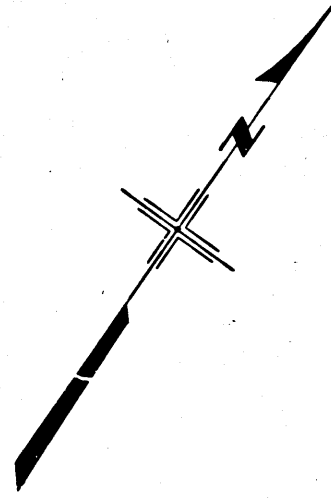
FILED  
 RECORDED  
 AT REQUEST OF *WORK Dept. of Public Works*  
 APR 5- 1945  
 1 P. 10 R. 7  
 IN BOOK  
 AT PAGE  
 OF MAP RECORDS State Highway Maps.  
 LOS ANGELES COUNTY, CALIF.  
 NAME R. BEATTY,  
 County Recorder  
*To be*  
 Deputy *Free*

DIST.	COUNTY	ROUTE	SEC.
VII	LA	173	LA

APPROVED Mar. 5, 1945  
*R. Beatty*  
 DISTRICT ENGINEER DIST. VII

THE OFFICIAL RIGHT OF WAY LINES OF STATE  
 HIGHWAY ROUTE VII-LA-173-LA AS SHOWN HEREON,  
 ARE HEREBY ESTABLISHED AND APPROVED THIS  
 12<sup>TH</sup> DAY OF March, 1945.

*R. Beatty*  
 STATE HIGHWAY ENGINEER



Title: OLYMPIC BLVD.-BEVERLY GLEN BLVD. TO  
 BUNDY DR. Right of Way No. 4474  
 Order No. 29952 Dist. Map 5482, 5483 Div. Index 1127, 1128  
 Clerk's File Council Dist. 3 Eng. Dist. W. Los Angeles  
 Plans & Profiles P-7938 Field Books 14105-15/25  
 Office Work by Wheeler, *Chadwell* Supervised by Tupper *W.B.T.*  
 Submitted Jan 12, 1945 Div. Dist. Eng. *R.B. Beatty*  
 Submitted Jan 15, 1945 Deputy Eng. *Donald Brown*  
 Approved Jan 15, 1945 City Engineer *R. Beatty*

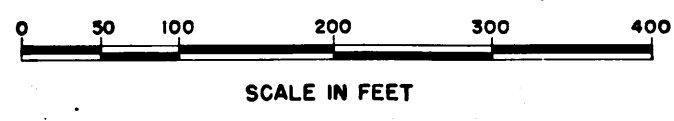
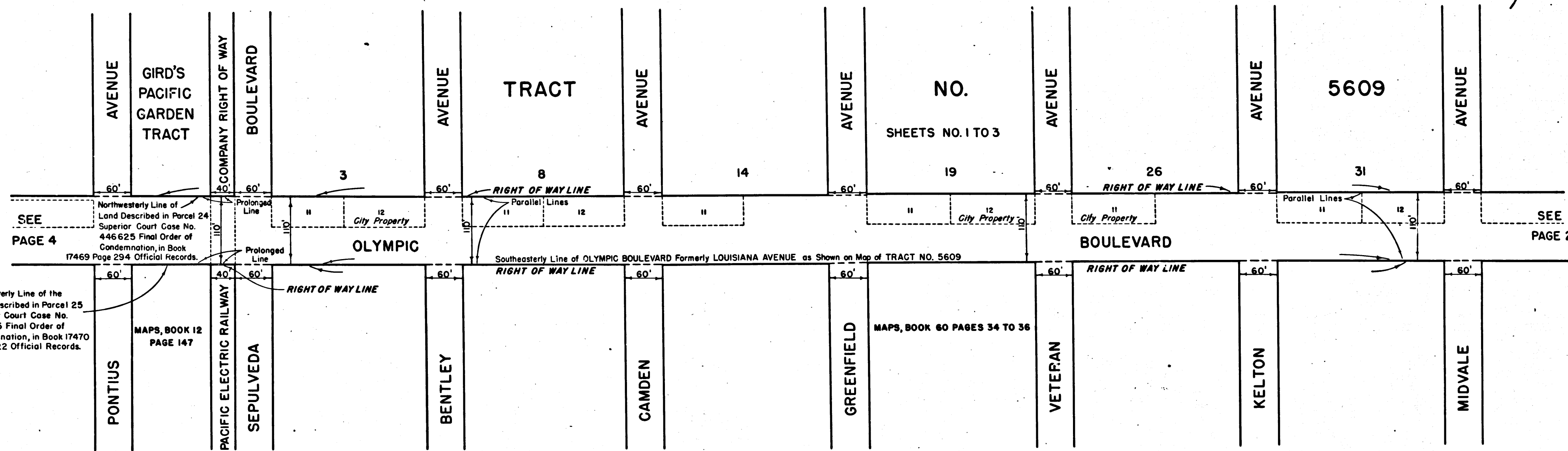
FILED  
 RECORDED  
 AT REQUEST OF *Wm. H. Wheeler, Dept. of Public Works.*  
 APR 5- 1945  
 1 MS. 10 P.M.  
 IN BOOK *3*  
 AT PAGE *3*  
 OF MAP RECORDS, State Highway Maps  
 LOS ANGELES COUNTY, CALIF.  
 MAME B. BEATTY,  
 County Registrar  
*W. W. Phelps*  
 Deputy

DIST.	COUNTY	ROUTE	SEC.
VII	LA	173	LA

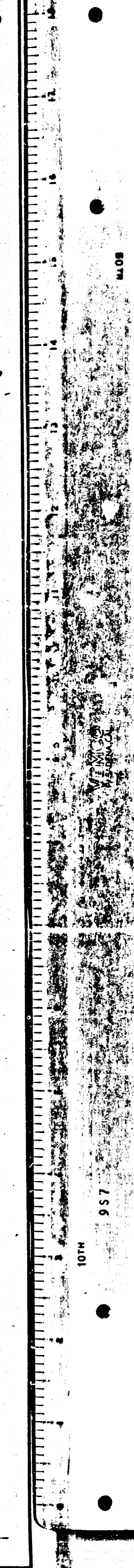
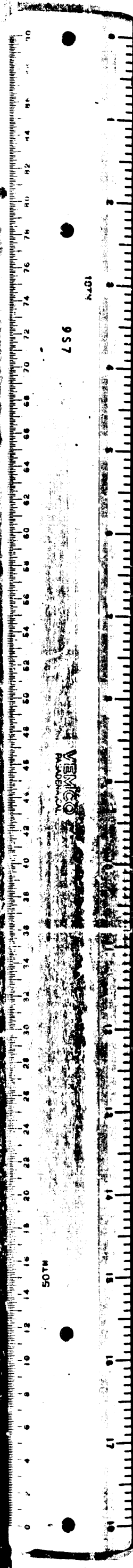
APPROVED Mar. 5, 1945  
*D. J. Connelley*  
 DISTRICT ENGINEER, DIST. VII

THE OFFICIAL RIGHT OF WAY LINES OF STATE  
 HIGHWAY ROUTE VII-LA-173-LA AS SHOWN HEREON,  
 ARE HEREBY ESTABLISHED AND APPROVED THIS  
 12<sup>TH</sup> DAY OF March 1945.

*G. W. Mendenhall*  
 STATE HIGHWAY ENGINEER



Title: OLYMPIC BLVD. - BEVERLY GLEN BLVD. TO BUNDDY DR. Right of Way No. 4474  
 Order No. 29952 Dist. Map 5483, 7199 Div. Index 1127, 1236  
 Clerk's File          Council Dist. 3 Eng. Dist. W. Los Angeles  
 Plans & Profiles P-7938 Field Books 14105-15/25  
 Office Work by Wheeler, *Chd. Wheeler*; Supervised by Tupper, *M.B.T.*  
 Submitted Jan 12 1945 Div. Eng. *P.B. Wheeler*  
 Submitted Jan 15 1945 Deputy Eng. *Wm. H. Wheeler*  
 Approved Jan 15 1945 City Engineer *Wm. H. Wheeler*



FILED

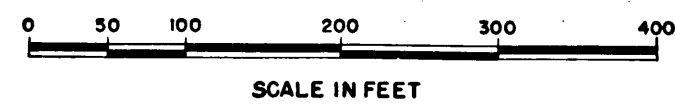
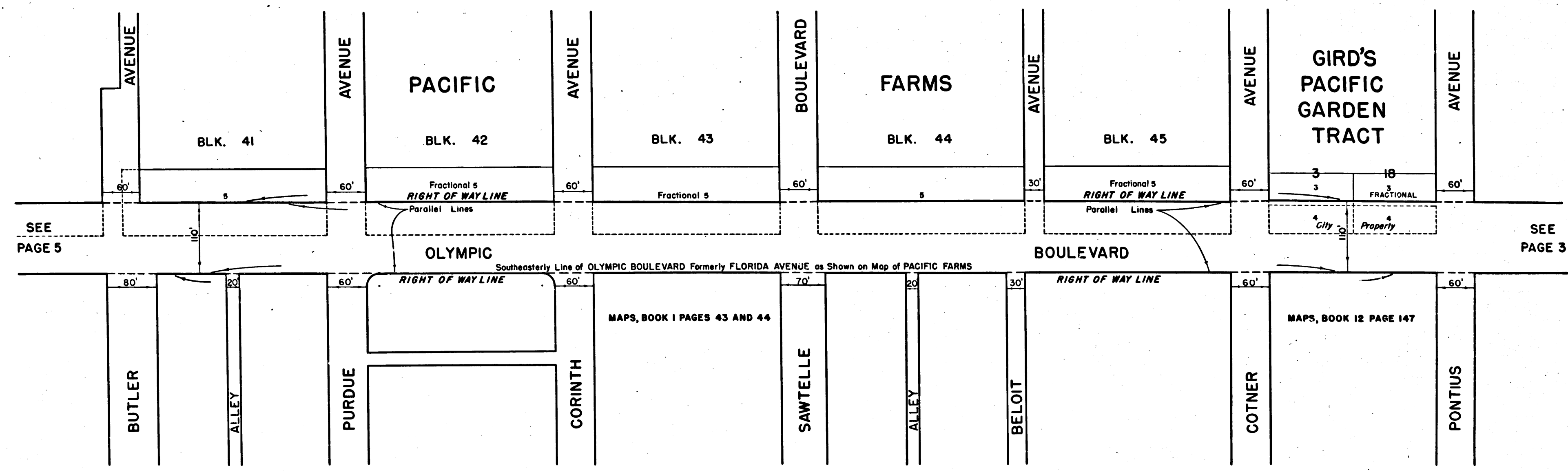
RECORDED  
AT REQUEST OF *Dept. of Public Wks.*  
APR 5- 1945  
1 1/2" x 10" R.M.  
IN BOOK 4  
AT PAGE 4  
OF MAP RECORDS State Highway Maps  
LOS ANGELES COUNTY, CALIF.  
MAMER B. BEATTY,  
County Registrar  
By *T. W. Plumb*  
Deputy

DIST.	COUNTY	ROUTE	SEC.
VII	LA	173	LA

APPROVED Mar. 5, 1945  
*J. W. Costello*  
DISTRICT ENGINEER, DIST. VII

THE OFFICIAL RIGHT OF WAY LINES OF STATE  
HIGHWAY ROUTE VII-LA-173-LA AS SHOWN HEREON,  
ARE HEREBY ESTABLISHED AND APPROVED THIS  
12<sup>TH</sup> DAY OF March, 1945.

*J. W. Costello*  
STATE HIGHWAY ENGINEER



Title: OLYMPIC BLVD.- BEVERLY GLEN BLVD. TO BUNDY DR.			
Order No. 29952	Dist. Map 7199	Right of Way No. 4474	Div. Index 1236
Clark's File	Council Dist. 3	Eng. Dist. West L.A.	
Plans & Profiles P-8026	Field Books 12317-44750		
Office Work by Wheeler, Cid/Mellor, Supervised by TUPPLE, W.B.T.			
Submitted Jan 12 1945	Div. Dist. Engr. P.O. Litch		
Submitted Jan 15 1945	Deputy Engr. Powell Patton		
Approved Jan 15 1945	City Engineer		



1125 STATE HIGHWAY MAP BOOK NO. I PAGE 5  
LOS ANGELES COUNTY

FILED  
RECORDED  
AT REQUEST OF *OWNER Dept. of Public Wks.*  
APR 5- 1945  
1:30 P.M.

DIST.	COUNTY	ROUTE	SEC.
VII	LA	173	LA

IN BOOK 5  
AT PAGE 5  
OF MAPS, BOOKS State Highway Maps, APPROVED Mar. 5, 1945  
LOS ANGELES COUNTY, CALIF.

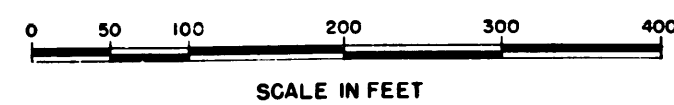
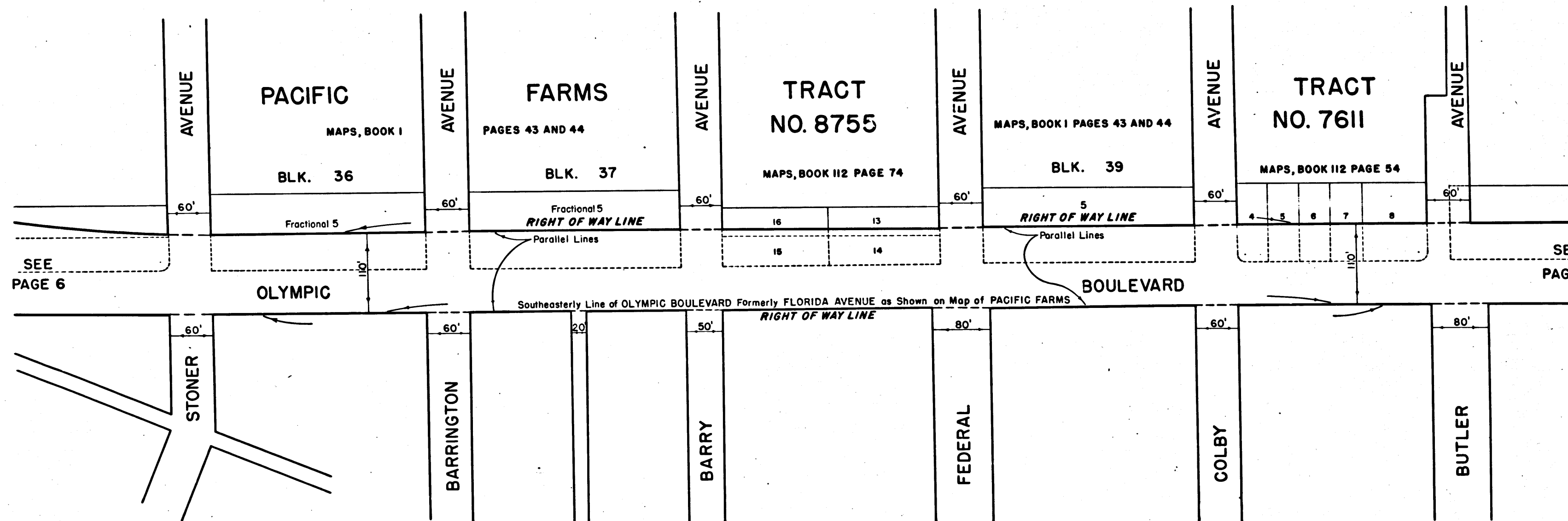
MAME B. BEATTY,  
County Register

*T. W. P. [Signature]*  
Deputy

*[Signature]*  
DISTRICT ENGINEER, DIST. VII

THE OFFICIAL RIGHT OF WAY LINES OF STATE  
HIGHWAY ROUTE VII-LA-173-LA AS SHOWN HEREON  
ARE HEREBY ESTABLISHED AND APPROVED THIS  
12<sup>TH</sup> DAY OF March 1945

*[Signature]*  
STATE HIGHWAY ENGINEER



Title: OLYMPIC BLVD. - BEVERLY GLEN BLVD. TO BUNDY DR.		Right of Way No. 4474	
Order No. 29952	Dist. Map 7199, 5467	Div. Index 1236, 1241	
Clerk's File	Council Dist. 3	Eng. Dist. W. Los Angeles	
Plans & Profiles P-8026	Field Books 12317-44/50		
Office Work by Wheeler	Chapelle	Supervised by Tupper	W.B.F.
Submitted Jan. 12 <sup>th</sup> 1945	Div. Dist. Engr.		
Submitted Jan. 15 1945	Deputy Engr.		
Approved Jan. 15 1945	City Engineer		

FILED  
RECORDED  
AT REQUEST OF *W. L. Beatty*, Dept. of Public Works.  
APR 5 - 1945  
11:38:10 A.M.  
IN BOOK  
AT PAGE  
OF MAP RECORDS, State Highway Maps  
LOS ANGELES COUNTY, CALIF.  
MAME B. BEATTY,  
County Recorder  
By *W. L. Beatty*  
Deputy

DIST.	COUNTY	ROUTE	SEC.
VII	LA	173	LA

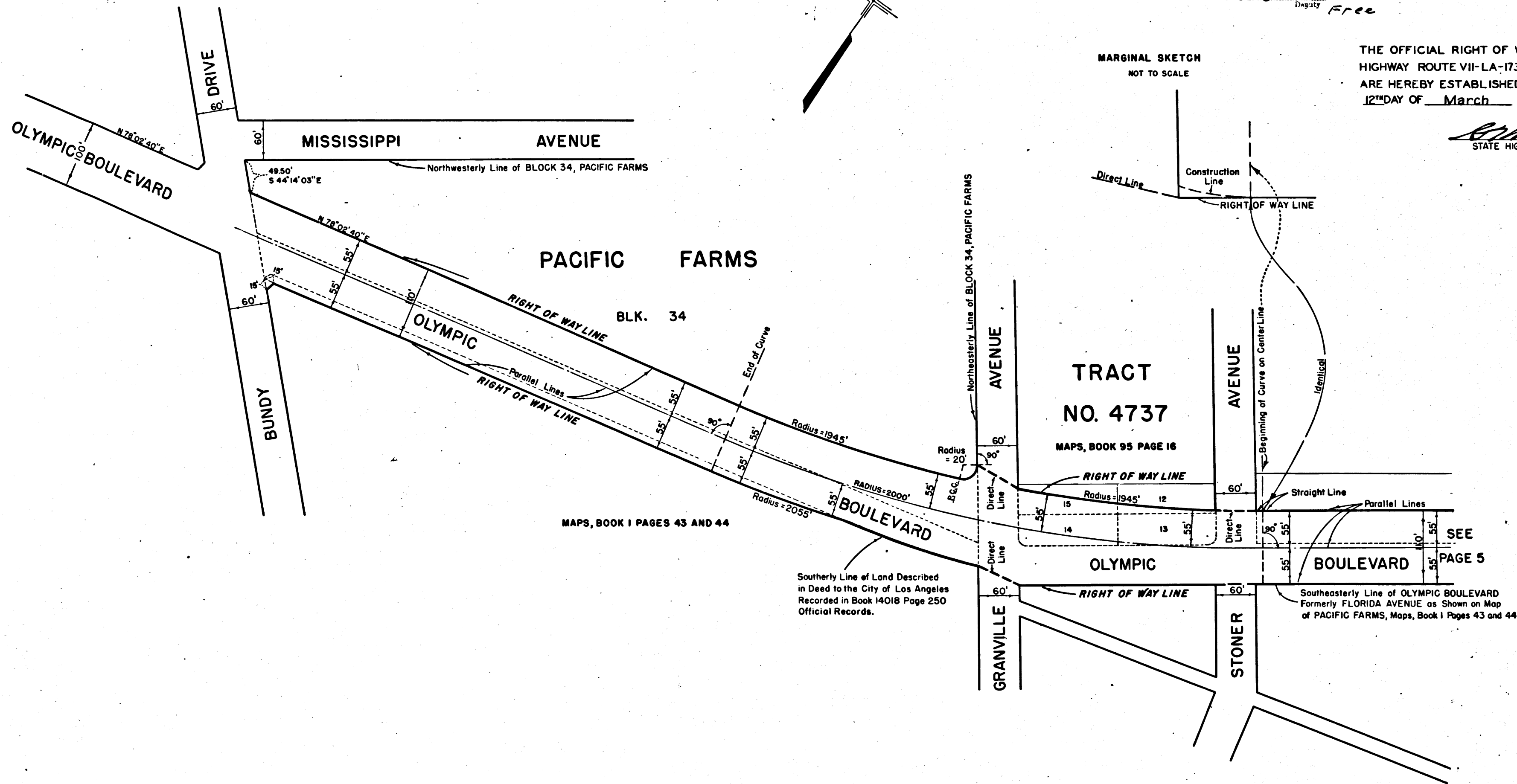
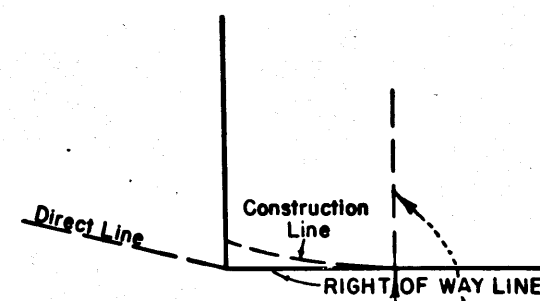
APPROVED Mar. 5, 1945

*W. L. Beatty*  
DISTRICT ENGINEER, DIST. VII

THE OFFICIAL RIGHT OF WAY LINES OF STATE  
HIGHWAY ROUTE VII-LA-173-LA AS SHOWN HEREON  
ARE HEREBY ESTABLISHED AND APPROVED THIS  
12<sup>TH</sup> DAY OF March 1945

*W. L. Beatty*  
STATE HIGHWAY ENGINEER

MARGINAL SKETCH  
NOT TO SCALE



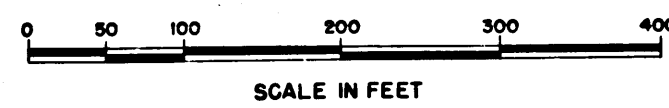
MAPS, BOOK 1 PAGES 43 AND 44

MAPS, BOOK 95 PAGE 16

SEE  
PAGE 5

Southerly Line of Land Described  
in Deed to the City of Los Angeles  
Recorded in Book 14018 Page 250  
Official Records.

Southeasterly Line of OLYMPIC BOULEVARD  
Formerly FLORIDA AVENUE as Shown on Map  
of PACIFIC FARMS, Maps, Book 1 Pages 43 and 44



Title OLYMPIC BLVD.-BEVERLY GLEN BLVD. TO BUNDY DR.			
Order No. 29952	Dist. Map 5467	Right of Way No. 4474	Div. Index 1241
Plan's File	Council Dist. 3	Eng. Dist. W. Los Angeles	
Plans & Profile P-8026	Field Books 12317-44/50		
Office Work by Wheeler, Ckd. <i>Wheeler</i>	Supervised by Tupper	<i>M.B.V.</i>	
Submitted Jan 12 1945	Dist. Engr. <i>R.B. [Signature]</i>		
Submitted Jan 15 1945	Deputy Engr. <i>Max [Signature]</i>		
Approved Jan 15 1945	City Engineer <i>Shay [Signature]</i>		