

Pk 1-1939-40 Fee 9110

DIST.	COUNTY	ROUTE	POST MILES.	SHEET No.	TOTAL SHEETS
7	LA	1	51.1	1	2

STATE OF CALIFORNIA
HIGHWAY TRANSPORTATION AGENCY
DEPARTMENT OF PUBLIC WORKS
DIVISION OF HIGHWAYS

A. J. Hill
DEPUTY DISTRICT ENGINEER
April 9, 1965

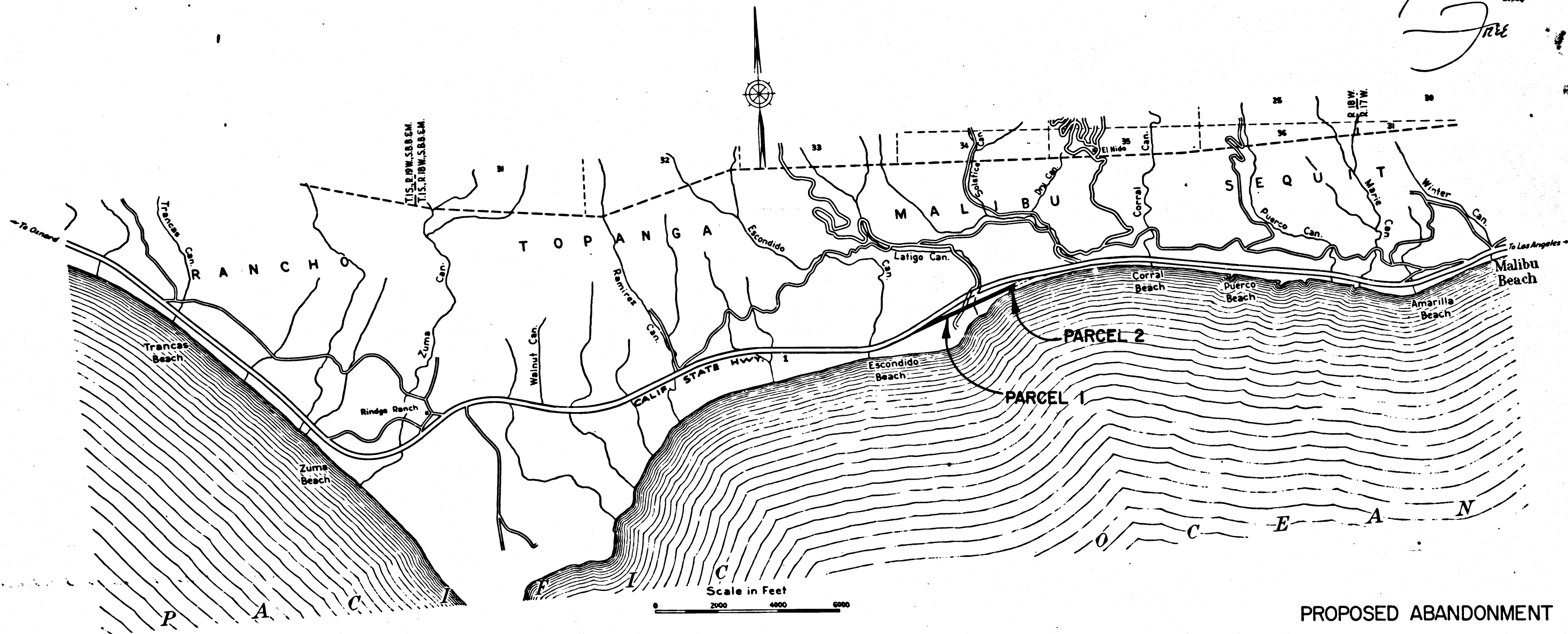
RIGHT OF WAY MAPS OF
STATE HIGHWAY

In Los Angeles County, at Latigo Canyon

3253

RECORDED
AT REQUEST OF OWNER DIV. OF HIGHWAYS
APRIL 15, 1965
10 AM. PART 9 A.M.

IN BOOK 1
AT PAGE 39
OF MAPS SHOWING STATE HIGHWAY MAPS
LOS ANGELES COUNTY, CALIF.
RAY E. LEE
COUNTY RECORDER
Ray E. Lee
Deputy



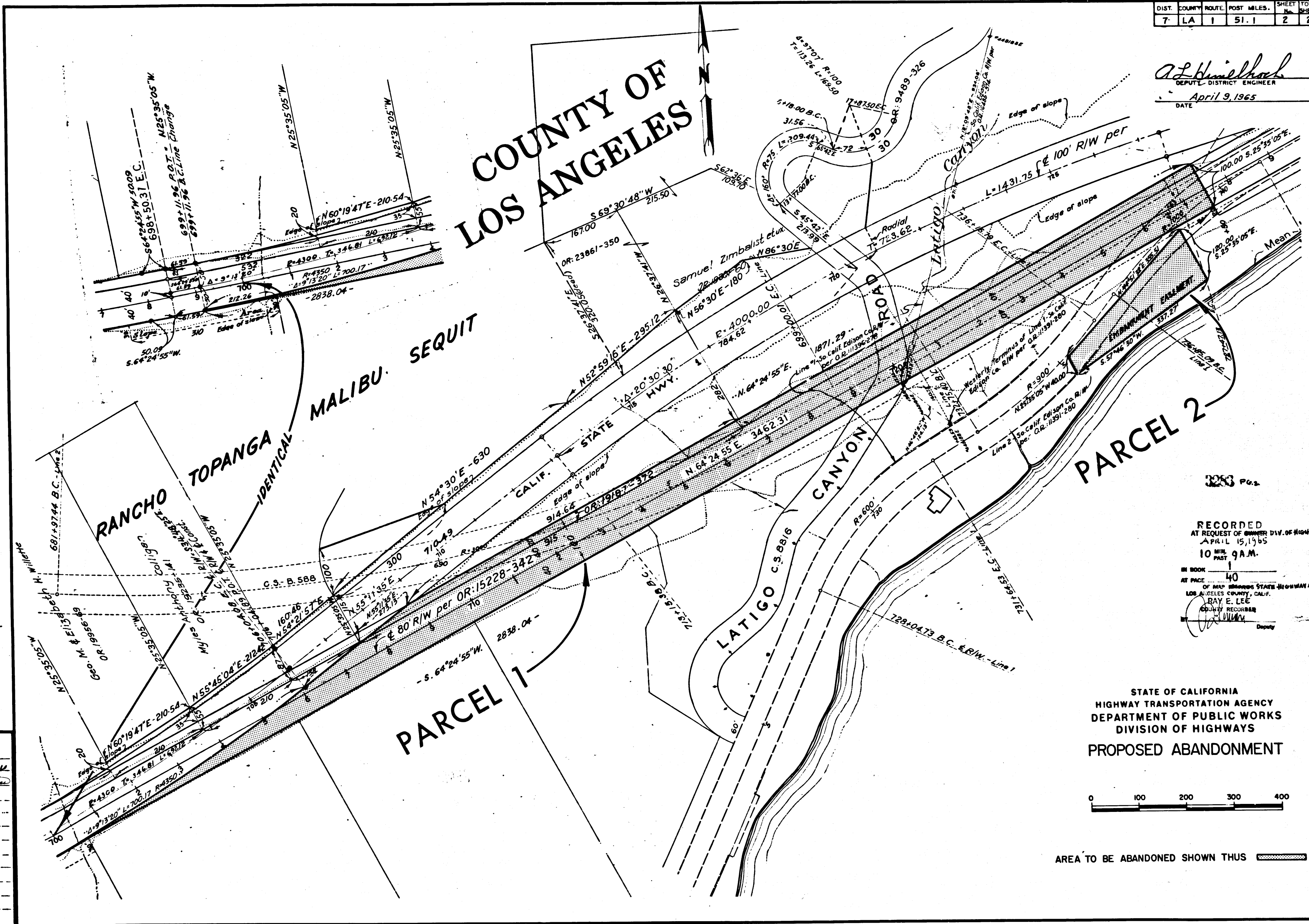
PROPOSED ABANDONMENT

Abd. 63
DRN BY *AK*
CLC BY *AK*
CRD BY *AK*
BASE MAP NOS...
Pr 318-2
LA-50-A
REF. MAP NOS...
AS BUILT NOS...

DIST.	COUNTY	ROUTE	POST MILES	SHEET No.	TOTAL SHEETS
7	LA	1	51.1	2	2

A.L. Hinkel
 DEPUTY DISTRICT ENGINEER
 April 9, 1965
 DATE

COUNTY OF LOS ANGELES



RANCHO TOPANGA MALIBU SEQUIT
 IDENTICAL

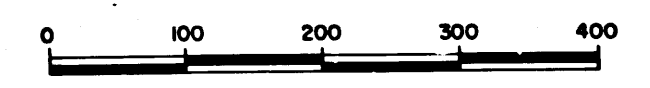
PARCEL 1

PARCEL 2

328 Pgs.

RECORDED
 AT REQUEST OF OWNER DIV. OF HIGHWAYS
 APRIL 15, 1965
 10 MIN. PAST 9 A.M.
 IN BOOK 1
 AT PAGE 40
 OF MAP SHOWING STATE HIGHWAY MAPS
 LOS ANGELES COUNTY, CALIF.
 RAY E. LEE
 COUNTY RECORDER

STATE OF CALIFORNIA
 HIGHWAY TRANSPORTATION AGENCY
 DEPARTMENT OF PUBLIC WORKS
 DIVISION OF HIGHWAYS
 PROPOSED ABANDONMENT



AREA TO BE ABANDONED SHOWN THUS

Abd. 63
 DRN BY *A.L. Hinkel*
 C.L.C. BY *A.L. Hinkel*
 CKD BY *A.L. Hinkel*
 BASE MAP NO'S
 P2 318-2
 LA 60-A
 REF. MAP NO'S
 AS BUILT NO'S