

Bk 1 p 41-43
Free 8:59am

BOOK 1 PAGE 41

DIST.	COUNTY	ROUTE	POST MILES	SHEET NO.	TOTAL SHEETS
7	LA	605	23/3.4	1	3

STATE OF CALIFORNIA
 HIGHWAY TRANSPORTATION AGENCY
 DEPARTMENT OF PUBLIC WORKS
 DIVISION OF HIGHWAYS
 RIGHT OF WAY MAPS OF
STATE HIGHWAY

3065

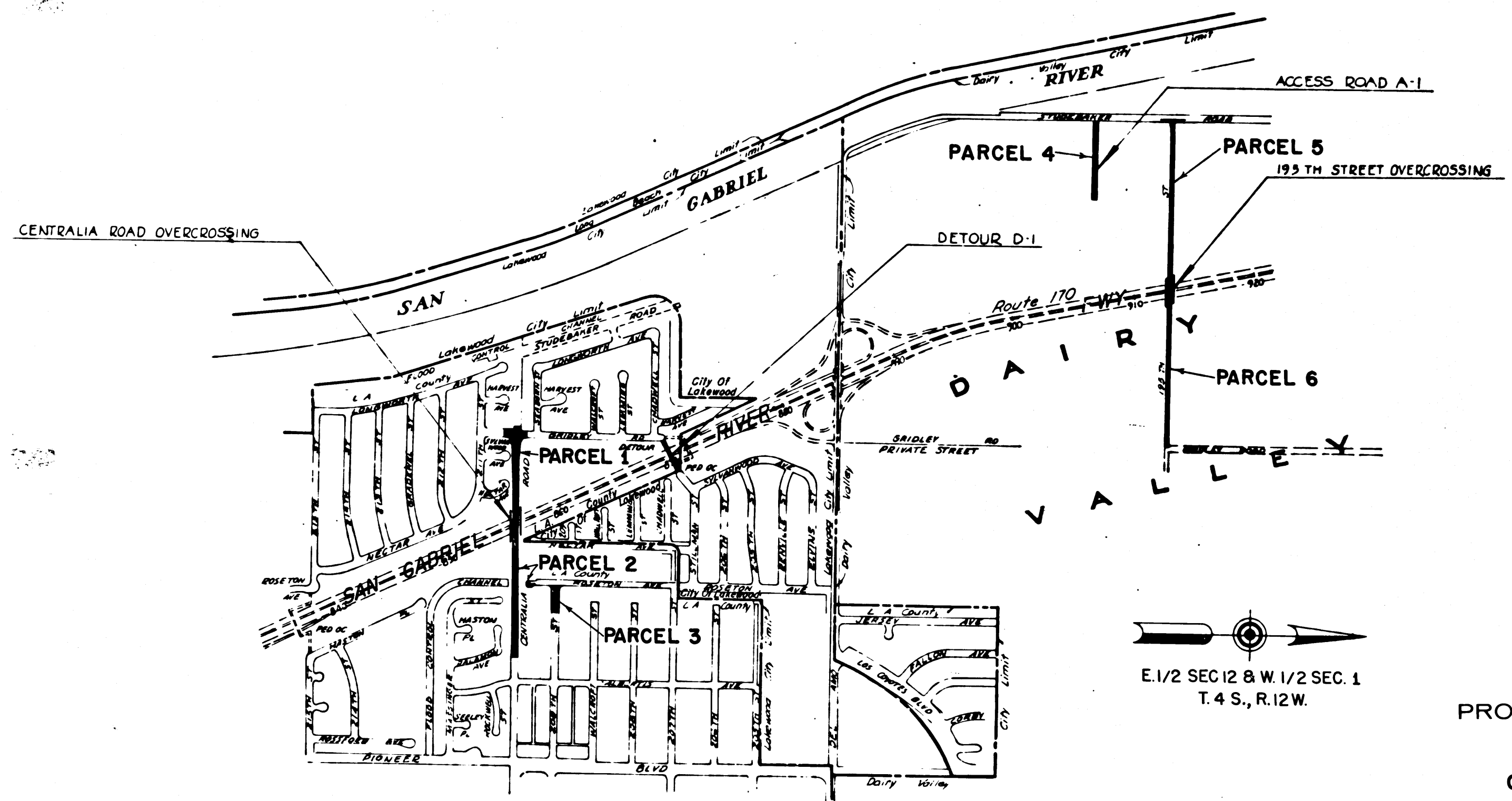
RECORDED
 AT REQUEST OF OWNER DIV. OF HIGHWAYS
 APR. 29, 1965
 59 MIN. PAST 8 A.M.

IN BOOK 1
 AT PAGE 41
 OF REDESIGNING STATE HIGHWAY MAPS
 LOS ANGELES COUNTY, CALIF.
 RAY F. LEE
 COUNTY RECORDER
 BY: [Signature] Deputy

[Signature]
 DEPUTY DISTRICT ENGINEER
 DATE APRIL 21, 1965

Free

In Los Angeles County in and near Dairy Valley at Centralia Road and at 195th Street



North arrow symbol

E. 1/2 SEC 12 & W. 1/2 SEC. 1
 T. 4 S., R. 12 W.

PROPOSED RELINQUISHMENT
 TO THE
 COUNTY OF LOS ANGELES
 CITY OF DAIRY VALLEY

SCALE 1" = 600'

0 100 200

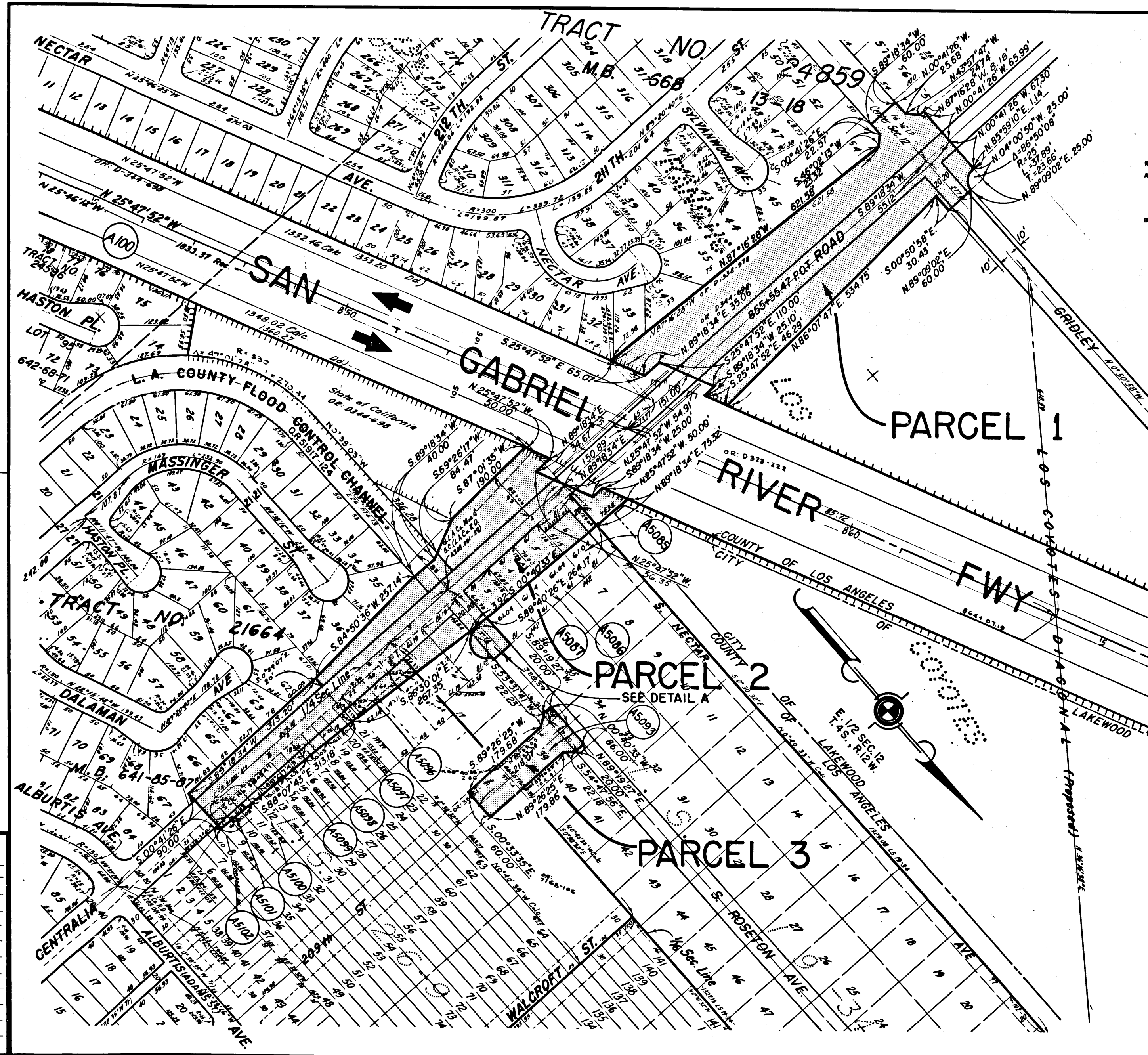
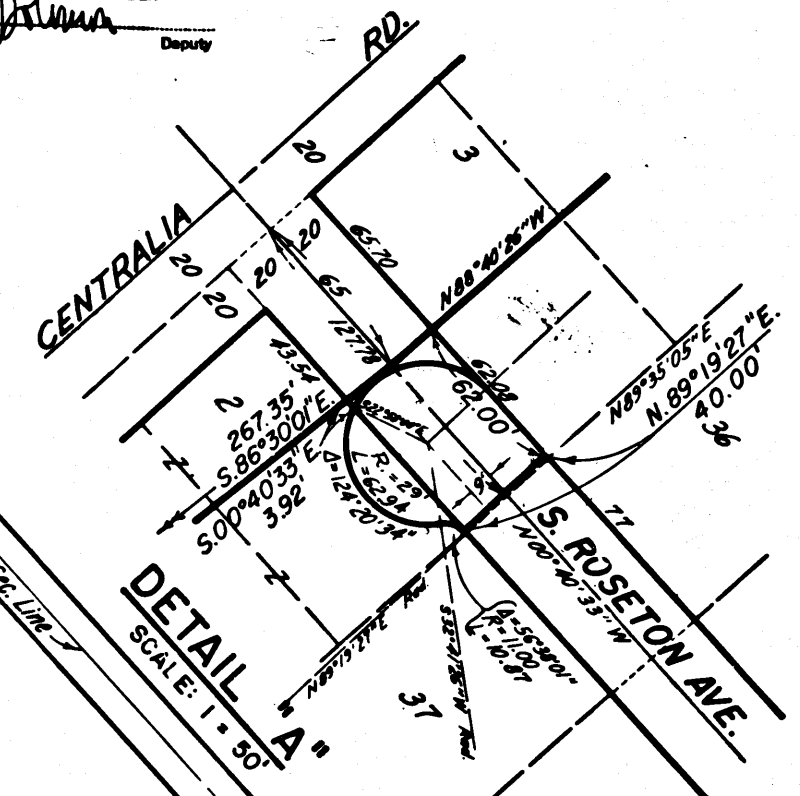
381
 REL- 405
 DRN BY W.F.S.
 C.L.C. BY J.W.H.
 CK'D BY H.S.
 BASE MAP NO'S
 REF. MAP NO'S
 E-1956, F-1957
 AS BUILT NO'S
 158-2

DIST	COUNTY	ROUTE	POST. MILES.	SHEET No.	TOTAL SHEETS
7	LA.	605	2.3/3.4	2	3

3065 pg. 2

RECORDED
AT REQUEST OF COUNTY DIV. OF HIGHWAYS
APR. 29, 1965
DATE

59 MIN. PART 8A.M.
IN BOOK 1
AT PAGE 42
OF PROPOSED STATE HIGHWAY MAPS
LOS ANGELES COUNTY, CALIF.
RAY E. LEE
COUNTY RECORDER
BY [Signature] Deputy

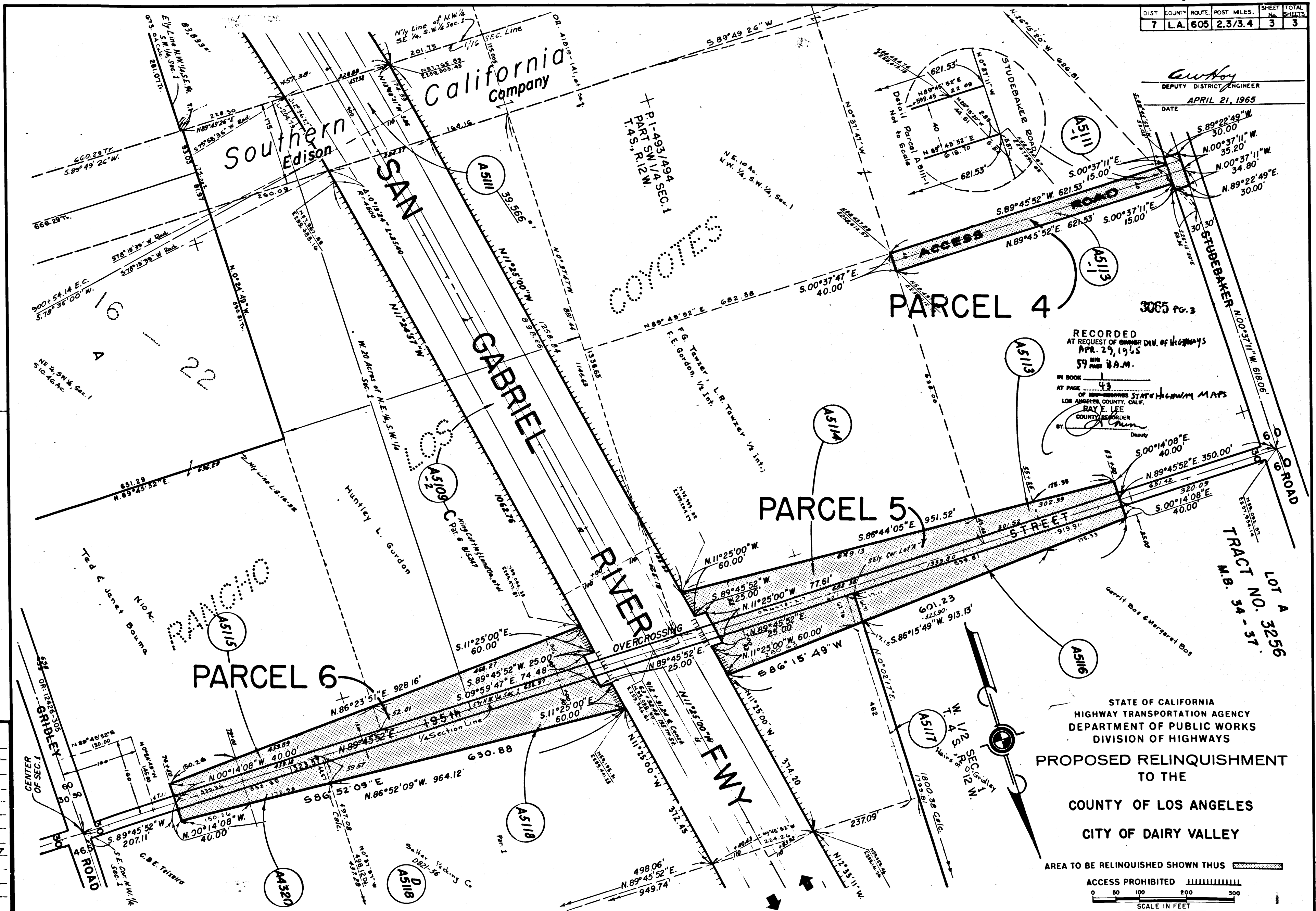


REL- 381
405
DWN BY W.F.S.
C/LC BY J.W.H.
CKD BY H.E.L.
BASE MAP NO'S
REF. MAP NO'S
F-1956, F-1957
AS BUILT NO'S
158. 2

STATE OF CALIFORNIA
HIGHWAY TRANSPORTATION AGENCY
DEPARTMENT OF PUBLIC WORKS
DIVISION OF HIGHWAYS
PROPOSED RELINQUISHMENT
TO THE
COUNTY OF LOS ANGELES
CITY OF DAIRY VALLEY
AREA TO BE RELINQUISHED SHOWN THUS [Hatched Pattern]
ACCESS PROHIBITED [Hatched Pattern]
0 50 100 200 300
SCALE IN FEET

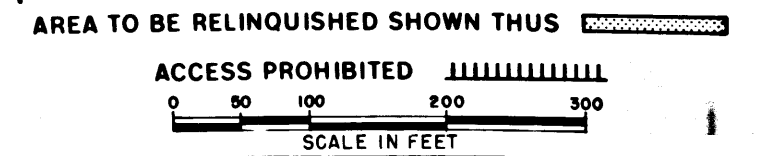
DIST.	COUNTY	ROUTE	POST MILES.	SHEET NO.	TOTAL SHEETS
7	L.A.	605	2.3/3.4	3	3

C. W. Hoy
 DEPUTY DISTRICT ENGINEER
 DATE APRIL 21, 1965



RECORDED
 AT REQUEST OF ENGINEER DIV. OF HIGHWAYS
 APR. 29, 1965
 59 AM
 8 A.M.
 IN BOOK 1
 AT PAGE 43
 OF THE STATE HIGHWAY MAPS
 LOS ANGELES COUNTY, CALIF.
 RAY E. LEE
 COUNTY RECORDER
 Deputy

STATE OF CALIFORNIA
 HIGHWAY TRANSPORTATION AGENCY
 DEPARTMENT OF PUBLIC WORKS
 DIVISION OF HIGHWAYS
 PROPOSED RELINQUISHMENT
 TO THE
 COUNTY OF LOS ANGELES
 CITY OF DAIRY VALLEY



381
 REL-405
 DRN BY W.F.S.
 C/LC BY J.W.H.
 CKD BY H.S.L.
 BASE MAP NO'S...
 REF. MAP NO'S...
 F-1956, F-1957
 AS BUILT NO'S...
 158-2