

Bk 1 Pa 44-45 Free 9:33

BOOK 1		PAGE 44			
DIST.	COUNTY	ROUTE	POST MILES.	SHEET No.	TOTAL SHEETS
7	LA	134	7.1/7.4	1	2

STATE OF CALIFORNIA
 HIGHWAY TRANSPORTATION AGENCY
 DEPARTMENT OF PUBLIC WORKS
 DIVISION OF HIGHWAYS

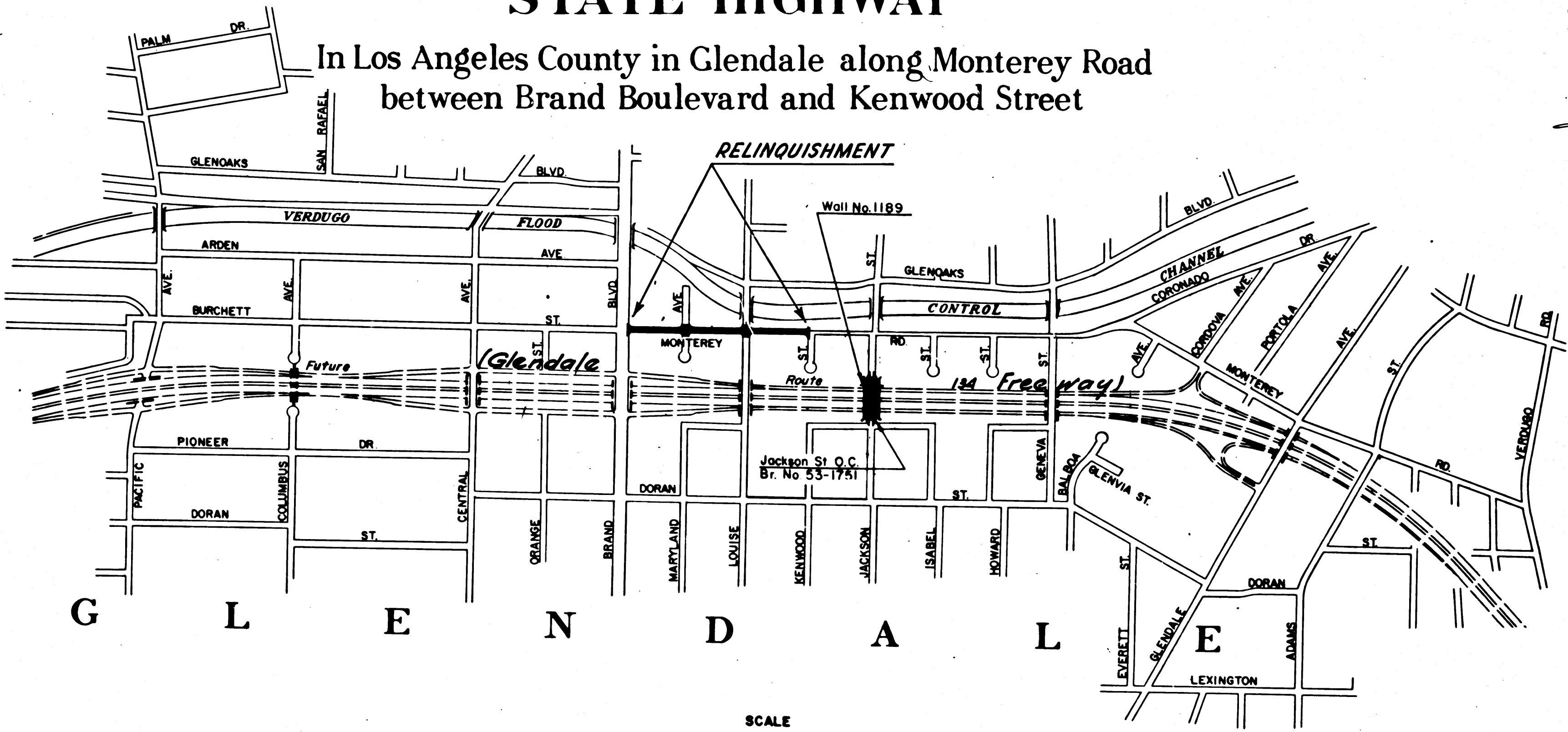
Anthony
 DEPUTY DISTRICT ENGINEER
 May 2, 1965
 DATE

3002

RECORDED
 AT REQUEST OF DIV. OF HIGHWAYS
 MAY 6, 1965
 33 PM 9 A.M.
 IN BOOK 1
 AT PAGE 44
 OF STATE HIGHWAY MAPS
 LOS ANGELES COUNTY, CALIF.
 RAY E. LEE
 COUNTY RECORDER
 BY *[Signature]* Deputy

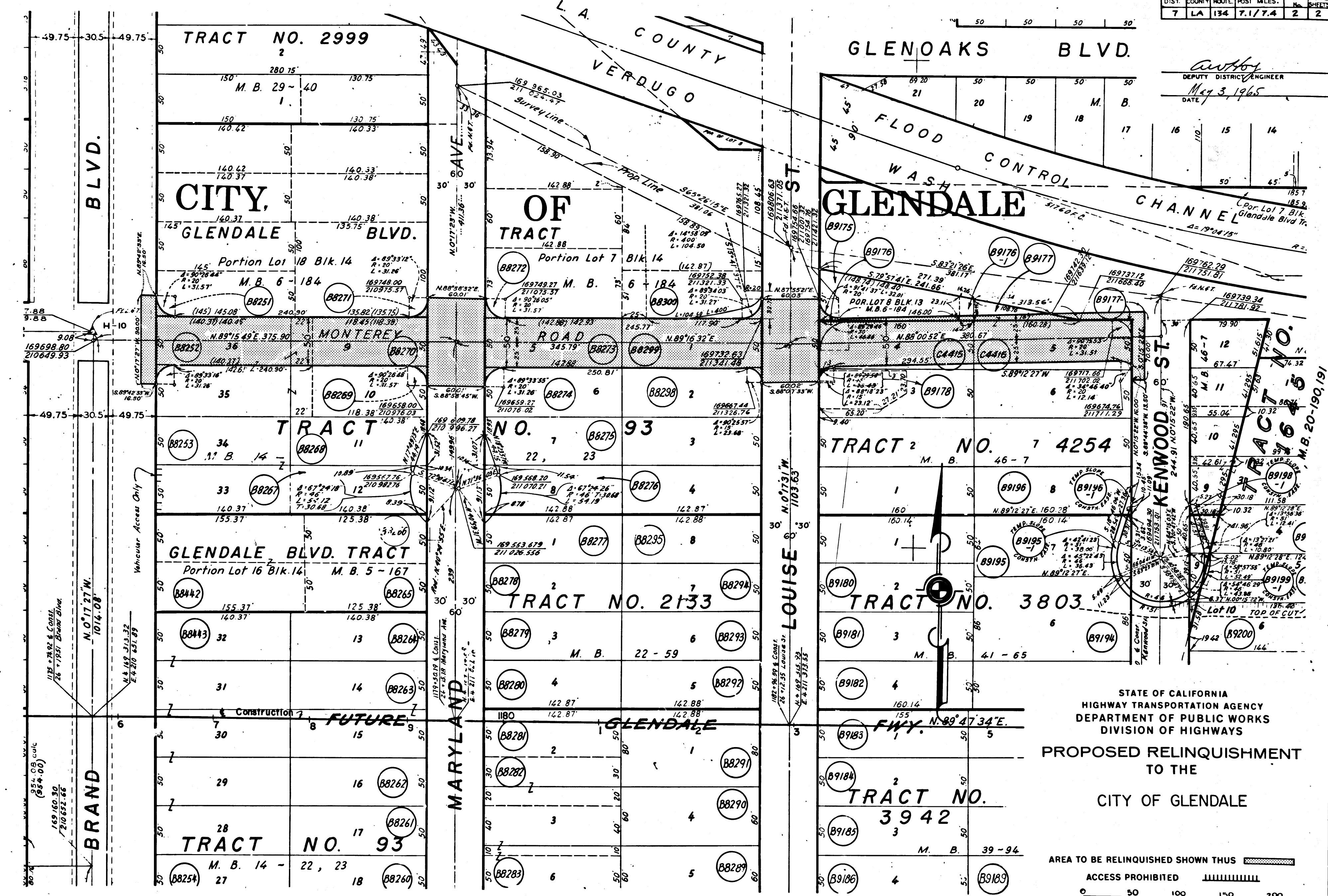
RIGHT OF WAY MAPS OF
STATE HIGHWAY

In Los Angeles County in Glendale along Monterey Road
 between Brand Boulevard and Kenwood Street



PROPOSED RELINQUISHMENT
 TO THE
 CITY OF GLENDALE

REL-372
 DRN BY P.F.
 C'LC BY E.W.K.
 CK'D BY T.K.
 BASE MAP NO'S
 F-1163
 REF. MAP NO'S
 AS BUILT NO'S
 164-13



auth
 DEPUTY DISTRICT ENGINEER
 DATE May 3, 1965

3002 PG. 2

DIV. OF HIGHWAYS
 RECORDED
 AT REQUEST OF
 MAY 6, 1965
 3:30 P.M.
 RAY E. LEE
 COUNTY RECORDER

REL-372
 DRN BY P.F.
 C.L.C. BY E.M.W.
 CKD BY T.K.
 BASE MAP NO'S
 F-1163
 REF. MAP NO'S
 AS BUILT NO'S
 1-4-13

STATE OF CALIFORNIA
 HIGHWAY TRANSPORTATION AGENCY
 DEPARTMENT OF PUBLIC WORKS
 DIVISION OF HIGHWAYS
 PROPOSED RELINQUISHMENT
 TO THE
 CITY OF GLENDALE

