

DIST.	COUNTY	ROUTE	POST MILES	SHEET No.	TOTAL SHEETS
7	LA	405	5.6-7.7	1	9

STATE OF CALIFORNIA
HIGHWAY TRANSPORTATION AGENCY
DEPARTMENT OF PUBLIC WORKS
DIVISION OF HIGHWAYS

4033

RECORDED
AT REQUEST OF CHIEF, DIV. OF HIGHWAYS
MAY 14, 1965
20 9 A.M.

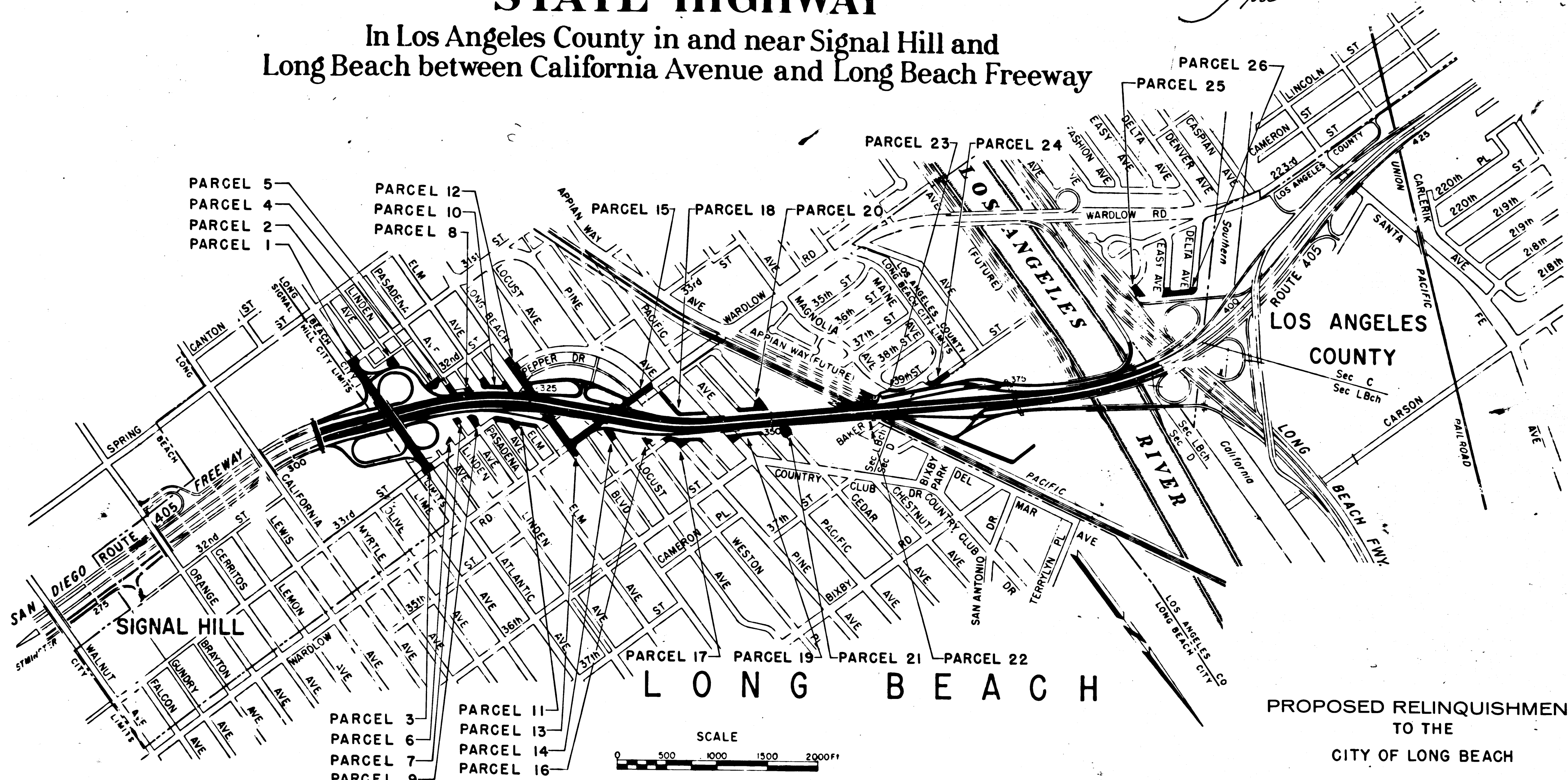
Autboy
DEPUTY DISTRICT ENGINEER
MAY 11, 1965
DATE

IN BOOK 1
AT PAGE 46
OF MAPS PREPARED BY STATE HIGHWAY MAPS
LOS ANGELES COUNTY, CALIF.
RAY E. LEE
COUNTY RECORDER

Free

RIGHT OF WAY MAPS OF
STATE HIGHWAY

In Los Angeles County in and near Signal Hill and
Long Beach between California Avenue and Long Beach Freeway



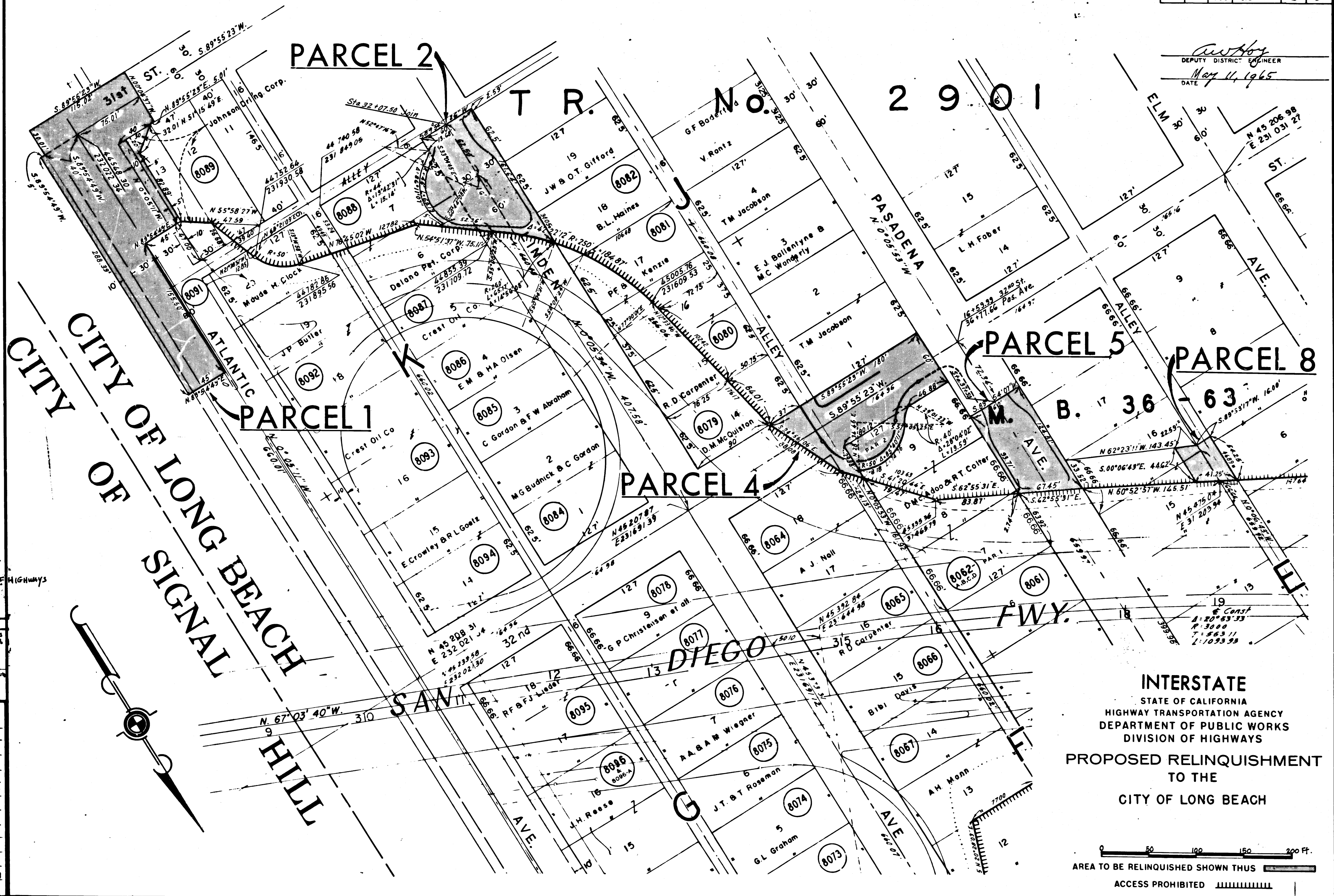
PROPOSED RELINQUISHMENT
TO THE
CITY OF LONG BEACH

REL- 359
DRN BY: J.K.
C.L.C BY: J.N.
CK'D BY: J.D.
BASE MAP NOS.
F-1906, F-1907
& F-1513
REF. MAP NOS.
C.C.M. 285.3,
285.4 & 1972
AS BUILT NOS.
153-20 & 192-13

PK 1
720
46-54

DIST.	COUNTY	ROUTE	POST MILES.	SHEET No.	TOTAL SHEETS
7	LA	405	5.6-7.7	2	9

Authy
 DEPUTY DISTRICT ENGINEER
 DATE *May 14, 1965*



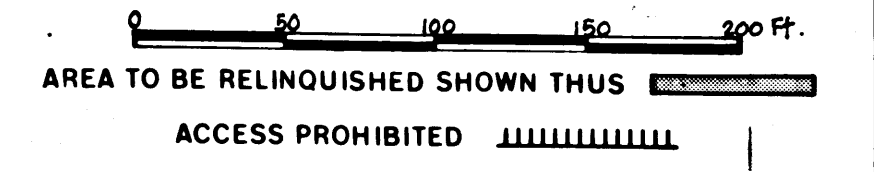
4033 P.S.

RECORDED
 AT REQUEST OF DIV. OF HIGHWAYS
 MAY 14, 1965
 20 9 A.M.

IN BOOK 47
 OF STATE HIGHWAY MAPS
 IN ANGELES COUNTY, CALIF.
 RAY E. LEE
 COUNTY RECORDER
 BY *[Signature]*

REL- 359
 DWN BY J.K.
 C/LC BY J.N.
 CKD BY J.D.
 BASE MAP NOS.
 F-1906, F-1907
 & F-1513
 REF. MAP NOS.
 C.G.M. 285.3
 285.4 & 197.2
 AS BUILT NOS.
 153-20 & 192-13

INTERSTATE
 STATE OF CALIFORNIA
 HIGHWAY TRANSPORTATION AGENCY
 DEPARTMENT OF PUBLIC WORKS
 DIVISION OF HIGHWAYS
 PROPOSED RELINQUISHMENT
 TO THE
 CITY OF LONG BEACH

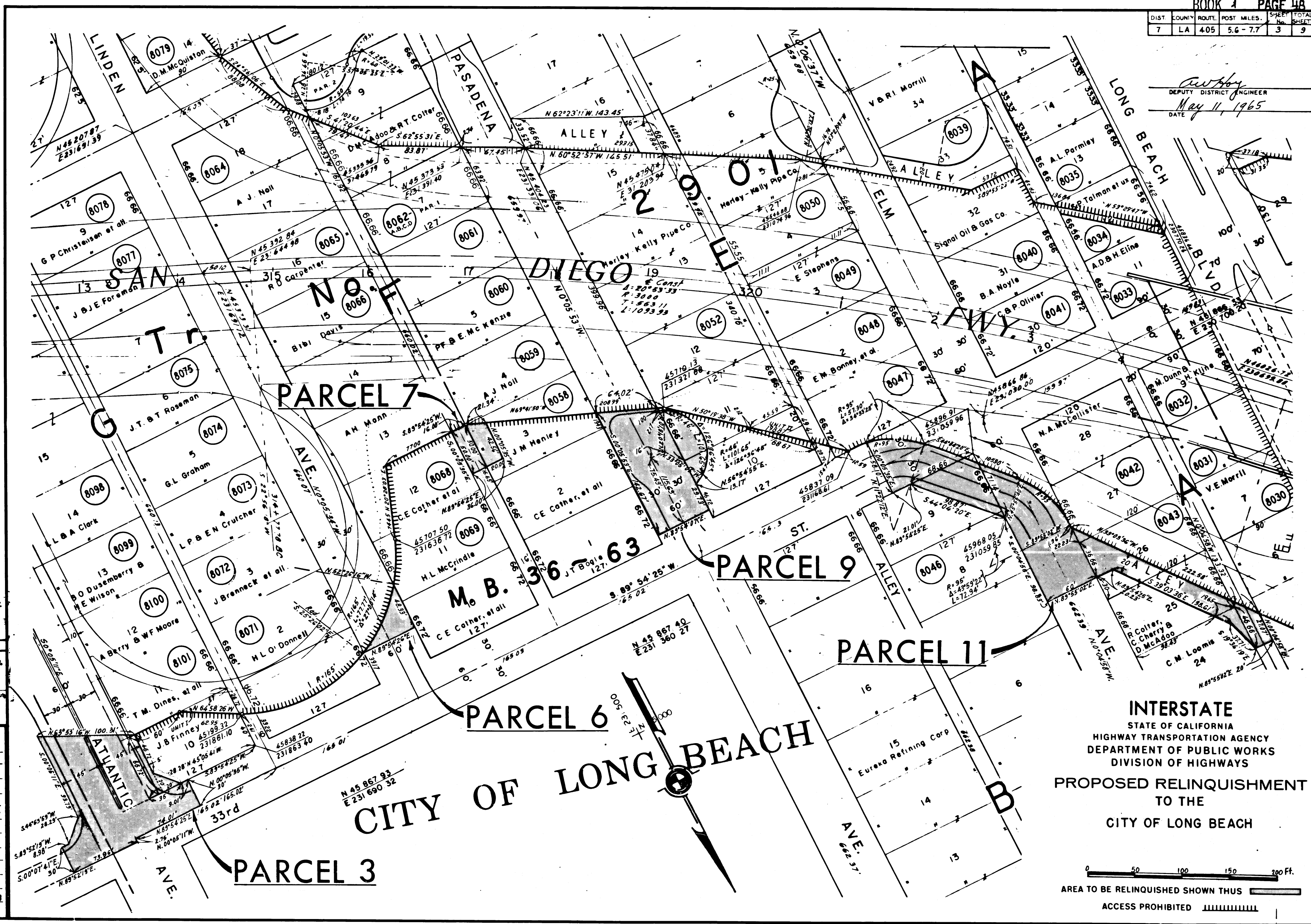


DIST	COUNTY	ROUTE	POST MILES	SHEET No.	TOTAL SHEETS
7	LA	405	5.6-7.7	3	9

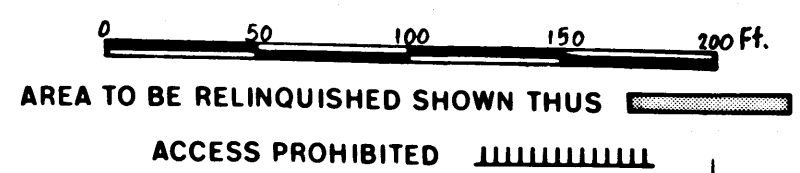
W. H. ...
 DEPUTY DISTRICT ENGINEER
 May 11, 1965
 DATE

4033 9a.3
 RECORDED
 AT THE OFFICE OF THE DIVISION OF HIGHWAYS
 MAY 14, 1965
 25
 9 A.M.
 BY RAY E. LEE
 COUNTY RECORDER

REL- 359
 D.M. BY J.K.
 C.C. BY J.N.
 C.H. BY I.D.
 BASE MAP NOS.
 F-1906, F-1907
 & F-1513
 REF. MAP NOS.
 C.G.M. 285-3
 & 1972
 AS BUILT NOS.
 53-20 & 132-13



INTERSTATE
 STATE OF CALIFORNIA
 HIGHWAY TRANSPORTATION AGENCY
 DEPARTMENT OF PUBLIC WORKS
 DIVISION OF HIGHWAYS
 PROPOSED RELINQUISHMENT
 TO THE
 CITY OF LONG BEACH



DIST.	COUNTY	ROUTE	POST MILES.	SHEET No.	TOTAL SHEETS
7	LA	405	5.6-7.7	4	9

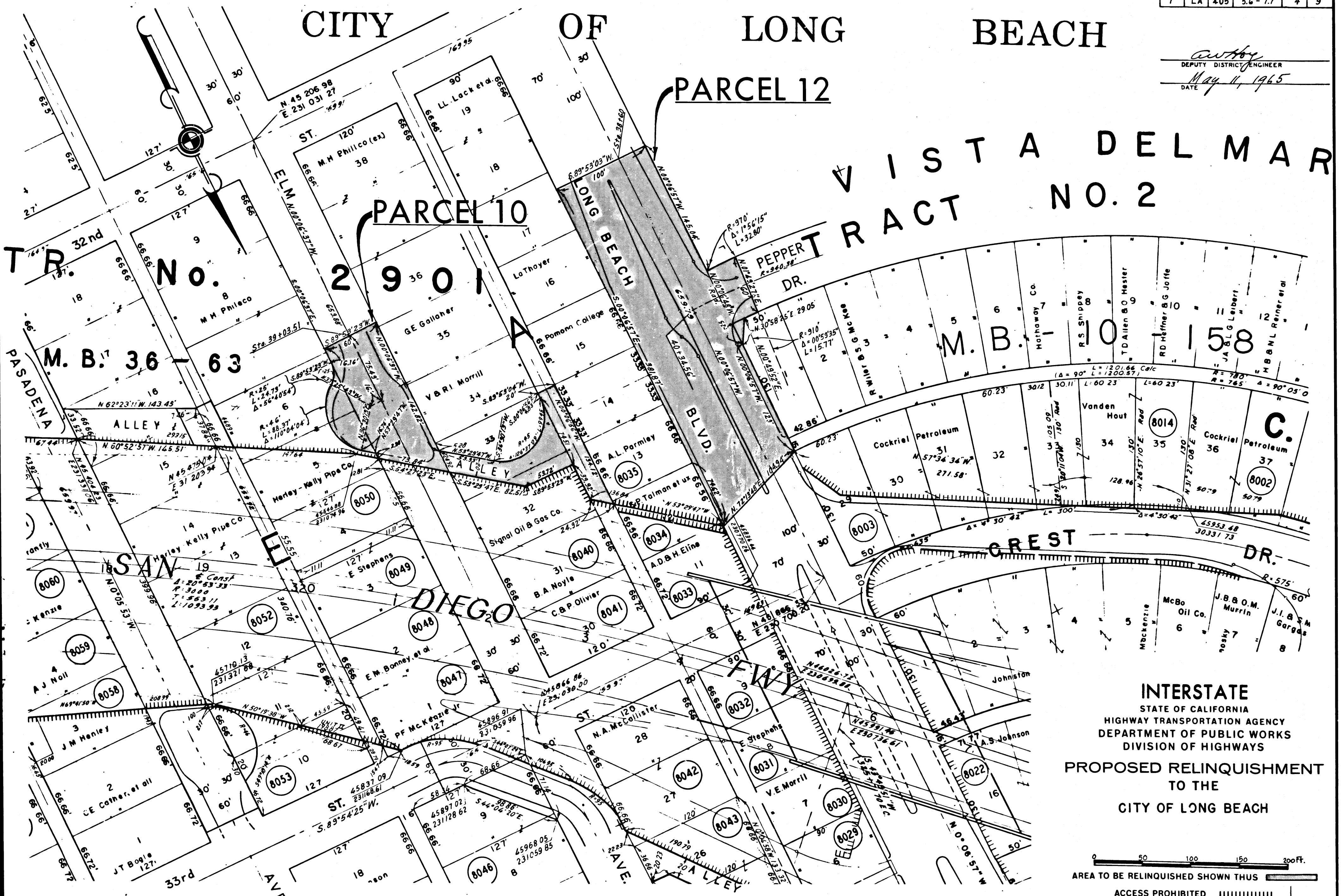
CITY OF LONG BEACH

Arthur
 DEPUTY DISTRICT ENGINEER
 DATE *May 11, 1965*

PARCEL 12

PARCEL 10

VISTA DEL MAR TRACT NO. 2



4033 pg. 4

RECORDED
 AT REQUEST OF DIV. OF HIGHWAYS
 MAY 14, 1965
 20 9AM
 BY RAY E. LEE
 COUNTY RECORDER

REL-359
 WRN BY J.K.
 C.L.C. BY J.N.
 CKD BY J.D.
 BASE MAP NOS.
 F-1906, F-1907
 & F-1513
 REF. MAP NOS.
 C.C.M. 285.3
 285.4 & 1972
 AS BUILT NOS.
 153-20 & 192-19

INTERSTATE
 STATE OF CALIFORNIA
 HIGHWAY TRANSPORTATION AGENCY
 DEPARTMENT OF PUBLIC WORKS
 DIVISION OF HIGHWAYS
 PROPOSED RELINQUISHMENT
 TO THE
 CITY OF LONG BEACH

0 50 100 150 200 Ft.
 AREA TO BE RELINQUISHED SHOWN THUS [shaded area symbol]
 ACCESS PROHIBITED [hatched area symbol]



BOOK 1					SHEET 50	
DIST.	COUNTY	ROUTE	POST MILES.	SHEET No.	TOTAL SHEETS	
7	LA	405	5.6-7.7	5	9	

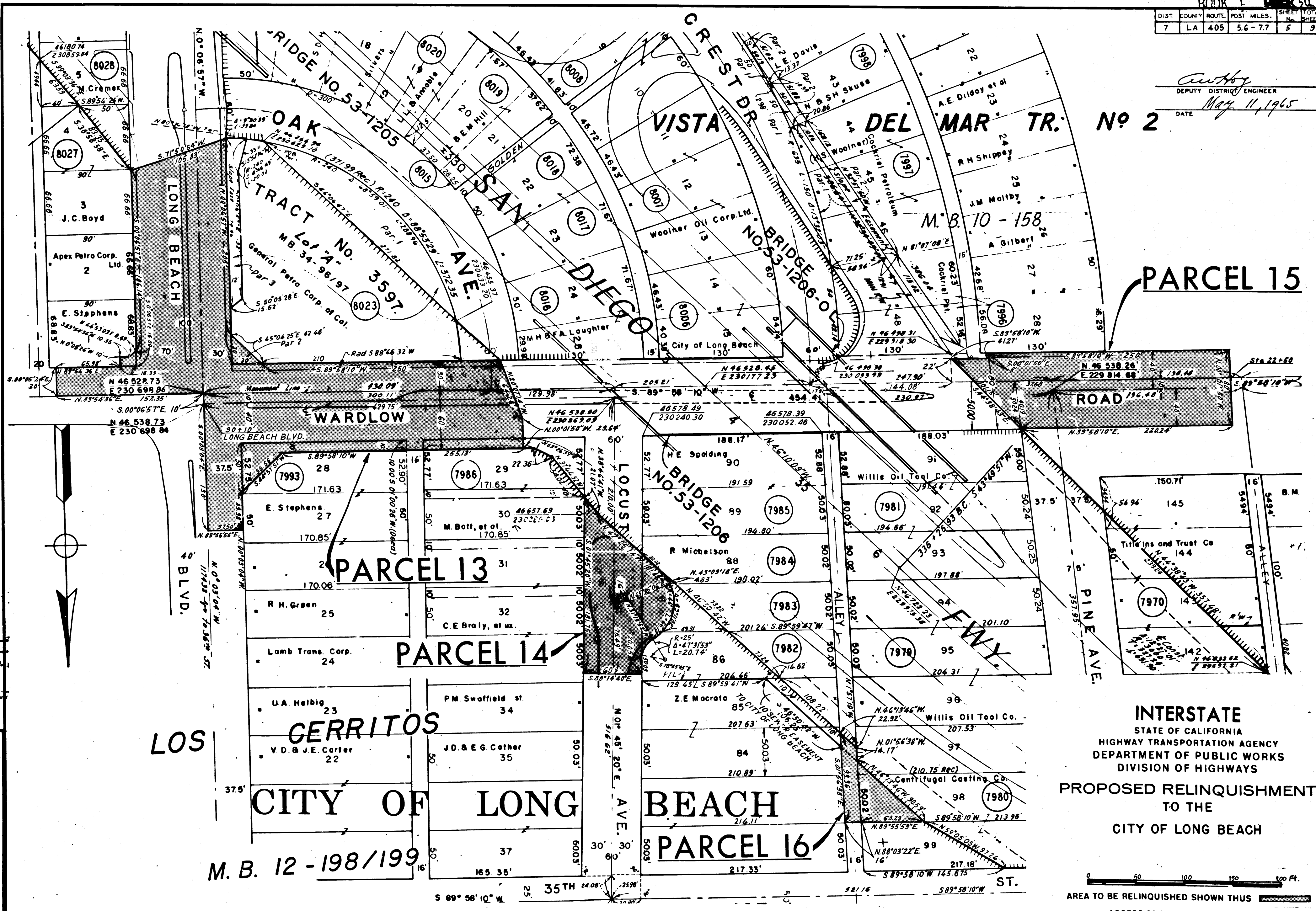
Authy
 DEPUTY DISTRICT ENGINEER
 DATE *May 11, 1965*

No 2

PARCEL 15

INTERSTATE
 STATE OF CALIFORNIA
 HIGHWAY TRANSPORTATION AGENCY
 DEPARTMENT OF PUBLIC WORKS
 DIVISION OF HIGHWAYS
PROPOSED RELINQUISHMENT
 TO THE
CITY OF LONG BEACH

AREA TO BE RELINQUISHED SHOWN THUS 
 ACCESS PROHIBITED 

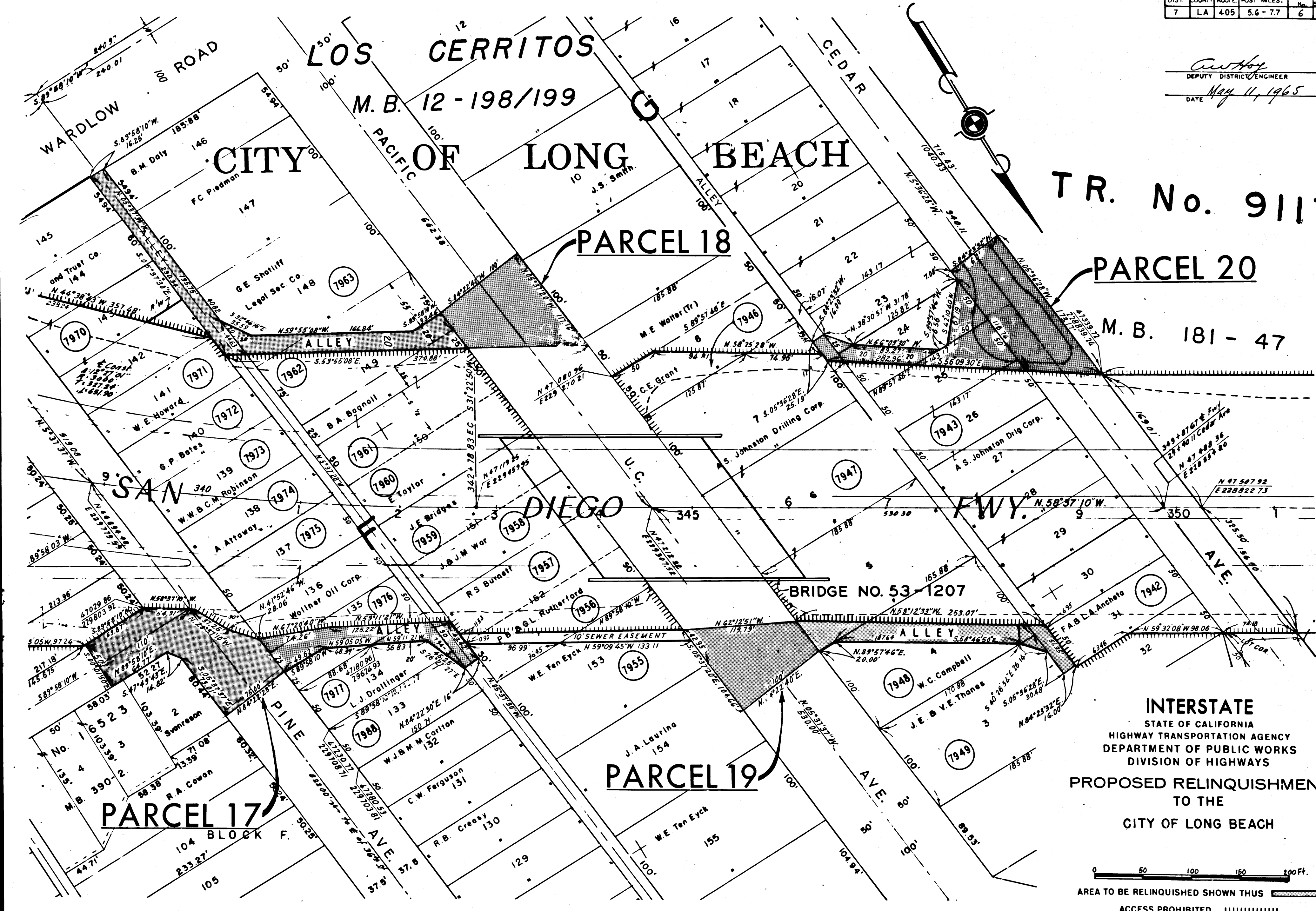


4033 re-5
 RECORDED
 AT REQUEST OF DIV. OF HIGHWAYS
 MAY 14, 1965
 20 9 A.M.
 BY *Ray E. Lee*
 COUNTY RECORDER

REL- 359
 DWT BY *J.K.*
 CLC BY *J.N.*
 CK'D BY *I.D.*
 BASE MAP NOS
E-1906, E-1907
& F-1F13
 REF. MAP NOS
C.C.M. 285.3
285.4 & 1972
 AS BUILT NOS
182-20 & 192-13

DIST.	COUNTY	ROUTE	POST MILES.	SHEET No.	TOTAL SHEETS
7	LA	405	5.6-7.7	6	9

Arthur
 DEPUTY DISTRICT ENGINEER
 DATE *May 11, 1965*

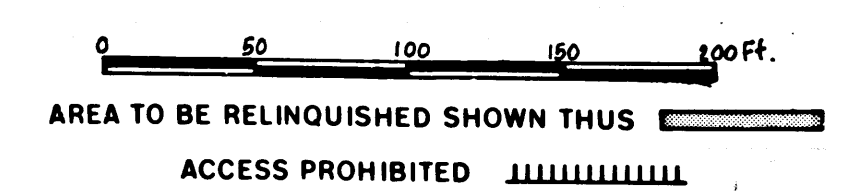


TR. No. 9117
 PARCEL 20
 M.B. 181-47

4033 7c.6
 RECORDED
 AT REQUEST OF DIV. OF HIGHWAY
 MAY 14, 1965
 20 9A.M.
 BY RAY E. LEE
 COUNTY RECORDER

REL- 359
 ORN BY J.K.
 C.L.C BY J.N.
 CKD BY J.D.
 BASE MAP NO'S
 F-1906, F-1907
 & F-1513
 REF. MAP NO'S
 C.C.M. 285.3
 285.4 & 1972
 AS BUILT NO'S
 153-20 & 192-13

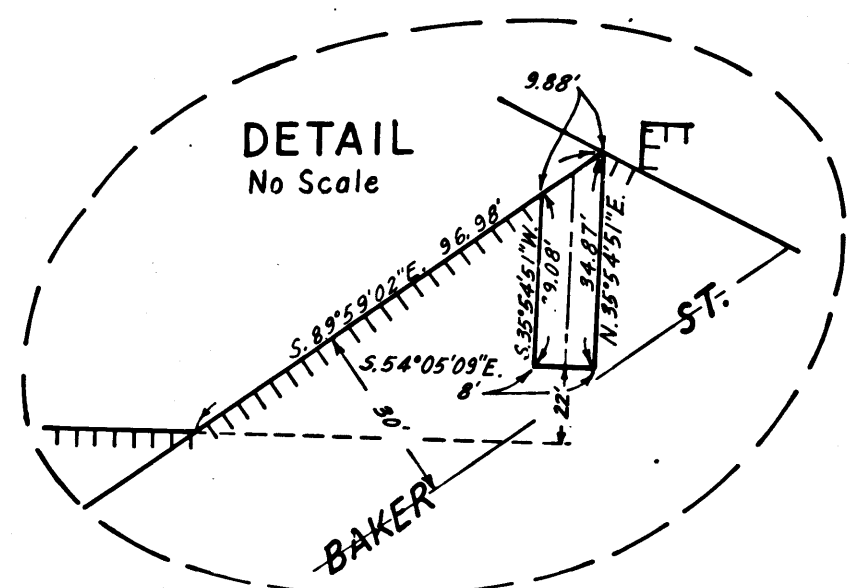
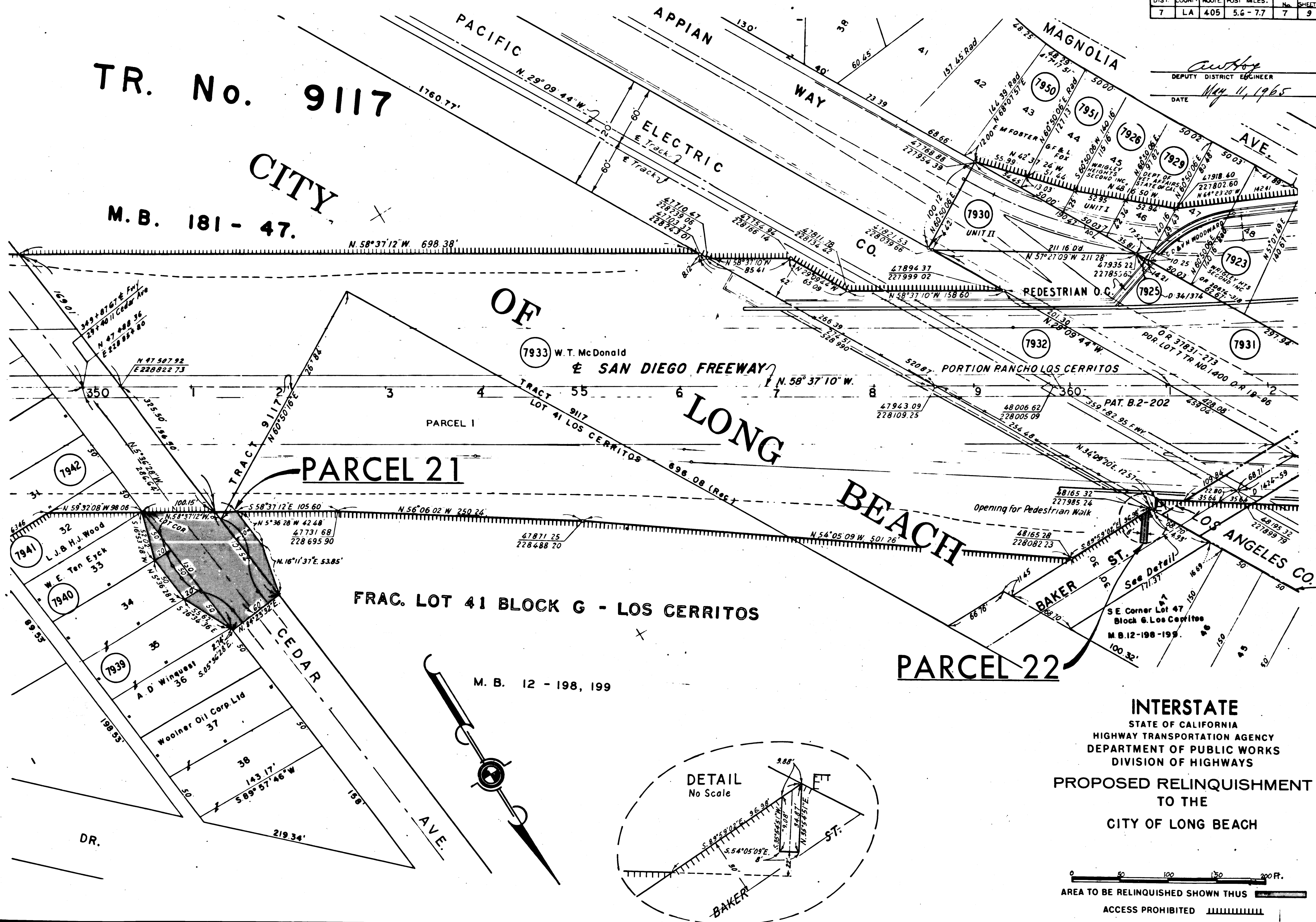
INTERSTATE
 STATE OF CALIFORNIA
 HIGHWAY TRANSPORTATION AGENCY
 DEPARTMENT OF PUBLIC WORKS
 DIVISION OF HIGHWAYS
 PROPOSED RELINQUISHMENT
 TO THE
 CITY OF LONG BEACH



DIST.	COUNTY	ROUTE	POST MILES.	SHEET No.	TOTAL SHEETS
7	LA	405	5.6-7.7	7	9

TR. No. 9117
CITY
M.B. 181-47.

Authey
DEPUTY DISTRICT ENGINEER
DATE *May 11, 1965*



4033 P-7
RECORDED
AT THE OFFICE OF THE COUNTY RECORDER
MAY 14, 1965
9 A.M.
RAY E. LEE
COUNTY RECORDER

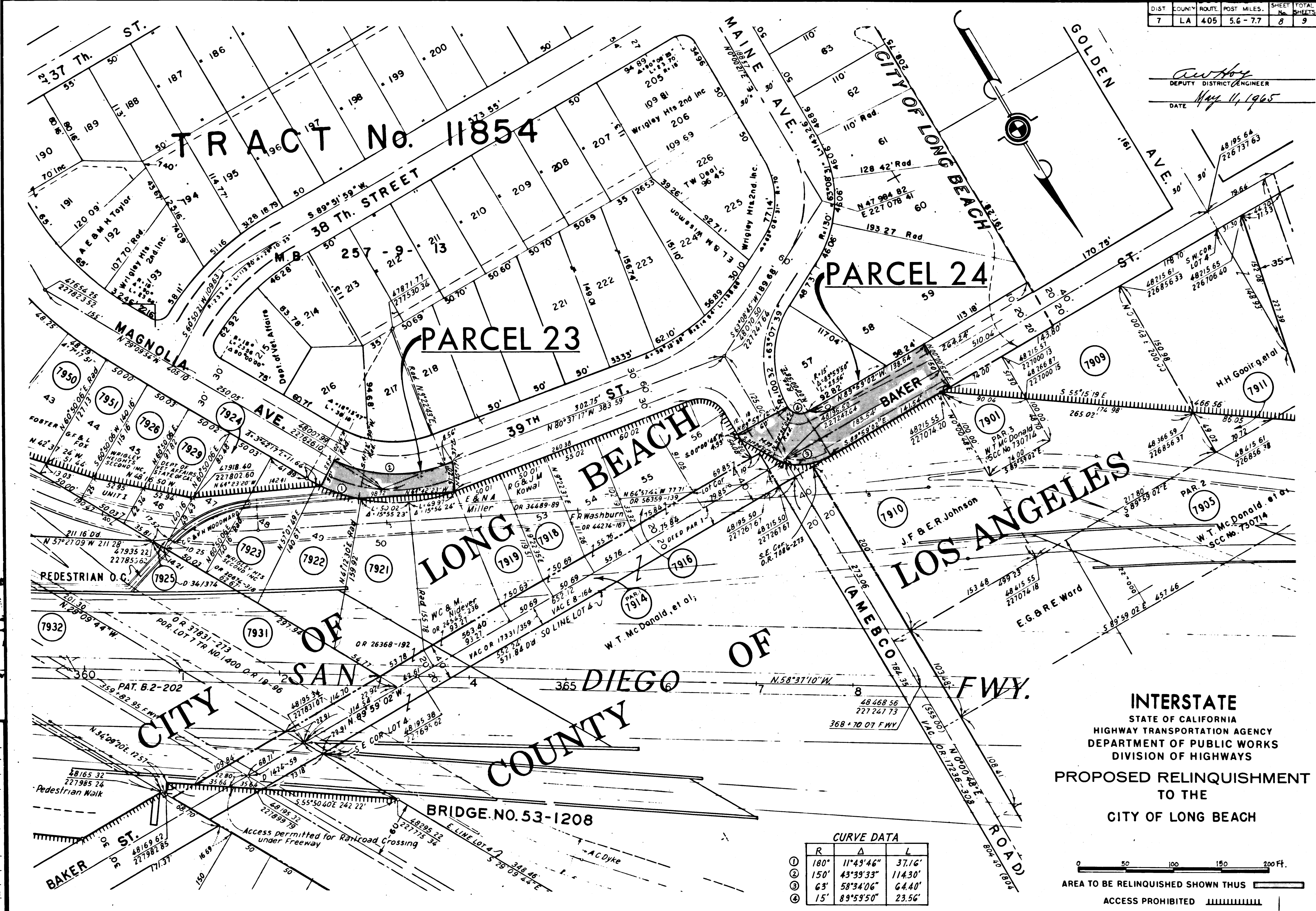
FEL-359
D'FN BY J.K.
C'LC BY J.N.
C'D BY I.D.
BASE MAP NOS.
F-1906, F-1907
& F-1513
R.F. MAP NOS.
C.G.M. 285.3
85.4 & 197.2
AS BUILT NOS.
63-20 & 192-13

INTERSTATE
STATE OF CALIFORNIA
HIGHWAY TRANSPORTATION AGENCY
DEPARTMENT OF PUBLIC WORKS
DIVISION OF HIGHWAYS
PROPOSED RELINQUISHMENT
TO THE
CITY OF LONG BEACH

0 50 100 150 200 FT.
AREA TO BE RELINQUISHED SHOWN THUS ACCESS PROHIBITED

DIST.	COUNTY	ROUTE	POST MILES.	SHEET No.	TOTAL SHEETS
7	LA	405	5.6 - 7.7	8	9

Arthur H. ...
 DEPUTY DISTRICT ENGINEER
 DATE *May 11, 1965*



4053 P.C.S.
 RECORDED
 AT REQUEST OF DIV. OF HIGHWAYS
 MAY 14, 1965
 20:09 A.M.
 BOOK 53
 AT THE COUNTY CLERK'S OFFICE
 COUNTY OF LOS ANGELES
 BY *[Signature]*

REL- 359
 DRN BY: J.K.
 CLC BY: J.N.
 CKD BY: 10
 BASE MAP NOS.
 F-1906, F-1907
 & F-1513
 REF. MAP NOS.
 C.G.M. 285.3
 285.4 & 1972
 AS BUILT NOS.
 153-20 & 192-13

CURVE DATA

R	Δ	L
180'	11°49'46"	37.16'
150'	43°39'33"	114.30'
63'	58°34'06"	64.40'
15'	89°59'50"	23.56'

INTERSTATE
 STATE OF CALIFORNIA
 HIGHWAY TRANSPORTATION AGENCY
 DEPARTMENT OF PUBLIC WORKS
 DIVISION OF HIGHWAYS
 PROPOSED RELINQUISHMENT
 TO THE
 CITY OF LONG BEACH



0 50 100 150 200 Ft.
 AREA TO BE RELINQUISHED SHOWN THUS
 ACCESS PROHIBITED

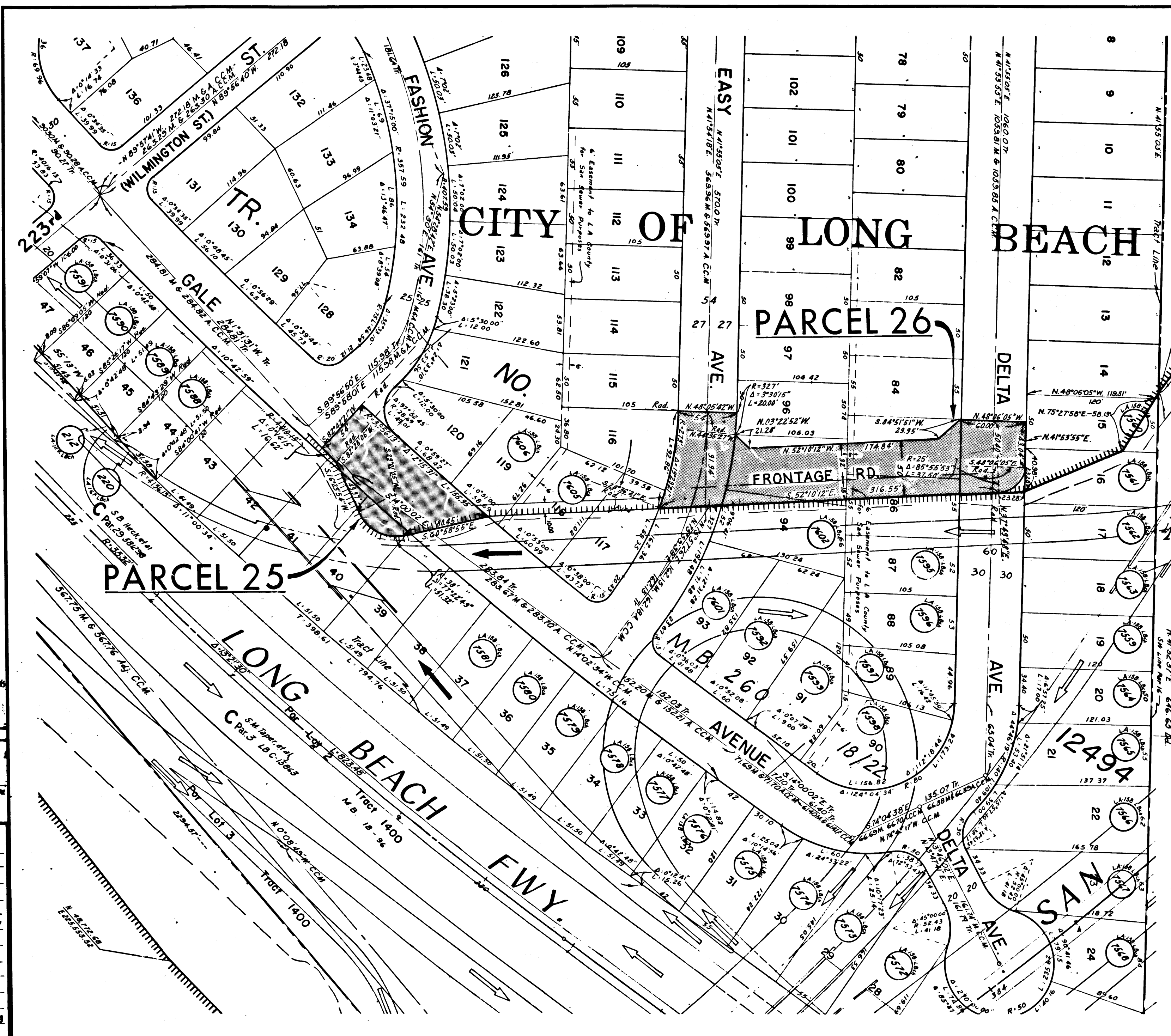
DIST.	COUNTY	ROUTE	POST MILES.	SHEET No.	TOTAL SHEETS
7	LA	405	5.6-7.7	9	9

Curby
 DEPUTY DISTRICT ENGINEER
 DATE *May 11, 1965*

COUNTY OF LOS ANGELES

INTERSTATE
 STATE OF CALIFORNIA
 HIGHWAY TRANSPORTATION AGENCY
 DEPARTMENT OF PUBLIC WORKS
 DIVISION OF HIGHWAYS
 PROPOSED RELINQUISHMENT
 TO THE
 CITY OF LONG BEACH

0 50 100 150 200 FT.
 AREA TO BE RELINQUISHED SHOWN THUS 
 ACCESS PROHIBITED 



CITY OF LONG BEACH

PARCEL 26

PARCEL 25

4033 P.9

RECORDED
 AT THE OFFICE OF THE COUNTY CLERK
 MAY 14, 1965
 2:09 P.M.

BOOK 1 PAGE 54
 OF STATE HIGHWAY MAPS
 LOS ANGELES COUNTY, CALIF.
 RAY E. LEE
 COUNTY RECORDER

REL- 359
 DRN BY J.L.
 C.L.C. BY J.N.
 CH'D BY S.D.
 BASE MAP NO'S
 F-1906, F-1907
 & F-1513
 REF. MAP NO'S
 C.G.M. 285.3
 285.4 & 1972
 AS BUILT NO'S
 153-20 & 132-13