

7	LA	5	13.7	1	2
---	----	---	------	---	---

STATE OF CALIFORNIA  
HIGHWAY TRANSPORTATION AGENCY  
DEPARTMENT OF PUBLIC WORKS  
DIVISION OF HIGHWAYS  
RIGHT OF WAY MAPS OF  
**STATE HIGHWAY**

4034

*Carboy*  
DEPUTY DIVISION ENGINEER

RECORDED  
AT REQUEST OF DIV. OF HIGHWAYS  
MAY 14, 1965

DATE *May 11, 1965*

20 9 A.M.

BOOK 1

AT PAGE 55

OF STATE HIGHWAY MAPS

LOS ANGELES COUNTY, CALIF.

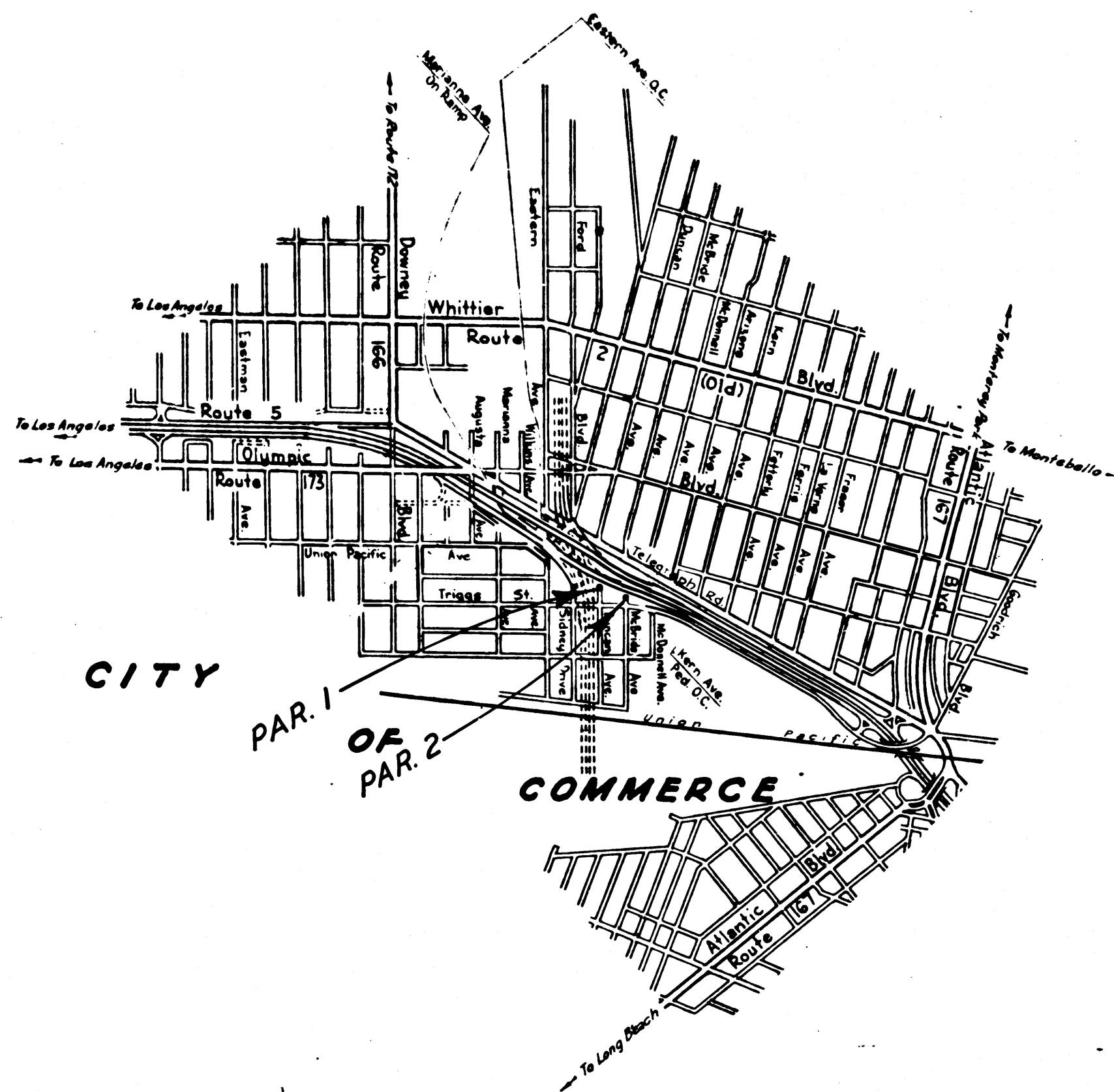
RAY E. LEE

COUNTY RECORDER

BY *[Signature]* Deputy

*Free*

In Los Angeles County, In the City of Commerce Along the Santa Ana Freeway at McBride Avenue and at Duncan Avenue



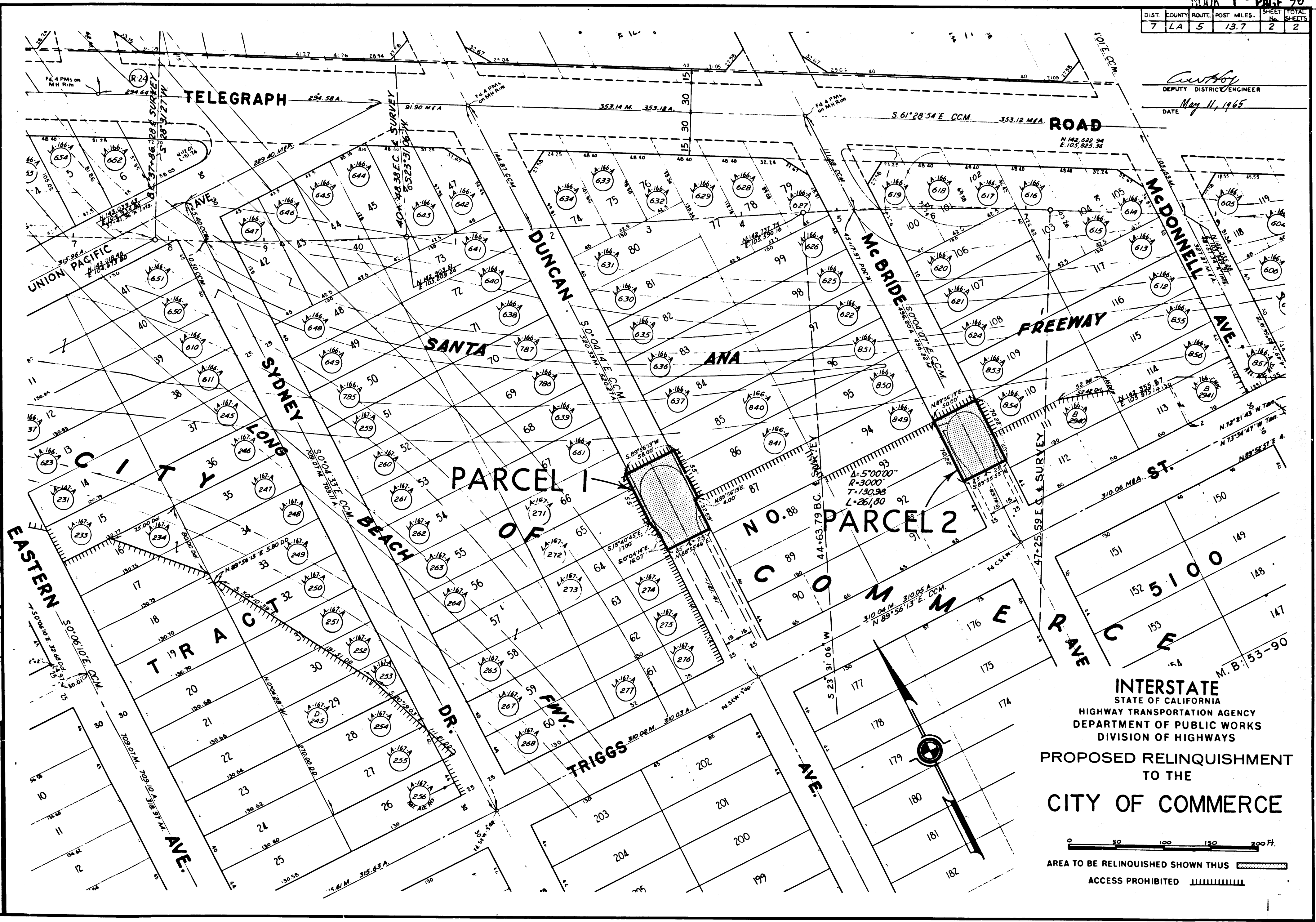
INTERSTATE  
PROPOSED RELINQUISHMENT  
TO THE  
CITY OF COMMERCE

REL- 408  
DRN BY *RSJ*  
C'LC BY *J.M.K.*  
CKD BY *J.D.*  
BASE MAP NO'S...  
*E-2010*  
REF MAP NO'S  
AS BUILT NO'S  
*196-20*

*BA  
7/15/54*

DIST.	COUNTY	ROUTE	POST MILES.	SHEET	TOTAL SHEETS
7	LA	5	13.7	2	2

*Curtis*  
 DEPUTY DISTRICT ENGINEER  
 DATE *May 11, 1965*



4034 rev.2

RECORDED  
 AT REQUEST OF DIV. OF HIGHWAYS  
 MAY 14, 1965  
 10 9 A.M.

BY  
 AT PAGE 56  
 OF STATE HIGHWAY MAPS  
 LOS ANGELES COUNTY, CALIF.  
 TRAY B. LEE  
 COUNTY CLERK

**FEL-408**  
 DESIGNED BY *R.S.D.*  
 CHECKED BY *J.W.H.*  
 C.R.D. BY *J.D.*  
 BASE MAP NO'S...  
*F-2010*  
 REF. MAP NO'S...  
 AS BUILT NO'S...  
*106-20*

**INTERSTATE**  
 STATE OF CALIFORNIA  
 HIGHWAY TRANSPORTATION AGENCY  
 DEPARTMENT OF PUBLIC WORKS  
 DIVISION OF HIGHWAYS  
 PROPOSED RELINQUISHMENT  
 TO THE  
**CITY OF COMMERCE**

