

Sheet 1125

DIST.	COUNTY	ROUTE	POST MILES	SHEET No.	TOTAL SHEETS
7	L.A.	101	53.3-34.0	1	4

STATE OF CALIFORNIA
HIGHWAY TRANSPORTATION AGENCY
DEPARTMENT OF PUBLIC WORKS
DIVISION OF HIGHWAYS

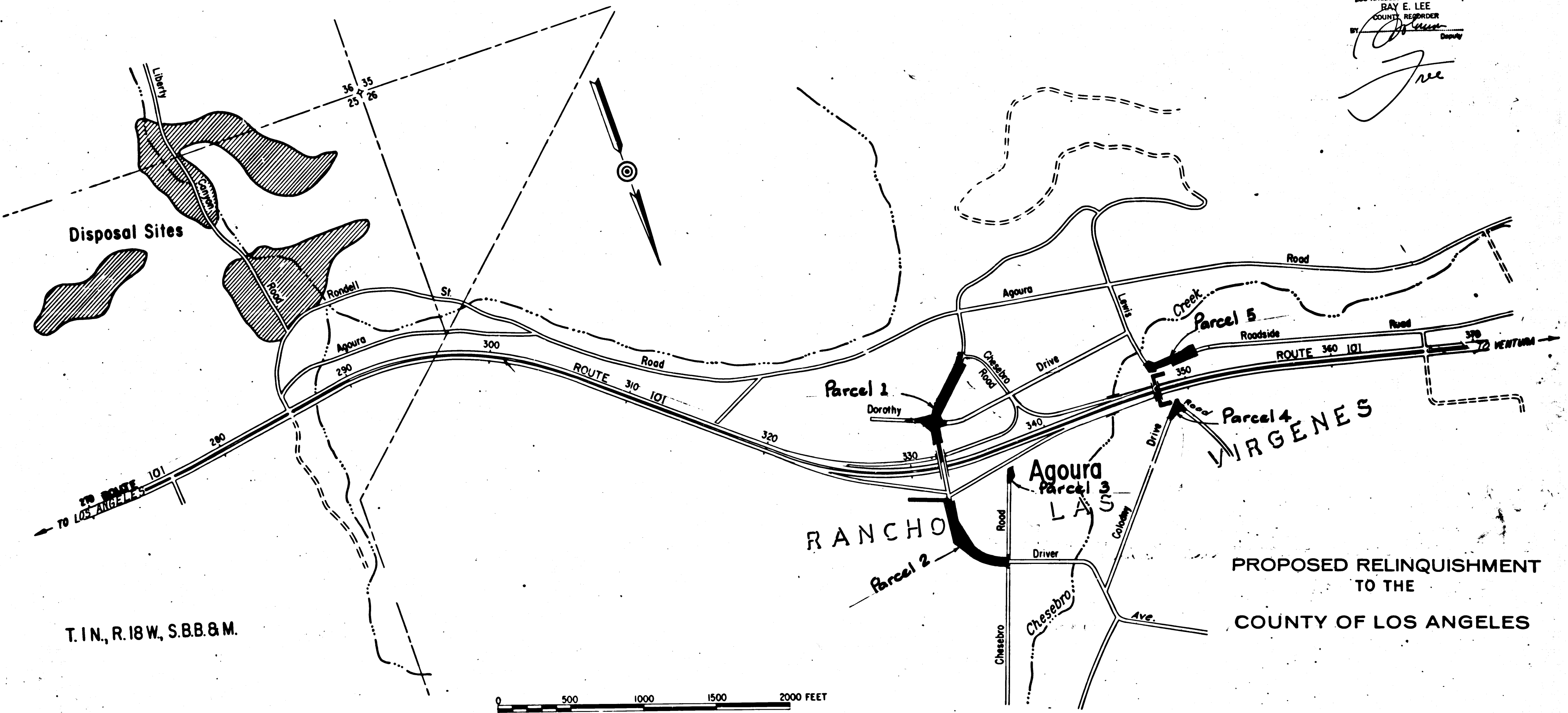
Ray E. Lee
DEPUTY DISTRICT ENGINEER
DATE May 7, 1965

RIGHT OF WAY MAPS OF
STATE HIGHWAY

5008

In Los Angeles County between 0.4 mile southeast
of Chesebro Road and Lewis Road in Agoura

RECORDED
AT REQUEST OF DIV. OF HIGHWAYS
MAY 14, 1965
25 MIN. 1 P.M.
IN BOOK 57
AT PAGE 57
OF STATE HIGHWAY MAPS
LOS ANGELES COUNTY, CALIF.
RAY E. LEE
COUNTY REGISTRAR
BY *[Signature]* Deputy



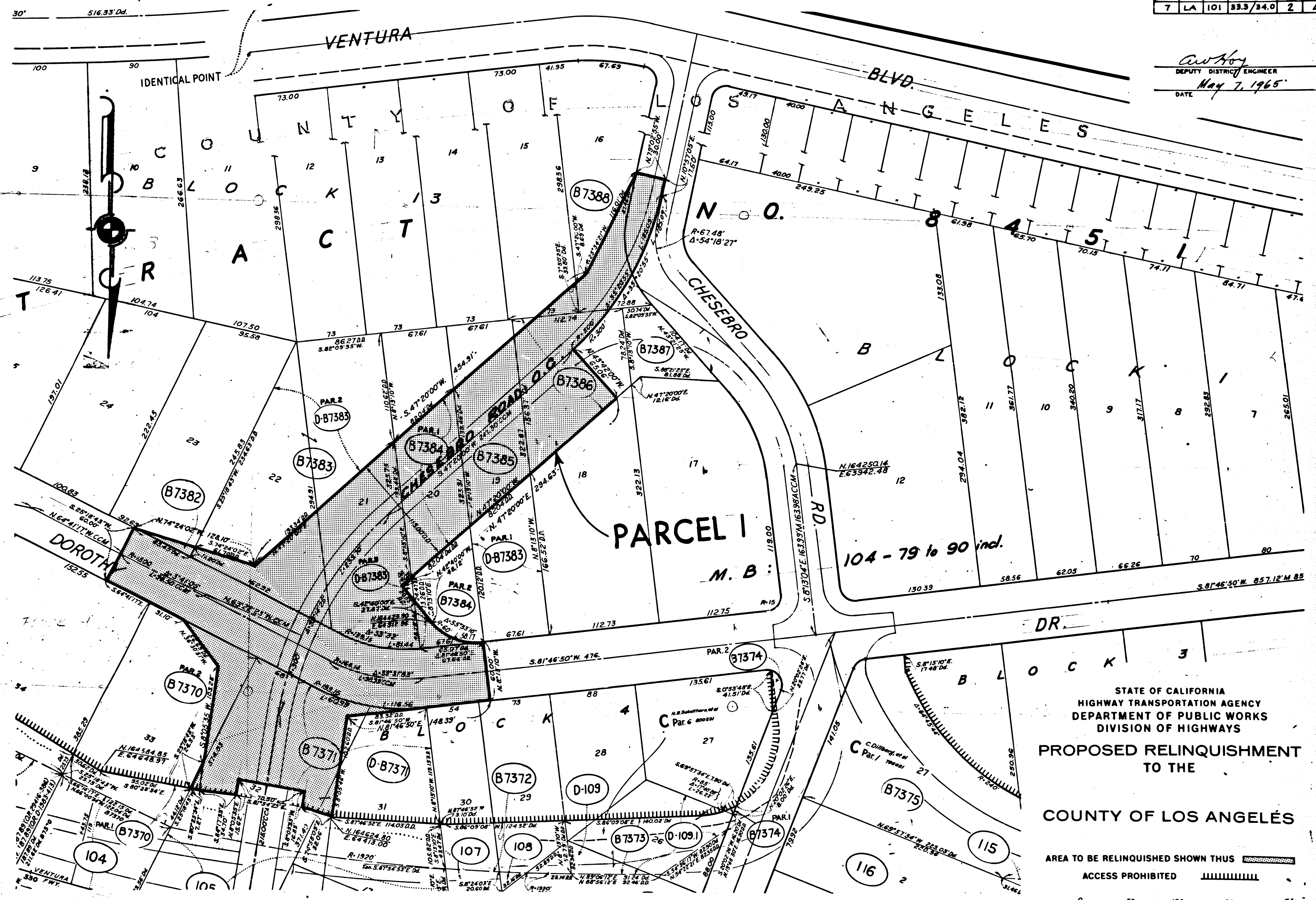
REL-384
BY: *RF*
CHKD BY: J. Nelson
CRD BY: J.D.
BASE MAP NOS.
F-2216 &
F-2217
REF. MAP NOS.
C.M. 13.2
AS BUILT NO'S.
14-6

T. 1N., R. 18W., S. 8B. & M.

PROPOSED RELINQUISHMENT
TO THE
COUNTY OF LOS ANGELES

DIST.	COUNTY	ROUTE	POST MILES.	SHEET No.	TOTAL SHEETS
7	LA	101	33.3/34.0	2	4

C. W. Hoy
 DEPUTY DISTRICT ENGINEER
 DATE *May 7, 1965*

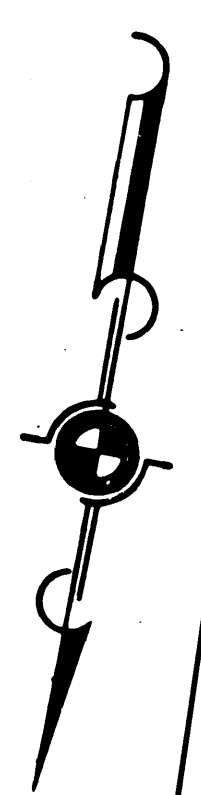
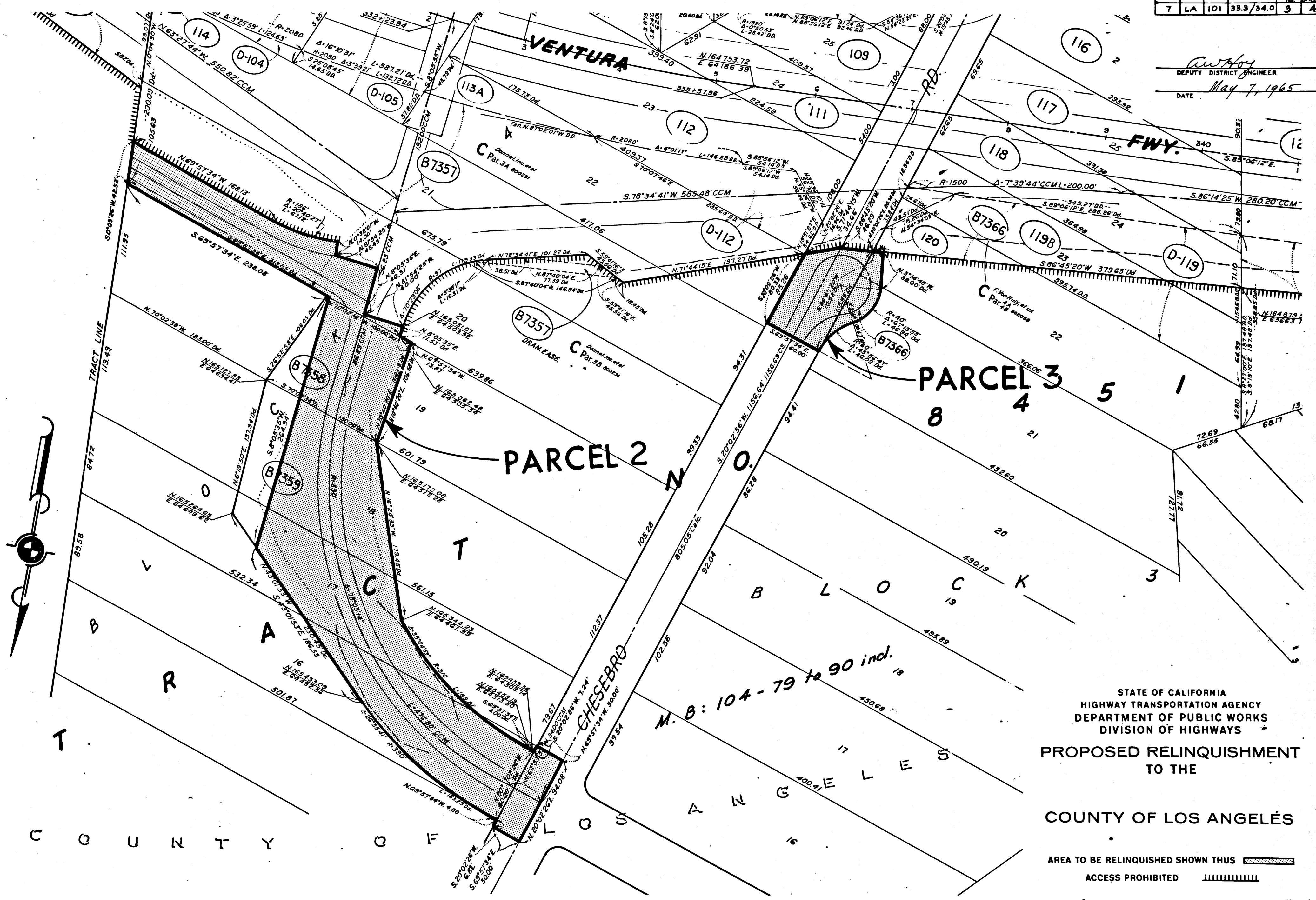


5008 PG. 2
 RECORDED
 AT REQUEST OF DISTRICT ENGINEER
 MAY 14 1965
 25 1 P.M.
 PAGE 58
 OF STATE HIGHWAY MAPS
 LOS ANGELES COUNTY, CALIF.
 T. A. LEE
 COUNTY RECORDER
REL-384
 DRY BY *PE*
 C.L.C. BY *J.M.*
 CK'D BY *J.D.*
 BASE MAP NOS.
 F-2217.1
 REF. MAP NOS.
 3.2
 AS BUILT NOS.
 154-6

STATE OF CALIFORNIA
 HIGHWAY TRANSPORTATION AGENCY
 DEPARTMENT OF PUBLIC WORKS
 DIVISION OF HIGHWAYS
**PROPOSED RELINQUISHMENT
 TO THE
 COUNTY OF LOS ANGELES**
 AREA TO BE RELINQUISHED SHOWN THUS
 ACCESS PROHIBITED
 0 50 100 150 200 FT.

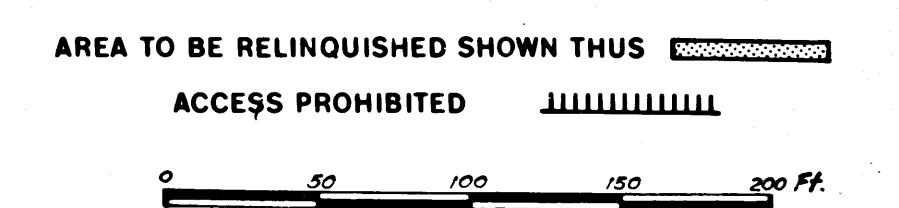
DIST.	COUNTY	ROUTE	POST MILES.	SHEET No.	TOTAL SHEETS
7	LA	101	33.3/34.0	3	4

Anthony
 DEPUTY DISTRICT ENGINEER
 DATE *May 7, 1965*



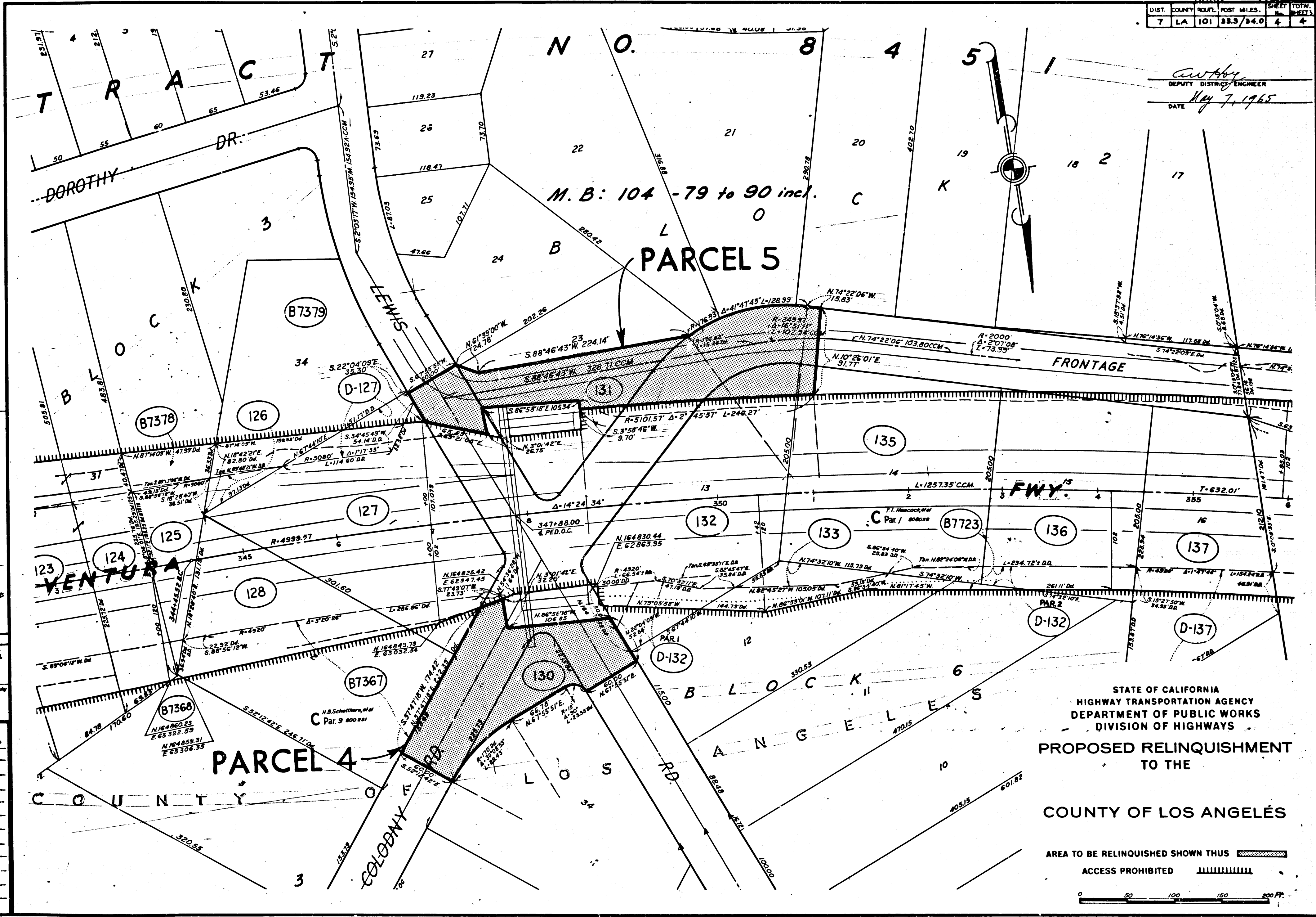
5005 Rev. 3
 RECORDED
 AT REQUEST OF DIST. OF HIGHWAYS
 MAY 14, 1965
 25 MIN. 1 P.M.
 IN BOOK 59
 AT PART OF STATE HIGHWAY MAPS
 LOS ANGELES COUNTY CALIF.
 RAY E. LEE
 COUNTY RECORDER
 REL-384
 DESIGNED BY R.E.
 CHECKED BY J.M.
 C.M.D. BY J.D.
 BASE MAP NO'S F-2217J
 REVISION MAP NO'S 13.2
 AS BUILT NO'S 154-6

STATE OF CALIFORNIA
 HIGHWAY TRANSPORTATION AGENCY
 DEPARTMENT OF PUBLIC WORKS
 DIVISION OF HIGHWAYS
 PROPOSED RELINQUISHMENT
 TO THE
 COUNTY OF LOS ANGELES



DIST.	COUNTY	ROUTE	POST MILES	SHEET NO.	TOTAL SHEETS
7	LA	101	33.3/34.0	4	4

C. W. H. H.
DEPUTY DISTRICT ENGINEER
DATE *May 7, 1965*



5008 PG. 14
RECORDED
AT 11:14 A.M. 11/14/1965
BY 25
FAY E. LEE
COUNTY CLERK

REL-384
DRA. BY B.E.
C.L.C. BY J.N.
CHKD BY J.D.
BASE MAP NOS. F-2217.1
REF. MAP NOS. 3.2
AS BUILT NOS. 54-C

STATE OF CALIFORNIA
HIGHWAY TRANSPORTATION AGENCY
DEPARTMENT OF PUBLIC WORKS
DIVISION OF HIGHWAYS
PROPOSED RELINQUISHMENT
TO THE
COUNTY OF LOS ANGELES

AREA TO BE RELINQUISHED SHOWN THUS
ACCESS PROHIBITED
0 50 100 150 200 FT.