

DIST	COUNTY	ROUTE	POST MILES	SHEET No.	TOTAL SHEETS
7	LA	14	46.7/55.0	1	12

STATE OF CALIFORNIA  
 HIGHWAY TRANSPORTATION AGENCY  
 DEPARTMENT OF PUBLIC WORKS  
 DIVISION OF HIGHWAYS

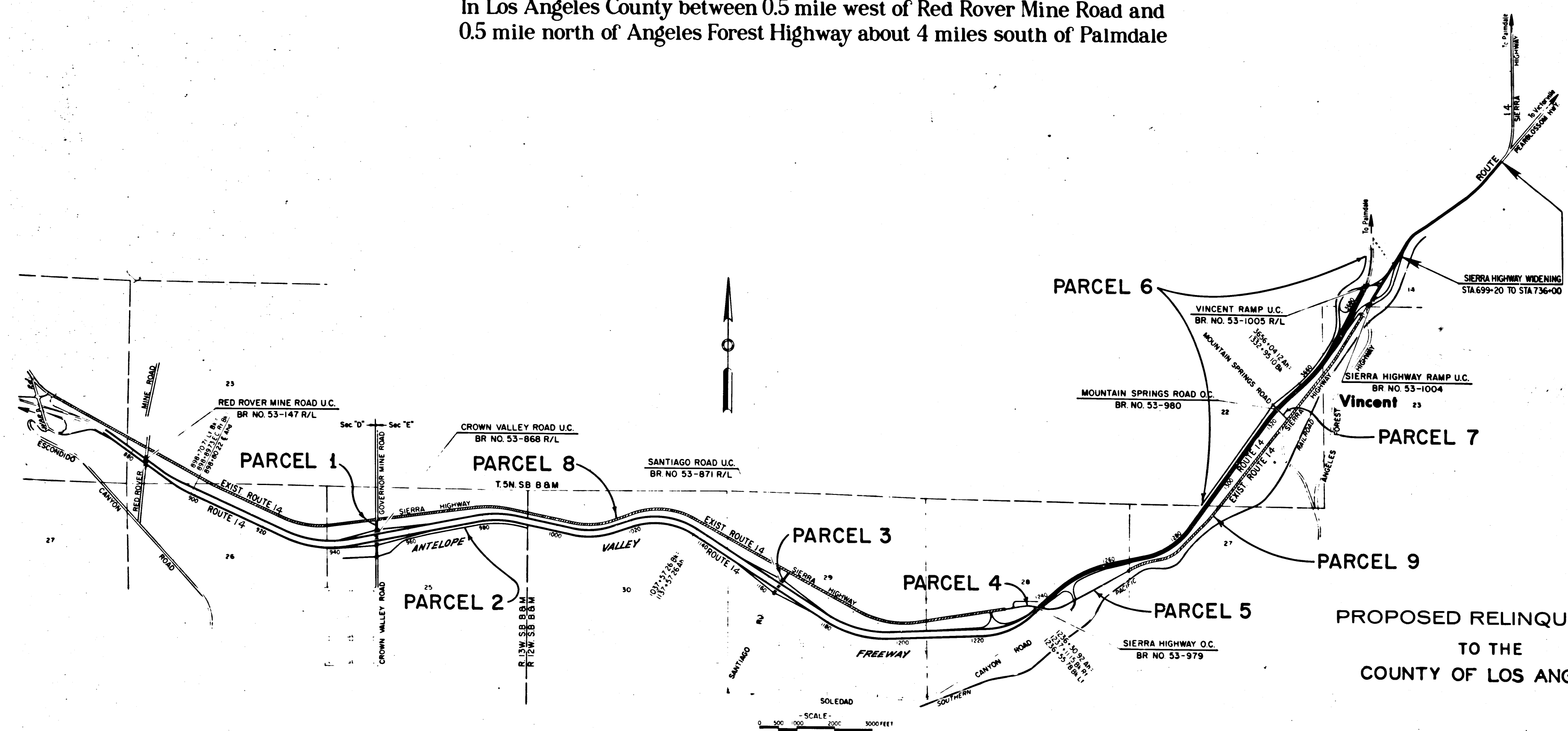
---

RIGHT OF WAY MAPS OF  
**STATE HIGHWAY**

*C. H. Hoy*  
 DEPUTY DISTRICT ENGINEER  
 DATE *June 4, 1965*

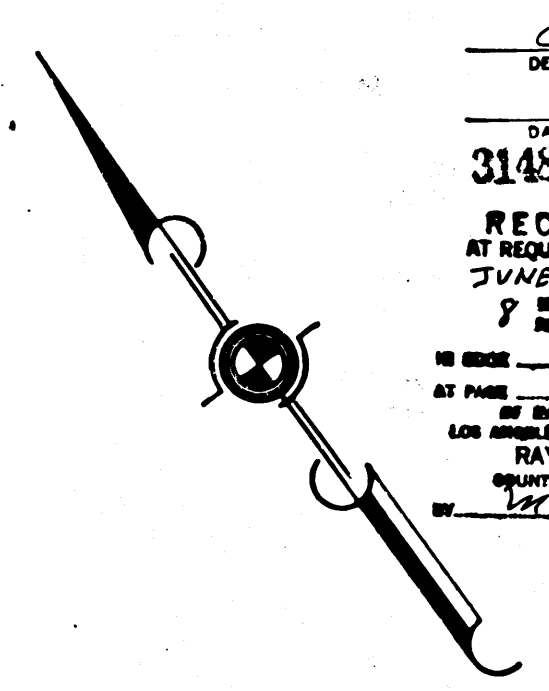
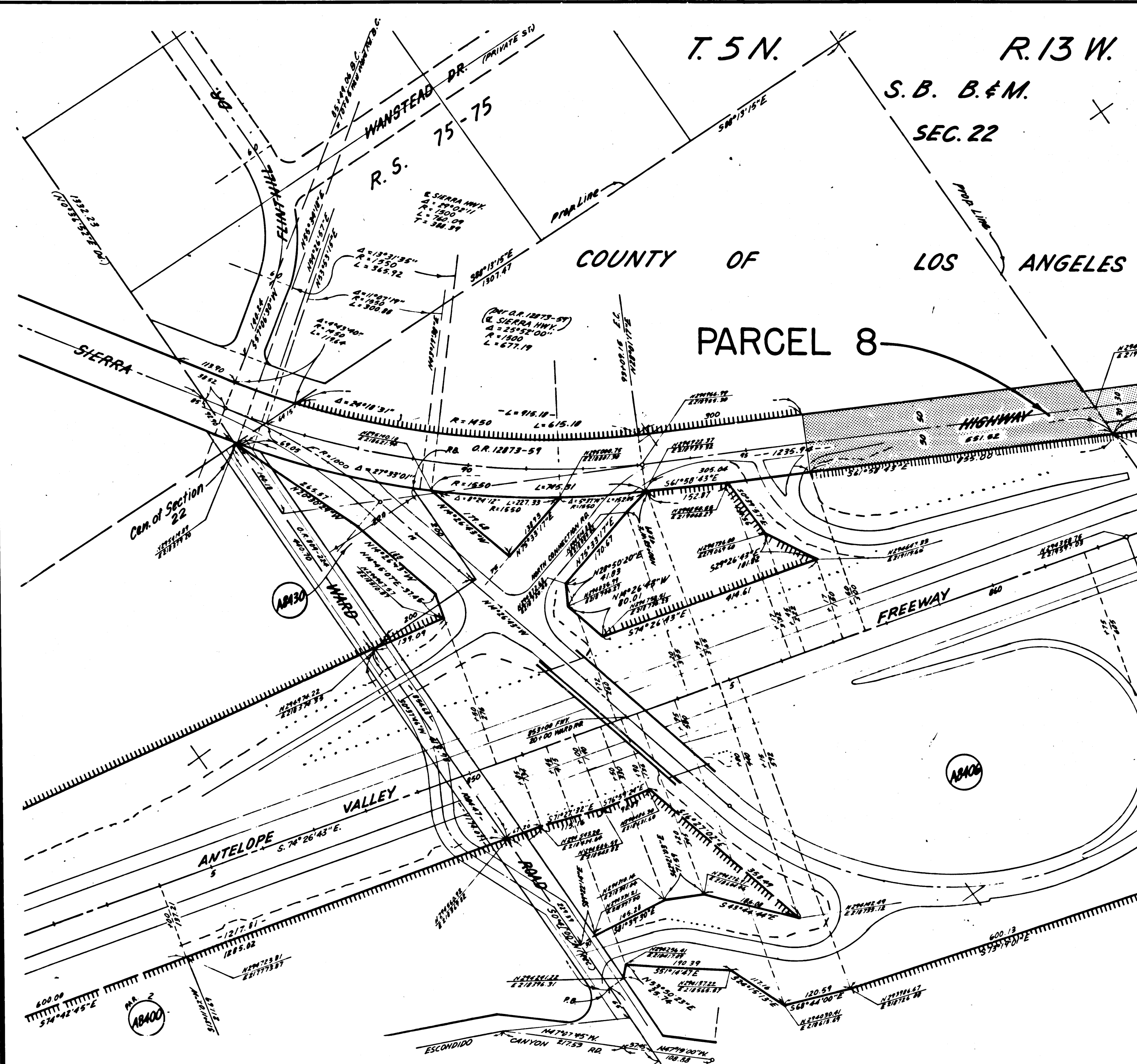
3148  
 RECORDED  
 BY REQUEST OF *STATE DIV. OF HIGHWAYS*  
 JUNE 10, 1965  
 8 AM 9 AM  
 BY *Ray E. Lee*  
 COUNTY RECORDER  
 FREE

In Los Angeles County between 0.5 mile west of Red Rover Mine Road and  
 0.5 mile north of Angeles Forest Highway about 4 miles south of Palmdale



REL-362  
 DWN BY *W.F.S.*  
 C.L.C. BY *J.W.H.*  
 CK'D BY *H.S.L.*  
 BASE MAP NOS.  
*E-1066 E-1067*  
*F-1068 F-1069*  
 REF. MAP NOS.  
 AS BUILT NOS.  
*154-11*

PROPOSED RELINQUISHMENT  
 TO THE  
 COUNTY OF LOS ANGELES



*C. W. Hoy*  
 DEPUTY DISTRICT ENGINEER

DATE *June 4, 1965*  
 3148

RECORDED  
 AT REQUEST OF *CDM* DIV. OF HIGHWAYS  
 JUNE 10, 1965  
 8 9 AM

NO. OF SHEETS *84*  
 AT PAGE *84*  
 OF *ENGINEERING* STATE HIGHWAY MAPS  
 LOS ANGELES COUNTY, CALIF.  
 RAY E. LEE  
 COUNTY ENGINEER  
*M. J. [unclear]*

REL-362  
 DWN BY *W.E.S.*  
 C/LC BY *J.W.H.*  
 CK'D BY *H.S.L.*  
 BASE MAP NO'S  
*F-1066 F-1067*  
*F-1068 F-1069*  
 REF. MAP NO'S  
 AS BUILT NO'S  
*154-11*

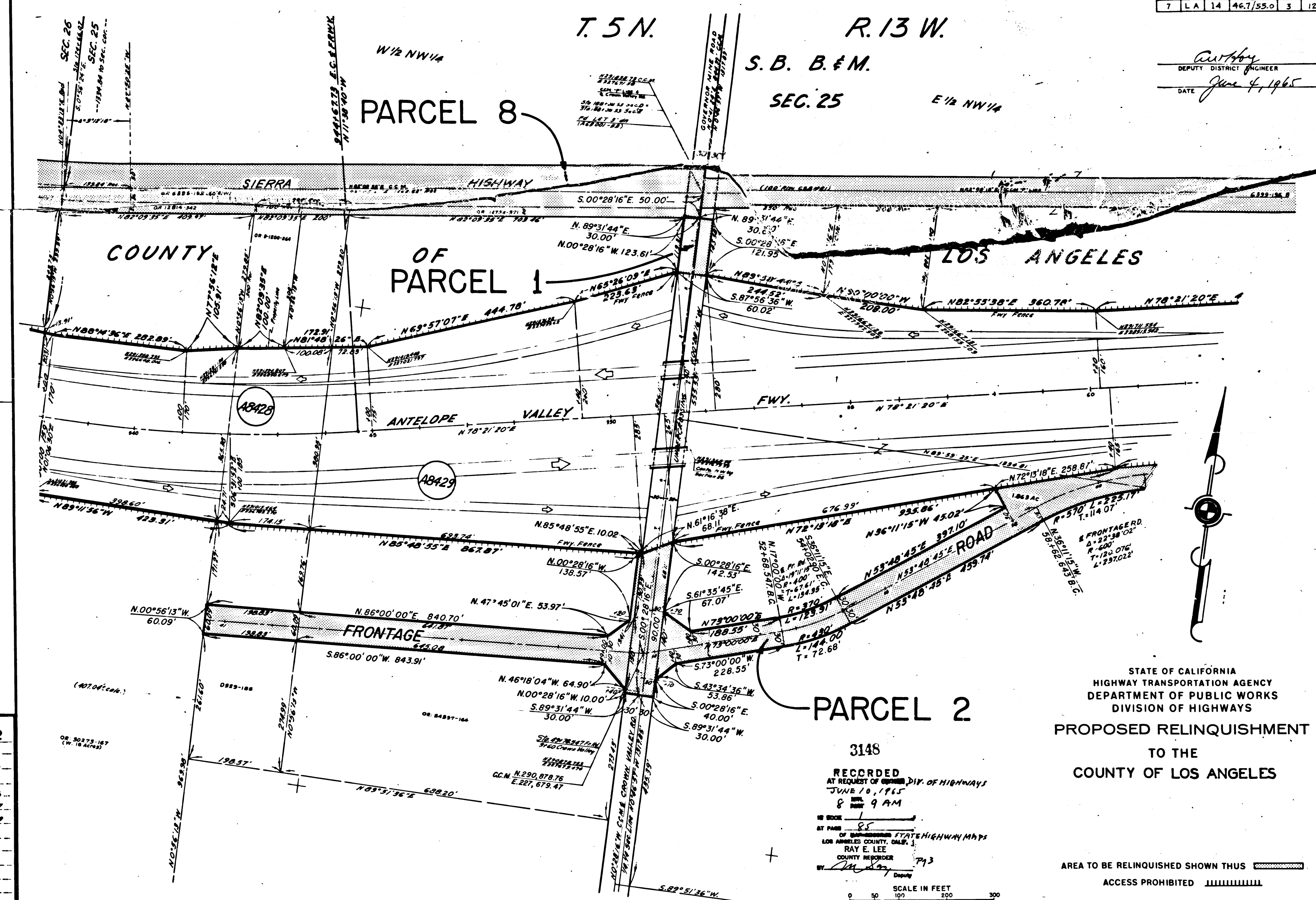
STATE OF CALIFORNIA  
 HIGHWAY TRANSPORTATION AGENCY  
 DEPARTMENT OF PUBLIC WORKS  
 DIVISION OF HIGHWAYS

PROPOSED RELINQUISHMENT  
 TO THE  
 COUNTY OF LOS ANGELES

AREA TO BE RELINQUISHED SHOWN THUS

ACCESS PROHIBITED

SCALE IN FEET  
 0 50 100 200 300

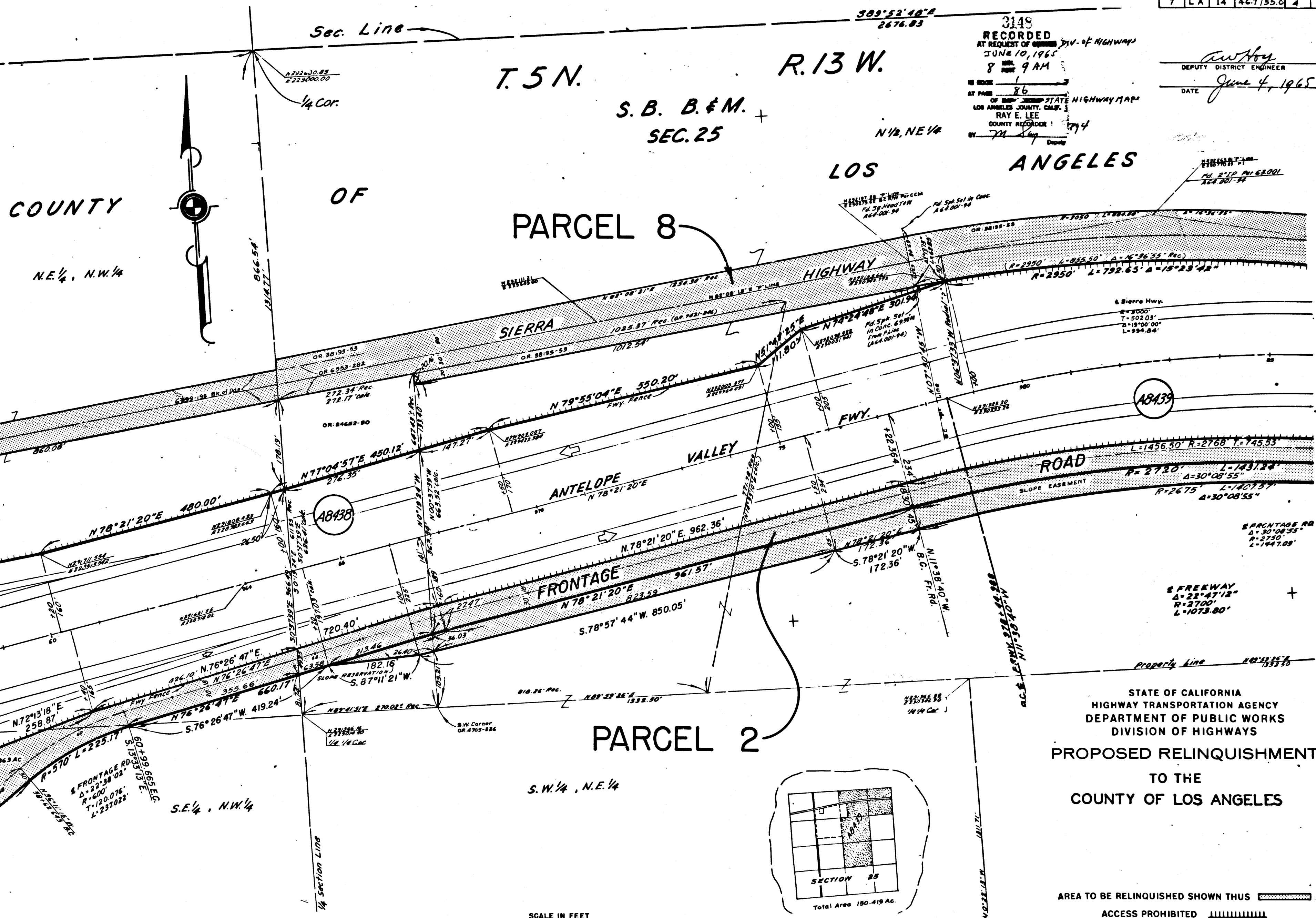


REL-362  
 DRN BY W.F.S.  
 C'LC BY J.W.H.  
 CK'D BY H.S.L.  
 BASE MAP NO'S  
 E-1066 E-1067  
 E-1068 E-1069  
 REF. MAP NO'S  
 AS BUILT NO'S  
 154-11

3148  
 RECORDED  
 AT REQUEST OF COUNTY DIV. OF HIGHWAYS  
 JUNE 10, 1965  
 8 AM  
 9 AM  
 OF SAN FRANCISCO STATE HIGHWAY MAPS  
 LOS ANGELES COUNTY, CALIF.  
 RAY E. LEE  
 COUNTY RECORDER  
 BY [Signature] Deputy

STATE OF CALIFORNIA  
 HIGHWAY TRANSPORTATION AGENCY  
 DEPARTMENT OF PUBLIC WORKS  
 DIVISION OF HIGHWAYS  
 PROPOSED RELINQUISHMENT  
 TO THE  
 COUNTY OF LOS ANGELES  
 AREA TO BE RELINQUISHED SHOWN THUS [Hatched Pattern]  
 ACCESS PROHIBITED [Hatched Pattern]



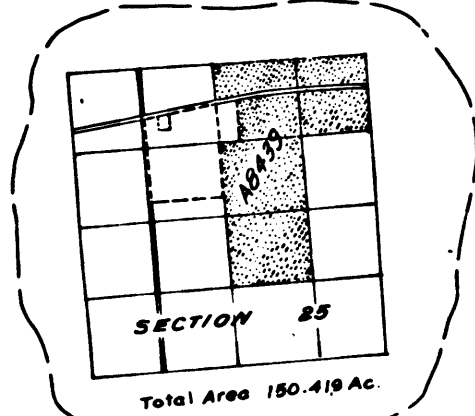


3149  
 RECORDED  
 AT REQUEST OF DIV. OF HIGHWAYS  
 JUNE 10, 1965  
 8 9 AM  
 COUNTY RECORDER  
 RAY E. LEE  
 COUNTY RECORDER 1

DEPUTY DISTRICT ENGINEER  
 DATE June 4, 1965

REL-362  
 DYN BY W.F.S.  
 C.L.C. BY J.W.H.  
 CKD BY HSL  
 BASE MAP NOS  
 F-1066 F-1067  
 F-1068 F-1069  
 REF. MAP NOS  
 AS BUILT NOS  
 154-11

SCALE IN FEET  
 0 50 100 200 300

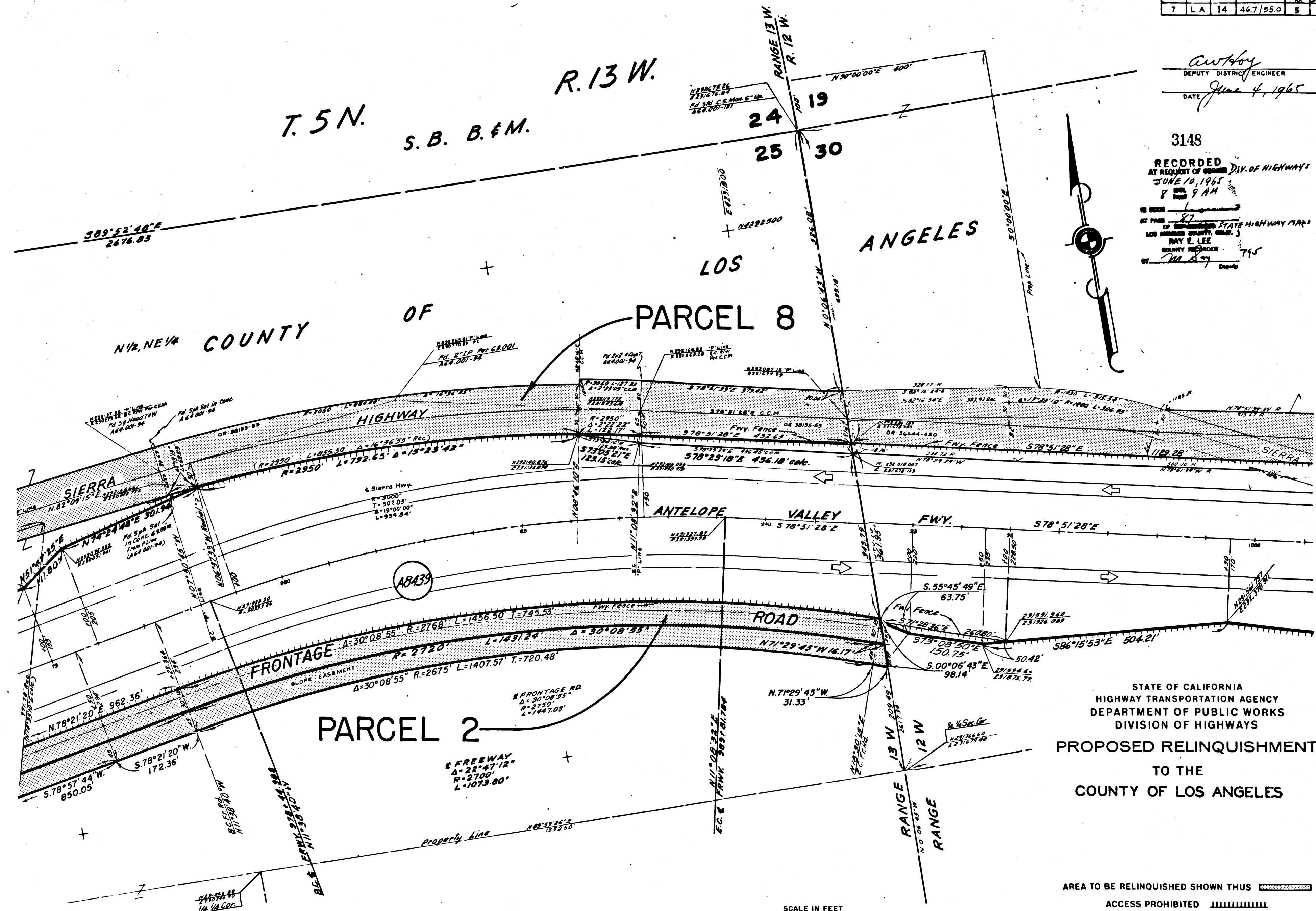
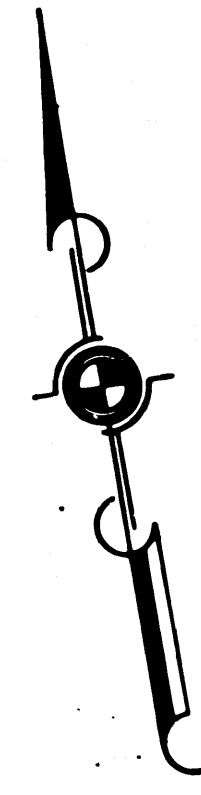


STATE OF CALIFORNIA  
 HIGHWAY TRANSPORTATION AGENCY  
 DEPARTMENT OF PUBLIC WORKS  
 DIVISION OF HIGHWAYS  
 PROPOSED RELINQUISHMENT  
 TO THE  
 COUNTY OF LOS ANGELES

AREA TO BE RELINQUISHED SHOWN THUS  
 ACCESS PROHIBITED

*Anthony*  
 DEPUTY DISTRICT ENGINEER  
 DATE *June 4, 1965*

3148  
 RECORDED  
 AT REQUEST OF *State* DIV. OF HIGHWAYS  
 JUNE 10, 1965  
 8 9 AM  
 BY *Ray E. Lee*  
 COUNTY RECORDER



STATE OF CALIFORNIA  
 HIGHWAY TRANSPORTATION AGENCY  
 DEPARTMENT OF PUBLIC WORKS  
 DIVISION OF HIGHWAYS  
 PROPOSED RELINQUISHMENT  
 TO THE  
 COUNTY OF LOS ANGELES

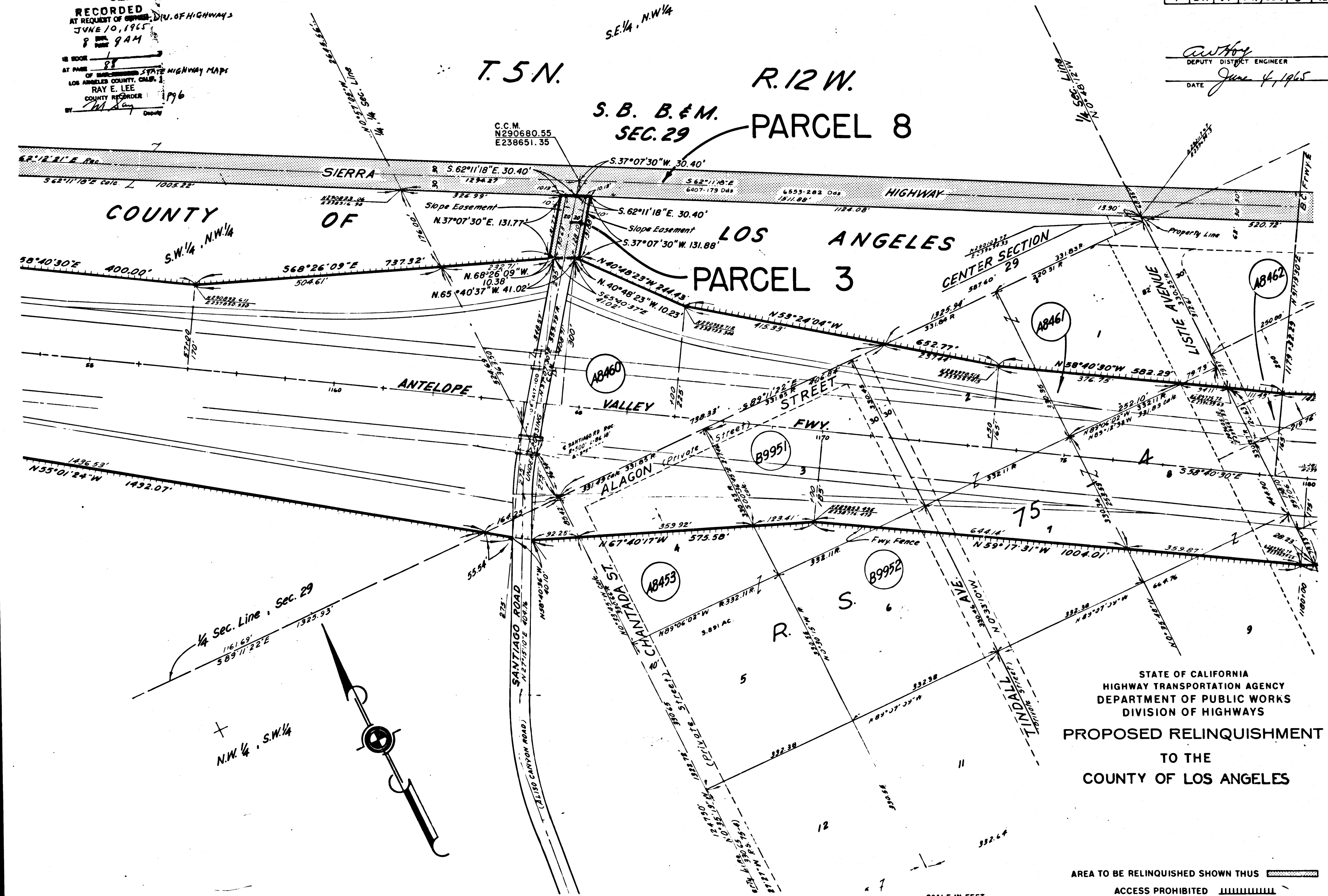
AREA TO BE RELINQUISHED SHOWN THUS ACCESS PROHIBITED



REL-362  
 DTM BY W.F.S.  
 C.L.C. BY J.W.H.  
 C&D BY H.S.L.  
 BASE MAP NO'S  
 L-1066 F-1067  
 L-1068 F-1069  
 REF. MAP NO'S  
 AS BUILT NO'S  
 154-11

3148  
 RECORDED  
 AT REQUEST OF ENGINEER, DIV. OF HIGHWAYS  
 JUNE 10, 1965  
 8 PAGES 9 AM  
 IS BOOK 88  
 AT PAGE 88  
 OF SAN FRANCISCO STATE HIGHWAY MAPS  
 LOS ANGELES COUNTY, CALIF.  
 RAY E. LEE  
 COUNTY RECORDER  
 196

*Anthony*  
 DEPUTY DISTRICT ENGINEER  
 DATE June 4, 1965



REL-362  
 DWN BY W.F.S.  
 C'LC BY J.W.H.  
 CK'D BY H.L.  
 BASE MAP NOS.  
 F-1066 F-1067  
 F-1068 F-1069  
 REF. MAP NOS.  
 AS BUILT NO'S.  
 154-11

STATE OF CALIFORNIA  
 HIGHWAY TRANSPORTATION AGENCY  
 DEPARTMENT OF PUBLIC WORKS  
 DIVISION OF HIGHWAYS  
 PROPOSED RELINQUISHMENT  
 TO THE  
 COUNTY OF LOS ANGELES

AREA TO BE RELINQUISHED SHOWN THUS [hatched pattern]  
 ACCESS PROHIBITED [dashed line pattern]

SCALE IN FEET  
 0 50 100 200 300

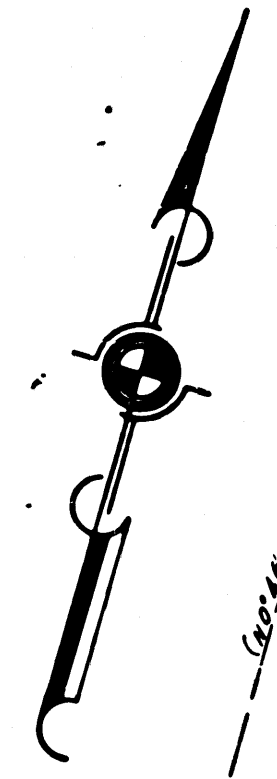
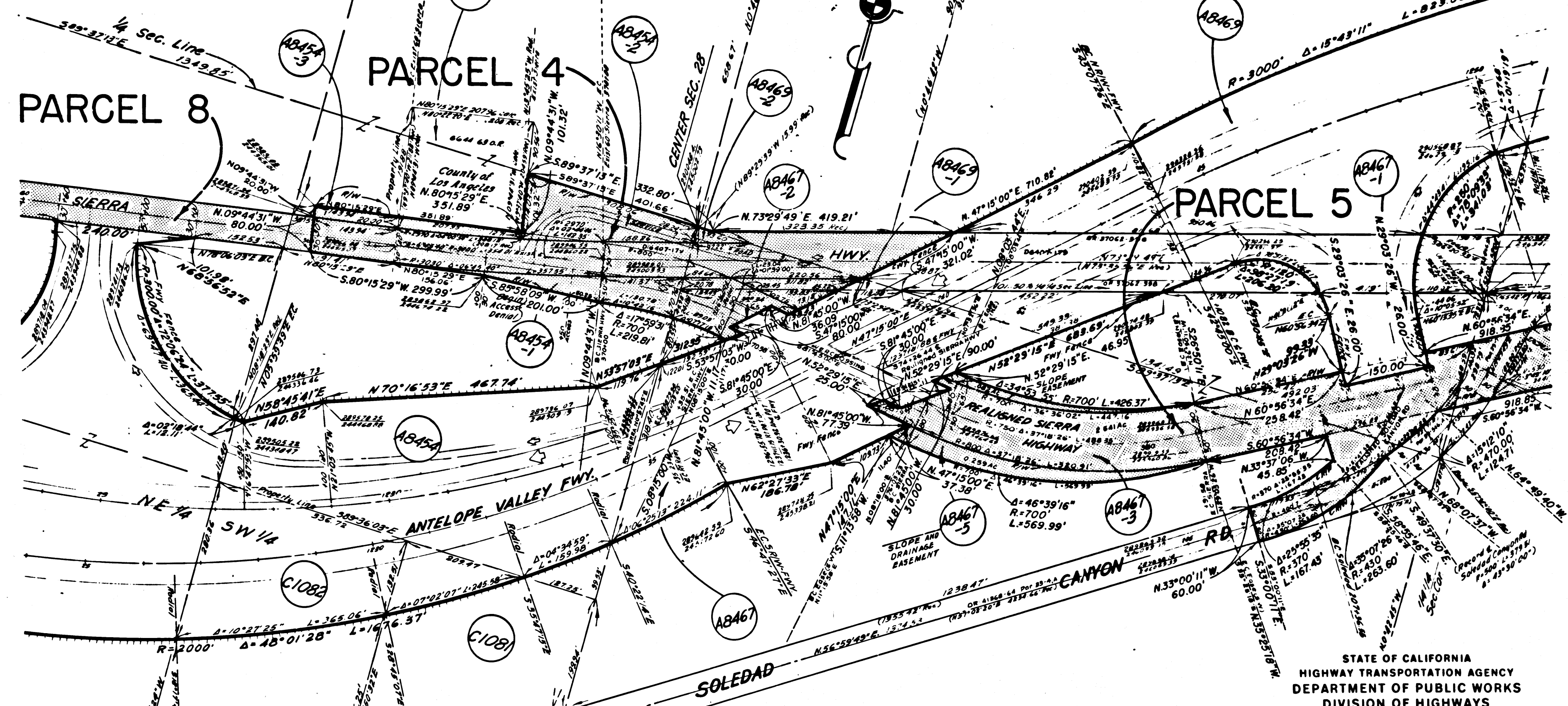


BOOK 1 PAGE 29				
DIST.	COUNTY	ROUTE	POST MILES	SHEET TOTAL SHEETS
7	LA	14	46.7/55.0	7 12

T. 5 N. 1  
R. 12 W.  
S. B. B. & M. SEC. 28

COUNTY OF LOS ANGELES

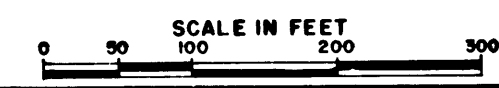
*Ray E. Lee*  
DEPUTY DISTRICT ENGINEER  
DATE *June 4, 1965*



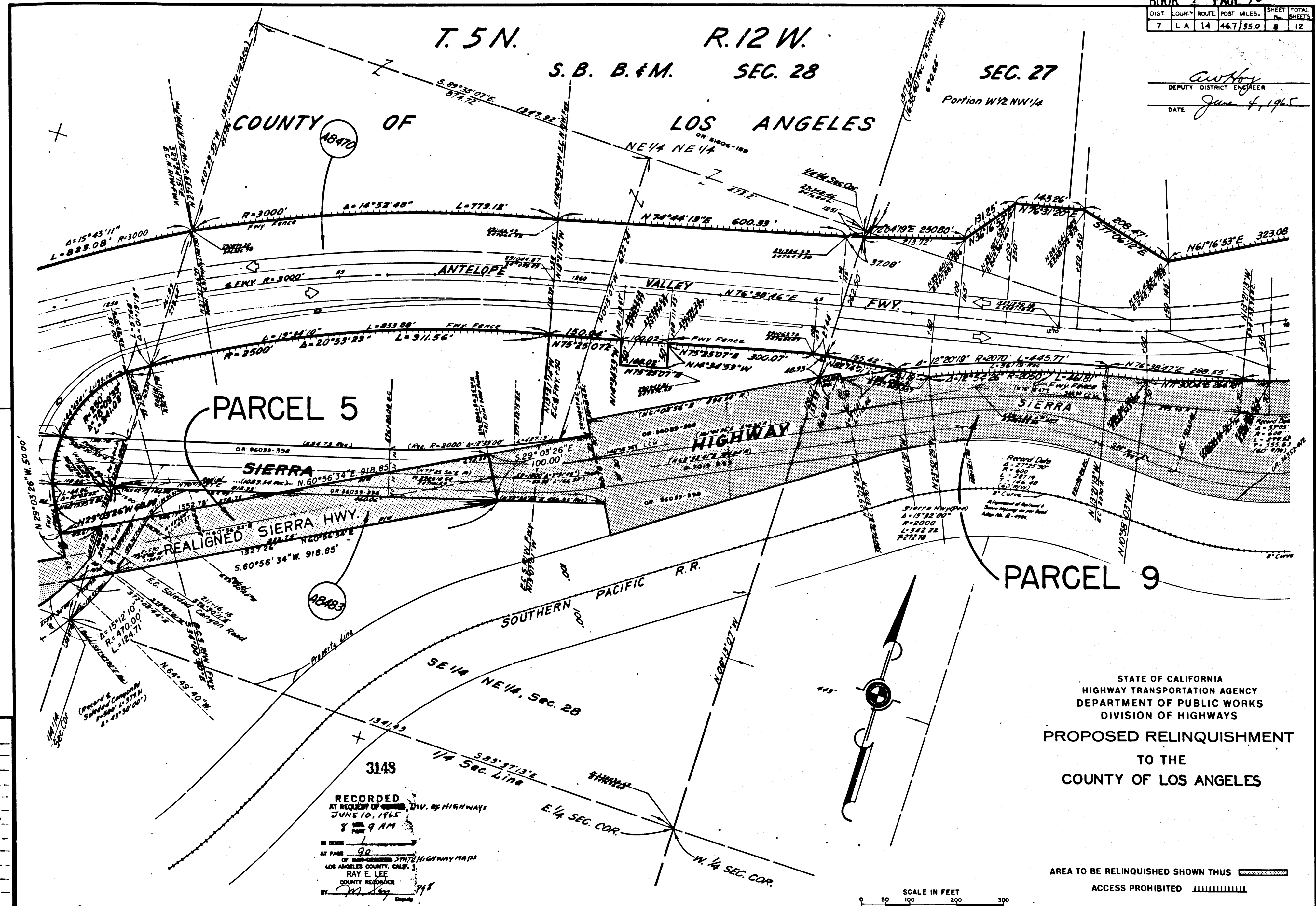
REL-362  
 DRN BY W.E.S.  
 C.L.C BY J.W.H.  
 CK'D BY HSL  
 BASE MAP NO'S  
 F-1065 F-1067  
 F-1068 F-1069  
 REF. MAP NO'S  
 AS BUILT NO'S  
 154-11

3148  
 RECORDED  
 AT REQUEST OF DIV. OF HIGHWAYS  
 JUNE 10, 1965  
 8 AM  
 9 AM  
 IN BOOK 1  
 AT PAGE 29  
 OF HIGHWAY STATE HIGHWAY MAPS  
 LOS ANGELES COUNTY, CALIF.  
 RAY E. LEE  
 COUNTY RECORDER  
 BY *Ray E. Lee* Deputy P97

STATE OF CALIFORNIA  
 HIGHWAY TRANSPORTATION AGENCY  
 DEPARTMENT OF PUBLIC WORKS  
 DIVISION OF HIGHWAYS  
 PROPOSED RELINQUISHMENT  
 TO THE  
 COUNTY OF LOS ANGELES



AREA TO BE RELINQUISHED SHOWN THUS [hatched pattern]  
 ACCESS PROHIBITED [hatched pattern]



T. 5 N. R. 12 W. S. B. B. & M. SEC. 28 SEC. 27

COUNTY OF LOS ANGELES

Portion W 1/2 NW 1/4

DEPUTY DISTRICT ENGINEER  
*Anthony*  
 DATE June 4, 1965

PARCEL 5

PARCEL 9

STATE OF CALIFORNIA  
 HIGHWAY TRANSPORTATION AGENCY  
 DEPARTMENT OF PUBLIC WORKS  
 DIVISION OF HIGHWAYS

PROPOSED RELINQUISHMENT  
 TO THE  
 COUNTY OF LOS ANGELES

REL-362  
 DWN BY W.E.S.  
 C'LC BY J.W.H.  
 CKD BY H.S.L.  
 BASE MAP NOS.  
 F-1066 F-1067  
 F-1068 F-1069  
 REF. MAP NOS.  
 AS BUILT NOS.  
 154-11

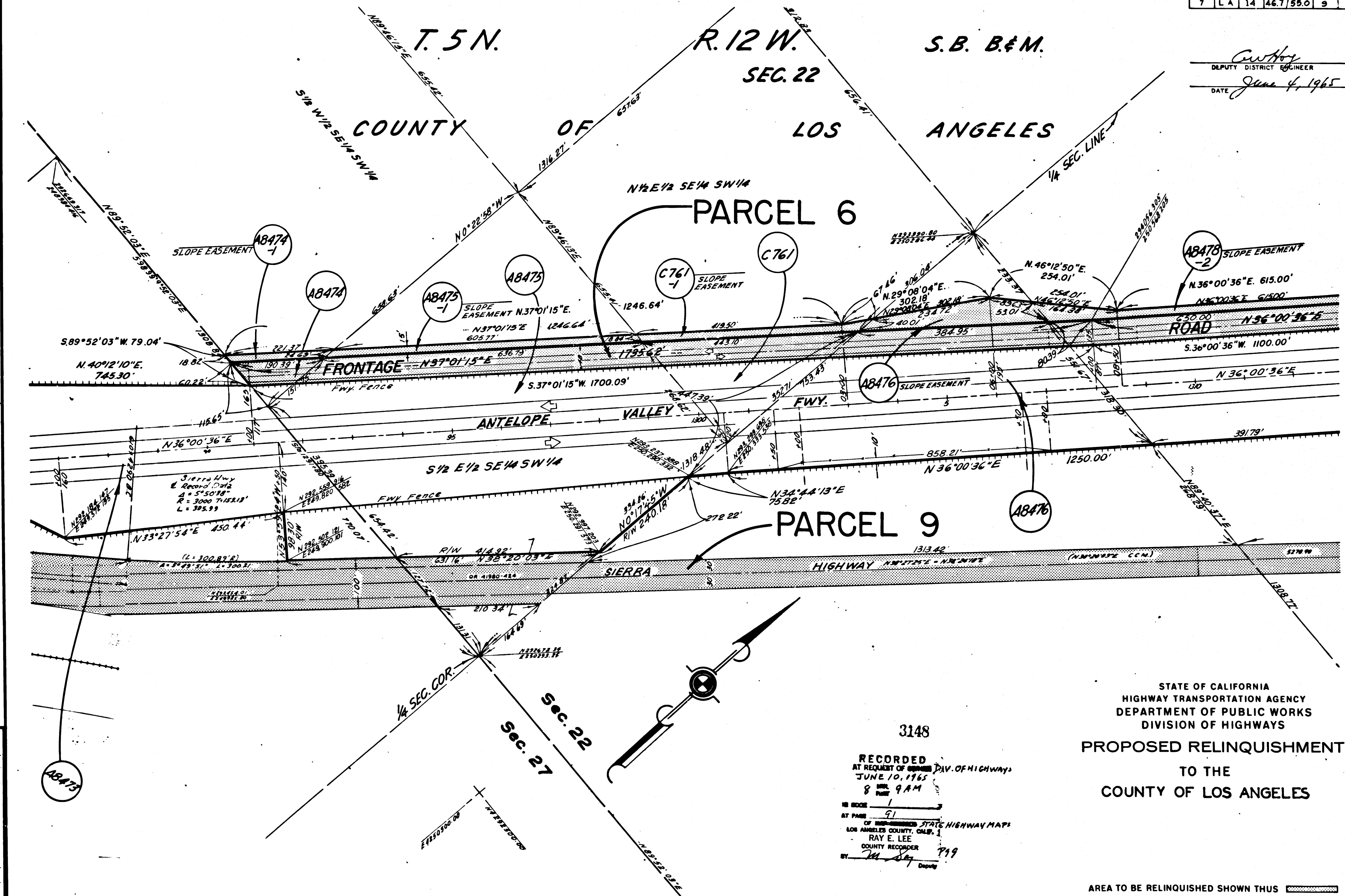
RECORDED  
 AT REQUEST OF DIV. OF HIGHWAYS  
 JUNE 10, 1965  
 8 AM  
 9 AM

RAY E. LEE  
 COUNTY RECORDER

AREA TO BE RELINQUISHED SHOWN THUS ACCESS PROHIBITED



BOOK L PAGE 91		SHEET TOTAL			
DIST.	COUNTY	ROUTE	POST MILES.	SHEET No.	TOTAL SHEETS
7	LA	14	46.7/59.0	9	12



*C. W. Hoyle*  
 DEPUTY DISTRICT ENGINEER  
 DATE June 4, 1965

REL-362  
 DWN BY W.F.S.  
 CLC BY J.W.S.  
 CK'D BY HSL  
 BASE MAP NOS.  
 E-1066 F-1067  
 E-1068 F-1069  
 REF. MAP NOS.  
 AS BUILT NOS.  
 154-11

3148  
 RECORDED  
 AT REQUEST OF DIV. OF HIGHWAYS  
 JUNE 10, 1965  
 8 00 AM  
 RAY E. LEE  
 COUNTY RECORDER  
 BY *J. M. Day* Deputy

STATE OF CALIFORNIA  
 HIGHWAY TRANSPORTATION AGENCY  
 DEPARTMENT OF PUBLIC WORKS  
 DIVISION OF HIGHWAYS  
 PROPOSED RELINQUISHMENT  
 TO THE  
 COUNTY OF LOS ANGELES

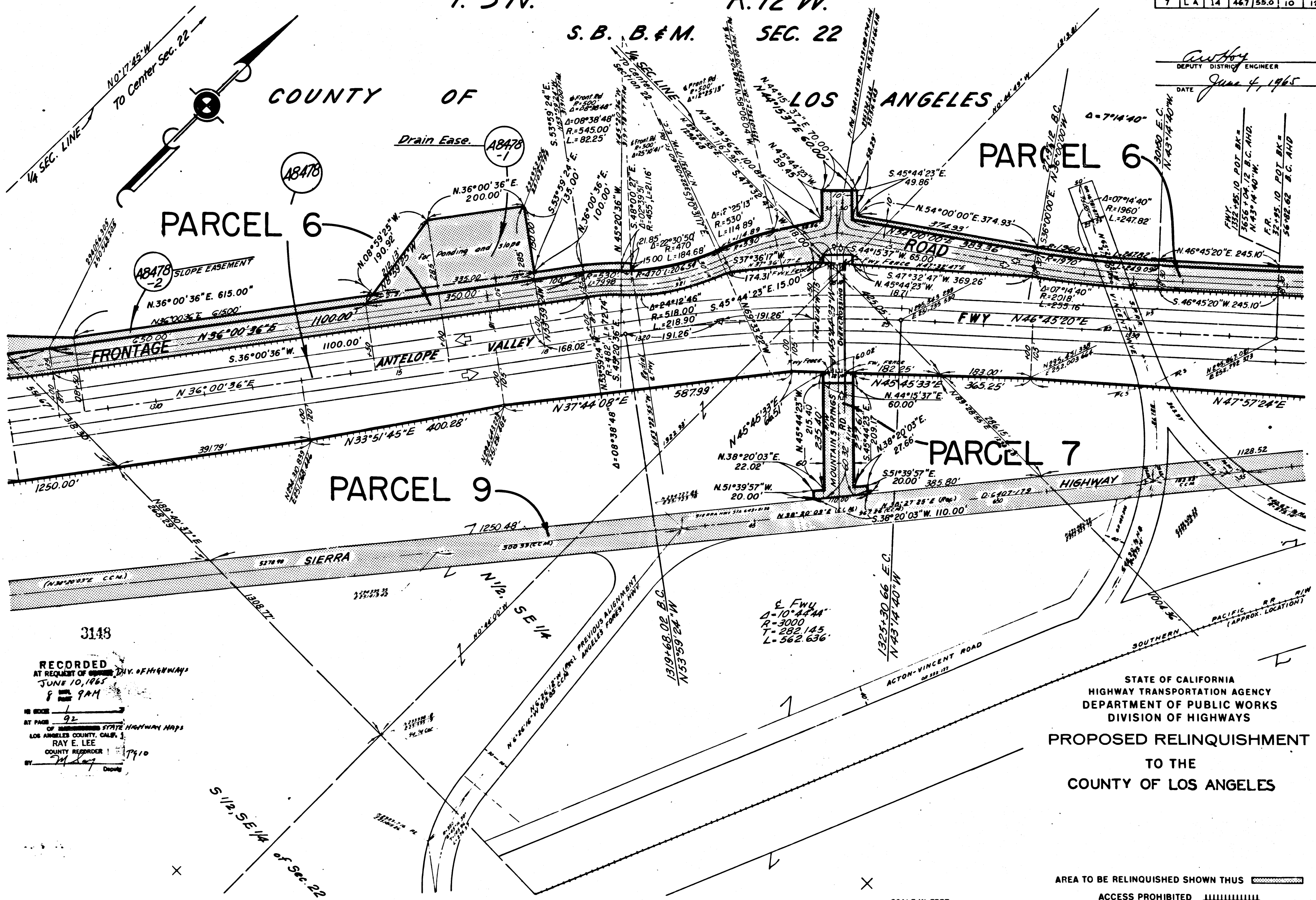


AREA TO BE RELINQUISHED SHOWN THUS [hatched pattern]  
 ACCESS PROHIBITED [hatched pattern]

T. 5 N. R. 12 W.  
 S. B. B. & M. SEC. 22

COUNTY OF LOS ANGELES

Deputy District Engineer  
 DATE June 4, 1965



RECORDED  
 AT REQUEST OF DIV. OF HIGHWAYS  
 JUNE 10, 1965  
 8 9AM

AT PAGE 92  
 OF REVISIONS STATE HIGHWAY MAPS  
 LOS ANGELES COUNTY, CALIF. 1  
 RAY E. LEE  
 COUNTY RECORDER  
 7910

REL-362  
 DRN BY W.E.S.  
 C.L.C. BY J.W.H.  
 CK'D BY H.S.L.  
 BASE MAP NOS.  
 F-1065  
 F-1066 F-1067  
 F-1068 F-1069  
 REF. MAP NOS.  
 AS BUILT NO'S  
 154-11

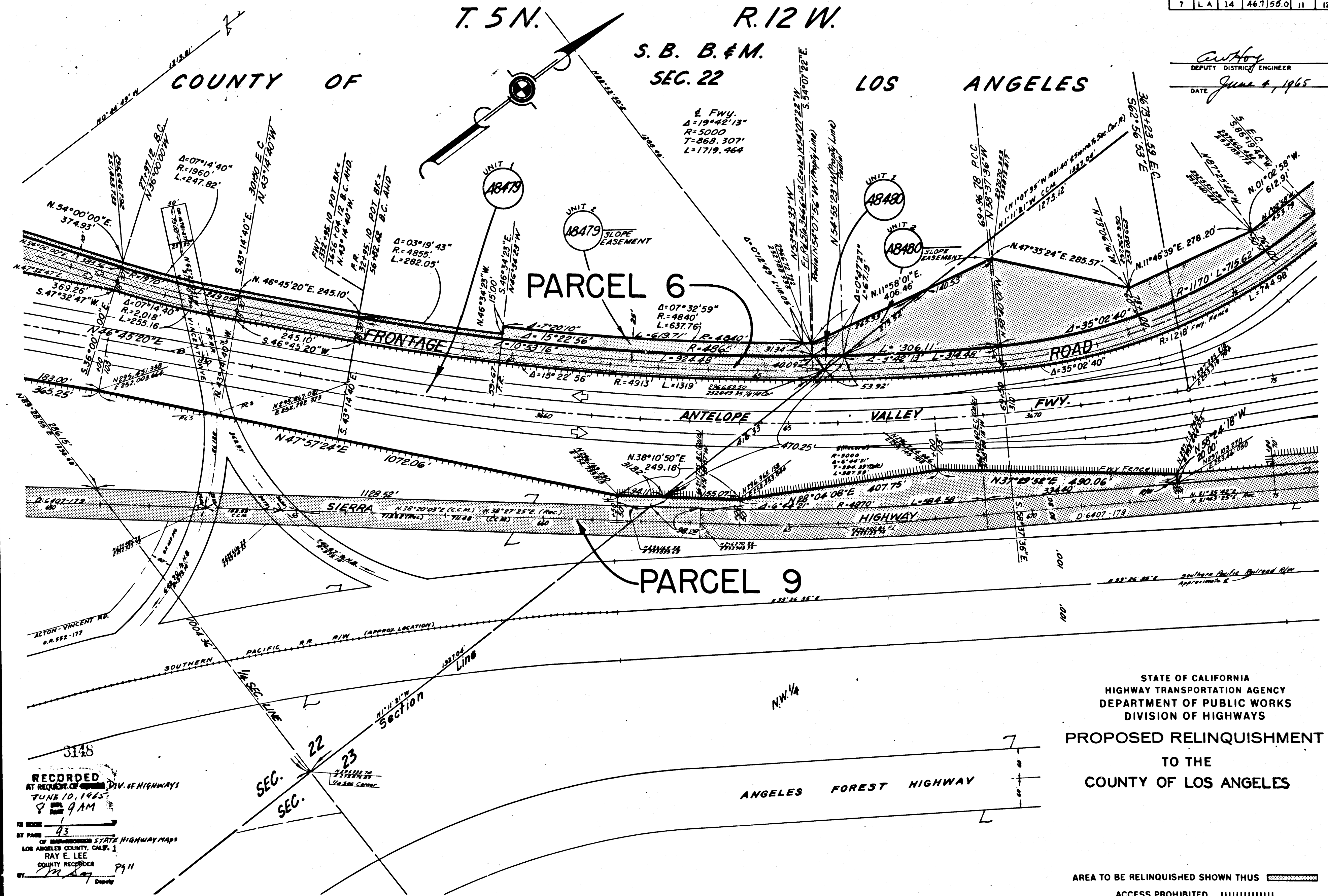
STATE OF CALIFORNIA  
 HIGHWAY TRANSPORTATION AGENCY  
 DEPARTMENT OF PUBLIC WORKS  
 DIVISION OF HIGHWAYS  
 PROPOSED RELINQUISHMENT  
 TO THE  
 COUNTY OF LOS ANGELES

AREA TO BE RELINQUISHED SHOWN THUS [Hatched Pattern]  
 ACCESS PROHIBITED [Dashed Line]

SCALE IN FEET  
 0 50 100 200 300

T. 5 N. R. 12 W.  
 S. B. B. & M.  
 SEC. 22 LOS ANGELES COUNTY OF

*Anthony*  
 DEPUTY DISTRICT ENGINEER  
 DATE June 4, 1965



REL-362  
 DRYN BY W.E.S.  
 C.L.C. BY J.W.H.  
 CKD BY H.E.L.  
 BASE MAP NOS.  
 F-1065 F-1067  
 F-1066 F-1068  
 F-1069 F-1069  
 REF. MAP NOS.  
 AS BUILT NO'S.  
 154-11

RECORDED  
 AT REQUEST OF DIV. OF HIGHWAYS  
 JUNE 10, 1965  
 9 AM  
 93  
 OF UNRECORDED STATE HIGHWAY MAPS  
 LOS ANGELES COUNTY, CALIF.  
 RAY E. LEE  
 COUNTY RECORDER  
 P. 11

STATE OF CALIFORNIA  
 HIGHWAY TRANSPORTATION AGENCY  
 DEPARTMENT OF PUBLIC WORKS  
 DIVISION OF HIGHWAYS  
 PROPOSED RELINQUISHMENT  
 TO THE  
 COUNTY OF LOS ANGELES

SCALE IN FEET  
 0 50 100 200 300

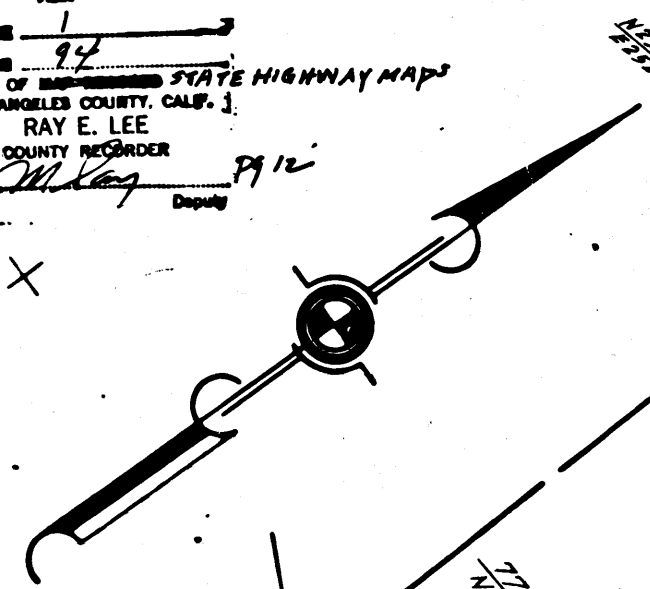
AREA TO BE RELINQUISHED SHOWN THUS [hatched pattern]  
 ACCESS PROHIBITED [cross-hatched pattern]



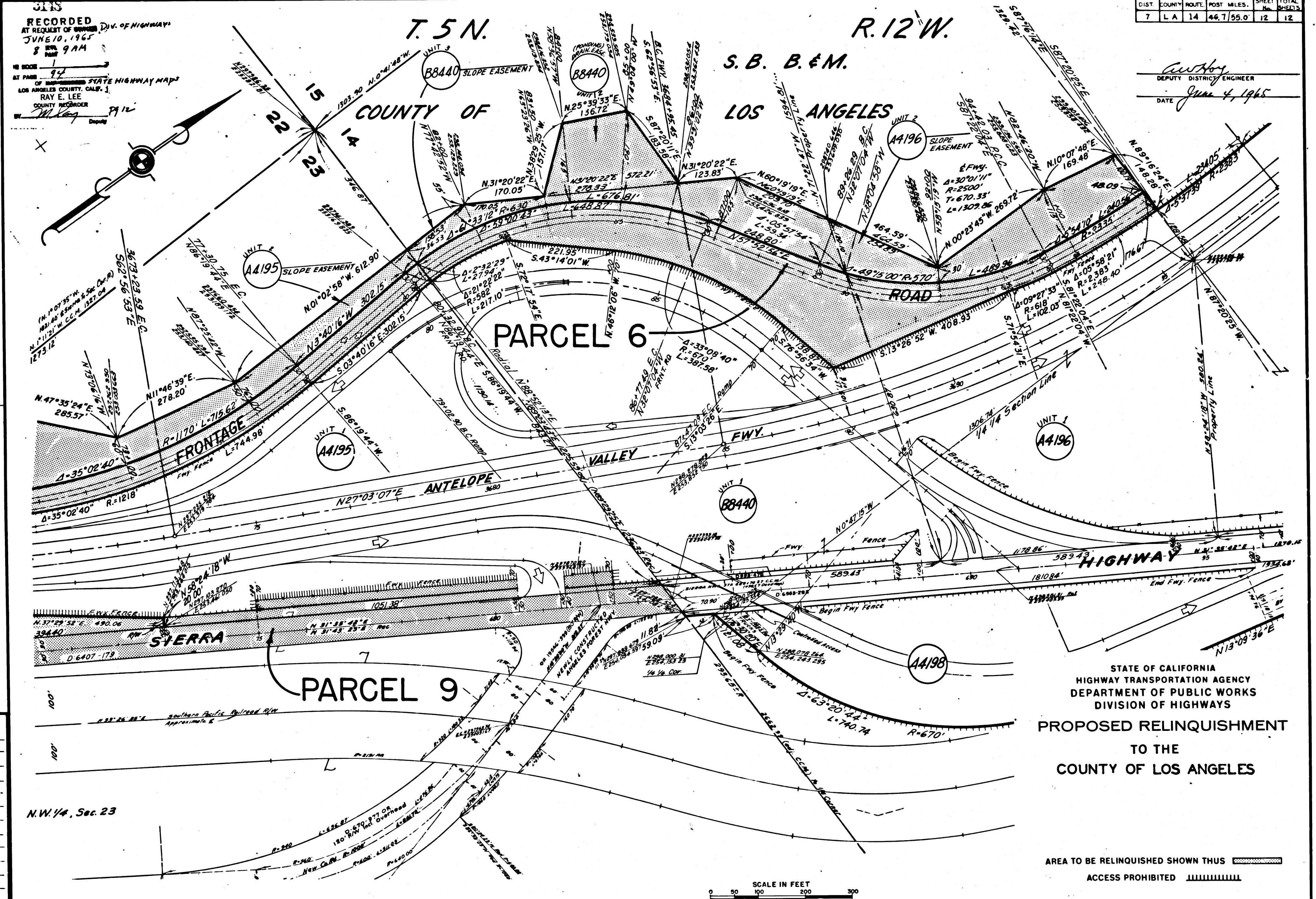
DIST	COUNTY	ROUTE	POST MILES	SHEET No.	TOTAL SHEETS
7	L.A.	14	46.755.0	12	12

RECORDED  
AT REQUEST OF STATE DIV. OF HIGHWAY  
JUNE 10, 1965  
8 AM  
9 AM

NO. BOOK 1  
AT PAGE 94  
OF REPRODUCED STATE HIGHWAY MAPS  
LOS ANGELES COUNTY, CALIF. 1  
RAY E. LEE  
COUNTY RECORDER  
M. Kay



*Anthony*  
DEPUTY DISTRICT ENGINEER  
DATE June 4, 1965



REL-362  
DRN BY W.F.S.  
C/LC BY J.W.H.  
CHKD BY H.S.L.  
BASE MAP NOS.  
E-1066 F-1067  
E-1068 F-1069  
REF. MAP NOS.  
AS BUILT NOS.  
154-11

N.W. 1/4, Sec. 23

STATE OF CALIFORNIA  
HIGHWAY TRANSPORTATION AGENCY  
DEPARTMENT OF PUBLIC WORKS  
DIVISION OF HIGHWAYS  
PROPOSED RELINQUISHMENT  
TO THE  
COUNTY OF LOS ANGELES

AREA TO BE RELINQUISHED SHOWN THUS [hatched box]  
ACCESS PROHIBITED [dashed line]

SCALE IN FEET  
0 50 100 200 300