

STATE OF CALIFORNIA
 HIGHWAY TRANSPORTATION AGENCY
 DEPARTMENT OF PUBLIC WORKS
 DIVISION OF HIGHWAYS

RIGHT OF WAY MAP OF
STATE HIGHWAY

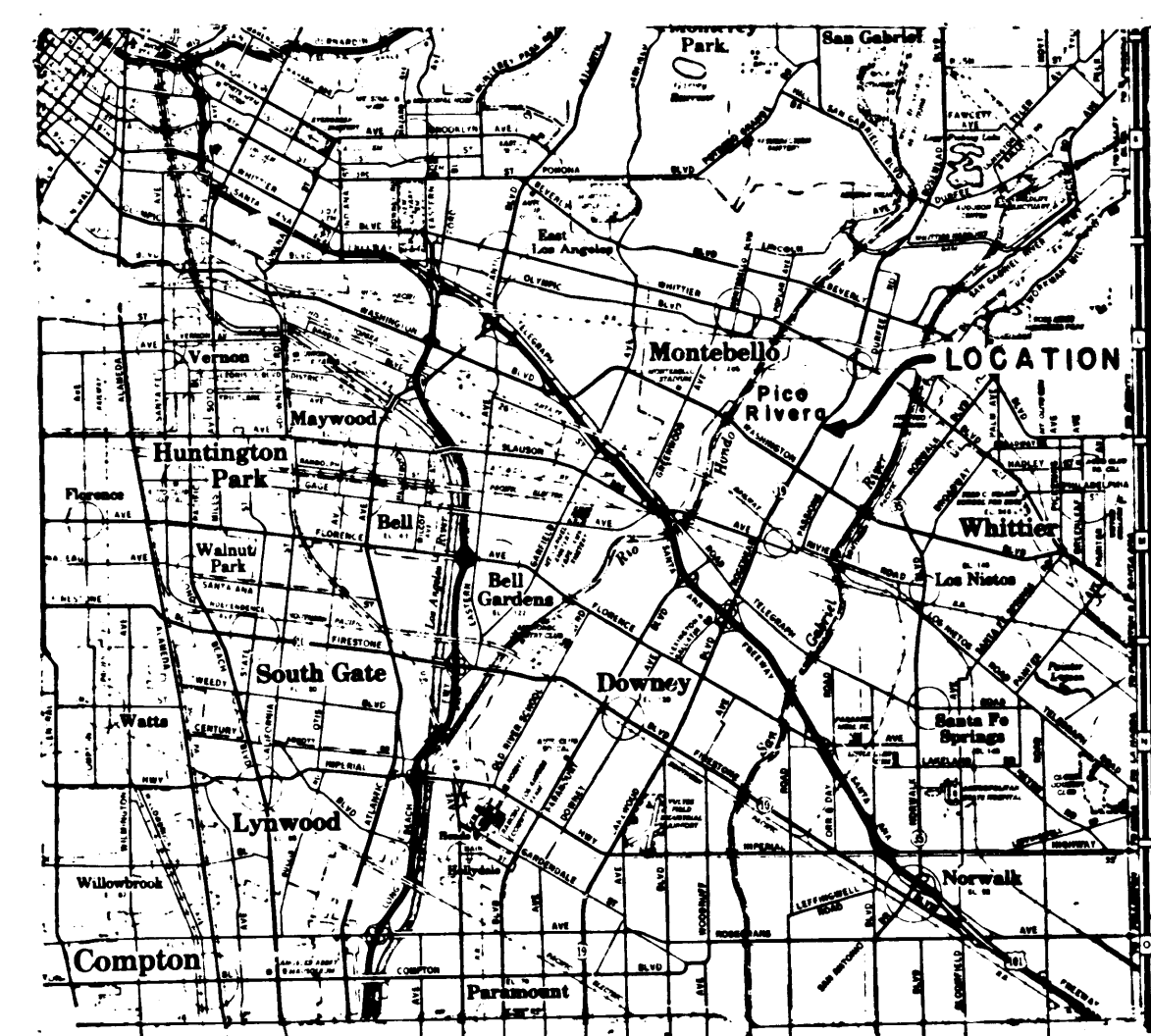
In Los Angeles County At 2.5 Miles Northeast
 of Santa Ana Freeway in the City of Pico
 Rivera

BOOK		PAGE 95	
DIST	COUNTY	ROUTE	POST MILES
7	LA	19	14.6
SHEET No.			TOTAL SHEETS
1			1

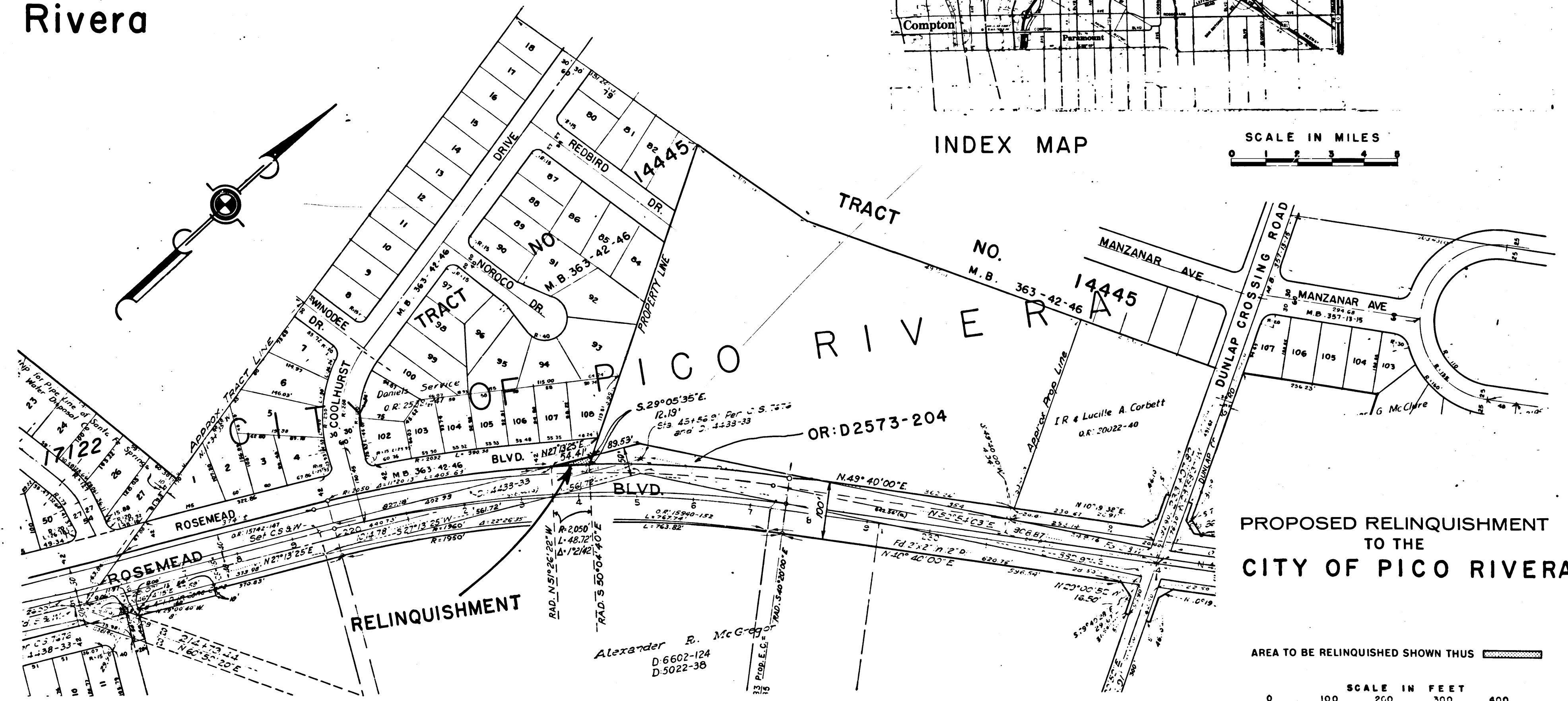
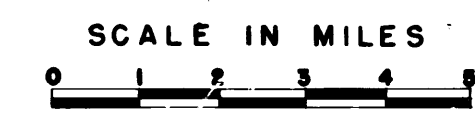
R. E. Dellebach
 DEPUTY DISTRICT ENGINEER
 June 30, 1965
 DATE

2466

RECORDED
 AT REQUEST OF DIV. OF HIGHWAYS
 JULY 6, 1965
 50 MIN. 8 AM
 ON BOOK 95
 AT PAGE 95
 OF STATE HIGHWAY MAP
 LOS ANGELES COUNTY, CALIF.
 RAY E. LEE
 COUNTY RECORDER
 BY *M. J. [Signature]* Deputy **FREE**

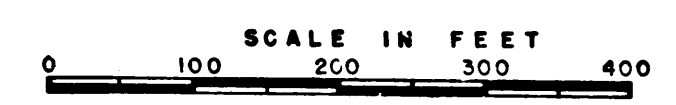


INDEX MAP



PROPOSED RELINQUISHMENT
 TO THE
CITY OF PICO RIVERA

AREA TO BE RELINQUISHED SHOWN THUS



REL-427
 DRYN BY BJK
 C.L.C. BY TK
 CKD BY JD
 BASE MAP NO'S
 P25674
 REF. MAP NO'S
 AS BUILT NO'S

Alexander R. McG...
 D.6602-124
 D.5022-38