

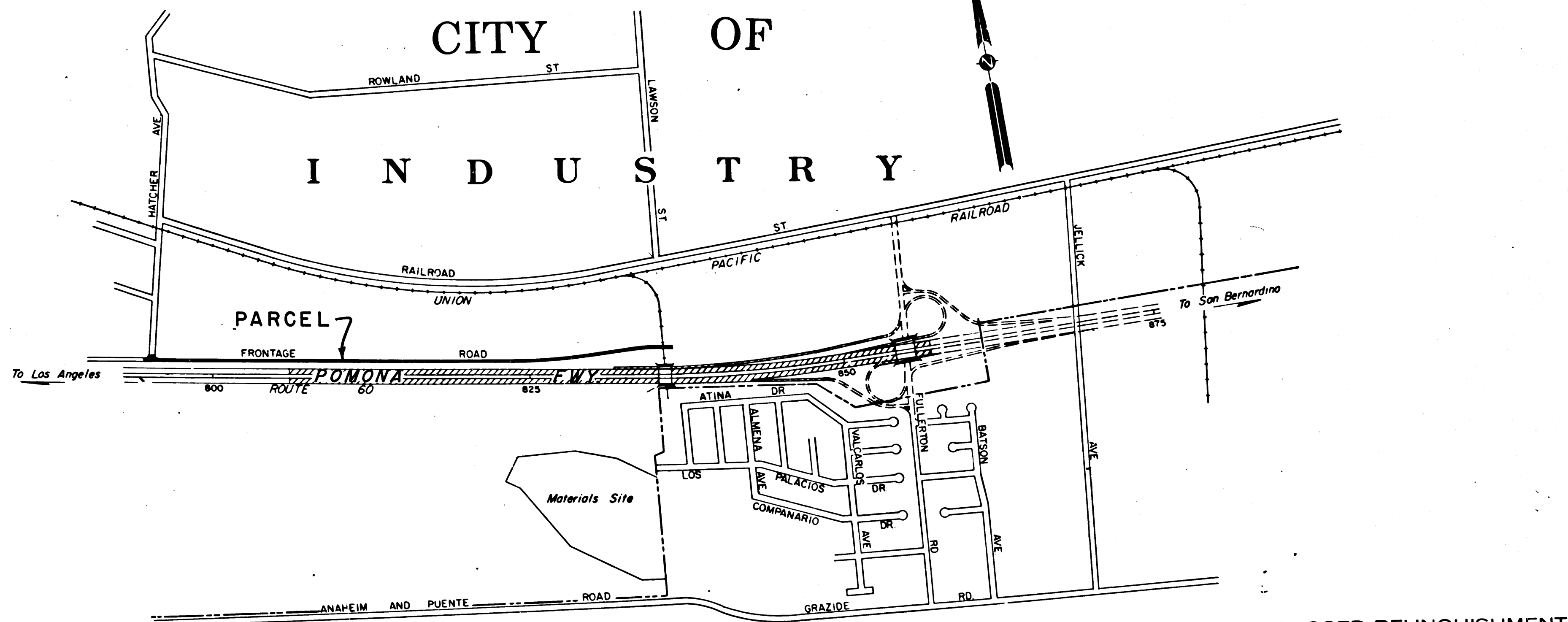
DIST	COUNTY	ROUTE	POST MILES	SHEET No.	TOTAL SHEETS
7	L.A.	60	18.4 / 19.2	1	3

STATE OF CALIFORNIA  
 HIGHWAY TRANSPORTATION AGENCY  
 DEPARTMENT OF PUBLIC WORKS  
 DIVISION OF HIGHWAYS

RIGHT OF WAY MAPS OF  
**STATE HIGHWAY**  
 In Los Angeles County in and near Industry  
 between Hatcher Avenue and Jellick Avenue

*Authoy*  
 DEPUTY DISTRICT ENGINEER  
 SEPTEMBER 14-1965  
 DATE

2323  
 RECORDED  
 AT REQUEST OF DEPT. OF PUBLIC WORKS  
 SEPT 20 AM 1965  
 7 08:29 AM  
 IN BOOK 1  
 AT PAGE 98  
 OF UNRECORDED STATE HWY. MAPS  
 LOS ANGELES COUNTY, CALIF.  
 RAY E. LEE  
 COUNTY RECORDER  
 BY *CKM* FREE



PROPOSED RELINQUISHMENT

SCALE



REL-433

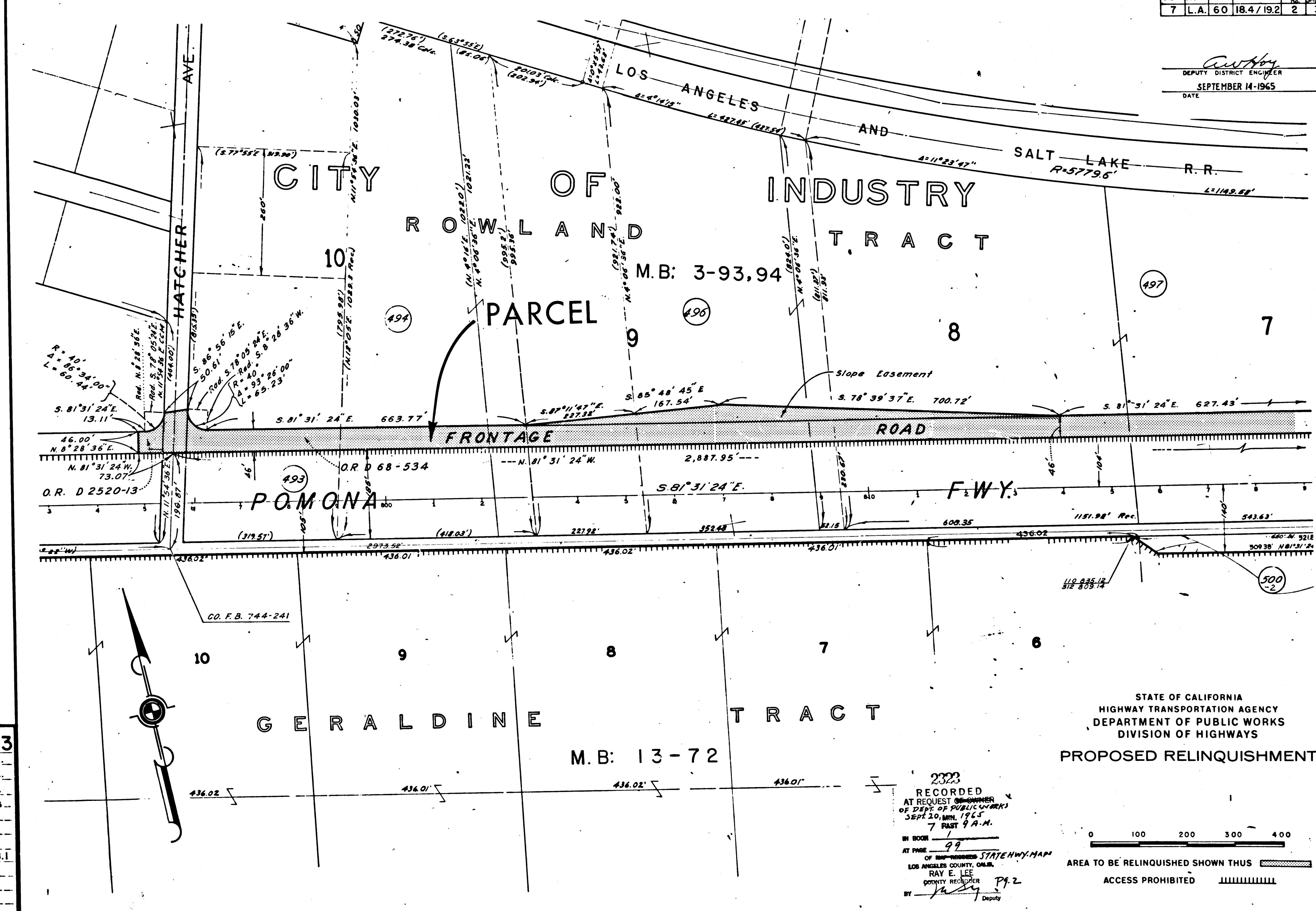
DRN BY R.K.  
 C'LC BY R.K.  
 CK'D BY J.D.  
 BASE MAP NO'S  
 F-1790

REF. MAP NO'S  
 C.C.M. 218.1

AS BUILT NO'S  
 166-5

DIST.	COUNTY	ROUTE	POST MILES	SHEET No.	TOTAL SHEETS
7	L.A.	60	18.4/19.2	2	3

*C. W. H. H.*  
 DEPUTY DISTRICT ENGINEER  
 SEPTEMBER 14-1965  
 DATE



SEE SHEET 3

**REL-433**  
 DWN BY R. K.  
 C'LC BY R. K.  
 CK'D BY J. D.  
 BASE MAP NOS  
 F-1790  
 REF. MAP NOS  
 C.C.M. 218.1  
 AS BUILT NOS  
 166-5

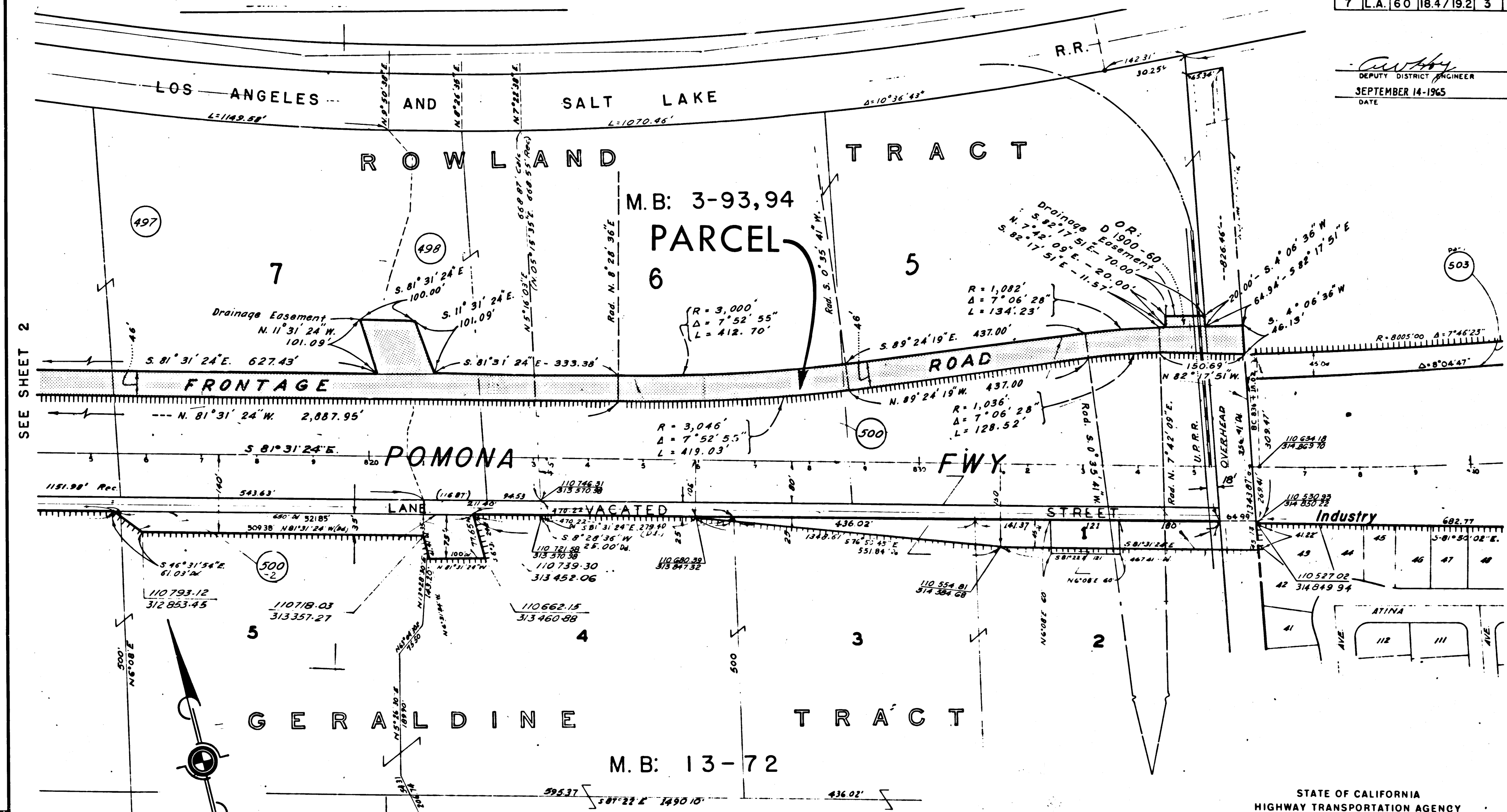
2323  
 RECORDED  
 AT REQUEST OF OWNER  
 OF DEPT. OF PUBLIC WORKS  
 SEPT. 20, MIN. 1965  
 7 PAST 9 A.M.  
 IN BOOK 1  
 AT PAGE 99  
 OF MAP-REGISTERED STATE HWY. MAP  
 LOS ANGELES COUNTY, CALIF.  
 RAY E. LEE  
 COUNTY RECORDER  
 BY *[Signature]* Deputy

STATE OF CALIFORNIA  
 HIGHWAY TRANSPORTATION AGENCY  
 DEPARTMENT OF PUBLIC WORKS  
 DIVISION OF HIGHWAYS  
**PROPOSED RELINQUISHMENT**

0 100 200 300 400  
 AREA TO BE RELINQUISHED SHOWN THUS ACCESS PROHIBITED

DIST	COUNTY	ROUTE	POST MILES	SHEET No.	TOTAL SHEETS
7	L.A.	60	18.4/19.2	3	3

*Carthy*  
 DEPUTY DISTRICT ENGINEER  
 SEPTEMBER 14-1965  
 DATE



SEE SHEET 2

**REL-433**  
 DRN' BY R. K.  
 C'LC BY R. K.  
 CK'D BY J. D.  
 BASE MAP NOS.  
 F-1790

REF. MAP NOS.  
 C.C.M. 218.1

AS BUILT NO'S  
 166-5

2323

RECORDED  
 AT REQUEST OF OFFICER  
 DEPT. OF PUBLIC WORKS  
 SEPT. 28 AM. 1965  
 7 PAST 9 A.M.

IN BOOK 100  
 AT PAGE 100  
 OF MAP-RECORDING STATE HWY. MAP 2  
 LOS ANGELES COUNTY, CALIF.  
 RAY E. LEB  
 COUNTY RECORDER 79.3  
 BY *Carthy* Deputy

STATE OF CALIFORNIA  
 HIGHWAY TRANSPORTATION AGENCY  
 DEPARTMENT OF PUBLIC WORKS  
 DIVISION OF HIGHWAYS

**PROPOSED RELINQUISHMENT**

0 100 200 300 400

AREA TO BE RELINQUISHED SHOWN TMUG  
 ACCESS PROHIBITED

CITY OF INDUSTRY