

CITY	COUNTY	ROUTE	POST MILES	SHEET NO.	TOTAL SHEETS
7	LA	14	32.2/47.3	1	9

R.D. Dellebach
 DEPUTY DISTRICT ENGINEER
 July 27, 1965

2713

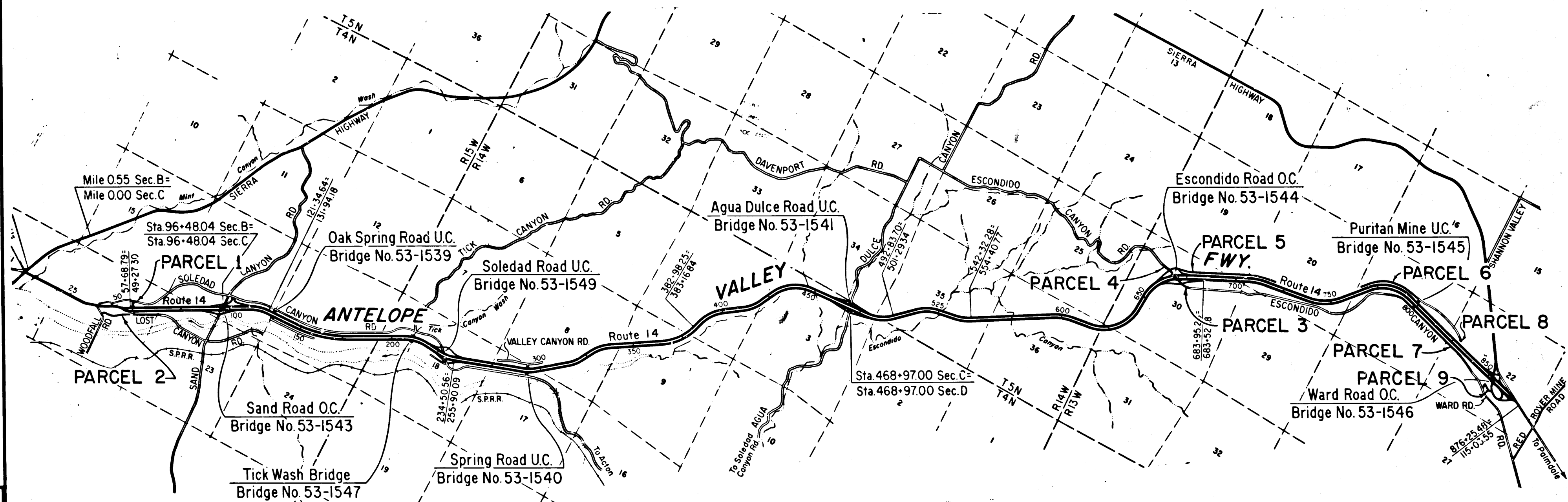
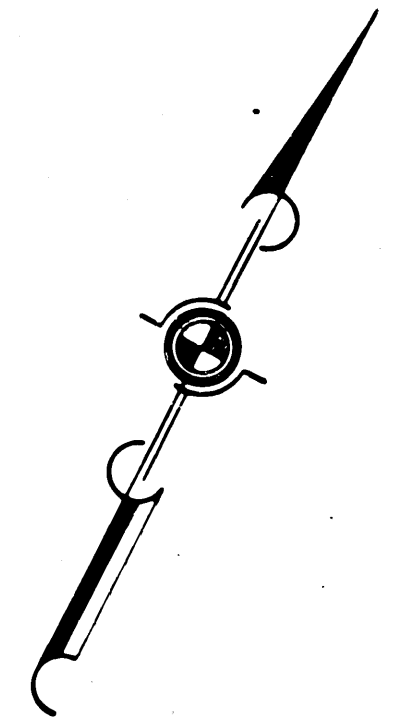
RECORDED
 AT REQUEST OF OWNER DEPT OF PUBLIC WORKS
 AUG. 2, 1965
 7 MIN. PART 9 A.M.

IN BOOK 2
 AT PAGE 1
 OF LOS ANGELES COUNTY HIGHWAY MAPS
 LOS ANGELES COUNTY, CALIF.
 RAY E. [Signature]
 COUNTY RECORDER
 BY [Signature] DEPT. FREE

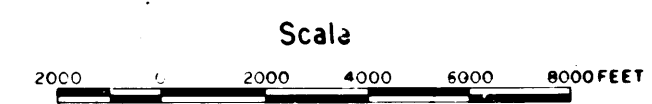
STATE OF CALIFORNIA
 HIGHWAY TRANSPORTATION AGENCY
 DEPARTMENT OF PUBLIC WORKS
 DIVISION OF HIGHWAYS

RIGHT OF WAY MAPS OF
STATE HIGHWAY

In Los Angeles County, between Sierra Highway at Soledad Canyon Road
 and Sierra Highway at Red Rover Mine Road



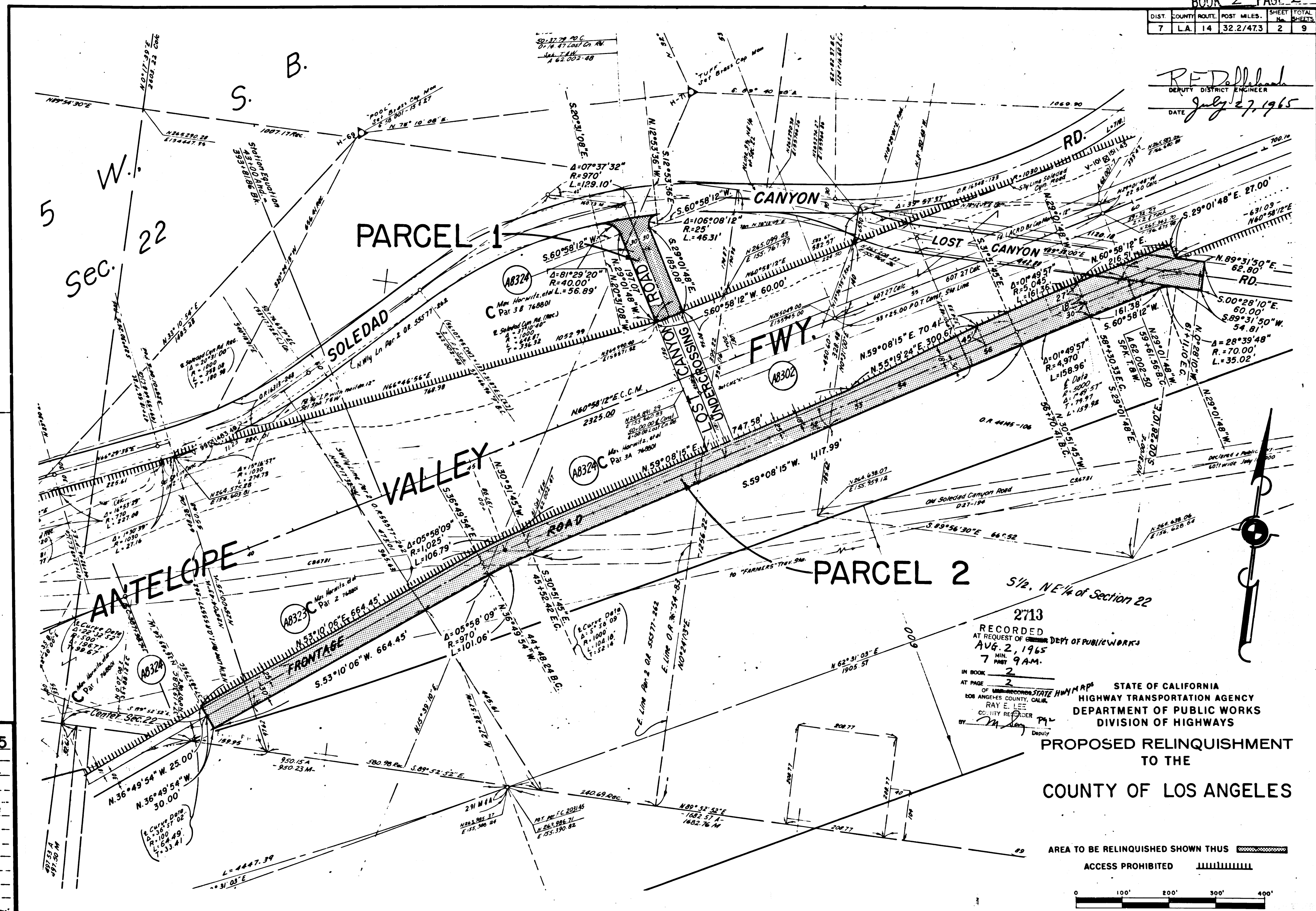
PROPOSED RELINQUISHMENT
 TO THE
 COUNTY OF LOS ANGELES



REL- 395
 DRN BY W.F.S.
 C.L.C. BY J.W.H.
 CK'D BY HSL
 BASE MAP NO'S
 F-1063, F-1064,
 F-1065
 REF. MAP NO'S
 AS BUILT NO'S
 145-16

DIST.	COUNTY	ROUTE	POST MILES.	SHEET No.	TOTAL SHEETS
7	L.A.	14	32.2/473	2	9

RED [Signature]
 DEPUTY DISTRICT ENGINEER
 DATE July 27, 1965



REL- 395
 DRN BY W.E.S.
 C.L.C. BY J.W.H.
 CKD BY H.S.L.
 BASE MAP NO'S
 F-1063, F-1064
 B-F-1065
 REF. MAP NO'S
 AS BUILT NO'S
 143-18

2713
 RECORDED
 AT REQUEST OF STATE DEPT OF PUBLIC WORKS
 AUG. 2, 1965
 7 MIN. PAST 9 A.M.
 IN BOOK 2
 AT PAGE 2
 OF UNRECORDED STATE HIGHWAY MAP
 LOS ANGELES COUNTY, CALIF.
 RAY E. LEE
 COUNTY RECORDER
 BY [Signature] Deputy

STATE OF CALIFORNIA
 HIGHWAY TRANSPORTATION AGENCY
 DEPARTMENT OF PUBLIC WORKS
 DIVISION OF HIGHWAYS

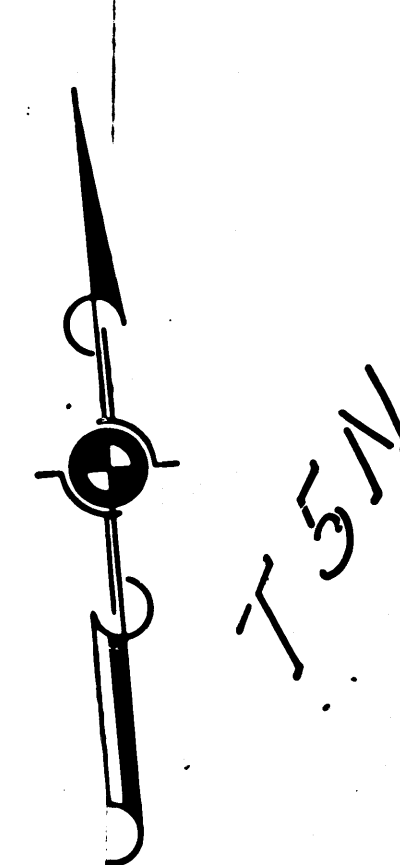
PROPOSED RELINQUISHMENT
 TO THE
 COUNTY OF LOS ANGELES

AREA TO BE RELINQUISHED SHOWN THUS [Symbol]
 ACCESS PROHIBITED [Symbol]
 0 100' 200' 300' 400'

DIST.	COUNTY	ROUTE	POST MILES.	SHEET	TOTAL SHEETS
7	L.A.	14	32.2/47.3	3	9

R. D. Dillshach
 DEPUTY DISTRICT ENGINEER
 DATE *July 27, 1965*

SEC. 30



R 13 W

COUNTY

PARCEL 4

OF
PARCEL 5

FRONTAGE

FREEWAY

CANYON

PARCEL 3

LOS ANGELES

ESCONDIDO

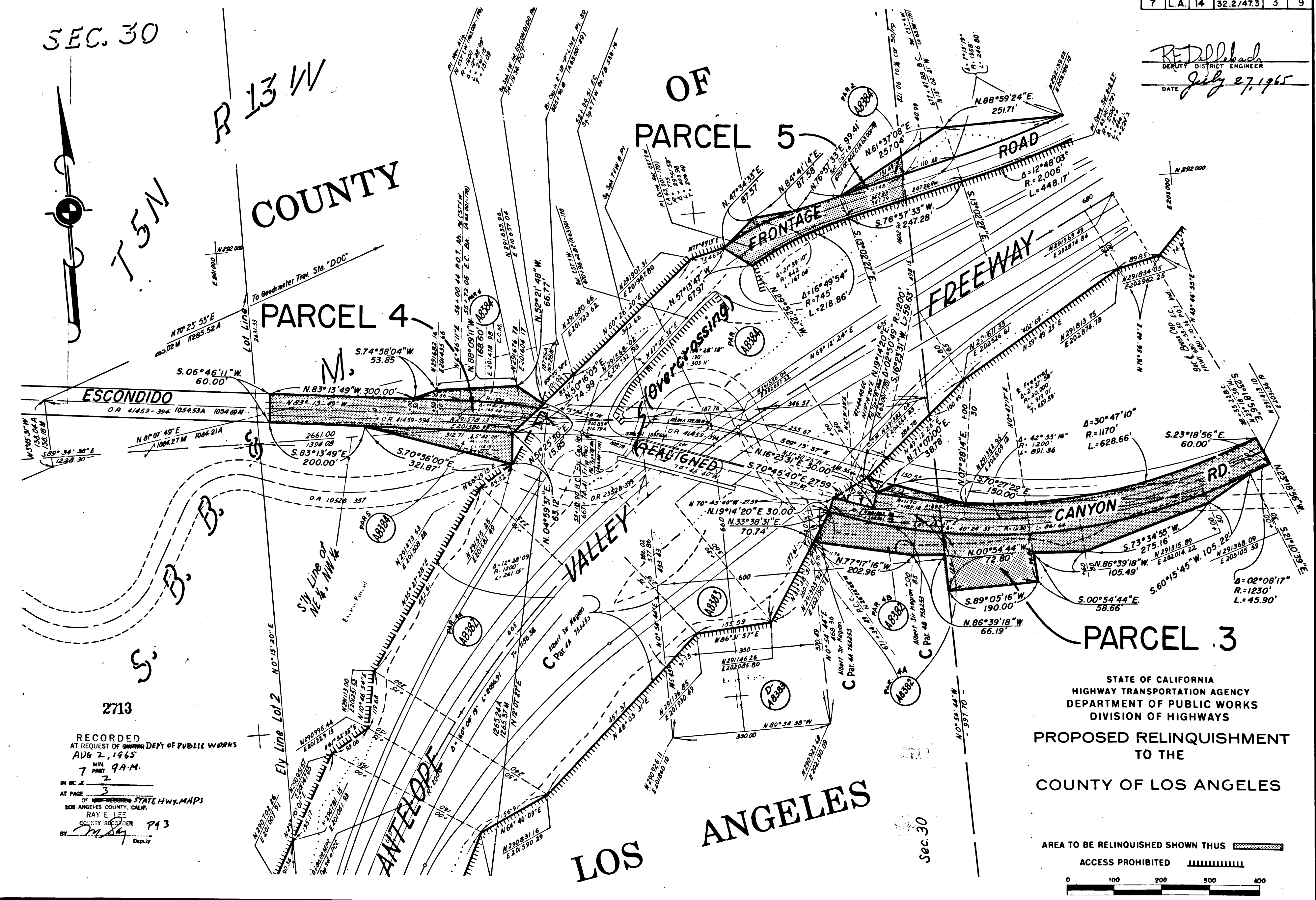
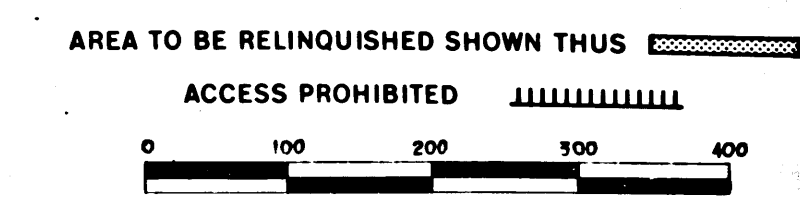
VALLEY

ANTELOPE

REL- 395
 DWN BY W.F.S.
 C.L.C. BY J.W.H.
 C.K'D BY HSL
 BASE MAP NO'S
 F-1063 F-1064
 F-1065
 REF. MAP NO'S
 AS BUILT NO'S
 145-18

2713
 RECORDED
 AT REQUEST OF DEPT. OF PUBLIC WORKS
 AUG 2, 1965
 7 MIN. 9A.M.
 IN B.C. 2
 AT PAGE 3
 OF THE RECORDING STATE HWY. MAPS
 LOS ANGELES COUNTY, CALIF.
 RAY E. LEE
 COUNTY RECORDER
 BY *M. J. [Signature]* P 43
 Deputy

STATE OF CALIFORNIA
 HIGHWAY TRANSPORTATION AGENCY
 DEPARTMENT OF PUBLIC WORKS
 DIVISION OF HIGHWAYS
 PROPOSED RELINQUISHMENT
 TO THE
 COUNTY OF LOS ANGELES



DIST	COUNTY	ROUTE	POST MILES.	SHEET No.	TOTAL SHEETS
7	L.A.	14	32.2/47.3	4	9

R. D. DeLoach
 DEPUTY DISTRICT ENGINEER
 DATE *July 27, 1965*

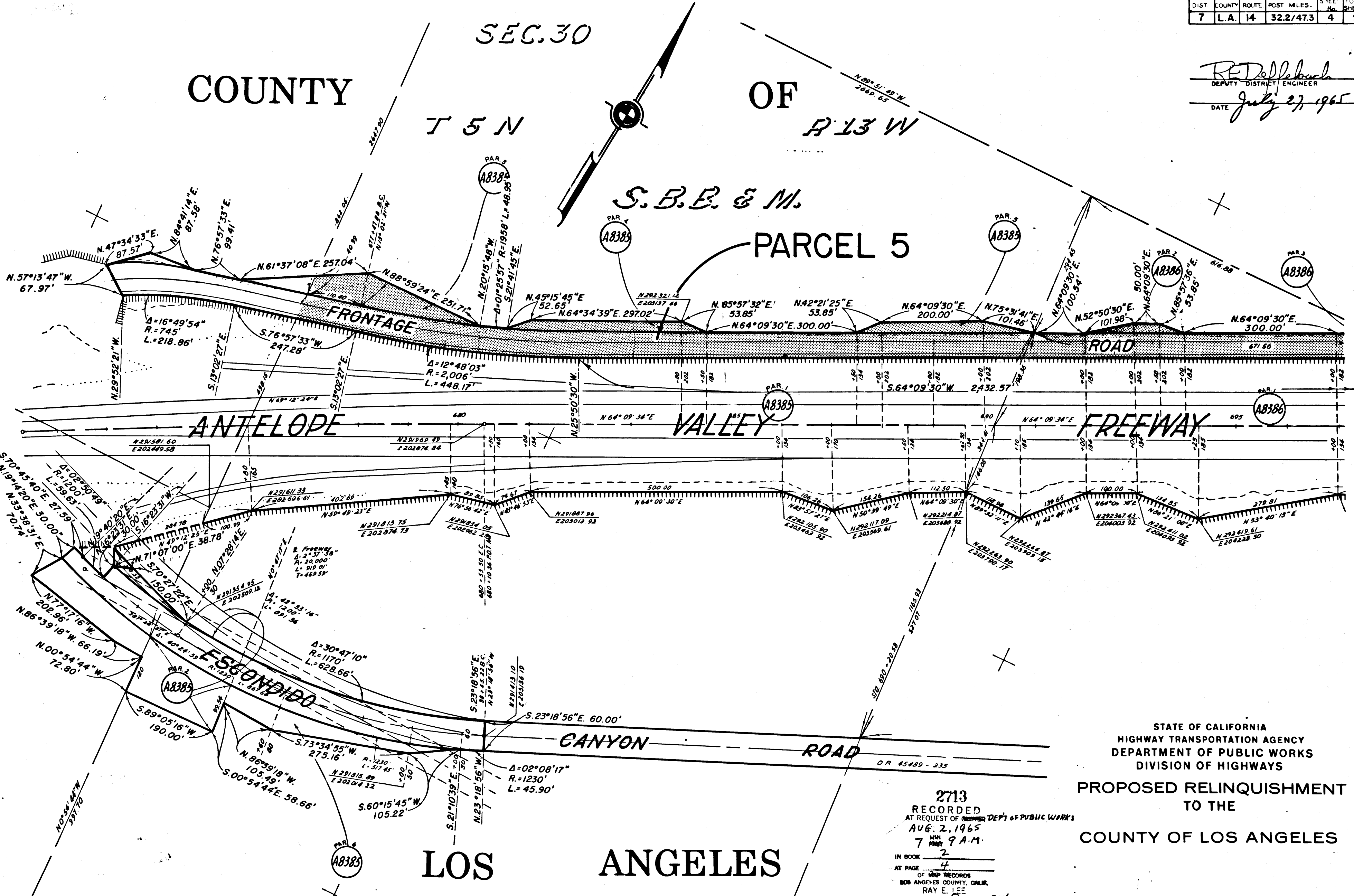
COUNTY

OF

SEC. 30
 T 5 N
 R 13 W

S. B. E. & M.

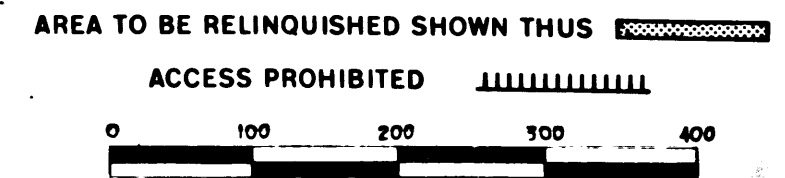
PARCEL 5



REL- 395
 DRN BY W.F.S.
 C.L.C. BY J.W.H.
 CK'D BY HSL
 BASE MAP NO'S
 F-1063 F-1064
 F-1065
 REF. MAP NO'S
 AS BUILT NO'S
 145-18

2713
 RECORDED
 AT REQUEST OF DEPT. OF PUBLIC WORKS
 AUG. 2, 1965
 7 MIN
 9 A.M.
 IN BOOK 2
 AT PAGE 4
 OF MAP RECORDS
 LOS ANGELES COUNTY, CALIF.
 RAY E. LEE
 COUNTY RECORDER
 BY *[Signature]* Deputy

STATE OF CALIFORNIA
 HIGHWAY TRANSPORTATION AGENCY
 DEPARTMENT OF PUBLIC WORKS
 DIVISION OF HIGHWAYS
 PROPOSED RELINQUISHMENT
 TO THE
 COUNTY OF LOS ANGELES



DIST	COUNTY	ROUTE	POST MILES	SHEET NO.	TOTAL SHEETS
7	L.A.	14	32.2/47.3	5	9

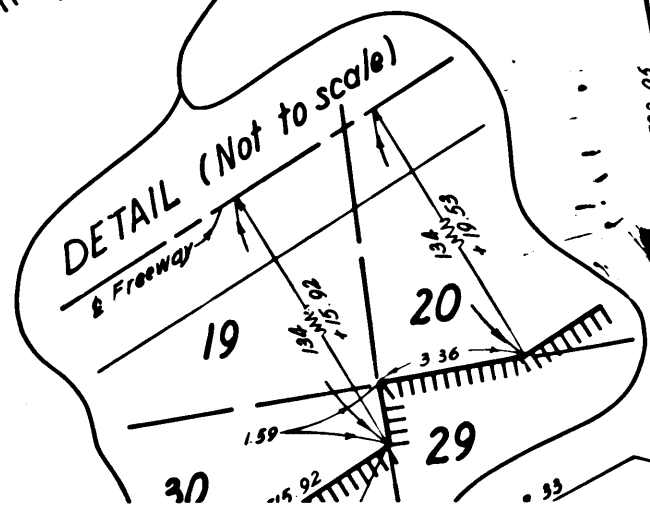
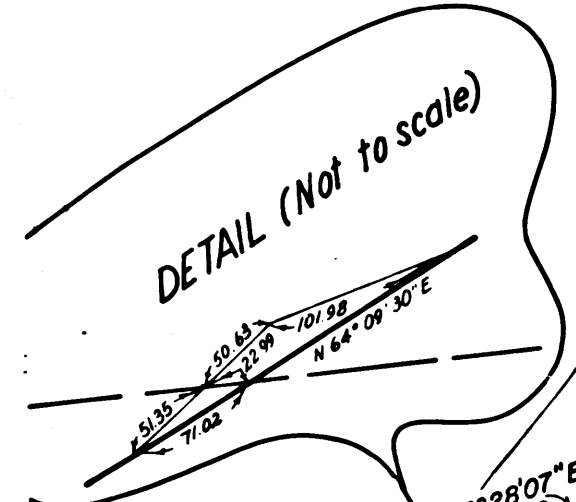
RECORDED
 AT REQUEST OF **COUNTY DEPT OF PUBLIC WORKS**
 AUG 2, 1965
 7 PAST 9 A.M.
 IN BOOK 2
 AT PAGE 5
 OF MAP RECORDS STATE HWY. MAPS
 LOS ANGELES COUNTY, CALIF.
 RAY E. LEE
 COUNTY RECORDER
 BY *M.A. 75*
 Deputy

R. Dellebach
 DEPUTY DISTRICT ENGINEER
 DATE *July 27, 1965*

T5N R13W
 COUNTY
 S.B.B. & M.

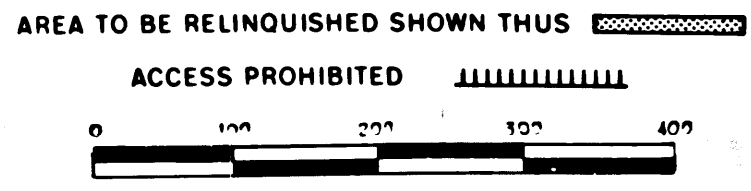


PARCEL 5 OF



REL- 395
 DRN BY *W.F.S.*
 C.L.C. BY *J.W.H.*
 CK'D BY *HSL*
 BASE MAP NO'S
 F-1063 F-1064
 F-1085
 REF. MAP NO'S
 AS BUILT NO'S
 145-18

STATE OF CALIFORNIA
 HIGHWAY TRANSPORTATION AGENCY
 DEPARTMENT OF PUBLIC WORKS
 DIVISION OF HIGHWAYS
 PROPOSED RELINQUISHMENT
 TO THE
 COUNTY OF LOS ANGELES



EE
 E

Handwritten notes and initials in the bottom right corner.

BOOK 2 PAGE 6				SHEET TOTAL	
DIST.	COUNTY	ROUTE	POST MILES.	No.	SHEETS
7	L.A.	14	32.2/47.3	6	9

R. Deffenbach
 DEPUTY DISTRICT ENGINEER
 DATE July 27, 1965

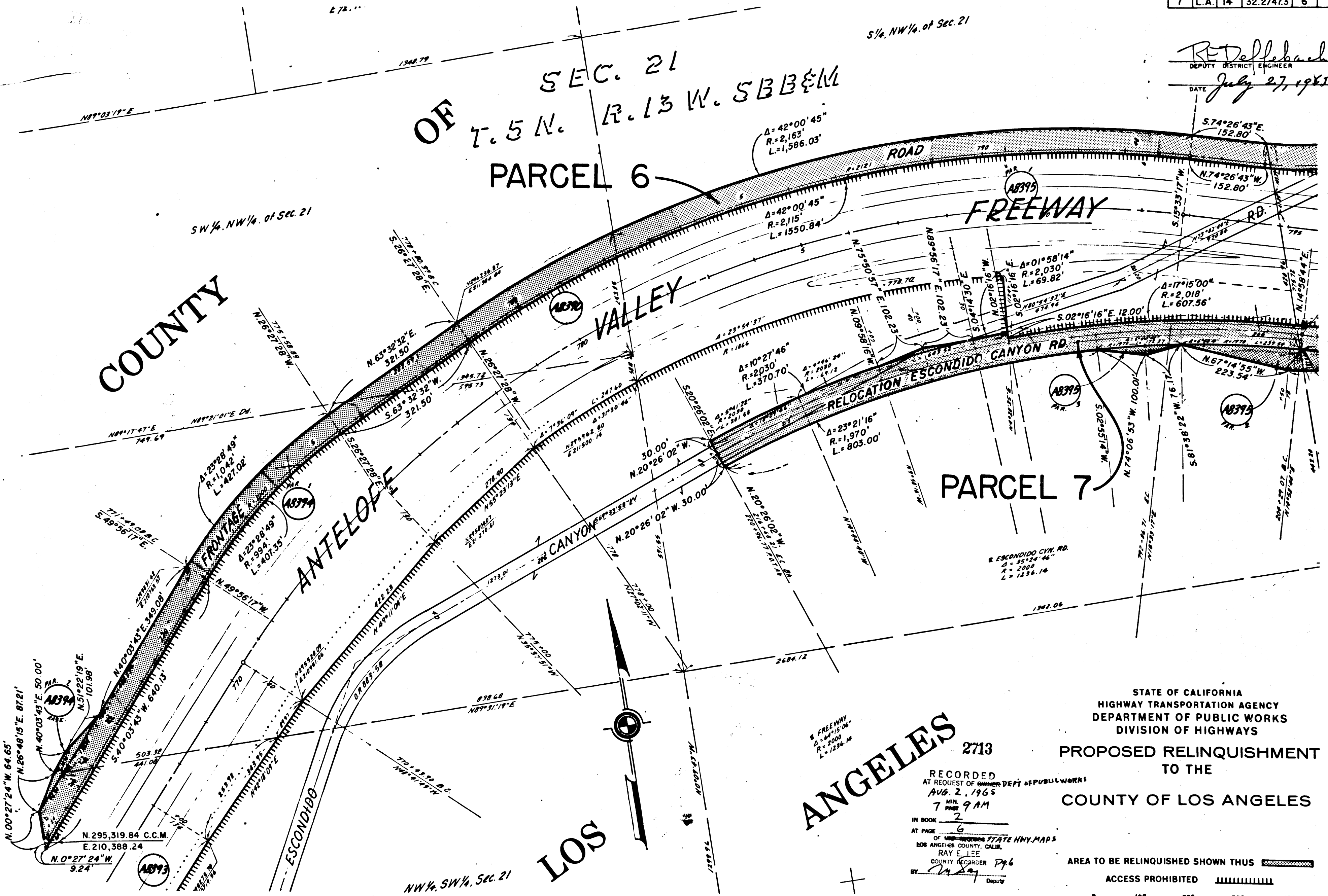
OF SEC. 21
 T. 5 N. R. 13 W. S. B. B. & M.
 PARCEL 6

COUNTY

VALLEY

PARCEL 7

LOS ANGELES



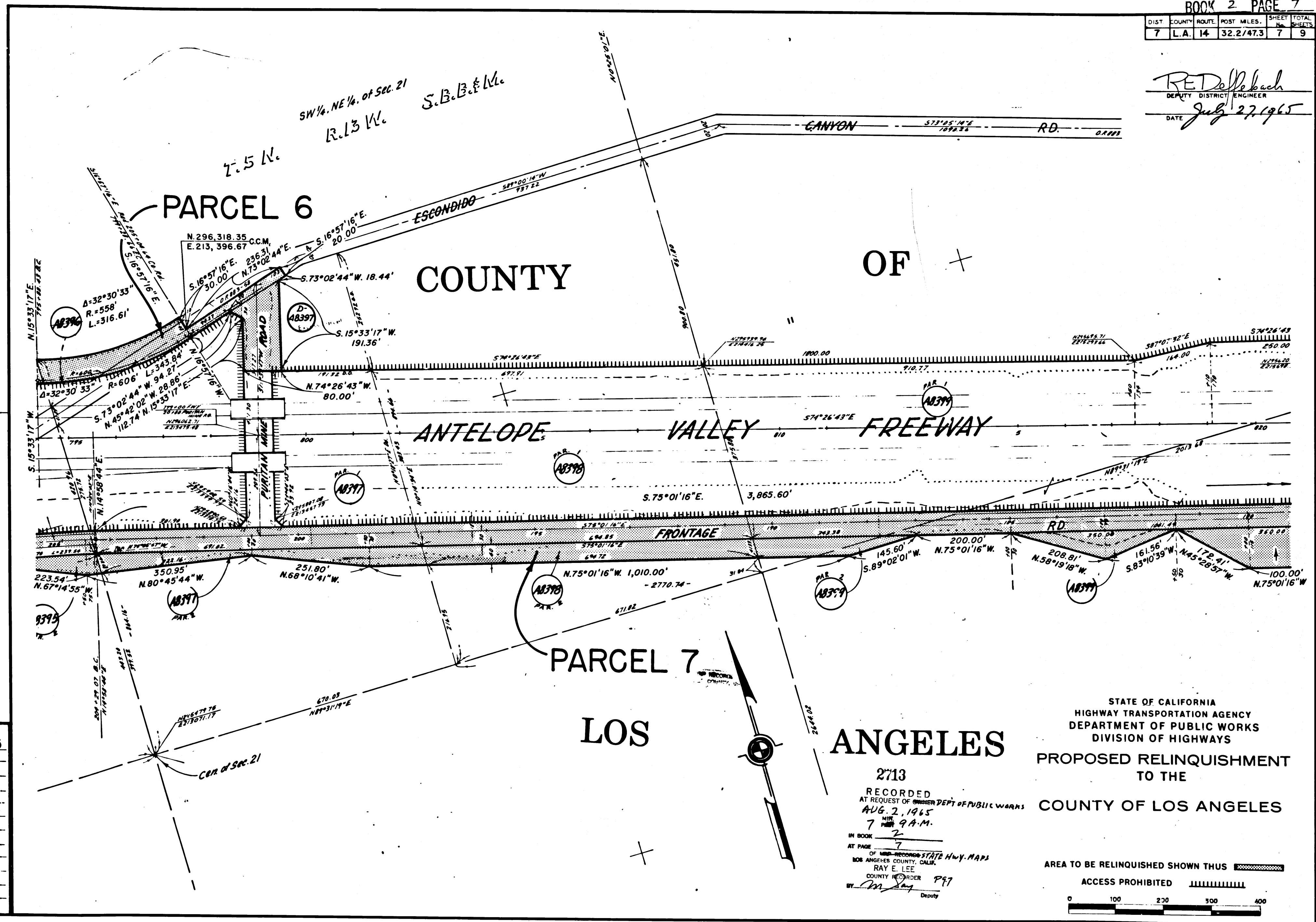
REL- 395
 DRN BY W.F.S.
 C.L.C. BY J.W.H.
 CKD BY HSL
 BASE MAP NOS. F-1063 F-1064
 F-1065
 REF. MAP 1403
 AS BUILT NO'S 145-18

STATE OF CALIFORNIA
 HIGHWAY TRANSPORTATION AGENCY
 DEPARTMENT OF PUBLIC WORKS
 DIVISION OF HIGHWAYS
 PROPOSED RELINQUISHMENT
 TO THE
 COUNTY OF LOS ANGELES

2713
 RECORDED
 AT REQUEST OF COUNTY DEPT. OF PUBLIC WORKS
 AUG. 2, 1965
 7 MIN. 9 AM
 IN BOOK 2
 AT PAGE 6
 OF HIGHWAYS STATE H.W. MAPS
 LOS ANGELES COUNTY, CALIF.
 RAY E. LEE
 COUNTY RECORDER P. 6
 BY *[Signature]* Deputy

AREA TO BE RELINQUISHED SHOWN THUS ACCESS PROHIBITED

RE Dellebach
 DEPUTY DISTRICT ENGINEER
 DATE *July 27, 1965*



REL- 395
 DWN BY W.F.S.
 C.L.C. BY J.W.H.
 CK'D BY H.S.L.
 BASE MAP NO'S
 F-1063 F-1064
 F-1065
 REF. MAP NO'S
 AS BUILT NO'S
 145-18

395

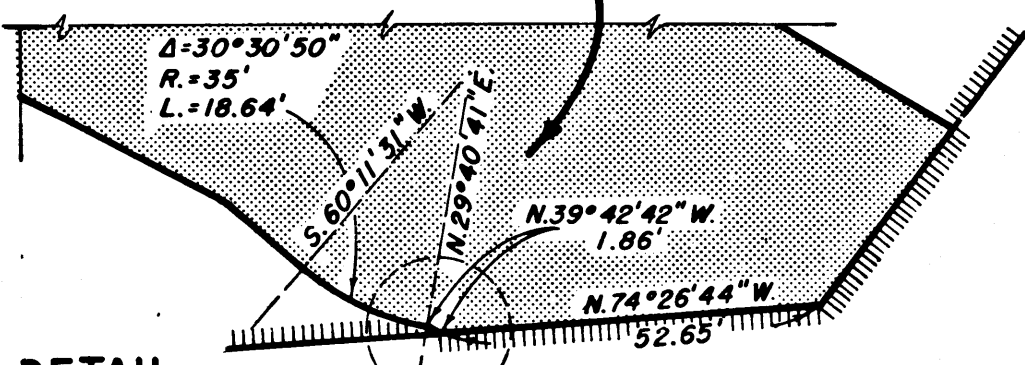
DIST.	COUNTY	ROUTE	POST MILES.	SHEET NO.	TOTAL SHEETS
7	L.A.	14	32.2/47.3	8	9

R.D. Dellabach
 DEPUTY DISTRICT ENGINEER
 DATE *July 27, 1965*

SEC. 22 PARCEL 8
 T5N R13W

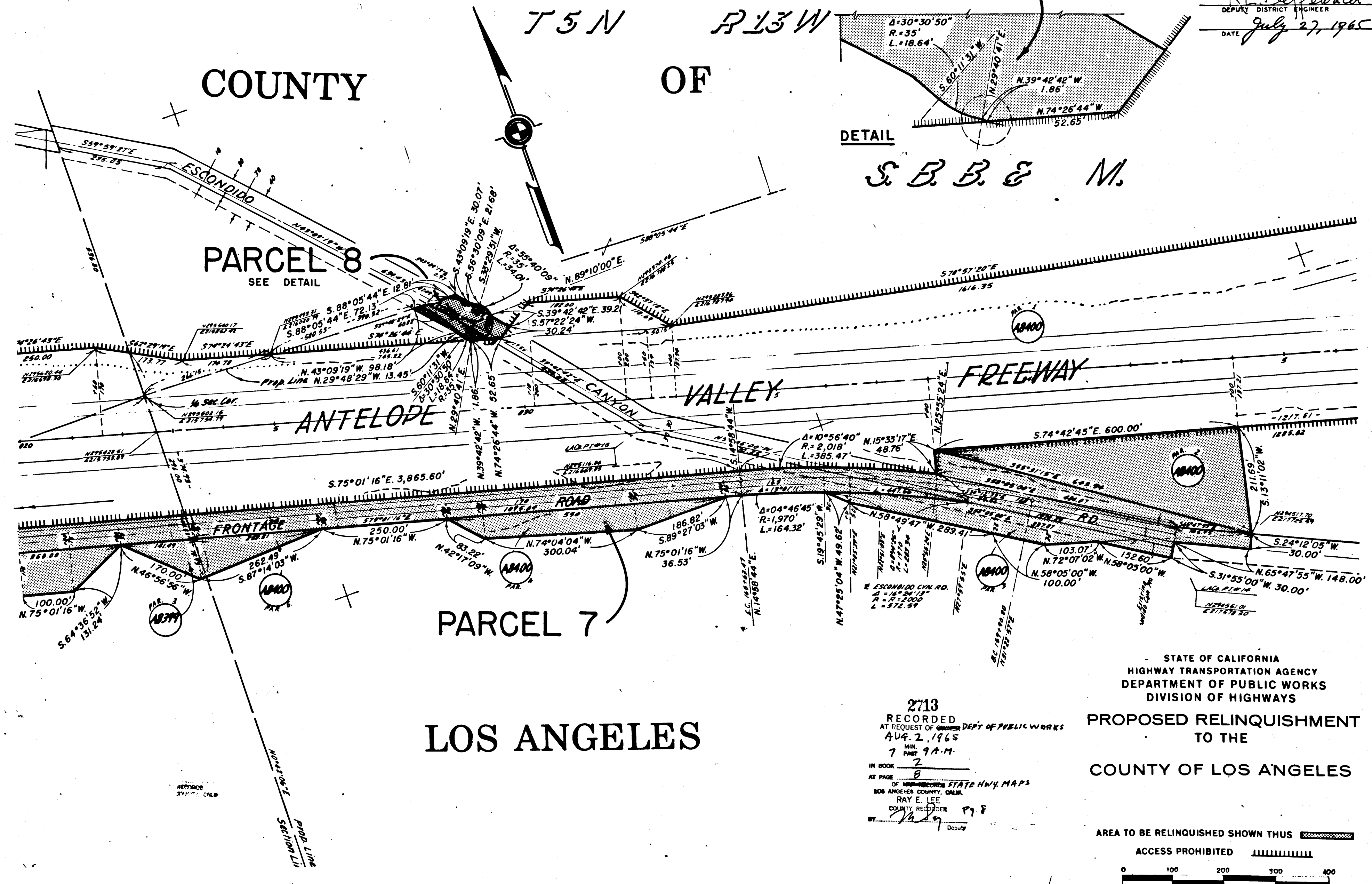
COUNTY

OF



DETAIL

S. B. B. & M.



PARCEL 8
 SEE DETAIL

PARCEL 7

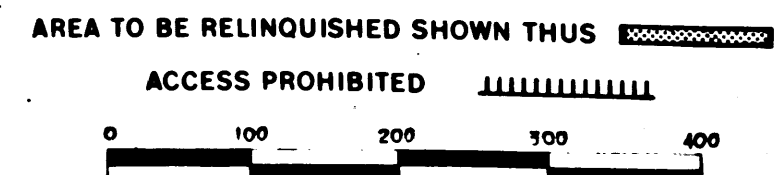
LOS ANGELES

STATE OF CALIFORNIA
 HIGHWAY TRANSPORTATION AGENCY
 DEPARTMENT OF PUBLIC WORKS
 DIVISION OF HIGHWAYS

PROPOSED RELINQUISHMENT
 TO THE
 COUNTY OF LOS ANGELES

REL- 395
 DRYN BY *W.F.S.*
 C.L.C. BY *J.W.H.*
 CTD BY *H.S.L.*
 BASE MAP NO'S
 F-1063 F-1064
 F-1065
 REF. MAP NOS
 AS BUILT NO'S
 145-18

2713
 RECORDED
 AT REQUEST OF *OWNER* DEPT OF PUBLIC WORKS
 AUG. 2, 1965
 7 MIN. PART 9 A.M.
 IN BOOK 2
 AT PAGE 8
 OF UNRECORDED STATE HWY. MAPS
 LOS ANGELES COUNTY, CALIF.
 RAY E. LEE
 COUNTY RECORDER
 BY *CLJ* 918
 Deputy

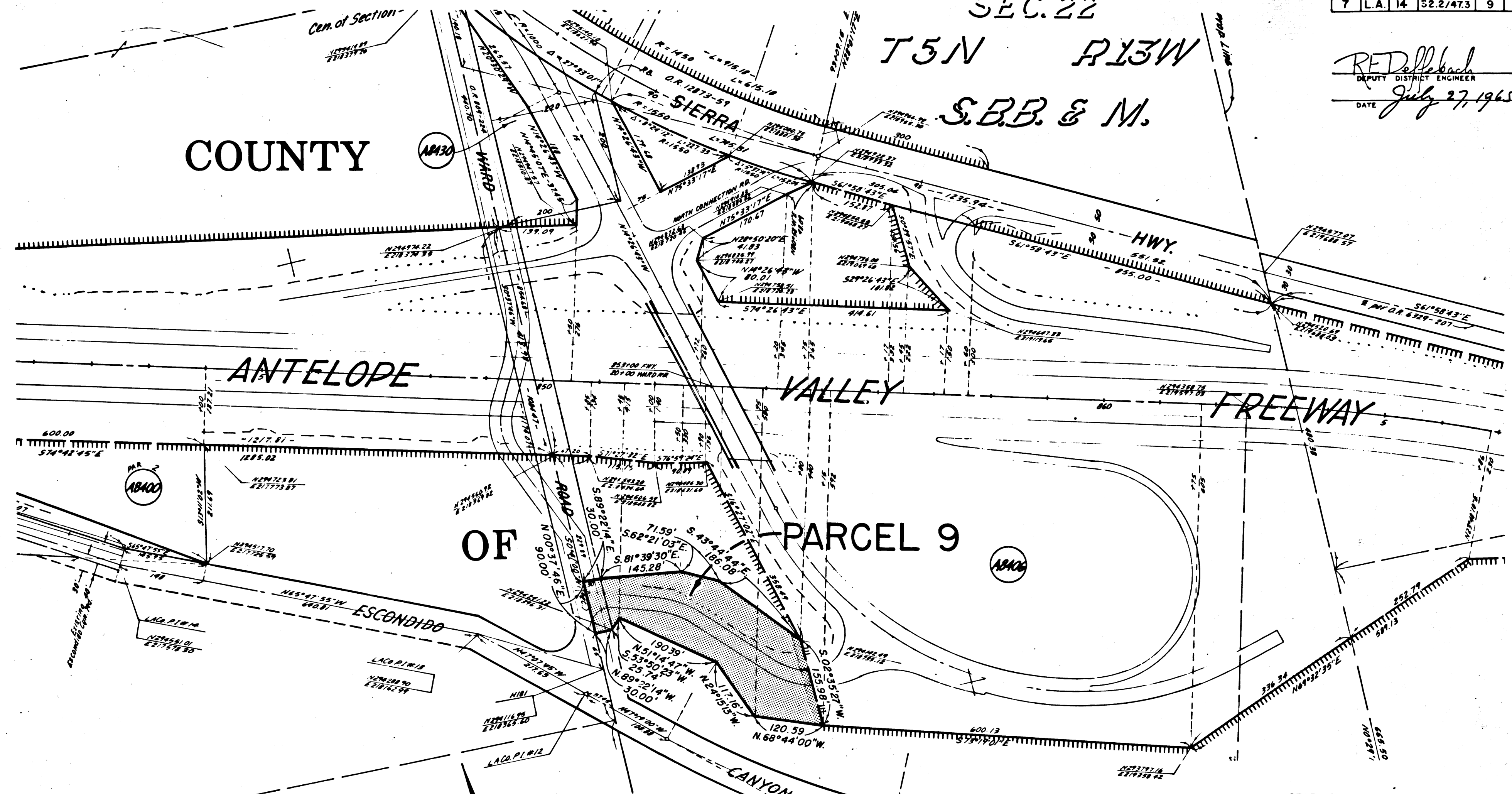


DIST.	COUNTY	ROUTE	POST MILES	SHEET NO.	TOTAL SHEETS
7	L.A.	14	52.2/47.3	9	9

SEC. 22
 T5N R13W
 S.B.B. & M.

R.F. Dellebach
 DEPUTY DISTRICT ENGINEER
 DATE July 27, 1965

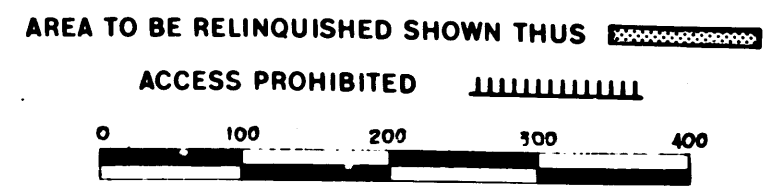
COUNTY



OF PARCEL 9

LOS ANGELES

STATE OF CALIFORNIA
 HIGHWAY TRANSPORTATION AGENCY
 DEPARTMENT OF PUBLIC WORKS
 DIVISION OF HIGHWAYS
 PROPOSED RELINQUISHMENT
 TO THE
 COUNTY OF LOS ANGELES



REL- 395
 DWN BY W.F.S.
 C.L.C. BY J.W.H.
 CK'D BY H.S.L.
 BASE MAP NO'S...
 F-1063 F-1064
 F-1065
 REF. MAP NOS.
 AS BUILT NO'S...
 145-18

2713
 RECORDED
 AT REQUEST OF DEPT. OF PUBLIC WORKS
 AUG. 2, 1965
 7 AM
 IN BOOK 2
 AT PAGE 9
 OF HIGHWAY STATE HWY. MAPS
 LOS ANGELES COUNTY, CALIF.
 RAY E. JEE
 COUNTY RECORDER
 P.P. 9