

847 2-20

BOOK 2 PAGE 20

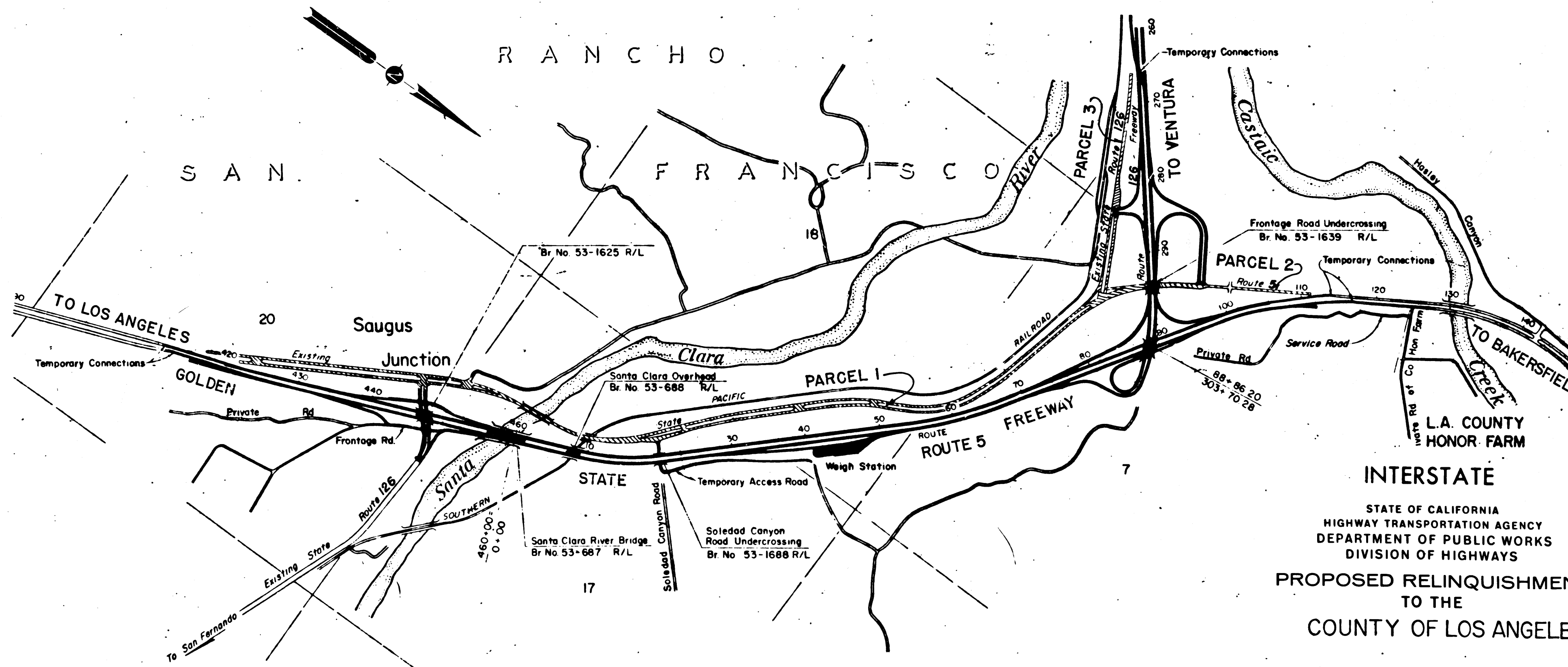
DIST	COUNTY	ROUTE	POST MILES.	SHEET No.	TOTAL SHEETS
07	LA	5	53.0/55.9	1	6
		126	5.1/5.7		

STATE OF CALIFORNIA
 HIGHWAY TRANSPORTATION AGENCY
 DEPARTMENT OF PUBLIC WORKS
 DIVISION OF HIGHWAYS

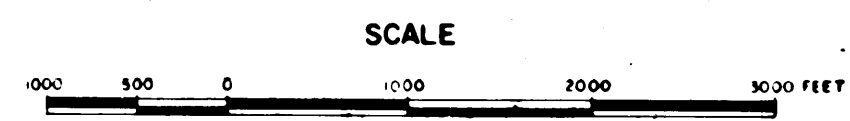
RIGHT OF WAY MAPS OF
STATE HIGHWAY

In Los Angeles County on Route 5 between 0.8 mile south of Saugus Junction and 3.1 miles south of Castaic and on Route 126 between 0.8 mile west of Route 5 and Route 5

RED DeLebach
 DEPUTY DISTRICT ENGINEER
 August 3, 1965
 DATE
 2:15 P.M.
 RECORDED
 AT REQUEST OF ENGINEER
 DEPT. OF PUBLIC WORKS
 AUG 9 1965
 47 PM 8 A.M.
 BOOK 2
 PAGE 20
 OF 100 SHEETS STATE HWY MAPS
 SAN ANGELES COUNTY, CALIF.
 RAY E. LEE
 COUNTY RECORDER
M. Ray FREE



INTERSTATE
 STATE OF CALIFORNIA
 HIGHWAY TRANSPORTATION AGENCY
 DEPARTMENT OF PUBLIC WORKS
 DIVISION OF HIGHWAYS
 PROPOSED RELINQUISHMENT
 TO THE
 COUNTY OF LOS ANGELES

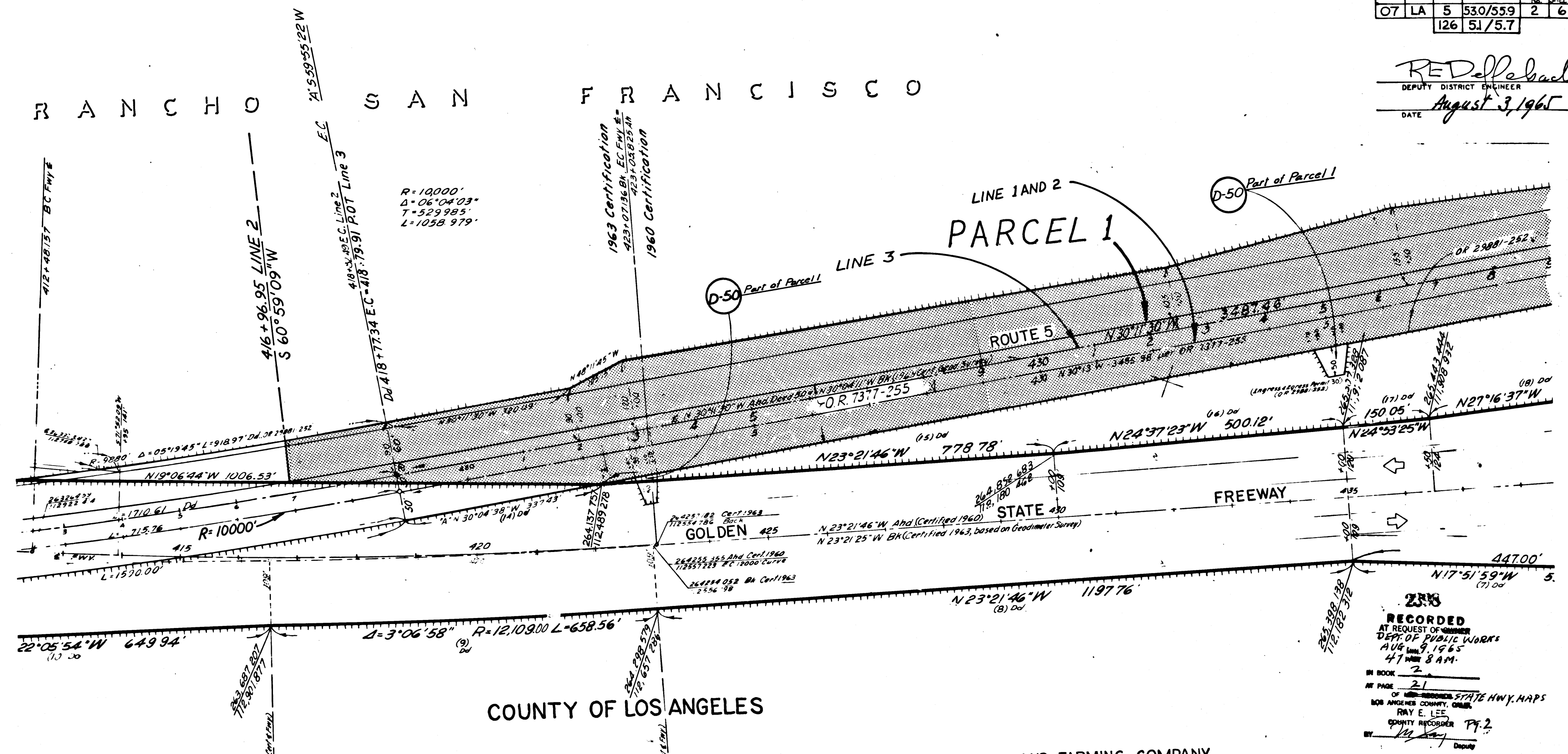


REL- 431
 DWN BY D.A.C.
 C.L.C BY F.M.
 CK'D BY J.S.
 BASE MAP NO'S
 F 1309
 F 1308
 REF. MAP NO'S
 CCM 26.2, 25.1
 AS BUILT NO'S
 155-15

DIST.	COUNTY	ROUTE	POST MILES.	SHEET No.	TOTAL SHEETS
07	LA	5	530/559	2	6
			126	51/57	

RED Della Bach
 DEPUTY DISTRICT ENGINEER
 DATE August 3, 1965

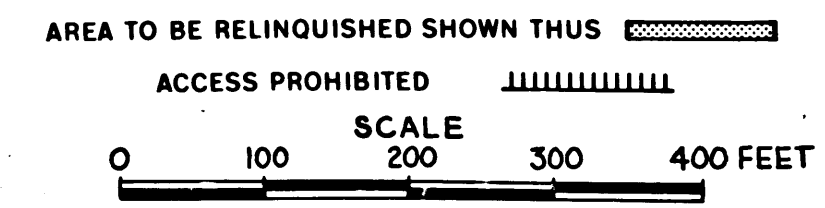
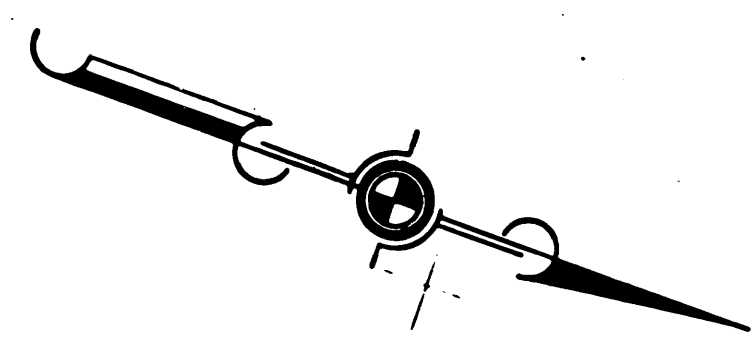
RANCHO SAN FRANCISCO



RECORDED
 AT REQUEST OF ENGINEER
 DEPT. OF PUBLIC WORKS
 AUG 11 9 1965
 47 AM 8 AM.
 IN BOOK 2
 AT PAGE 21
 OF UNRECORDED STATE HWY. MAPS
 LOS ANGELES COUNTY, CALIF.
 RAY E. LEE
 COUNTY RECORDER Pg. 2
 BY [Signature] Deputy

THE NEWHALL LAND AND FARMING COMPANY

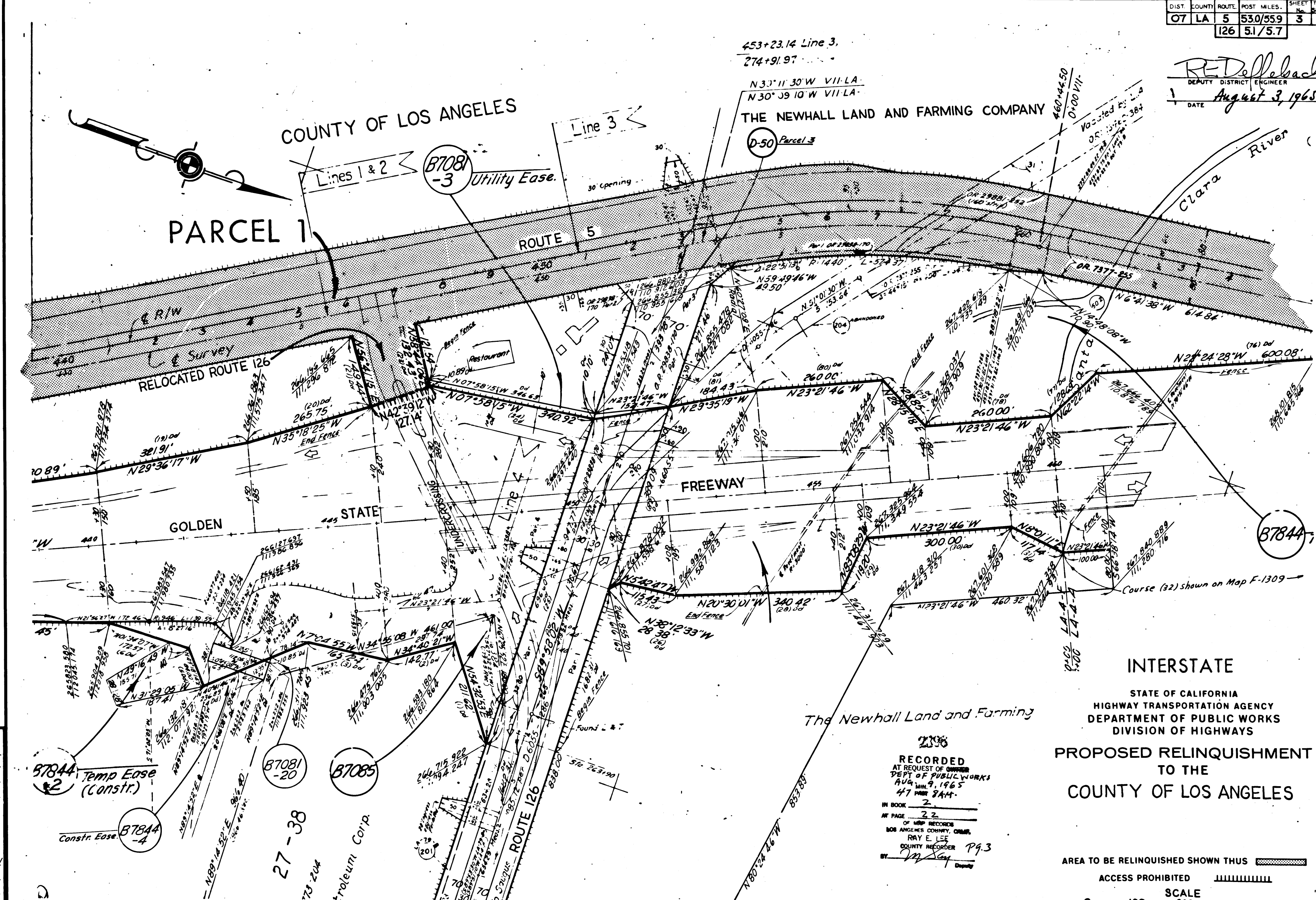
INTERSTATE
 STATE OF CALIFORNIA
 HIGHWAY TRANSPORTATION AGENCY
 DEPARTMENT OF PUBLIC WORKS
 DIVISION OF HIGHWAYS
 PROPOSED RELINQUISHMENT
 TO THE
 COUNTY OF LOS ANGELES



REL-431
 DWN BY DAC
 C/LC BY EM
 CKD BY JS
 BASE MAP NOS
 F 1309
 F 1308
 REF. MAP NOS
 S.C.M. 26, 27, 25, 1
 AS BUILT NOS
 155-1E

BOOK 2 PAGE 22		SHEET	TOTAL
DIST.	COUNTY	ROUTE	POST MILES.
07	LA	5	530/559
			3 6
			126 51/5.7

REDellebach
 DEPUTY DISTRICT ENGINEER
 DATE August 3, 1965



COUNTY OF LOS ANGELES

PARCEL 1

453+23.14 Line 3.
 274+91.97

N33°11'30\"/>

D-50 Parcel 3

Clara River

ROUTE 5

RELOCATED ROUTE 126

FREEWAY

GOLDEN

STATE

INTERSTATE

STATE OF CALIFORNIA
 HIGHWAY TRANSPORTATION AGENCY
 DEPARTMENT OF PUBLIC WORKS
 DIVISION OF HIGHWAYS

PROPOSED RELINQUISHMENT
 TO THE
 COUNTY OF LOS ANGELES

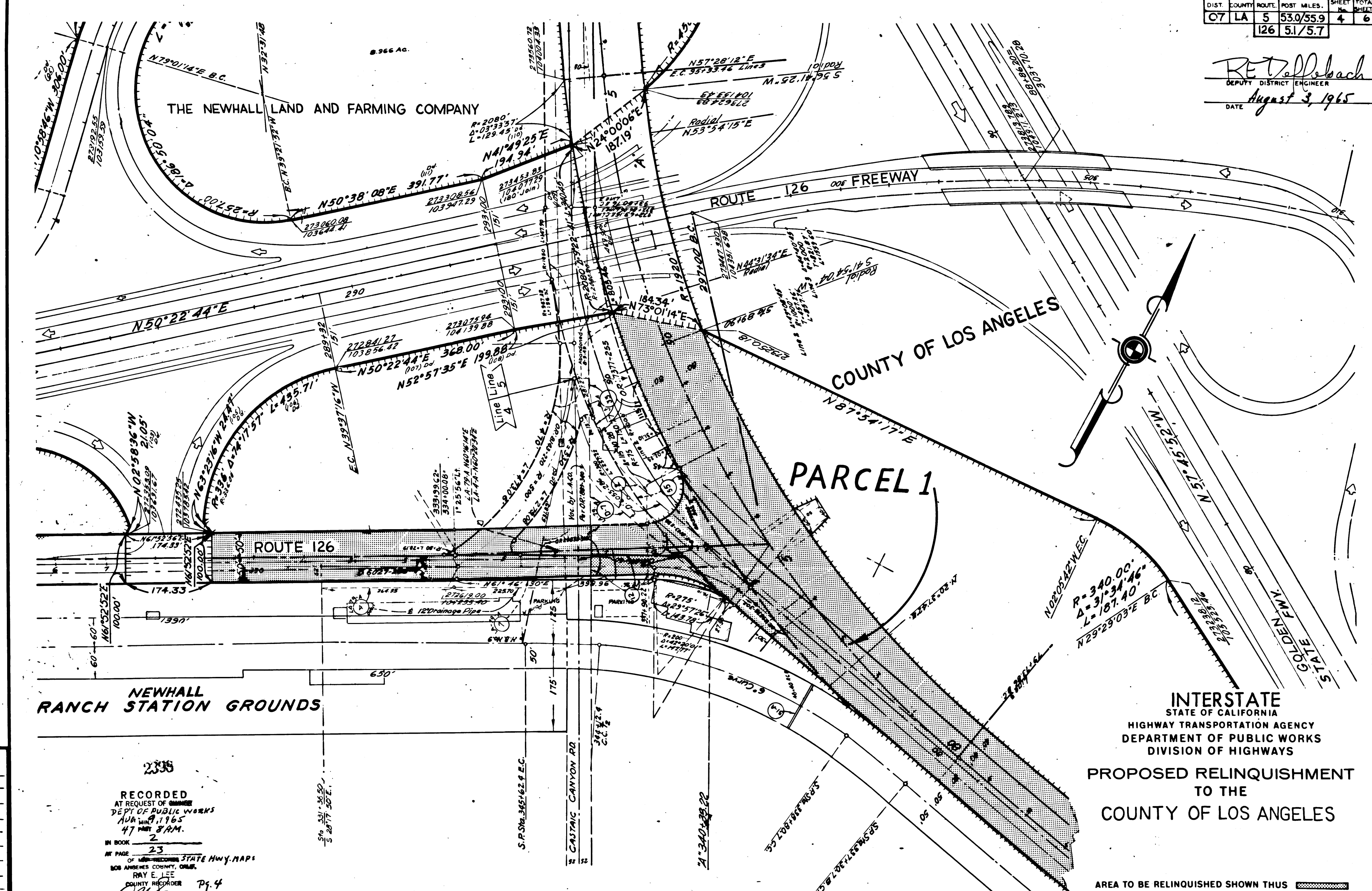
The Newhall Land and Farming

RECORDED
 AT REQUEST OF OWNER
 DEPT OF PUBLIC WORKS
 AUG 9, 1965
 47 PAGE 3444
 IN BOOK 2
 AT PAGE 22
 OF MAP RECORDS
 LOS ANGELES COUNTY, CALIF.
 RAY E. LEE
 COUNTY RECORDER P93
 BY [Signature] Deputy

AREA TO BE RELINQUISHED SHOWN THUS [Hatched Pattern]
 ACCESS PROHIBITED [Dashed Line]
 SCALE
 0 100 200 300 400 FEET

REL- 431
 DRN BY D.A.C.
 C/LC BY F.M.
 CKD BY J.S.
 BASE MAP NO'S
 F 1309
 F 1308
 REF. MAP NO'S
 C.C.M. 26-9251
 AS BUILT NO'S
 155-15

RET Altsbach
 DEPUTY DISTRICT ENGINEER
 DATE August 3, 1965



REL-431
 DWN BY D.A.C.
 CLC BY F.M.
 CKD BY J.S.
 BASE MAP NO'S
 F 1309
 F 1308
 REF. MAP NO'S
 CCM 26.2, 25.1
 AS BUILT NO'S
 155-15

2338
 RECORDED
 AT REQUEST OF ENGINEER
 DEPT. OF PUBLIC WORKS
 AUG 19 1965
 47 PAGE 8 AM.
 IN BOOK 2
 AT PAGE 23
 OF LOS ANGELES STATE HWY. MAPS
 LOS ANGELES COUNTY, CALIF.
 RAY E. LEE
 COUNTY RECORDER Pg. 4
 BY *[Signature]* Deputy

INTERSTATE
 STATE OF CALIFORNIA
 HIGHWAY TRANSPORTATION AGENCY
 DEPARTMENT OF PUBLIC WORKS
 DIVISION OF HIGHWAYS
 PROPOSED RELINQUISHMENT
 TO THE
 COUNTY OF LOS ANGELES

AREA TO BE RELINQUISHED SHOWN THUS
 ACCESS PROHIBITED
 SCALE
 0 100 200 300 400 FEET

DIST.	COUNTY	ROUTE	POST MILES.	SHEET NO.	TOTAL SHEETS
07	LA	5	53.0/55.9	5	6
			126	5.1/5.7	

RECORDED
 AT REQUEST OF OWNER
 DEPT. OF PUBLIC WORKS
 AUG. 8, 1965
 47 8 A.M.

IN BOOK 2
 AT PAGE 24
 OF THE LOS ANGELES STATE HWY. MAPS
 LOS ANGELES COUNTY, CALIF.
 RAY E. LEE
 COUNTY RECORDER Pg. 5
 BY 17809 Deputy

RE Dellebad
 DEPUTY DISTRICT ENGINEER
 DATE August 8, 1965

COUNTY OF
 LOS ANGELES

The Newhall Land and Farming Company

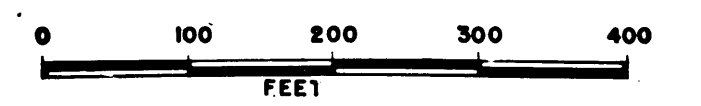
PARCEL 2

ROUTE 5

GOLDEN STATE FRWY

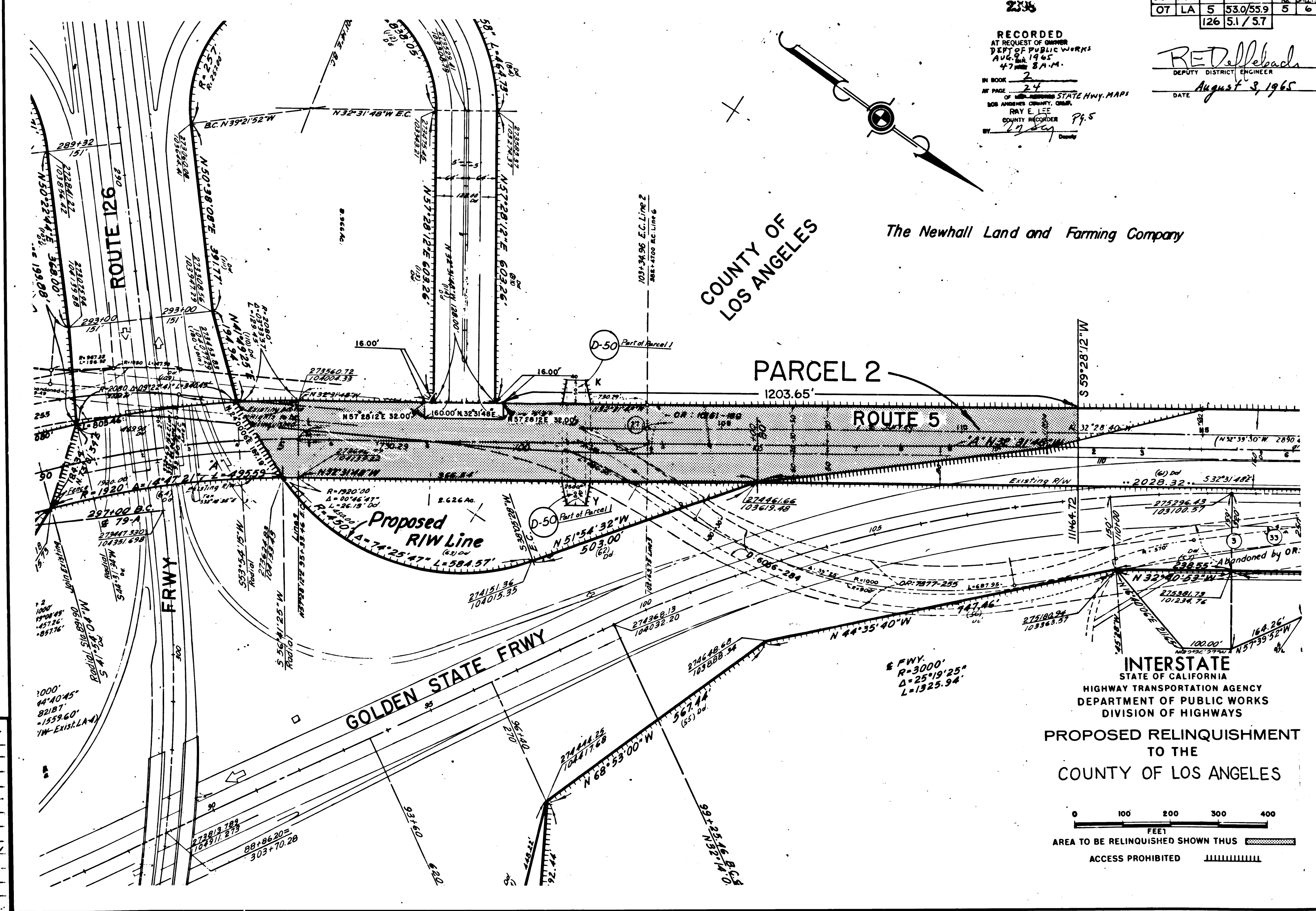
INTERSTATE
 STATE OF CALIFORNIA
 HIGHWAY TRANSPORTATION AGENCY
 DEPARTMENT OF PUBLIC WORKS
 DIVISION OF HIGHWAYS

PROPOSED RELINQUISHMENT
 TO THE
 COUNTY OF LOS ANGELES

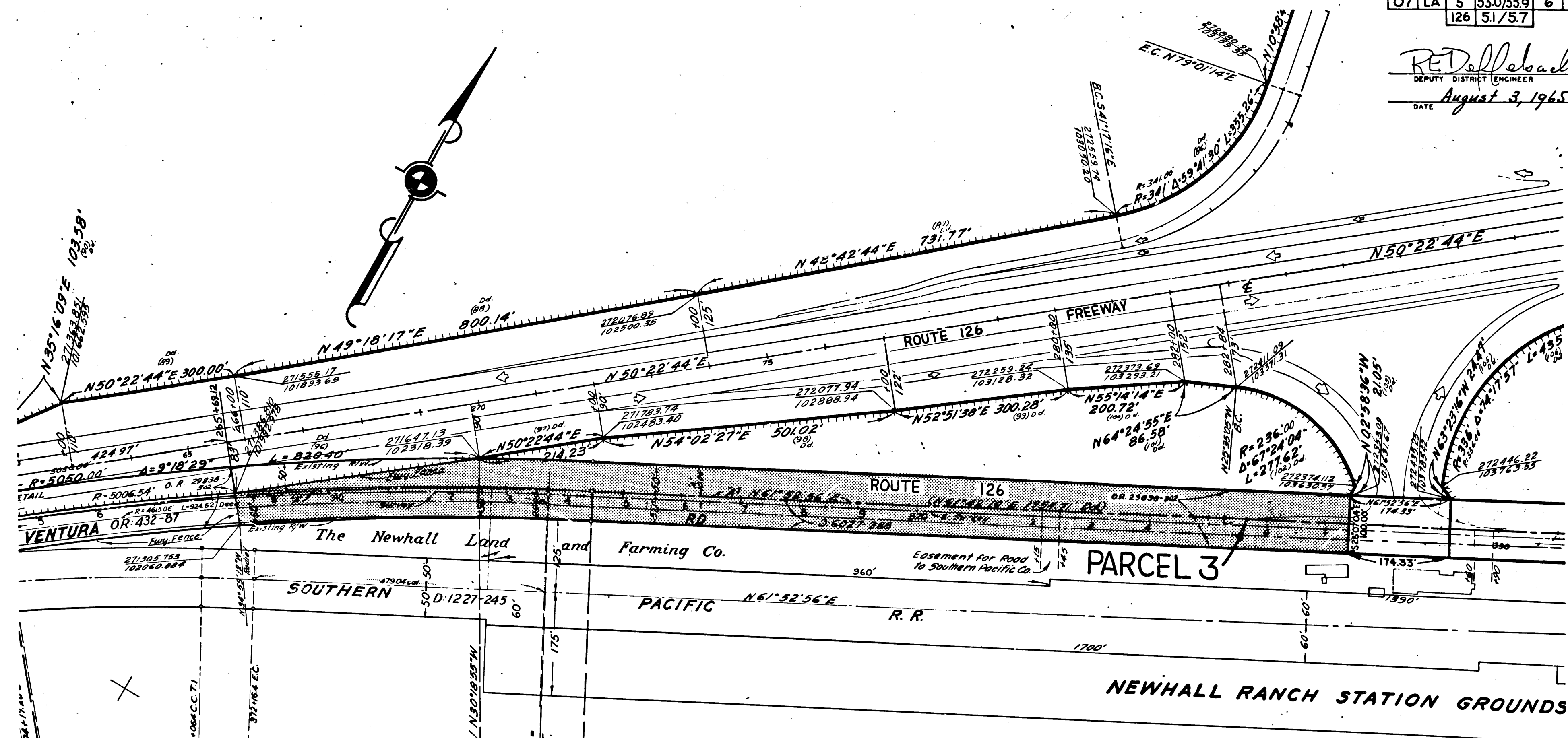


AREA TO BE RELINQUISHED SHOWN THUS [hatched pattern]
 ACCESS PROHIBITED [vertical line pattern]

REL- 431
 DWN BY D.A.C.
 CLC BY F.M.
 CKD BY J.S.
 BASE MAP NO'S
 F 1309
 F 1308
 REF. MAP NO'S
 CCM 26.9, 25.1
 AS BUILT NO'S
 155-15



RE Dellbach
 DEPUTY DISTRICT ENGINEER
 DATE August 3, 1965



Survey
 $\Delta = 11^\circ 30' 20''$
 $R = 4755'$
 $T = 479.04'$
 $L = 954.85'$

A
 $\Delta = 11^\circ 30' 20''$
 $R = 5000'$
 $T = 503.72'$
 $L = 1004.05'$

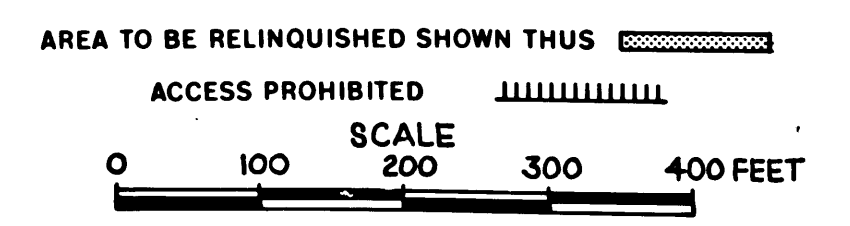
RR $\Delta = 11^\circ 27' 30''$ meas.
 $11^\circ 28' 00''$ rec.

COUNTY OF LOS ANGELES

2398
 RECORDED
 AT REQUEST OF OWNER
 DEPT. OF PUBLIC WORKS
 AUG. 3, 1965
 4:18 P.M.
 RAY E. LEE
 COUNTY RECORDER P.P. 6
 BY [Signature]

INTERSTATE
 STATE OF CALIFORNIA
 HIGHWAY TRANSPORTATION AGENCY
 DEPARTMENT OF PUBLIC WORKS
 DIVISION OF HIGHWAYS
 PROPOSED RELINQUISHMENT
 TO THE
 COUNTY OF LOS ANGELES

NOTE:
 'A' Bearings, Distances and Stations
 are based on 1960 Survey.



REL- 431
 D-TN BY D.A.C.
 C-LC BY F.M.
 CKD BY J.S.
 BASE MAP NO'S
 F 1309
 F 1308
 REF. MAP NO'S
 C.N. 26, 2, 25, 1
 AS BUILT NO'S
 155-15