

STATE OF CALIFORNIA
HIGHWAY TRANSPORTATION AGENCY
DEPARTMENT OF PUBLIC WORKS
DIVISION OF HIGHWAYS

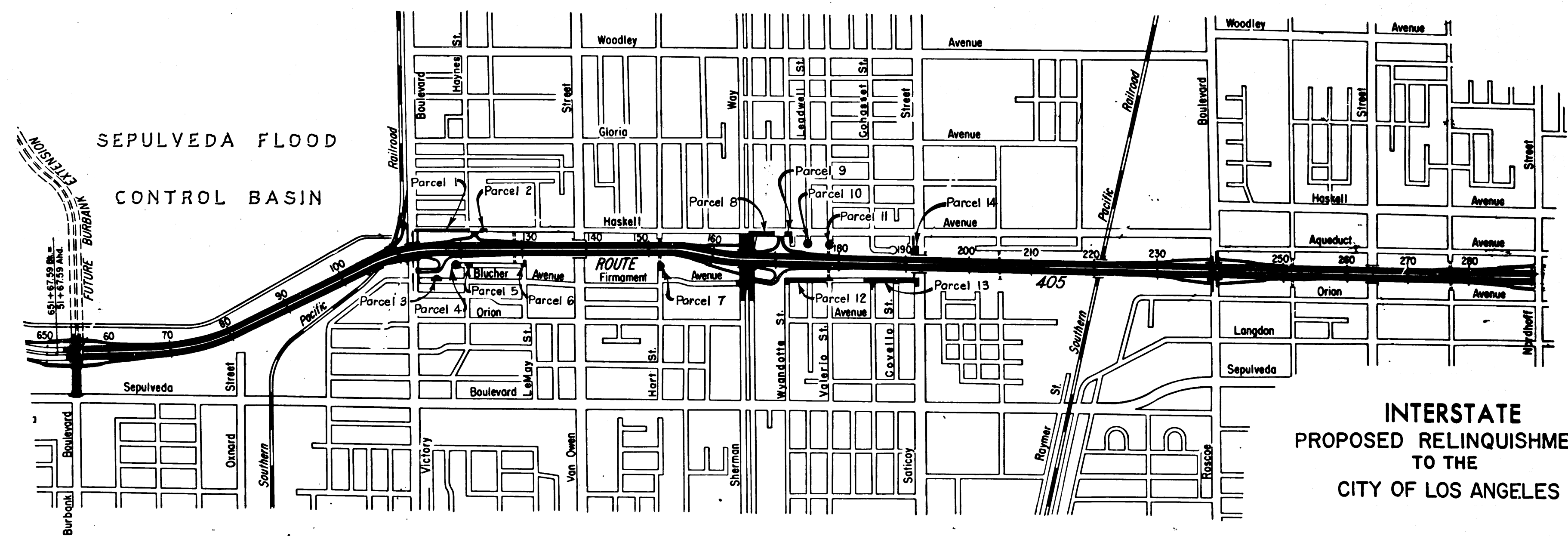
RIGHT OF WAY MAPS OF
STATE HIGHWAY

In Los Angeles County in Los Angeles between 0.4 mile south
of Burbank Boulevard and Nordhoff Street

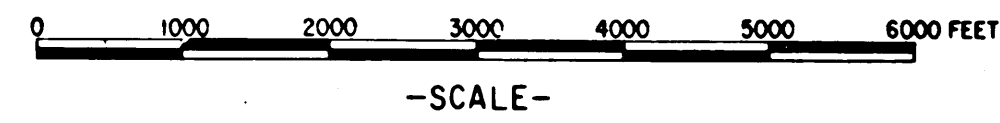
BOOK 2		PAGE 26	
DIST.	COUNTY	ROUTE	POST MILES
7	L.A.	405	40.3-44.7
SHEET No.			TOTAL SHEETS
1			7

F. E. Dellabach
DEPUTY DISTRICT ENGINEER
DATE *August 5, 1965*

2766
RECORDED
AT REQUEST OF OWNER
DEPT. OF PUBLIC WORKS
AUG. 12, 1965
59 PAST 8 AM.
IN BOOK 2
AT PAGE 26
OF STATE HIGHWAY MAPS
LOS ANGELES COUNTY, CALIF.
RAY E. LEE
COUNTY RECORDER
BY *[Signature]* FREE
Deputy



**INTERSTATE
PROPOSED RELINQUISHMENT
TO THE
CITY OF LOS ANGELES**



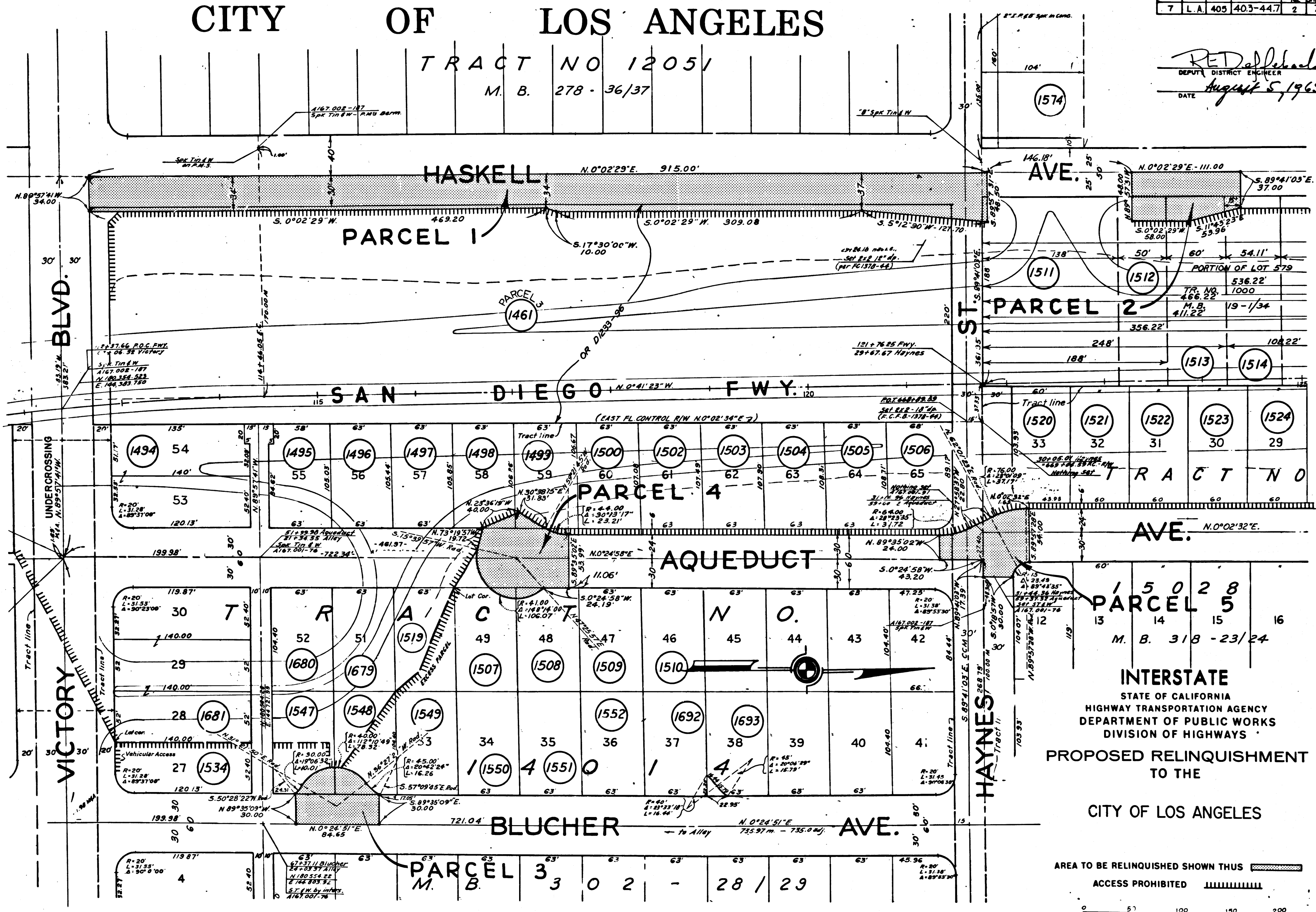
REL-415
DWN BY *R.C.*
C'LC BY *EW*
CRD BY *I.D.*
BASE MAP NO'S
F-1939 F-1:41
REF MAP NO'S
CCM'S 167.45
167.46 & 167.47
AS BUILT NO'S
149-15 & 139-17

CITY OF LOS ANGELES

TRACT NO 12051
M. B. 278 - 36/37

BOOK 2 PAGE 27	
DIST. COUNTY ROUTE.	POST MILES. SHEET TOTAL SHEETS
7 L.A. 405	40.3-44.7 2 7

RED DeLoach
DEPUTY DISTRICT ENGINEER
DATE August 5, 1965



2766

RECORDED AT REQUEST OF DEPT. OF PUBLIC WORKS AUG. 13, 1965 59 PAGES 8 A.M.

IN BOOK 27

OF MAP-RECORDS - LOS ANGELES COUNTY, CALIF. RAY E. LEE COUNTY RECORDER BY [Signature] P. 2

REL-415

DRN BY R.C.

C.L.C. BY E.W.W.

CRD BY J.D.

BASE MAP NOS. E-1939, F-1941

REF. MAP NOS. CCM 167.45 #167.46

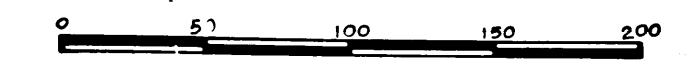
AS BUILT NOS. 149-15 & 139-17

INTERSTATE
STATE OF CALIFORNIA
HIGHWAY TRANSPORTATION AGENCY
DEPARTMENT OF PUBLIC WORKS
DIVISION OF HIGHWAYS

PROPOSED RELINQUISHMENT TO THE
CITY OF LOS ANGELES

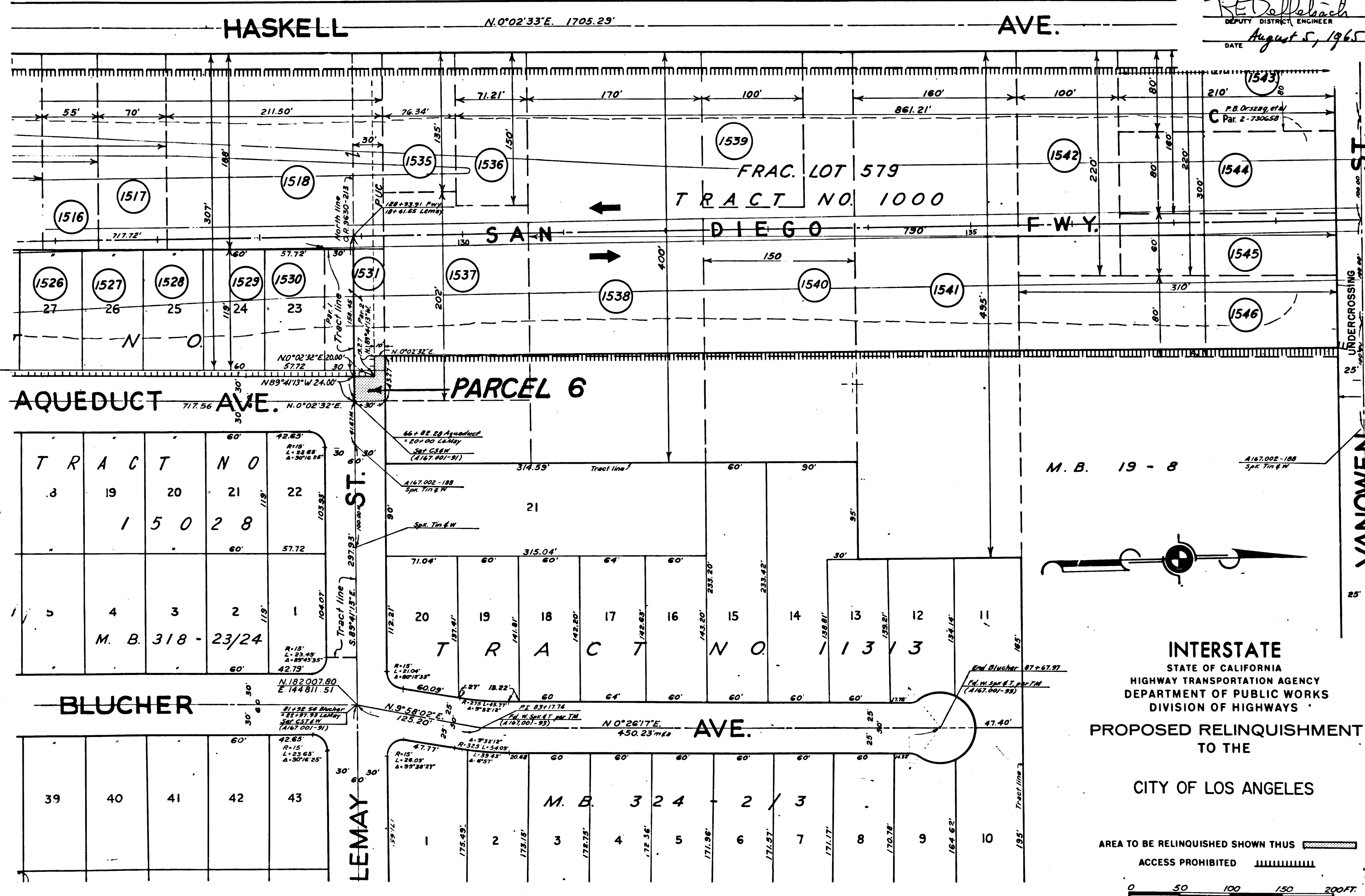
AREA TO BE RELINQUISHED SHOWN THUS [Hatched Box]

ACCESS PROHIBITED [Dashed Line]



DIST.	COUNTY	ROUTE	POST MILES.	SHEET No.	TOTAL SHEETS
7	L.A.	405	40.3-44.7	3	7

R. E. DellaBach
 DEPUTY DISTRICT ENGINEER
 DATE August 5, 1965



RECORDED
 AT REQUEST OF
 DEPT. OF PUBLIC WORKS
 AUG. 12 MIN. 1965
 59 PAST 8 A.M.

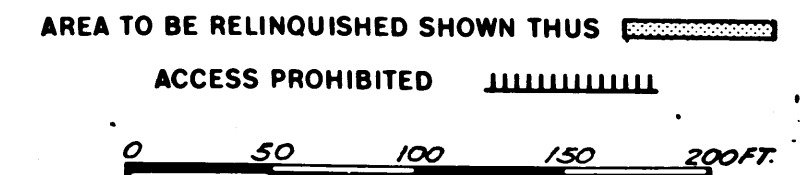
IN BOOK 28
 AT PAGE 28
 OF RECORDS
 LOS ANGELES COUNTY, CALIF.
 RAY E. LEE
 COUNTY RECORDER
 P.P. 3

REL-415
 DWN BY RSD
 C'LC BY EMM
 CKD BY J.D.
 BASE MAP NO'S
 E-1939, F-1941

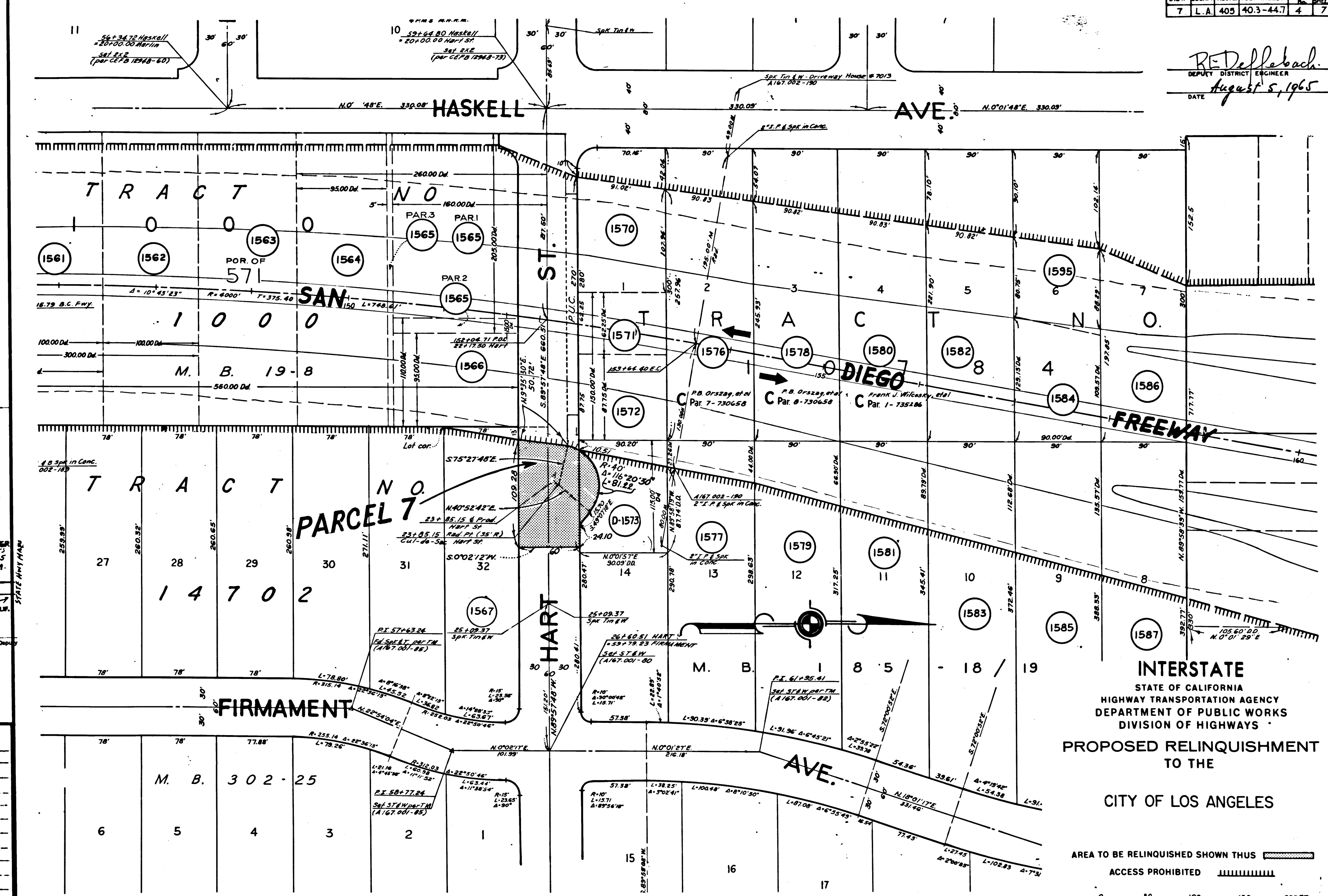
REF. MAP NO'S
 CCM 167, 168

AS BUILT NO'S
 139-17

INTERSTATE
 STATE OF CALIFORNIA
 HIGHWAY TRANSPORTATION AGENCY
 DEPARTMENT OF PUBLIC WORKS
 DIVISION OF HIGHWAYS
 PROPOSED RELINQUISHMENT
 TO THE
 CITY OF LOS ANGELES



R. DeLobach
 DEPUTY DISTRICT ENGINEER
 DATE August 5, 1965

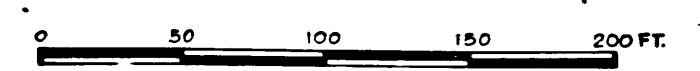


RECORDED
 AT REQUEST OF
 DEPT. OF PUBLIC WORKS
 LOS ANGELES COUNTY, CALIF.
 RAY E. LEE
 COUNTY RECORDER
 59 PAGE 8 A.M.
 29
 8/4

REL-415
 DRN BY RSD
 C.L.C. BY E.M.M.
 CKD BY I.D.
 BASE MAP NO'S
 F-1939, F-1941
 REF. MAP NO'S
 CCM 167-46
 AS BUILT NO'S
 39-17

INTERSTATE
 STATE OF CALIFORNIA
 HIGHWAY TRANSPORTATION AGENCY
 DEPARTMENT OF PUBLIC WORKS
 DIVISION OF HIGHWAYS
 PROPOSED RELINQUISHMENT
 TO THE
 CITY OF LOS ANGELES

AREA TO BE RELINQUISHED SHOWN THUS [Hatched Box]
 ACCESS PROHIBITED [Dashed Line]



DIST.	COUNTY	ROUTE	POST MILES.	SHEET	TOTAL SHEETS
7	L.A.	405	403-44.7	5	7

2706
 RECORDED
 AT REQUEST OF COUNTY DEPT. OF PUBLIC WORKS
 AUG. 12, 1965
 59 MIN. 8 A.M.
 IN BOOK 2
 AT PAGE 30
 OF MAP-RECORDS STATE HWY MAPS
 LOS ANGELES COUNTY, CALIF.
 RAY E. TEE
 COUNTY RECORDER
 Deputy

R. D. DeLoach
 DEPUTY DISTRICT ENGINEER
 August 5, 1965

RANCHO
 CITY OF + LOS ANGELES +

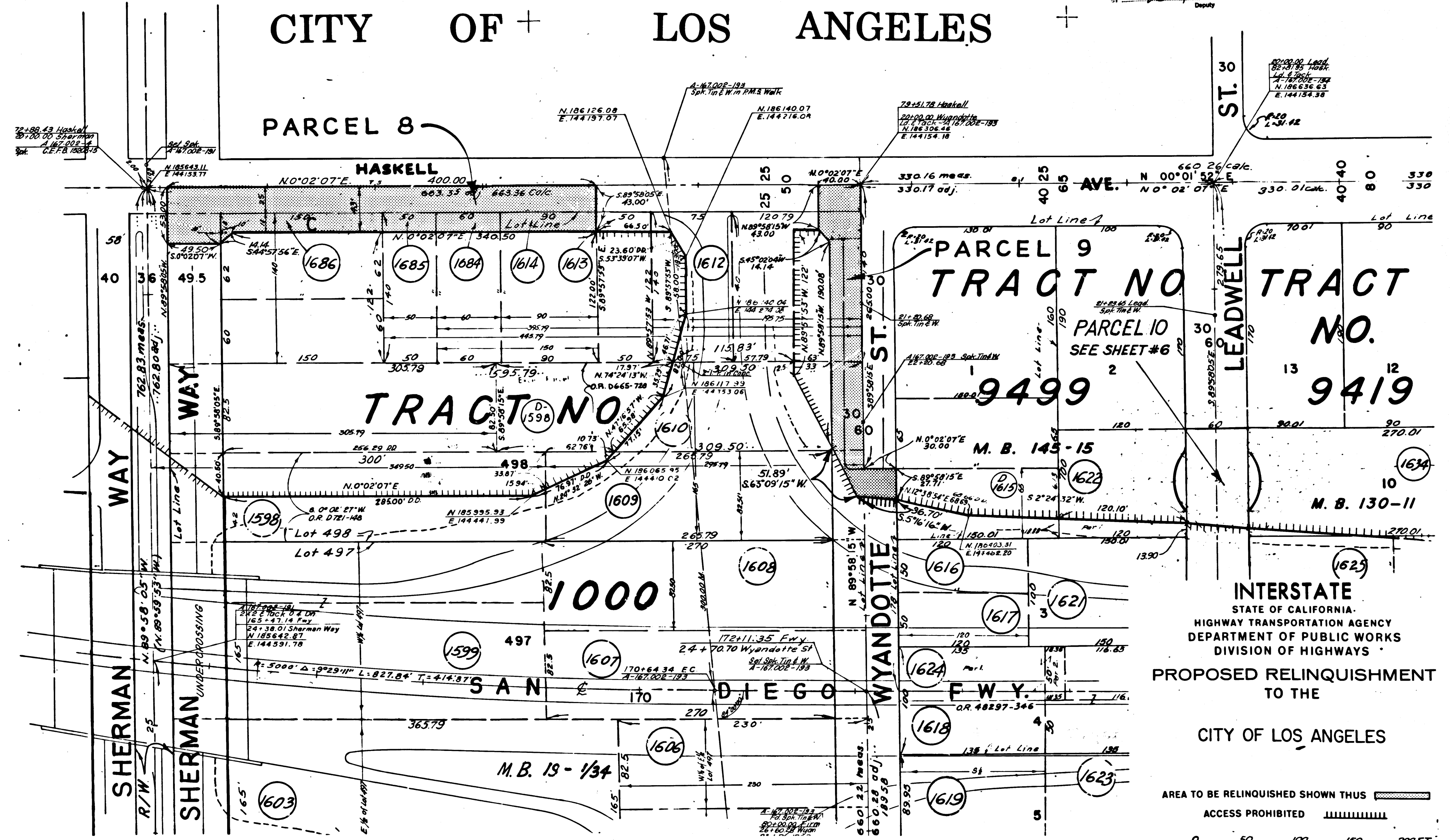
PARCEL 8

PARCEL 9
 TRACT NO. 9499

TRACT NO. 9419

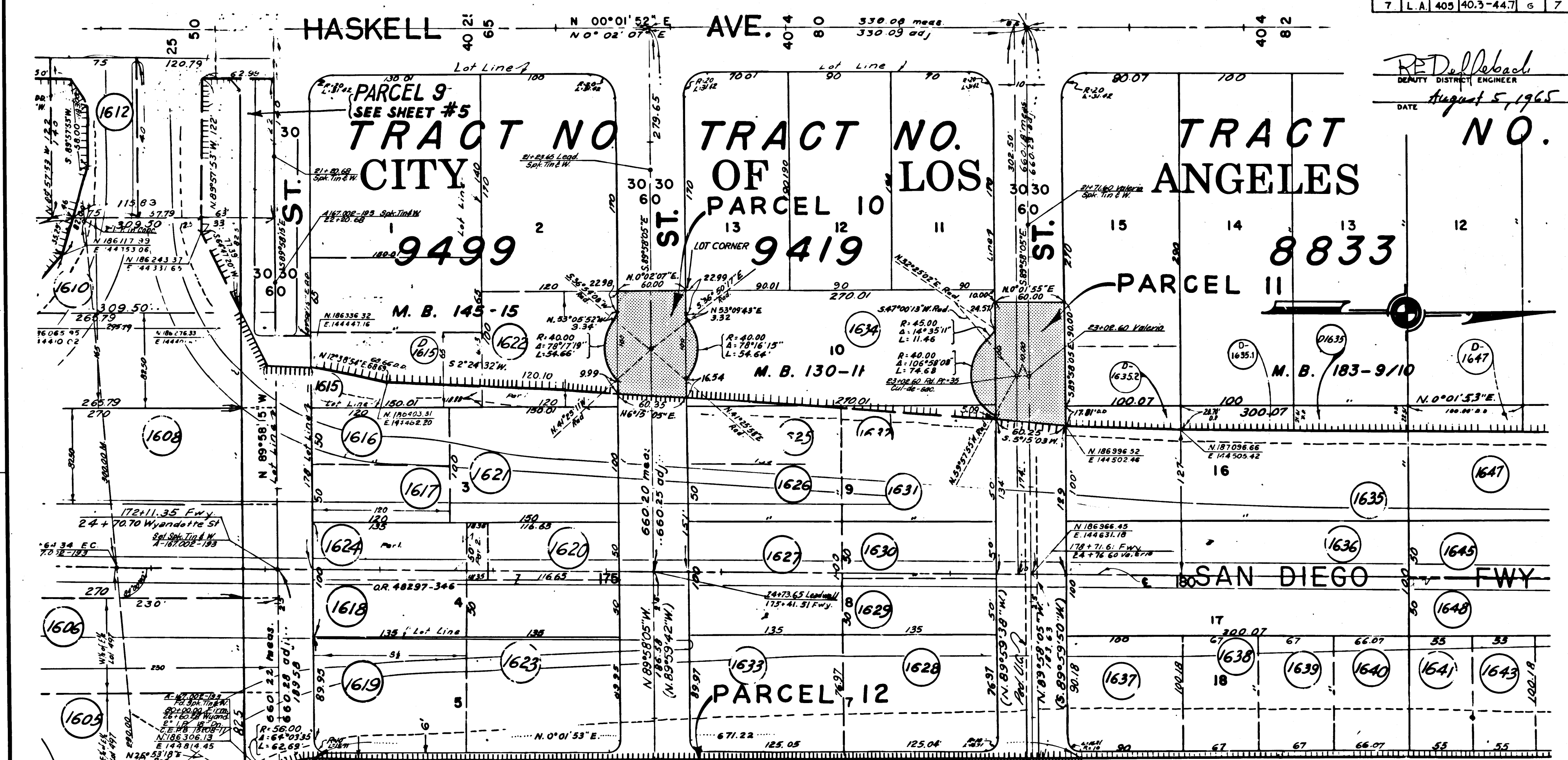
INTERSTATE
 STATE OF CALIFORNIA
 HIGHWAY TRANSPORTATION AGENCY
 DEPARTMENT OF PUBLIC WORKS
 DIVISION OF HIGHWAYS
 PROPOSED RELINQUISHMENT
 TO THE
 CITY OF LOS ANGELES

AREA TO BE RELINQUISHED SHOWN THUS [Hatched Box]
 ACCESS PROHIBITED [Dashed Line]



REL-415
 DRN BY R.C.
 CLC BY ENK
 CKD BY J.D.
 BASE MAP NOS.
 E-1939, F-1941
 REF. MAP NOS.
 CCM 167.47
 AS BUILT NOS.
 139-17

DIST.	COUNTY	ROUTE	POST MILES.	SHEET TOTAL
7	L.A.	405	40.3-44.7	6 7



RE DeLoach
 DEPUTY DISTRICT ENGINEER
 DATE August 5, 1965

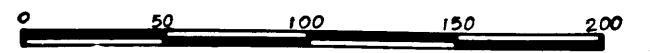
INTERSTATE
 STATE OF CALIFORNIA
 HIGHWAY TRANSPORTATION AGENCY
 DEPARTMENT OF PUBLIC WORKS
 DIVISION OF HIGHWAYS
 PROPOSED RELINQUISHMENT
 TO THE
 CITY OF LOS ANGELES

AREA TO BE RELINQUISHED SHOWN THUS [hatched pattern]
 ACCESS PROHIBITED [hatched pattern]

REL-415
 DWN BY R.C.
 CLC BY E.W.W.
 CKD BY I.D.
 BASE MAP NO'S
 F-1939, F-1941
 REF. MAP NO'S
 CCM 167-47
 AS BUILT NO'S
 139-17

1611	Santiago A. Democastel	Relph E. Shupe
1612	John L. Johnson	Walker Thompson et al.
1613	Walter Thompson et al.	Joseph L. Eaton et al.
1614	H. E. Sciulli	Wale M. Hays et al.

RECORDED
 AT REQUEST OF [blank]
 DEPT. OF PUBLIC WORKS
 AUG. 12, 1965
 59 PAST 8 A.M.
 IN BOOK 2
 AT PAGE 31
 OF MAP-RECORDED STATE HWY MAPS
 LOS ANGELES COUNTY, CALIF.
 RAY E. LEE
 COUNTY RECORDER
 BY [signature]



DIST	COUNTY	ROUTE	POST MILES.	SHEET No.	TOTAL SHEETS
7	L.A.	405	40.3-44.7	7	7

R. D. Doffelbach
 DEPUTY DISTRICT ENGINEER
 DATE August 5, 1965

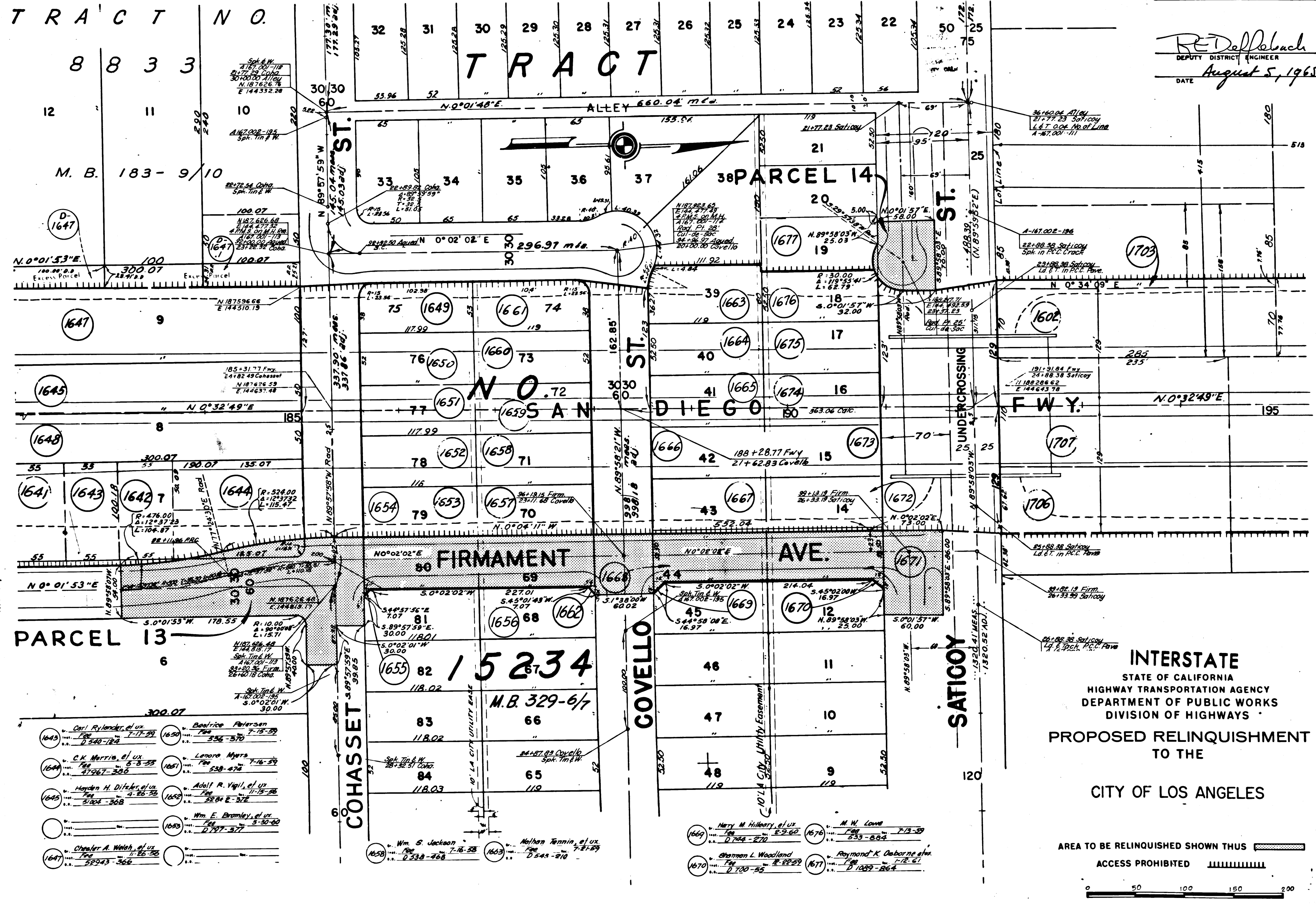
TRACT NO.

8833

TRACT

M. B. 183-9/10

PARCEL 14



RECORDED
 AT REQUEST OF OWNER
 DEPT. OF PUBLIC WORKS
 AUG. 12 1965
 5:47 PM
 IN BOOK 2
 AT PAGE 32
 OF MAP-RECORDS
 LOS ANGELES COUNTY, CALIF.
 RAY E. LEE
 COUNTY RECORDER
 717

REL-415
 DRN BY R.C.
 CLC BY ENW
 CKD BY J.D.
 BASE MAP NOS.
 F-1939, F-1941
 REF. MAP NOS.
 CCM 167.47
 AS BUILT NOS.
 139-17

PARCEL 13

1643	Carl Rylander, et ux.	1650	Barrice Peterson
1644	C.K. Morris, et ux.	1651	Lenore Myers
1645	Hayden H. Ditzler, et ux.	1652	Adolf R. Vigil, et ux.
1646	Wm. E. Bromley, et ux.	1653	Wm. S. Jackson
1647	Chester A. Welch, et ux.	1654	Nathan Termin, et ux.

15234
 M.B. 329-6/7

INTERSTATE
 STATE OF CALIFORNIA
 HIGHWAY TRANSPORTATION AGENCY
 DEPARTMENT OF PUBLIC WORKS
 DIVISION OF HIGHWAYS
 PROPOSED RELINQUISHMENT
 TO THE
 CITY OF LOS ANGELES

AREA TO BE RELINQUISHED SHOWN THUS [shaded box]
 ACCESS PROHIBITED [hatched box]

