

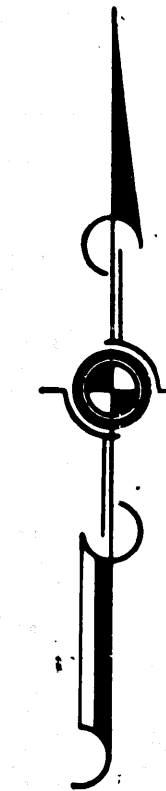
DIST	COUNTY	ROUTE	POST MILES	SHEET TOTAL
7	LA	60	0.5/2.9	1/6
			L.A. 165	00/0.8

Anthony
 DEPUTY DISTRICT ENGINEER
 DATE August 12, 1965

2775

RECORDED
 AT REQUEST OF OWNER
 DEPT. OF PUBLIC WORKS
 AUG. 18, 1965
 15 PAST 9 AM.

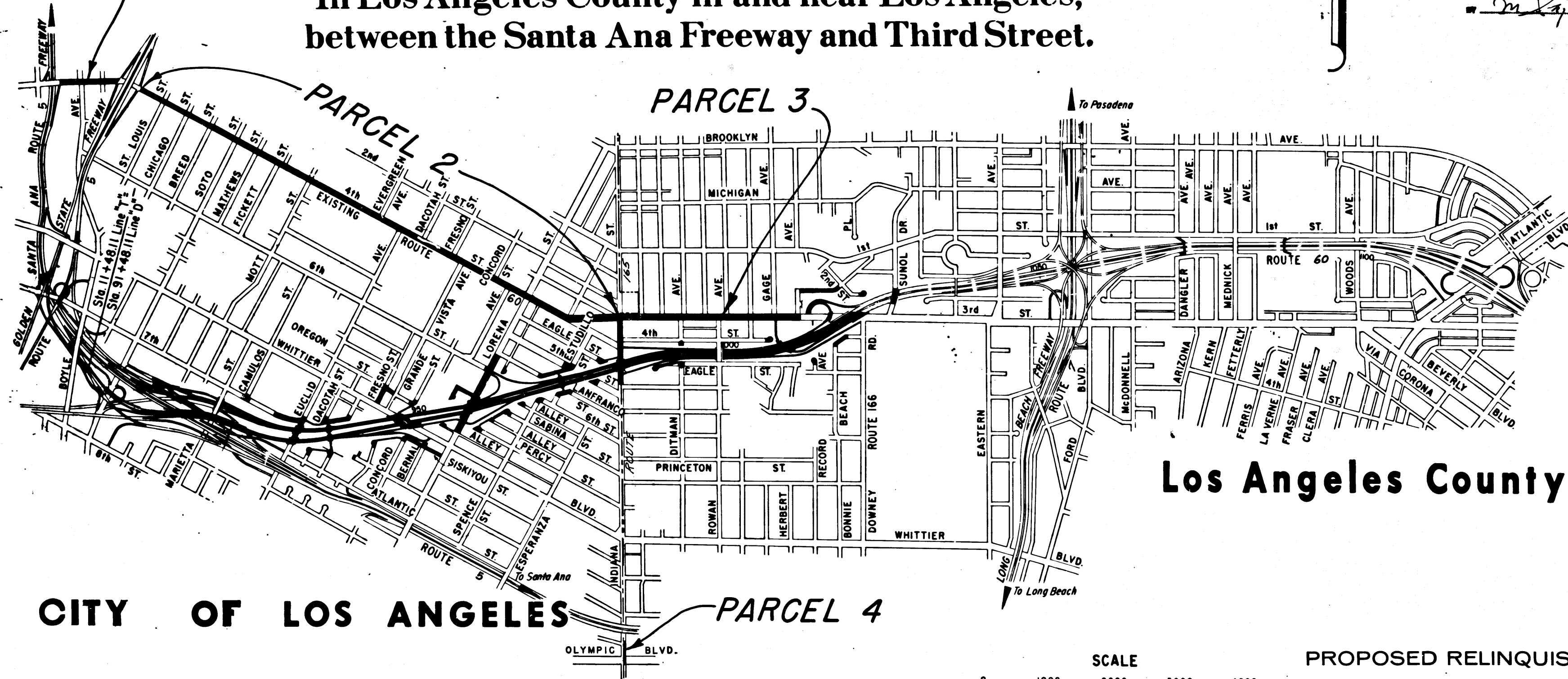
BY ORDER 33
 OF LOS ANGELES STATE HWY. MAP
 LOS ANGELES COUNTY, CALIF.
 RAY E. LEE
 COUNTY RECORDER
M. J. FREE



STATE OF CALIFORNIA
 HIGHWAY TRANSPORTATION AGENCY
 DEPARTMENT OF PUBLIC WORKS
 DIVISION OF HIGHWAYS

RIGHT OF WAY MAPS OF
STATE HIGHWAY
 In Los Angeles County in and near Los Angeles,
 between the Santa Ana Freeway and Third Street.

PARCEL 1



Los Angeles County

CITY OF LOS ANGELES

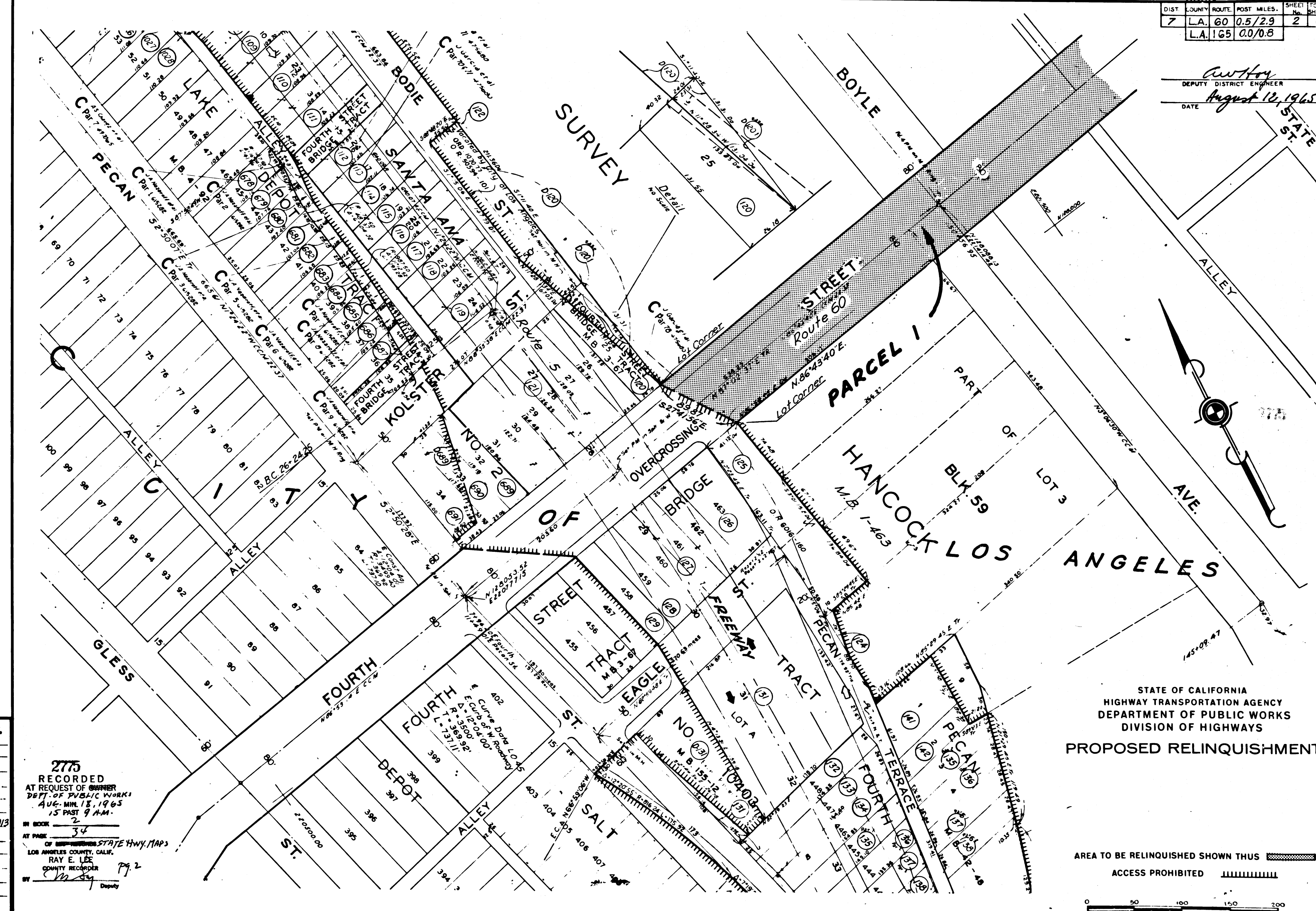


PROPOSED RELINQUISHMENT

434,
 REL-435
 DRN BY J.K.
 C/LC BY F.M.
 CK'D BY R.G.
 BASE MAP NO'S
 F-1282-F-1178
 F-2011, F-2012, F-2013
 & P-6460
 REF. MAP NO'S
 CCM 2157
 22.37
 AS BUILT NO'S
 128-15, 155-14

DIST.	COUNTY	ROUTE	POST MILES.	SHEET No.	TOTAL SHEETS
7	L.A.	60	0.5/2.9	2	6
	L.A.	165	0.0/0.8		

Anthony
 DEPUTY DISTRICT ENGINEER
 DATE August 12, 1965

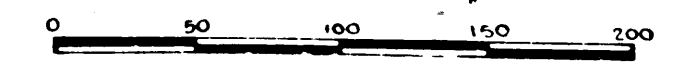


434.
 REL-435
 DRN BY RSD
 C/LC BY EHM
 CKD BY R.G.
 BASE MAP NO'S
 F1282, F1179,
 F2011, F2012, F2013
 & P 6460
 REF. MAP NO'S
 CCM 22.97
 AS BUILT NO'S
 155-14

2775
 RECORDED
 AT REQUEST OF ENGINEER
 DEPT. OF PUBLIC WORKS
 AUG. 18, 1965
 15 PAST 9 A.M.
 IN BOOK 2
 AT PAGE 34
 OF LOS ANGELES STATE HWY. MAPS
 LOS ANGELES COUNTY, CALIF.
 RAY E. LEE
 COUNTY RECORDER
 Pg. 2
 Deputy

STATE OF CALIFORNIA
 HIGHWAY TRANSPORTATION AGENCY
 DEPARTMENT OF PUBLIC WORKS
 DIVISION OF HIGHWAYS
 PROPOSED RELINQUISHMENT

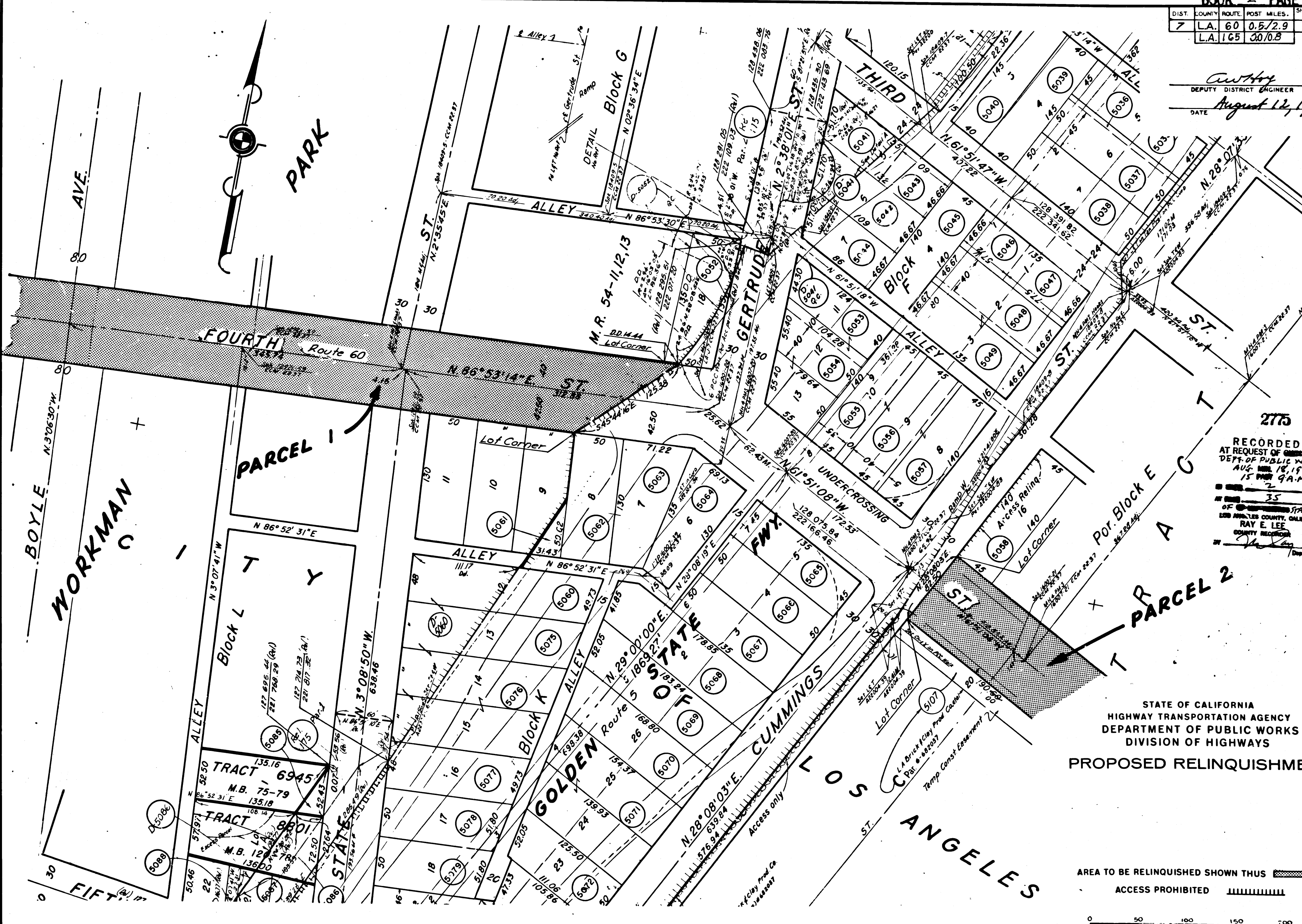
AREA TO BE RELINQUISHED SHOWN THUS 
 ACCESS PROHIBITED 



DIST.	COUNTY	ROUTE	POST MILES	SHEET NO.	TOTAL SHEETS
7	L.A.	60	0.5/2.9	3	6
	L.A.	165	30/0.8		

Deputy District Engineer

DATE August 12, 1965



2775
 RECORDED
 AT REQUEST OF
 DEPT. OF PUBLIC WORKS
 AUG. 18, 1965
 15 PM 9 A.M.
 35
 OF STATE HIGHWAY
 LOS ANGELES COUNTY, CALIF. MAP
 RAY E. LEE
 COUNTY RECORDER
 P. 13

STATE OF CALIFORNIA
 HIGHWAY TRANSPORTATION AGENCY
 DEPARTMENT OF PUBLIC WORKS
 DIVISION OF HIGHWAYS
 PROPOSED RELINQUISHMENT

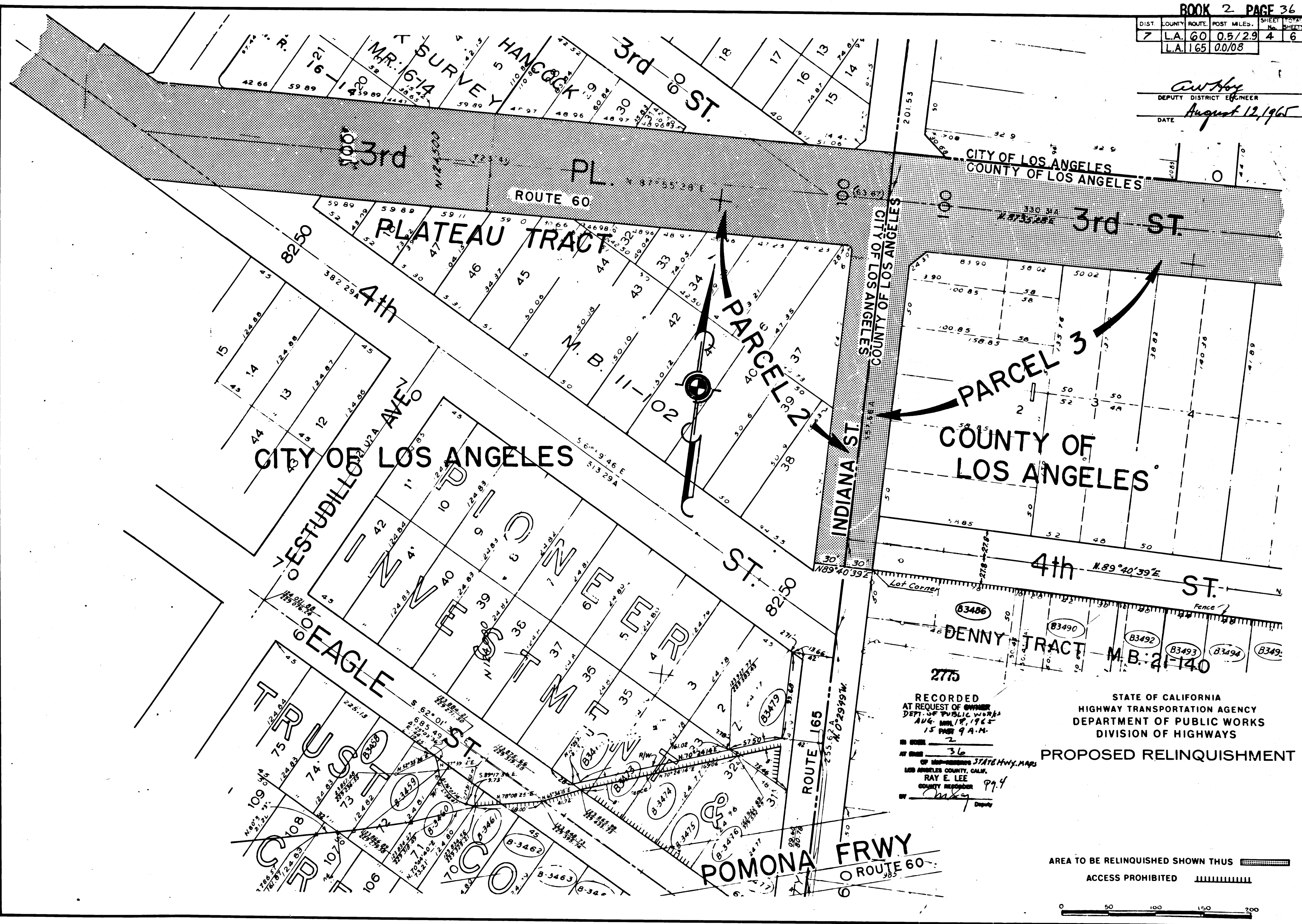
AREA TO BE RELINQUISHED SHOWN THUS 
 ACCESS PROHIBITED 



434.
 REL-435
 DRN BY B.S.D.
 CLC BY F.H.M.
 CKD BY R.G.
 BASE MAP NOS.
 E-1282, F-1179
 F2011, F2012, F2013
 & P-6460
 REF. MAP NOS.
 CCM-22-37
 215-7
 3 BUILT NO'S.
 128-13
 155-14

DIST.	COUNTY	ROUTE	POST MILES	SHEET NO.	TOTAL SHEETS
7	L.A.	60	0.5/2.9	4	6
		L.A. 165	0.0/0.8		

Carl Hays
 DEPUTY DISTRICT ENGINEER
 DATE August 12, 1965



REL- 434
 435
 DRN BY LK
 C/LC BY EHM
 CK'D BY R.C.
 BASE MAP NO'S
 F-1282, F-1778
 F-2011, F-2012, F-2013
 & P-6460
 REF. MAP NO'S
 CCM 2157
 22.37
 AS BUILT NO'S
 128-15 155-14

2775
 RECORDED
 AT REQUEST OF OWNER
 DEPT. OF PUBLIC WORKS
 AUG. 18, 1965
 15 PAGES 9 A.M.
 IN ORDER 7
 AT 36
 OF MAPS-ROADS STATE HWY. MAPS
 LOS ANGELES COUNTY, CALIF.
 RAY E. LEE
 COUNTY RECORDER
 P.P. 4
 Deputy

STATE OF CALIFORNIA
 HIGHWAY TRANSPORTATION AGENCY
 DEPARTMENT OF PUBLIC WORKS
 DIVISION OF HIGHWAYS

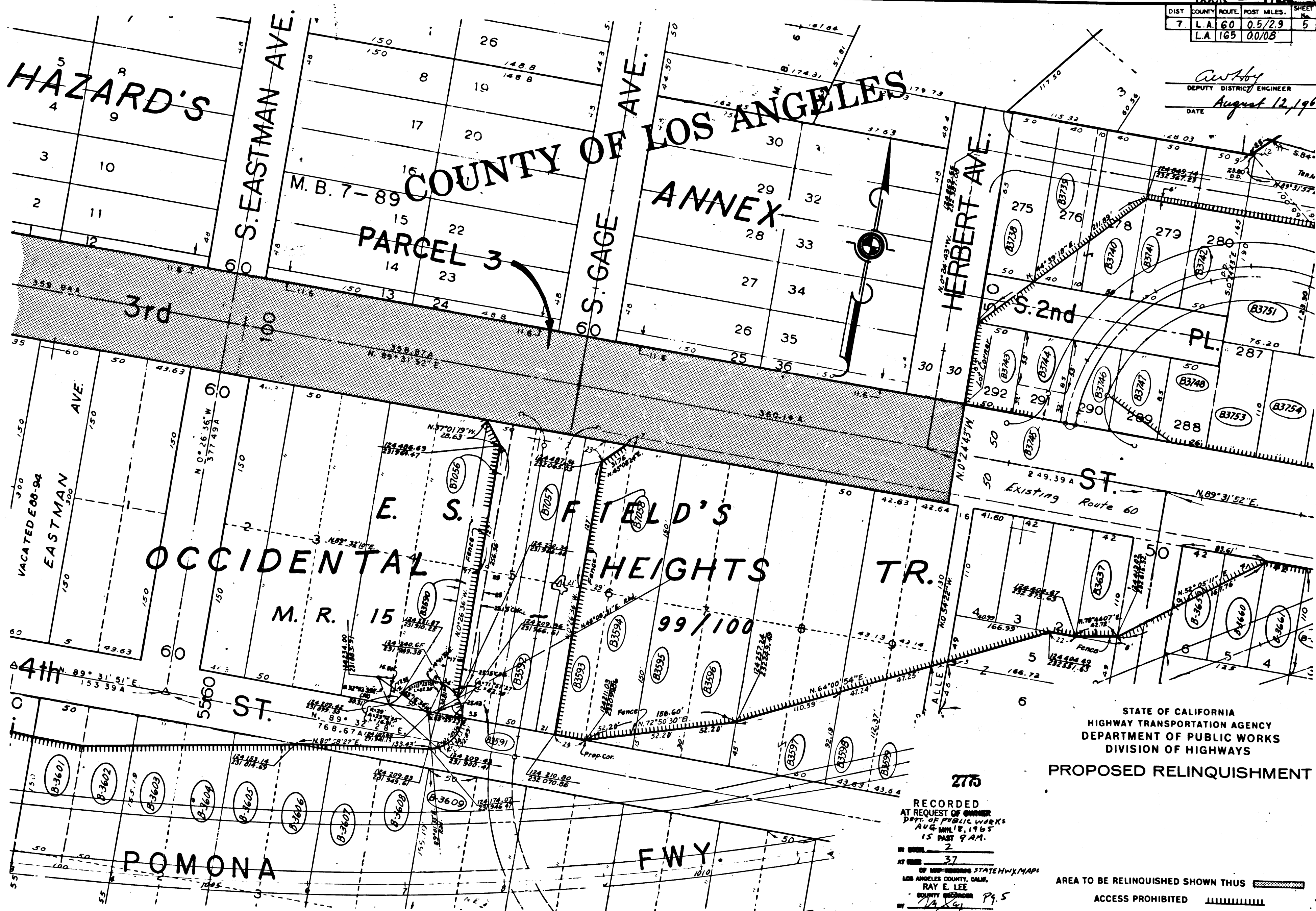
PROPOSED RELINQUISHMENT

AREA TO BE RELINQUISHED SHOWN THUS [shaded box]
 ACCESS PROHIBITED [hatched box]

0 50 100 150 200

DIST.	COUNTY	ROUTE	POST MILES	SHEET No.	TOTAL SHEETS
7	L.A.	60	0.5/2.9	5	6
	L.A.	165	0.0/0.8		

awhby
 DEPUTY DISTRICT ENGINEER
 DATE August 12, 1965



REL- 434
 435
 DWN BY J.M.
 CLC BY F.M.
 CKD BY R.G.
 BASE MAP NOS.
 E-1282, F-1779
 F-2011, F-2012, F-2013
 E-3646
 REF. MAP NOS.
 SCM 215, 7
 22, 37
 AS BUILT NO'S
 28-15, 155-1A

RECORDED
 AT REQUEST OF OWNER
 DEPT. OF PUBLIC WORKS
 AUG 18, 1965
 15 PAST 9 AM.
 BY _____
 COUNTY ENGINEER
 P. 5

STATE OF CALIFORNIA
 HIGHWAY TRANSPORTATION AGENCY
 DEPARTMENT OF PUBLIC WORKS
 DIVISION OF HIGHWAYS
 PROPOSED RELINQUISHMENT

AREA TO BE RELINQUISHED SHOWN THUS ACCESS PROHIBITED

