

BOOK 2		PAGE 39			
DIST.	COUNTY	ROUTE	POST MILES.	SHEET No.	TOTAL SHEETS
7	L.A.	405	0.0/5.6	1	16

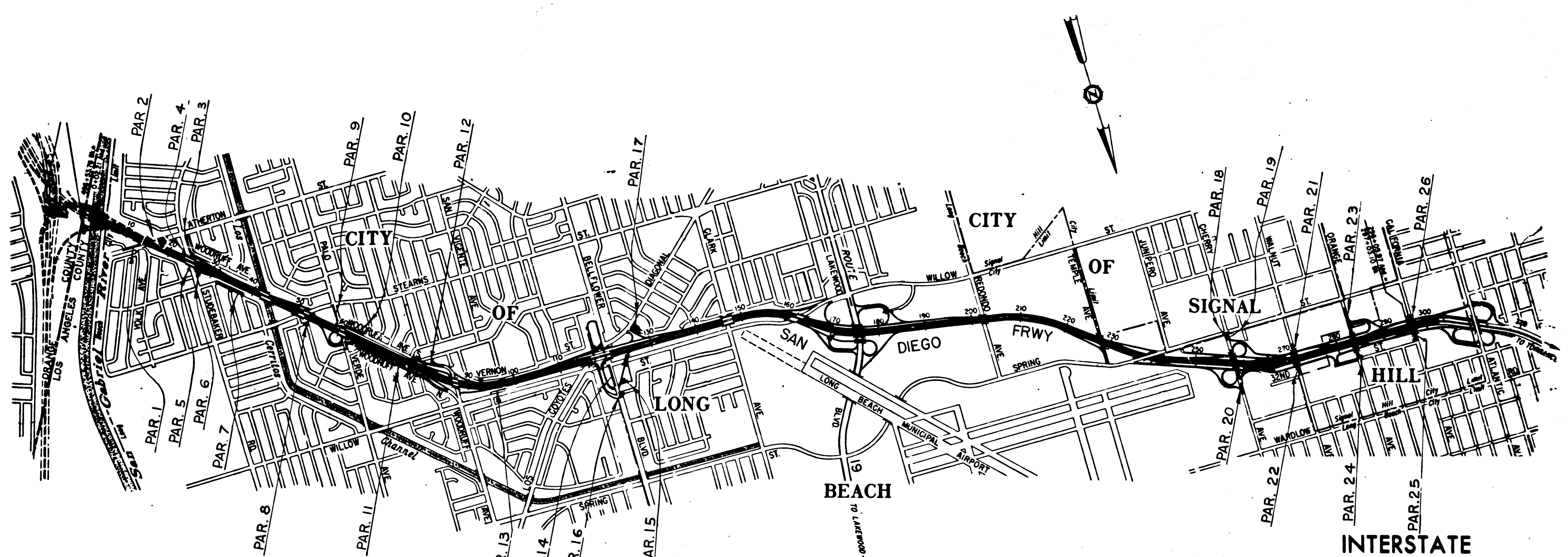
STATE OF CALIFORNIA
HIGHWAY TRANSPORTATION AGENCY
DEPARTMENT OF PUBLIC WORKS
DIVISION OF HIGHWAYS

Authey
DEPUTY DISTRICT ENGINEER
DATE August 17, 1965

RIGHT OF WAY MAPS OF
STATE HIGHWAY

In Los Angeles County in and near Long Beach and Signal Hill
between Orange County Line and 0.1 mile west of Atlantic Avenue

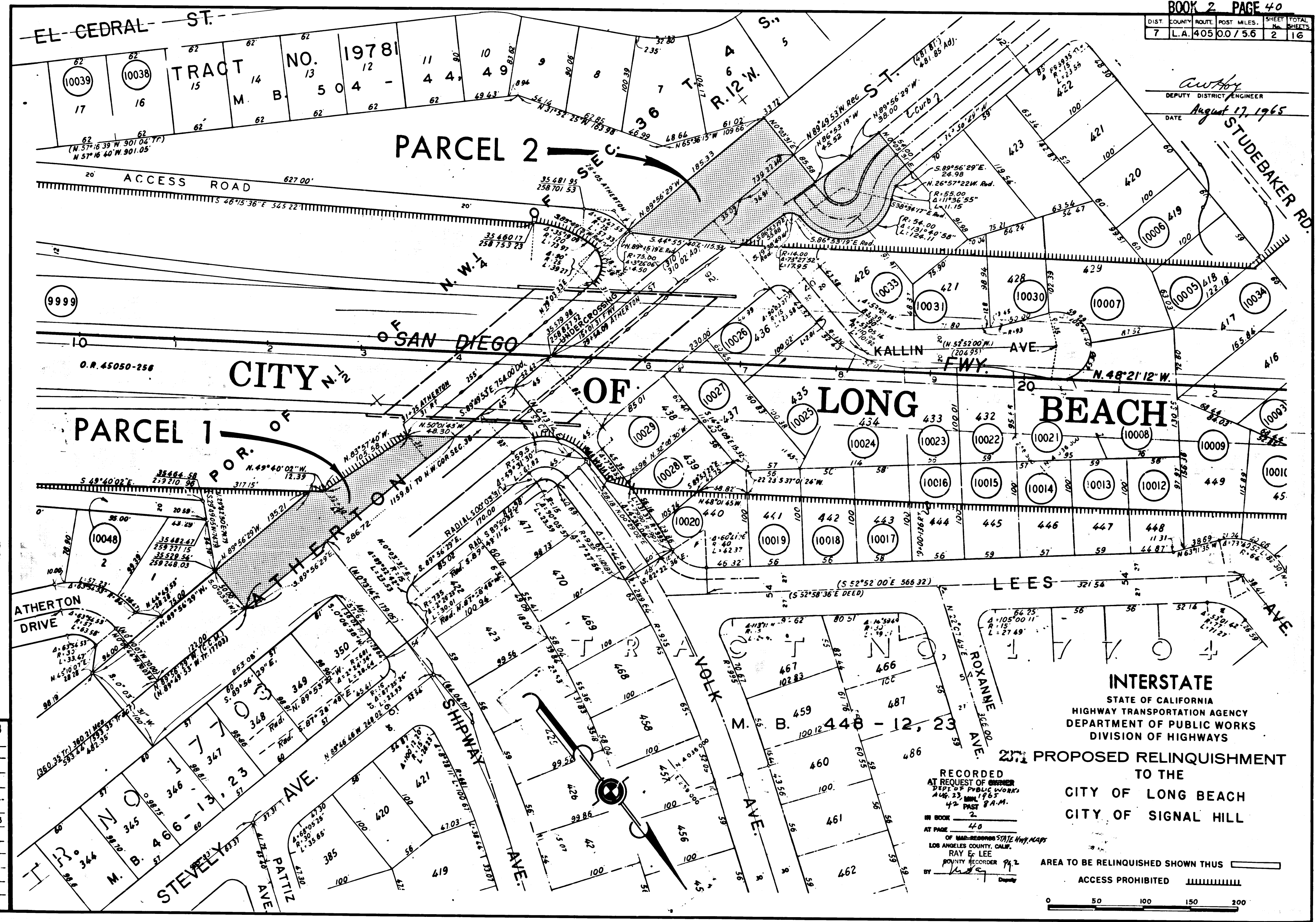
2371
RECORDED
AT REQUEST OF
DEPT. OF PUBLIC WORKS
AUG. 23, 1965
4:22 PM 8 A.M.
IN BOOK 2
AT PAGE 39
OF THE RECORDS STATE HWY. MAPS
LOS ANGELES COUNTY, CALIF.
RAY E. LEE
COUNTY RECORDER
BY *M. Kay* Deputy
FREE



INTERSTATE
PROPOSED RELINQUISHMENT
TO THE
CITY OF LONG BEACH
CITY OF SIGNAL HILL

378
REL-391
DRN BY W.M.
CLC BY *m.m.*
CKD BY *J.D.*
BASE MAP NOS.
F- 1899, 1900,
1901, 1902, 1903
& 1904
REF. MAP NOS.
C.C.M. 285.1,
285.2 & 285.3
AS BUILT NO'S.
150-10

DIST	COUNTY	ROUTE	POST MILES	SHEET No.	TOTAL SHEETS
7	L.A.	405	0.0 / 5.6	2	16



Autrey
 DEPUTY DISTRICT ENGINEER
 DATE August 17, 1965

TRACT NO. 19781
 M. B. 504 - 44 - 49
 PARCEL 2

CITY OF LONG BEACH

INTERSTATE
 STATE OF CALIFORNIA
 HIGHWAY TRANSPORTATION AGENCY
 DEPARTMENT OF PUBLIC WORKS
 DIVISION OF HIGHWAYS
 PROPOSED RELINQUISHMENT
 TO THE
 CITY OF LONG BEACH
 CITY OF SIGNAL HILL

RECORDED
 AT REQUEST OF ENGINEER
 DEPT. OF PUBLIC WORKS
 AUG. 23, 1965
 42 PAGES 8 A.M.

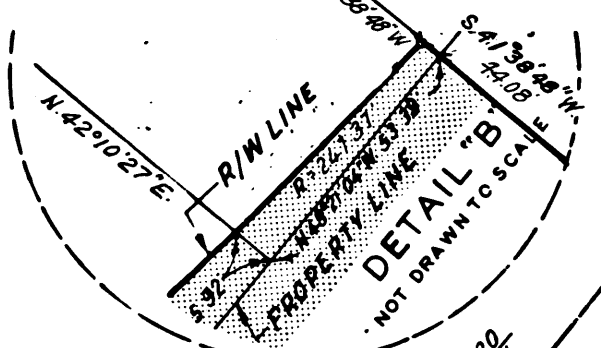
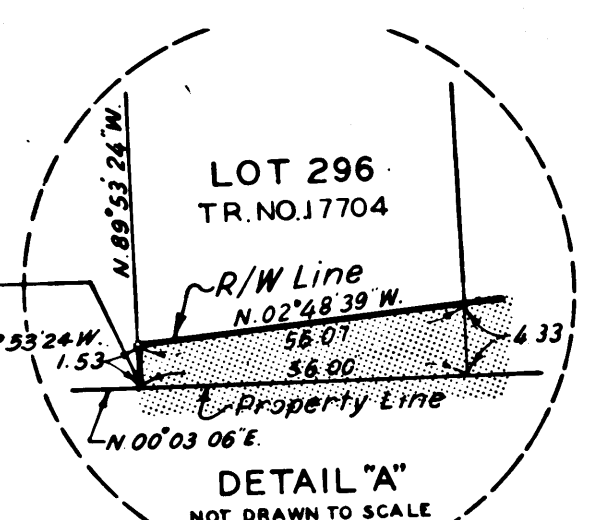
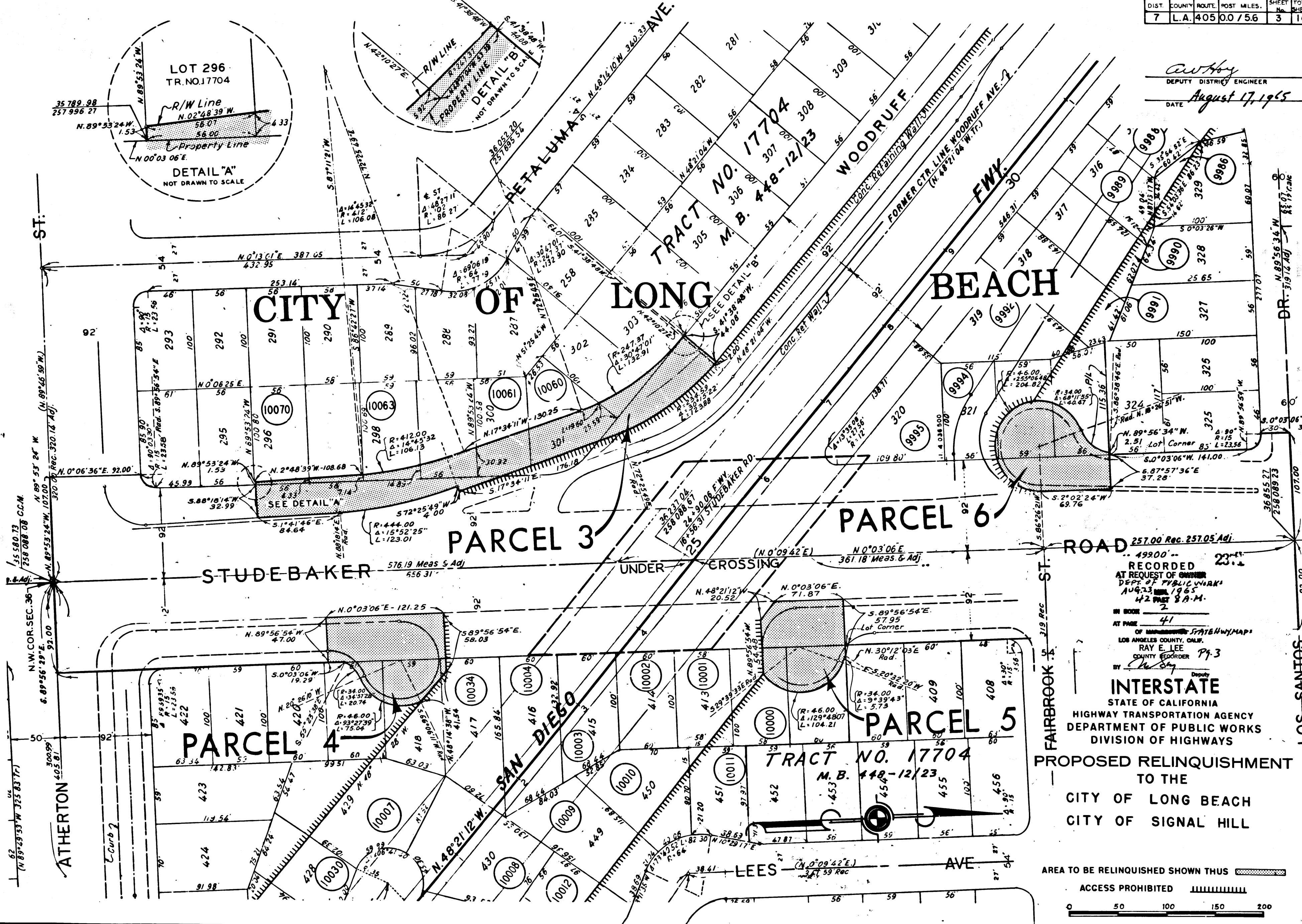
AREA TO BE RELINQUISHED SHOWN THIS ACCESS PROHIBITED



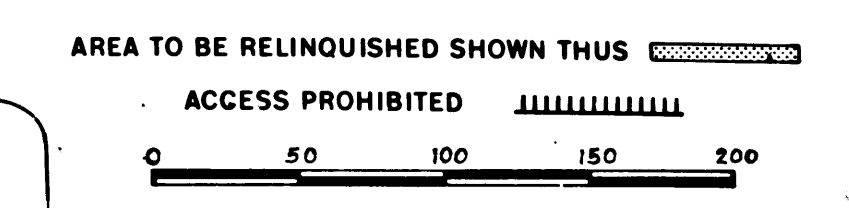
378
 REL-391
 DRN BY R.C.
 CLC BY *hoo*
 CKD BY *I.D.*
 BASE MAP NOS.
 F-1899, 1900,
 1901, 1902, 1903
 B-1904
 REF. MAP NOS.
 C.C.M. 285.1,
 285.2 & 285.3
 AS BUILT NOS.
 150-10

DIST.	COUNTY	ROUTE	POST MILES	SHEET No.	TOTAL SHEETS
7	L.A.	405	0.0/5.6	3	16

awby
 DEPUTY DISTRICT ENGINEER
 DATE August 17, 1965



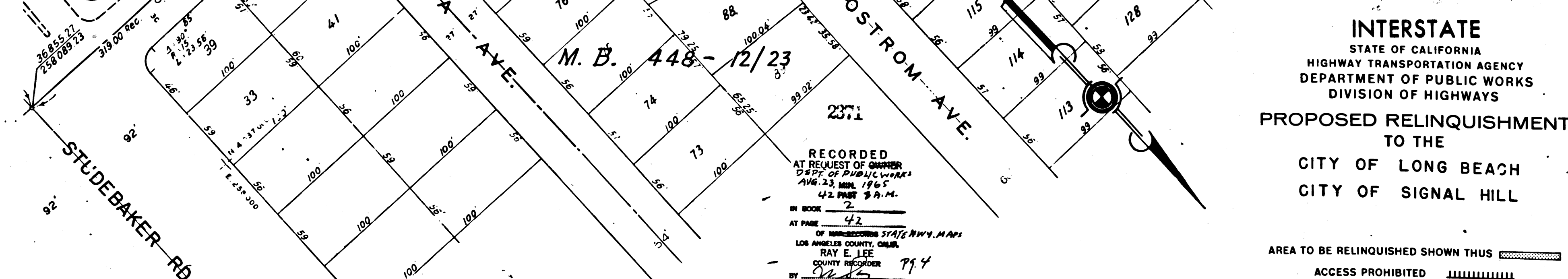
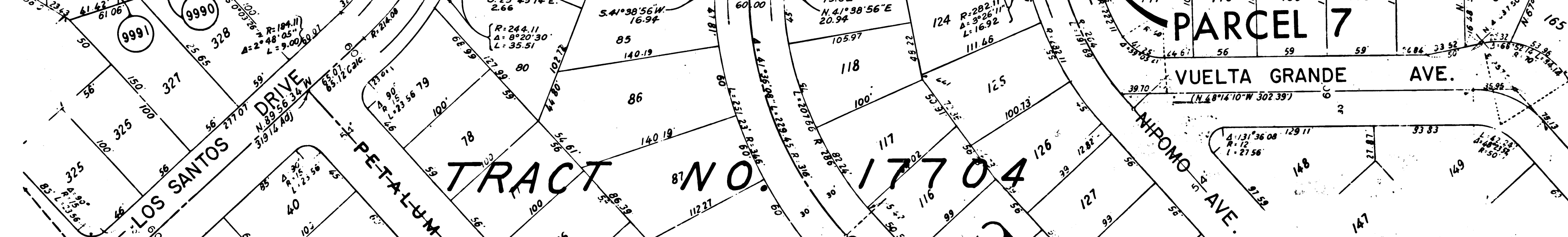
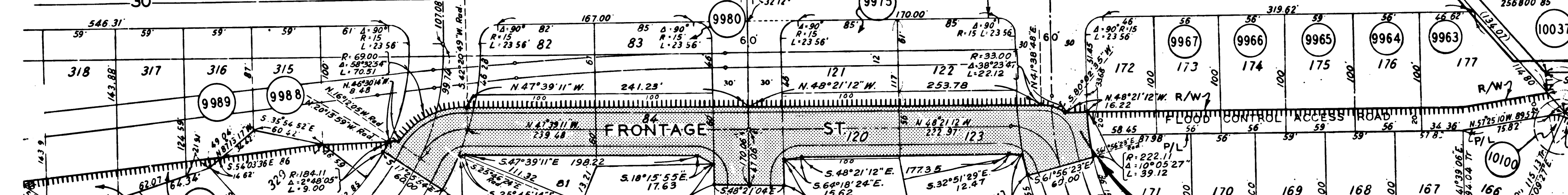
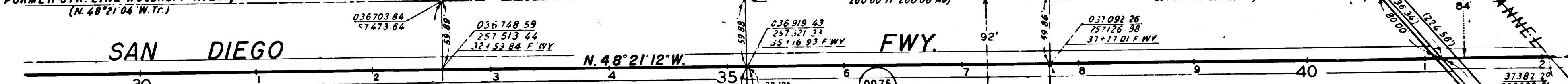
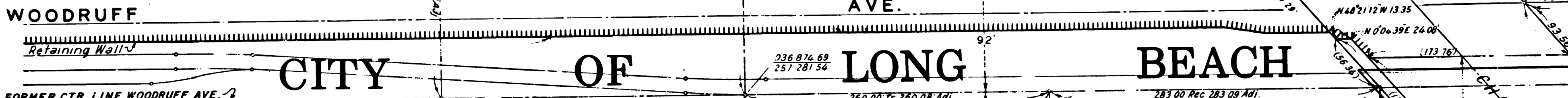
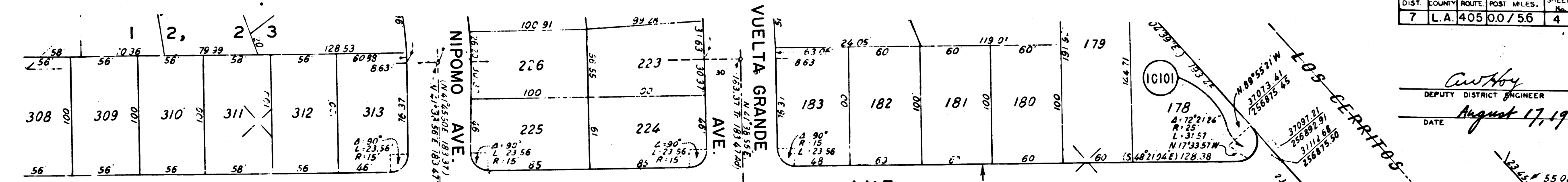
RECORDED
 AT REQUEST OF ENGINEER
 DEPT. OF PUBLIC WORKS
 AUG. 23, 1965
 42 PAGE 8 A.M.
 IN BOOK 2
 AT PAGE 41
 OF SAN FRANCISCO STATE HIGHWAY MAP
 LOS ANGELES COUNTY ONLY
 RAY E. LEE
 COUNTY ENGINEER P. 3
 BY *awby* Deputy
INTERSTATE
 STATE OF CALIFORNIA
 HIGHWAY TRANSPORTATION AGENCY
 DEPARTMENT OF PUBLIC WORKS
 DIVISION OF HIGHWAYS
**PROPOSED RELINQUISHMENT
 TO THE
 CITY OF LONG BEACH
 CITY OF SIGNAL HILL**



378
 REL-391
 DWN BY R.C.
 CLK BY J.M.
 CKD BY J.D.
 BASIC MAP NOS.
 F-899, 1900,
 1901, 1902, 1903
 B-1304
 REF. MAP NOS.
 C.C.M. 285.1,
 285.2 & 285.3
 AS BUILT NOS.
 150-10

DIST.	COUNTY	ROUTE	POST MILES.	SHEET No.	TOTAL SHEETS
7	L.A.	405	0.0 / 5.6	4	16

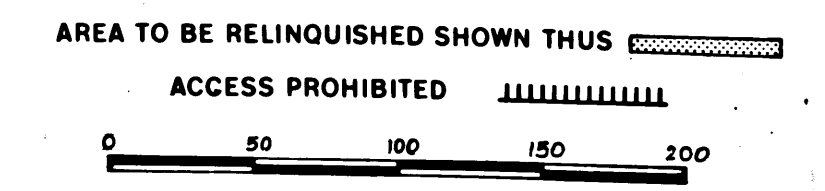
C. W. Hoyer
 DEPUTY DISTRICT ENGINEER
 DATE August 17, 1965



378
 REL-391
 DRN BY R.C.
 C.L.C. BY *mm*
 CKD BY *JD*
 BASZ MAP NOS. 1899, 1900, 1901, 1902, 1903
 1904
 REF. MAP NOS. C.C.M. 285.1, 285.2 & 285.3
 AS BUILT NOS. 150-10

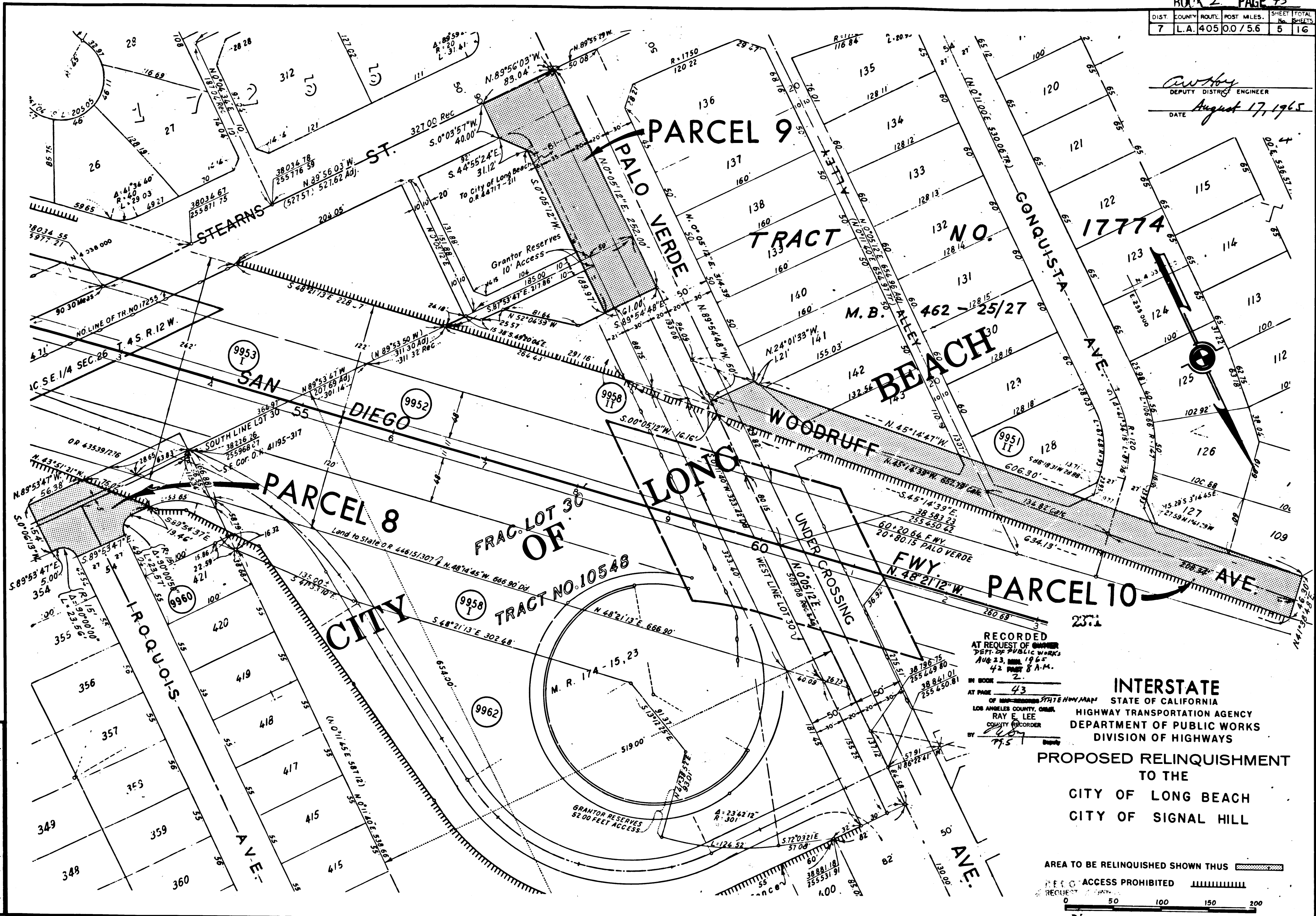
RECORDED
 AT REQUEST OF OWNER
 DEPT. OF PUBLIC WORKS
 AUG. 23, 1965
 4:22 P.M.
 IN BOOK 2
 AT PAGE 42
 OF INTERSECTION STATE HWY. MAPS
 LOS ANGELES COUNTY, CALIF.
 RAY E. LEE
 COUNTY RECORDER
 BY *[Signature]* Deputy

INTERSTATE
 STATE OF CALIFORNIA
 HIGHWAY TRANSPORTATION AGENCY
 DEPARTMENT OF PUBLIC WORKS
 DIVISION OF HIGHWAYS
 PROPOSED RELINQUISHMENT
 TO THE
 CITY OF LONG BEACH
 CITY OF SIGNAL HILL



DIST.	COUNTY	ROUTE	POST MILES.	SHEET NO.	TOTAL SHEETS
7	L.A.	405	0.0 / 5.6	5	16

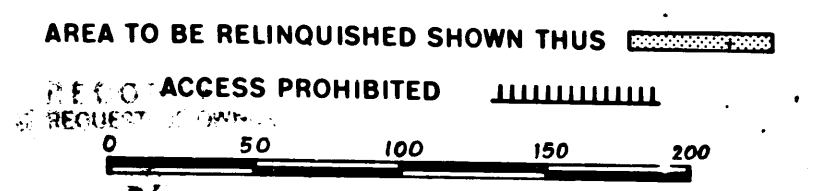
Anthony
 DEPUTY DISTRICT ENGINEER
 DATE August 17, 1965



378
 REL-391
 DRN BY V. M.
 C.L.C. BY [Signature]
 C.K.D. BY J.D.
 BASE MAP NOS.
 F-1699 1900,
 1901, 1902, 1903
 & 1904
 REF. MAP NOS.
 C.C.N. 285.1,
 285.2 & 285.3
 AS BUILT NOS.
 150-10

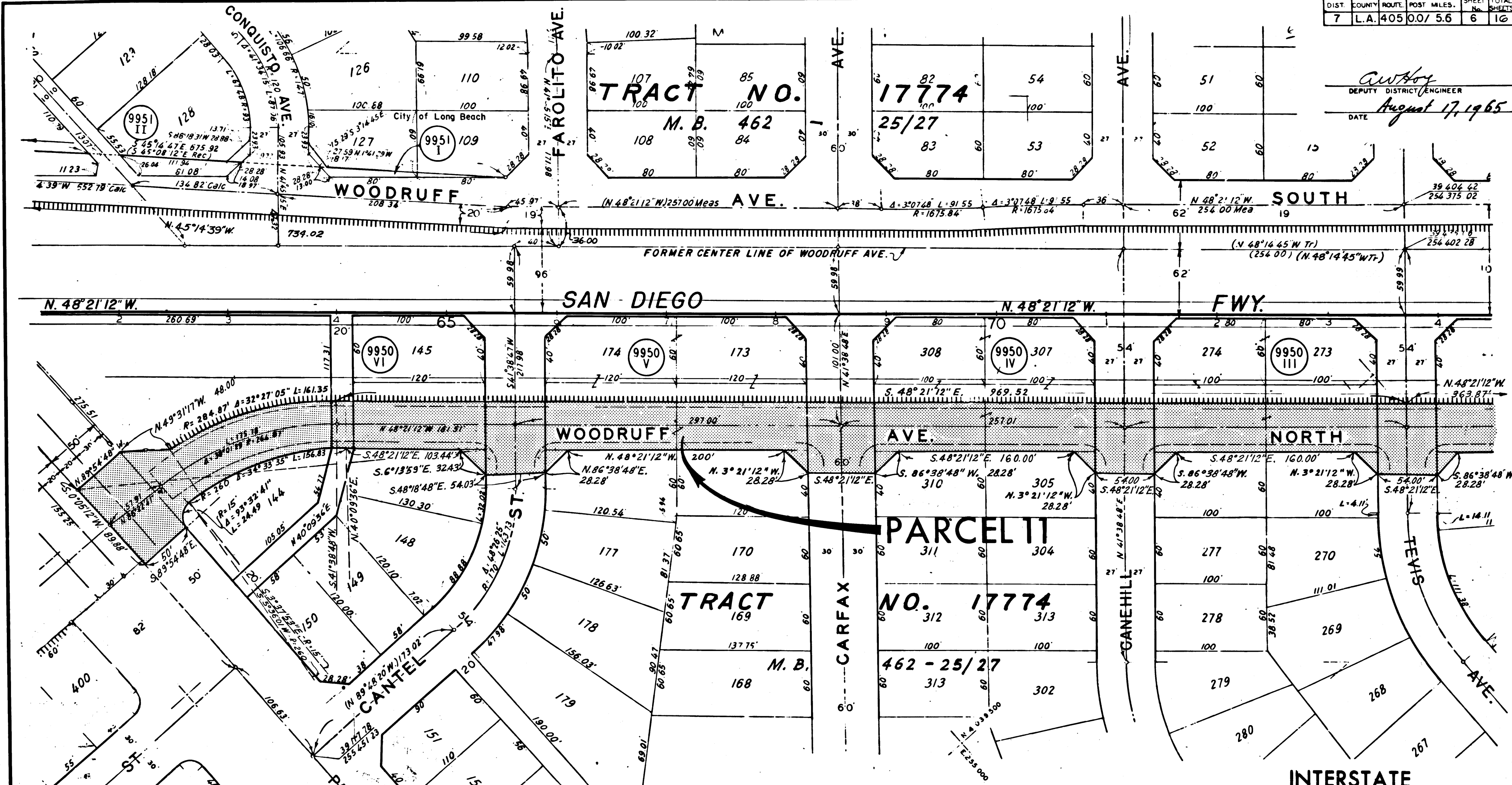
RECORDED
 AT REQUEST OF OWNER
 DEPT. OF PUBLIC WORKS
 AUG. 23, 1965
 4:23 PM 8 A.M.
 BY [Signature] Deputy

INTERSTATE
 STATE OF CALIFORNIA
 HIGHWAY TRANSPORTATION AGENCY
 DEPARTMENT OF PUBLIC WORKS
 DIVISION OF HIGHWAYS
**PROPOSED RELINQUISHMENT
 TO THE
 CITY OF LONG BEACH
 CITY OF SIGNAL HILL**



DIST.	COUNTY	ROUTE	POST MILES	SHEET NO.	TOTAL SHEETS
7	L.A.	405	0.07 5.6	6	16

C. W. Hoy
 DEPUTY DISTRICT ENGINEER
 DATE August 17, 1965



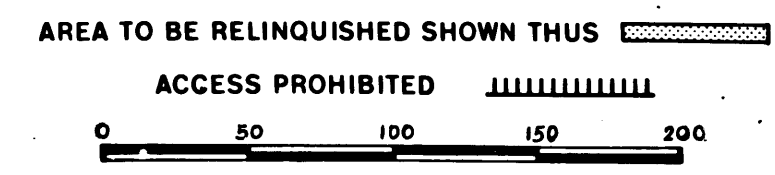
378
 REL-391
 DRN BY W. M.
 C.L.C. BY [Signature]
 CK'D BY [Signature]
 BASE MAP NOS.
 F-1899, 1900,
 1901, 1902, 1903
 B-1904
 REF. MAP NOS.
 C.C.M. 285.1,
 285.2 & 285.3
 AS BUILT NOS.
 150-10

TRACT NO. 17177
 M.B. 420-40/46

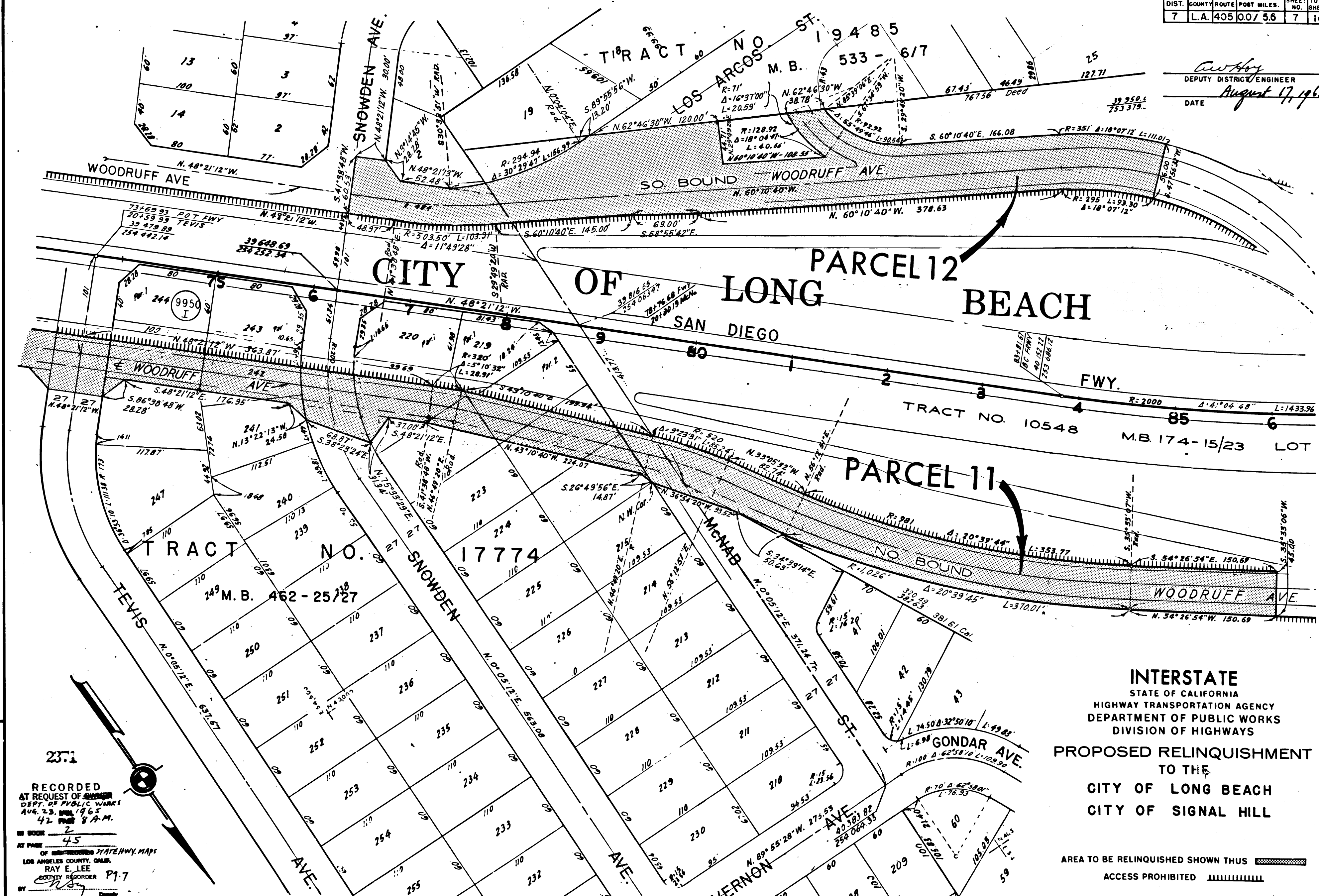
CITY OF LONG BEACH

RECORDED
 AT REQUEST OF ENGINEER
 DEPT. OF PUBLIC WORKS
 AUG. 23, 1965
 4:27 P.M.
 IN BOOK 2
 AT PAGE 44
 OF MAP RECORDED STATE HWY. MAPS
 LOS ANGELES COUNTY, CALIF.
 RAY E. LEE
 COUNTY RECORDER
 BY [Signature] Deputy

INTERSTATE
 STATE OF CALIFORNIA
 HIGHWAY TRANSPORTATION AGENCY
 DEPARTMENT OF PUBLIC WORKS
 DIVISION OF HIGHWAYS
 PROPOSED RELINQUISHMENT
 TO THE
 CITY OF LONG BEACH
 CITY OF SIGNAL HILL

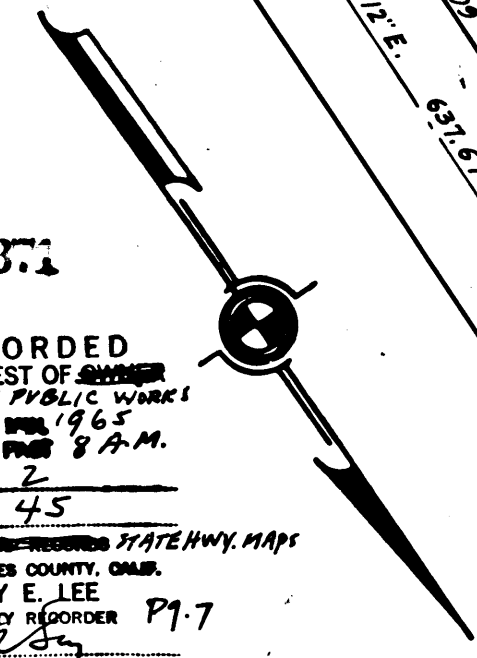


Deputy District Engineer
 August 17, 1965
 DATE

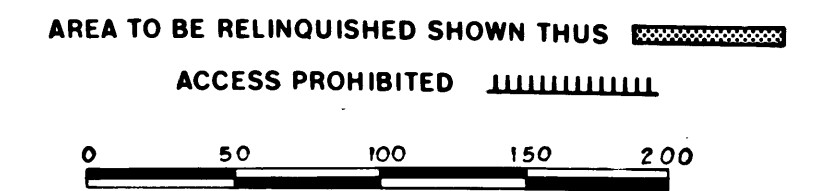


REL-378, 391
 DR'N BY R.C.
 C'LD BY M.D.
 BASE MAP NO'S
 F-1899, 1900
 1901, 1902, 1903
 B-1904
 REF. MAP NO'S
 C.C.M. 285.1
 285.2, & 285.3
 AS BUILT NO'S
 150-10

RECORDED
 AT REQUEST OF
 DEPT. OF PUBLIC WORKS
 AUG. 23, 1965
 42 PAGES 8 A.M.
 BOOK 2
 AT PAGE 45
 OF RECORDED STATE HWY. MAPS
 LOS ANGELES COUNTY, CALIF.
 RAY E. LEE
 COUNTY RECORDER P1.7
 Deputy



INTERSTATE
 STATE OF CALIFORNIA
 HIGHWAY TRANSPORTATION AGENCY
 DEPARTMENT OF PUBLIC WORKS
 DIVISION OF HIGHWAYS
 PROPOSED RELINQUISHMENT
 TO THE
 CITY OF LONG BEACH
 CITY OF SIGNAL HILL

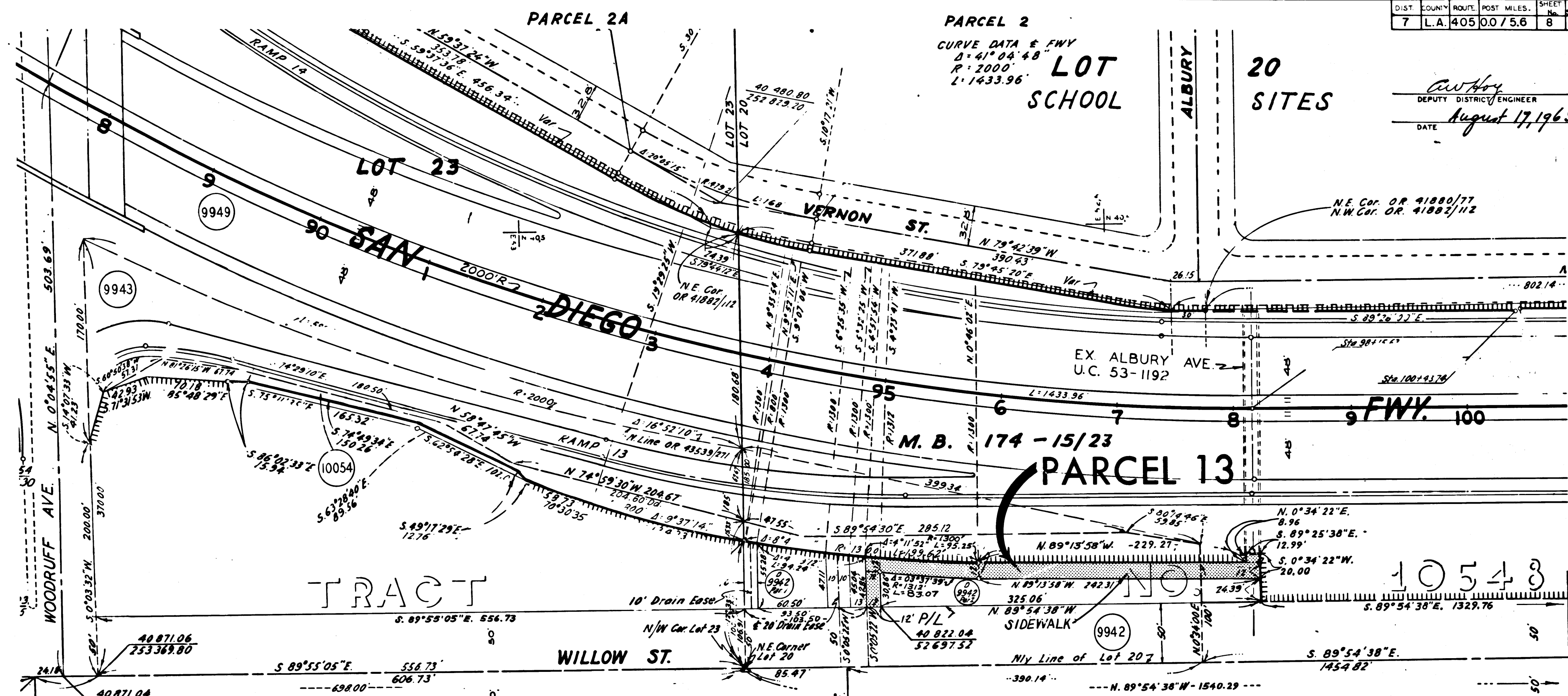


DIST.	COUNTY	ROUTE	POST MILES.	SHEET No.	TOTAL SHEETS
7	L.A.	405	0.0/5.6	8	16

PARCEL 2
 CURVE DATA & FWY
 Δ = 41° 04' 48"
 R = 2000'
 L = 1433.96'

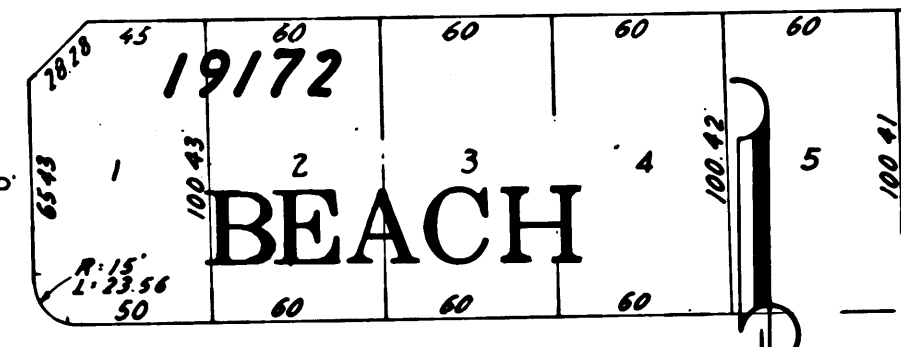
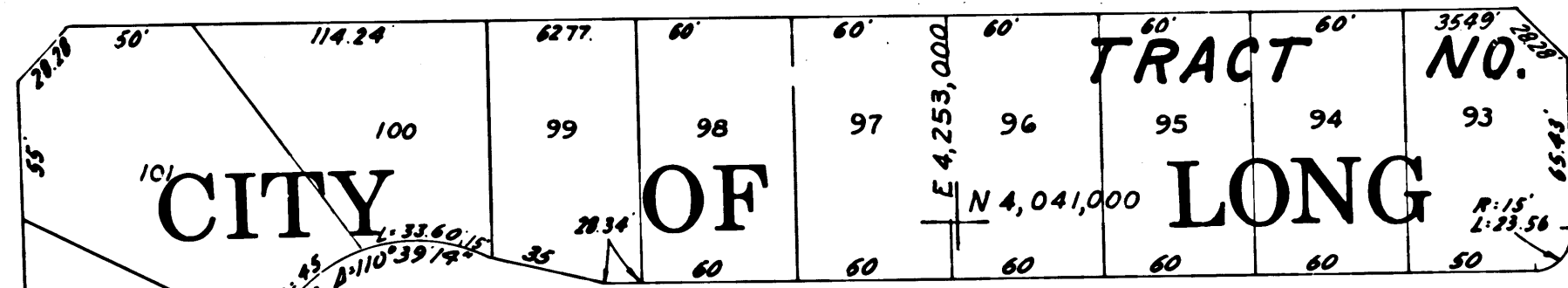
20 SITES

C.W. Hoy
 DEPUTY DISTRICT ENGINEER
 DATE August 17, 1965

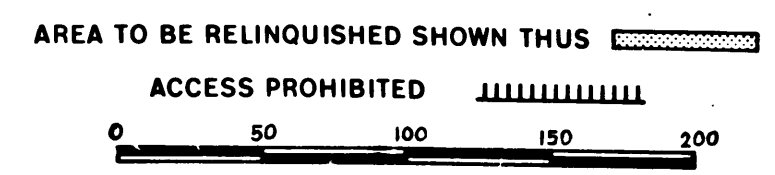


RECORDED
 AT REQUEST OF OWNER
 DEPT OF PUBLIC WORKS
 AUG. 23, 1965
 42 PAST 8 A.M.
 2371
 AT PAGE 46
 OF MAPS
 OF LOS ANGELES COUNTY, CALIF.
 RAY E. LEE
 COUNTY RECORDER

378
 REL-391
 C'D BY *W.M.*
 C'K'D BY *J.D.*
 BASE MAP NOS.
 F-1899, 1900,
 1901, 1902, 1903
 B-1904
 REF. MAP NOS.
 C.C.M. 285.1,
 285.2 & 285.3
 AS BUILT NOS.
 150-10



INTERSTATE
 STATE OF CALIFORNIA
 HIGHWAY TRANSPORTATION AGENCY
 DEPARTMENT OF PUBLIC WORKS
 DIVISION OF HIGHWAYS
 PROPOSED RELINQUISHMENT
 TO THE
 CITY OF LONG BEACH
 CITY OF SIGNAL HILL

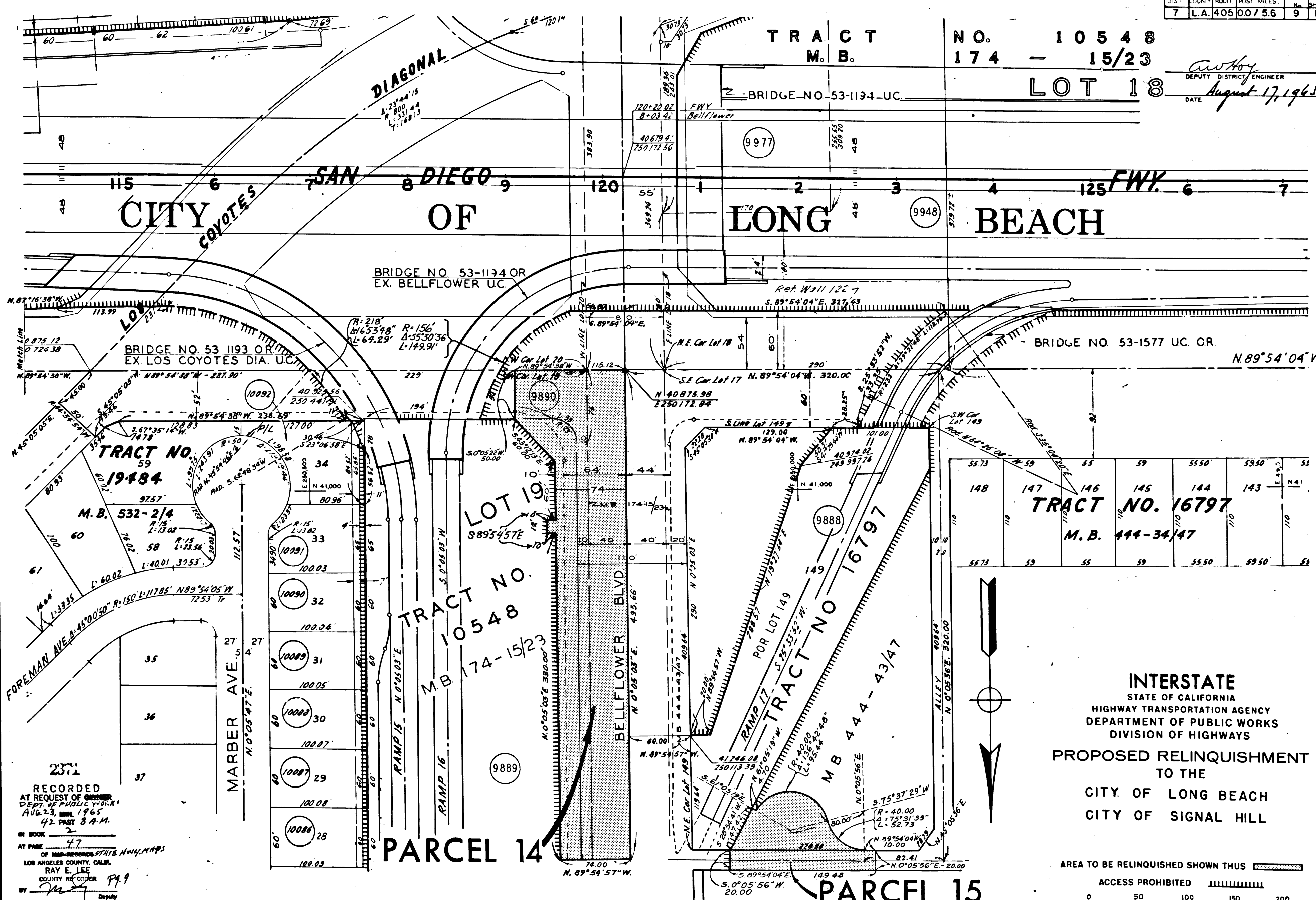


DIST	COUNTY	ROUTE	POST MILES	SHEET No.	TOTAL SHEETS
7	L.A.	405	0.0756	9	16

TRACT NO. 10548
M.B. 174 - 15/23
LOT 18

Anthony
DEPUTY DISTRICT ENGINEER
DATE August 17, 1965

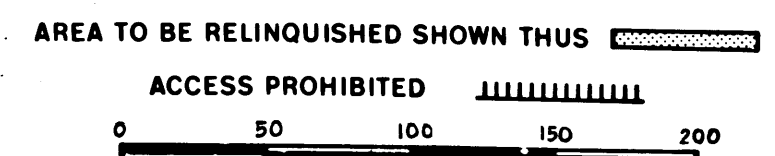
CITY OF LONG BEACH



378
REL-391
DRN BY W.M.
CLC BY W.M.
CND BY J.D.
BASE MAP NO'S
F-1899, 1900,
1901, 1902, 1903
& 1904
REF. MAP NO'S
C.C.M. 285.1,
215.2 & 285.3
AS BUILT NO'S
150-10

RECORDED
AT REQUEST OF OWNER
DEPT. OF PUBLIC WORKS
AUG. 23, 1965
4:22 P.M.
IN BOOK 2
AT PAGE 47
OF MAPS-RECORDS-STATE HIGHWAY MAPS
LOS ANGELES COUNTY, CALIF.
RAY E. LEE
COUNTY RECORDER
BY *[Signature]* Deputy

INTERSTATE
STATE OF CALIFORNIA
HIGHWAY TRANSPORTATION AGENCY
DEPARTMENT OF PUBLIC WORKS
DIVISION OF HIGHWAYS
PROPOSED RELINQUISHMENT
TO THE
CITY OF LONG BEACH
CITY OF SIGNAL HILL



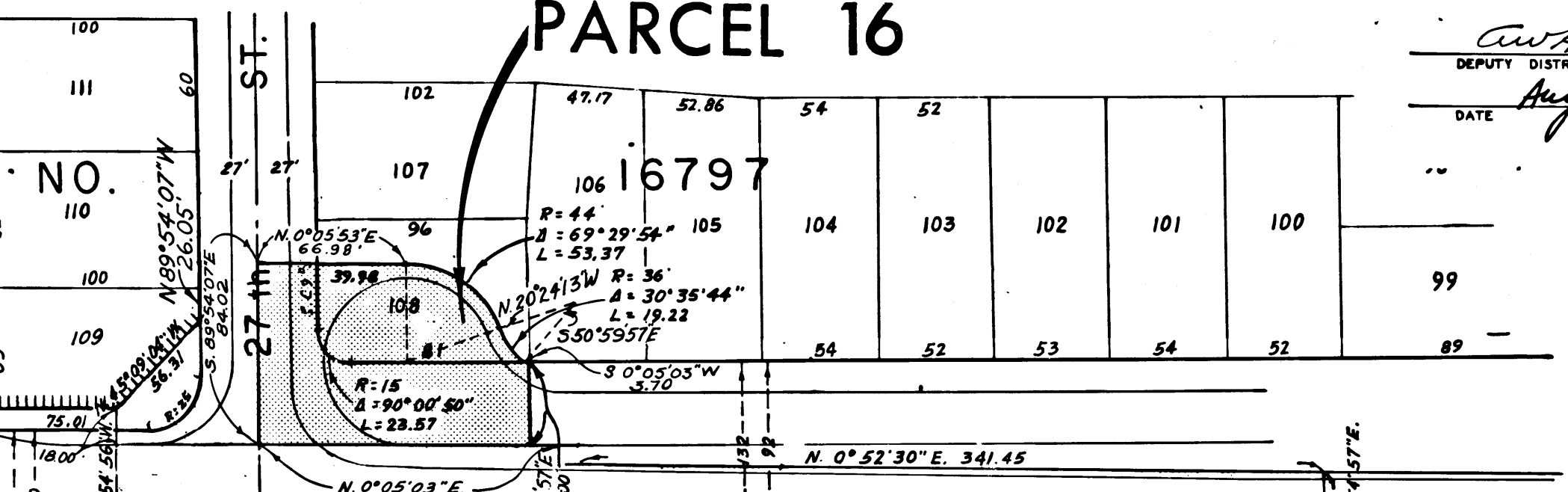
DIST.	COUNTY	ROUTE	POST MILES	SHEET NO.	TOTAL SHEETS
07	L.A.	405	0.0 / 5.6	10	16

C. W. Hoy
 DEPUTY DISTRICT ENGINEER
 DATE August 17, 1965

PARCEL 16

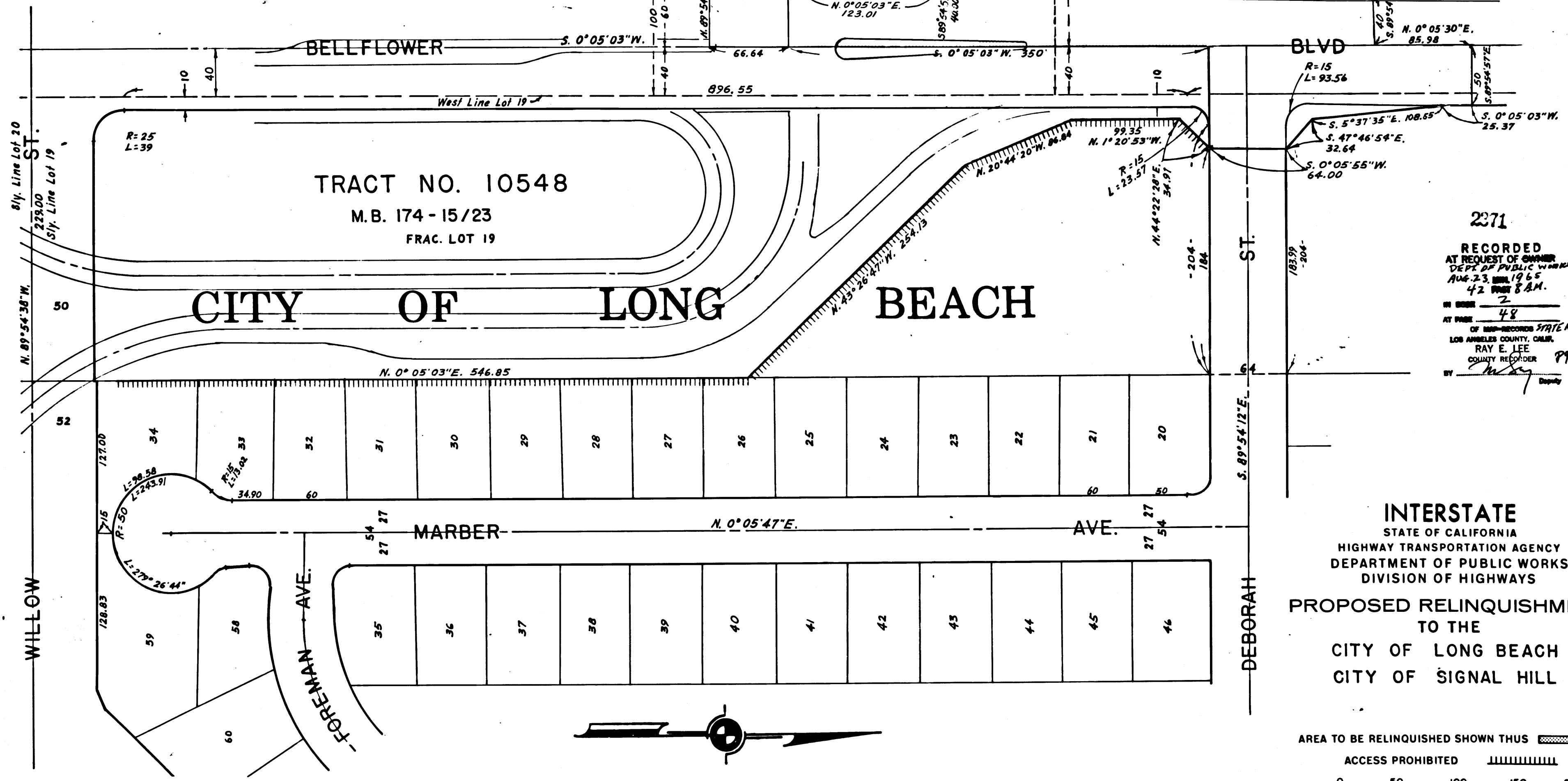
TRACT

LOT 149
 M.B. 444-43/47



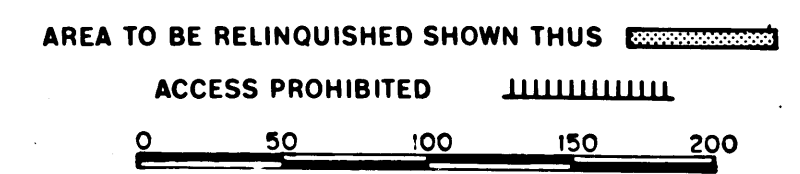
TRACT NO. 10548
 M.B. 174 - 15/23
 FRAC. LOT 19

CITY OF LONG BEACH




2371
 RECORDED
 AT REQUEST OF OWNER
 DEPT. OF PUBLIC WORKS
 AUG. 23, 1965
 4:21 PM 8 AM.
 BY *W. J. Lee* Deputy

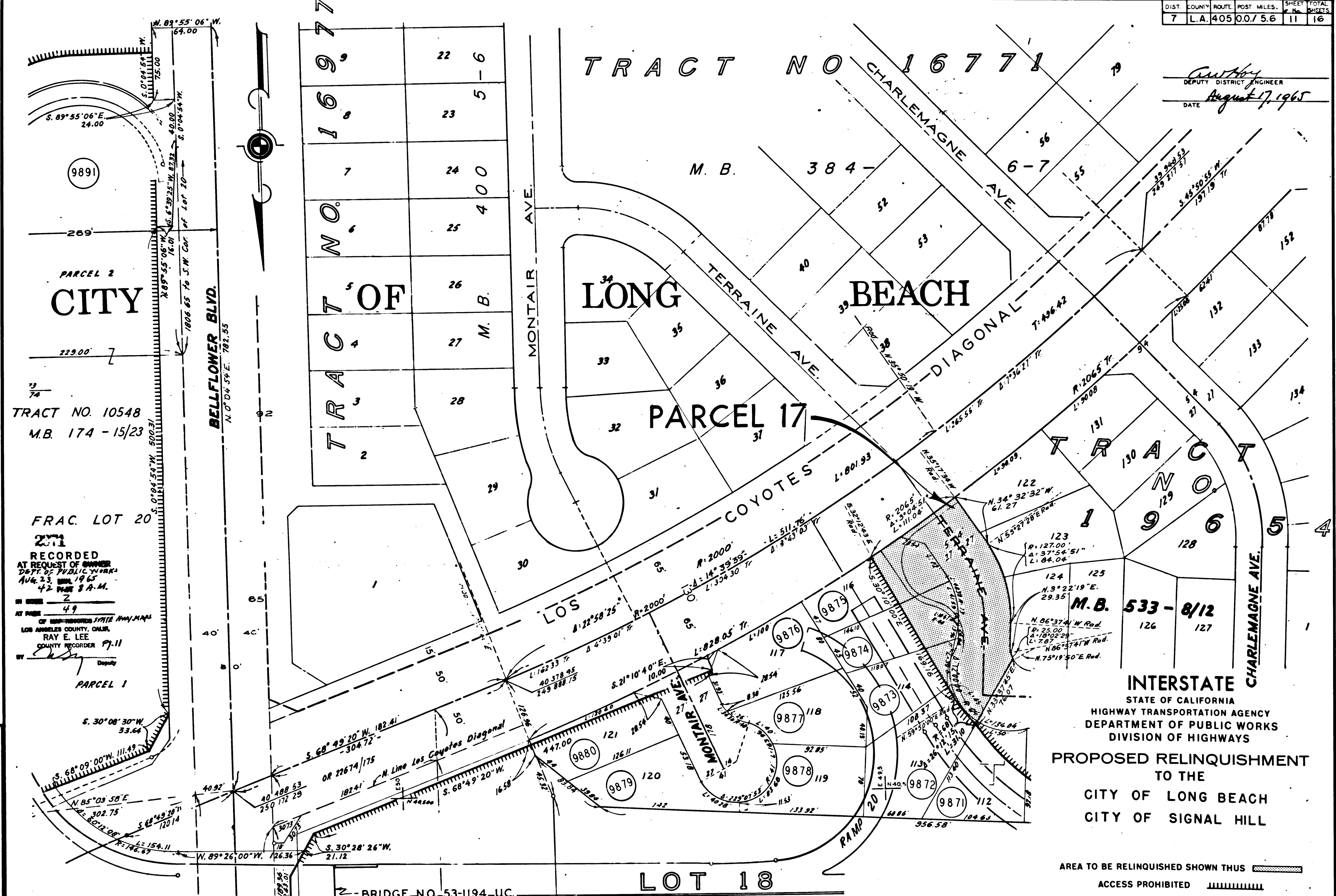
INTERSTATE
 STATE OF CALIFORNIA
 HIGHWAY TRANSPORTATION AGENCY
 DEPARTMENT OF PUBLIC WORKS
 DIVISION OF HIGHWAYS
 PROPOSED RELINQUISHMENT
 TO THE
 CITY OF LONG BEACH
 CITY OF SIGNAL HILL

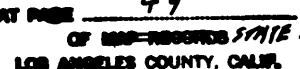


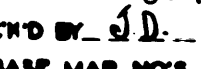
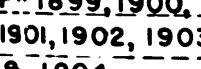
REL-378
 391
 DFN BY W.M.
 C.L.C. BY [Signature]
 CRD BY [Signature]
 BASE MAP NOS.
 F-1899, 1900,
 1901, 1902, 1903
 B-1904
 R.F. MAP NOS.
 C.C.M. 285.1,
 285.2 & 285.3
 AS-BUILT NOS.
 130-10

DIST.	COUNTY	ROUTE	POST MILES	SHEET No.	TOTAL SHEETS
7	L.A.	405	0.0/5.6	11	16

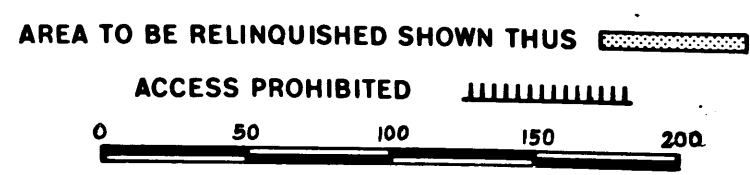

 DEPUTY DISTRICT ENGINEER
 DATE August 17, 1965



9891
 269
 PARCEL 2
CITY
 229.00
 TRACT NO. 10548
 M.B. 174 - 15/23
 7/74
 FRAC. LOT 20
2011
 RECORDED
 AT REQUEST OF OWNER
 DEPT. OF PUBLIC WORKS
 AUG. 23, 1965
 42 PAGES 8 A.M.
 BY  Deputy
 COUNTY RECORDER Pp. 11
 PARCEL 1
 S. 30° 08' 30" W. 33.64
 S. 60° 09' 00" W. 111.49
 N. 85° 03' 58" E. 302.75
 S. 68° 49' 20" W. 182.41
 OR 226.74/175
 182.41
 N. Line Los Coyotes Diagonal
 S. 68° 49' 20" W.
 W. 89° 26' 00" W. 126.36
 S. 30° 28' 26" W. 21.12
 40.92
 40.88 53
 259.132 29
 447.00
 40.378 95
 243.888 75
 176.20
 10.00
 125.56
 8.36
 125.56
 9879 120
 9880 121 2854
 126.11
 9879 120
 9877 118
 9878 119
 113.36
 108.37
 113.36
 9872
 9871 112
 556.58
 104.63
 123
 R. 127.00
 A. 37° 54' 51"
 L. 84.04
 124
 N. 3° 22' 19" E.
 29.35
 M.B. 533 - 8/12
 126 127
 N. 86° 37' 41" W. Rad.
 R. 25.00
 A. 1° 02' 28"
 L. 2.82
 N. 86° 37' 41" W. Rad.
 N. 75° 19' 50" E. Rad.

378
REL-391
 DRN BY R.C.
 C.I.C. BY 
 CHD BY 
 BASE MAP NO'S
 F. 1899, 1900,
 1901, 1902, 1903
 B. 1904
 REF. MAP NO'S
 C.C.M. 285.1,
 285.2 & 285.3
 AS BUILT NO'S
 150-10

INTERSTATE
 STATE OF CALIFORNIA
 HIGHWAY TRANSPORTATION AGENCY
 DEPARTMENT OF PUBLIC WORKS
 DIVISION OF HIGHWAYS
PROPOSED RELINQUISHMENT
TO THE
CITY OF LONG BEACH
CITY OF SIGNAL HILL



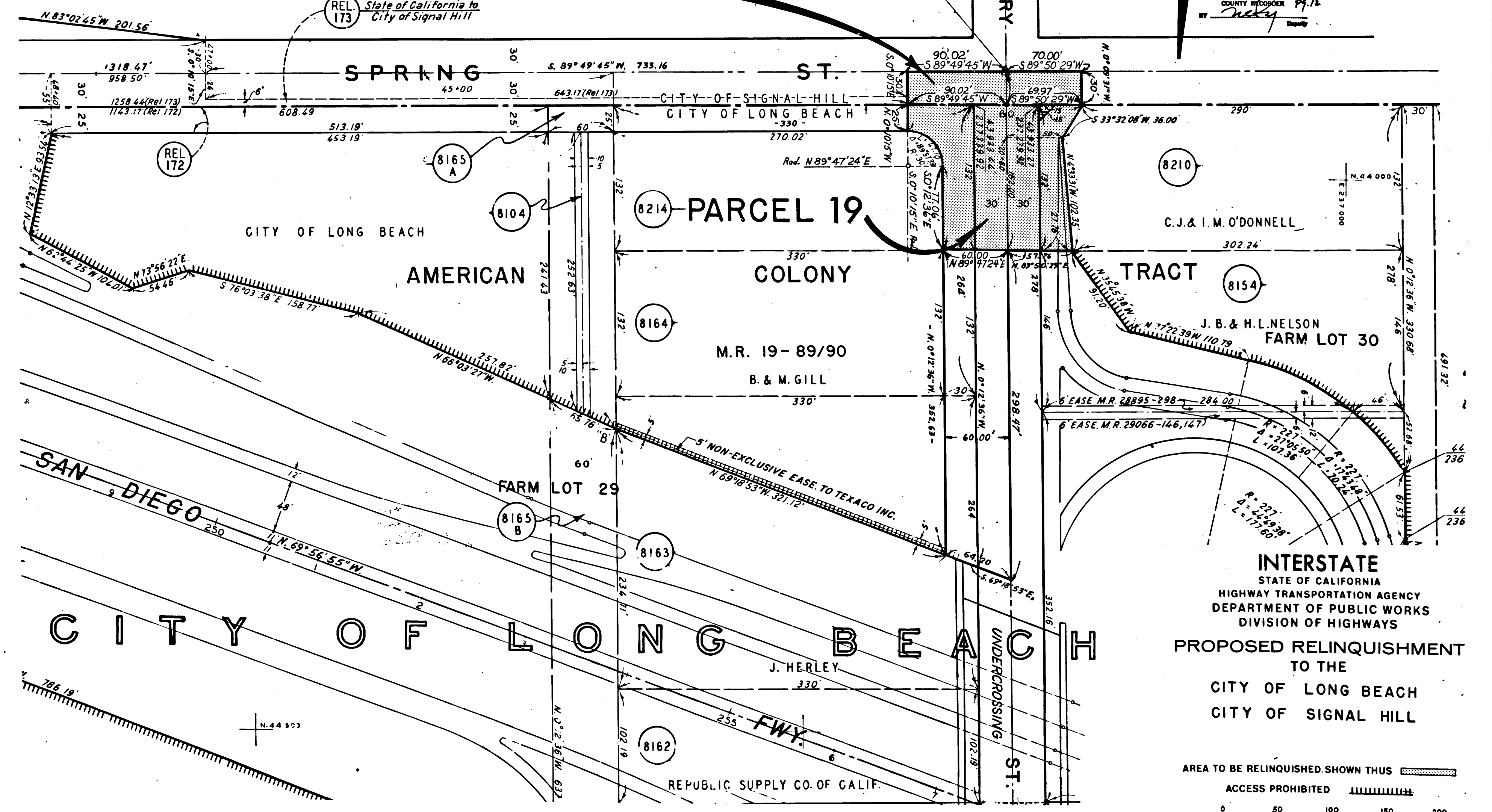
DIST.	COUNTY	ROUTE	POST MILES	SHEET No.	TOTAL SHEETS
7	L.A.	405	0.0 / 5.6	12	16

CITY OF SIGNAL HILL

2371
 RECORDED
 AT REQUEST OF
 DEPT. OF PUBLIC WORKS
 AUG 23 1965
 4:23 PM 8 A.M.
 OF THE RECORDED STATE HIGHWAY MAPS
 LOS ANGELES COUNTY, CALIF.
 RAY E. LEE
 COUNTY RECORDER Pg. 12
 BY *[Signature]* Deputy

DEPUTY DISTRICT ENGINEER
 DATE August 17, 1965

PARCEL 18
 39+66.84 E SPRING ST
 20+00.00 E CHERRY AVE



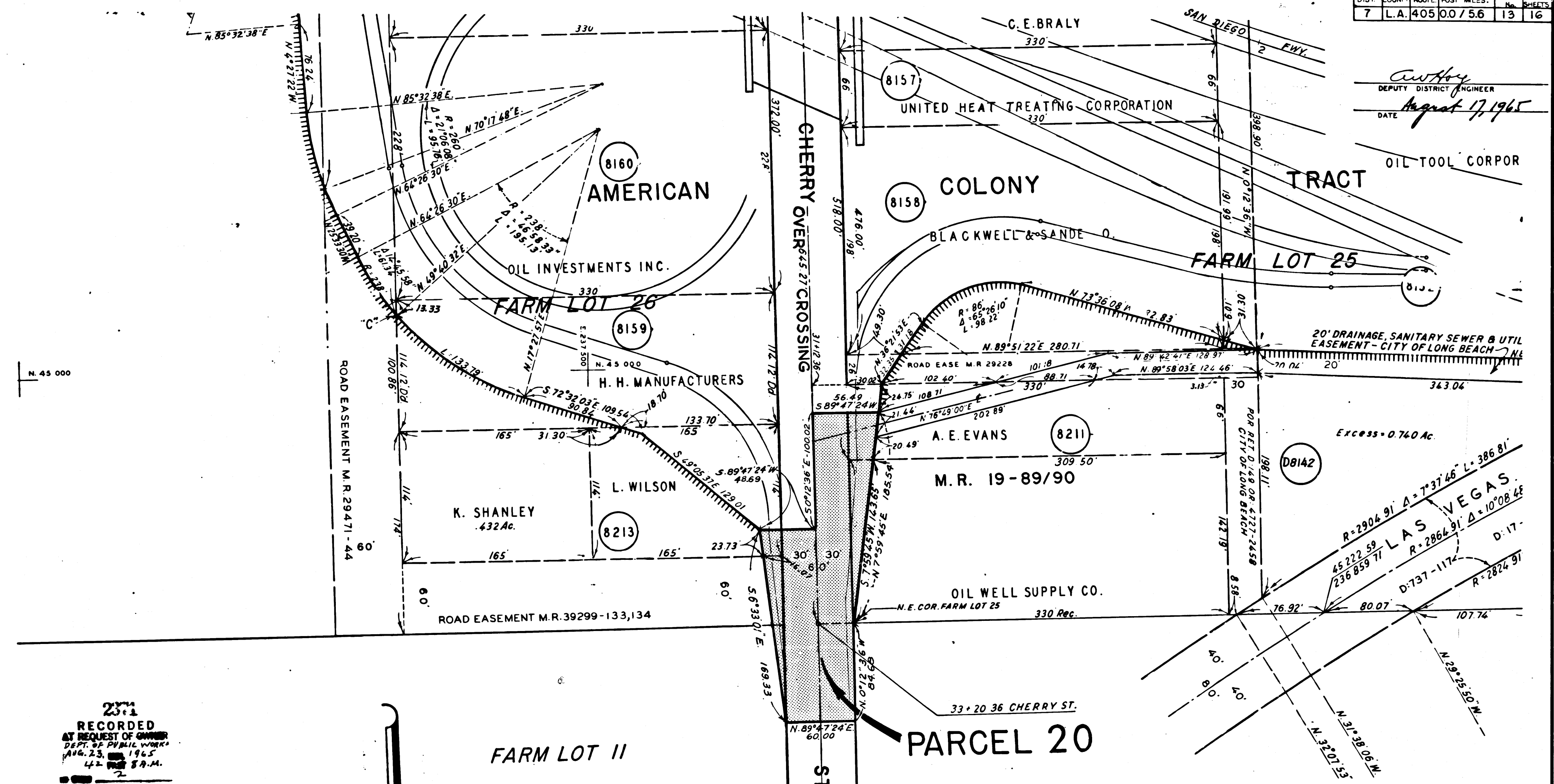
INTERSTATE
 STATE OF CALIFORNIA
 HIGHWAY TRANSPORTATION AGENCY
 DEPARTMENT OF PUBLIC WORKS
 DIVISION OF HIGHWAYS
 PROPOSED RELINQUISHMENT
 TO THE
 CITY OF LONG BEACH
 CITY OF SIGNAL HILL

AREA TO BE RELINQUISHED SHOWN THUS
 ACCESS PROHIBITED
 0 50 100 150 200

378
 REL-391
 DTM BY W.M.
 C.L.C. BY *[Signature]*
 C.T.D. BY *[Signature]*
 BASE MAP NOS.
 F-1899; 1900,
 1901, 1902, 1903
 & 1904
 RE.P. MAP NOS.
 C.C.M. 285.1,
 285.2 & 285.3
 AS BUILT NOS.
 50-10

DIST.	COUNTY	ROUTE	POST MILES	SHEET No.	TOTAL SHEETS
7	L.A.	405	0.0/5.6	13	16

C. W. Hoy
 DEPUTY DISTRICT ENGINEER
 DATE August 17, 1965



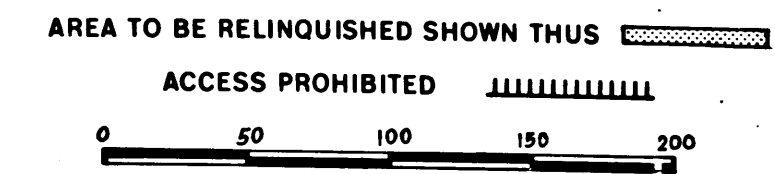
N. 45 000

RECORDED
 AT REQUEST OF OWNER
 DEPT. OF PUBLIC WORKS
 AUG. 23, 1965
 4:22 P.M.
 51
 OF CALIFORNIA STATE HWY. MAP
 LOS ANGELES COUNTY, CALIF.
 RAY E. LEE
 COUNTY RECORDER P. 13

378
 REL-391
 D.M. BY R.C.
 C.L.C. BY J.D.
 C.T.D. BY J.D.
 B.A. MAP NOS.
 F-1899, 1900,
 1901, 1902, 1903
 E-1904
 REF. MAP NOS.
 C.C.M. 285.1,
 285.2 & 285.3
 AS BUILT NOS.
 150-10

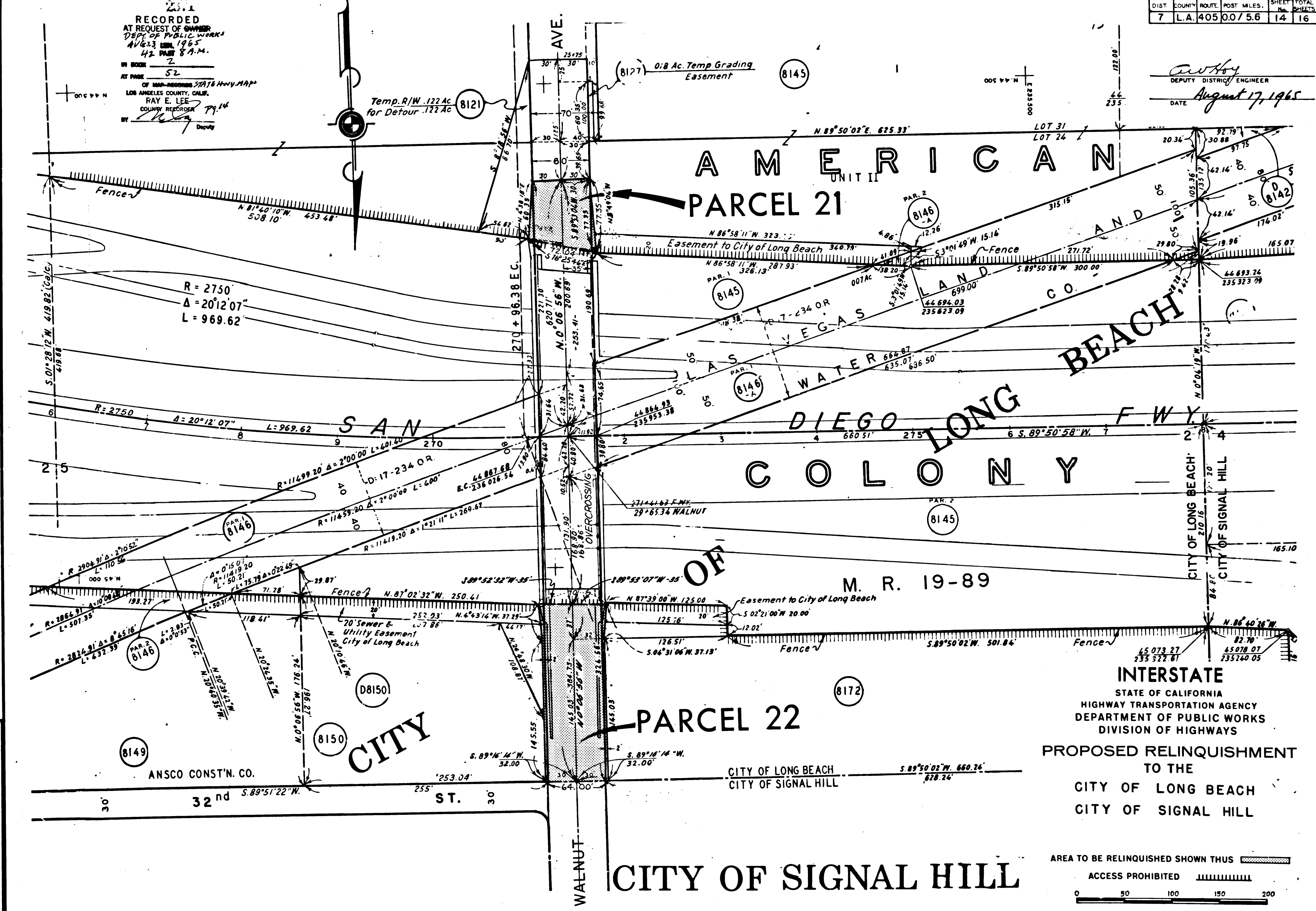
CITY OF LONG BEACH

INTERSTATE
 STATE OF CALIFORNIA
 HIGHWAY TRANSPORTATION AGENCY
 DEPARTMENT OF PUBLIC WORKS
 DIVISION OF HIGHWAYS
 PROPOSED RELINQUISHMENT
 TO THE
 CITY OF LONG BEACH
 CITY OF SIGNAL HILL



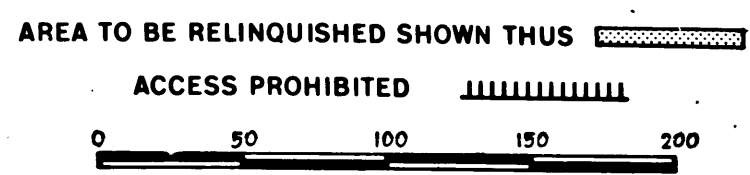
RECORDED
 AT REQUEST OF OWNER
 DEPT. OF PUBLIC WORKS
 AUG 23 1965
 42 PAGE 8 A.M.
 IN BOOK 2
 AT PAGE 52
 OF MAP-RECORDING STATE HWY. MAP
 LOS ANGELES COUNTY, CALIF.
 RAY E. LEE
 COUNTY RECORDER
 BY [Signature] Deputy

[Signature]
 DEPUTY DISTRICT ENGINEER
 DATE August 17, 1965



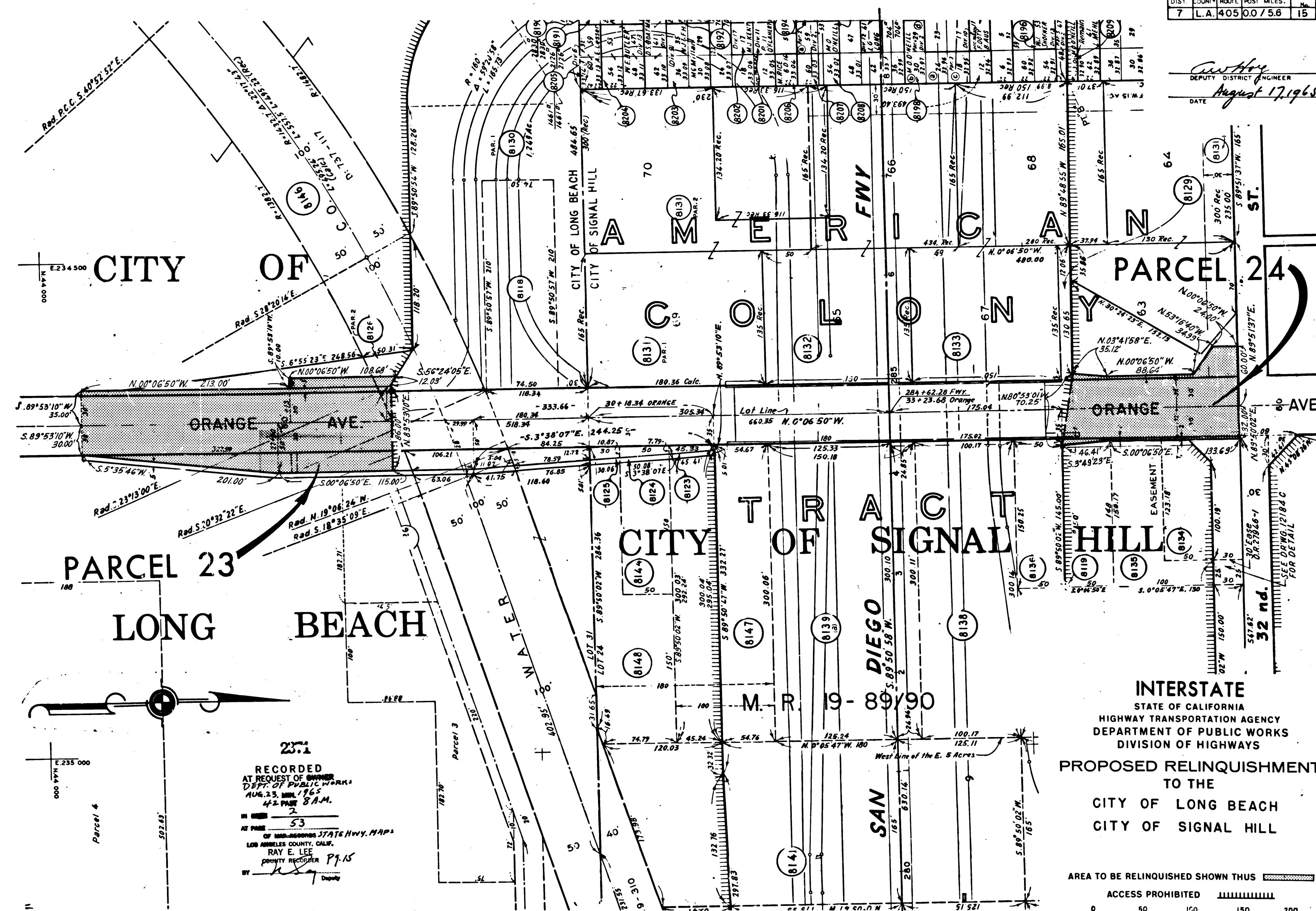
378
 REL-391
 DRN BY [Signature]
 C.L.C. BY [Signature]
 CKD BY [Signature]
 BASE MAP NO'S
 F-1899, 1900,
 1901, 1902, 1903
 & 1904
 REF. MAP NO'S
 C.C.M. 285.1,
 285.2 & 285.3
 AS BUILT NO'S
 150-10

INTERSTATE
 STATE OF CALIFORNIA
 HIGHWAY TRANSPORTATION AGENCY
 DEPARTMENT OF PUBLIC WORKS
 DIVISION OF HIGHWAYS
 PROPOSED RELINQUISHMENT
 TO THE
 CITY OF LONG BEACH
 CITY OF SIGNAL HILL



CITY OF SIGNAL HILL

Deputy District Engineer
 August 17, 1965
 DATE



378
 REL-391
 DWN BY R.C.
 C.L.C. BY J.D.
 C.P.D. BY J.D.
 BASE MAP NO'S
 F-1899, 1900,
 1901, 1902, 1903
 & 1904
 I.F. MAP NO'S
 C.C.M. 285.1,
 285.2 & 285.3
 AS B'LT NO'S
 15C-10

RECORDED
 AT REQUEST OF OWNER
 DEPT. OF PUBLIC WORKS
 AUG. 23, 1965
 4:22 P.M.
 2
 53
 OF HIGHWAYS STATE HWY. MAPS
 LOS ANGELES COUNTY, CALIF.
 RAY E. LEE
 COUNTY RECORDER P.F. 15

INTERSTATE
 STATE OF CALIFORNIA
 HIGHWAY TRANSPORTATION AGENCY
 DEPARTMENT OF PUBLIC WORKS
 DIVISION OF HIGHWAYS
PROPOSED RELINQUISHMENT
 TO THE
 CITY OF LONG BEACH
 CITY OF SIGNAL HILL

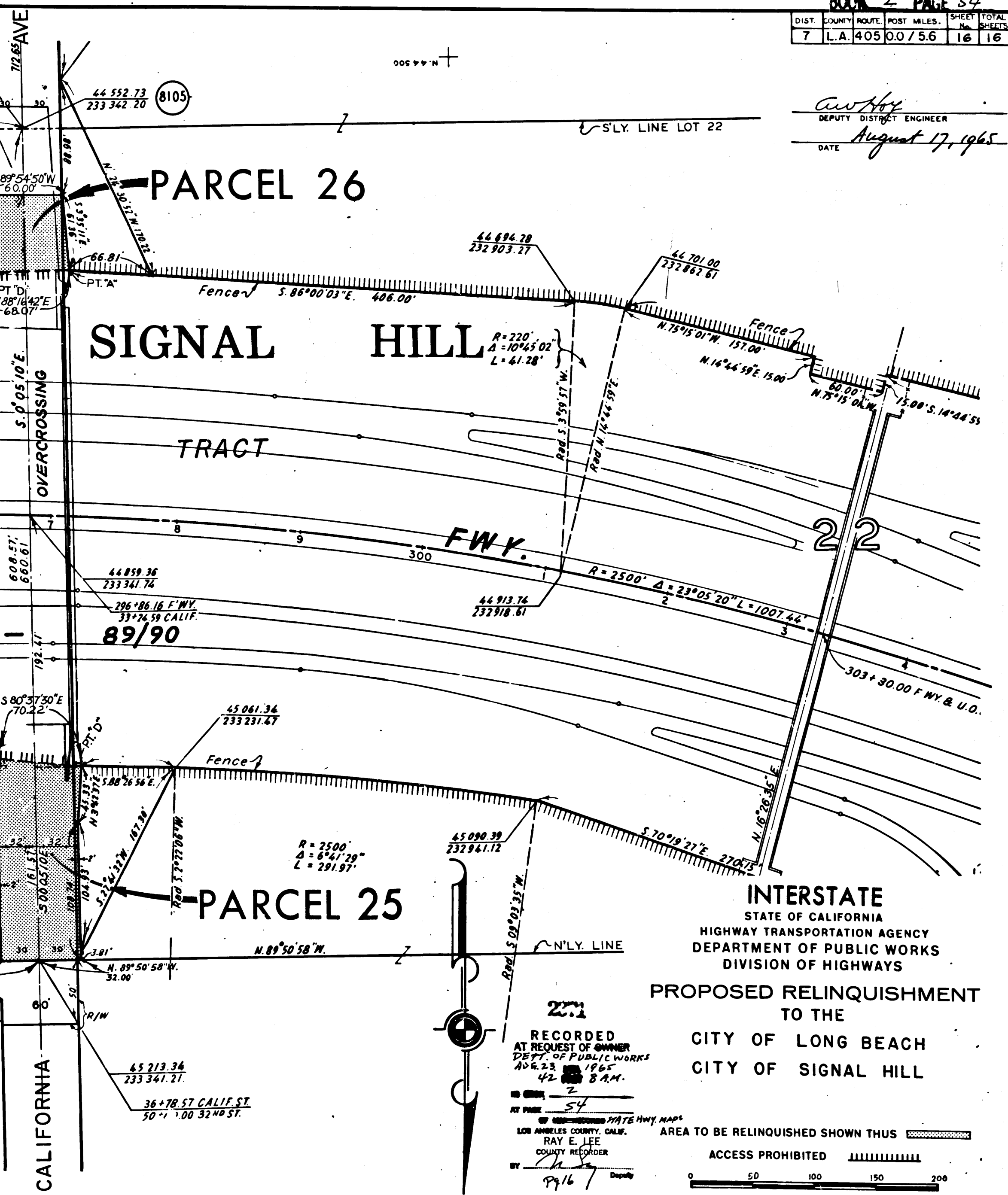
AREA TO BE RELINQUISHED SHOWN THUS [Hatched Pattern]
 ACCESS PROHIBITED [Dashed Line]
 0 50 100 150 200

DETAIL OF THIS SUBDIVISION - SEE MAP, FILE NO. F-1905

1321.14 Calc.
1320 Rec.
REMAINDER = 1.596 AC.

630.58 Calc.
630.58 Rec.
REMAINDER = 2.761 AC.

58	57	56	55	54	53	52	51	50	49	48	47	46	45	44	43	42	41	40	39	38	37	36	35	34	33	32	31	30	29	28	27	26	25	24	23	22	21	20	19	18	17	16	15	14	13	12	11	10	9	8	7	6	5	4	3	2	1
52	51	50	49	48	47	46	45	44	43	42	41	40	39	38	37	36	35	34	33	32	31	30	29	28	27	26	25	24	23	22	21	20	19	18	17	16	15	14	13	12	11	10	9	8	7	6	5	4	3	2	1						
46	45	44	43	42	41	40	39	38	37	36	35	34	33	32	31	30	29	28	27	26	25	24	23	22	21	20	19	18	17	16	15	14	13	12	11	10	9	8	7	6	5	4	3	2	1												
40	39	38	37	36	35	34	33	32	31	30	29	28	27	26	25	24	23	22	21	20	19	18	17	16	15	14	13	12	11	10	9	8	7	6	5	4	3	2	1																		
34	33	32	31	30	29	28	27	26	25	24	23	22	21	20	19	18	17	16	15	14	13	12	11	10	9	8	7	6	5	4	3	2	1																								
28	27	26	25	24	23	22	21	20	19	18	17	16	15	14	13	12	11	10	9	8	7	6	5	4	3	2	1																														
22	21	20	19	18	17	16	15	14	13	12	11	10	9	8	7	6	5	4	3	2	1																																				
16	15	14	13	12	11	10	9	8	7	6	5	4	3	2	1																																										
10	9	8	7	6	5	4	3	2	1																																																
4	3	2	1																																																						



awh
 DEPUTY DISTRICT ENGINEER
 DATE August 17, 1965

378
 REL-391
 DRN BY M.M.
 C/LC BY J.D.
 CK'D BY J.D.
 BASE MAP NO'S
 F-1899; 1900,
 1901, 1902, 1903
 & 1904
 REF. MAP NO'S
 C.C.M. 285.1,
 285.2 & 285.3
 AS BUILT NO'S
 150-10

INTERSTATE
 STATE OF CALIFORNIA
 HIGHWAY TRANSPORTATION AGENCY
 DEPARTMENT OF PUBLIC WORKS
 DIVISION OF HIGHWAYS
 PROPOSED RELINQUISHMENT
 TO THE
 CITY OF LONG BEACH
 CITY OF SIGNAL HILL

RECORDED
 AT REQUEST OF OWNER
 DEPT. OF PUBLIC WORKS
 APR. 23 1965
 42 8 A.M.
 BY RAY E. LEE
 COUNTY RECORDER

AREA TO BE RELINQUISHED SHOWN THUS [Hatched Box]
 ACCESS PROHIBITED [Symbol]
 0 50 100 150 200