

BOOK 2 PAGE 55				
DIST	COUNTY	ROUTE	POST MILES	SECTION
7	LA	605	11.4/13.6	1 9

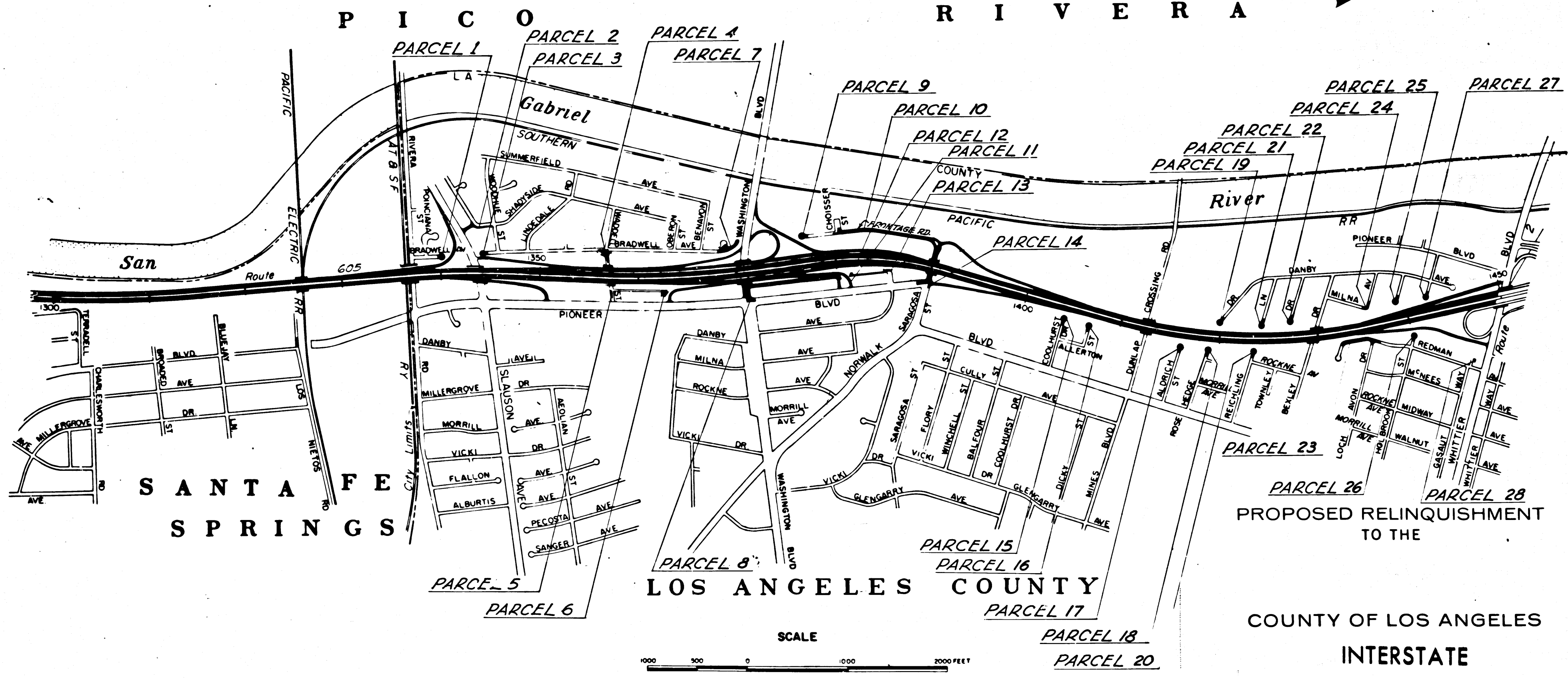
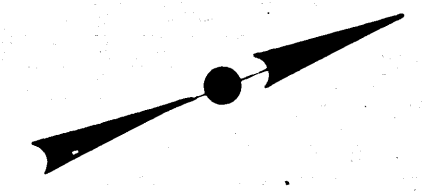
STATE OF CALIFORNIA
HIGHWAY TRANSPORTATION AGENCY
DEPARTMENT OF PUBLIC WORKS
DIVISION OF HIGHWAYS

Anthony
DEPUTY DISTRICT ENGINEER
August 30, 1965

RIGHT OF WAY MAPS OF
STATE HIGHWAY

In Los Angeles County between Rivera Road and Whittier Boulevard

2205
RECORDED
AT REQUEST OF ENGINEER
DEPT. OF PUBLIC WORKS
SEPT. 7, 1965
38 247 3 A.M.
BY RAY E. LEE
COUNTY RECORDER
FREE
Deputy



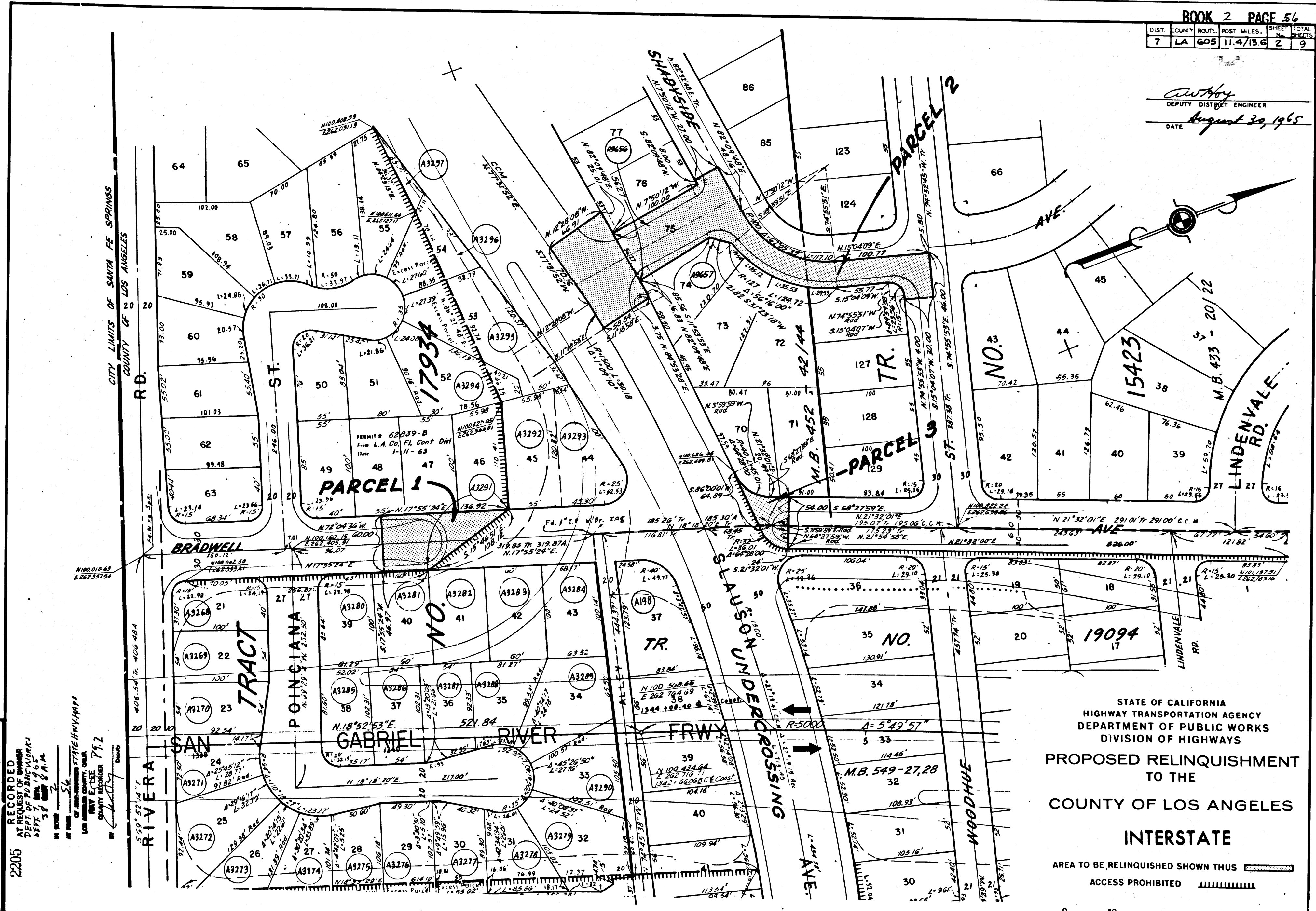
REL-409
DRN BY R.S.D.
C'LC BY J.M.
CK'D BY J.D.
BASE MAP NO'S
F-1963, F-1964
REF. MAP NO'S
AS BUILT NO'S
156-16



PROPOSED RELINQUISHMENT
TO THE
COUNTY OF LOS ANGELES
INTERSTATE

DIST.	COUNTY	ROUTE	POST MILES.	SHEET TOTAL
7	LA	605	11.4/13.6	2 9

Authey
 DEPUTY DISTRICT ENGINEER
 DATE August 29, 1965

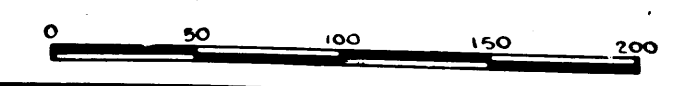


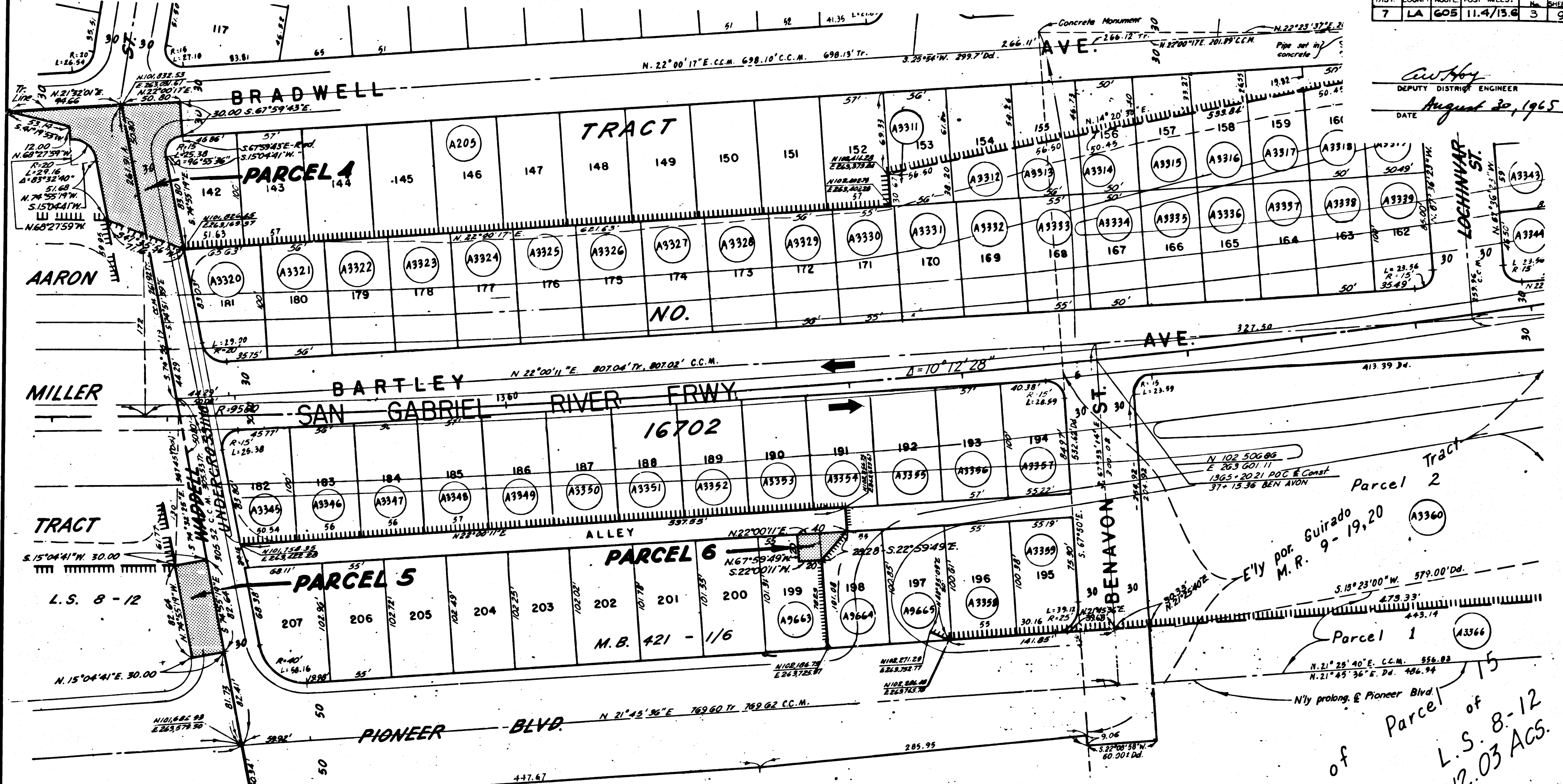
REL-409
 DRN BY RSD
 C/LC BY L.N.
 CKD BY J.D.
 BASE MAP NO'S
 E-1963, F-1964
 REF. MAP NOS.
 AS BUILT NO'S
 156-16

RECORDED
 AT REQUEST OF ENGINEER
 DEPT. OF PUBLIC WORKS
 SEPT. 7 1965 8 A.M.
 BY *[Signature]*
 COUNTY RECORDER

STATE OF CALIFORNIA
 HIGHWAY TRANSPORTATION AGENCY
 DEPARTMENT OF PUBLIC WORKS
 DIVISION OF HIGHWAYS
 PROPOSED RELINQUISHMENT
 TO THE
 COUNTY OF LOS ANGELES
 INTERSTATE

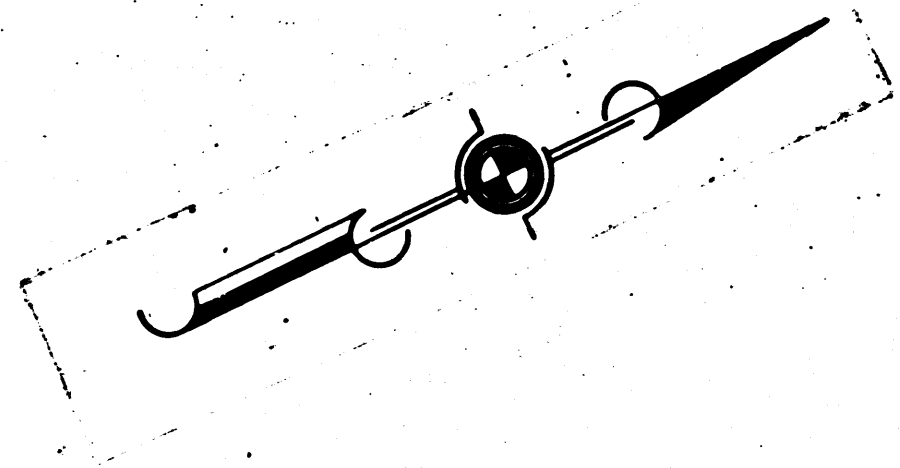
AREA TO BE RELINQUISHED SHOWN THUS 
 ACCESS PROHIBITED 





C. W. Hoy
 DEPUTY DISTRICT ENGINEER
 DATE August 30, 1965

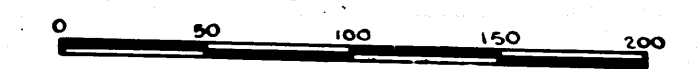
REL-409
 DWN BY R.S.D.
 C/LC BY J.N.
 CKD BY J.D.
 BASE MAP NO'S
 F-1963, F-1964
 REF. MAP NO'S
 AS BUILT NO'S
 156-16



2205
 RECORDED
 AT REQUEST OF OWNER
 DEPT. OF PUBLIC WORKS
 SEPT 7, 1965
 8:38 A.M.
 BY *[Signature]*
 COUNTY RECORDER P. 9.3
 Deputy

STATE OF CALIFORNIA
 HIGHWAY TRANSPORTATION AGENCY
 DEPARTMENT OF PUBLIC WORKS
 DIVISION OF HIGHWAYS
 PROPOSED RELINQUISHMENT
 TO THE
 COUNTY OF LOS ANGELES
 INTERSTATE

AREA TO BE RELINQUISHED SHOWN THUS ACCESS PROHIBITED

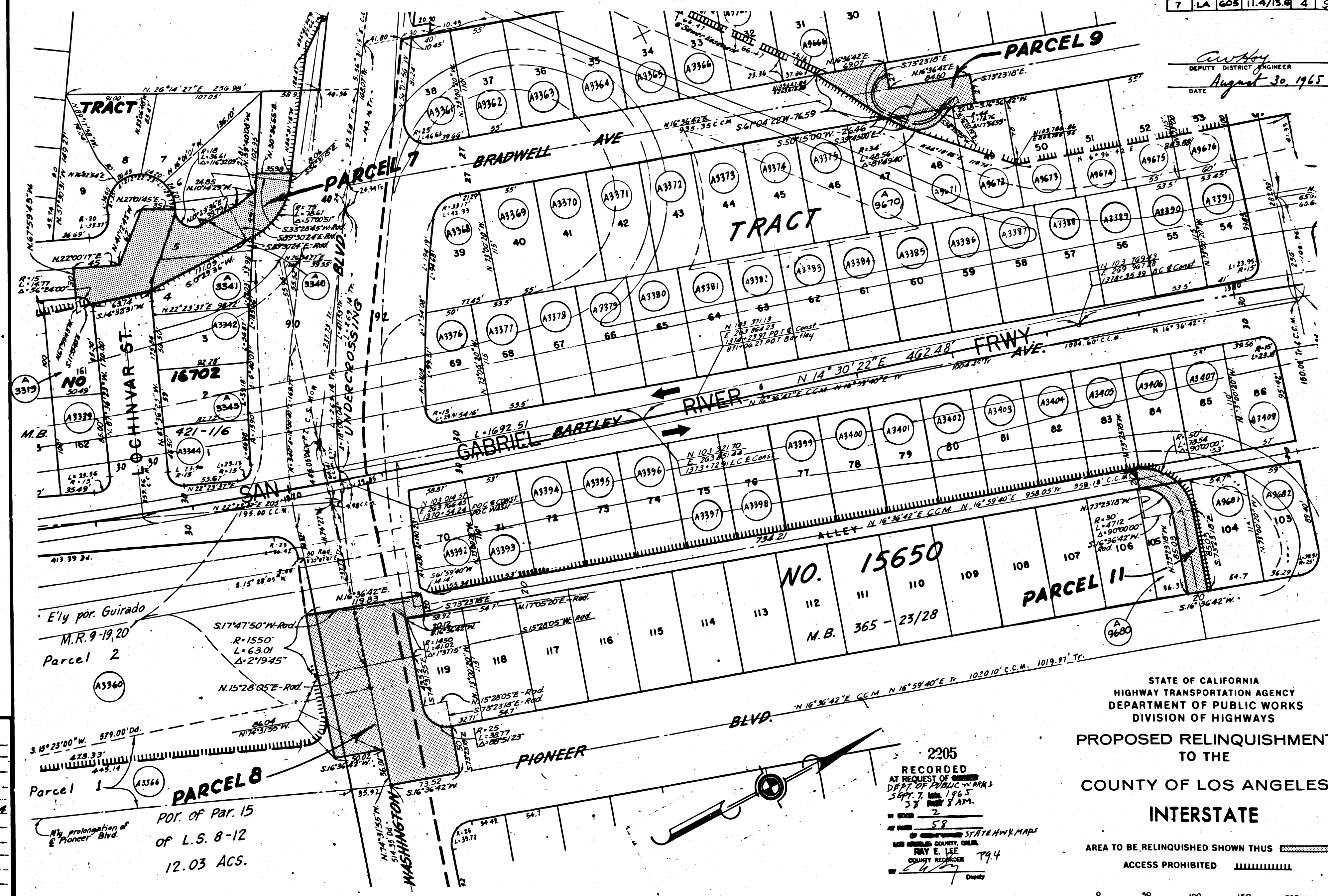


por. of Parcel of L.S. 8-12 of 12.03 ACS.

Parcel 1
 Parcel 2
 Parcel 3
 Parcel 4
 Parcel 5
 Parcel 6

DIST.	COUNTY	ROUTE	POST MILES.	SHEET NO.	TOTAL SHEETS
7	LA	605	11.4/13.6	4	9

Curtis
 DEPUTY DISTRICT ENGINEER
 DATE August 30, 1965



REL-409
 DRN BY RSD
 CLC BY L.N.
 CTD BY J.D.
 BASE MAP NOS.
 E-1863, F-1864
 REF. MAP NOS.
 AS BUILT NOS.
 156-16

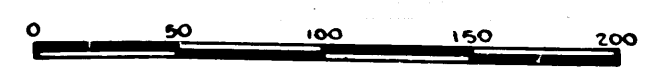
Ely por. Guirado
 M.R. 9-19,20
 Parcel 2
 A3360

Parcel 1
 POR. of Par. 15
 of L.S. 8-12
 12.03 ACS.

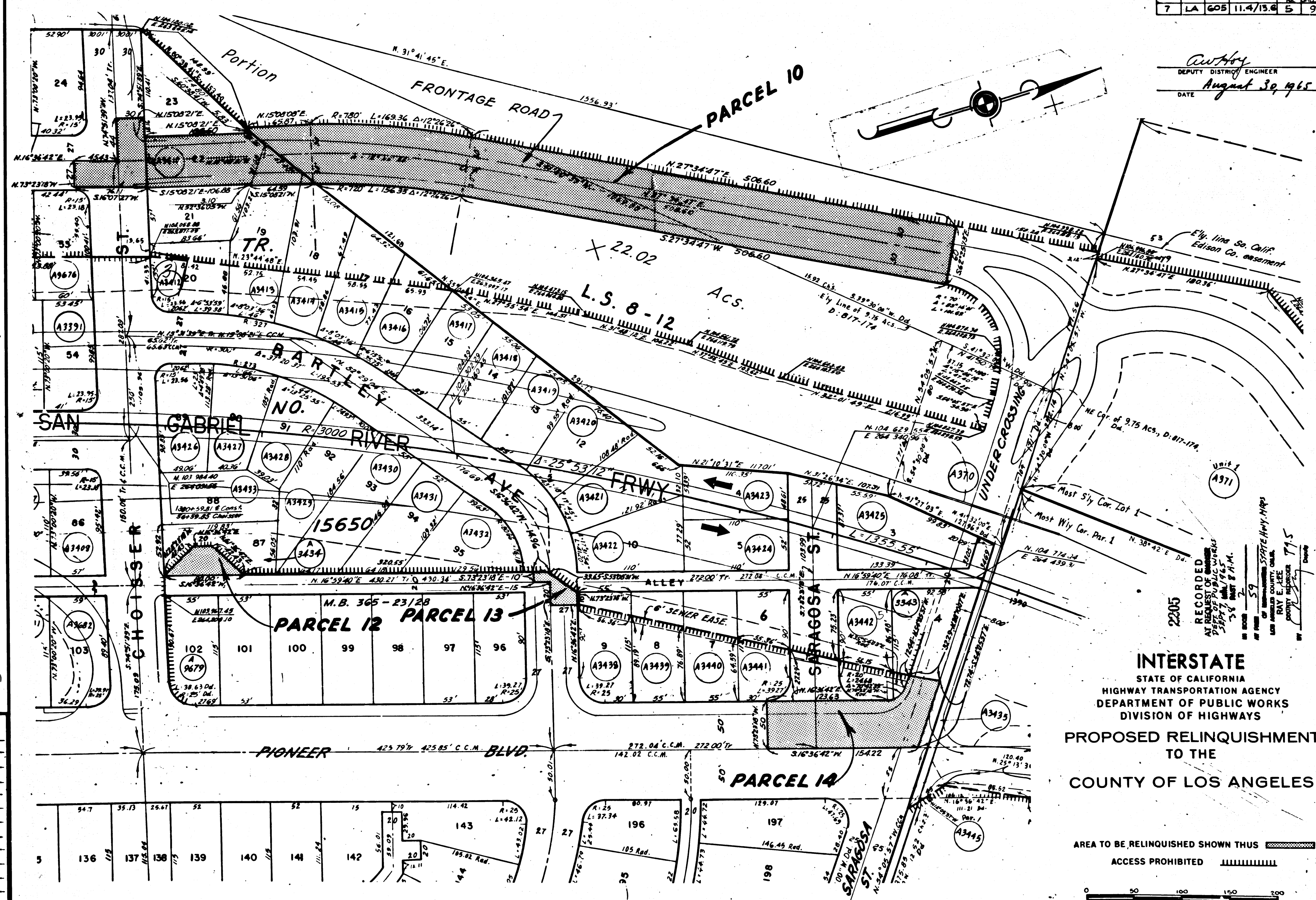
NO. 15650
 M.B. 365 - 23/28

2205
 RECORDED
 AT REQUEST OF
 DEPT. OF PUBLIC WORKS
 SEPT. 7, 1965
 3 8 AM.
 58
 OF ENGINEERING STATE HWY. MAPS
 LOS ANGELES COUNTY, CALIF.
 RAY E. LEE
 COUNTY RECORDER
 P94
 Deputy

STATE OF CALIFORNIA
 HIGHWAY TRANSPORTATION AGENCY
 DEPARTMENT OF PUBLIC WORKS
 DIVISION OF HIGHWAYS
 PROPOSED RELINQUISHMENT
 TO THE
 COUNTY OF LOS ANGELES
 INTERSTATE
 AREA TO BE RELINQUISHED SHOWN THUS [hatched pattern]
 ACCESS PROHIBITED [hatched pattern]



Authoy
 DEPUTY DISTRICT ENGINEER
 August 30, 1965
 DATE

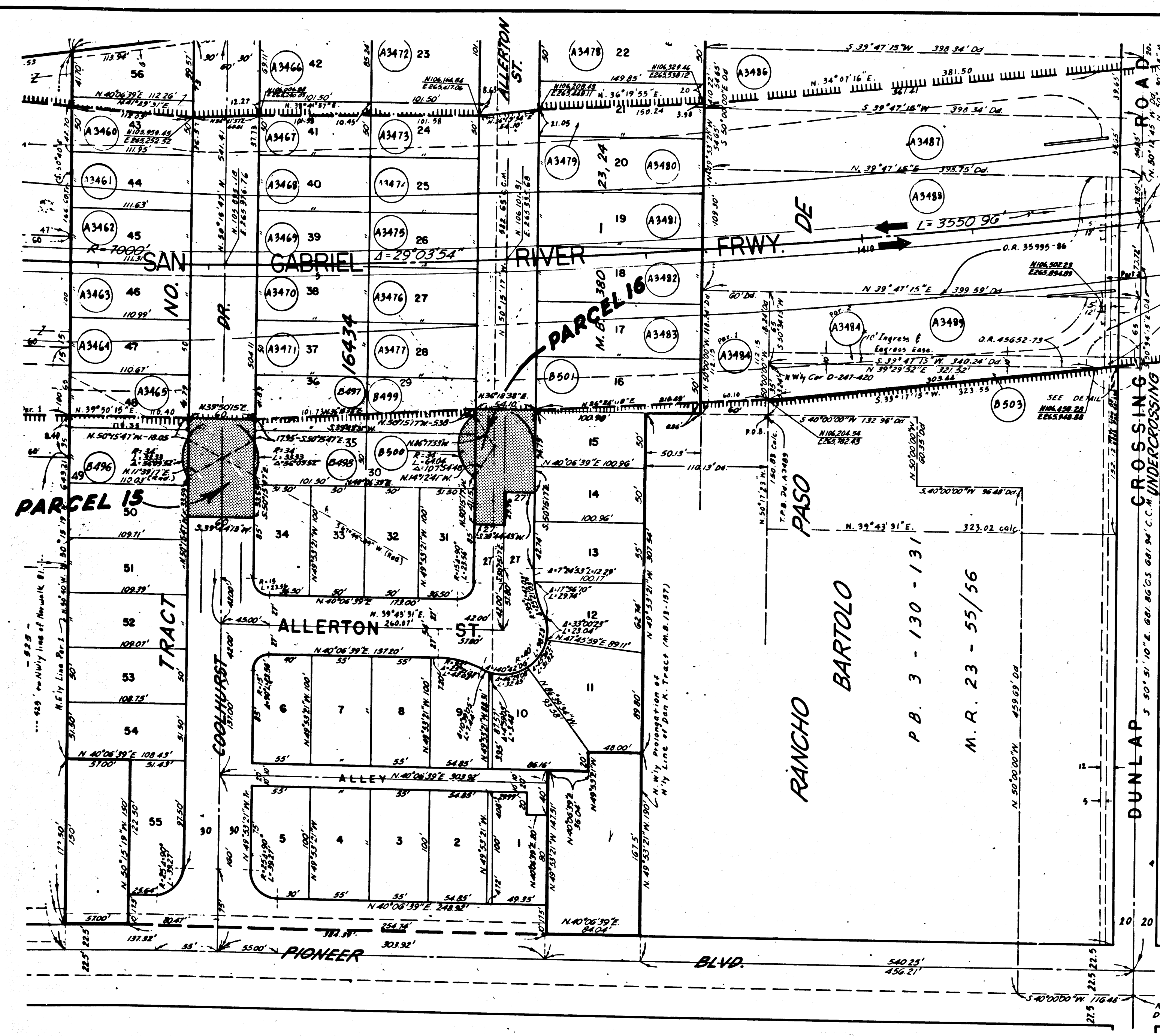


REL-409
 DWN BY R.S.D.
 CLK BY J.M.
 CKD BY J.D.
 BASE MAP NO'S
 F-1963, E-1964
 REF. MAP NO'S
 AS BUILT NO'S
 156-16

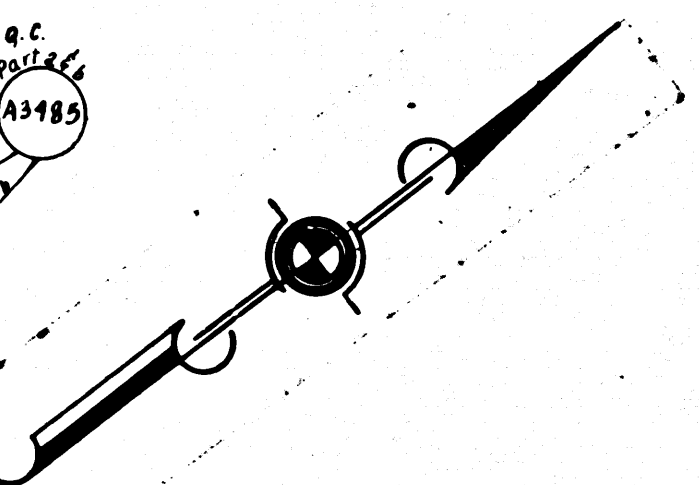
INTERSTATE
 STATE OF CALIFORNIA
 HIGHWAY TRANSPORTATION AGENCY
 DEPARTMENT OF PUBLIC WORKS
 DIVISION OF HIGHWAYS
 PROPOSED RELINQUISHMENT
 TO THE
 COUNTY OF LOS ANGELES

AREA TO BE RELINQUISHED SHOWN THUS
 ACCESS PROHIBITED

C. W. Hoy
 DEPUTY DISTRICT ENGINEER
 DATE August 30, 1965



REL-409
 DRN BY RSD
 CLC BY J.N.
 CTD BY J.D.
 BASE MAP NO'S
 F-1963, F-1964
 REF. MAP NO'S
 AS BUILT NO'S
 156-16



2205
 RECORDED
 AT REQUEST OF OWNER
 DEPT. OF PUBLIC WORKS
 SEPT. 7, 1965
 3 8 PM 8 A.M.
 IN BOOK 2
 AT PAGE 60
 OF THE UNIMPROVED STATE HWY. MAPS
 LOS ANGELES COUNTY, CALIF.
 RAY E. LEE
 COUNTY RECORDER Pg. 6
 Deputy

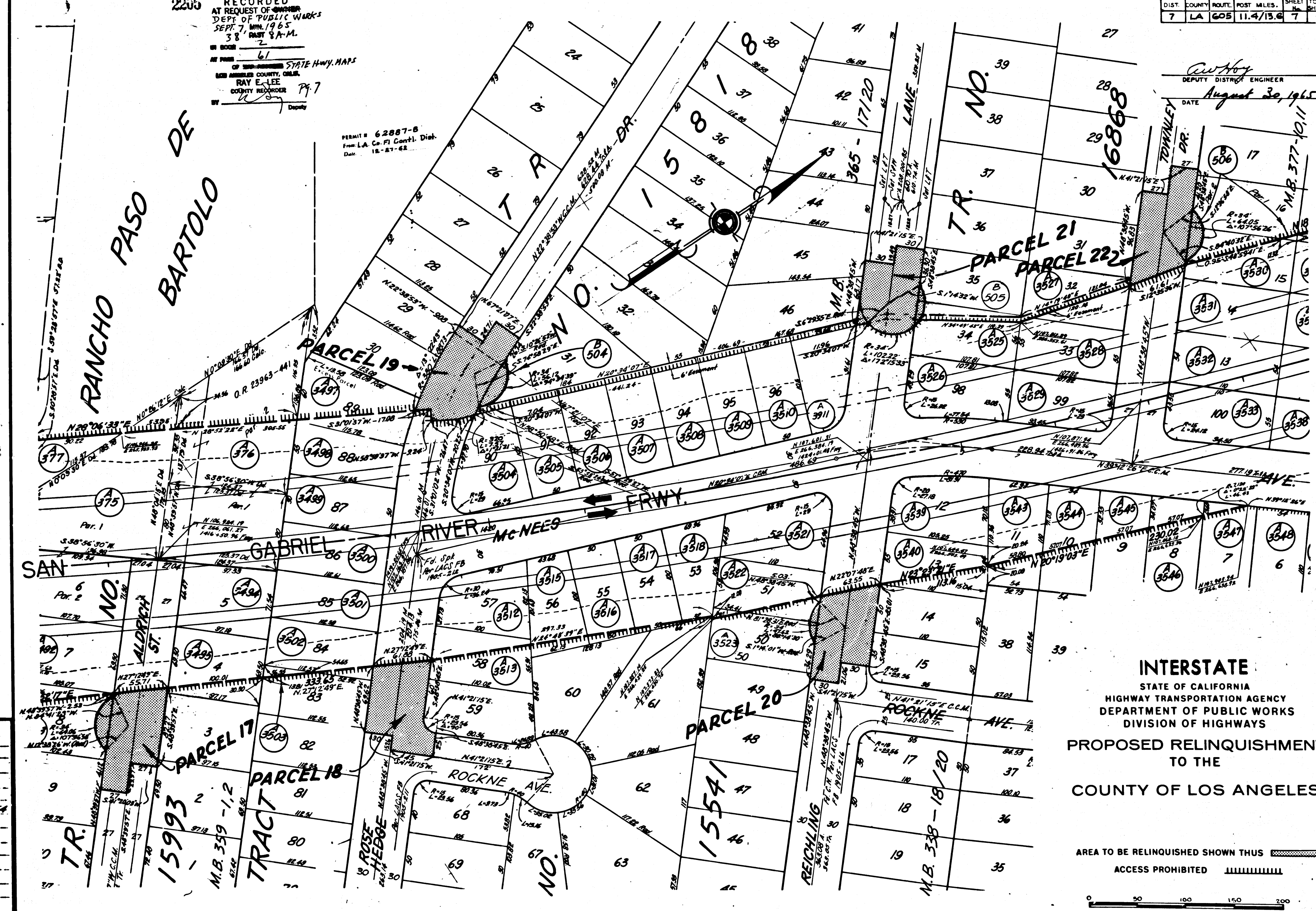
INTERSTATE
 STATE OF CALIFORNIA
 HIGHWAY TRANSPORTATION AGENCY
 DEPARTMENT OF PUBLIC WORKS
 DIVISION OF HIGHWAYS
 PROPOSED RELINQUISHMENT
 TO THE
 COUNTY OF LOS ANGELES

AREA TO BE RELINQUISHED SHOWN THUS [shaded box]
 ACCESS PROHIBITED [hatched box]
 0 50 100 150 200

2205 RECORDED
 AT REQUEST OF
 DEPT. OF PUBLIC WORKS
 SEPT. 7, 1965
 3 8 P.M. 3 A.M.
 IN BOOK 2
 61
 OF THE STATE HWY. MAPS
 LOS ANGELES COUNTY, CALIF.
 RAY E. LEE
 COUNTY RECORDER Pg. 7
 Deputy

PERMIT # 62887-B
 From L.A. Co. Pl. Contl. Dist.
 Dat. 12-27-62

C. W. HOY
 DEPUTY DISTRICT ENGINEER
 DATE August 30, 1965



REL- 409
 DRN BY RSD
 CLC BY J.N.
 CKD BY J.D.
 BASE MAP NOS
 F-1963, F-1964
 REF. MAP NOS
 AS BUILT NOS
 154-16

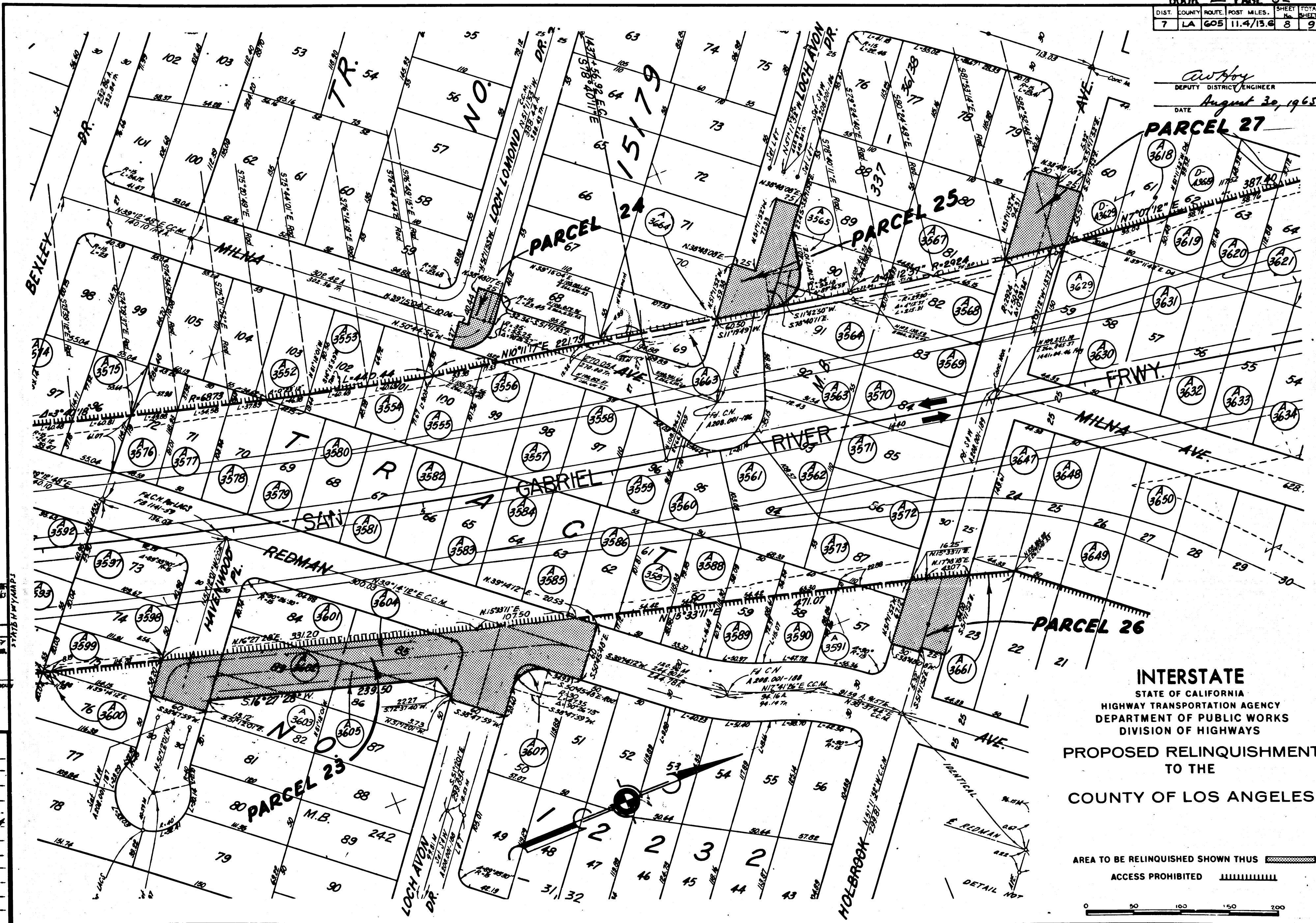
INTERSTATE
 STATE OF CALIFORNIA
 HIGHWAY TRANSPORTATION AGENCY
 DEPARTMENT OF PUBLIC WORKS
 DIVISION OF HIGHWAYS
 PROPOSED RELINQUISHMENT
 TO THE
 COUNTY OF LOS ANGELES

AREA TO BE RELINQUISHED SHOWN THUS 
 ACCESS PROHIBITED 



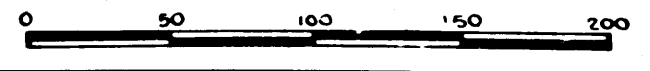
DIST.	COUNTY	ROUTE	POST MILES.	SHEET No.	TOTAL SHEETS
7	LA	605	11.4/13.6	8	9

Arthur
 DEPUTY DISTRICT ENGINEER
 DATE August 30, 1965



INTERSTATE
 STATE OF CALIFORNIA
 HIGHWAY TRANSPORTATION AGENCY
 DEPARTMENT OF PUBLIC WORKS
 DIVISION OF HIGHWAYS
 PROPOSED RELINQUISHMENT
 TO THE
 COUNTY OF LOS ANGELES

AREA TO BE RELINQUISHED SHOWN THUS 
 ACCESS PROHIBITED 



2205

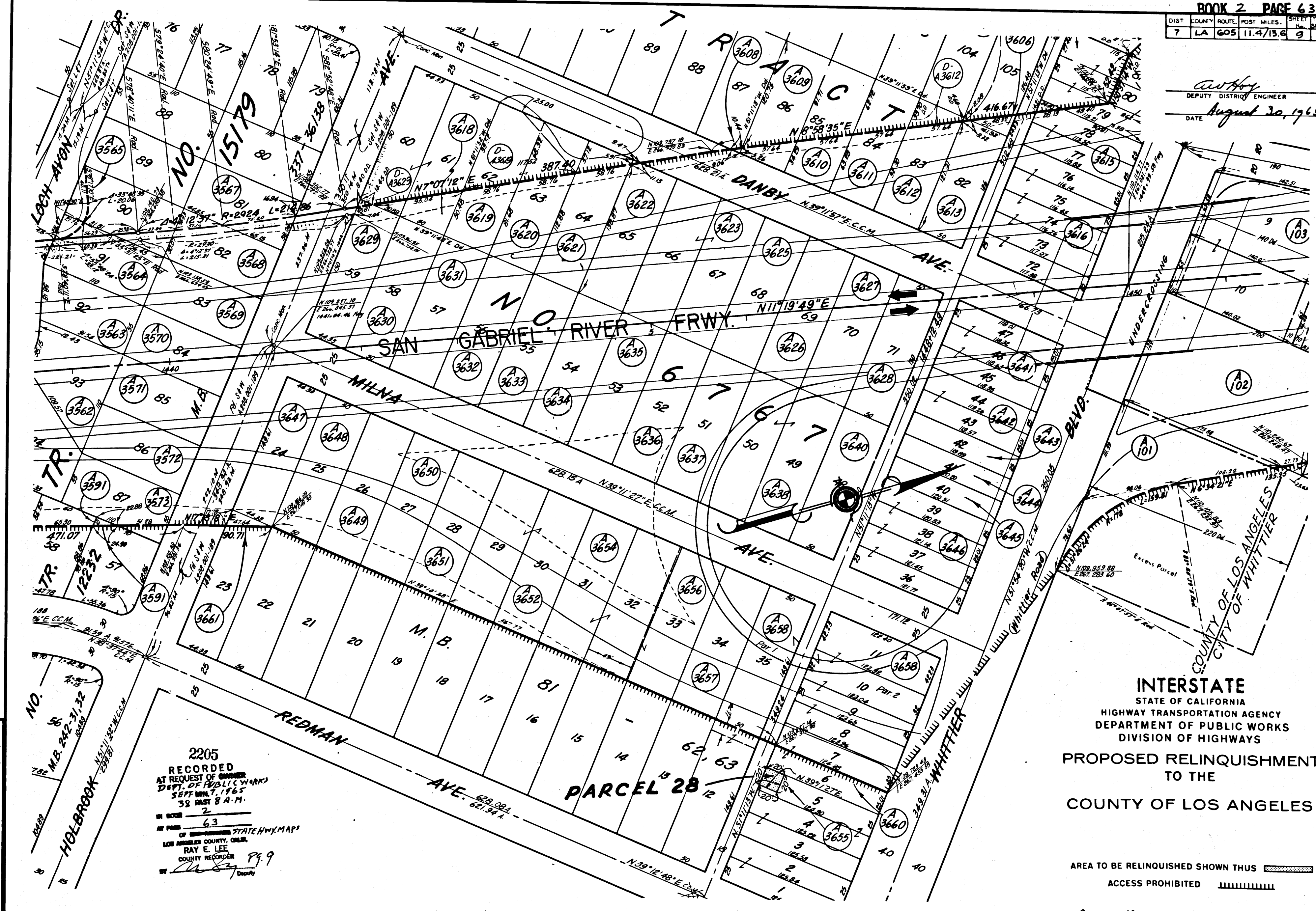
RECORDED
 AT REQUEST OF
 DEPT. OF PUBLIC WORKS
 SEPT. 7, 1965
 3 2 EAST 8 AM
 IN BOOK 2
 PAGE 62
 OF RECORDS
 FOR ANGELES COUNTY, CALIF.
 RAY E. LBE
 COUNTY RECORDER
 Pp. 8

REL-409
 DRN BY B.S.D.
 C/LC BY J.N.
 C/D BY J.D.
 BASE MAP NOS.
 F-1963, F-1964
 REF. MAP NOS.
 AS BUILT NOS.
 156-16

DIST.	COUNTY	ROUTE	POST MILES.	SHEET No.	TOTAL SHEETS
7	LA	605	11.4/13.6	9	9

awHoy
DEPUTY DISTRICT ENGINEER

DATE August 30, 1965



REL-409
 DWN B. R.S.D.
 CLK BY J.V.
 CKD BY J.D.
 BASE MAP NOS.
 E-1963, F-1964
 REF. MAP NOS.
 AS BUILT NOS.
 156-16

2205
 RECORDED
 AT REQUEST OF ENGINEER
 DEPT. OF PUBLIC WORKS
 SEPT. 17, 1965
 53 EAST 8 A.M.
 IN BOOK 2
 PAGE 63
 OF SUPERSEDED STATE HWY. MAPS
 LOS ANGELES COUNTY, CALIF.
 RAY E. LEE
 COUNTY RECORDER
 BY *[Signature]* Deputy

INTERSTATE
 STATE OF CALIFORNIA
 HIGHWAY TRANSPORTATION AGENCY
 DEPARTMENT OF PUBLIC WORKS
 DIVISION OF HIGHWAYS
 PROPOSED RELINQUISHMENT
 TO THE
 COUNTY OF LOS ANGELES

