

CITY	COUNTY	ROUTE	POST MILE	SHEET No.	TOTAL SHEETS
7	L.A.	42	19.2/19.3	1	2

STATE OF CALIFORNIA
HIGHWAY TRANSPORTATION AGENCY
DEPARTMENT OF PUBLIC WORKS
DIVISION OF HIGHWAYS

RIGHT OF WAY MAPS OF
STATE HIGHWAY

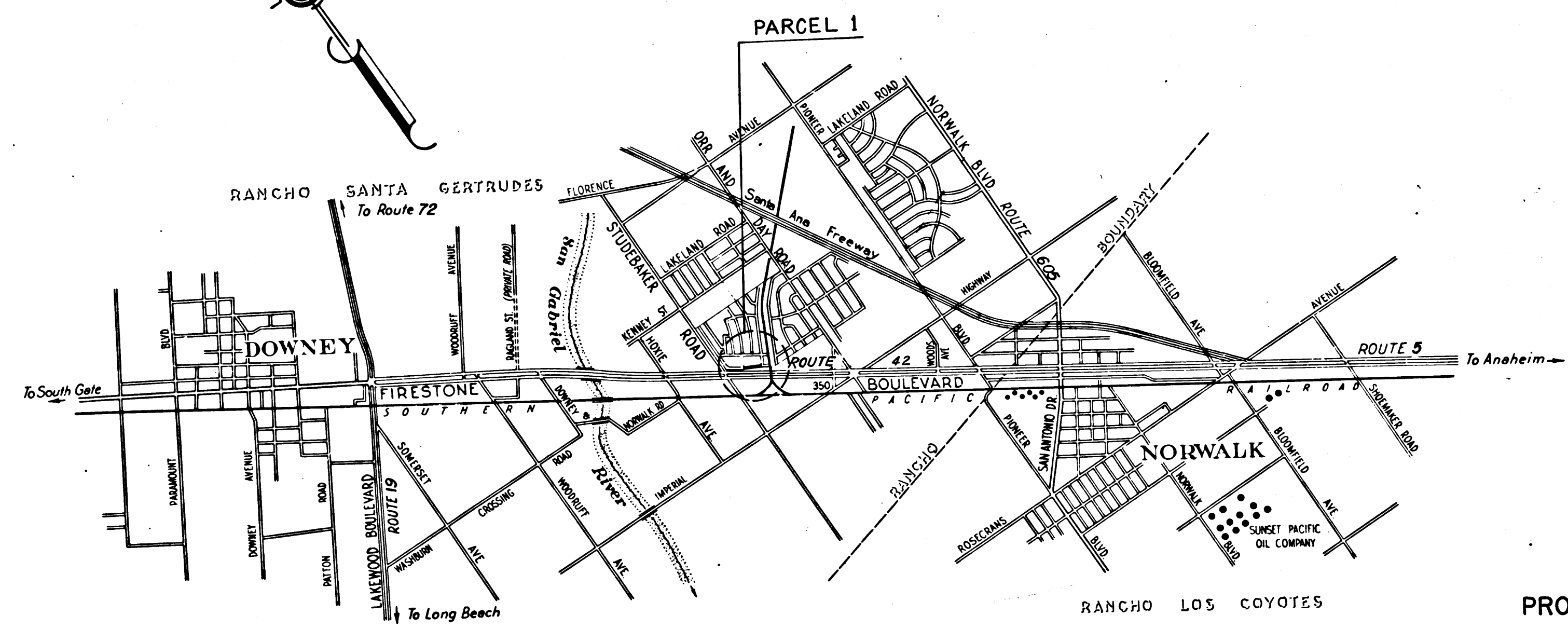
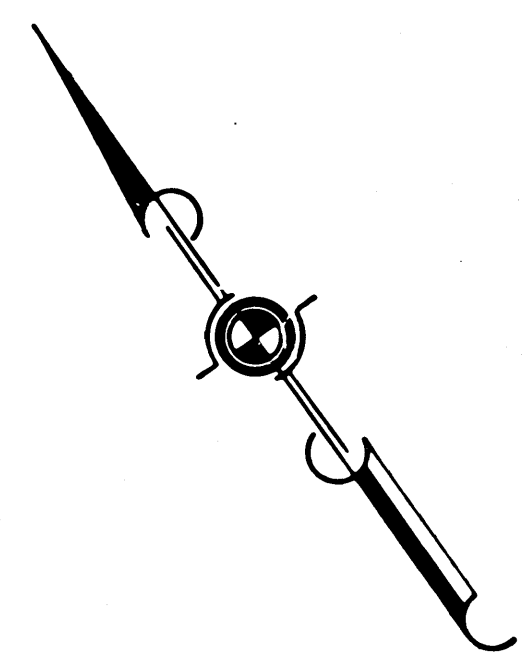
In the City of Norwalk, between Studebaker Road and Orr and Day Road

C. W. Hoy
DEPUTY DISTRICT ENGINEER
SEPTEMBER 23-1965
DATE

2917

RECORDED
AT REQUEST OF
DEPT. OF PUBLIC WORKS
SEPT. 29, 1965
22 MIN PAST 9 A.M.

BOOK 2
AT PAGE 74
OF STATE HIGHWAY MAPS
LOS ANGELES COUNTY, CALIF.
BY RAY E. LEE
COUNTY RECORDER
BY *C. W. Hoy* FREE
Deputy



RANCHO LOS COYOTES

PROPOSED RELINQUISHMENT

SCALE



REL- 440
DR'N BY D.A.C.
C'LC BY R.W.Q.
CKD BY R.V.G.
BASE MAP NO'S
P2-5335
REF MAP NOS
AS BUILT NO'S
LA1743-1,3,4-022

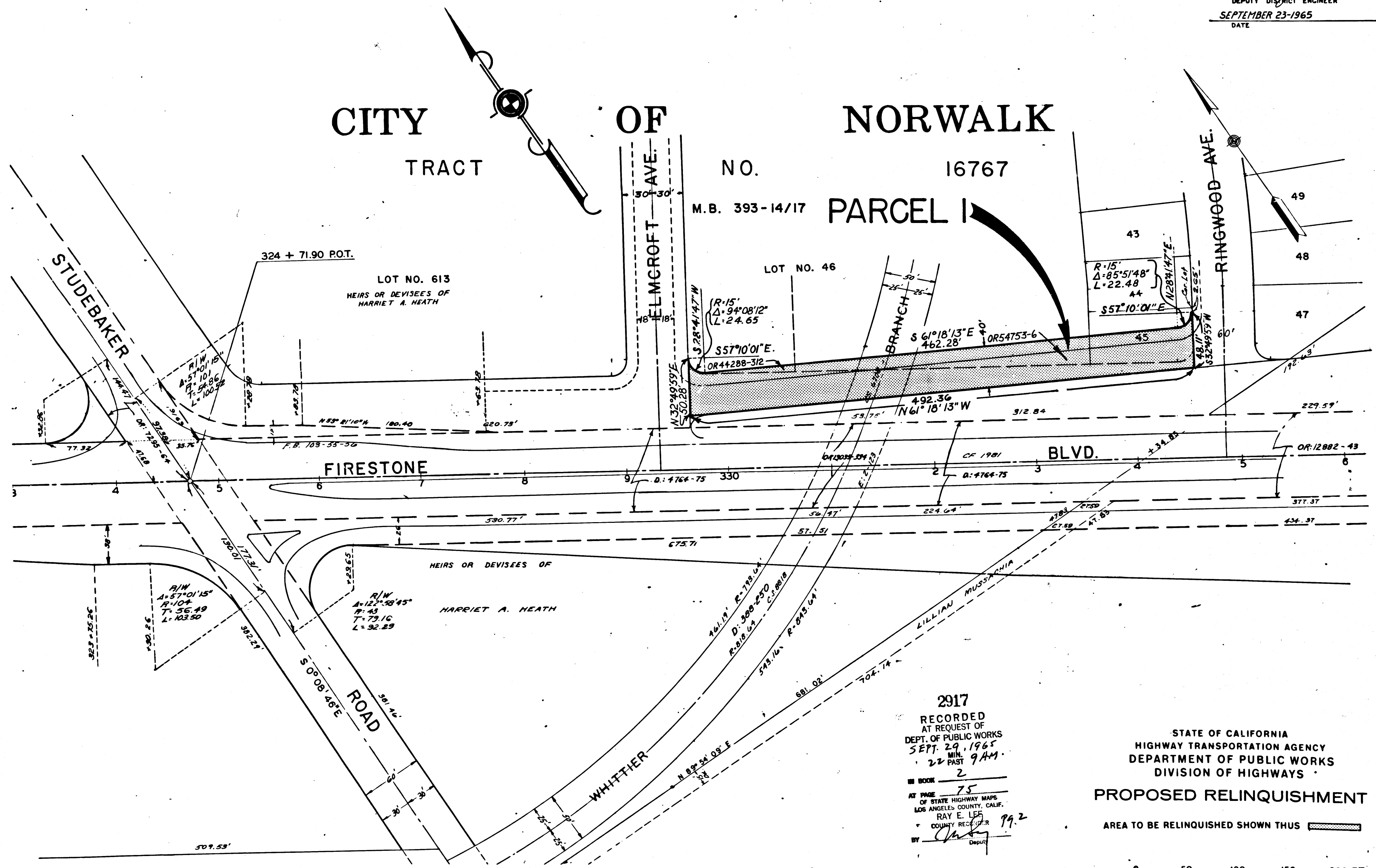
DIST.	COUNTY	ROUTE	POST MILES	SHEET No.	TOTAL SHEETS
7	LA.	42	192/193	2	2

Anthony
 DEPUTY DISTRICT ENGINEER
 SEPTEMBER 23-1965
 DATE

CITY OF NORWALK

TRACT NO. 16767

M.B. 393-14/17 PARCEL I



REL-440
 DRN BY DAC
 C/LC BY R.W.O.
 CK'D BY R.V.G.
 BASE MAP NO'S
 P2-5335
 REF. MAP NOS.
 AS BUILT NO'S
 LA1743-134 of 22

2917
 RECORDED
 AT REQUEST OF
 DEPT. OF PUBLIC WORKS
 SEPT. 29, 1965
 22 MIN. 9 AM
 BOOK 2
 AT PAGE 75
 OF STATE HIGHWAY MAPS
 LOS ANGELES COUNTY, CALIF.
 RAY E. LEE
 COUNTY RECORDER
 BY *[Signature]* Deputy

STATE OF CALIFORNIA
 HIGHWAY TRANSPORTATION AGENCY
 DEPARTMENT OF PUBLIC WORKS
 DIVISION OF HIGHWAYS

PROPOSED RELINQUISHMENT

AREA TO BE RELINQUISHED SHOWN THUS

