

2:45 PM BK 2 PGS. 76-79.

BOOK 2 PAGE 76 PG 76

DIST.	COUNTY	ROUTE	POST MILES.	SHEET No.	TOTAL SHEETS
7	LA	215	00-3.7	1	4

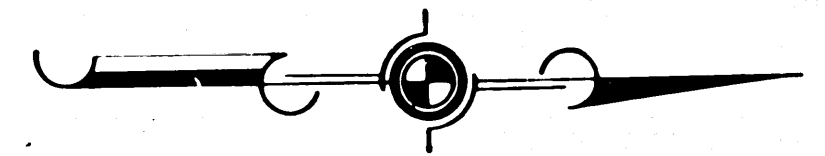
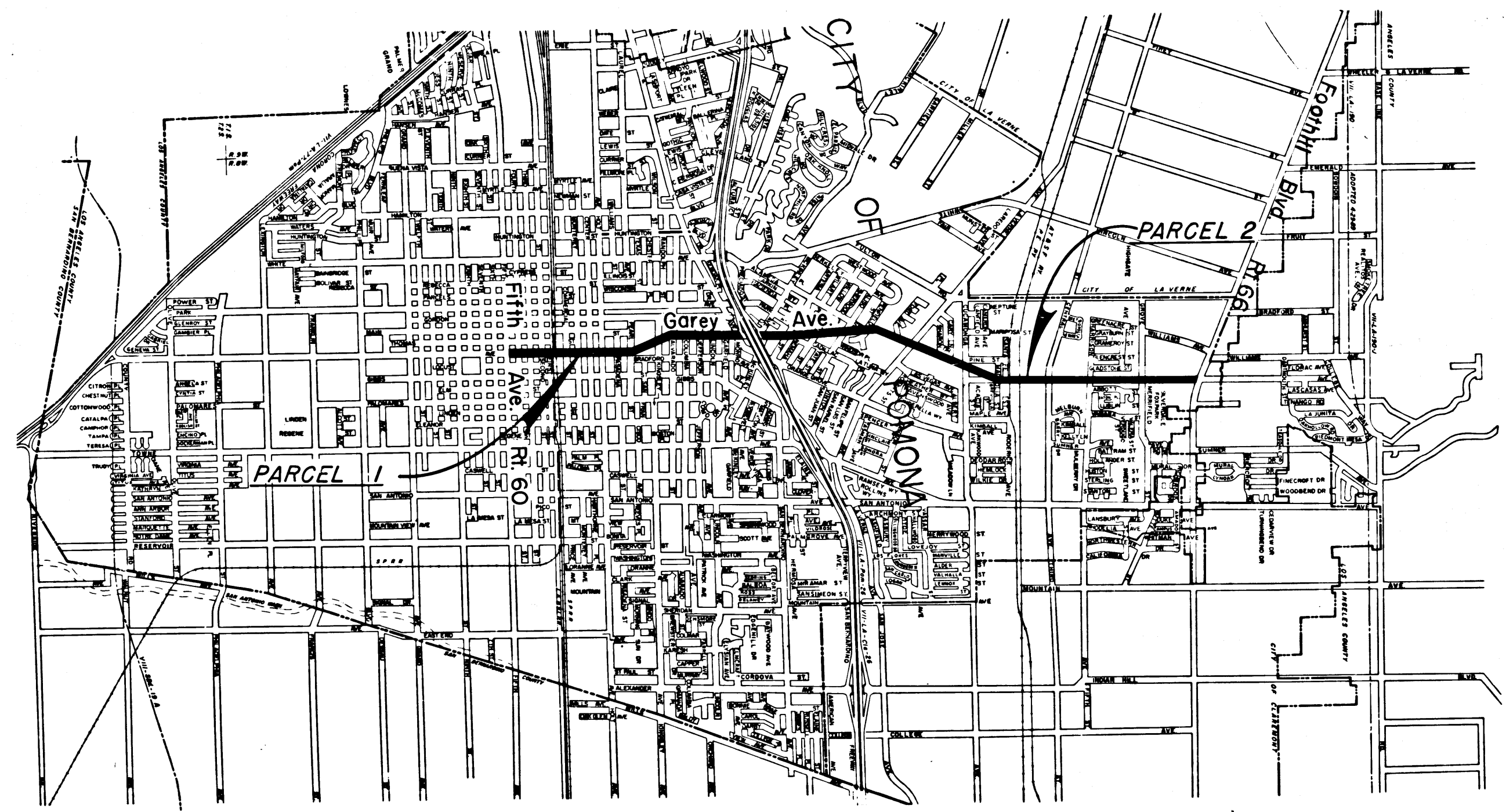
STATE OF CALIFORNIA
 TRANSPORTATION AGENCY
 DEPARTMENT OF PUBLIC WORKS
 DIVISION OF HIGHWAYS

RIGHT OF WAY MAPS OF
STATE HIGHWAY

In The City of Pomona
 Between Rt. 60 and Rt. 66

3645
 DEPUTY DISTRICT ENGINEER
 DATE Oct. 29, 1965

RECORDED
 AT REQUEST OF
 DEPT. OF PUBLIC WORKS
 NOV 3 1965
 1:45 PM
 BOOK 2
 PAGE 76
 COUNTY RECORDER
 RAY E. HILL
 Deputy
 FREE



REL-449
 DWN BY BJK
 C'LC BY EM
 CK'D BY T.K.
 BASE MAP NO'S
 F-1869
 F-1870
 REF. MAP NOS.
 AS BUILT NO'S

STATE OF CALIFORNIA
 TRANSPORTATION AGENCY
 DEPARTMENT OF PUBLIC WORKS
 DIVISION OF HIGHWAYS
PROPOSED RELINQUISHMENT

AREA TO BE RELINQUISHED SHOWN THUS

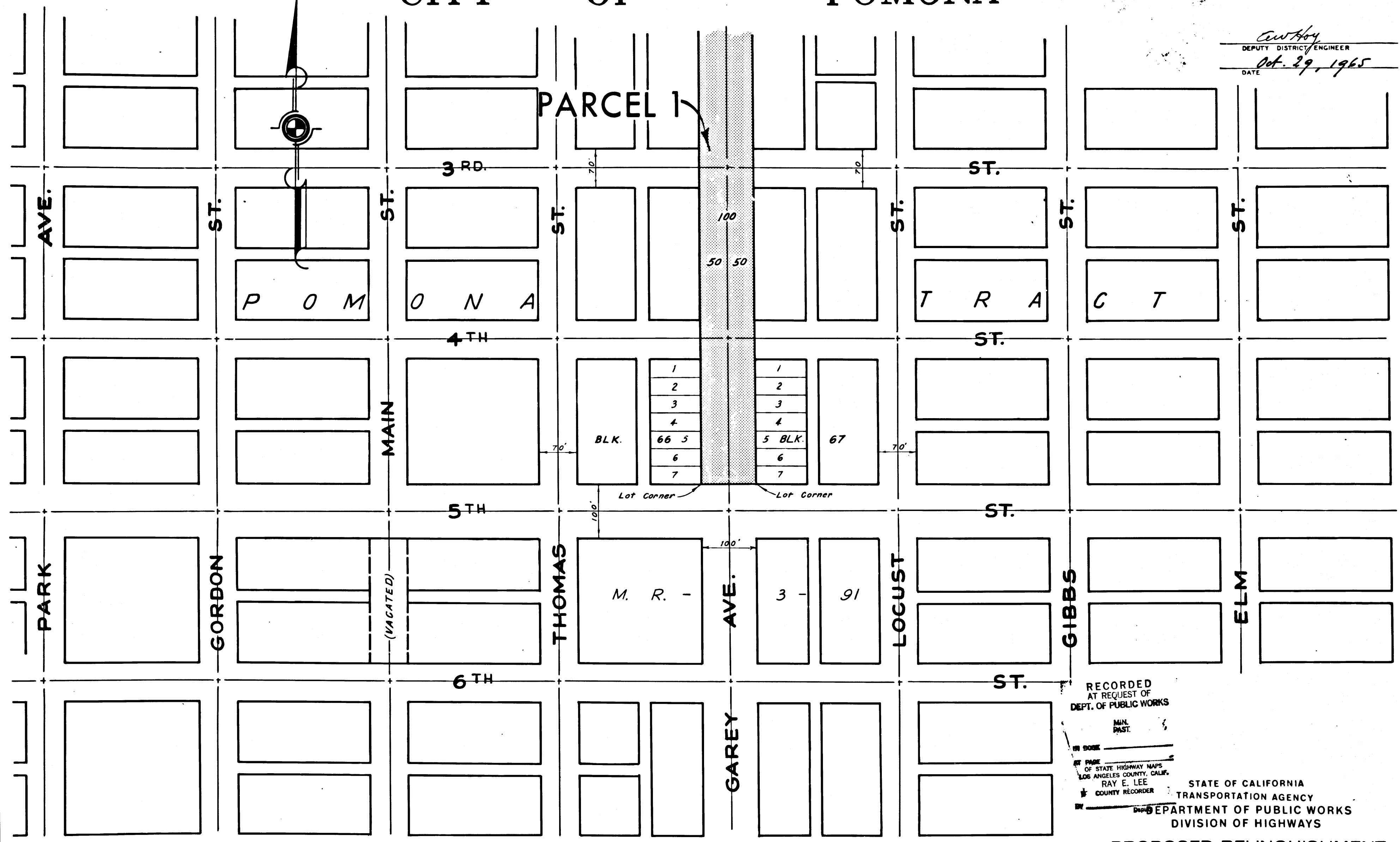


CITY OF POMONA

3645

DIST.	COUNTY	ROUTE	POST MILES.	SHEET No.	TOTAL SHEETS
7	LA	215	0.0-3.7	2	4

C. W. Hoy
DEPUTY DISTRICT ENGINEER
DATE Oct. 29, 1965



REL-449
 DRN BY R.C.
 CLC BY _____
 CRD BY F.M.
 BASE MAP NO'S
F-1869
F-1870
 REF. MAP NO'S _____
 AS B' LT NO'S _____

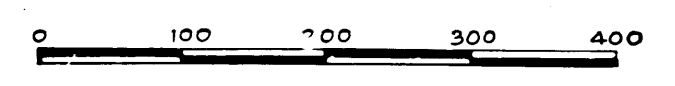
RECORDED
 AT REQUEST OF
 DEPT. OF PUBLIC WORKS
 MIN. PAST.

IN SORE _____
 OF STATE HIGHWAY MAPS
 LOS ANGELES COUNTY, CALIF.
 RAY E. LEE
 COUNTY RECORDER

STATE OF CALIFORNIA
 TRANSPORTATION AGENCY
 DEPARTMENT OF PUBLIC WORKS
 DIVISION OF HIGHWAYS

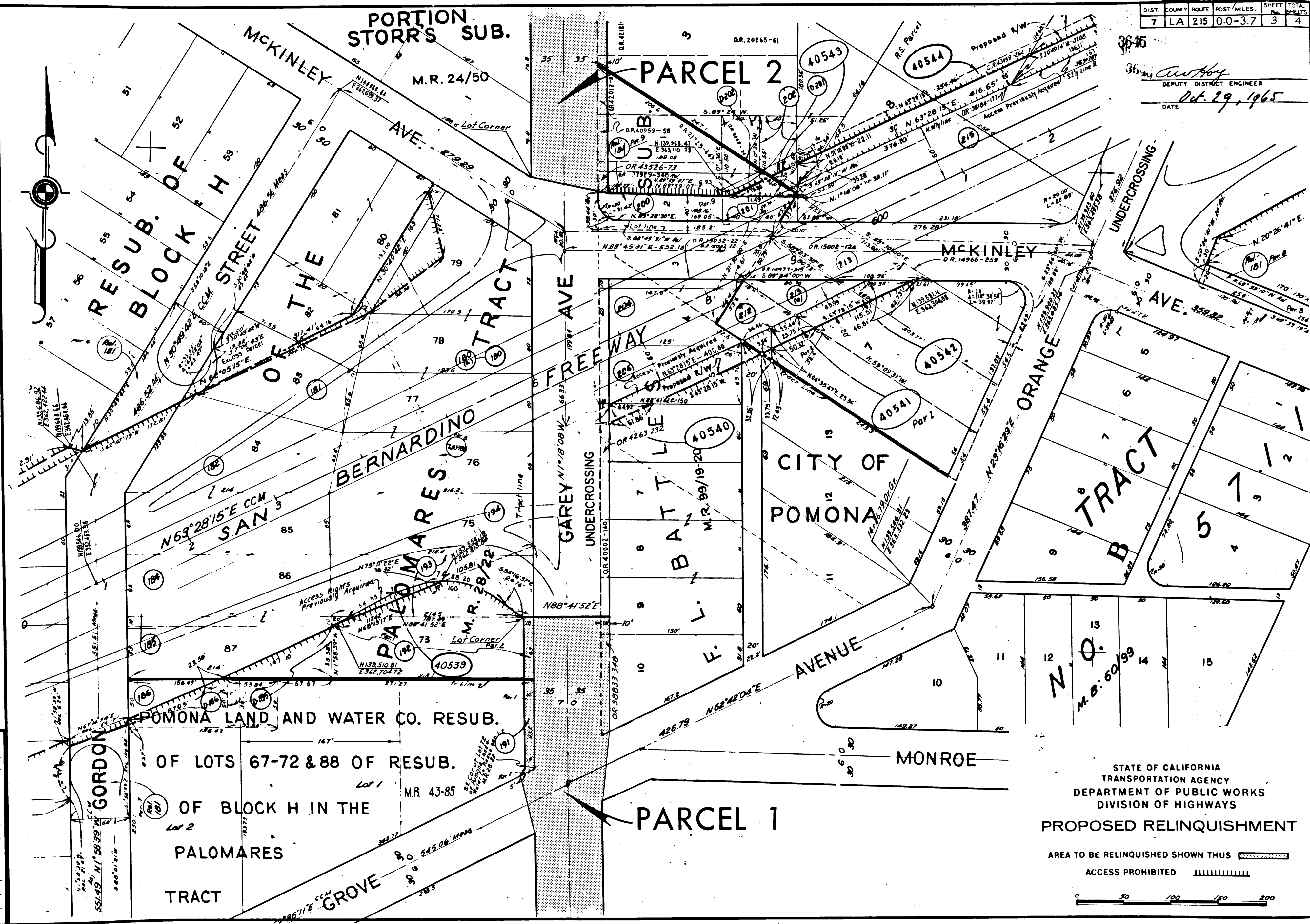
PROPOSED RELINQUISHMENT

AREA TO BE RELINQUISHED SHOWN THUS
 ACCESS PROHIBITED



DIST.	COUNTY	ROUTE	POST MILES.	SHEET No.	TOTAL SHEETS
7	LA	215	0.0-3.7	3	4

3645
 3645 *Anthony*
 DEPUTY DISTRICT ENGINEER
 DATE *Oct. 29, 1965*



REL- 449
 DRN BY BJK
 CLC BY F.M.
 CRD BY T.K.
 BASE MAP NO'S
 F1869, F1870
 REF. MAP NO'S
 AS BUILT NO'S

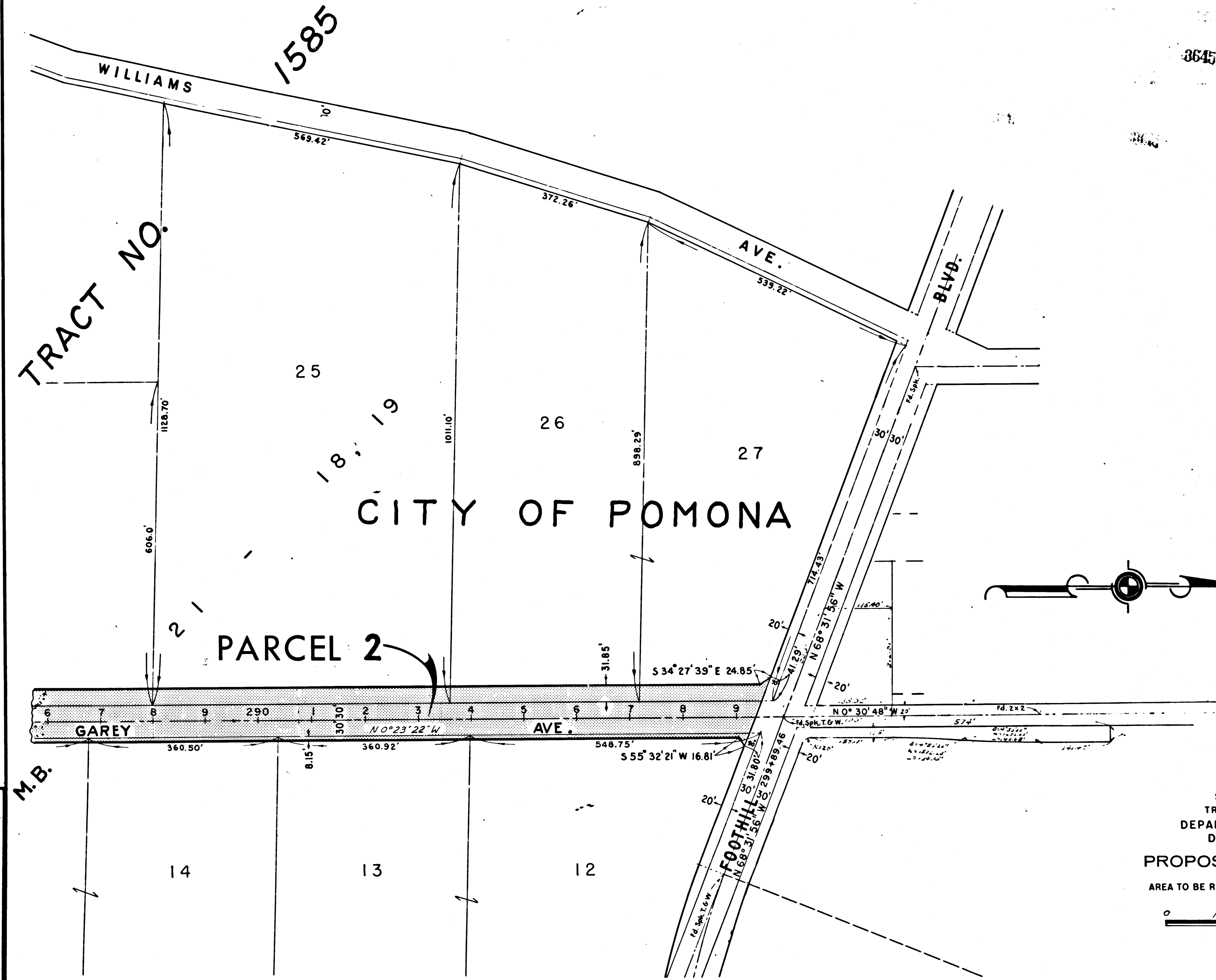
STATE OF CALIFORNIA
 TRANSPORTATION AGENCY
 DEPARTMENT OF PUBLIC WORKS
 DIVISION OF HIGHWAYS
PROPOSED RELINQUISHMENT

AREA TO BE RELINQUISHED SHOWN THUS
 ACCESS PROHIBITED
 0 50 100 150 200

DIST.	COUNTY	ROUTE	POST MILES.	SHEET No.	TOTAL SHEETS
7	LA	215	00-3.7	4	4

3645

Anthony
 DEPUTY DISTRICT ENGINEER
 DATE *Oct. 29, 1965*



REL- 449
 DRN BY BJK
 C'LC BY FM
 CK'D BY T.K.
 BASE MAP NO'S...
 P2290
 REF. MAP NO'S...
 AS BUILT NO'S...

STATE OF CALIFORNIA
 TRANSPORTATION AGENCY
 DEPARTMENT OF PUBLIC WORKS
 DIVISION OF HIGHWAYS
PROPOSED RELINQUISHMENT
 AREA TO BE RELINQUISHED SHOWN THUS

0 100 200 300 400