

DIST	COUNTY	ROUTE	POST MILES	SHEET NO.	TOTAL SHEETS
7	LA.	605	4.2/4.7	1	2

STATE OF CALIFORNIA
 TRANSPORTATION AGENCY
 DEPARTMENT OF PUBLIC WORKS
 DIVISION OF HIGHWAYS

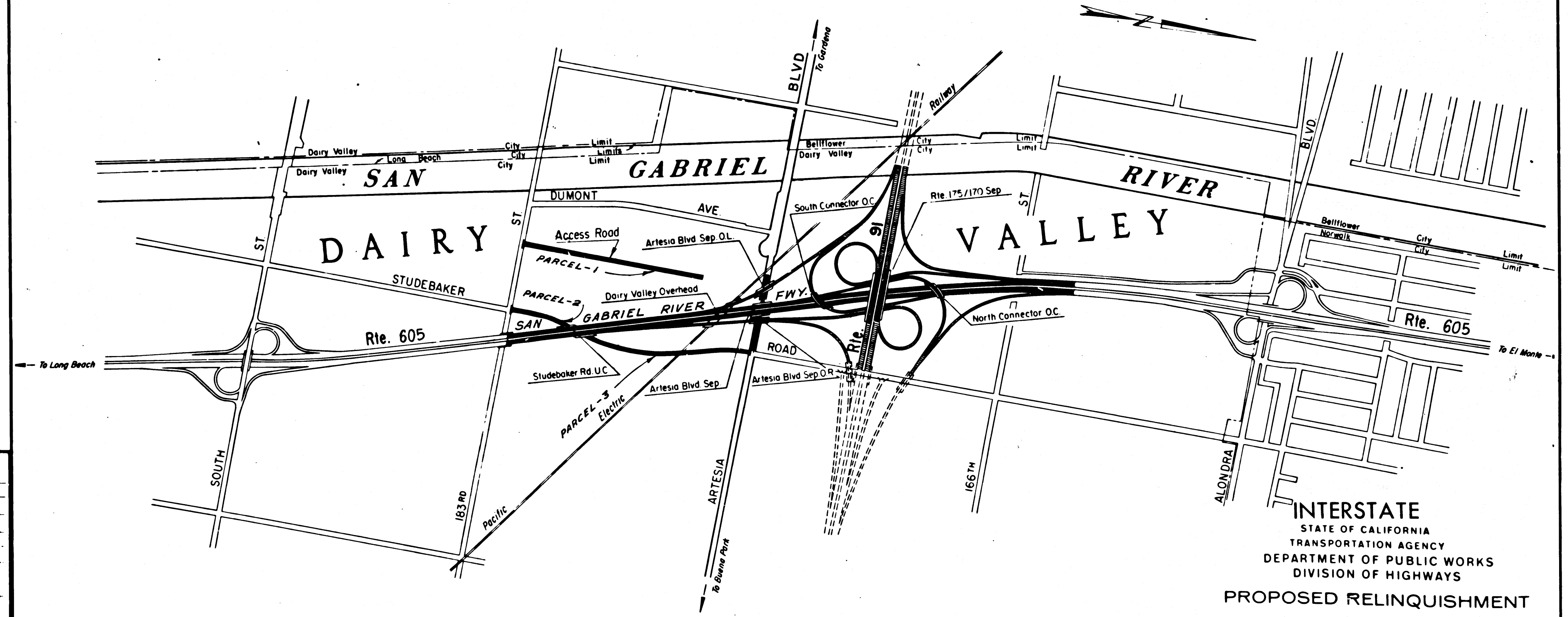
Ray E. Lee
 DEPUTY DISTRICT ENGINEER
 DATE Nov. 10, 1965

2685
 RECORDED
 AT REQUEST OF
 DEPT. OF PUBLIC WORKS
 NOV. 17, 1965
 59 MIN. PAST 9 AM.

IN BOOK 2
 AT PAGE 82
 OF STATE HIGHWAY MAPS
 LOS ANGELES COUNTY, CALIF.
 RAY E. LEE
 COUNTY RECORDER
 BY *Ray E. Lee* FREE

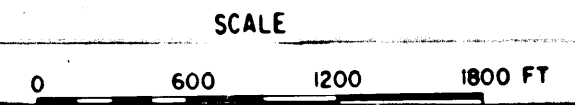
RIGHT OF WAY MAPS OF
STATE HIGHWAY

In Los Angeles County in Dairy Valley on Route 605 between 183rd Street and 0.1 mile north of 166th Street and on Route 91 between San Gabriel River and Studebaker Road



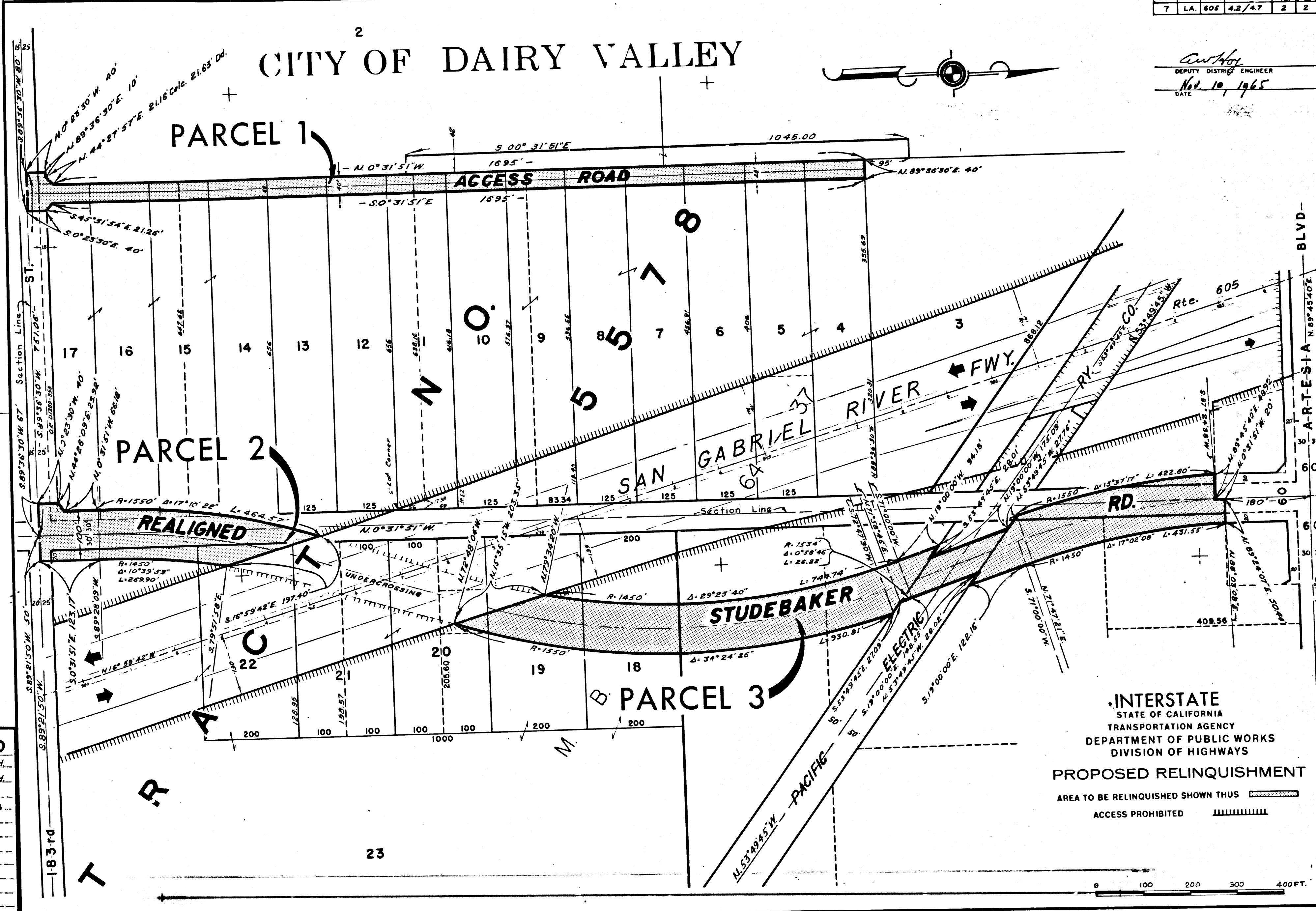
REL-410
 DRN BY J.W.H.
 C/LC BY J.W.H.
 CK'D BY J.F.
 BASE MAP NO'S F-1957
 REF. MAP NO'S
 AS BUILT NO'S

INTERSTATE
 STATE OF CALIFORNIA
 TRANSPORTATION AGENCY
 DEPARTMENT OF PUBLIC WORKS
 DIVISION OF HIGHWAYS
 PROPOSED RELINQUISHMENT



CITY OF DAIRY VALLEY

Anthony
 DEPUTY DISTRICT ENGINEER
 Nov 10, 1965
 DATE



REL-410
 DRN BY J.W.H.
 C/LC BY J.W.H.
 CK'D BY J.E.
 BASE MAP NO'S
 F-1957
 REF. MAP NO'S
 AS BUILT NO'S

INTERSTATE
 STATE OF CALIFORNIA
 TRANSPORTATION AGENCY
 DEPARTMENT OF PUBLIC WORKS
 DIVISION OF HIGHWAYS
 PROPOSED RELINQUISHMENT
 AREA TO BE RELINQUISHED SHOWN THUS
 ACCESS PROHIBITED

0 100 200 300 400 FT.