

BOOK 2		PAGE 84			
DIST	COUNTY	ROUTE	POST MILES	SHEET No.	TOTAL SHEETS
7	LA	5	37.4/40.2	1	12

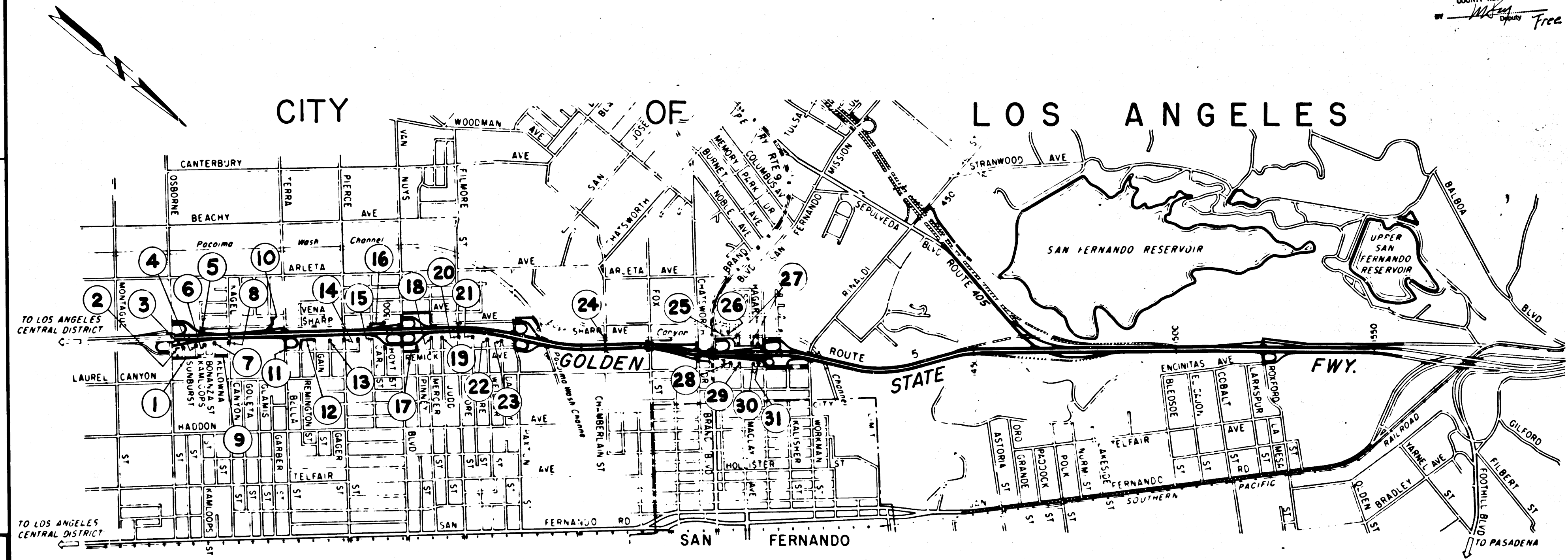
STATE OF CALIFORNIA
 TRANSPORTATION AGENCY
 DEPARTMENT OF PUBLIC WORKS
 DIVISION OF HIGHWAYS

Anthony
 DEPUTY DISTRICT ENGINEER
 DATE Nov. 15, 1965

RIGHT OF WAY MAPS OF
STATE HIGHWAY

In Los Angeles County in Los Angeles
 between Osborne Street and 0.3 mile north of San Fernando Road

3231
 RECORDED
 AT REQUEST OF
 DEPT. OF PUBLIC WORKS
 Nov. 19, 1965
 15 PAST 9AM.
 IN BOOK 2
 ON PAGE 84
 OF STATE HIGHWAY MAPS
 OF LOS ANGELES COUNTY, CALIF.
 RAY E. LEE
 COUNTY RECORDER
W. Lee Deputy *Free*



REL-414
 DYN BY W.F.S.
 C'LC BY J.W.H.
 CKD BY FM
 BASE MAP NOS...
F-1298, F-1299
F-1300, F-1301, F-1302
 REF. MAP NOS...
 AS BUILT NOS...
141-6

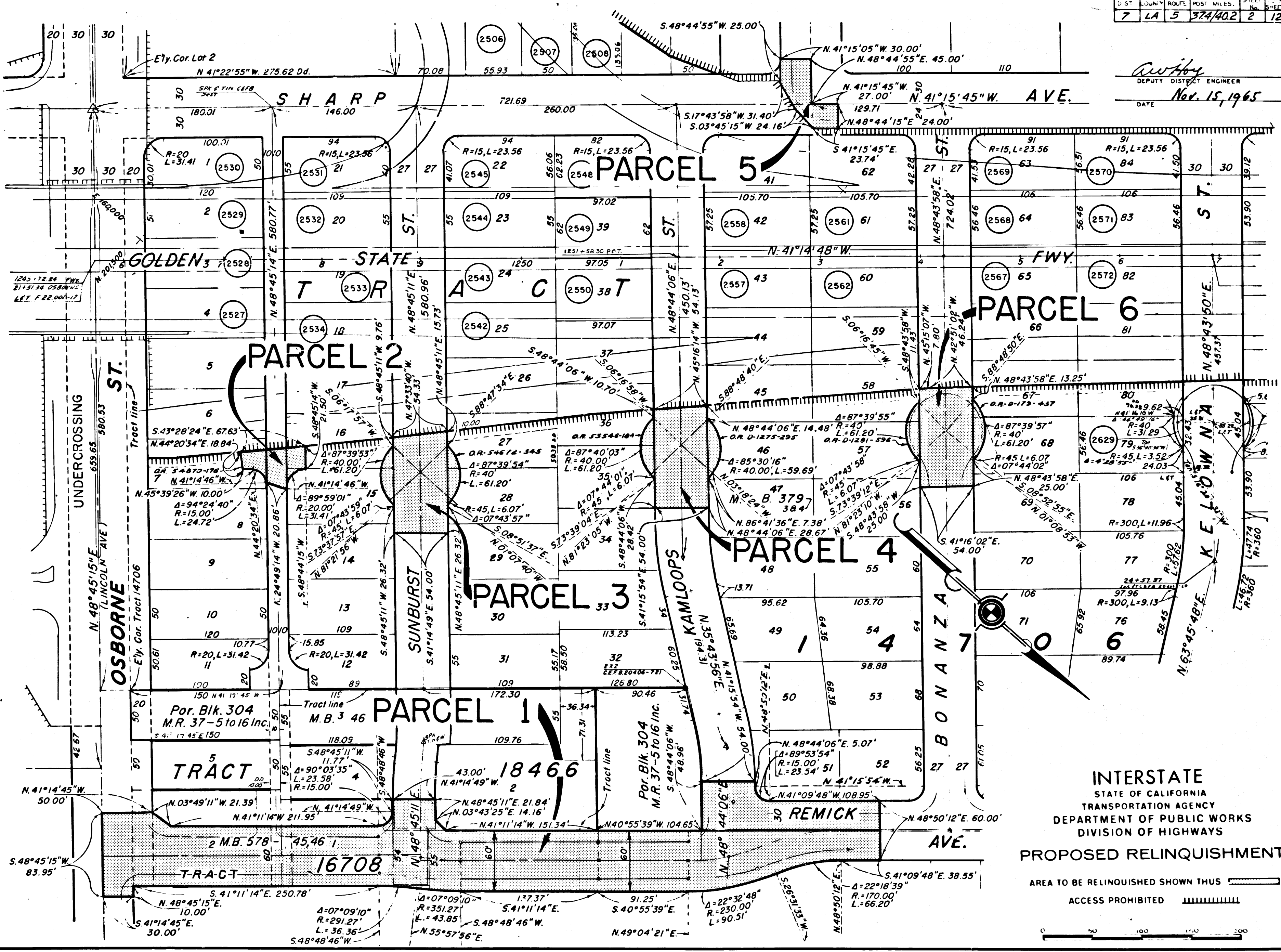
⑤ INDICATES NO. OF PARCEL TO BE RELINQUISHED.

PROPOSED RELINQUISHMENT
 INTERSTATE

U. ST.	COUNTY	ROUTE	POST MILES.	SHEET No.	TOTAL SHEETS
7	LA	5	374/402	2	12

Arvey
 DEPUTY DISTRICT ENGINEER
 DATE Nov. 15, 1965

CITY OF LOS ANGELES

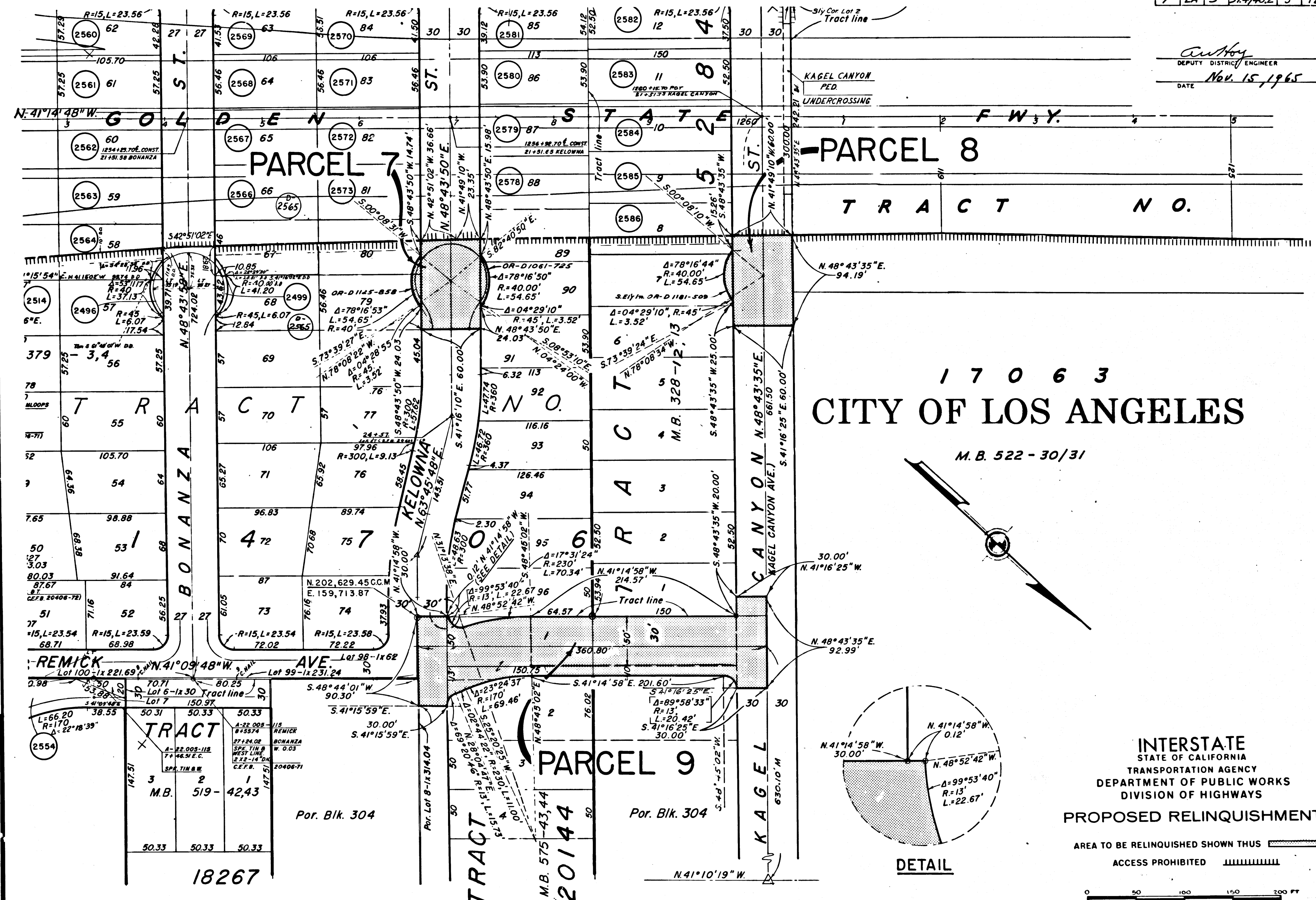


REL-414
 DWN BY W.F.S.
 C.L.C. BY J.W.H.
 CKD BY F.M.
 BASE MAP NOS. F-1228, F-1229, F-1300, F-1301, F-1302
 REF. MAP NOS. ---
 AS BUILT NOS. M-1-G

INTERSTATE
 STATE OF CALIFORNIA
 TRANSPORTATION AGENCY
 DEPARTMENT OF PUBLIC WORKS
 DIVISION OF HIGHWAYS
PROPOSED RELINQUISHMENT

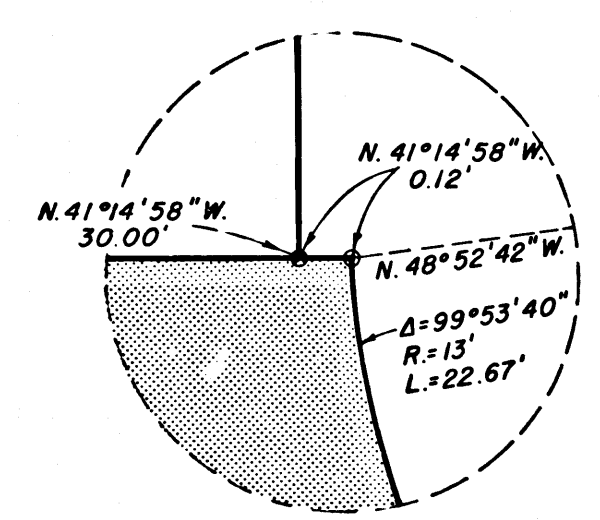
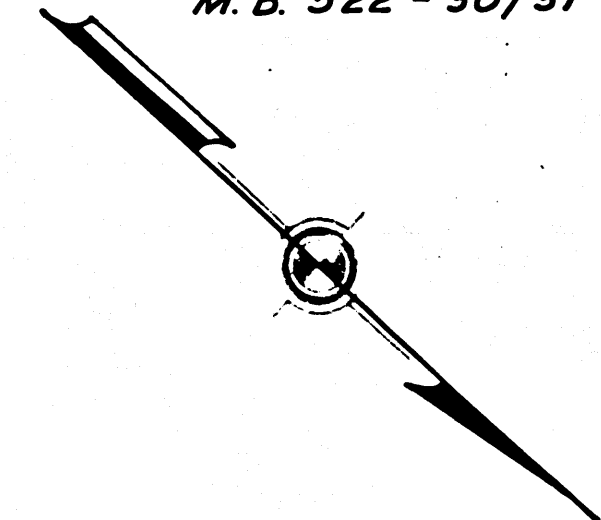
AREA TO BE RELINQUISHED SHOWN THUS ACCESS PROHIBITED

Anthony
 DEPUTY DISTRICT ENGINEER
 DATE Nov. 15, 1965



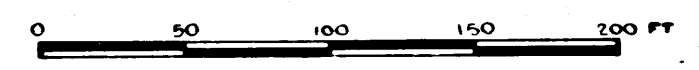
17063
CITY OF LOS ANGELES

M. B. 522 - 30/31



INTERSTATE
 STATE OF CALIFORNIA
 TRANSPORTATION AGENCY
 DEPARTMENT OF PUBLIC WORKS
 DIVISION OF HIGHWAYS
PROPOSED RELINQUISHMENT

AREA TO BE RELINQUISHED SHOWN THUS [shaded box]
 ACCESS PROHIBITED [hatched box]



REL-414
 DWN BY W.F.S.
 C'LC BY J.W.H.
 CKD BY F.M.
 BASE MAP NOS.
 F-1298, F-1299,
 F-1300, F-1301, F-1302
 REF. MAP NOS.
 AS BUILT NOS.
 H-1-C

TRACT		
3	2	1
M.B. 519-42,43		
50.33	50.33	50.33

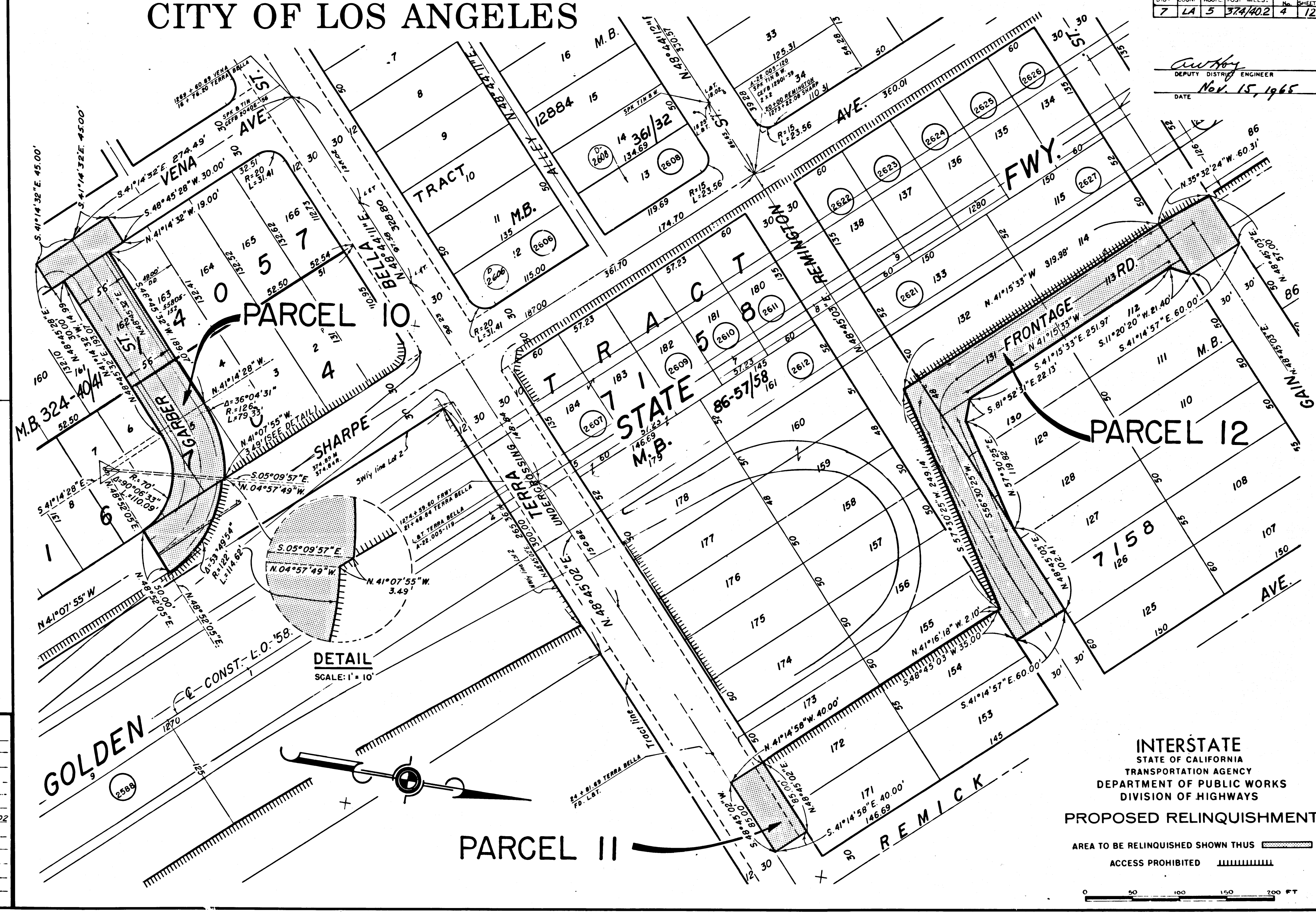
18267

CITY OF LOS ANGELES

BOOK 2 PAGE 87

DIST.	COUNTY	ROUTE	POST MILES.	SHEET NO.	TOTAL SHEETS
7	LA	5	374/40.2	4	12

Arthur
DEPUTY DISTRICT ENGINEER
DATE Nov. 15, 1965



REL-414
DRN BY W.F.S.
C.L.C. BY J.W.H.
CK'D BY F.M.
BASE MAP NO'S...
F-1298, F-1299,
F-1300, F-1301, F-1302
REF. MAP NO'S...
AS BUILT NO'S...
141-G

INTERSTATE
STATE OF CALIFORNIA
TRANSPORTATION AGENCY
DEPARTMENT OF PUBLIC WORKS
DIVISION OF HIGHWAYS
PROPOSED RELINQUISHMENT
AREA TO BE RELINQUISHED SHOWN THUS
ACCESS PROHIBITED

0 50 100 150 200 FT

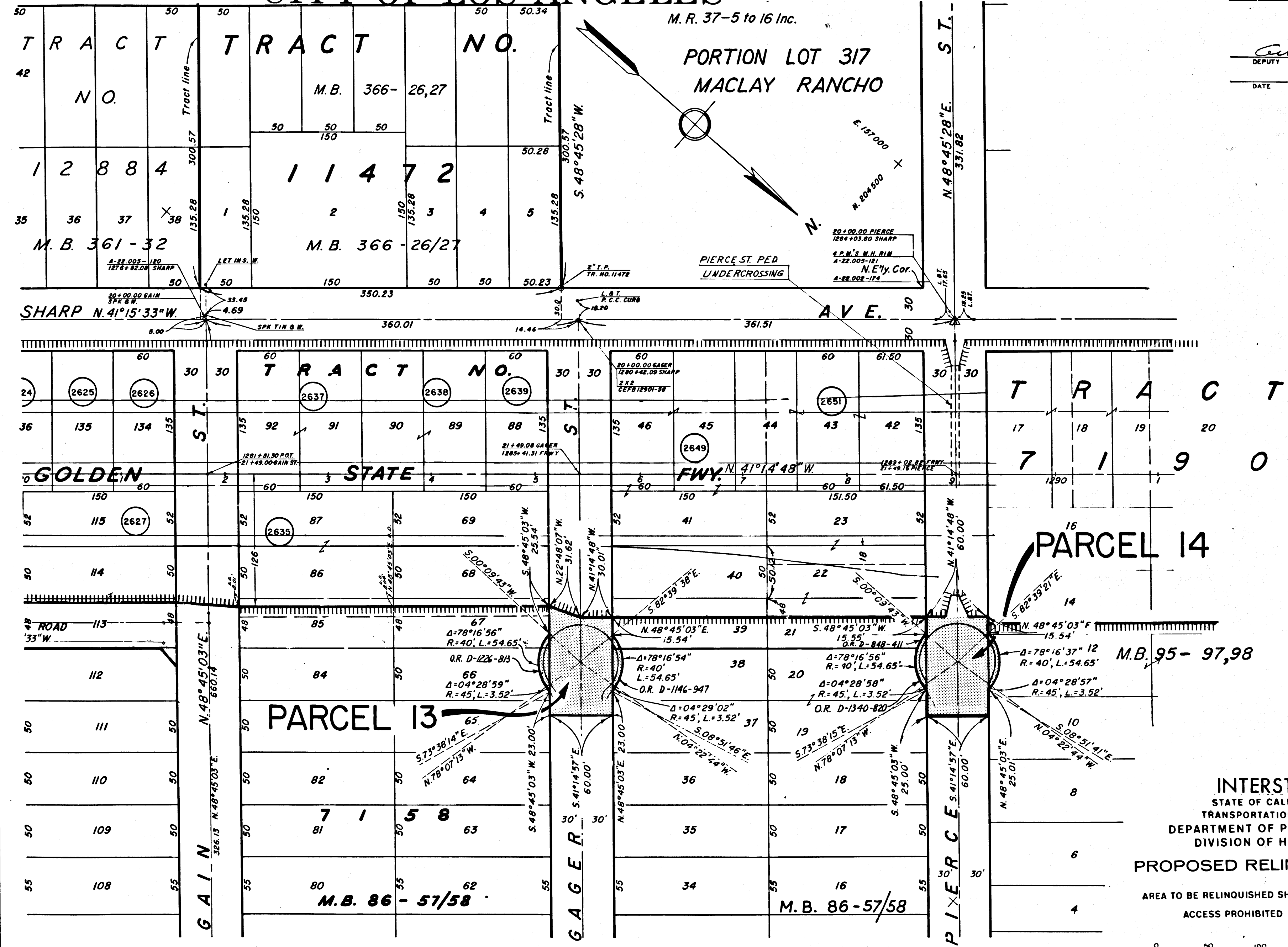
DIST.	COUNTY	ROUTE	POST MILES.	SHEET NO.	TOTAL SHEETS
7	LA	5	374/40.2	5	12

CITY OF LOS ANGELES

M. R. 37-5 to 16 Inc.

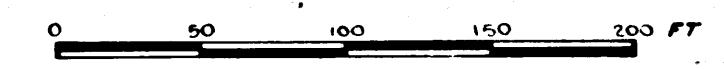
PORTION LOT 317
MACLAY RANCHO

Curphy
DEPUTY DISTRICT ENGINEER
DATE Nov. 15, 1965



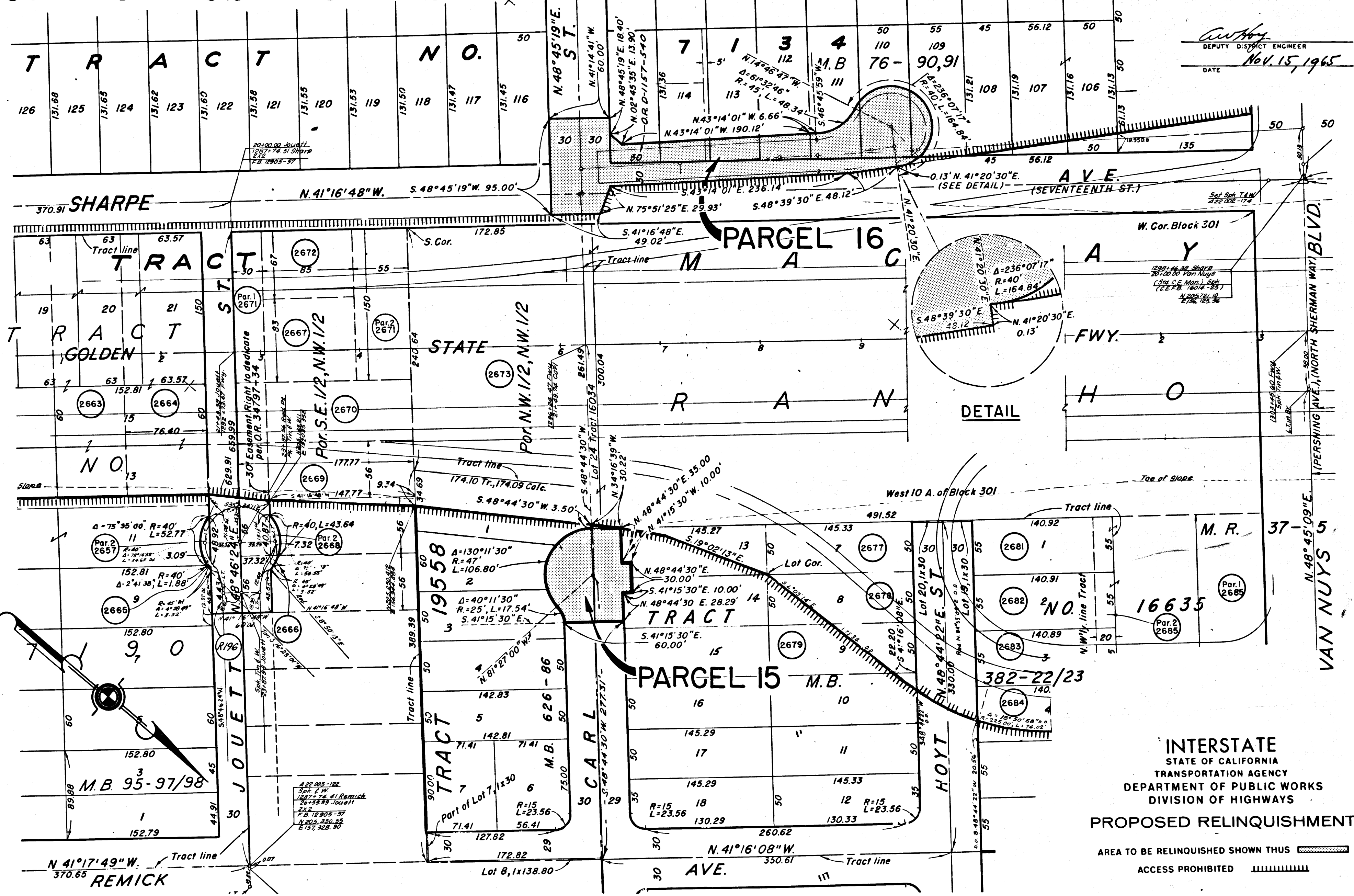
REL-414
 DRN BY W.F.S.
 C.L.C. BY J.W.H.
 CKD BY FM
 BASE MAP NOS...
F-1298, F-1299
F-1300, F-1301, F-1302
 REF. MAP NOS...
 AS BUILT NOS...
41-6

INTERSTATE
 STATE OF CALIFORNIA
 TRANSPORTATION AGENCY
 DEPARTMENT OF PUBLIC WORKS
 DIVISION OF HIGHWAYS
PROPOSED RELINQUISHMENT
 AREA TO BE RELINQUISHED SHOWN THUS
 ACCESS PROHIBITED



CITY OF LOS ANGELES

BOOK 2 PAGE 89
 DIST. COUNTY ROUTE POST MILES SHEET TOTAL
 7 LA 5 37440.2 6 12



DEPUTY DISTRICT ENGINEER
 DATE Nov. 15, 1965

REL-414
 DRN BY W.F.S.
 C'LC BY J.W.H.
 CK'D BY F.H.
 BASE MAP NO'S...
 F-1298, F-1299,
 F-1300, F-1301, F-1302
 REF. MAP NO'S...
 AS BUILT NO'S...
 141-6

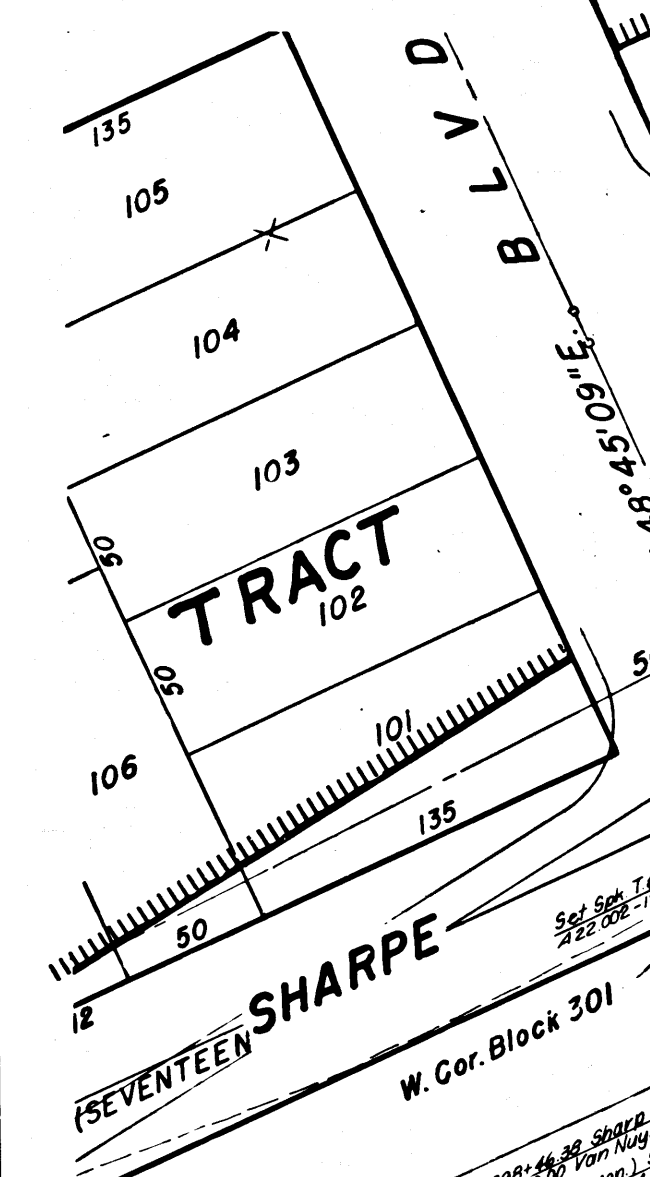
INTERSTATE
 STATE OF CALIFORNIA
 TRANSPORTATION AGENCY
 DEPARTMENT OF PUBLIC WORKS
 DIVISION OF HIGHWAYS
PROPOSED RELINQUISHMENT
 AREA TO BE RELINQUISHED SHOWN THUS [shaded box]
 ACCESS PROHIBITED [hatched box]

0 50 100 150 200 FT

DIST	COUNTY	ROUTE	POST MILES	SHEET No.	TOTAL SHEETS
7	LA	5	374/40.2	7	12

CITY OF LOS ANGELES

Anthony
 DEPUTY DISTRICT ENGINEER
 DATE NOV. 15, 1965



TRACT GOLDEN MACLAY

M.B. 7134
 12 76 90/91

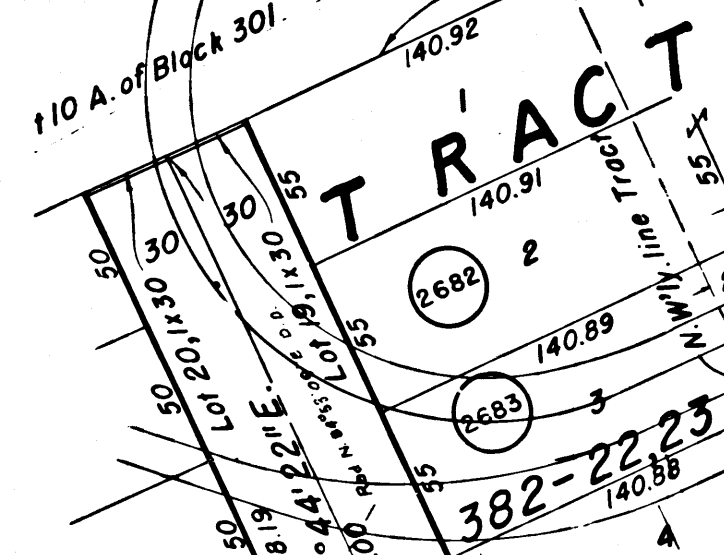
STATE

PARCEL 18

RANCHO MACLAY

PARCEL 17

22038



M. R. 16635

M.B. 382-22/23

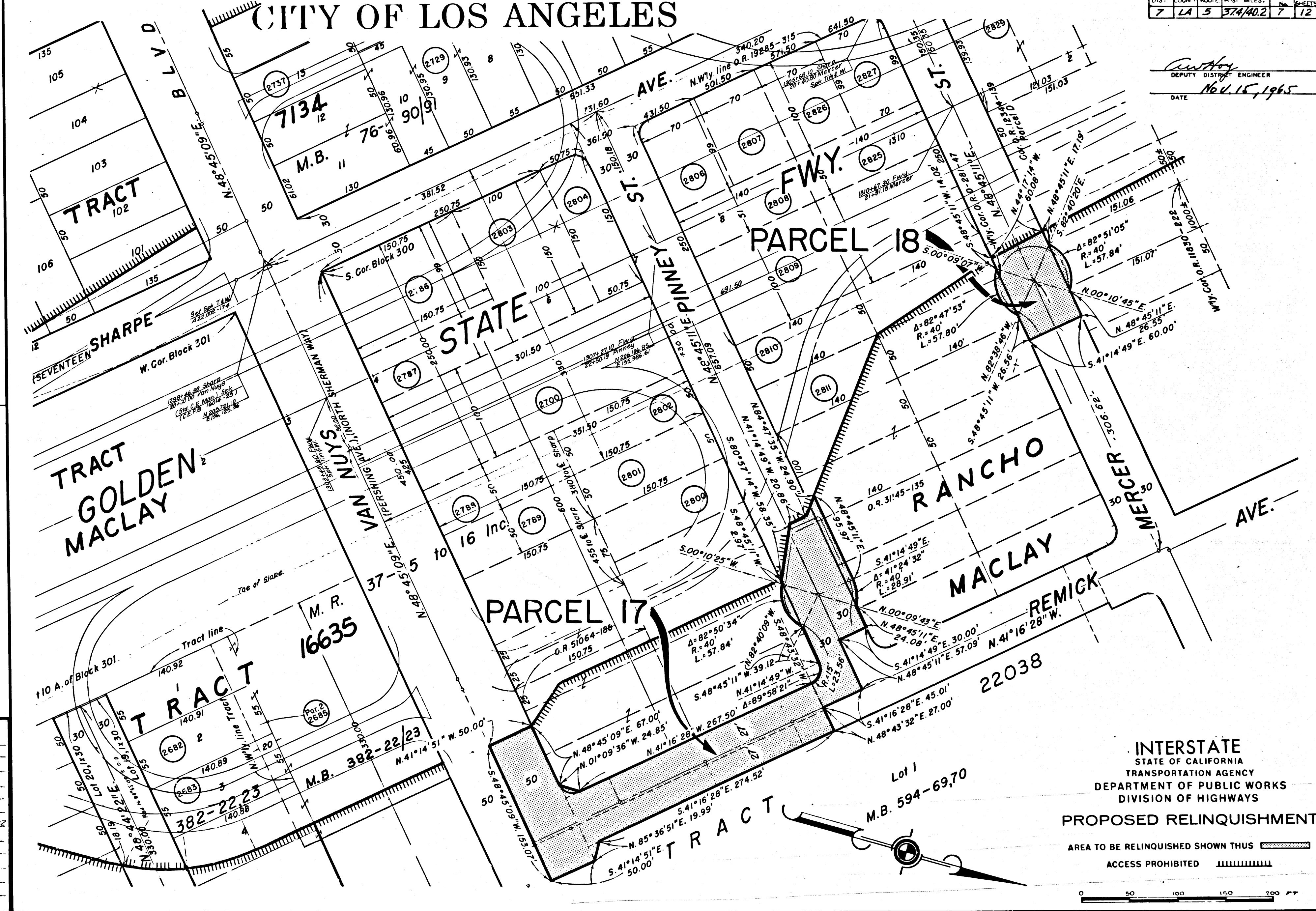
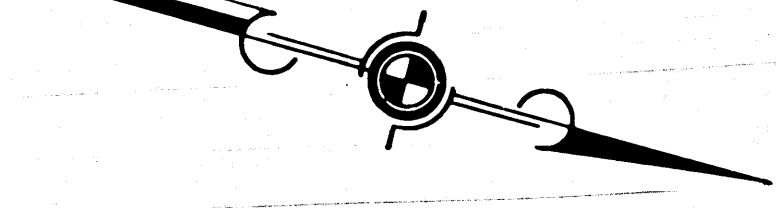
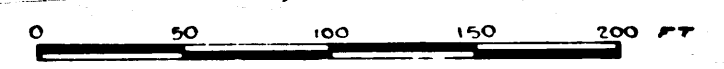
Lot 1
 M.B. 594-6970

REL-414
 DRN BY W.F.S.
 CLC BY J.W.H.
 CKD BY F.M.
 BASE MAP NO'S
 F-1298, F-1299,
 F-1300, F-1301, F-1302
 REF. MAP NO'S
 AS BUILT NO'S
 141-G

INTERSTATE
 STATE OF CALIFORNIA
 TRANSPORTATION AGENCY
 DEPARTMENT OF PUBLIC WORKS
 DIVISION OF HIGHWAYS
PROPOSED RELINQUISHMENT

AREA TO BE RELINQUISHED SHOWN THUS

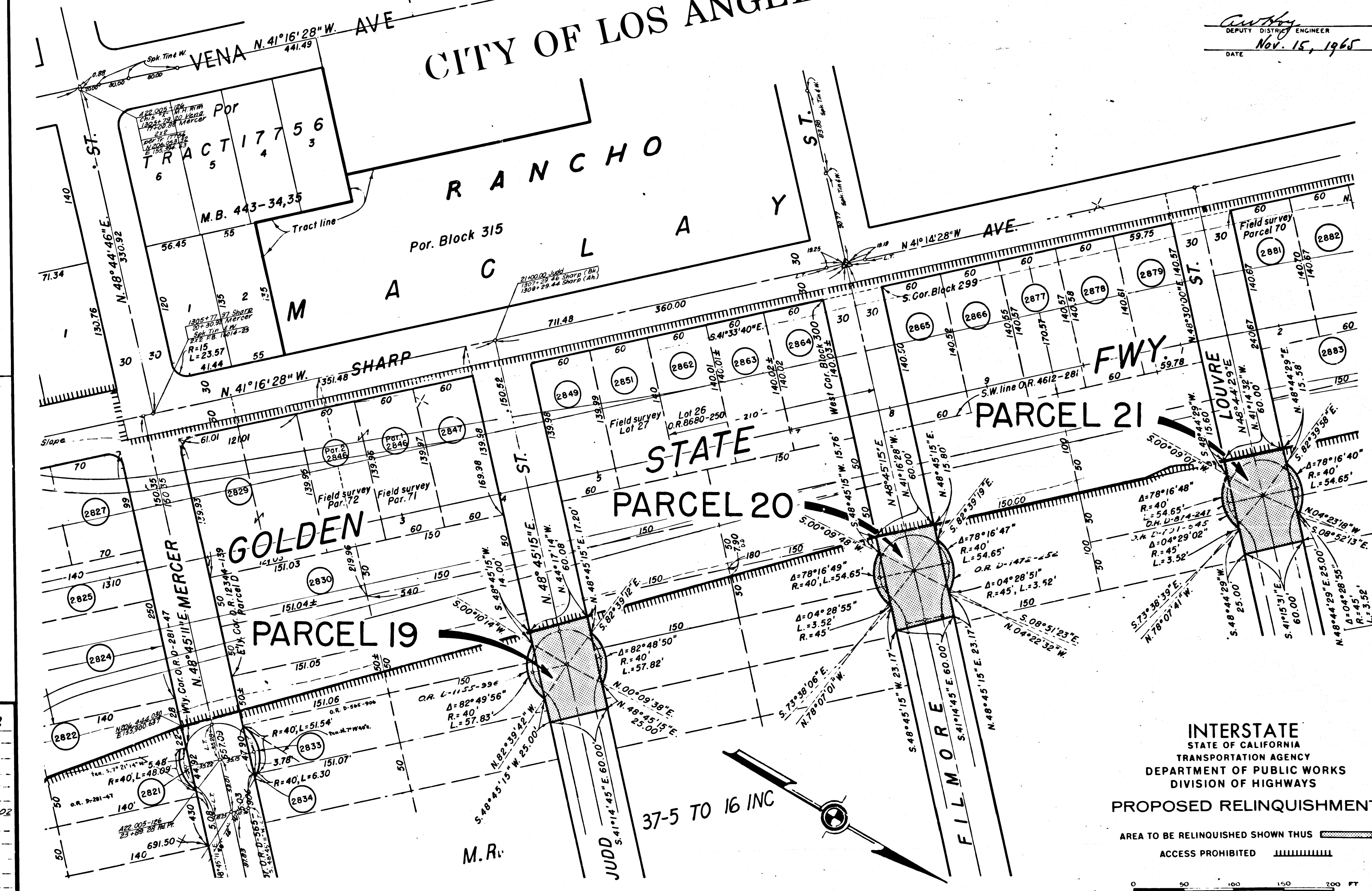
ACCESS PROHIBITED



DIST	COUNTY	ROUTE	POST MILES	SHEET No.	TOTAL SHEETS
7	LA	5	374/40.2	8	12

DEPUTY DISTRICT ENGINEER
 DATE Nov. 15, 1965

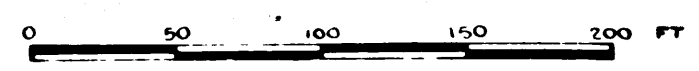
CITY OF LOS ANGELES



REL-414
 DRN BY W.F.S.
 C.L.C BY J.W.H.
 CK'D BY F.M.
 BASE MAP NO'S
 F-1298, F-1299,
 F-1300, F-1301, F-1302
 REF. MAP NO'S
 AS BUILT NO'S
 141-6

INTERSTATE
 STATE OF CALIFORNIA
 TRANSPORTATION AGENCY
 DEPARTMENT OF PUBLIC WORKS
 DIVISION OF HIGHWAYS
PROPOSED RELINQUISHMENT

AREA TO BE RELINQUISHED SHOWN THUS [Hatched Pattern]
 ACCESS PROHIBITED [Wavy Line Pattern]



37-5 TO 16 INC

DIST	COUNTY	ROUTE	POST MILES.	SHEET No.	TOTAL SHEETS
7	LA	5	374/40.2	9	12

Portion Block 313
M.R. 37-5 to 16 Inc.

W. H. H. H.
DEPUTY DISTRICT ENGINEER
DATE Nov. 15, 1965

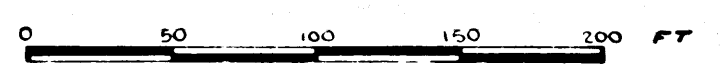


REL-414
DRN BY W.F.S.
C.L.C. BY J.W.H.
CK'D BY F.M.
BASE MAP NO'S...
F-1298, F-1299
F-1300, F-1301, F-1302
REF. MAP NO'S...
AS BUILT NO'S...
141-6

CITY OF LOS ANGELES

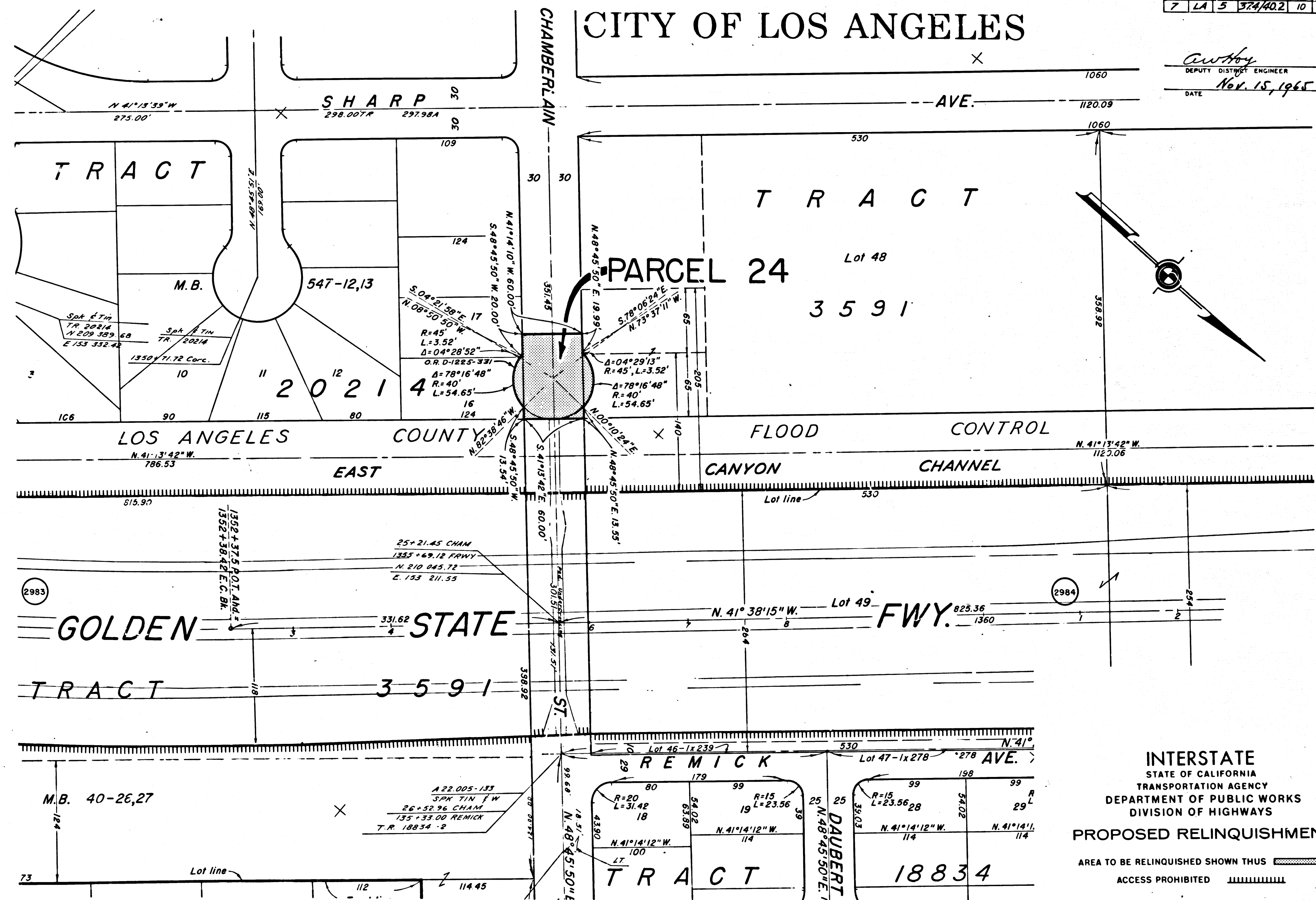
INTERSTATE
STATE OF CALIFORNIA
TRANSPORTATION AGENCY
DEPARTMENT OF PUBLIC WORKS
DIVISION OF HIGHWAYS
PROPOSED RELINQUISHMENT

AREA TO BE RELINQUISHED SHOWN THUS [Hatched Box]
ACCESS PROHIBITED [Wavy Line]



CITY OF LOS ANGELES

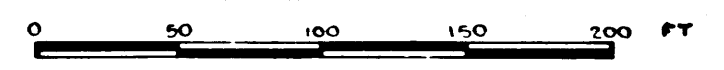
Cawley
 DEPUTY DISTRICT ENGINEER
 DATE Nov. 15, 1965



REL-414
 DRN BY W.F.S.
 C.L.C. BY J.W.H.
 CKD BY FM
 BASE MAP NOS...
 F-1298, F-1299
 F-1300, F-1301, F-1302
 REF. MAP NOS...
 AS BUILT NO'S...
 141-G

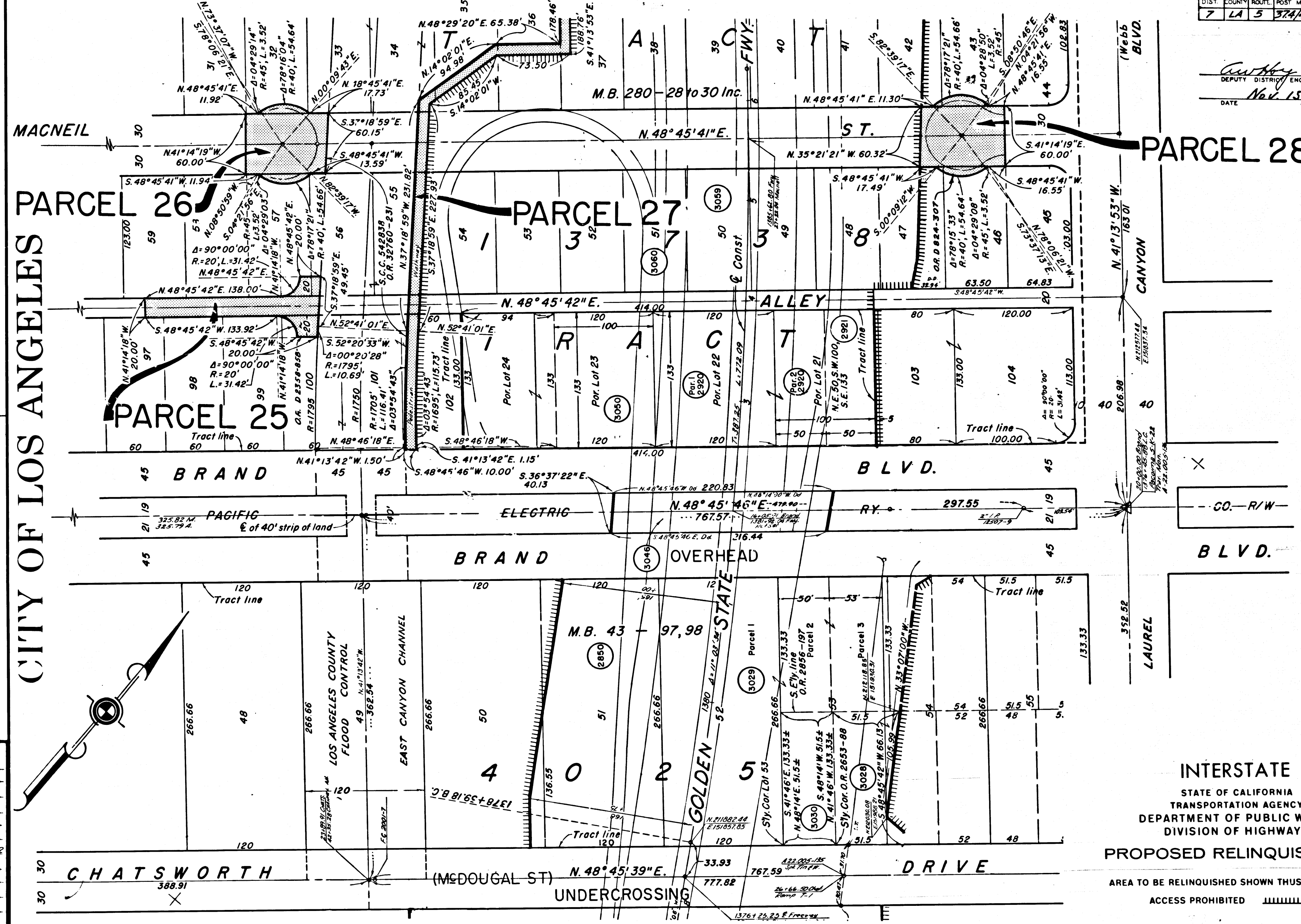
INTERSTATE
 STATE OF CALIFORNIA
 TRANSPORTATION AGENCY
 DEPARTMENT OF PUBLIC WORKS
 DIVISION OF HIGHWAYS
PROPOSED RELINQUISHMENT

AREA TO BE RELINQUISHED SHOWN THUS [Hatched Box]
 ACCESS PROHIBITED [Vertical Lines]



DIST.	COUNTY	ROUTE	POST MILES.	SHEET No.	TOTAL SHEETS
7	LA	5	374.40.2	11	12

Anthony
 DEPUTY DISTRICT ENGINEER
 DATE Nov 15, 1965



PARCEL 28

PARCEL 26

PARCEL 27

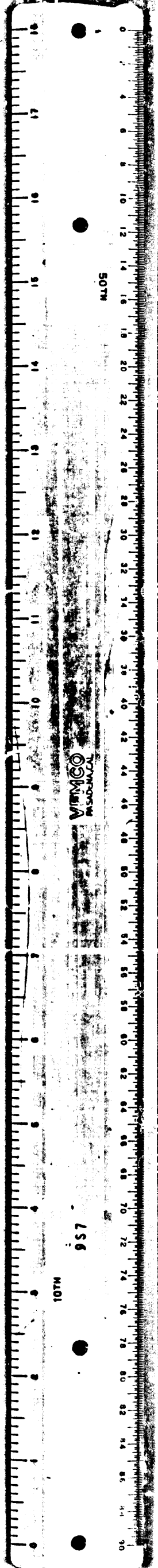
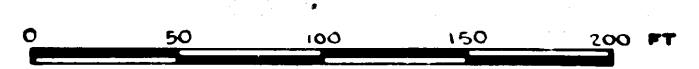
PARCEL 25

CITY OF LOS ANGELES

REL-414
 DRN BY W.F.S.
 C/LC BY J.W.H.
 CKD BY F.M.
 BASE MAP NOS...
 F-1298, E-1299,
 F-1300, E-1301, F-1302
 REF. MAP NOS...
 AS BUILT NOS...
 M-1-G

INTERSTATE
 STATE OF CALIFORNIA
 TRANSPORTATION AGENCY
 DEPARTMENT OF PUBLIC WORKS
 DIVISION OF HIGHWAYS
 PROPOSED RELINQUISHMENT

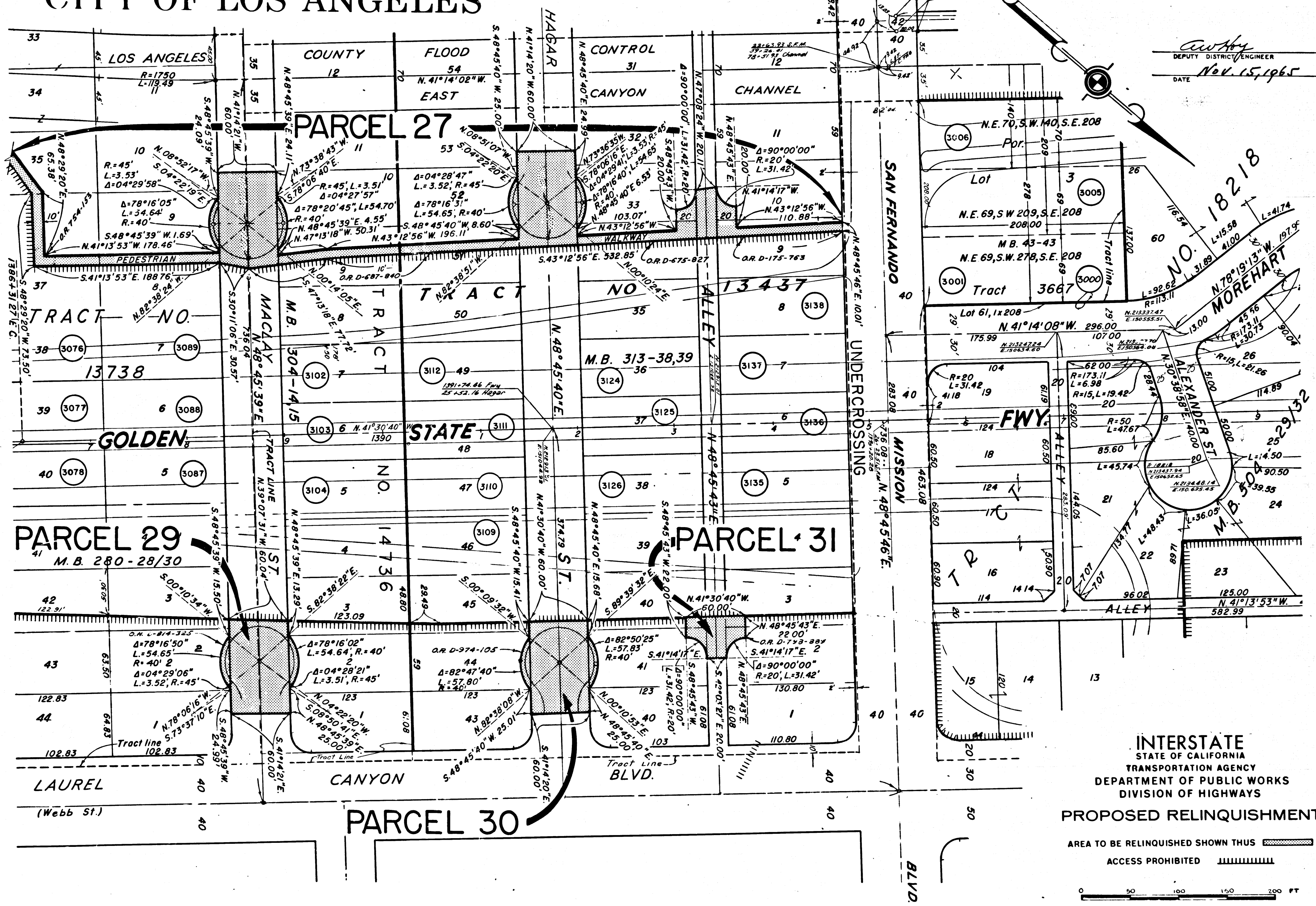
AREA TO BE RELINQUISHED SHOWN THUS [hatched box]
 ACCESS PROHIBITED [dashed line]



CITY OF LOS ANGELES

BOOK 2 PAGE 95	
DIST. COUNTY ROUTE	POST MILES. SHEET TOTAL SHEETS
7 LA 5 374/40.2	12 12

awh
DEPUTY DISTRICT ENGINEER
DATE Nov. 15, 1965



REL-414
DRN BY W.F.S.
C/LC BY J.W.H.
CKD BY FM
BASE MAP NO'S
F-1298, F-1299,
F-1300, F-1301, F-1302
REF. MAP NO'S
AS BUILT NO'S
141-6

INTERSTATE
STATE OF CALIFORNIA
TRANSPORTATION AGENCY
DEPARTMENT OF PUBLIC WORKS
DIVISION OF HIGHWAYS
PROPOSED RELINQUISHMENT
AREA TO BE RELINQUISHED SHOWN THUS [Hatched Box]
ACCESS PROHIBITED [Dashed Line]

0 50 100 150 200 FT