

DIST	COUNTY	ROUTE	POST MILES	SHEET NO.	TOTAL SHEETS
7	LA	7	0.9	1	1

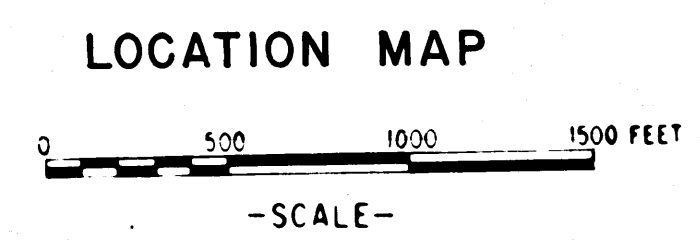
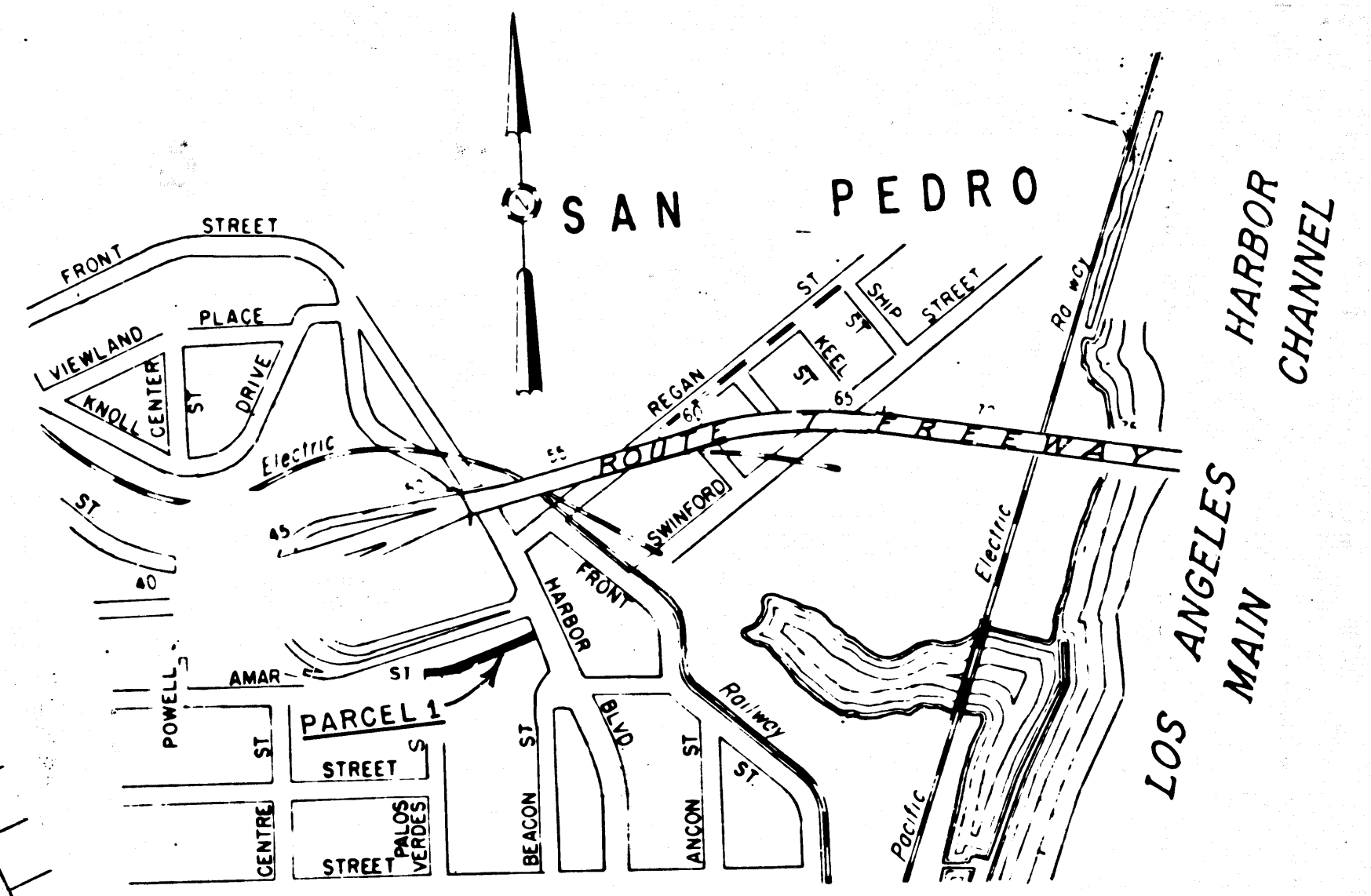
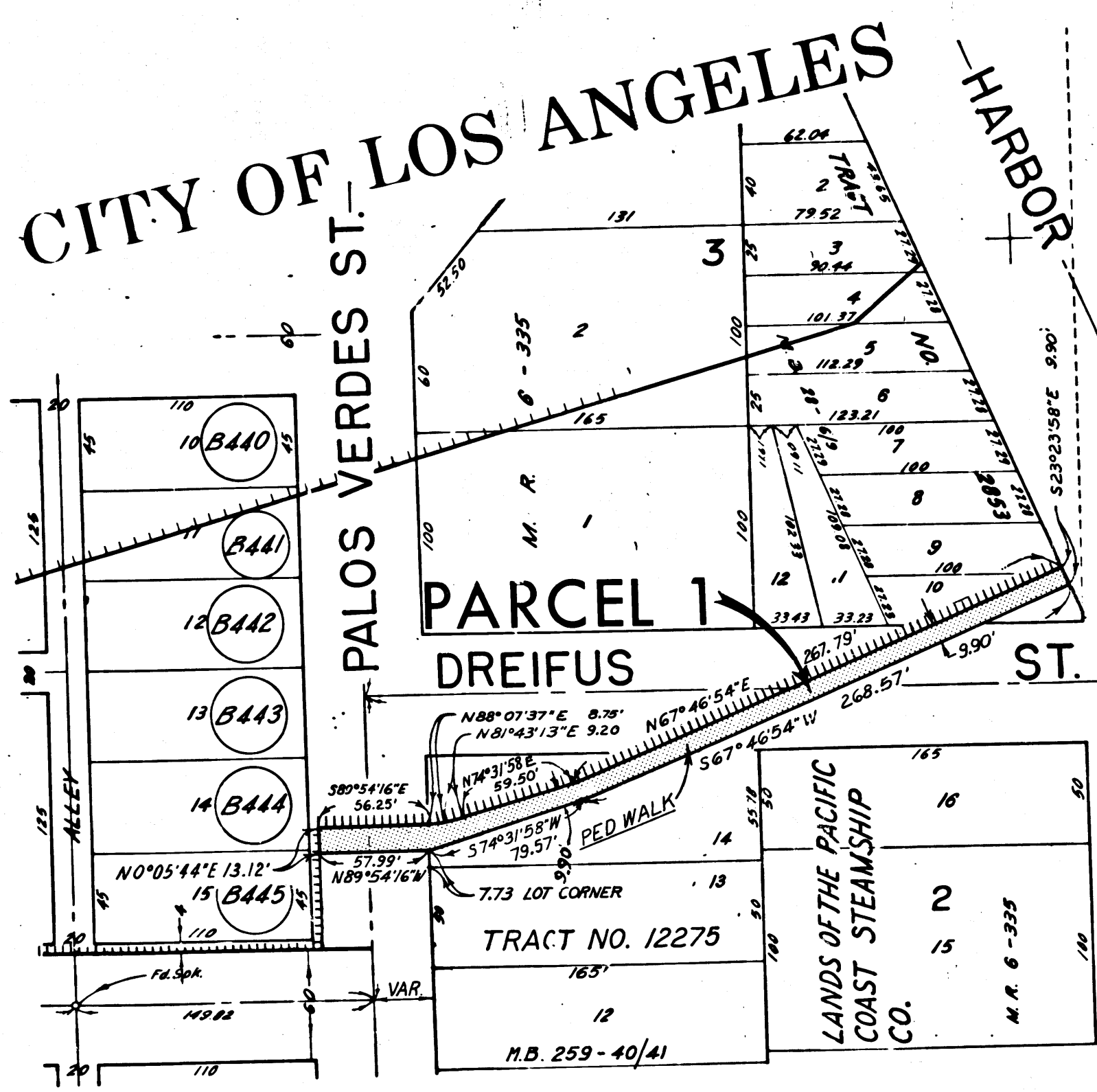
Anthony
 DEPUTY DISTRICT ENGINEER
 DATE *Nov. 15, 1965*

RECORDED
 AT REQUEST OF
 DEPT. OF PUBLIC WORKS
 NOV. 19, 1965
 15 PAST 9 A.M.
 BOOK 2
 PAGE 99
 OF STATE HIGHWAY MAPS
 LOS ANGELES COUNTY, CALIF.
 RAY E. LEE
 COUNTY RECORDER
 FREE

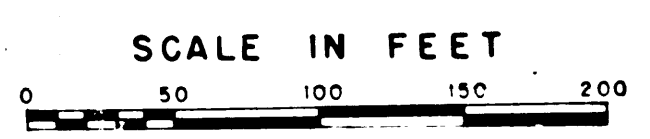
STATE OF CALIFORNIA
 TRANSPORTATION AGENCY
 DEPARTMENT OF PUBLIC WORKS
 DIVISION OF HIGHWAYS

RIGHT OF WAY MAP OF
STATE HIGHWAY

In Los Angeles County on the San Pedro-Terminal Island Bridge Approaches
 between Pacific Avenue in San Pedro and 0.3 mile east of Mormon Street on Terminal Island



REL-464
 DRN BY B.J.R.
 CLC BY T.K.
 CK'D BY F.M.
 BASE MAP NO'S
 F 2105
 REF. MAP NO'S
 CCM 288.01
 AS BUILT NO'S
 146-16



PROPOSED RELINQUISHMENT