

BOOK 2 PAGE 100

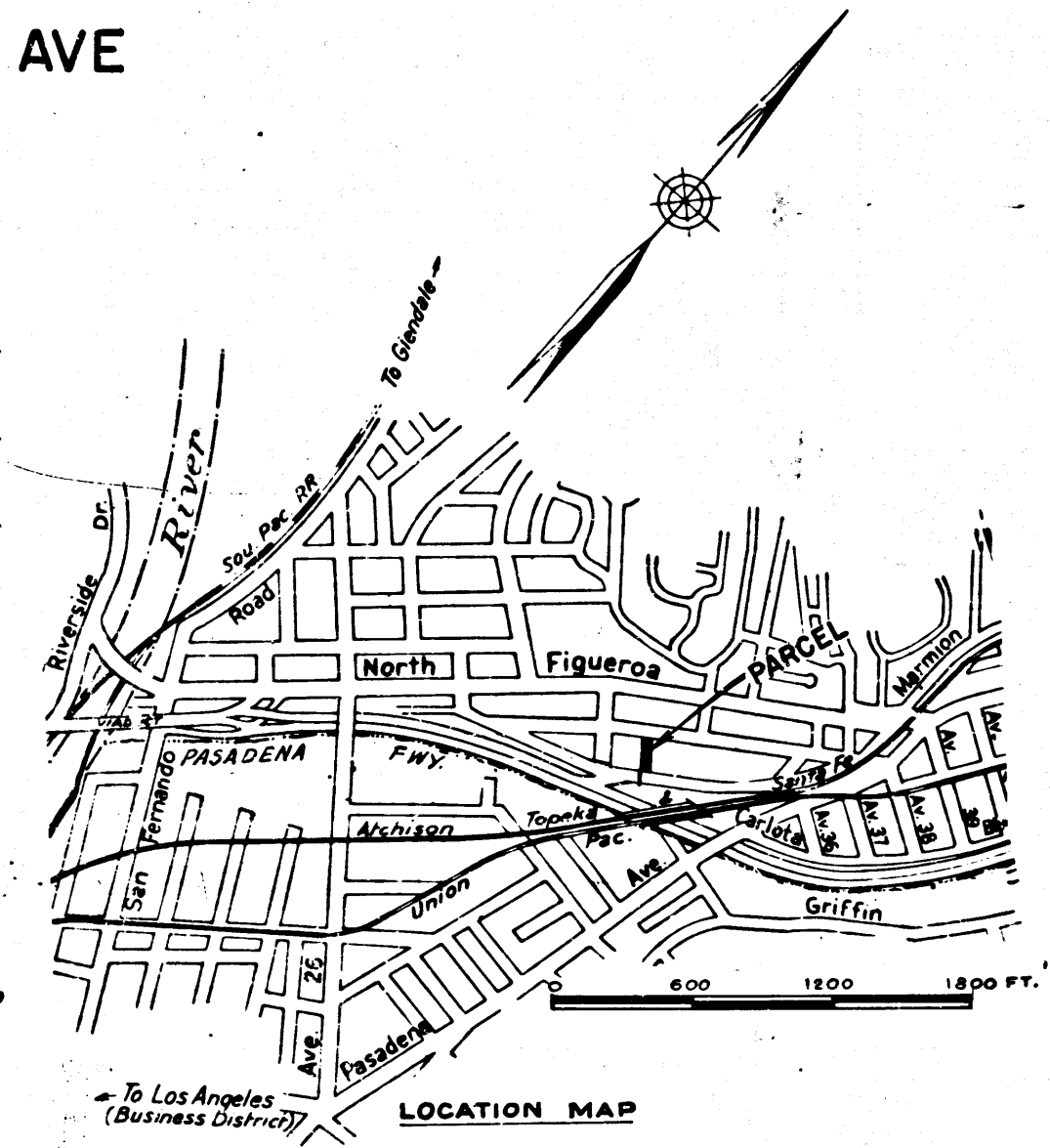
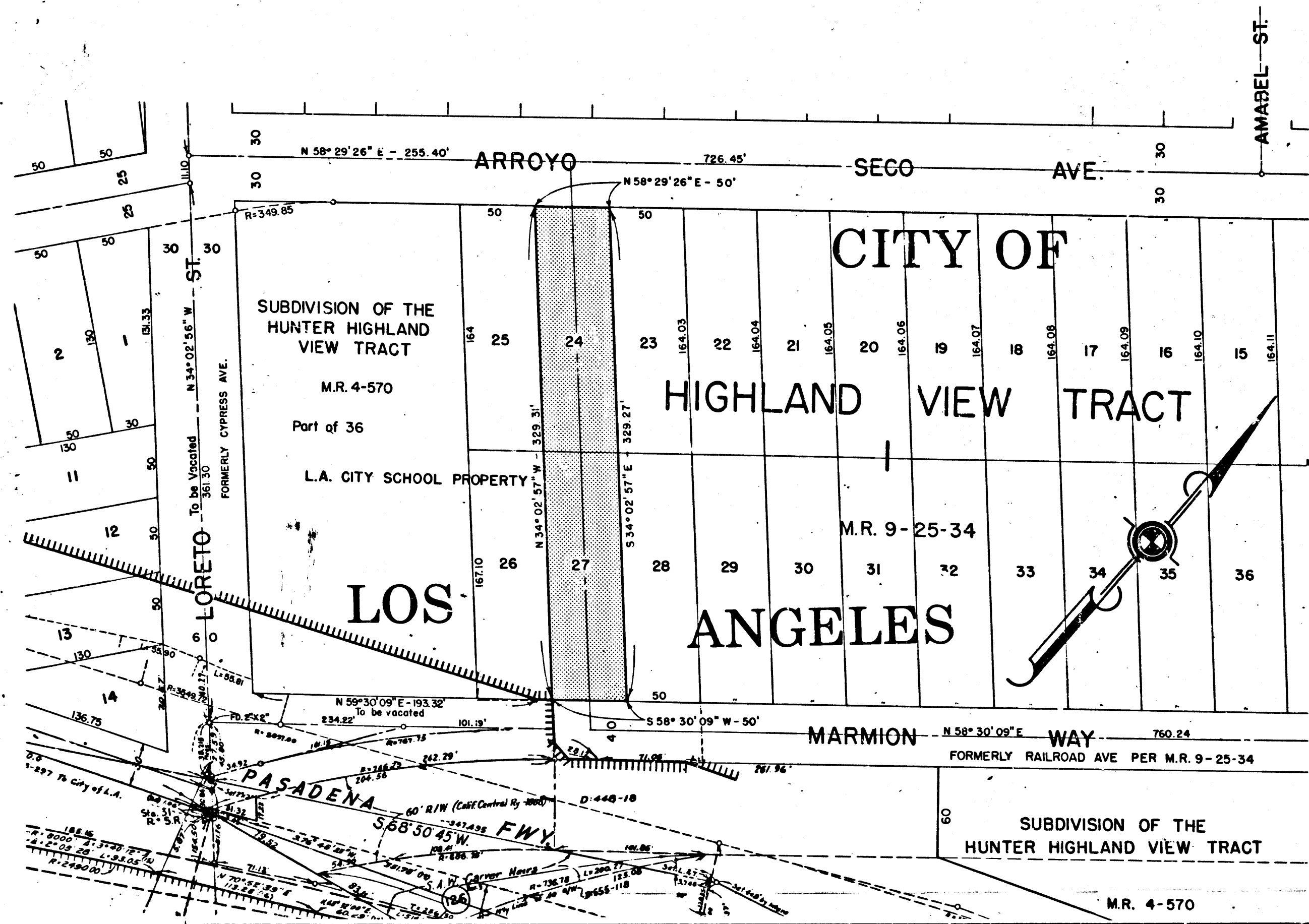
DIST	COUNTY	ROUTE	POST MILES	SHEET NO.	TOTAL SHEETS
7	LA	11	26.2	1	1

STATE OF CALIFORNIA
 TRANSPORTATION AGENCY
 DEPARTMENT OF PUBLIC WORKS
 DIVISION OF HIGHWAYS
 RIGHT OF WAY MAP OF
STATE HIGHWAY

Anthony
 DEPUTY DISTRICT ENGINEER
 DATE *Jan. 7, 1966*

3150
 RECORDED
 AT REQUEST OF
 DEPT. OF PUBLIC WORKS
 JAN. 14, 1966
 10 P.M. 9 A.M.
 BOOK 2
 PAGE 100
 OF STATE HIGHWAY MAPS
 LOS ANGELES COUNTY, CALIF.
 RAY E. LEE
 COUNTY RECORDER
Ray
 Deputy

IN LOS ANGELES COUNTY BETWEEN AVE 26 & PASADENA AVE



REL- 495
 DRN BY *M.D.*
 C/LC BY *M.D.*
 CKD BY *J.D.*
 BASE MAP NO'S
 -1765
 REF. MAP NO'S
 C.C.M. 22-39 A
 AS BUILT NO'S
 155-1

STATE OF CALIFORNIA
 TRANSPORTATION AGENCY
 DEPARTMENT OF PUBLIC WORKS
 DIVISION OF HIGHWAYS
PROPOSED RELINQUISHMENT
 AREA TO BE RELINQUISHED SHOWN 'HUS'
 ACCESS PROHIBITED