

|        |        |        |             |           |              |
|--------|--------|--------|-------------|-----------|--------------|
| BOOK 3 |        | PAGE 1 |             |           |              |
| DIST   | COUNTY | ROUTE  | POST MILES. | SHEET No. | TOTAL SHEETS |
| 7      | LA.    | 60     | 0.5-2.6     | 1         | 11           |

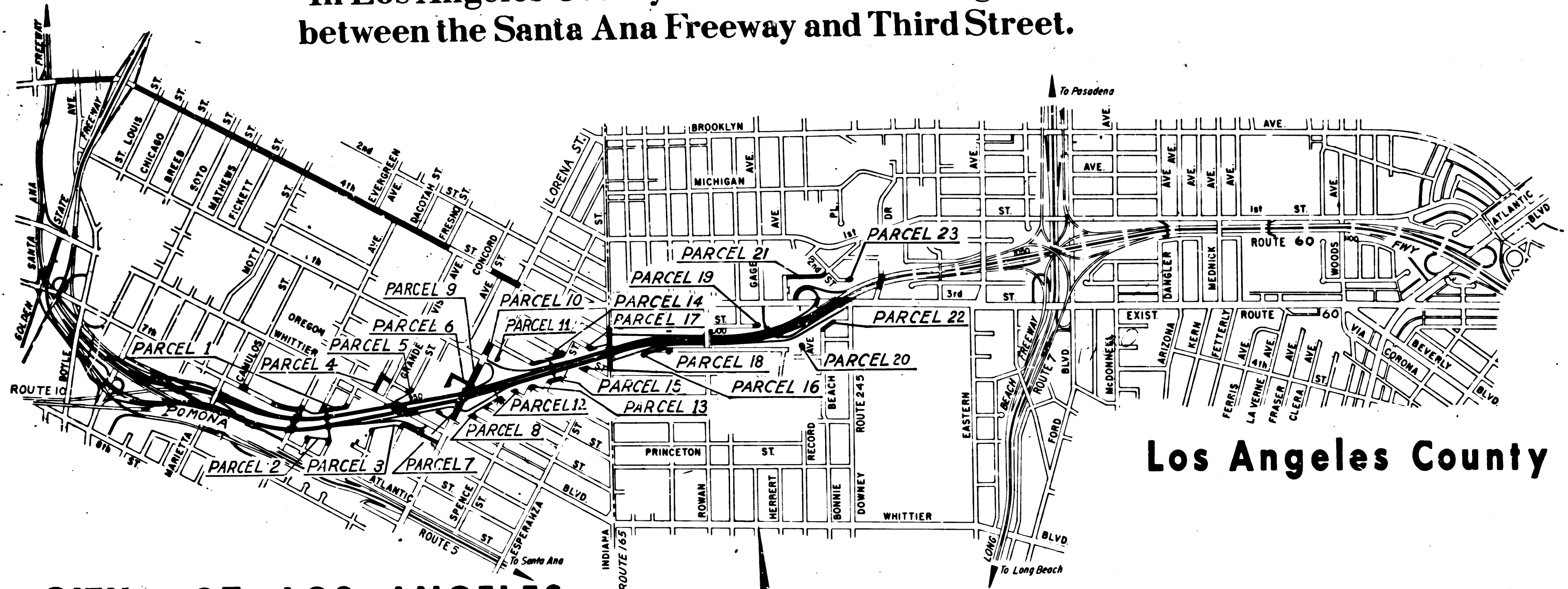
STATE OF CALIFORNIA  
 TRANSPORTATION AGENCY  
 DEPARTMENT OF PUBLIC WORKS  
 DIVISION OF HIGHWAYS

*C. W. Hoy*  
 DEPUTY DISTRICT ENGINEER  
 Nov. 30, 1965  
 DATE

RIGHT OF WAY MAPS OF  
**STATE HIGHWAY**

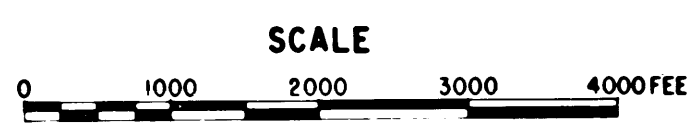
2616  
 RECORDED  
 AT REQUEST OF  
 DEPT. OF PUBLIC WORKS  
 DEC. 8, 1965  
 1 PAST 9AM.  
 3  
 OF STATE HIGHWAY MAPS  
 LOS ANGELES COUNTY, CALIF.  
 RAY E. LEE  
 COUNTY RECORDER  
 FREE

In Los Angeles County in and near Los Angeles,  
 between the Santa Ana Freeway and Third Street.



Los Angeles County

CITY OF LOS ANGELES



PROPOSED RELINQUISHMENT

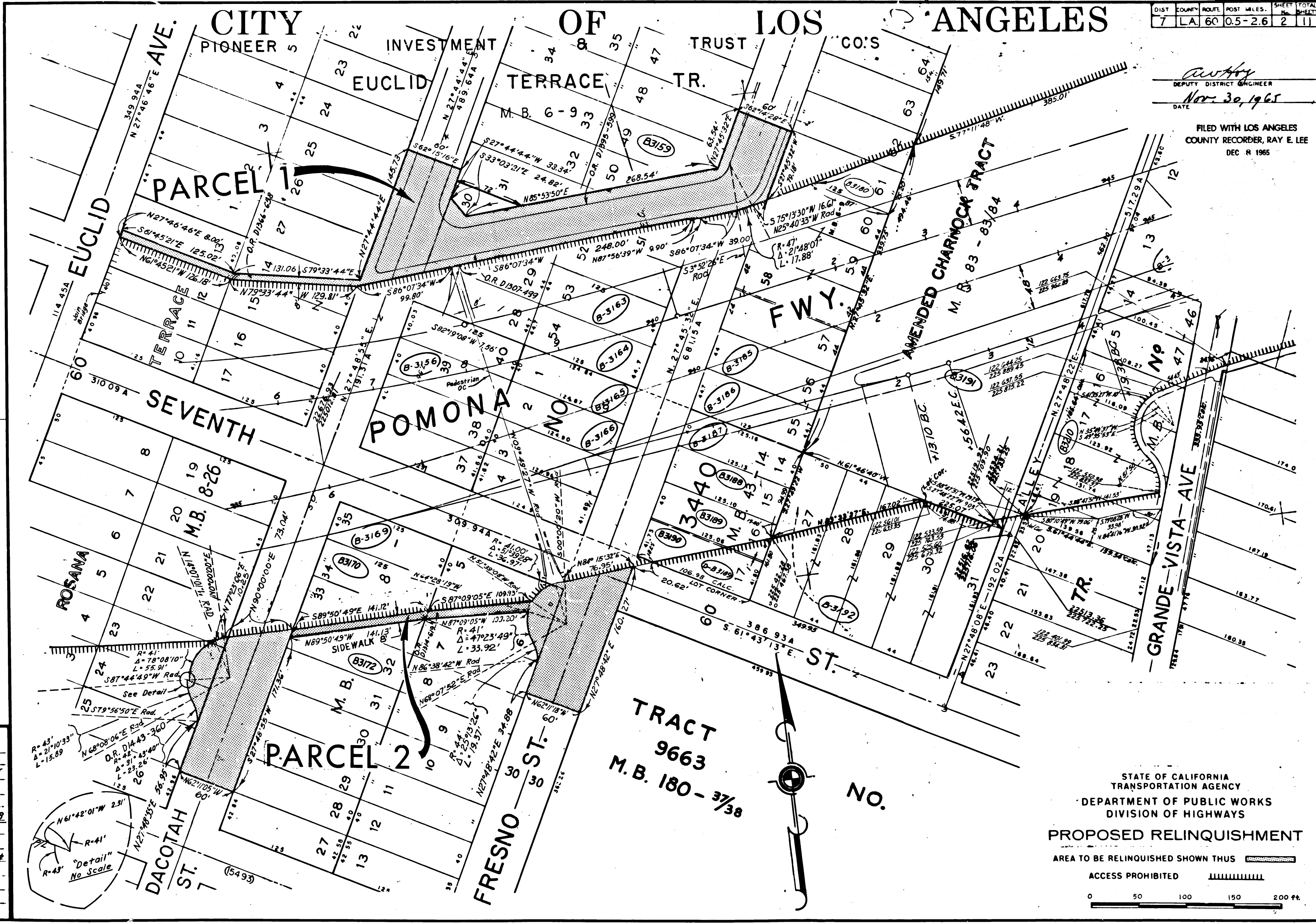
363  
 REL-445  
 DRYN BY *J.F.F.*  
 C'LC BY J.F.F.  
 CK'D BY M.M.  
 BASE MAP NOS.  
 F-1777-F1778  
 F-1779 & F-1780  
 REF. MAP NOS.  
 CCM 214.1, 215.7 &  
 220.8  
 AS BUILT NOS.  
 155-14

| DIST | COUNTY | ROUTE | POST MILES | SHEET TOTAL |
|------|--------|-------|------------|-------------|
| 7    | LA     | 60    | 0.5-2.6    | 2 11        |



# CITY OF LOS ANGELES

*Ray E. Lee*  
 DEPUTY DISTRICT ENGINEER  
 DATE Nov. 30, 1965

FILED WITH LOS ANGELES  
 COUNTY RECORDER, RAY E. LEE  
 DEC 8 1965

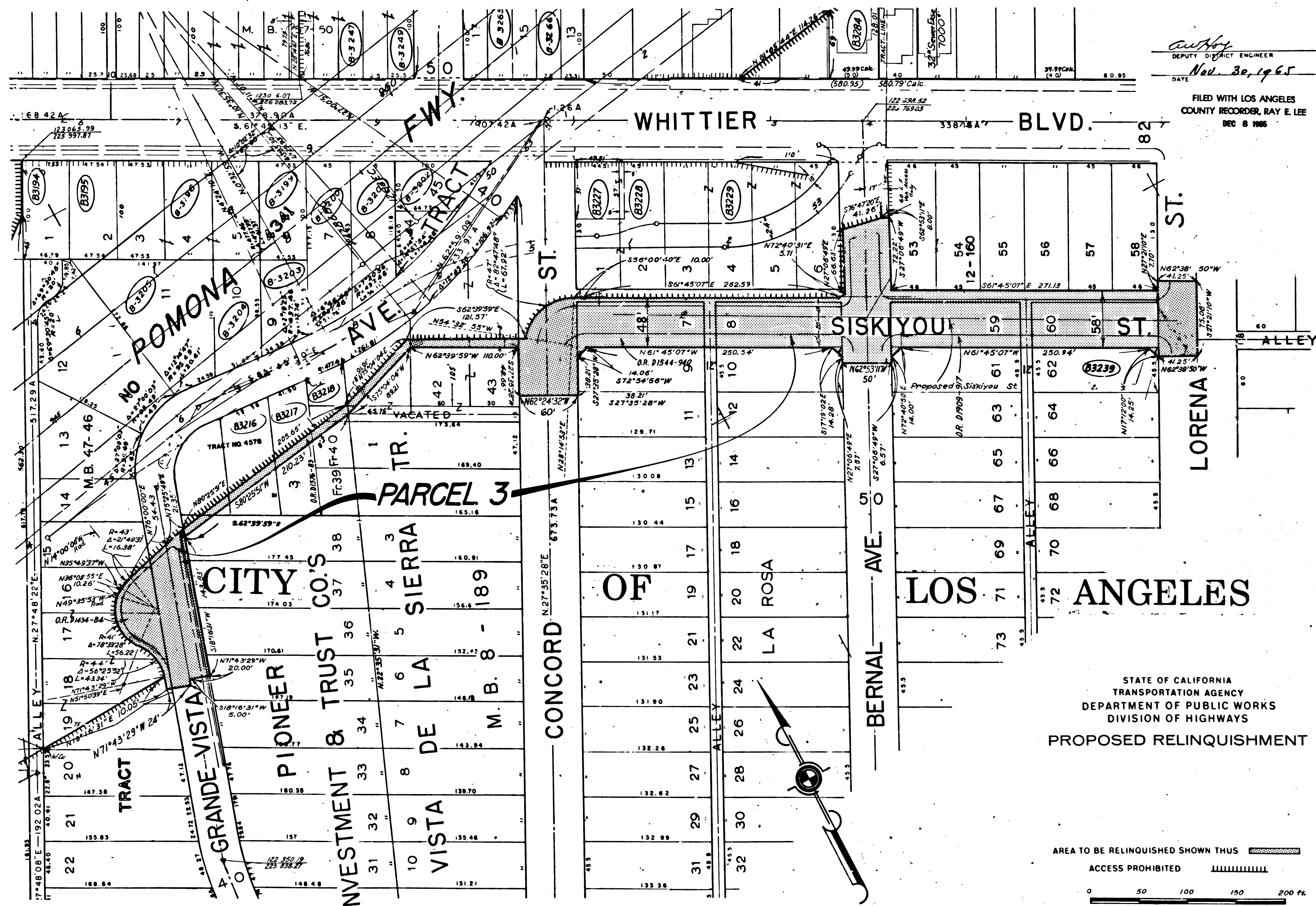


**363**  
**REL-445**  
 DWN BY *J.F.F.*  
 C'LC BY *J.F.F.*  
 CKD BY *M.M.*  
 BASE MAP NOS.  
 F-1772-E1778  
 F-1779 & 1780  
 REF. MAP NOS.  
 CCM 214, 215, 7#  
 220.8  
 AS BUILT NOS.  
 155-14

STATE OF CALIFORNIA  
 TRANSPORTATION AGENCY  
 DEPARTMENT OF PUBLIC WORKS  
 DIVISION OF HIGHWAYS  
**PROPOSED RELINQUISHMENT**  
 AREA TO BE RELINQUISHED SHOWN THUS   
 ACCESS PROHIBITED   
 0 50 100 150 200 FT.

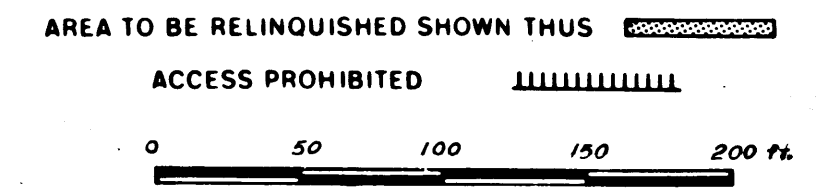
*Authy*  
 DEPUTY DISTRICT ENGINEER  
 DATE *Nov. 30, 1965*

FILED WITH LOS ANGELES  
 COUNTY RECORDER, RAY E. LEE  
 DEC 8 1965



363  
**REL-445**  
 DRN BY J.F.F.  
 C.L.C. BY J.F.F.  
 CKD BY M.M.  
 BASE MAP NO'S  
 F-1777-F1778  
 F-1779 & F-1780  
 REF. MAP NO'S  
 CCM 214.1, 215.7 &  
 220.8  
 AS BUILT NO'S  
 155-14.

STATE OF CALIFORNIA  
 TRANSPORTATION AGENCY  
 DEPARTMENT OF PUBLIC WORKS  
 DIVISION OF HIGHWAYS  
**PROPOSED RELINQUISHMENT**

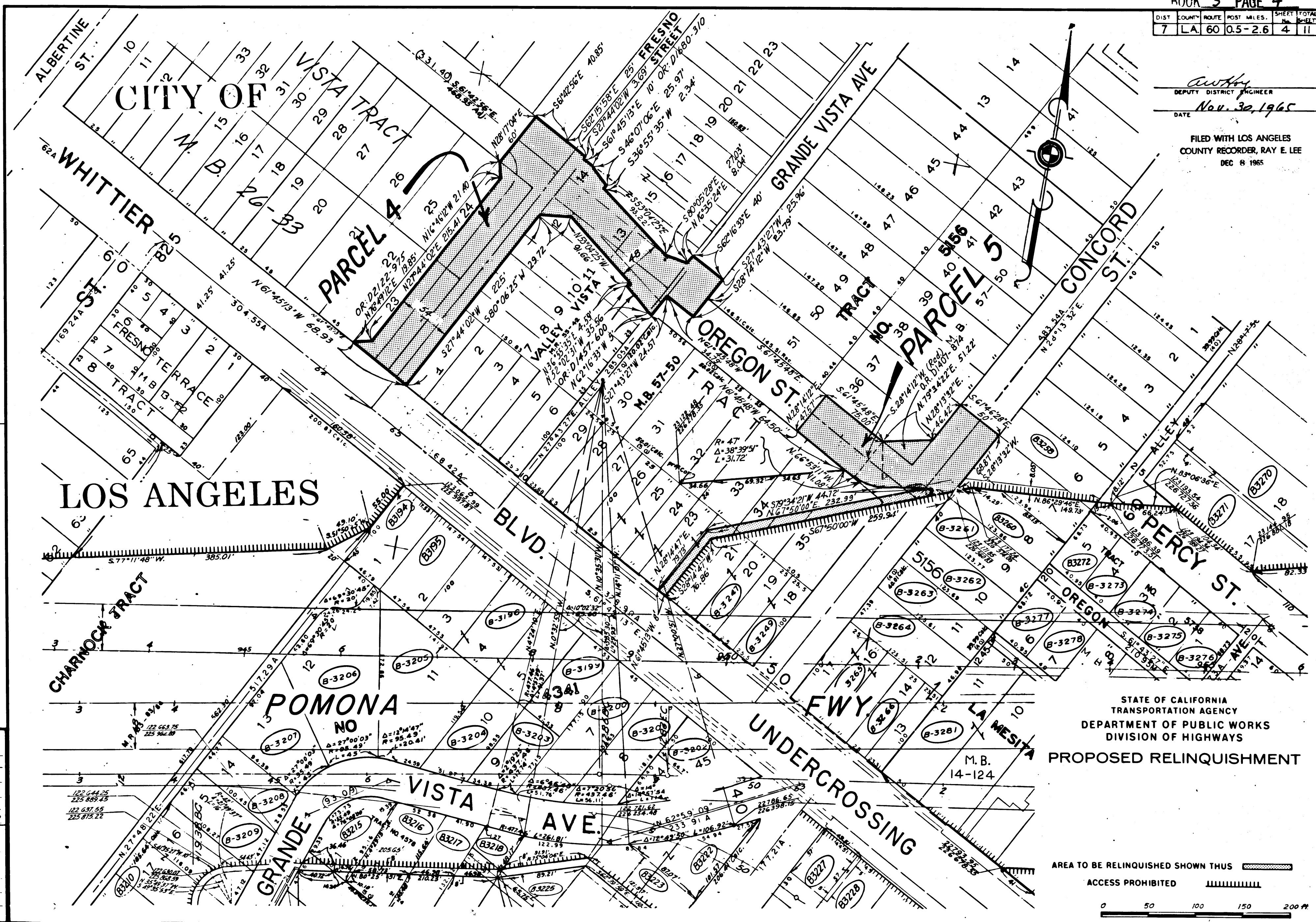




| DIST | COUNTY | ROUTE | POST MILES | SHEET TOTAL |
|------|--------|-------|------------|-------------|
| 7    | LA     | 60    | 0.5-2.6    | 4 11        |



*Awtry*  
 DEPUTY DISTRICT ENGINEER  
 DATE Nov. 30, 1965

FILED WITH LOS ANGELES  
 COUNTY RECORDER, RAY E. LEE  
 DEC 8 1965



**363**  
**REL-445**  
 DRN BY *J.F.F.*  
 C.L.C. BY J.F.F.  
 CKD BY M.M.  
 BASE MAP NOS  
 F-177-F178  
 F-177 & F-178  
 REF. MAP NOS  
 CCM 214.1, 215.7  
 \$220.0  
 AS BUILT NOS  
 155-14

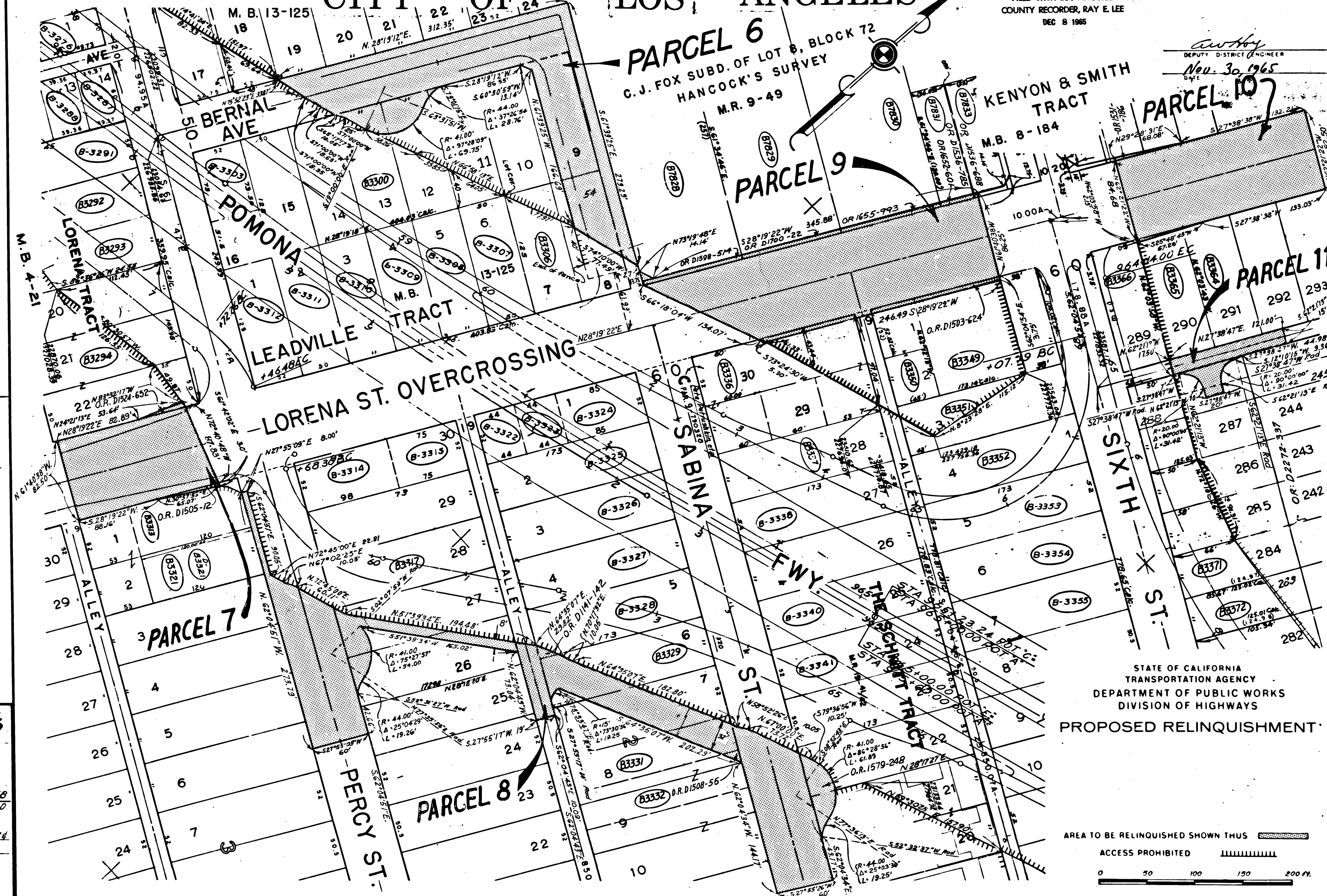
STATE OF CALIFORNIA  
 TRANSPORTATION AGENCY  
 DEPARTMENT OF PUBLIC WORKS  
 DIVISION OF HIGHWAYS  
**PROPOSED RELINQUISHMENT**

AREA TO BE RELINQUISHED SHOWN THUS   
 ACCESS PROHIBITED   
 0 50 100 150 200 FT

# CITY OF LOS ANGELES

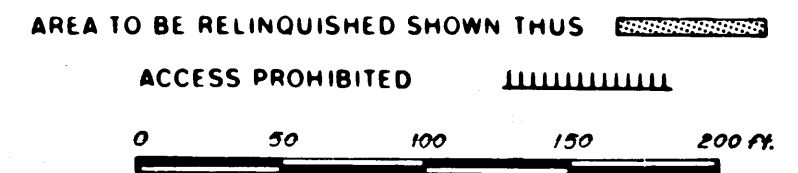
FILED WITH LOS ANGELES  
 COUNTY RECORDER, RAY E. LEE  
 DEC 8 1965

*Anthony*  
 DEPUTY DISTRICT ENGINEER  
 Nov. 30 1965  
 DATE



363  
**REL-445**  
 DRN BY J.F.F.  
 C.L.C. BY J.F.F.  
 CK'D BY M.M.  
 BASE MAP NO'S  
 F-1777-FI, 18  
 F-1779 & F-1780  
 REF MAP NO'S  
 CCM 214.1, 215.7 &  
 220.8  
 AS BUILT NO'S  
 155-14.

STATE OF CALIFORNIA  
 TRANSPORTATION AGENCY  
 DEPARTMENT OF PUBLIC WORKS  
 DIVISION OF HIGHWAYS  
**PROPOSED RELINQUISHMENT**



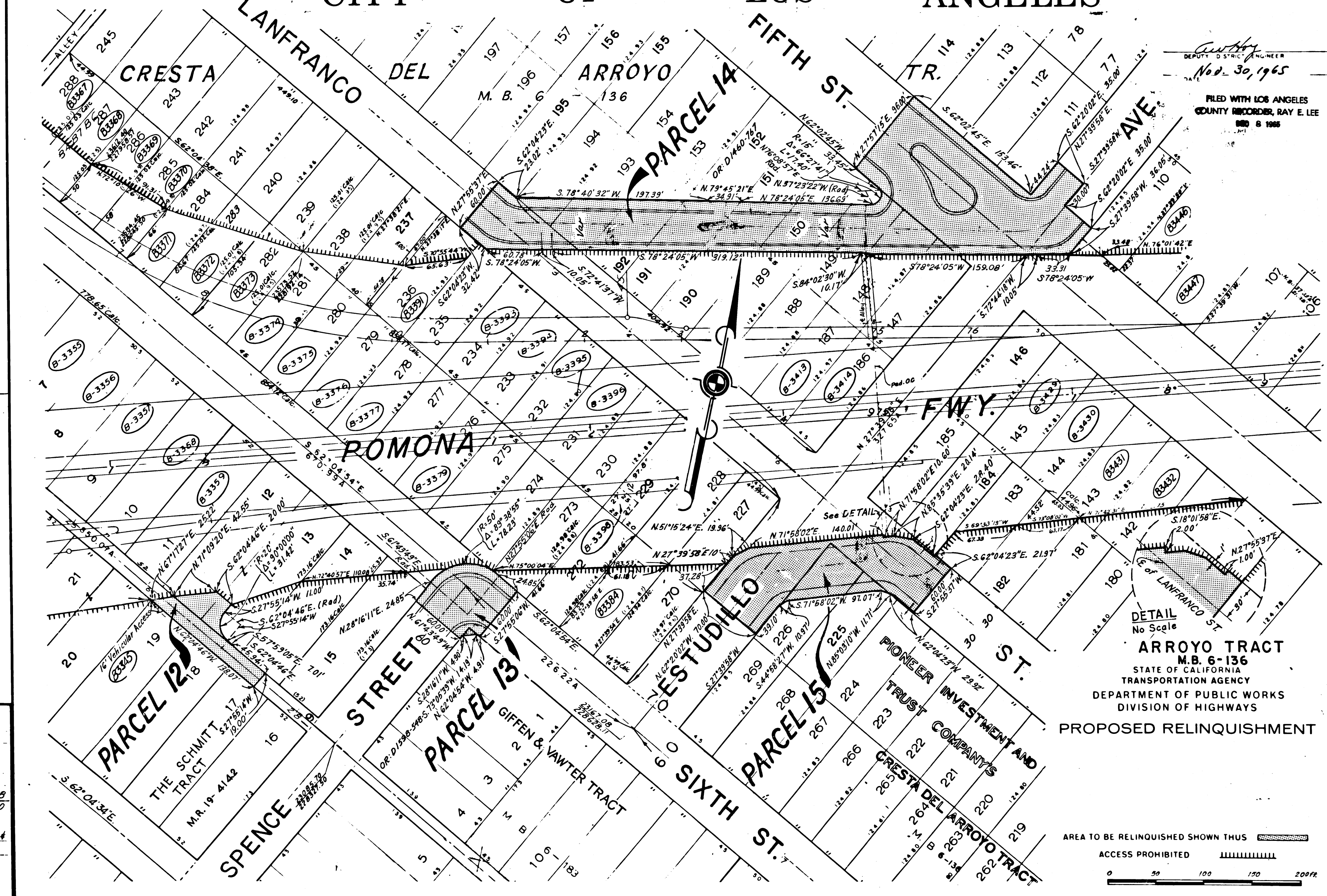


| DIST | COUNTY | ROUTE | POST MILES | SHEET | TOTAL SHEETS |
|------|--------|-------|------------|-------|--------------|
| 7    | LA     | 60    | 0.5-2.6    | 6     | 11           |

# CITY OF LOS ANGELES

*Anthony*  
DEPUTY DISTRICT ENGINEER  
No. 30, 1965

FILED WITH LOS ANGELES  
COUNTY RECORDER, RAY E. LEE  
MAY 8 1965



**DETAIL**  
No Scale

**ARROYO TRACT**  
M.B. 6-136  
STATE OF CALIFORNIA  
TRANSPORTATION AGENCY  
DEPARTMENT OF PUBLIC WORKS  
DIVISION OF HIGHWAYS

**PROPOSED RELINQUISHMENT**

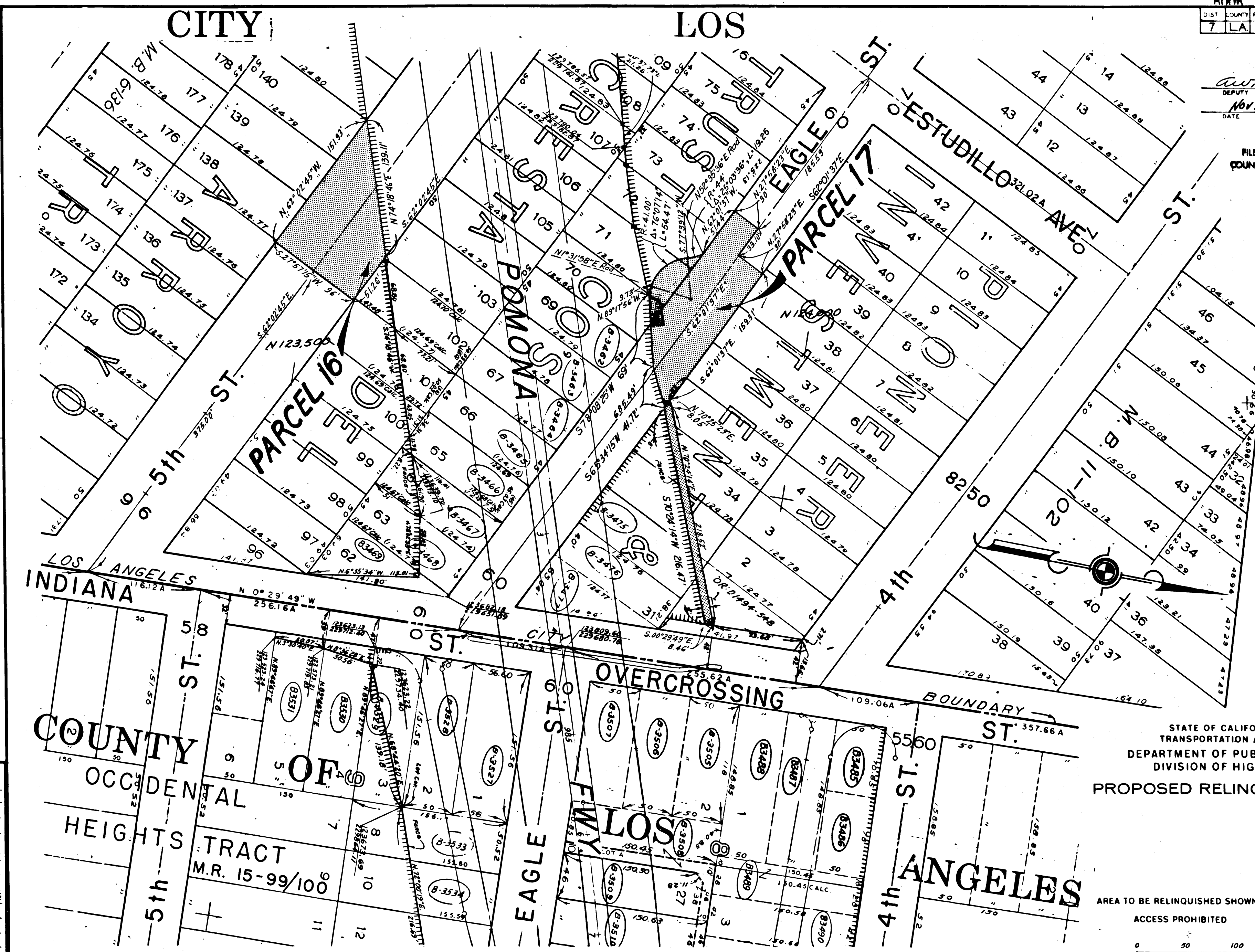
363  
REL-445  
DWN BY J.F.F.  
C.L.C. BY J.F.F.  
CK'D BY M.M.  
BASE MAP NO'S  
F-1777-F-1778  
F-1779 & F-1780

REF MAP NO'S  
CCM 24.1, 215.74  
220.8

AS BUILT NO'S  
155-14.

*awh*  
 DEPUTY DISTRICT ENGINEER  
 Nov. 30, 1965  
 DATE

FILED WITH LOS ANGELES  
 COUNTY RECORDER, RAY E. LEE  
 NOV 8 1965



3rd 8 PL.

STATE OF CALIFORNIA  
 TRANSPORTATION AGENCY  
 DEPARTMENT OF PUBLIC WORKS  
 DIVISION OF HIGHWAYS  
 PROPOSED RELINQUISHMENT

AREA TO BE RELINQUISHED SHOWN THUS   
 ACCESS PROHIBITED   
 0 50 100 150 200 FT.

363  
 REL-445  
 DRN BY *J.F.*  
 C.L.C. BY J.F.F.  
 CKD BY M.M.  
 BASE MAP NOS  
 F-1777-F1778  
 F-1779 & F-1780  
 REF. MAP NOS  
 CCM 214.1, 215.7 &  
 220.8  
 AS BUILT NOS  
 155-14.



# COUNTY OF LOS ANGELES

| DIST. | COUNTY | ROUTE | POST MILES | SHEET | TOTAL SHEETS |
|-------|--------|-------|------------|-------|--------------|
| 7     | LA     | 60    | 0.5-2.6    | 8     | 11           |

E. S. FIELDS'S

TRACT

NO. 2353

|    |    |        |   |    |    |    |    |
|----|----|--------|---|----|----|----|----|
| 6  | 7  | 8      | 9 | 10 | 26 | 25 | 24 |
| M. | B. | 22-128 |   |    | M. | B. |    |

DEPUTY DISTRICT ENGINEER  
 DATE Nov. 29, 1965

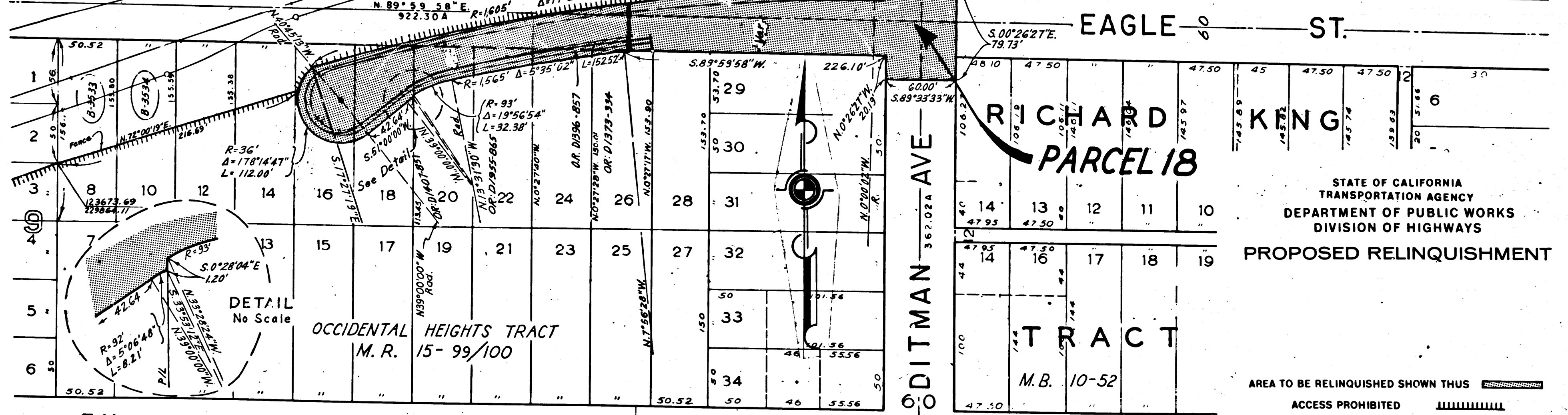
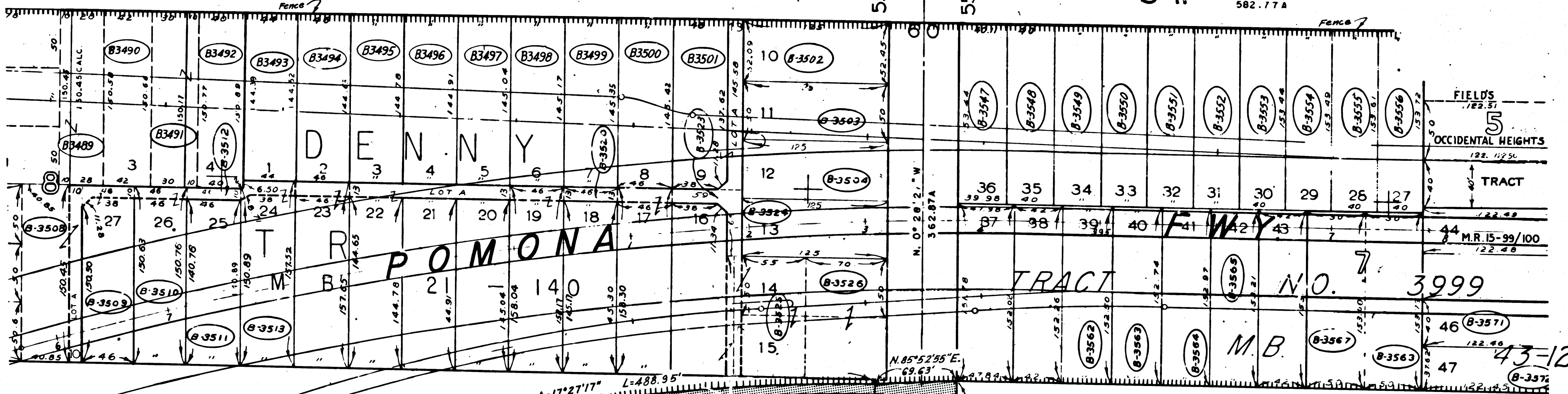
FILED WITH LOS ANGELES COUNTY RECORDER, RAY E. LEE  
 DEC 8 1965

4th

N. 89° 40' 39" E.  
 922.62 A

ST.

N. 89° 40' 39" E.  
 582.77 A

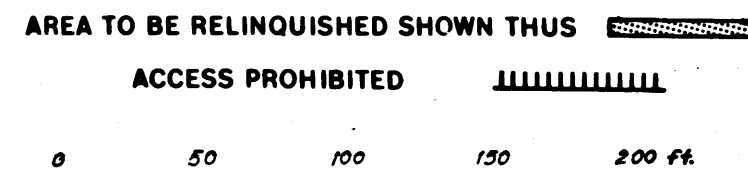


363  
 REL-445  
 DWN BY J.F.F.  
 CLC BY J.F.F.  
 CRD BY M.M.  
 BASE MAP NOS. E-1772-F-1780  
 REF. MAP NOS. CCM 214-L-215-74  
 220.8  
 AS BUILT NOS. 155-14

5th

ST.

STATE OF CALIFORNIA  
 TRANSPORTATION AGENCY  
 DEPARTMENT OF PUBLIC WORKS  
 DIVISION OF HIGHWAYS  
 PROPOSED RELINQUISHMENT

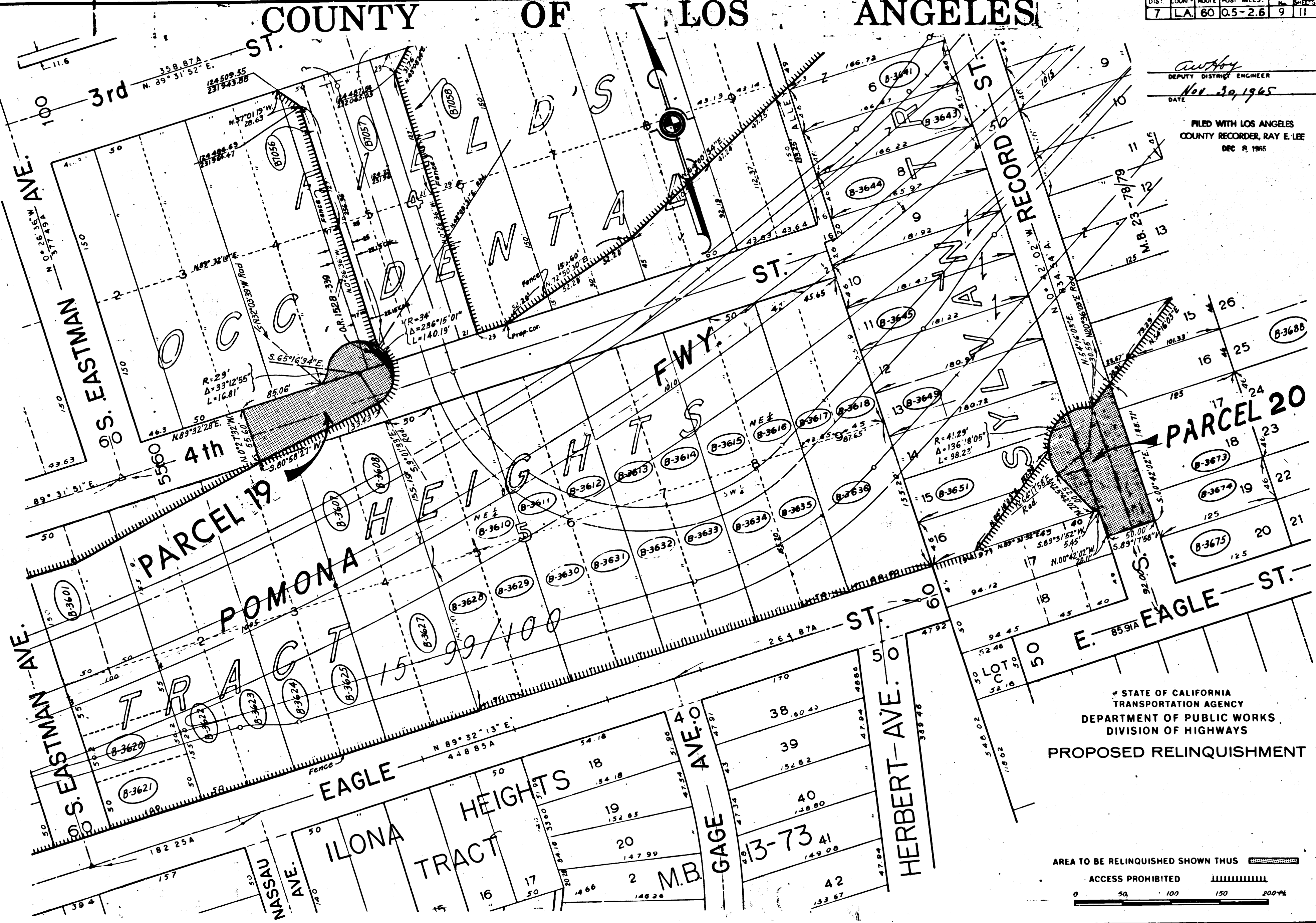




# COUNTY OF LOS ANGELES

BOOK 3 PAGE 9  
 DIST. COUNTY ROUTE POST MILES. SHEET TOTAL  
 7 LA 60 0.5-2.6 9 11

*awhoy*  
 DEPUTY DISTRICT ENGINEER  
 DATE Nov. 30, 1965  
 FILED WITH LOS ANGELES  
 COUNTY RECORDER, RAY E. LEE  
 DEC. 8, 1965



REL-363  
 REL-445  
 DRN BY: [Signature]  
 CLC BY: J.F.F.  
 CKD BY: M.M.  
 BASE MAP NOS.  
 F-1171-F-1176  
 F-1779 & F-1780  
 REF. MAP NOS.  
 CCM 214.1, 215.7 &  
 220.8  
 AS BUILT NOS.  
 155-14.

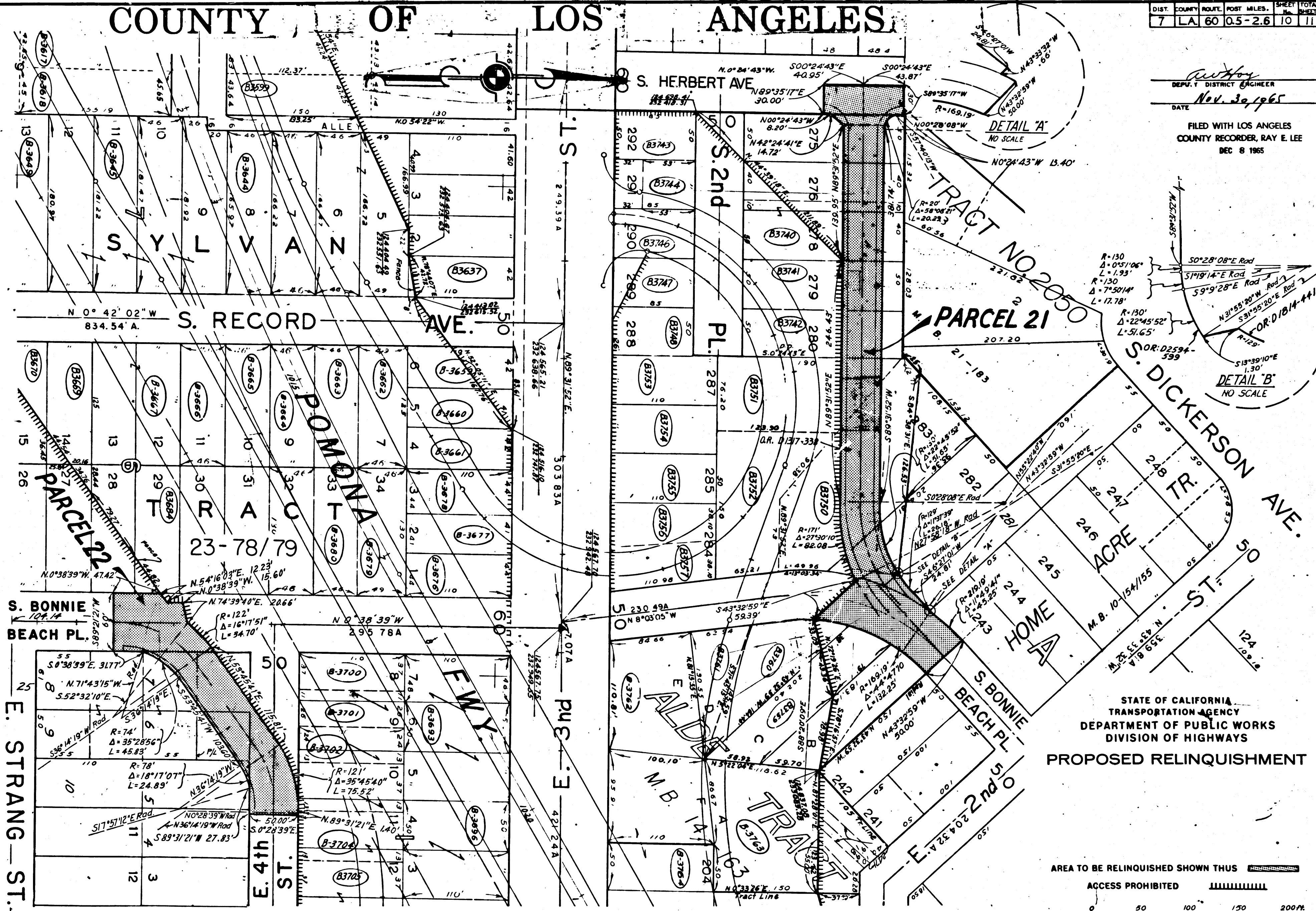
STATE OF CALIFORNIA  
 TRANSPORTATION AGENCY  
 DEPARTMENT OF PUBLIC WORKS  
 DIVISION OF HIGHWAYS  
**PROPOSED RELINQUISHMENT**

AREA TO BE RELINQUISHED SHOWN THUS [Hatched Pattern]  
 ACCESS PROHIBITED [Dashed Line Pattern]  
 0 50 100 150 200 FT.

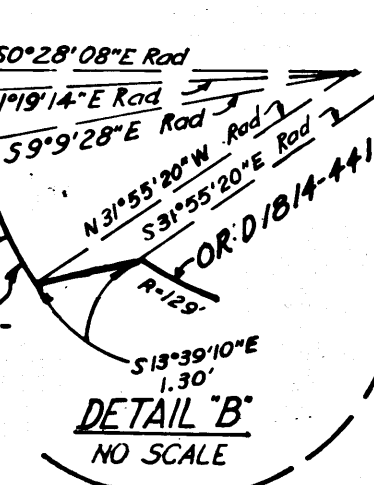
# COUNTY OF LOS ANGELES

| DIST. | COUNTY | ROUTE | POST MILES. | SHEET NO. | TOTAL SHEETS |
|-------|--------|-------|-------------|-----------|--------------|
| 7     | LA     | 60    | 0.5-2.6     | 10        | 11           |

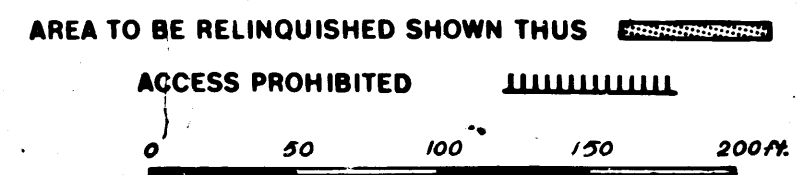
*Author*  
 DEPT. DISTRICT ENGINEER  
 DATE Nov. 30, 1965  
 FILED WITH LOS ANGELES COUNTY RECORDER, RAY E. LEE  
 DEC 8 1965



TRACT NO. 2050  
 PARCEL 21



STATE OF CALIFORNIA  
 TRANSPORTATION AGENCY  
 DEPARTMENT OF PUBLIC WORKS  
 DIVISION OF HIGHWAYS  
**PROPOSED RELINQUISHMENT**



**363**  
**REL-445**  
 DRN BY *J.F.F.*  
 CLC BY *J.F.F.*  
 CKD BY *M.M.*  
 BASE MAP NOS...  
*F-111-F-112*  
*F-1779 & 1780*  
 REF. MAP NOS...  
*CCM 214.1, 215.7 & 220.8*  
 AS BUILT NOS...  
*155-14*



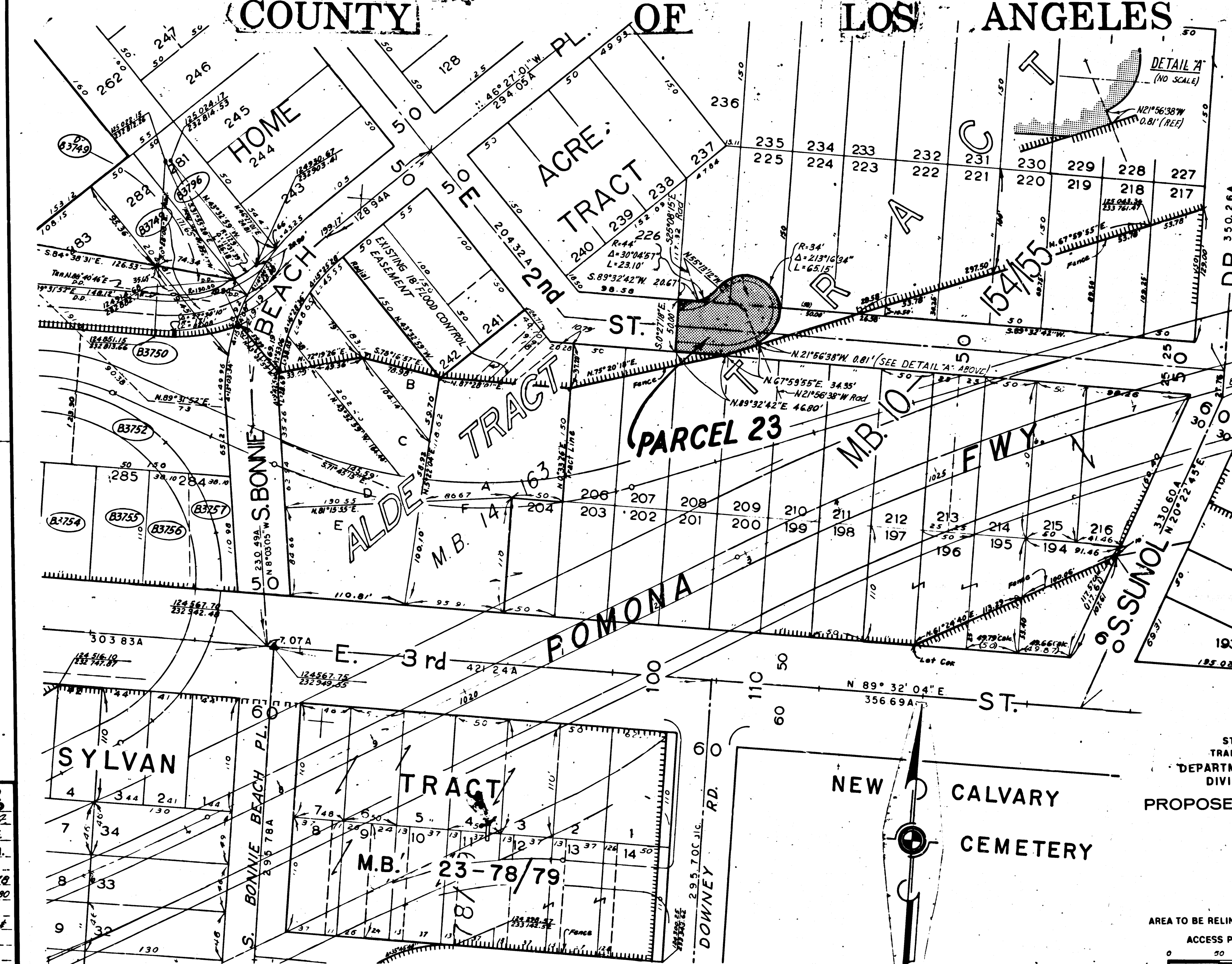
# COUNTY OF LOS ANGELES

BOOK 3 PAGE 71

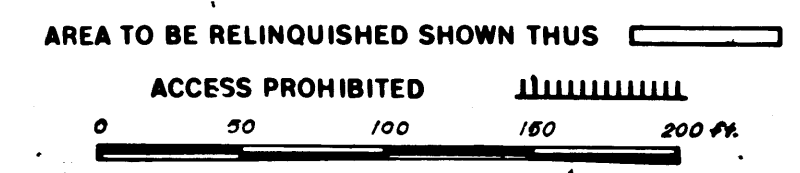
| DIST. | COUNTY | ROUTE | POST MILES. | SHEET NO. | TOTAL SHEETS |
|-------|--------|-------|-------------|-----------|--------------|
| 7     | LA     | 60    | 0.5-2.6     | 11        | 11           |

*Anthony*  
 DEPUTY DISTRICT ENGINEER  
 Nov. 30, 1965  
 DATE

FILED WITH LOS ANGELES  
 COUNTY RECORDER, RAY E. LEE  
 DEC 8 1965



STATE OF CALIFORNIA  
 TRANSPORTATION AGENCY  
 DEPARTMENT OF PUBLIC WORKS  
 DIVISION OF HIGHWAYS  
**PROPOSED RELINQUISHMENT**



**363**  
**REL-445**  
 DRN BY *J.F.F.*  
 C.L.C. BY *J.F.F.*  
 CKD BY *M.M.*  
 BASE MAP NOS...  
*F-1779 & F-1780*  
 REF. MAP NOS...  
*CCM 214, 215, 7, 220, 8*  
 AS BUILT NOS...  
*155-14*