

DIST	COUNTY	ROUTE	POST MILES	SHEET NO.	TOTAL SHEETS
7	L.A.	10	4.5/6.9	1	11

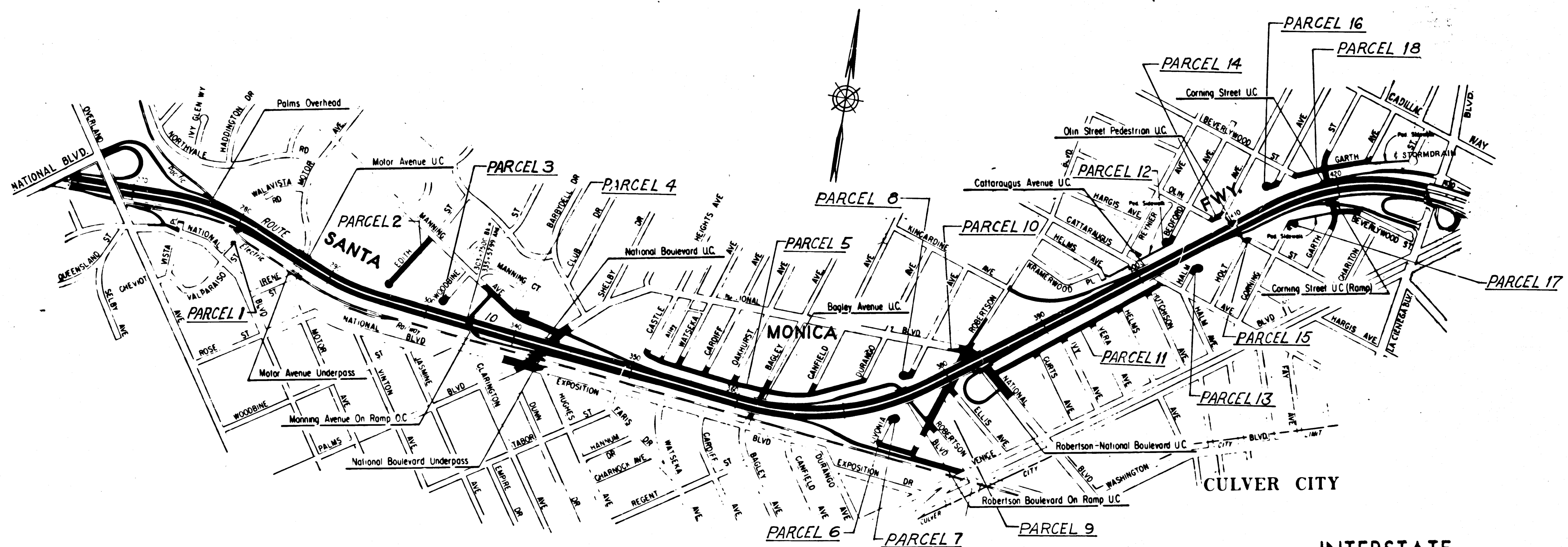
STATE OF CALIFORNIA
 TRANSPORTATION AGENCY
 DEPARTMENT OF PUBLIC WORKS
 DIVISION OF HIGHWAYS

awhoy
 DEPUTY DISTRICT ENGINEER
 DATE Dec. 3, 1965

RIGHT OF WAY MAPS OF
STATE HIGHWAY

In Los Angeles County in Los Angeles
 between Overland Avenue and La Cienega Boulevard

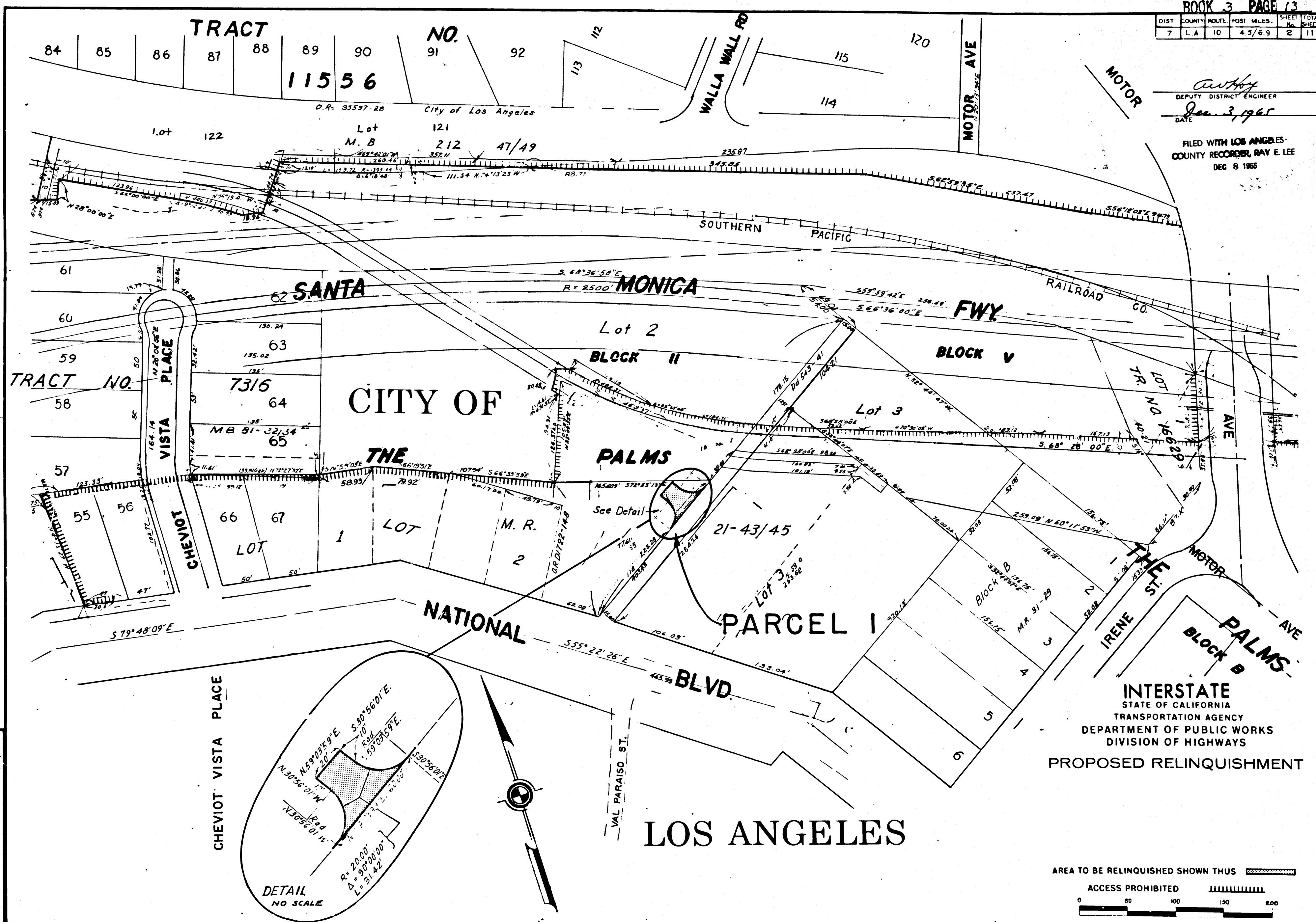
2617
 RECORDED
 AT REQUEST OF
 DEPT. OF PUBLIC WORKS
 DEC. 8, 1965
 1 MIN.
 9 A.M.
 3
 12
 OF PUBLIC HIGHWAY MAPS
 LOS ANGELES COUNTY, CALIF.
 RAY E. LEE
 COUNTY RECORDER
 BY *awhoy* FREE
 Deputy



INTERSTATE
 PROPOSED RELINQUISHMENT

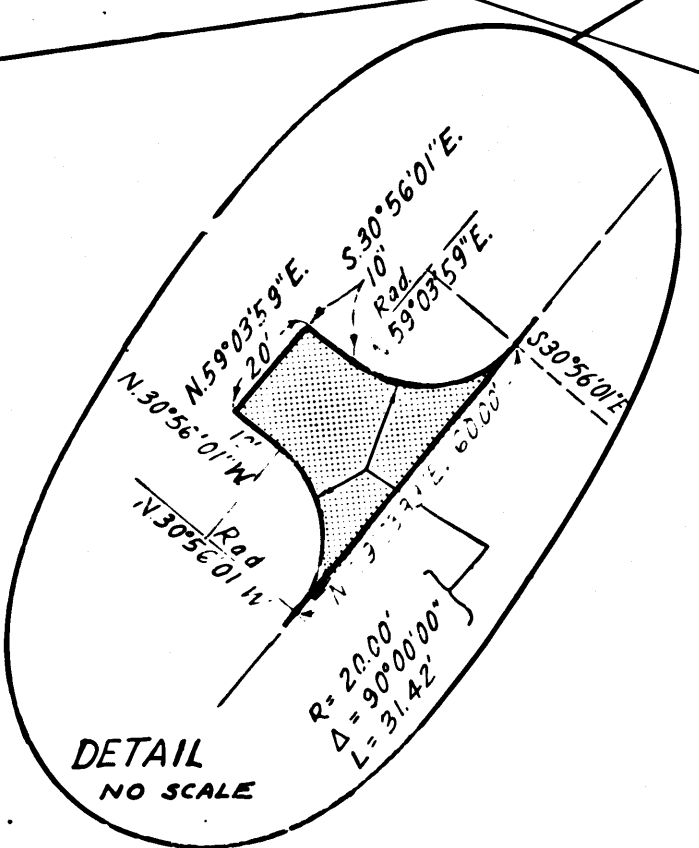
REL- 365
 DRN BY V. BRUNSON
 C'LC BY H. LEE
 CK'D BY J.F.F.
 BASE MAP NOS
 F-2069, F-2070
 F-2071, F-2072
 REF. MAP NOS
 C.C.M. 220.08,
 220.08A, 220.09
 AS BUILT NOS
 152-2

DIST.	COUNTY	ROUTE	POST MILES	SHEET No.	TOTAL SHEETS
7	L.A.	10	4.5/6.9	2	11

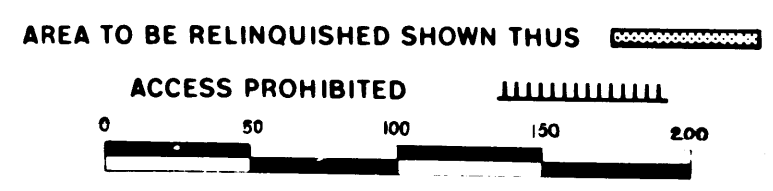


Anthony
 DEPUTY DISTRICT ENGINEER
 DATE Jan 3, 1965
 FILED WITH LOS ANGELES COUNTY RECORDER, RAY E. LEE
 DEC 8 1965

REL-365
 DRN BY B.K.V.B.
 C.L.C. BY M. LEE
 CK'D BY J.F.E.
 BASE MAP NOS.
 F-2069, F-2070
 F-2071, F-2072
 REF. MAP NOS.
 C.C.M. 220.09,
 220.08A, 220.09
 AS BUILT NOS.
 152-2



INTERSTATE
 STATE OF CALIFORNIA
 TRANSPORTATION AGENCY
 DEPARTMENT OF PUBLIC WORKS
 DIVISION OF HIGHWAYS
 PROPOSED RELINQUISHMENT



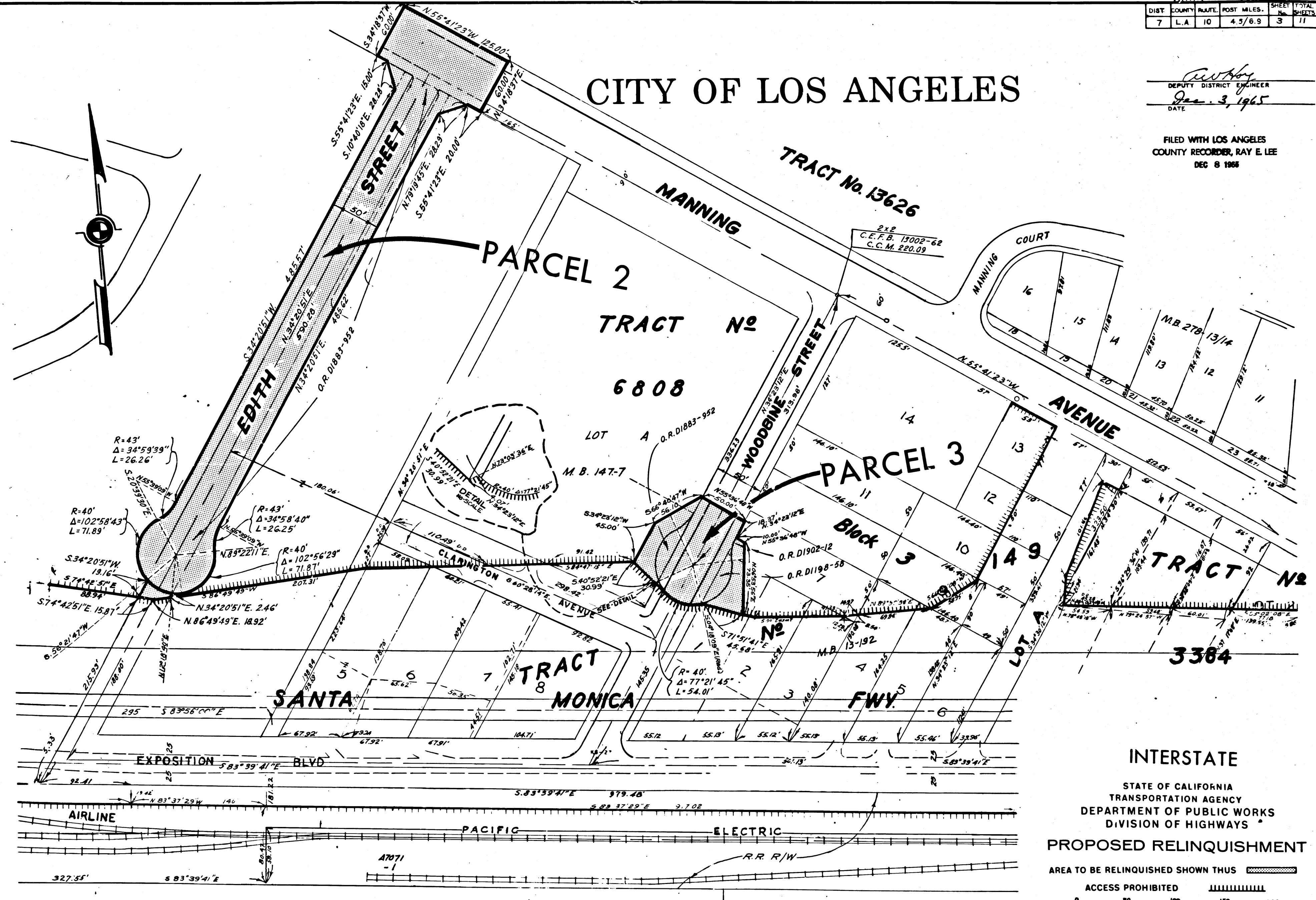
LOS ANGELES

DIST.	COUNTY	ROUTE	POST MILES.	SHEET No.	TOTAL SHEETS
7	L.A.	10	4.5/6.9	3	11




CITY OF LOS ANGELES

Ray E. Lee
 DEPUTY DISTRICT ENGINEER
 Jan. 3, 1965
 DATE

FILED WITH LOS ANGELES
 COUNTY RECORDER, RAY E. LEE
 DEC 8 1965

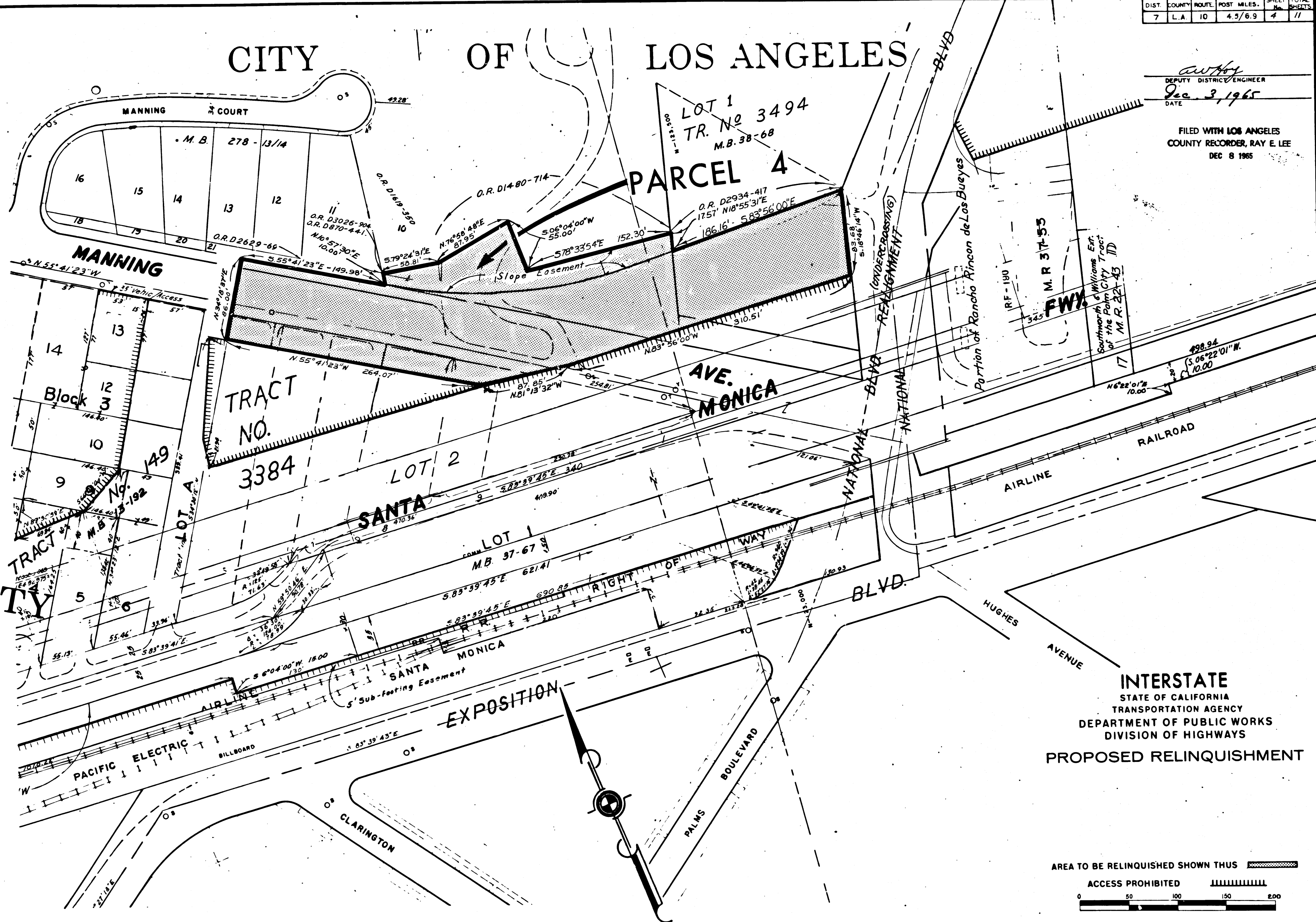


REL-365
 DRN BY B.K.V.G.
 C.L.C. BY H.L.
 CK'D BY J.F.F.
 BASE MAP NO'S...
 F-2069, F-2070
 F-2071, F-2072
 REF. MAP NO'S
 C.C.M. 220.08,
 220.08A, 220.09
 AS BUILT NO'S
 152-2

INTERSTATE
 STATE OF CALIFORNIA
 TRANSPORTATION AGENCY
 DEPARTMENT OF PUBLIC WORKS
 DIVISION OF HIGHWAYS
PROPOSED RELINQUISHMENT
 AREA TO BE RELINQUISHED SHOWN THUS 
 ACCESS PROHIBITED 


CITY OF LOS ANGELES

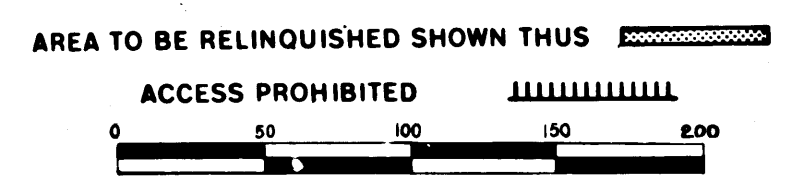
W. H. H.
 DEPUTY DISTRICT ENGINEER
 DATE Dec 3, 1965
 FILED WITH LOS ANGELES COUNTY RECORDER, RAY E. LEE
 DEC 8 1965

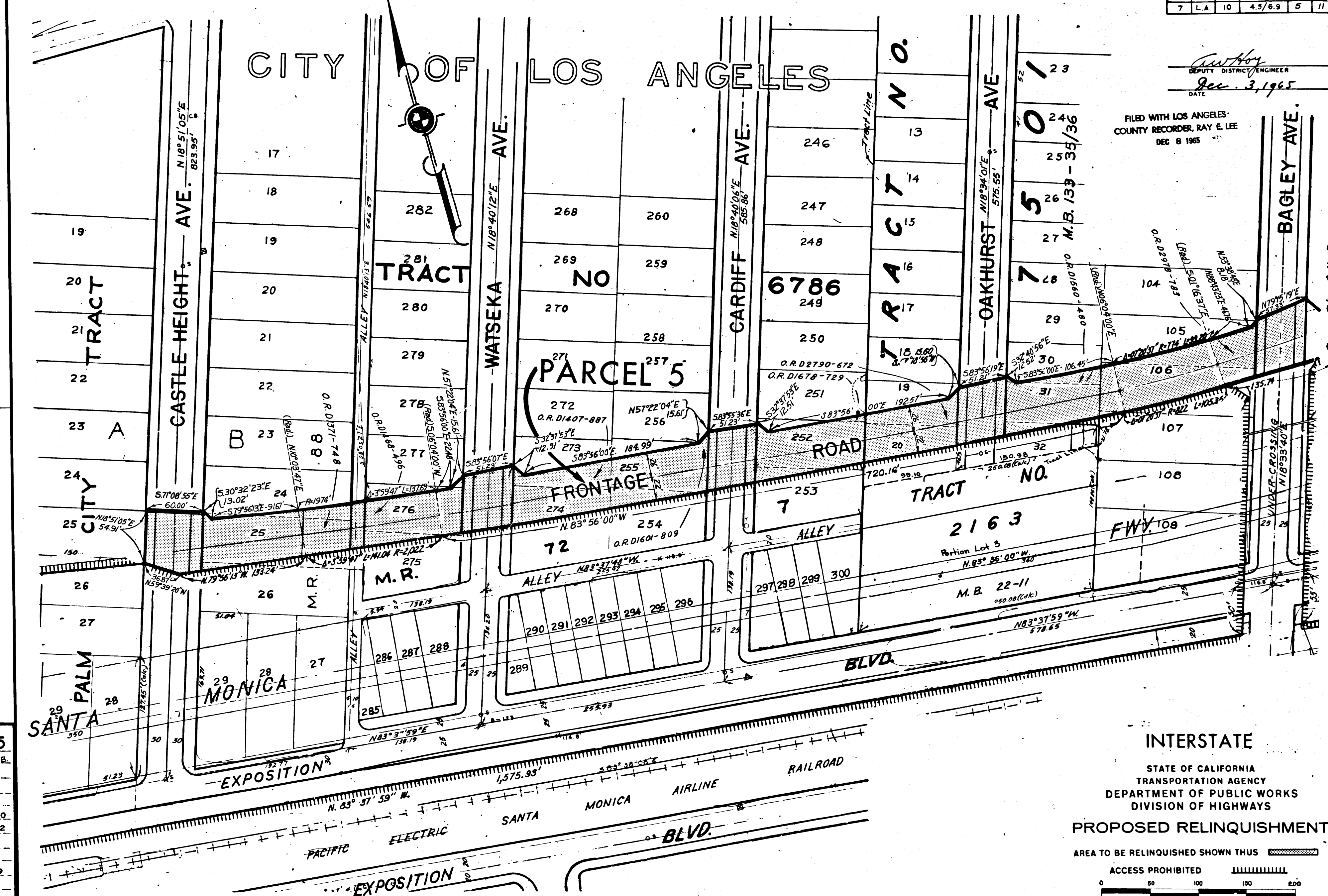


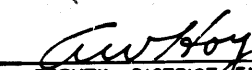
COUNTY

REL-365
 DWN BY B.K.V.B.
 C'LC BY H.L.
 CKD BY J.F.F.
 BASE MAP NO'S
 F-2069, F-2070
 F-2071, F-2072
 REF. MAP NO'S
 C.C.M. 220.08,
 220.08A, 220.09
 AS BUILT NO'S
 152-2

INTERSTATE
 STATE OF CALIFORNIA
 TRANSPORTATION AGENCY
 DEPARTMENT OF PUBLIC WORKS
 DIVISION OF HIGHWAYS
PROPOSED RELINQUISHMENT








 DEPUTY DISTRICT ENGINEER
 DATE Dec. 3, 1965

FILED WITH LOS ANGELES
 COUNTY RECORDER, RAY E. LEE
 DEC 8 1965

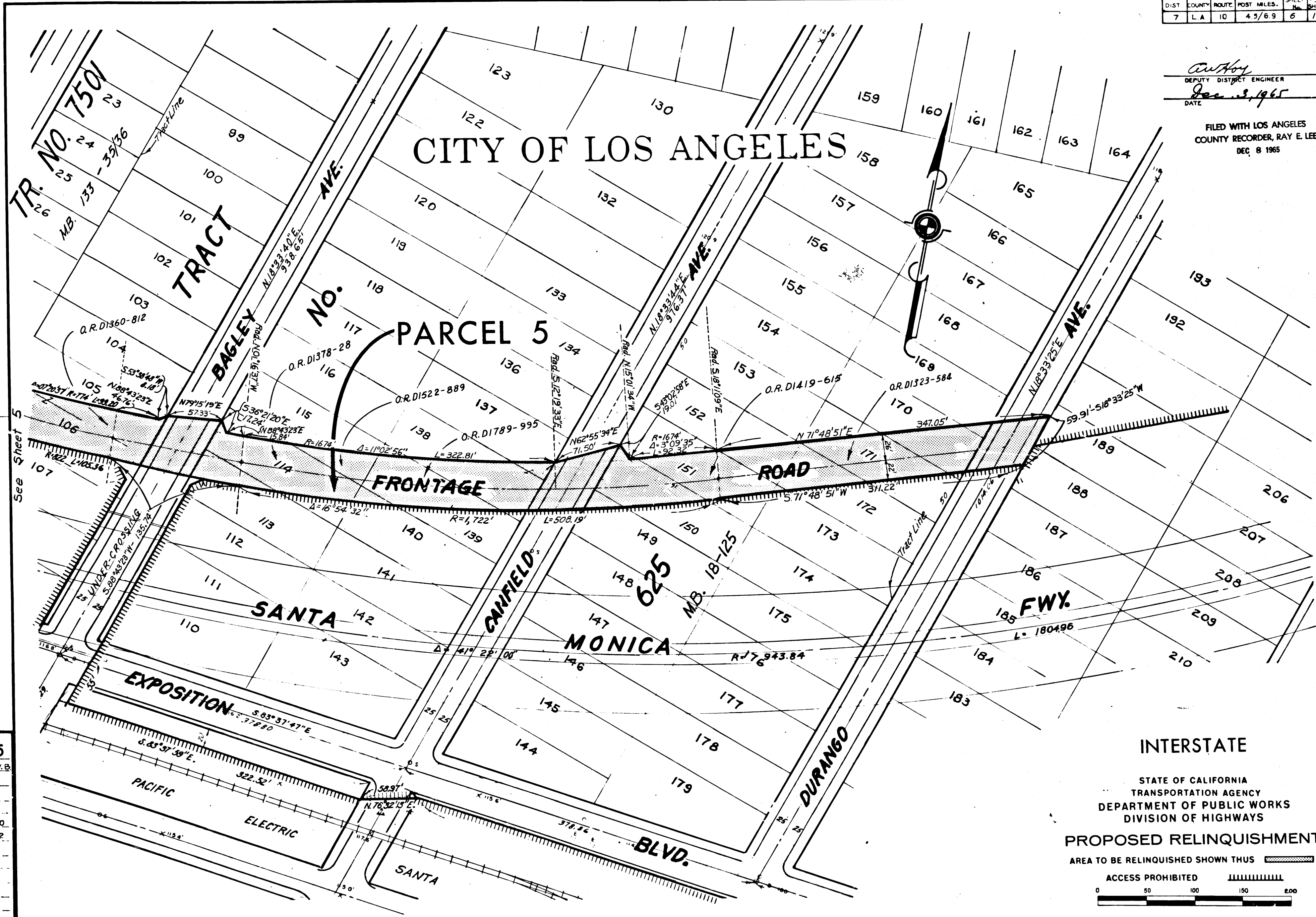
See Sheet No. 6

REL-365
 DRN BY V.B.
 C.L.C. BY H.L.
 CKD BY J.F.F.
 BASE MAP NO'S
 F-2069, F-2070
 F-2071, F-2072
 REF. MAP NO'S
 C.C.M. 220.08,
 220.08A, 220.09
 AS BUILT NO'S
 152-2

INTERSTATE
 STATE OF CALIFORNIA
 TRANSPORTATION AGENCY
 DEPARTMENT OF PUBLIC WORKS
 DIVISION OF HIGHWAYS
PROPOSED RELINQUISHMENT
 AREA TO BE RELINQUISHED SHOWN THUS 
 ACCESS PROHIBITED 
 0 50 100 150 200

Anthony
 DEPUTY DISTRICT ENGINEER
 DATE Dec 3, 1965

FILED WITH LOS ANGELES
 COUNTY RECORDER, RAY E. LEE
 DEC 8 1965



CITY OF LOS ANGELES

PARCEL 5

REL-365
 DRN BY FB.K.V.B.
 C.L.C. BY H.L.
 CK'D BY J.F.F.
 BASE MAP NO'S
 F-2069, F-2070
 F-2071, F-2072
 REF. MAP NO'S
 CCM220, O9
 220.08A, 220.08
 AS BUILT NO'S
 152-2

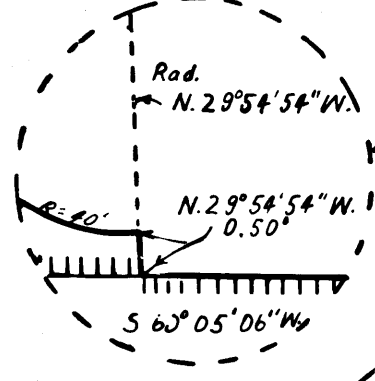
INTERSTATE
 STATE OF CALIFORNIA
 TRANSPORTATION AGENCY
 DEPARTMENT OF PUBLIC WORKS
 DIVISION OF HIGHWAYS
 PROPOSED RELINQUISHMENT
 AREA TO BE RELINQUISHED SHOWN THUS
 ACCESS PROHIBITED
 0 50 100 150 200

BOOK 3 PAGE 18

DIST	COUNTY	ROUTE	POST MILES.	SHEET No.	TOTAL SHEETS
7	L.A.	10	4.5/6.9	7	11

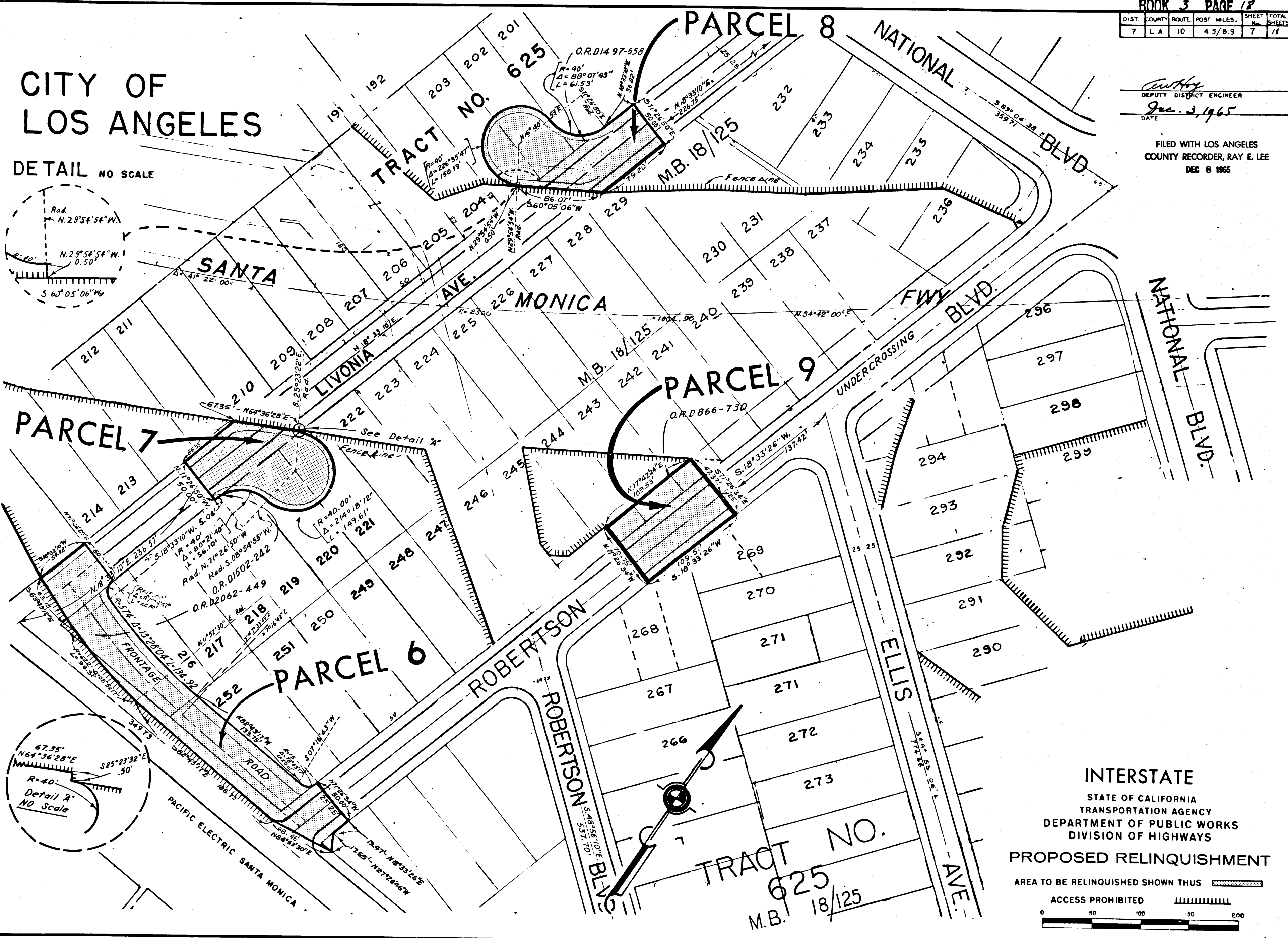
CITY OF
LOS ANGELES

DETAIL NO SCALE



Anthony
DEPUTY DISTRICT ENGINEER
DATE Dec. 3, 1965

FILED WITH LOS ANGELES
COUNTY RECORDER, RAY E. LEE
DEC 8 1965



REL-365
DWN BY V.E.
CLC BY H.L.
CK'D BY J.F.F.
BASE MAP NOS.
F-2069, F-2070
F-2071, F-2072
REF. MAP NOS.
C.C.M. 220.08,
220.08A, 220.09
AS BUILT NO'S.
152-2

INTERSTATE
STATE OF CALIFORNIA
TRANSPORTATION AGENCY
DEPARTMENT OF PUBLIC WORKS
DIVISION OF HIGHWAYS

PROPOSED RELINQUISHMENT

AREA TO BE RELINQUISHED SHOWN THUS

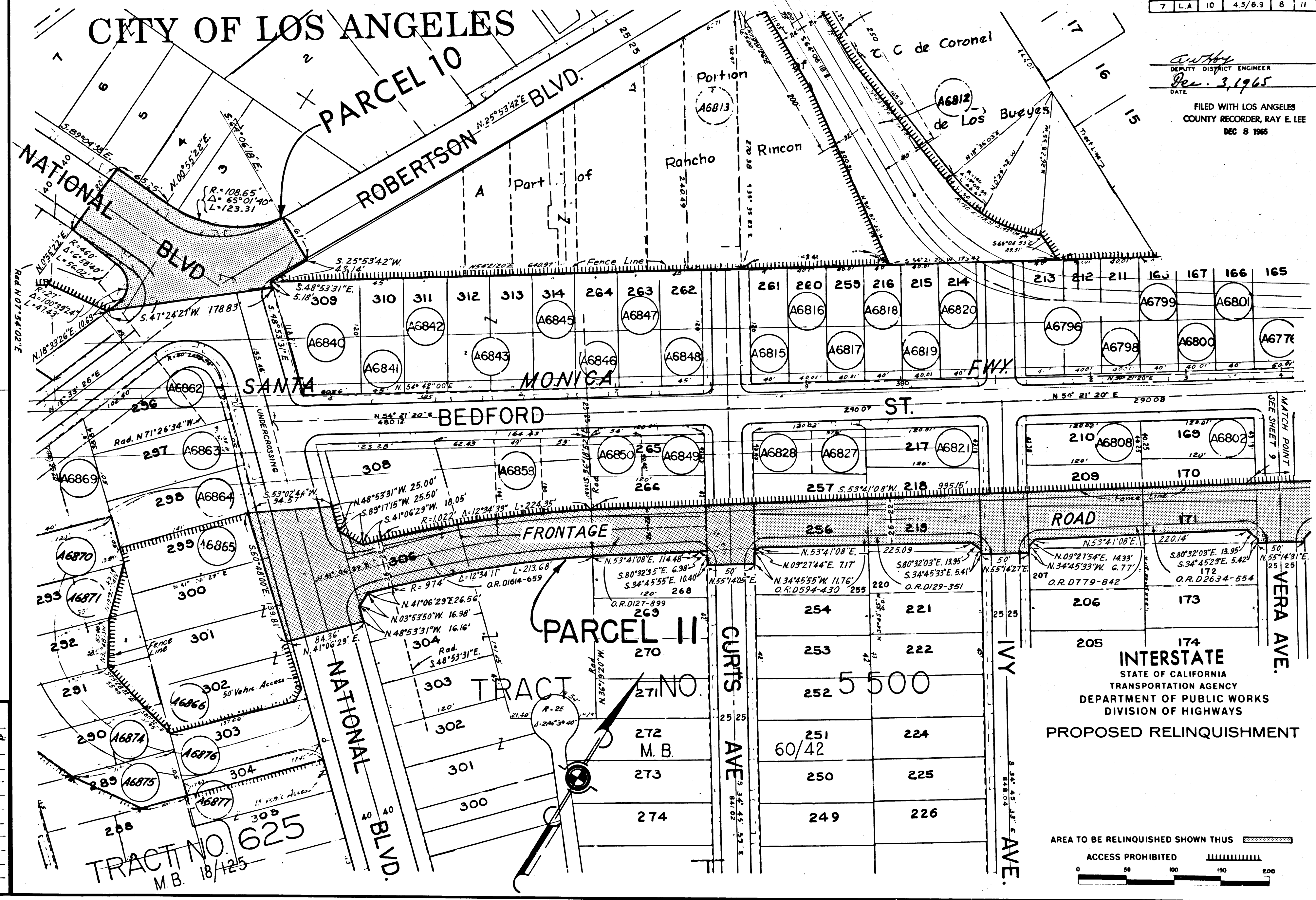
ACCESS PROHIBITED

0 50 100 150 200

CITY OF LOS ANGELES

PARCEL 10

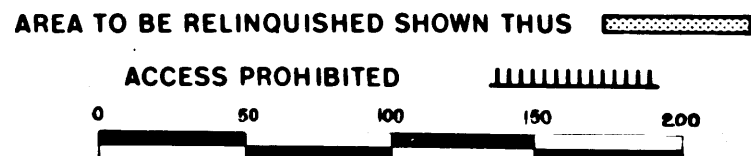
Authy
 DEPUTY DISTRICT ENGINEER
 Dec. 3, 1965
 DATE
 FILED WITH LOS ANGELES
 COUNTY RECORDER, RAY E. LEE
 DEC 8 1965



REL-365
 DRN BY B.K.V.B.
 C/LC BY H.L.
 CKD BY J.F.F.
 BASE MAP NO'S
 F-2069, F-2070
 F-2071, F-2072
 REF. MAP NO'S
 C.C.M. 220.08,
 220.08A, 220.09
 AS BUILT NO'S
 152-2

TRACT NO. 625
 M.B. 18/125

INTERSTATE
 STATE OF CALIFORNIA
 TRANSPORTATION AGENCY
 DEPARTMENT OF PUBLIC WORKS
 DIVISION OF HIGHWAYS
PROPOSED RELINQUISHMENT

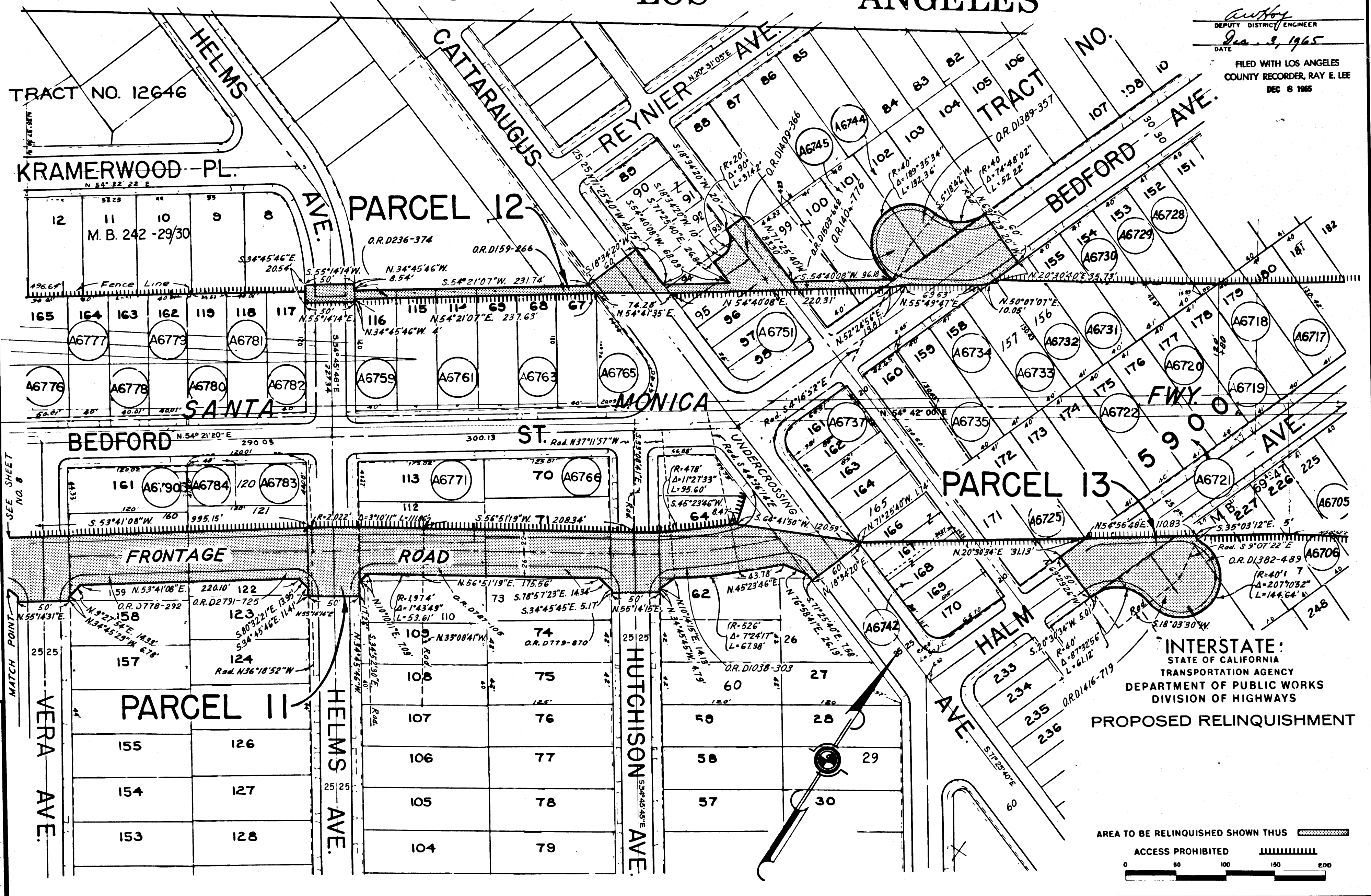


DIST.	COUNTY	ROUTE	POST MILES	SHEET TOTAL	TOTAL SHEETS
7	L.A.	10	4.5/6.9	9	11

CITY OF LOS ANGELES

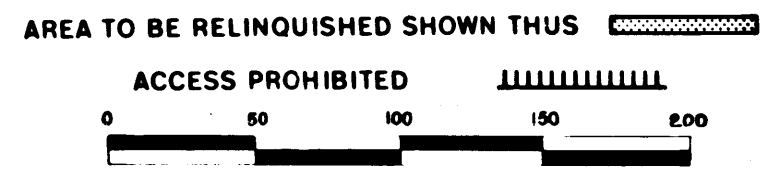
Authy
 DEPUTY DISTRICT ENGINEER
 DATE *Dec. 3, 1965*

FILED WITH LOS ANGELES
 COUNTY RECORDER, RAY E. LEE
 DEC 8 1965



REL-365
 DRN BY B.K.
 C.L.C. BY H.L.
 CKD BY J.F.F.
 BASE MAP NO'S
 F-2069, F-2070
 F-2071, F-2072
 REF MAP NO'S
 C.C.M. 220.08,
 220.08A, 220.09
 AS BUILT NO'S
 152-2

INTERSTATE:
 STATE OF CALIFORNIA
 TRANSPORTATION AGENCY
 DEPARTMENT OF PUBLIC WORKS
 DIVISION OF HIGHWAYS
PROPOSED RELINQUISHMENT



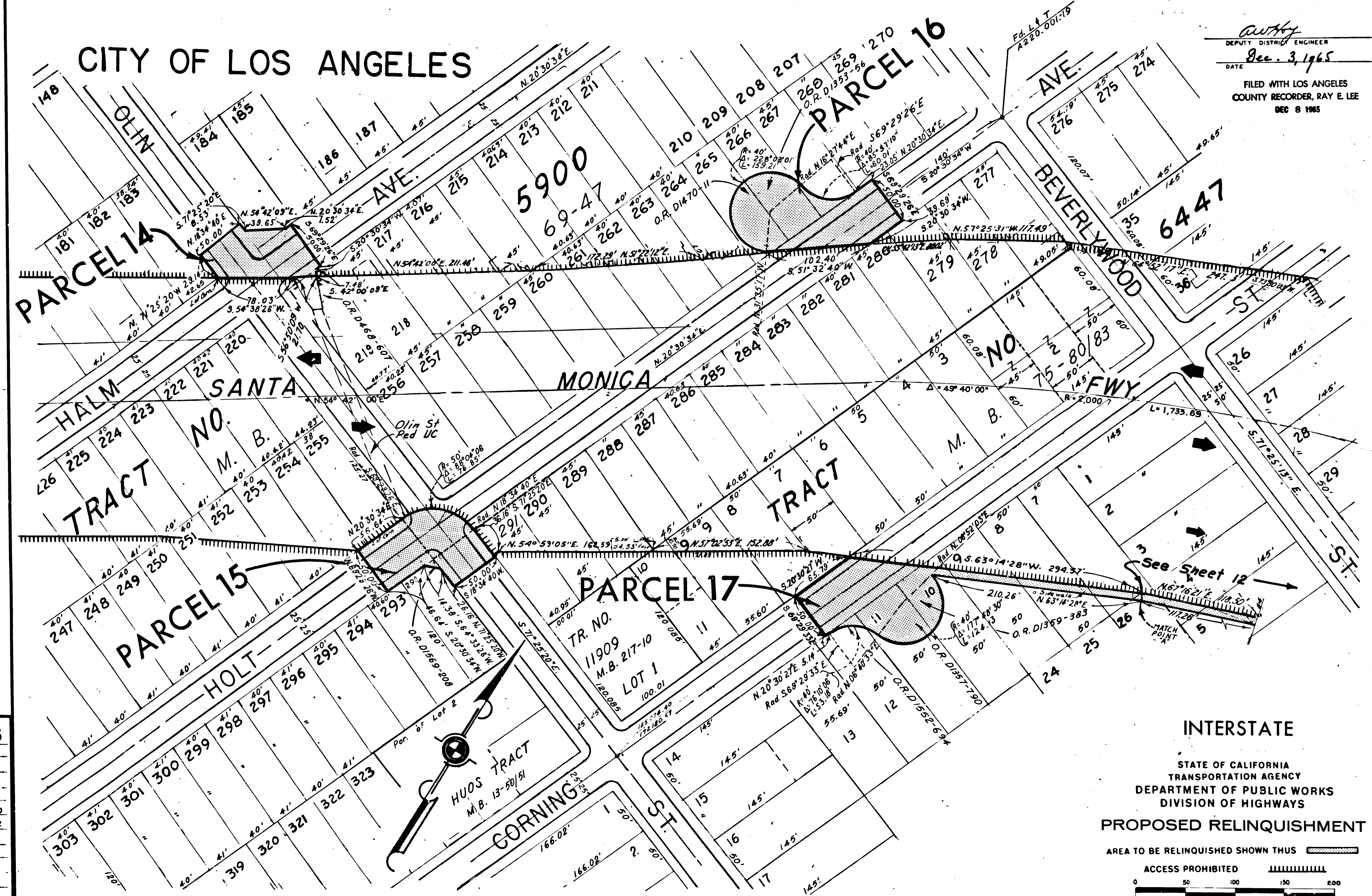
DIST.	COUNTY	ROUTE	POST MILES.	SHEET No.	TOTAL SHEETS
7	L.A.	10	4 3/6.9	10	11

awhy
DEPUTY DISTRICT ENGINEER

Dec. 3, 1965
DATE

FILED WITH LOS ANGELES
COUNTY RECORDER, RAY E. LEE
DEC 8 1965

CITY OF LOS ANGELES



REL-365
 DRN BY E.P.F.
 C.L.C BY H.L.
 CKD BY J.F.F.
 BASE MAP NOS.
 F-2069, F-2070
 F-2071, F-2072
 REF. MAP NOS.
 C.C.M. 220.08,
 220.08A, 220.09
 AS BUILT NO'S
 152-2

INTERSTATE
 STATE OF CALIFORNIA
 TRANSPORTATION AGENCY
 DEPARTMENT OF PUBLIC WORKS
 DIVISION OF HIGHWAYS
PROPOSED RELINQUISHMENT
 AREA TO BE RELINQUISHED SHOWN THIS
 ACCESS PROHIBITED
 0 50 100 150 200

FILED WITH LOS ANGELES
 COUNTY RECORDER, RAY E. LEE
 DEC 8 1965

Curry
 DEPUTY DISTRICT ENGINEER
 Dec. 3, 1965
 DATE

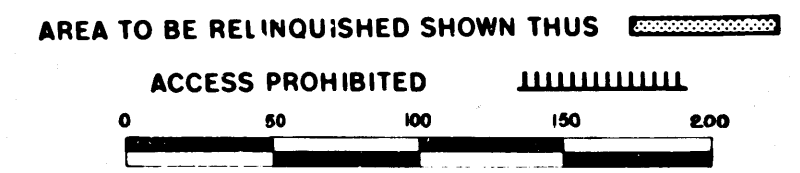
CITY OF

LOS ANGELES



REL-365
 DRN BY E.P.F.
 C.L.C. BY H.L.
 CKD BY J.F.F.
 BASE MAP NOS.
 F-2069, F-2070
 F-2071, F-2072
 REF. MAP NOS.
 C.C.M. 220.08,
 220.08A, 220.09
 AS BUILT NOS.
 152-2

INTERSTATE
 STATE OF CALIFORNIA
 TRANSPORTATION AGENCY
 DEPARTMENT OF PUBLIC WORKS
 DIVISION OF HIGHWAYS
 PROPOSED RELINQUISHMENT



DETAIL
 NO SCALE